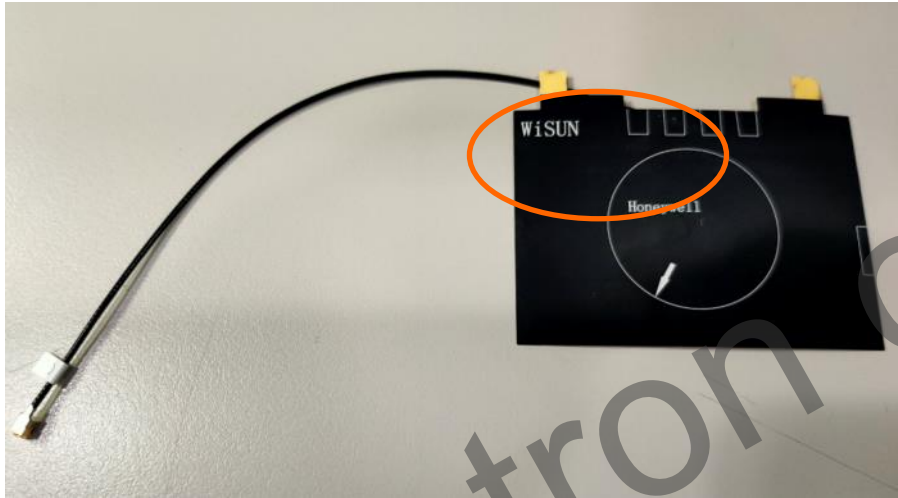


# **Aetheros\_Honeywell ASSEMBLY SOP**

2020.06.02 Jerry Lee

Antenna cable



Antenna WiSUN \_ No.1



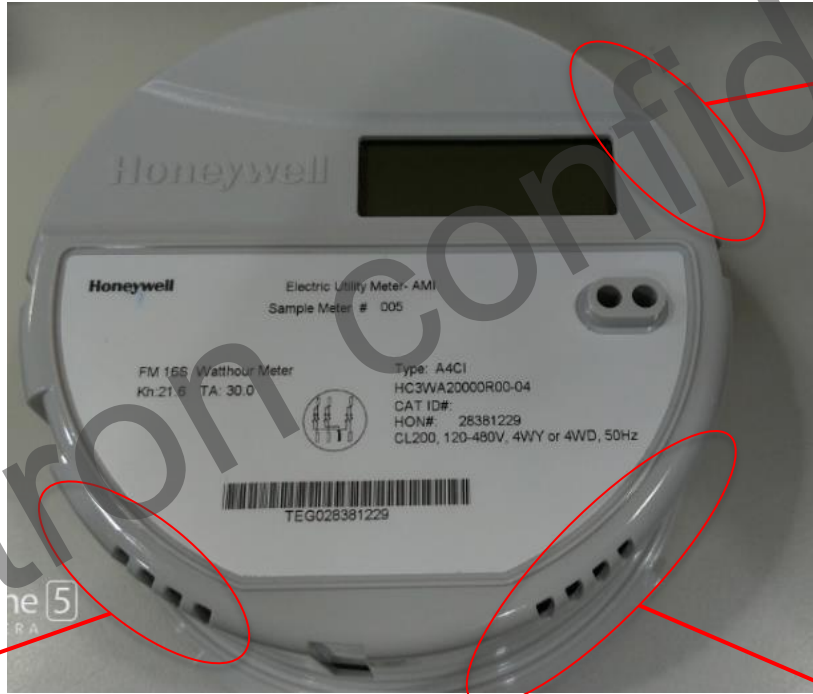
Antenna WiFi 2.4G\_ NO.5



Antenna LTE Main \_ No.3

Pegatron Confidential

# Antenna location overview



## Antenna assembly-1

1. Stick WiFi antenna onto meter top cover and put cable into second hole (yellow circle).

Cable routing: follow yellow circle.

Attached position: Follow red arrow



## Antenna assembly-2

1. Stick WiSUN antenna onto meter top cover and put cable into first hole (yellow circle).

Cable routing: follow yellow circle.

Attached position: Follow red arrow



## Antenna assembly-3

1. LTE Main antenna stick onto meter top cover and put cable into hole (yellow circle)

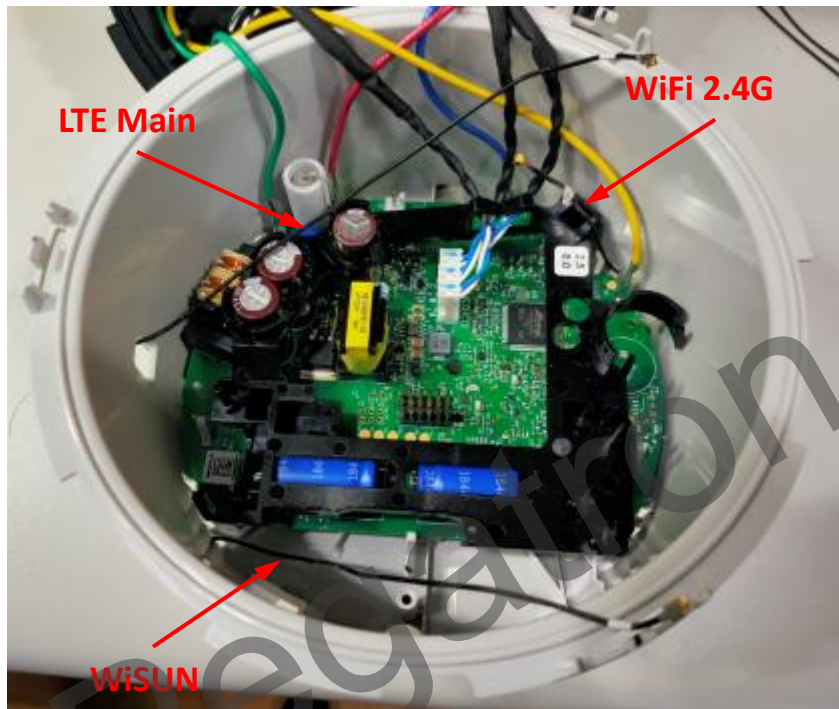
Cable routing: follow yellow circle.

Attached position: Follow red arrow



# Antenna cable location and holder assembly

1. Do the cable routing to keep antenna cables around inside surface of meter top cover.



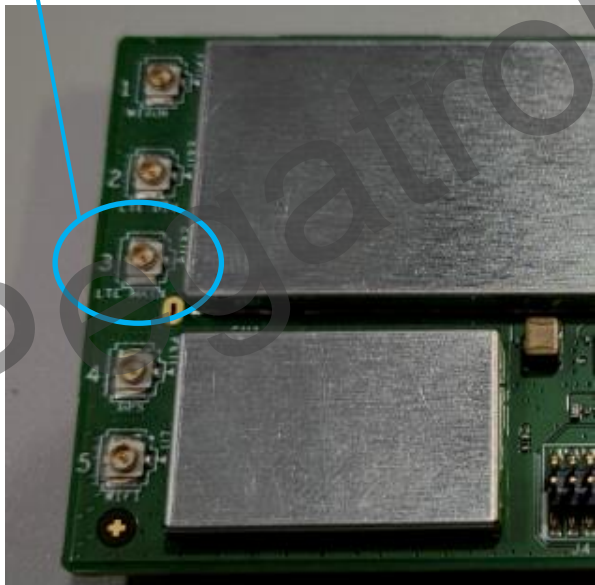
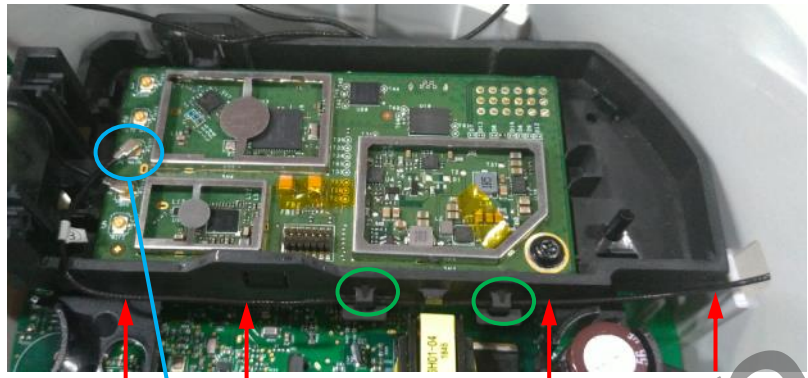
2. Clip the holder module into meter holder.

Hook: Red arrow  
Anchor point: Blue arrow  
Note: Pls make sure cables are not pinched by holder.

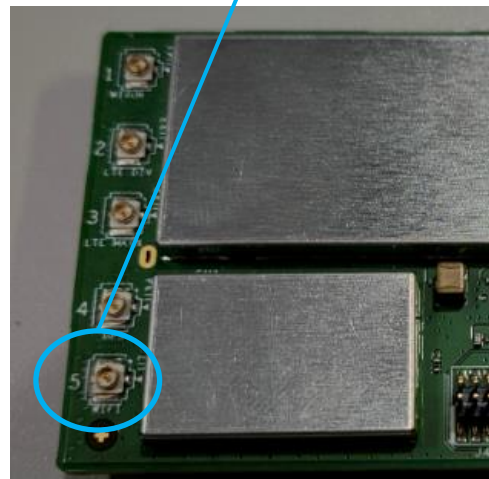


# Antenna cable routing and assembly-1

**1. The LTE Main (No.3) cable routing (red arrow) and assemble cable (green circle).  
Press IPEX connector on MB in place\_No.3 (blue circle) as below.**



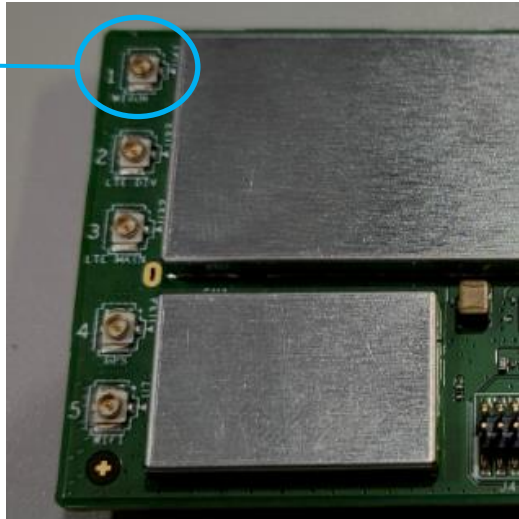
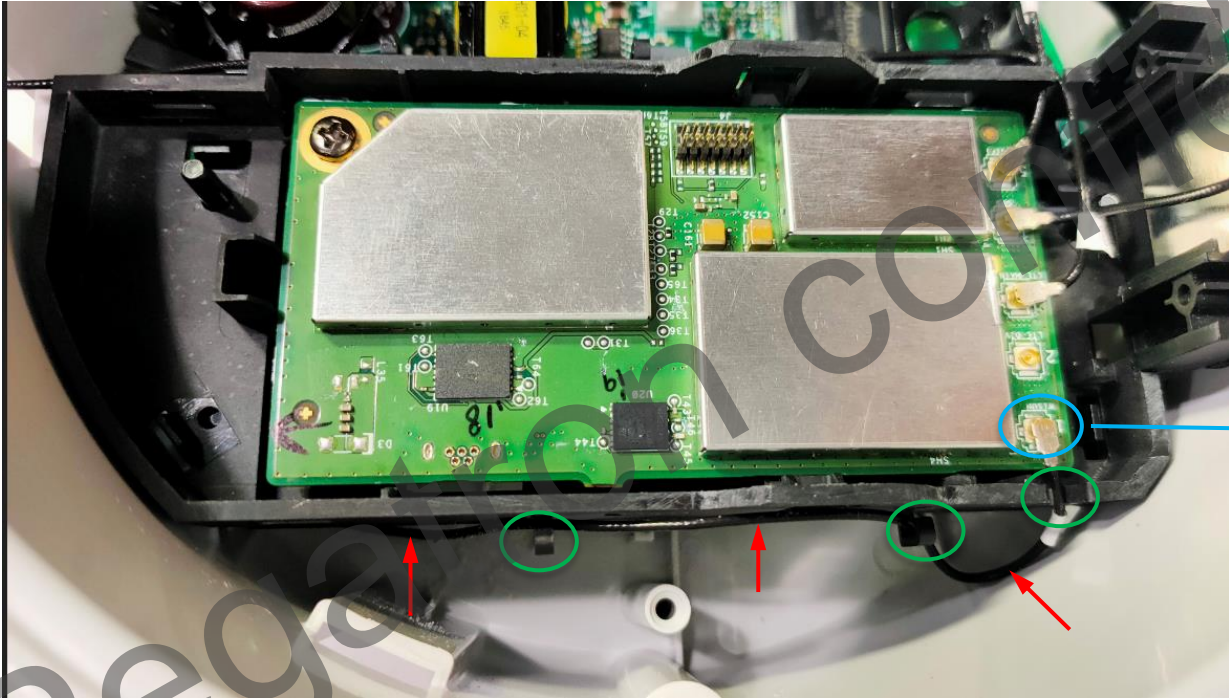
**2. The WiFi 2.4G (No.5) cable routing (red arrow) and assemble cable (green circle).  
Press IPEX connector on MB in place\_No.5 (blue circle) as below.**





# Antenna cable routing and assembly-2

1. The WiSun (No.1) cable routing (red arrow) and assemble cable (green circle). Press IPEX connector on MB in place\_No.1 (blue circle) as below.



Pegatron Confidential

Finished



Pegatron Confidential