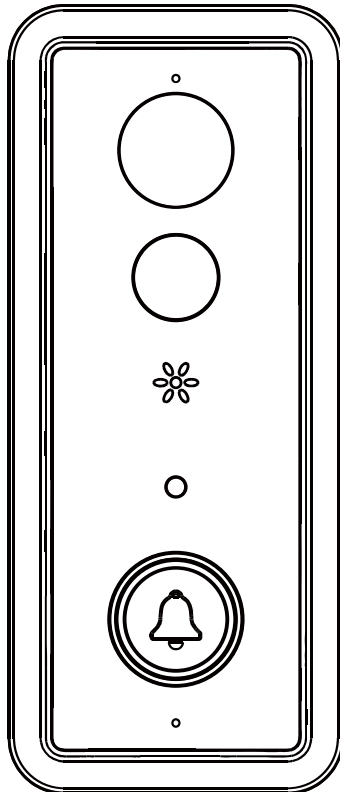


VD01

# WATERPROOF LOW-POWER GARDEN LIGHT CAMERA

## Quick Start Guide

\* Please read it carefully before using the product



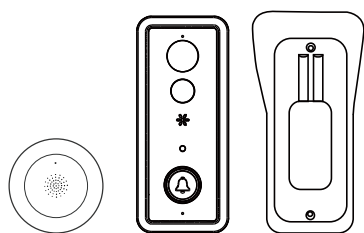


# TABLE OF CONTENTS

Package List.....	01
Appearance Introduction.....	01
Installation Guide.....	02
Chime.....	04
Equipment Connection.....	05
Add Device.....	08
QR Code Pairing Mode.....	08
Wifi Fast Connection.....	10
Device.....	11
Attention!.....	11
Features.....	12
Troubleshooting.....	12
Technical Specification.....	13

## Package Contents

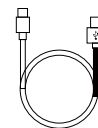
Please check and make sure the camera (hereinafter referred to as "the device") is in good condition and all below parts are included in the package.



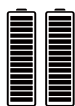
Doorbell Camera &  
Mounting Bracket



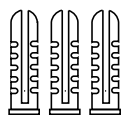
Quick Start  
Guide



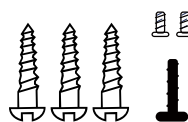
USB Cable



Battery



Expansion  
Pipe Anchors

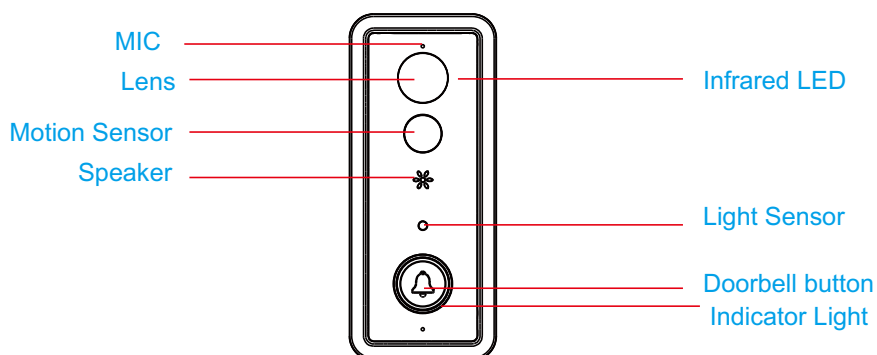


Screw Kit



Screw wrench

## Overview



**Infrared LED** The infrared light will turn on automatically when ambient light is insufficient

**Light Sensor** Checks ambient light values - when the luminance is lower than 2 lux, infrared light will be enabled automatically.

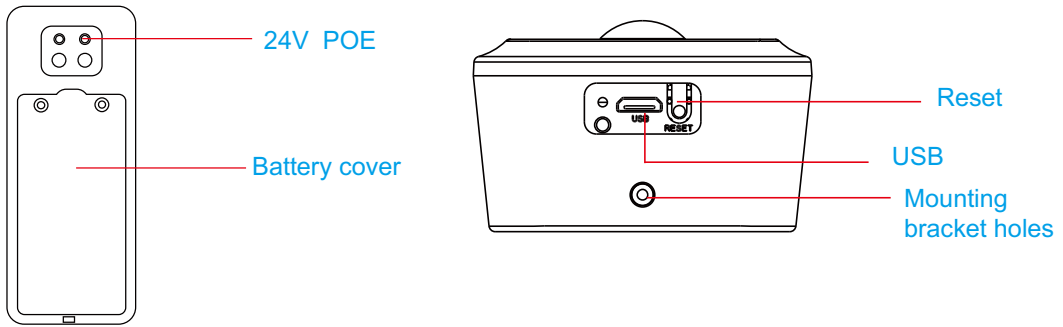
**Motion Sensor** When a person walks in front of the device, you will receive a notification on your mobile phone.

**Lens** Captures Video

**Indicator Light** Blue light flashing ---- Pairing Status  
Red light on ---- Failed Wi-Fi Connection  
Blue light on ---- Connected  
Red & Blue light on together ---- Connecting to Wi-Fi

**Mic** Picks up sounds and sends them through the voice intercom.

**Speaker** Plays voice and system sounds.



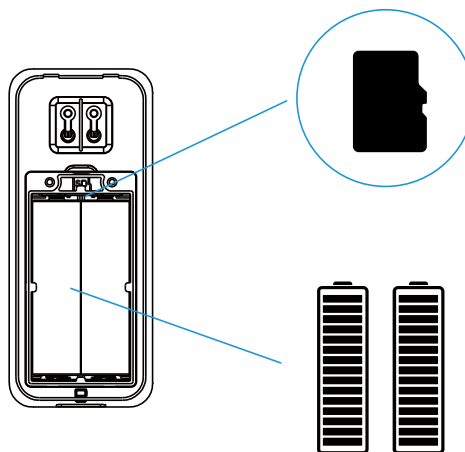
**USB** USB charging port

**Reset** Press the reset button for 5 seconds and wait for the indicator light to turn red and flash slowly.

**Screw holes** For securing the device to the base

## Mounting Guide

There are two ways to mount the device.  
Make sure to insert the batteries and an SD card before mounting.



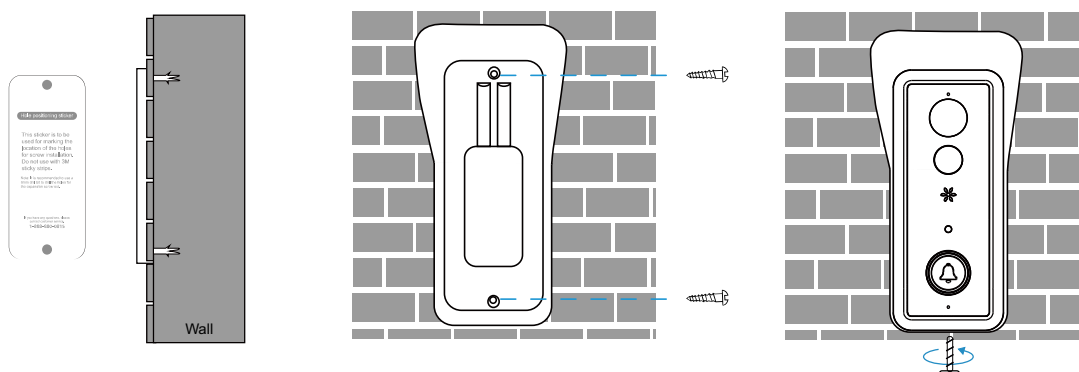
### 1. Mounting Instructions - Method One

- 1). Stick the hole positioning sticker on the spot where you want to install the doorbell. Align and drill the holes. Insert the expansion pipe anchors.

Note:

After the drilling is completed, the positioning sticker can be removed

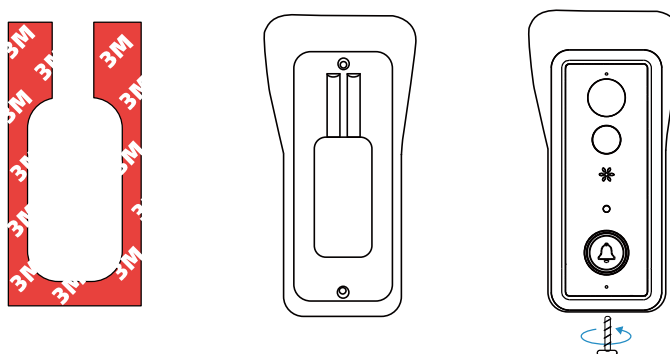
- 2). Use screws to secure the base to the wall.
- 3). Align the mounting bracket holes on the device with the holes on the base, then screw in the screws.



## 2. Mounting Instructions - Method Two

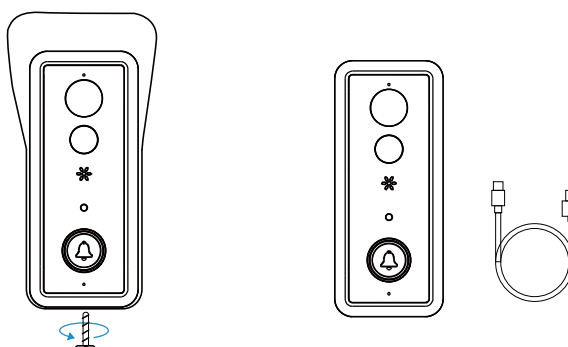
- 1). Attach the 3M sticky strips to the wall mount. Then stick to the wall in the desired location.
- 2). Align the mounting holes then insert and tighten the screw

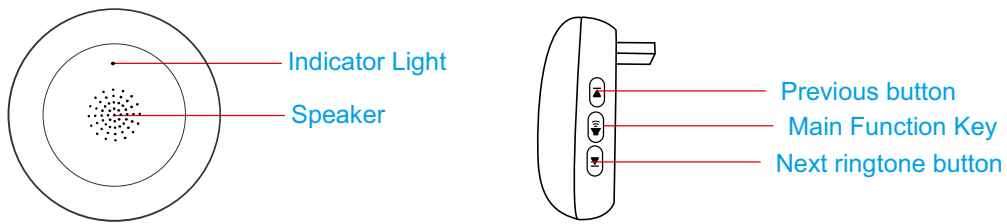
Note: Make sure to clean the surface of the wall before attaching the 3M strips



## Charging

When the device runs out of power, remove it from the base and use a 5V-2A power cord to charge it.





## 1. Pairing Instructions

One doorbell can work with one indoor unit (one-to-one) or multiple doorbells can work with one Chime.

## 2. Button Descriptions

### Main Function Key

#### 1. Volume adjustment:

Press it lightly to increase the volume by one level. When the volume is at maximum, press it again, and the volume will turn to minimum.

Note: There are 4 volume levels to choose from.

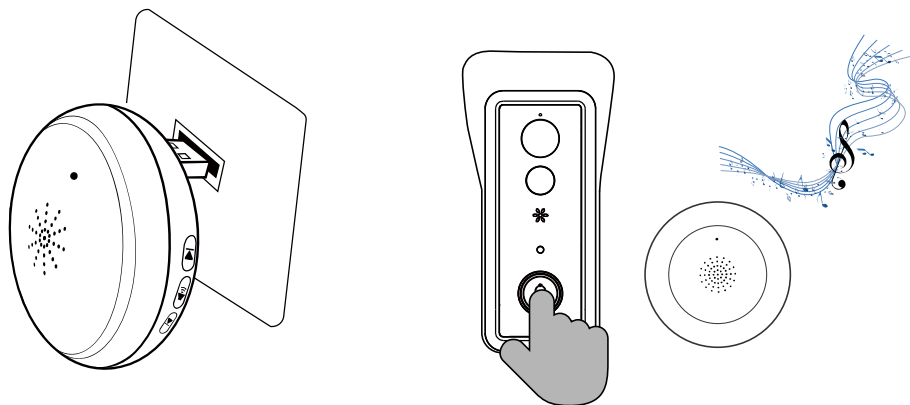
#### 2. Pairing the device

Turn on the power, then press and hold the main function button for 3 seconds. After the red light on the indoor unit flashes, then lightly press the doorbell button. When the indoor unit bell sounds, pairing is complete. After the device is paired, the red light will turn off.

The device pairing time is 15 seconds. Please press the doorbell button within 15 seconds to pair.

#### 3. Device reset

With the power cord unplugged, press and hold the main function key and plug in the power at the same time. After the red light flashes for about 3 seconds, the device will begin to delete previously paired doorbells. Once complete, the red light will turn off, and you can let go of the main function key.



**Next ringtone button**

Tap once to switch to the next ringtone

**Previous button**

Tap once to switch to the previous ringtone

Note: There are 8 different ringtones to choose from.

### 3. Indicator Light Descriptions

Blue light: When the ringtone sounds, the blue light on the device flashes.

Red light: Indicator light for when the device is paired, when you delete a paired doorbell, and for other functions

Note: If you cannot pair, check to make sure the distance between the devices isn't too far, and check that there aren't any objects blocking the signal. Then reset the device and try again.

Input power supply: Use the USB power supply with the 5V-1A voltage.

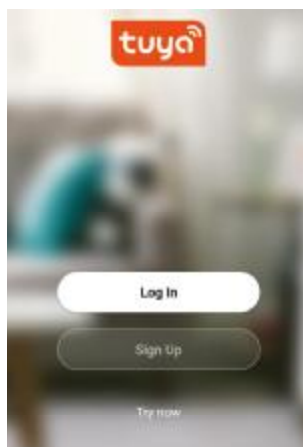
## Connecting Your Doorbell

1. You can download the TuyaSmart app by searching for TuyaSmart in your app store or by scanning the below QR code.



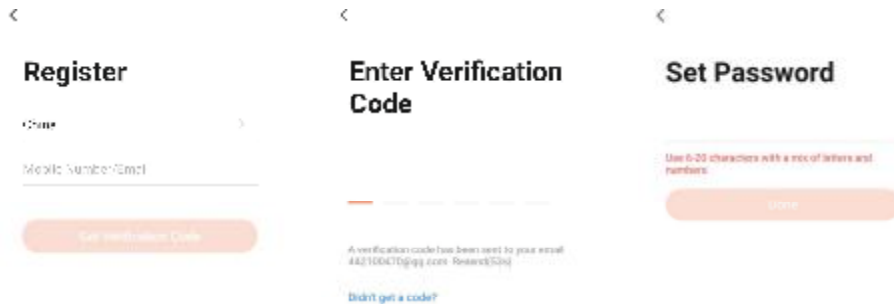
### 2. Registration, login, and password reset

- 1). Open the TuyaSmart app and tap Sign Up. In the User Agreement and Privacy Policy dialog box, carefully read the privacy policy and agreement and tap Agree to go to the account registration page.



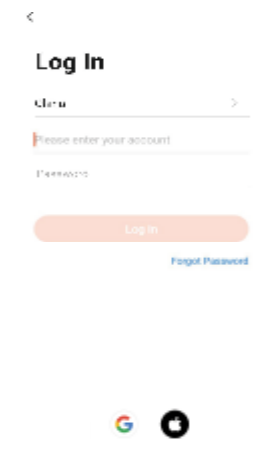


- 2). Enter your mobile phone number or email address and tap Get Verification Code. The country or region on the registration page is the same as what you have set on your mobile phone. You can also manually change the country or region before registration.
- 3). On the Enter Verification Code page, enter the verification code. On the Set Password page, set the password as per instructions and tap Done.



### 3. . Log in with your app account or a third-party account

- 1). Open the TuyaSmart app. If you have registered an account in the TuyaSmart app, tap Log In. In the User Agreement and Privacy Policy dialog box, carefully read the privacy policy and agreement and tap Agree to go to the login page.
- 2). Check the country or region on the login page. The system automatically identifies your current country or region. You can also manually select a country or region.
- 3). Enter your registered mobile phone number or email address, enter the password, and then tap Log In.
- 4). You can also use third party apps at the bottom of the screen to log in.



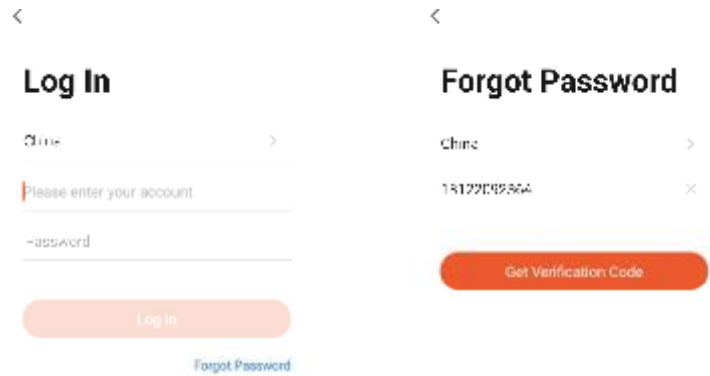
### 4. Reset password

If you forget your login password, you can reset the password following the steps below:

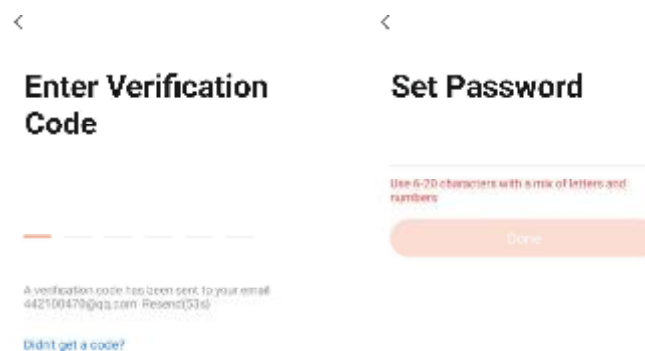
- 1). On the Log In page, tap Forgot Password
- 2). On the page that appears, check the country or region.

The system automatically identifies the current country or region where you reside. You can also manually select a country or region. If your account is registered with a mobile phone number, the country or region must be the same as the one you selected during registration.

- 3). Enter your registered mobile phone number or email address and tap Get Verification Code.

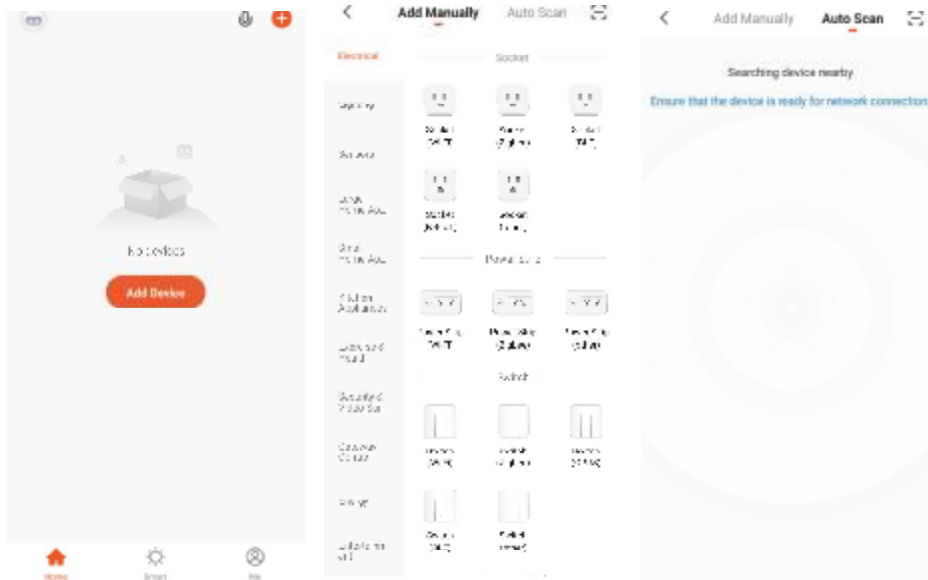


- 4). On the Enter Verification Code page, enter the verification code.
- 5). On the page that appears, enter a new password and tap Done. Then the password is reset, and you can automatically log into the app.
- 6). For security concerns, the app will detect risks in your phone system during login. If the app detects a root or jailbreaking risk, a security reminder is displayed. You can determine whether to exit the app or not. If no selection is made, the app will automatically exit.



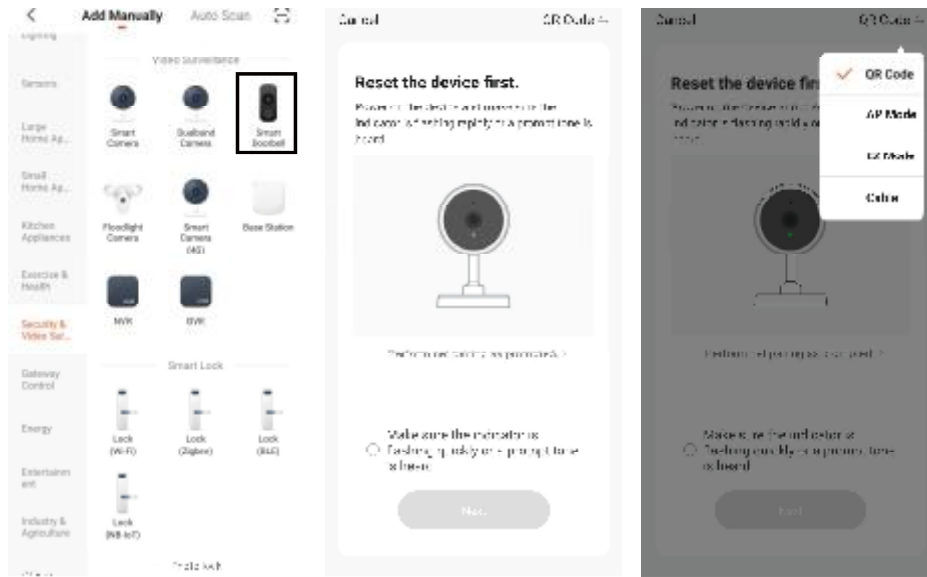
## Add Device

On the device list page, click the Add Device button in the center or click the "+" button at the top right to enter the Add Device page, which is divided into two methods: Add Manually and Auto Scan. Use Add Manually for this device.

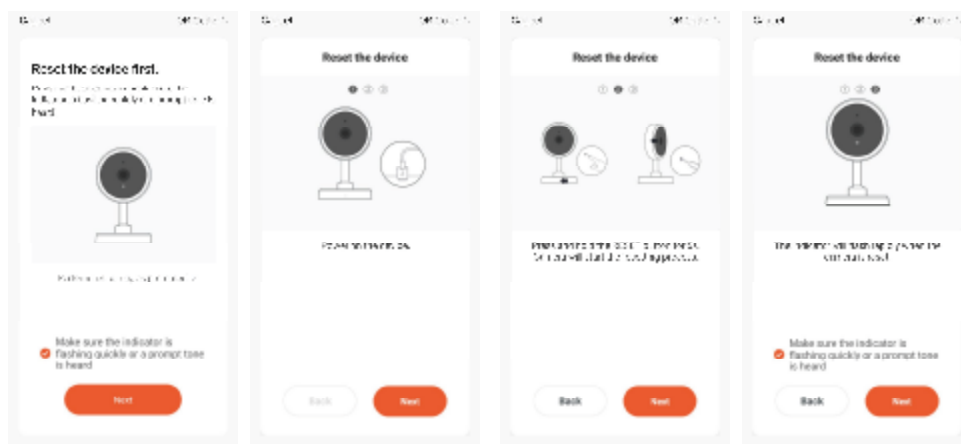


## Add Device Manually—QR Code Pairing Mode

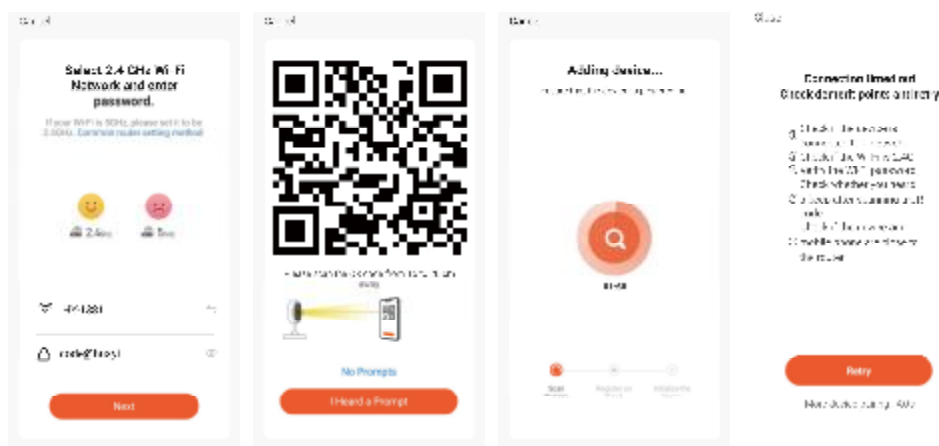
1. In addition to the Wi-Fi quick connection (default mode) and hotspot network configuration that most devices have, some devices also have a wired network configuration mode.



2. To use the QR code to configure the network, you need to set hold the reset button for 5 seconds until the indicator light is flashing rapidly.
3. The reset steps can be viewed by clicking the "Try to configure network step by step" button.

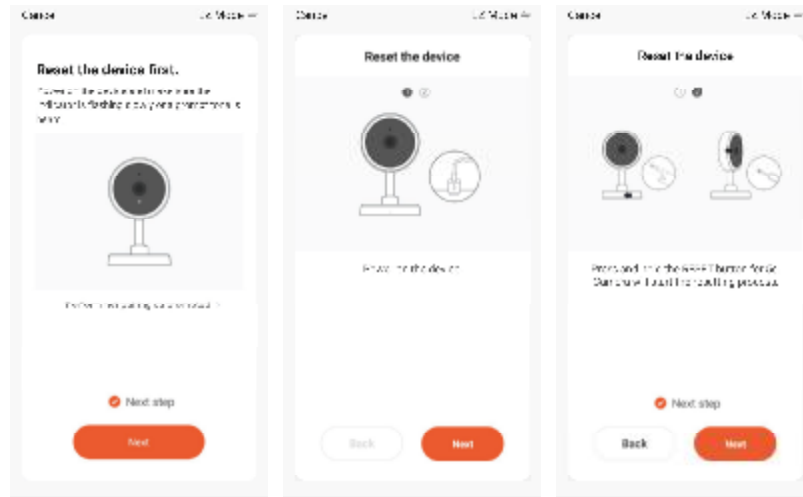


4. After clicking Next, you will be taken to the page for entering the Wi-Fi password.
5. Following the prompts on the page, face the QR code directly at the camera and keep a distance of 15-20 cm until you hear a prompt sound from the camera.
6. If you hear the prompt tone, please click the "Hear the prompt tone" button below to enter the page for adding devices.
7. If the network configuration fails, the following page will be displayed.

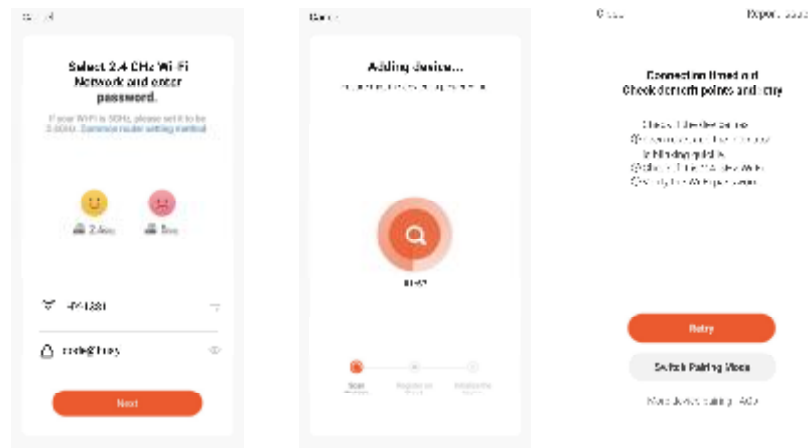


## Add Device Manually - Wi-Fi Quick Connection


1. To use WiFi quick connection, hold the reset button for 5 seconds until the indicator light of the device flashes rapidly.
2. The reset steps can be viewed by clicking the Try to configure network step by step button.



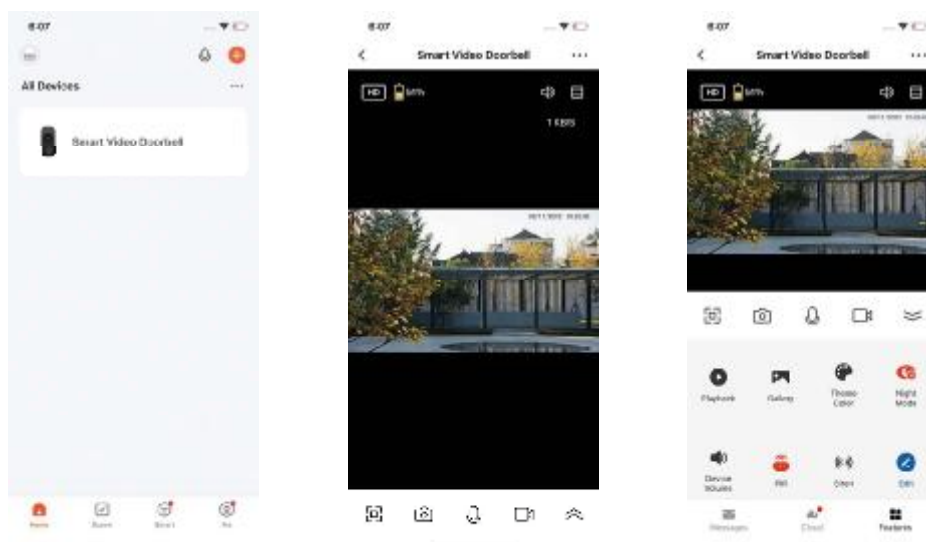
3. Click Next, and you will be taken to the page for entering the Wi-Fi password.
4. Click Next to enter the add device interface.
5. If the network configuration fails, the following interface will be displayed.
6. You can choose to switch to network distribution mode and use the QR code to configure the network.



## View device

Device successfully paired. You can find this device on the home page. Click the “” symbol to see more devices. You can check playback history, take a screenshot from video clips, or record video.

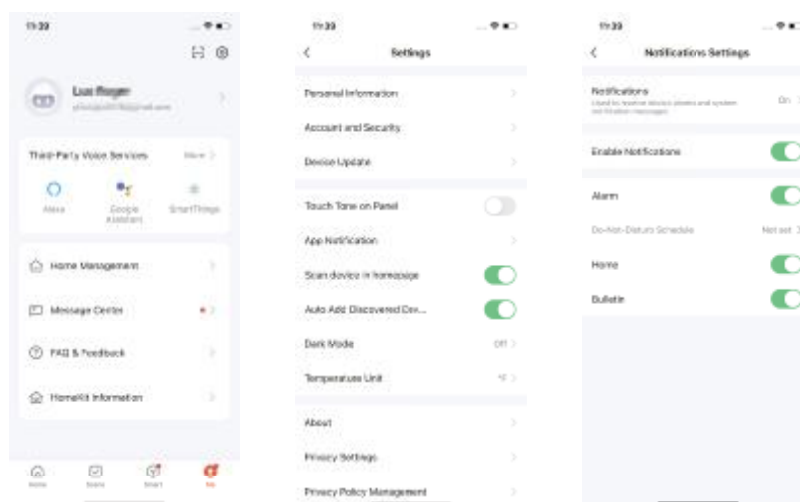
Note: You must insert the memory card to view playback videos in the app.



## Set

The app needs to open the message notification to receive the visitor dynamics of the smart doorbell at any time.

Click "Me" and set the button in the upper right corner to open the app message notification.



## Attention!

1. This device is powered by Lithium polymer batteries and can be used for 3months when fully charged. The app on your phone will prompt you if the battery is low. Please charge the device in a timely manner after receiving the prompt.
2. Please make sure your device can receive Wi-Fi signal in the location where you mount it, especially when mounting outdoors.If Wi-Fi is not available or the signal is weak, you can try use a Wi-Fi signal amplifier.

3. This device is a low-power smart product which supports remote wake-up through the app via motion sensor or doorbell. The app will enter hibernation automatically and after 30 seconds of inactivity.
4. Dual-frequency Wi-Fi routers need to be separated into 2.4G and 5G channels, not setup as two-in-one. To avoid interference that can cause the video to freeze, it is recommended to connect the doorbell to the 2.4G network and your mobile phone to the 5G network.
5. If the pairing request times out, press the reset button to begin pairing again.
6. Check the current signal strength in Settings - "Device Information".

## Features



Two 18650 specification batteries work



One Million HD Pixels with Ultra-thin 2.6MM WideAngle Lenses



Supports waking up the device by mobile phone within 1 second.



2.4G Wi-Fi connection



High quality two-way talk with noise cancellation



Motion detection via infrared activates the app immediately when someone is at your door.



Day and night mode can be switched automatically. The image is clear and visible for your security 24 hours a day

## Troubleshooting

The device cannot connect to Wi-Fi:

1. Please confirm that the wireless network is on the 2.4G protocol.
2. Make sure the indicator light is red and flashing slowly.
3. Check that the password is correct, and make sure there are no extra spaces.

The device is online and there is a trigger event, but the mobile phone cannot receive the push message

1. Check that the mobile phone has enabled the self-starting function in application permissions.
2. Turn off battery optimization and automatic app close during standby.

What power supply modes does the device support?

The device can work with two 18650 battery, or it can be charged by USB.

## Technical Specification

Resolution	1920*1080 P
Field of Angle View	2.6mm @ F2.0/150°
IR LED	6*850 nm
Wi-Fi	802.11 b/g/n
Audio	Two-way talk with noise cancellation
Recording	TF card ( Above C10 high speed brand card is needed )
Storage	Cloud Storage or 8G/16G/32G TF card
Battery	2pcs 18650 batteries are required
Monitoring	Motion Detection, Remote Live View
Notifications	Push Notifications within 1 second
Device Wakeup	Within 600 ms

**Note:** these specifications are up to date as of time of writing. Changes may occur without prior warning.



**Label:**

This device complies with part 15 of the FCC Rules. Operation is subject to the following two conditions: (1) This device may not cause harmful interference, and (2) this device must accept any interference received, including interference that may cause undesired operation.

**FCC warning:**

Any Changes or modifications not expressly approved by the party responsible for compliance could void the user's authority to operate the equipment.

Note: This equipment has been tested and found to comply with the limits for a Class B digital device, pursuant to part 15 of the FCC Rules. These limits are designed to provide reasonable protection against harmful interference in a residential installation. This equipment generates uses and can radiate radio frequency energy and, if not installed and used in accordance with the instructions, may cause harmful interference to radio communications. However, there is no guarantee that interference will not occur in a particular installation. If this equipment does cause harmful interference to radio or television reception, which can be determined by turning the equipment off and on, the user is encouraged to try to correct the interference by one or more of the following measures:

- Reorient or relocate the receiving antenna.
- Increase the separation between the equipment and receiver.
- Connect the equipment into an outlet on a circuit different from that to which the receiver is connected.
- Consult the dealer or an experienced radio/TV technician for help.

This equipment complies with FCC radiation exposure limits set forth for an uncontrolled environment. This equipment should be installed and operated with minimum distance 20cm between the radiator & your body.

## CONTACT US

For any inquiries, feel free to contact us, and we will respond within 24 hours.

E-mail: [after-saleservice011@outlook.com](mailto:after-saleservice011@outlook.com) Tel: 1-888-271-9990

Google and Android are trademarks of Google LLC.

Manufacturer: Shenzhen Electron Technology Co., Ltd.

Address: Building 2, Workshop, Yingfeng Industrial Park, Tantou Community,  
Songgang Street, Bao'an District, Shenzhen