



Antenna Approval Sheet

For

MV01-02 Project

Customer	永福昌	Project	MV01-02
Band	WiFi 2.4GHZ		
ZC PN	YC001-BA-73/YC031-XD-16		
Version	R:A	Data	2023-5-6

RF		ME	
Checked By			
Confirmed By			
Cust Confirm			

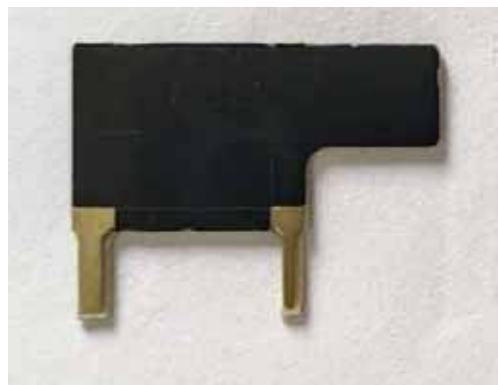


1. Summary of the DUT

MV01 Picture



WiFi Antenna



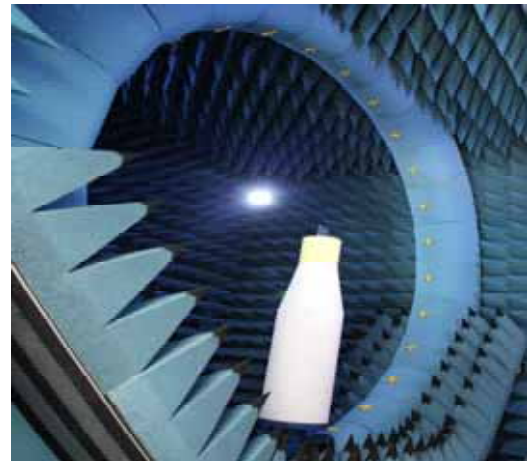
2. Electrical Specification:

Antenna types	Built-in WiFi Antenna
Frequency	2400-2500MHz, HZ
Impedance	50 Ω
VSWR	< 2.0
Gain	2.4GHZ 1.5 dbi
Efficiency	>35 %
Antenna Material	PCB/Spring coil
Connector Type	Soldering



2. Test Condition

3.1	测试项目	测试设备和型号	备注
1.有源测试	1. TRP 2. TIS	1. 3D microwave darkroom (Satimo SG24) 2. Comprehensive test instrument (CMW500) 3. Agilent 8960 E5515C	
2.无源测试	1. Antenna Gain 2. S.W.R 3. Return Loss 4. Radiation Pattern	1. Network analyzer (R&S ZVL6) 2. Network analyzer (HP 8753D)	



3.2 Matching Circuit The matching circuit was Default



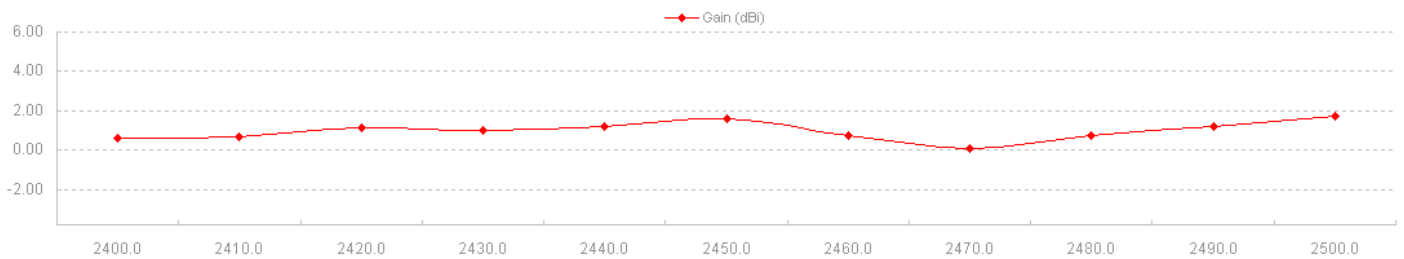
4. RF Performance –WIFI Antenna

4.1.1 Active test data

Item	Standard	Band	Channel	Frequency	最大功率	最小灵敏度	TRP	TIS
1	WIFI (AP)	WIFI_B (11M)	1	2412	20.26	-90.85	15.72	-86.31
2	WIFI (AP)	WIFI_B (11M)	6	2437	19.86	-91.41	15.01	-86.56
3	WIFI (AP)	WIFI_B (11M)	11	2462	20.82	-90.99	15.48	-85.65

4.1.2 Passive parameters

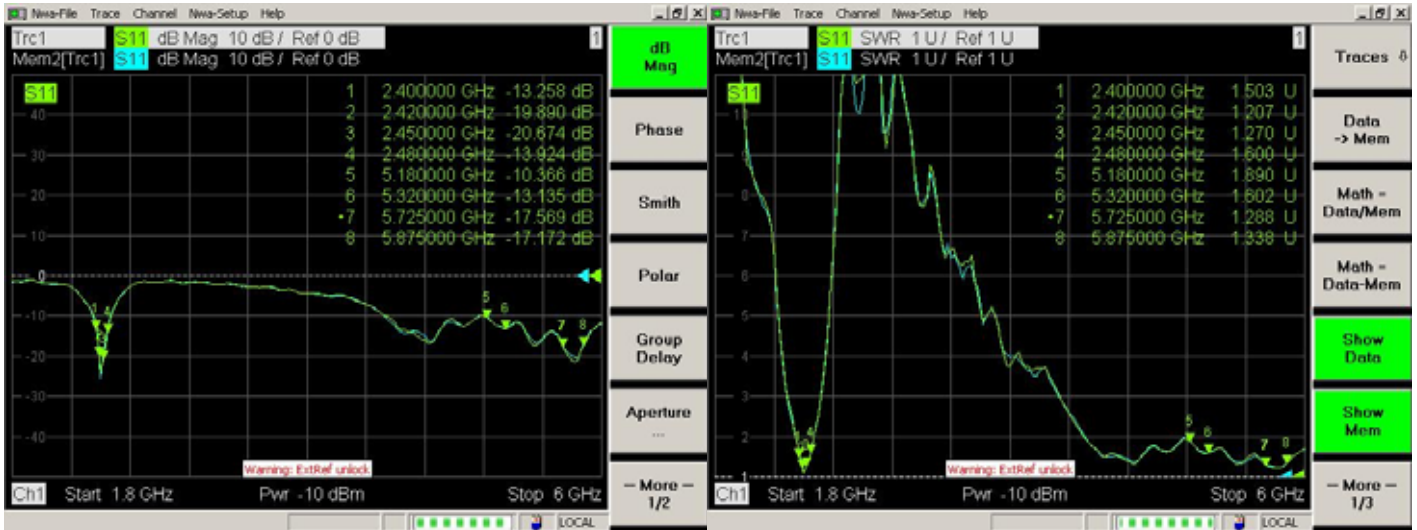
Freq. (MHz)	2400	2410	2420	2430	2440	2450	2460	2470	2480	2490	2500
Gain (dBi)	0.58	0.66	1.1	1.02	1.17	1.59	0.72	0.08	0.72	1.19	1.73
Efficiency (%)	40.3	40.2	40.7	42.4	44.6	48.4	42.2	36.3	40	42.5	45.4



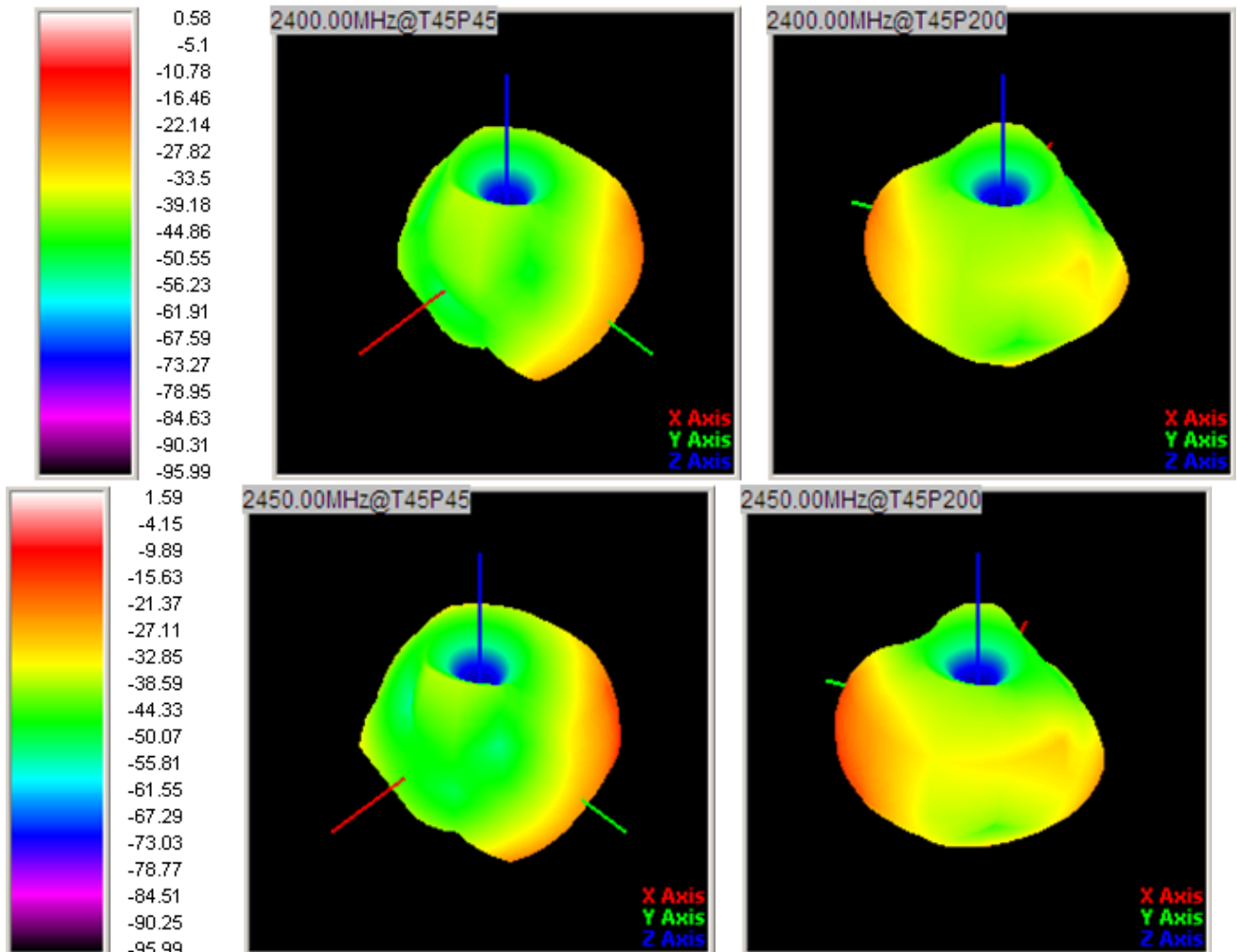


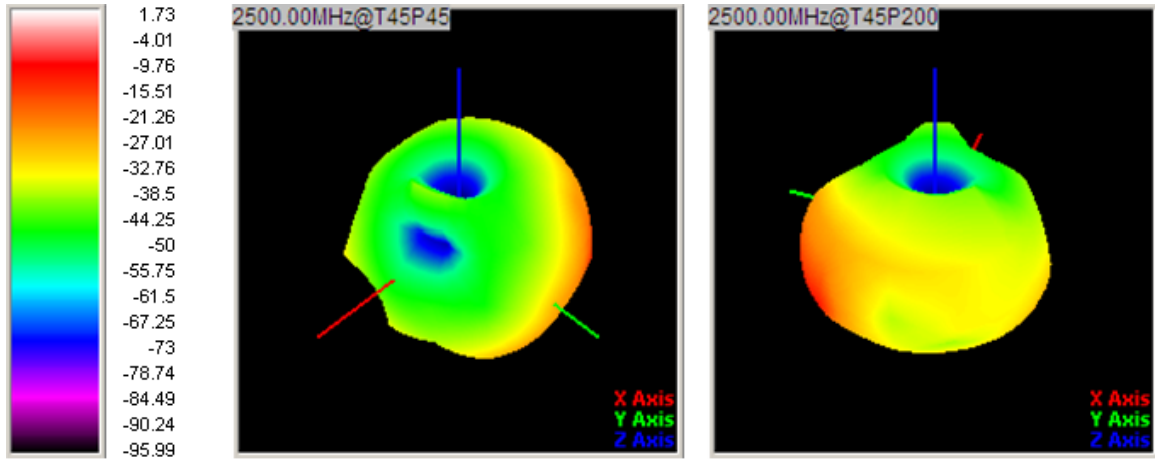
4.1.3 Parameter

Frequency (MHz)	2400	2450	2480
Return Loss(dB)	-13.2	-20.6	-13.9
VSWR	1.53	1.27	1.6



4.1.4 Antenna 3D Radiation Pattern (Unit:dbi)







5. ME Drawing for the antenna

