

深圳市亿圣邦科技有限公司

Shenzhen Yishengbang Technology Co., Ltd Antenna Test Report

Customer: 一恒科

Project: 门铃

Product:WIFI Antenna

Report date: 2024.4.7

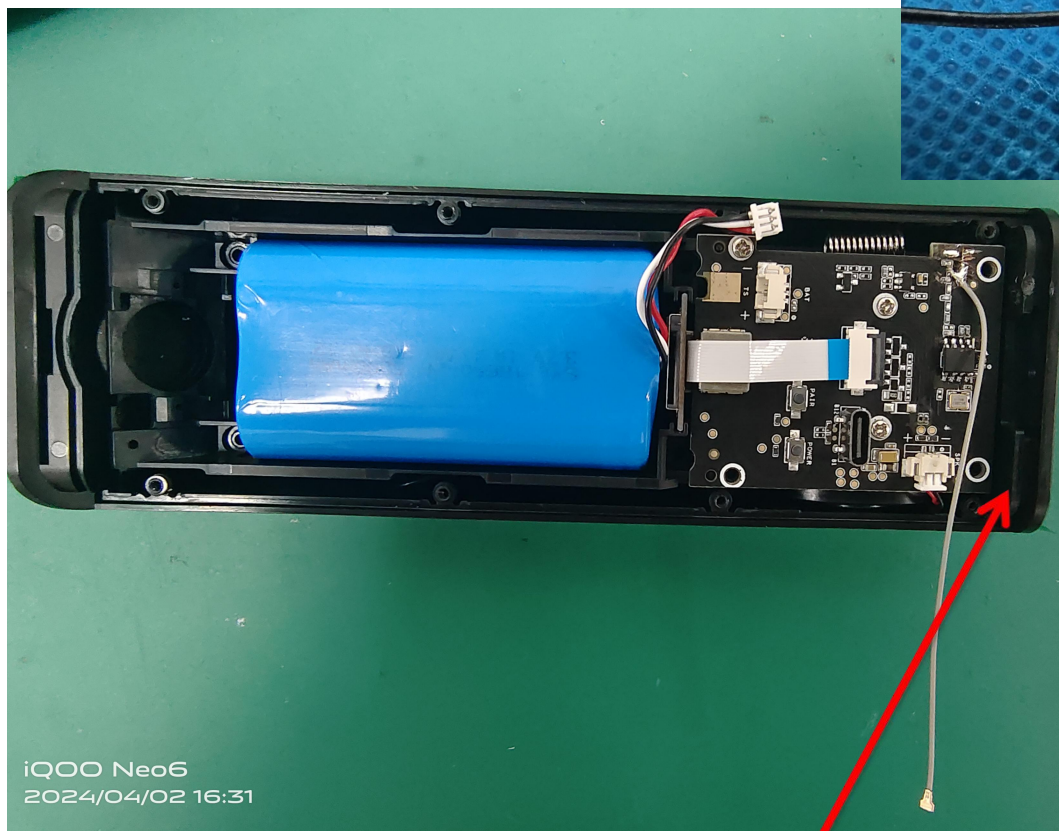
Prepared by : 罗涛

Checked by : 黄震

Approved by : 林美财

1. Product Overview & Dimension

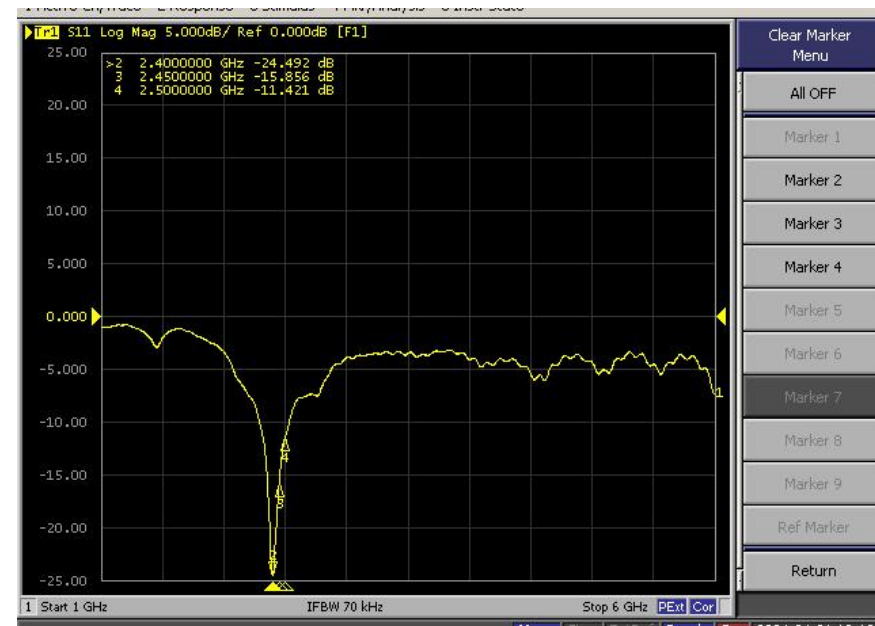
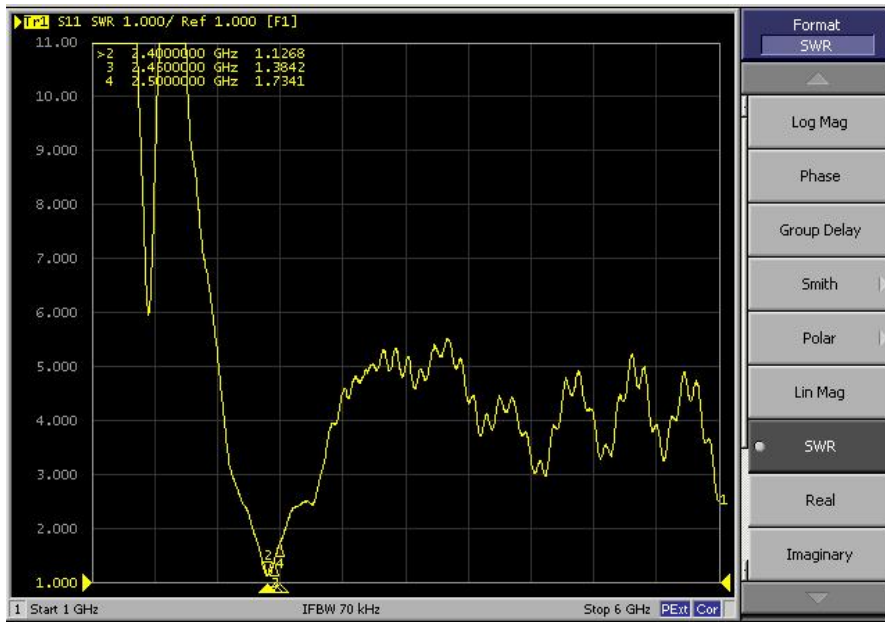
天线贴放位置和机器环境处理照片



WIFI天线贴放位置

2. Test Result

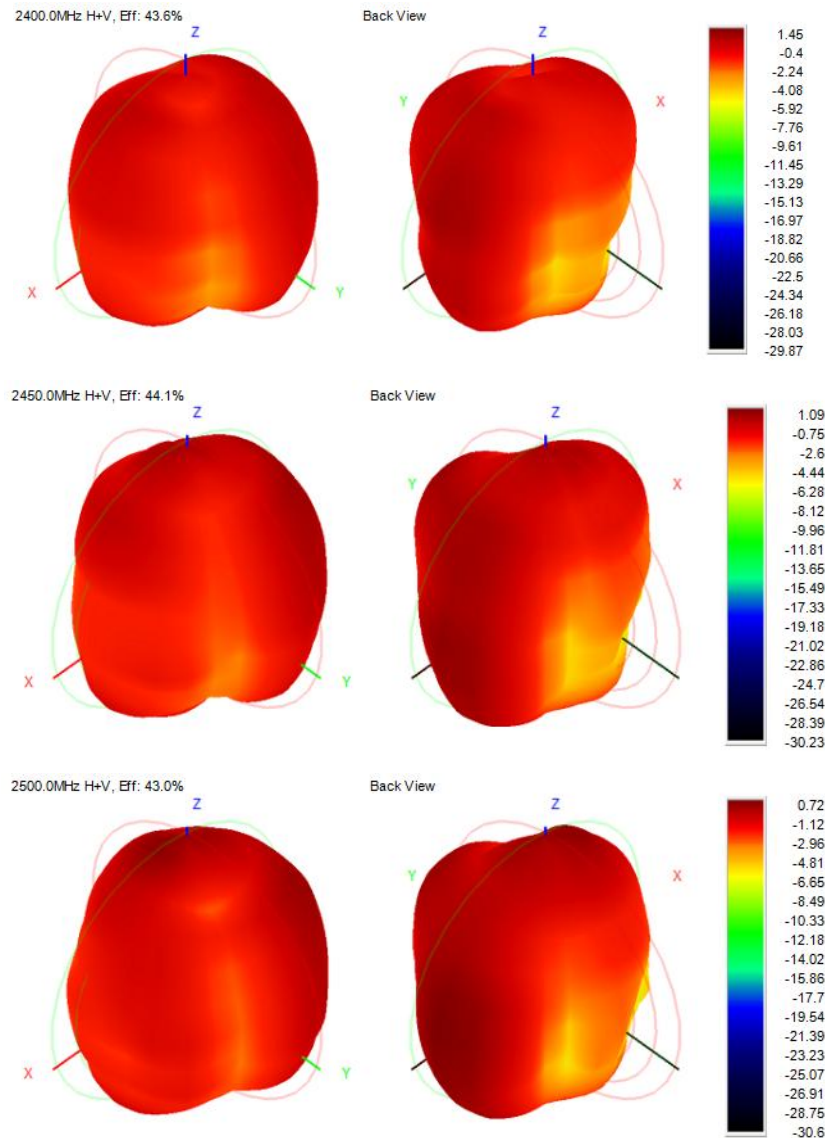
2.1 VSWR/S11 (WIFI)



2. Test Result

无源数据

Frequency (MHz)	Efficiency (dBi)	Gain (dBi)	Efficiency (%)
2400.0	-3.60	1.45	43.64
2410.0	-3.34	1.97	46.38
2420.0	-3.52	1.70	44.47
2430.0	-3.42	1.56	45.45
2440.0	-3.56	1.29	44.01
2450.0	-3.56	1.09	44.08
2460.0	-3.78	0.65	41.92
2470.0	-3.54	0.96	44.22
2480.0	-3.39	1.29	45.80
2490.0	-3.57	0.91	43.97
2500.0	-3.67	0.72	42.99



2. Test Result

WIFI Antenna 有源数据

11B-11Mbps		
	TRP	TIS
1	12.79	-84.04
6	13.49	-84.83
11	13.24	-84.37

3. Conclusions

谢谢！