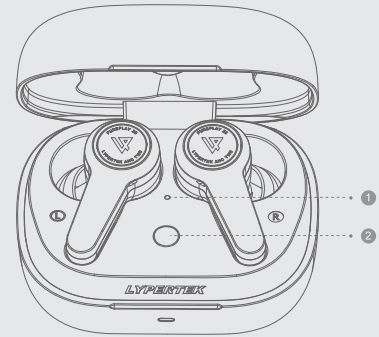


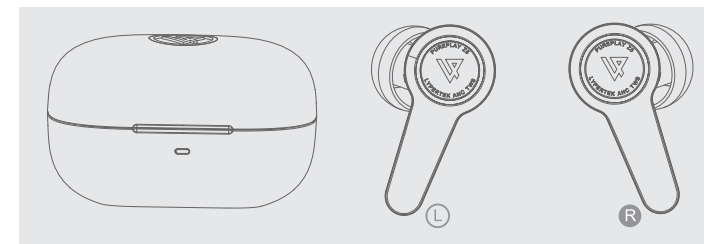
说明书折页: 105g双铜纸 / 尺寸100x100mm , 展开尺寸: 400x100mm

封底



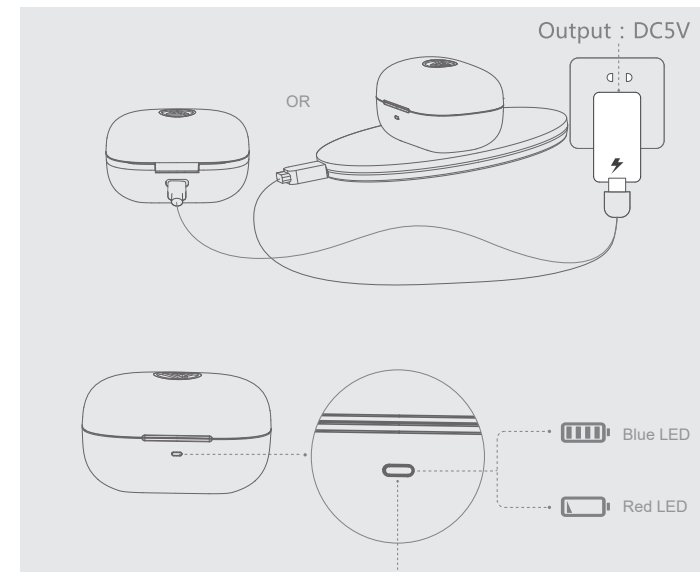
1. INSIDE LED INDICATOR: Blue/Red blinking - Pairing;  
Blue - Connected;  
Red - Earbuds are under charging;

2. RESET BUTTON: Press & hold for 2~ 7 seconds - Enter Pairing Mode.  
Press & hold for > 8 seconds - Reset.



CONTROL

⏻ Power On	x1	or	x1
⏻ Power Off	x3 and hold 3s	or	x3 and hold 3s
⏮ Play/Pause	x1	or	x1
⏪ Previous Track	x2		
⏩ Next Track			x2
🔊 Volume Up			x3
🔊 Volume Down	x3		
☎ Answer Call	x1	or	x1
☎ End Call	x1	or	x1
🚫 Reject Call	x2	or	x2
🗣 Voice Assistant	x2 and hold 1s	or	x2and hold 1s
🔊 ANC/Ambient/ANC OFF:	x1 and hold 1s	or	x1and hold 1s



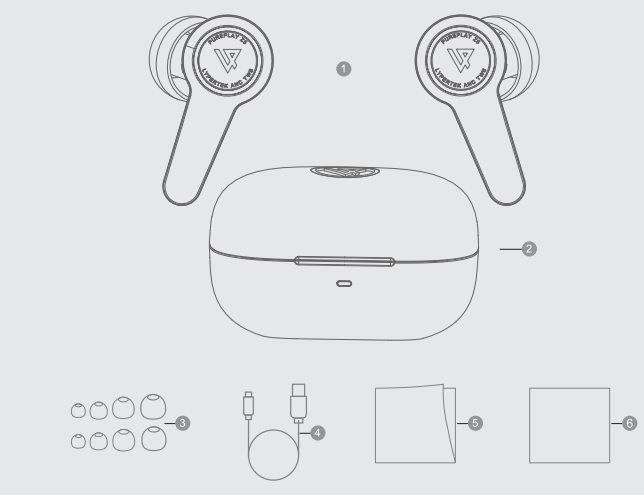
CHARGING

≥10%~100% The blue light flashes 3 times with an interval of 1s  
 ≤1%~≤10% The red light flashes 3 times with an interval of 1s



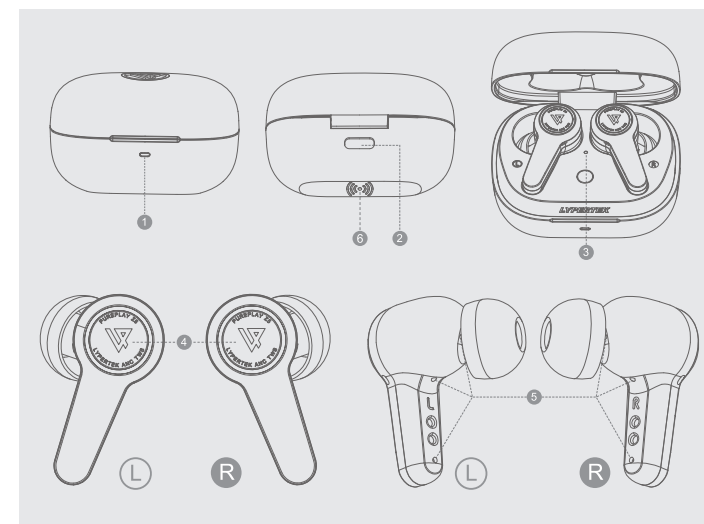
**QUICK START GUIDE**

封面  
正面



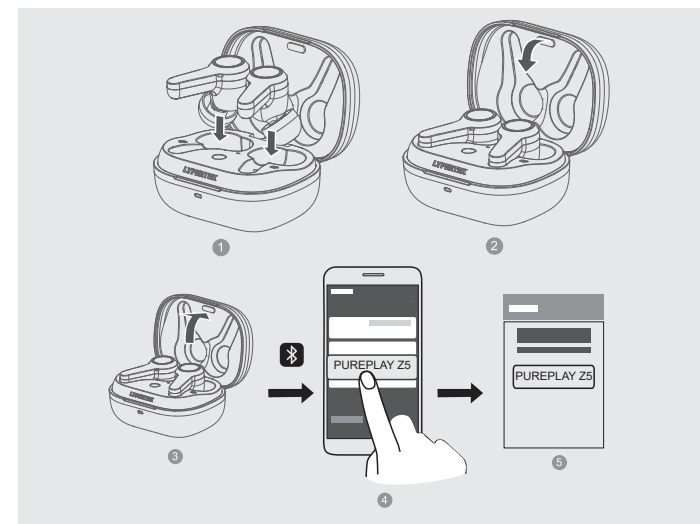
WHAT IS INSIDE?

- 1 PUREPLAY Z5
- 2 Charging Case
- 3 XS, S, L, XL Silicone Tips
- 4 USB Type-C Cable
- 5 Quick Start Guide
- 6 Thank You Card



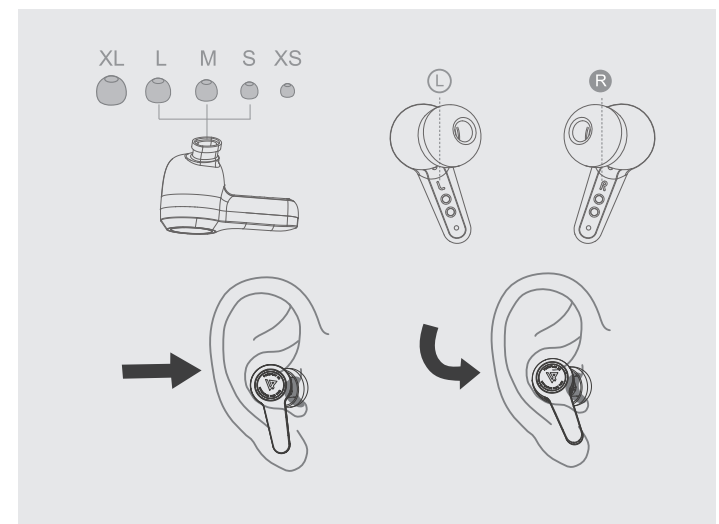
DEVICE LAYOUT

- 1 Case LED Indicator
- 2 Type-C Charging Port
- 3 Earbuds Status LED Indication
- 4 Touch Control Area
- 5 Microphone
- 6 Wireless Charge



HOW TO PAIR?

- 1 Put PUREPLAY Z5 into the Charging Case
- 2 Close the Charging Case
- 3 Open the Charging Case, PUREPLAY Z5 will enter Bluetooth Pairing Mode Automatically
- 4 Select LYPERTEK Z5 from the DEVICES List in the phone
- 5 Connected



HOW TO WEAR?

- 1 Choose the suitable eartips
- 2 Insert PUREPLAY Z5 into the ears
- 3 Twist slightly until it fits well

背面

FCC Statement

This device complies with part 15 of the FCC rules. Operation is subject to the following two conditions: (1) this device may not cause harmful interference, and (2) this device must accept any interference received, including interference that may cause undesired operation.

Changes or modifications not expressly approved by the party responsible for compliance could void the user's authority to operate the equipment.

NOTE: This equipment has been tested and found to comply with the limits for a Class B digital device, pursuant to part 15 of the FCC Rules. These limits are designed to provide reasonable protection against harmful interference in a residential installation. This equipment generates uses and can radiate radio frequency energy and, if not installed and used in accordance with the instructions, may cause harmful interference to radio communications. However, there is no guarantee that interference will not occur in a particular installation. If this equipment does cause harmful interference to radio or television reception, which can be determined by turning the equipment off and on, the user is encouraged to try to correct the interference by one or more of the following measures:

- Reorient or relocate the receiving antenna.
- Increase the separation between the equipment and receiver.
- Connect the equipment into an outlet on a circuit different from that to which the receiver is connected.
- Consult the dealer or an experienced radio/TV technician for help.

The device has been evaluated to meet general RF exposure requirement. The device can be used in portable exposure condition without restriction.