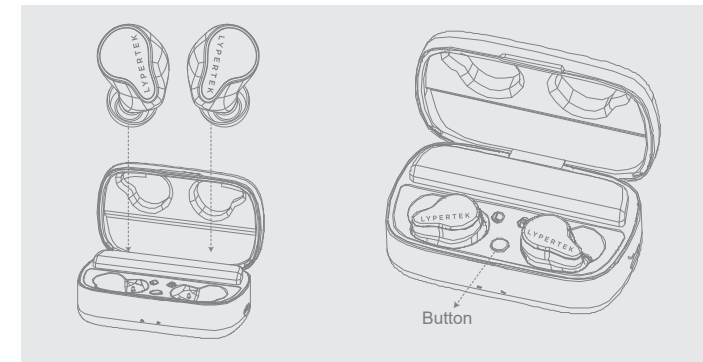


说明书折页: 105g双铜纸 / 尺寸100x100mm, 展开尺寸: 400x100mm

封底

### CONTROL

- = Tap
- = Tap and hold
- ⏻ Power On
- ⏻ Power Off
- ⏸ Play/Pause
- ⏮ Previous Track
- ⏭ Next Track
- 🔊 Volume +
- 🔊 Volume -
- ☎ Answer Call
- 📞 End Call
- 📞 Reject Call
- 🗣 Voice wake-up



#### HOW TO RESET:

1. Put PUREPLAY C3 into the charging case;
2. Press 5 times on the button.

#### MULTI-POINT CONNECTION:

1. Connect the first device
  2. Turn off Bluetooth on the first device
  3. Connect the second device
  4. Turn Bluetooth back on for the first device
- This allows both devices to be connected simultaneously in a multi-point Bluetooth configuration.

Thank you for choosing LYPERTEK  
We're happy if you're happy.  
So why not let us and others know?

- 📱 Tell your friends and family
- ✅ Write a review online and share your experience
- 📺 Join us on social media

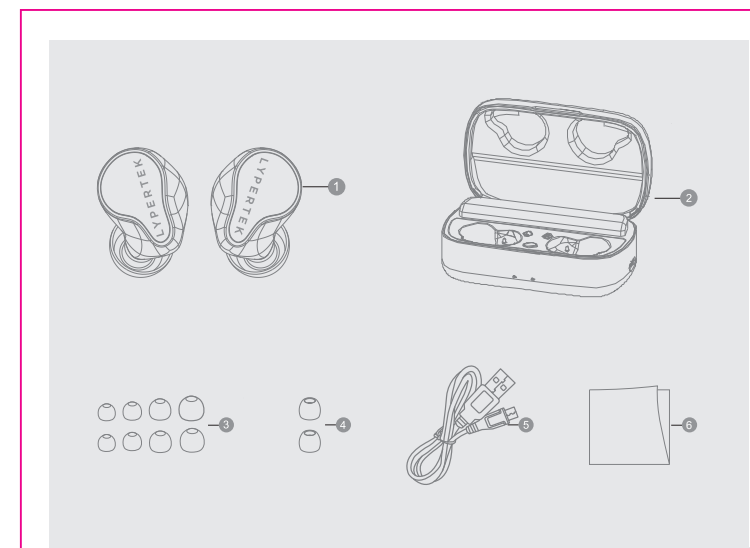
Facebook: /lypertek Instagram: @lypertek

Please don't hesitate to contact us for any questions about our products and services.  
We are there for you: [lypertek.com/support](https://lypertek.com/support) or visit our website [lypertek.com](https://lypertek.com)

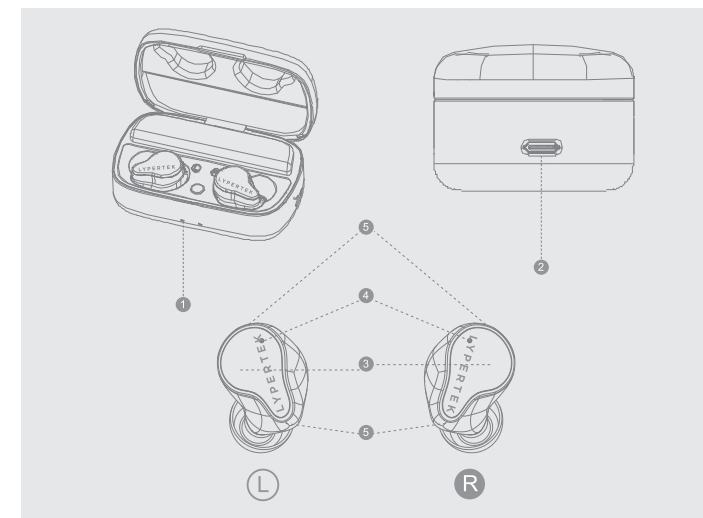
FCC ID: 2AW9I-C3

封面

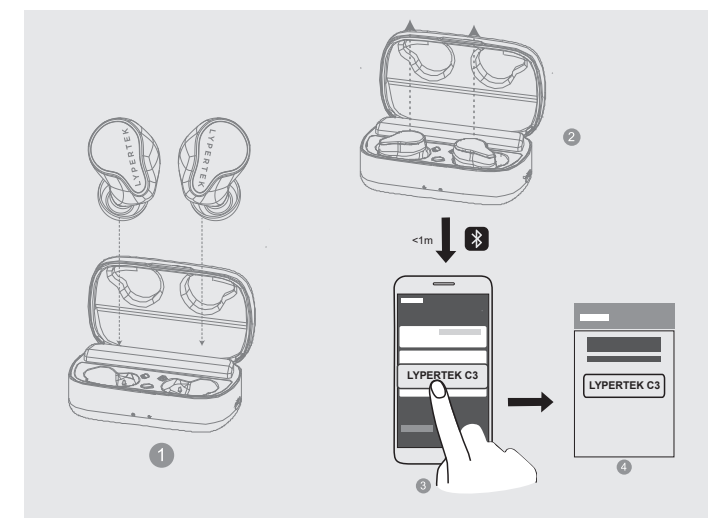
正面



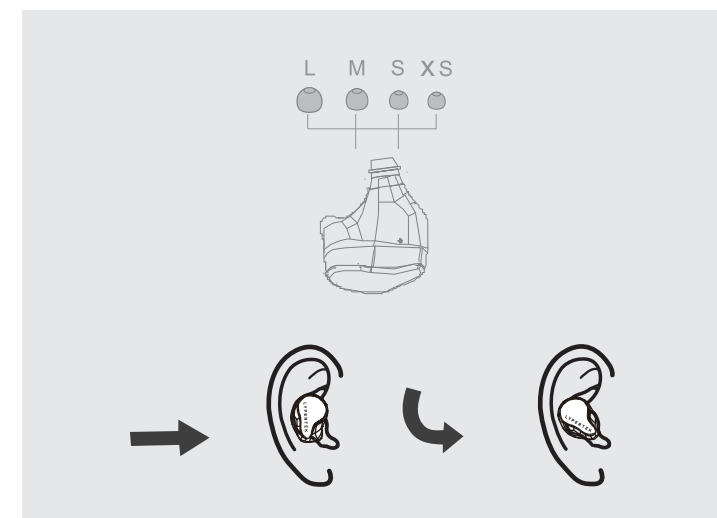
- #### WHAT IS INSIDE?
- |                             |                     |
|-----------------------------|---------------------|
| 1 LYPERTEK C3               | 4 M Foam Tips       |
| 2 Charging Case             | 5 USB Type-C Cable  |
| 3 XS, S, M, L Silicone Tips | 6 Quick Start Guide |



- #### DEVICE LAYOUT
- 1 Case LED Indicator
  - 2 Type-C Charging Port
  - 3 Touch Control Area
  - 4 LYPERTEK C3 Indicator
  - 5 Microphone



- #### HOW TO PAIR?
- 1 Put LYPERTEK C3 into Charging Case.
  - 2 Take out LYPERTEK C3 from Charging Case, it will enter the pairing mode automatically.
  - 3 Select LYPERTEK C3 from the DEVICES list in the phone.
  - 4 Connected



- #### HOW TO WEAR?
- 1 Choose the suitable eartips
  - 2 Insert LYPERTEK C3 into the ears
  - 3 Twist slightly until it fits well

背面

## **FCC Statement**

This device complies with part 15 of the FCC rules. Operation is subject to the following two conditions: (1) this device may not cause harmful interference, and (2) this device must accept any interference received, including interference that may cause undesired operation.

Changes or modifications not expressly approved by the party responsible for compliance could void the user's authority to operate the equipment.

NOTE: This equipment has been tested and found to comply with the limits for a Class B digital device, pursuant to part 15 of the FCC Rules. These limits are designed to provide reasonable protection against harmful interference in a residential installation. This equipment generates uses and can radiate radio frequency energy and, if not installed and used in accordance with the instructions, may cause harmful interference to radio communications. However, there is no guarantee that interference will not occur in a particular installation. If this equipment does cause harmful interference to radio or television reception, which can be determined by turning the equipment off and on, the user is encouraged to try to correct the interference by one or more of the following measures:

- Reorient or relocate the receiving antenna.
- Increase the separation between the equipment and receiver.
- Connect the equipment into an outlet on a circuit different from that to which the receiver is connected.
- Consult the dealer or an experienced radio/TV technician for help.

The device has been evaluated to meet general RF exposure requirement. The device can be used in portable exposure condition without restriction.