

TeamStream

TS-100

Quick Start Guide



SAFETY INSTRUCTIONS

Please review the following safety precautions. If this is the first time using this model, then read this manual before installing or using the product. If the product is not functioning properly, please contact your local dealer or Aurora for further instructions.



The lightning symbol in the triangle is used to alert you to the presence of dangerous voltage inside the product that may be sufficient to constitute a risk of electric shock to anyone opening the case. It is also used to indicate improper installation or handling of the product that could damage the electrical system in the product or in other equipment attached to the product



The exclamation point in the triangle is used to alert you to important operating and maintenance instructions. Failure to follow these instructions could result in injury to you or damage to the product.



Be careful with electricity:

- **Power outlet:** To prevent electric shock, be sure the electrical plug used on the product power cord matches the electrical outlet used to supply power to the Aurora product. Use only the power adapter and power connection cables designed for this unit.
- **Power cord:** Be sure the power cord is routed so that it will not be stepped on or pinched by heavy items.
- **Lightning:** For protection from lightning or when the product is left unattended for a long period, disconnect it from the power source.



Also follow these precautions:

- **Ventilation:** Do not block the ventilation slots if applicable on the product or place any heavy object on top of it. Blocking the air flow could cause damage. Arrange components so that air can flow freely. Ensure that there is adequate ventilation if the product is placed in a stand or cabinet. Put the product in a properly ventilated area, away from direct sunlight or any source of heat.
- **Overheating:** Avoid stacking the Aurora product on top of a hot component such as a power amplifier.
- **Risk of Fire:** Do not place unit on top of any easily combustible material, such as carpet or fabric.
- **Proper Connections:** Be sure all cables and equipment are connected to the unit as described in this manual.
- **Object Entry:** To avoid electric shock, never stick anything in the slots on the case or remove the cover.
- **Water Exposure:** To reduce the risk of fire or electric shock, do not expose to rain or moisture.
- **Cleaning:** Do not use liquid or aerosol cleaners to clean this unit. Always unplug the power to the device before cleaning.
- **ESD:** Handle this unit with proper ESD care. Failure to do so can result in failure.

FCC

This device complies with Part 15 of the FCC Rules. Operation is subject to the following two conditions:

- (1) This device may not cause harmful interference.
- (2) This device must accept any interference received, including interference that may cause undesired operation.



Trademarks

All trademarks in this document are the properties of their respective owners.

FCC STATEMENT :

This device complies with Part 15 of the FCC Rules. Operation is subject to the following two conditions:

- (1) This device may not cause harmful interference, and
- (2) This device must accept any interference received, including interference that may cause undesired operation.

Warning: Changes or modifications not expressly approved by the party responsible for compliance could void the user's authority to operate the equipment.

NOTE: This equipment has been tested and found to comply with the limits for a Class B digital device, pursuant to Part 15 of the FCC Rules. These limits are designed to provide reasonable protection against harmful interference in a residential installation. This equipment generates uses and can radiate radio frequency energy and, if not installed and used in accordance with the instructions, may cause harmful interference to radio communications. However, there is no guarantee that interference will not occur in a particular installation. If this equipment does cause harmful interference to radio or television reception, which can be determined by turning the equipment off and on, the user is encouraged to try to correct the interference by one or more of the following measures:

- Reorient or relocate the receiving antenna.

- Increase the separation between the equipment and receiver.

- Connect the equipment into an outlet on a circuit different from that to which the receiver is connected.

- Consult the dealer or an experienced radio/TV technician for help.

FCC Radiation Exposure Statement:

This equipment complies with FCC radiation exposure limits set forth for an uncontrolled environment. This equipment should be installed and operated with minimum distance 20cm between the radiator & your body.

TABLE OF CONTENTS

Package Contents	6
Initial Setup	6
TS-100 Main Screen	7
Connecting to the TS-100	8
PC/Mac	8
Android/iOS	8
Network and Device Settings	9
Ethernet Page.....	9
IP address	9
Ethernet MAC address	9
Proxy & IP settings	9
Wireless Network Page	10
Wireless network configuration wizard	10
Show Device Name and Password When Mirroring	10
Auto Change Password	10
Disable Password Change Hint Dialog	10
WiFi Analyzer	10
Hide SSID, Password, & IP in Status Bar	10
General Settings Page	11
Auto Copy Software	11
Auto Standby.....	11
HDMI Output Resolution	11
Source Switch When Device Unplugged	11
HDMI Auto Switch	11
Security Settings Page	11
Security Level.....	11
LAN Discovery & Connection	11
Remote View Lock	11
Change Admin Password	11
Connection Password	11
Firmware Update	11

External Control	12
Controlling the TS-100 via LAN	12
Using the TS-100 To Control External Devices	12
Parameter	12
Control	12
HDMI CEC	12

Package Contents

Please make sure the following items are included within your package. Contact your dealer if any items are missing or damaged.

TeamStream

TS-100

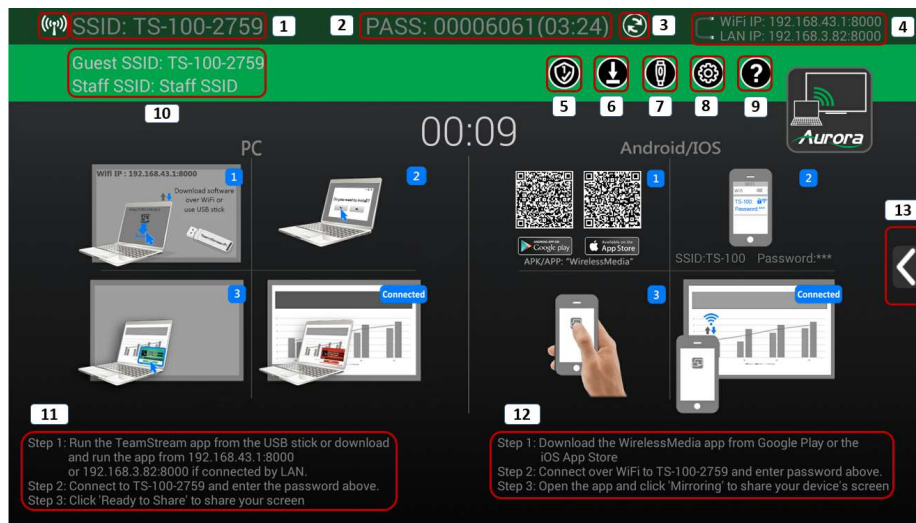
- 1 TS-100 Base Unit
- 1 TeamStream USB Disk
- 1 12v Power Supply
- 2 Wireless Antenna

Note: Go to www.auroramm.com for latest manual and firmware.

Initial Setup

1. Attach the two antennas to the rear of the TeamStream main unit. They are shipped unattached to prevent damage to the TS-100 or the antennas.
2. Connect your display to the TS-100's HDMI OUT port. If you are attaching external speakers, plug them into the LINE OUT port.
3. Connect an Ethernet cable from your router/switch/LAN port to the LAN port on the rear of the TS-100. If you are powering the device using PoE you do not need to connect a power supply.
4. Plug the 12V power supply into the rear of the TS-100 if you are not using PoE. The TS-100 should boot immediately once power is connected.

TS-100 Main Screen



ID	Name	Description
1	SSID	This is the ID of the TeamStream device.
2	PASS (Password)	This is the password to connect to the TS-100.
3	Refresh button	Changes the password of the TS-100.
4	WiFi IP / LAN IP	IP addresses to access the web interface of the TS-100.
5	Security Level	Displays current security level.
6	Download Button	Copies TeamStream software to a USB disk.
7	Wired source input	Switches to local input mode for inputs HDMI1-3 and VGA.
8	Setting	Opens the settings menu. Default password is 'admin'.
9	Help	Displays the TeamStream user manual.
10	Guest and Staff SSID	SSIDs for the Guest and Staff hotspots for wireless sharing.
11	PC connection steps	Instructions for connecting your PC/Mac to the TS-100
12	Mobile connection steps	Instructions for connecting your Android/iOS device to the TS-100
13	Arrow mark	Click to show currently connected devices

Connecting to the TS-100

PC/Mac

1. Insert the TeamStream USB stick to your PC/Mac. If you do not have a USB stick, you can download the app by accessing the web interface of the TS-100.
2. Run the TeamStream app and connect to the SSID of the TS-100 you wish to connect to.
3. When prompted, enter the connection password shown on the main screen.
4. Click "Ready To Share" to share your screen.

Android/iOS

1. Download the "WirelessMedia" app from the Google Play Store or the iOS App Store.
2. Connect to the WiFi access point of the TS-100. The SSID is the same as the device name.
3. Enter the password shown on the main screen
4. Open the app and click "Mirroring" to share your screen.

Network and Device Settings

To access the settings page, plug a wired mouse into one of the USB ports on the TS-100 and click the cog on the main screen. The default password is "admin".

Ethernet Page

IP address

The LAN IP address of the TS-100.

Ethernet MAC address

The MAC address of the LAN port.

Proxy & IP settings

Sets the Proxy and LAN IP Settings:

- Proxy – Set HTTP proxy settings.
- IP Setting – Select between DHCP and Static IP address settings.
- IP Address – LAN IP Address of the TS-100.
- Gateway – Default gateway address.
- Network Prefix Length – How many bits of the IP is the prefix. Default is 24 (255.255.255.0).
- DNS1/DNS2 – DNS server addresses.

Wireless Network Page

Wireless network configuration wizard

Sets up the wireless access point on the TS-100.

- Device Name – Host name of the device as well as the default SSID.
- Network Config – Sets the wireless mode of the TS-100.
 - Wireless Direct Mode – Default. Devices connect directly to the TS-100.
 - Wireless Infrastructure Mode – Uses two separate access points.
 - LAN Infrastructure Mode – Devices connect to your local LAN to connect to the TS-100.
- Set Up Wi-Fi access point – Sets the properties of the hotspot.
 - Frequency – Wireless band of the TS-100. 5GHz is recommended for better connection.
 - Channel – Wireless channel the hotspot transmits on. Best channel automatically selected.
 - Password – Sets the default WiFi password.
- Dual Network Config
 - Connected Dual Network – Hotspot and LAN connection are bridged.
 - Segmented Dual Network – Hotspot and LAN connection are separate.
- Guest and Staff SSID – Set the SSID for the guest and staff networks.

Show Device Name and Password When Mirroring

Always show the device name and password whenever a device is being shared.

Auto Change Password

Sets the lifetime of the connection password.

Disable Password Change Hint Dialog

Disables the on-screen password change notification.

WiFi Analyzer

Built-in tool to show SSIDs and channels of other wireless networks.

Hide SSID, Password, & IP in Status Bar

Hides the device information from the main wireless connection screen.

General Settings Page

Auto Copy Software

Automatically copies the TeamStream software whenever a USB disk is connected.

Auto Standby

Sets the time for the TS-100 to enter standby automatically.

HDMI Output Resolution

Sets the output display resolution. Supports 1080p60, 4k30, and 4k60.

Source Switch When Device Unplugged

Sets the default source to switch to when a wired device is unplugged.

HDMI Auto Switch

Enables automatically switching to a newly plugged wired source.

Security Settings Page

Security Level

Sets the base security level of the TS-100. Default is Level 1.

LAN Discovery & Connection

Enables the TS-100 to be discoverable for sharing via LAN.

Remote View Lock

Disables the ability to view the TS-100 screen from a connected mobile device.

Change Admin Password

Changes the password to access the settings menu.

Connection Password

Switches between a 4 and 8 digit connection password.

Firmware Update

To update the TS-100 firmware, copy the firmware image named 'ota.img' to the root of a USB drive. Insert it into the front USB port of the TS-100 and it will update automatically.

External Control

Controlling the TS-100 via LAN

The TS-100 supports control via Telnet at port 5656. The full protocol guide is available on our website at www.auroramultimedia.com.

Using the TS-100 To Control External Devices

The TS-100 supports controlling external devices by RS-232. There are also 2 normally open relay connections available, as well as 2 GPIO input channels. To configure external control, open the settings page and go to the "External Control Setup" page.

Parameter

This pane sets the parameters for the RS-232 port. The default settings are 115200 baud 8N1.

Control

This pane allows you to set RS-232 commands and relay states for the built-in triggers of the TS-100:

System Sleep	GPIO 1 Active	GPIO 1 or 2 Active
System Wake Up	GPIO 2 Active	GPIO 1 and 2 Inactive
Input Sense	GPIO 1 Inactive	
Input Switch	GPIO 2 Inactive	

To send an RS-232 command, enter it into the "Serial Command" field and check the checkbox next to it to enable sending the command. To enter any non-printable hex characters, preface the hex byte with "%". For example, to send Carriage Return, <cr> or 0x0D, enter %0D.

To set relay states, click the drop down to select the desired state. The available options are "Close", "Open", and "Not Set".

HDMI CEC

This pane allows you to enable HDMI CEC to automatically sleep or wakeup the connected display when the TS-100 sleeps or wakes up.



Aurora Multimedia Corp.

205 Commercial Court | Morganville, NJ 07751

Phone: 732-591-5800 | Fax: 732-591-6801