


Antenna Specification

Antenna picture	
Antenna Type	Metal monopole antenna
Antenna Peak Gain	-2.31 dBi
Operating Band	2400 MHz ~ 2483.5 MHz
Test laboratory name and Address	IoT Antenna Test Laboratory, 3 / A, LEEDARSON LIGHTING CO., LTD. Xingtai Industrial Park, Changtai Economic Development Zone, Zhangzhou, 363900, China
Antenna Manufacturer	LEEDARSON LIGHTING CO., LTD.
Model name	G25 灯丝灯
DUT photo	
Test Equipment & Calibration Date	SY-16 OTA System 2023-02-06
Test Engineer	Ouyanglongji
Test Date	2023-03-20

Test System

The SY-16 OTA system is an anechoic chamber, which can measure antenna passive data such as antenna efficiency, antenna gain, and 2D&3D pattern. The coordinates and topology are shown as follows:

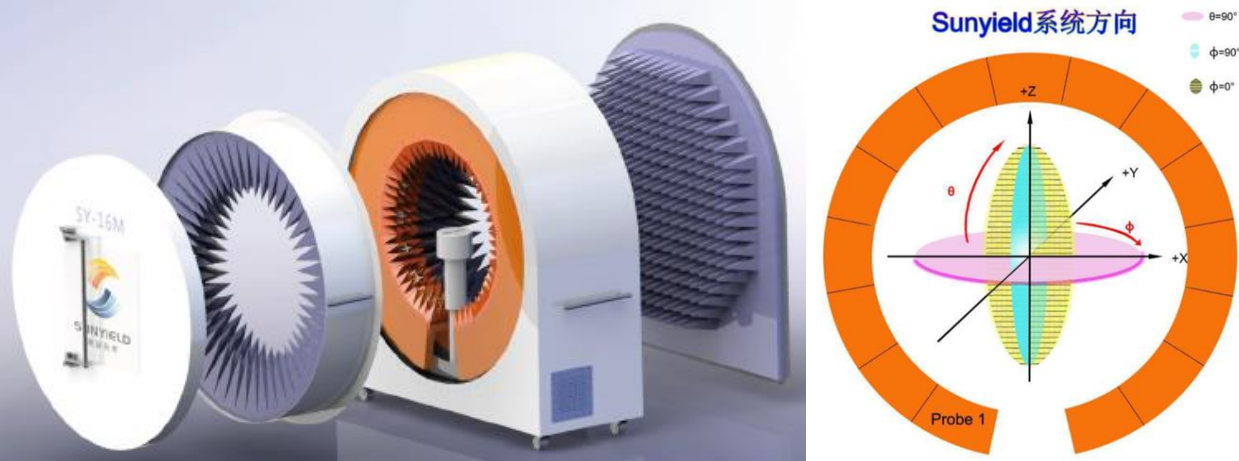


Figure 1 SY-16 OTA system

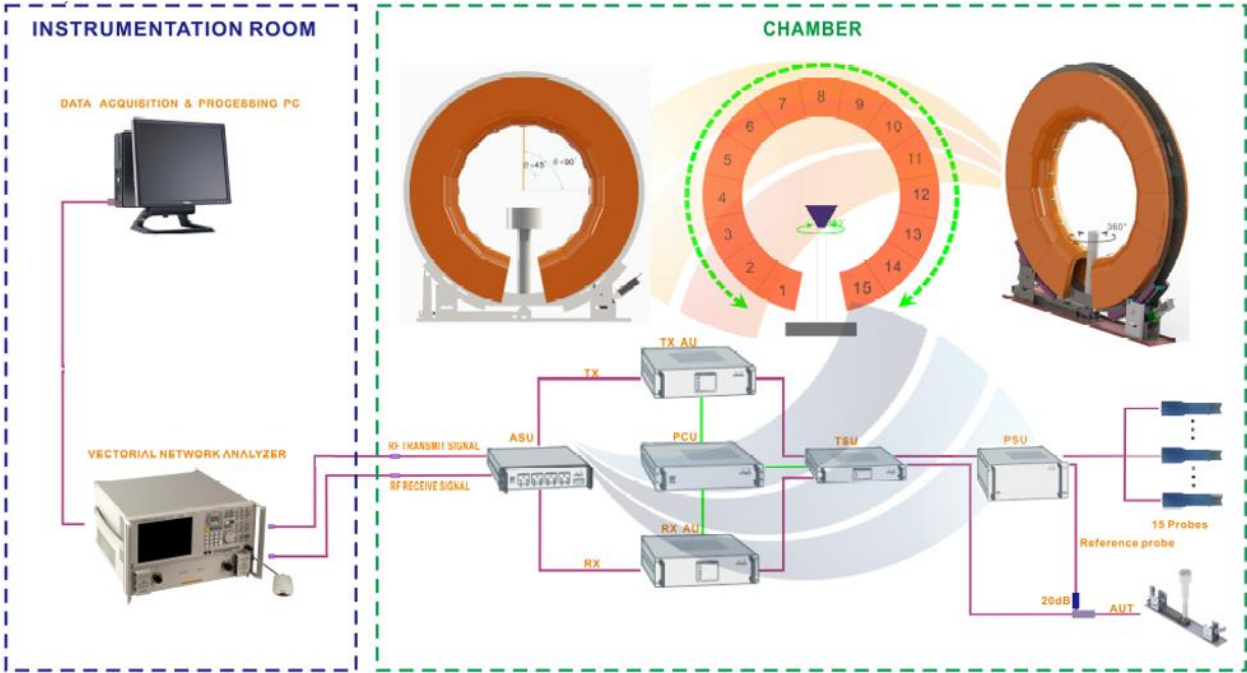


Figure 2 OTA measurement topology

Test Result

Efficiency and Gain

Table 1 Antenna Efficiency and Gain

Frequency (MHz)	Gain (dBi)	Efficiency (dB)	Efficiency (%)
2400	-3.00	-7.48	17.85
2410	-2.98	-7.54	17.62
2420	-2.51	-7.13	19.37
2430	-2.59	-7.21	18.99
2440	-2.82	-7.35	18.4
2450	-2.63	-7.23	18.94
2460	-2.31	-6.81	20.85
2470	-2.39	-6.68	21.47
2480	-2.75	-6.94	20.23
2490	-2.75	-6.85	20.67
2500	-2.28	-6.33	23.27

Radiation Pattern

Table 2 Product coordinates

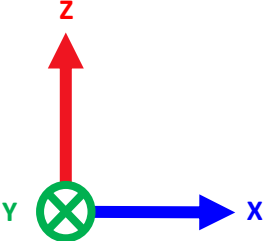
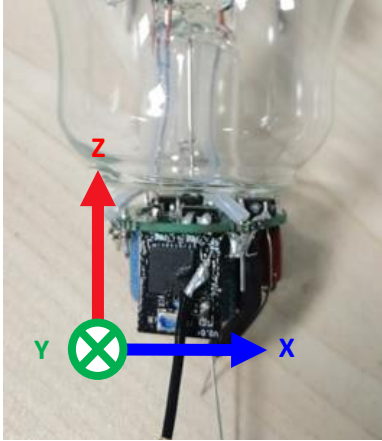
Product Coordinates	
	

Table 3 3D radiation pattern

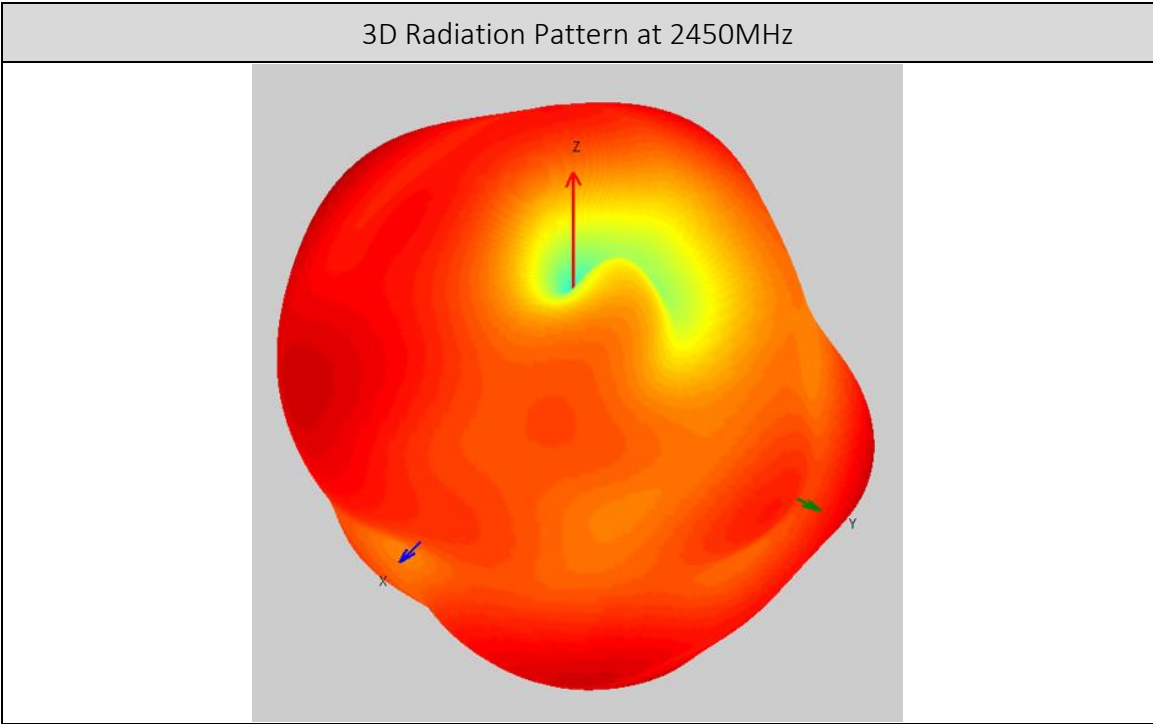


Table 4 Radiation pattern in XY Plane

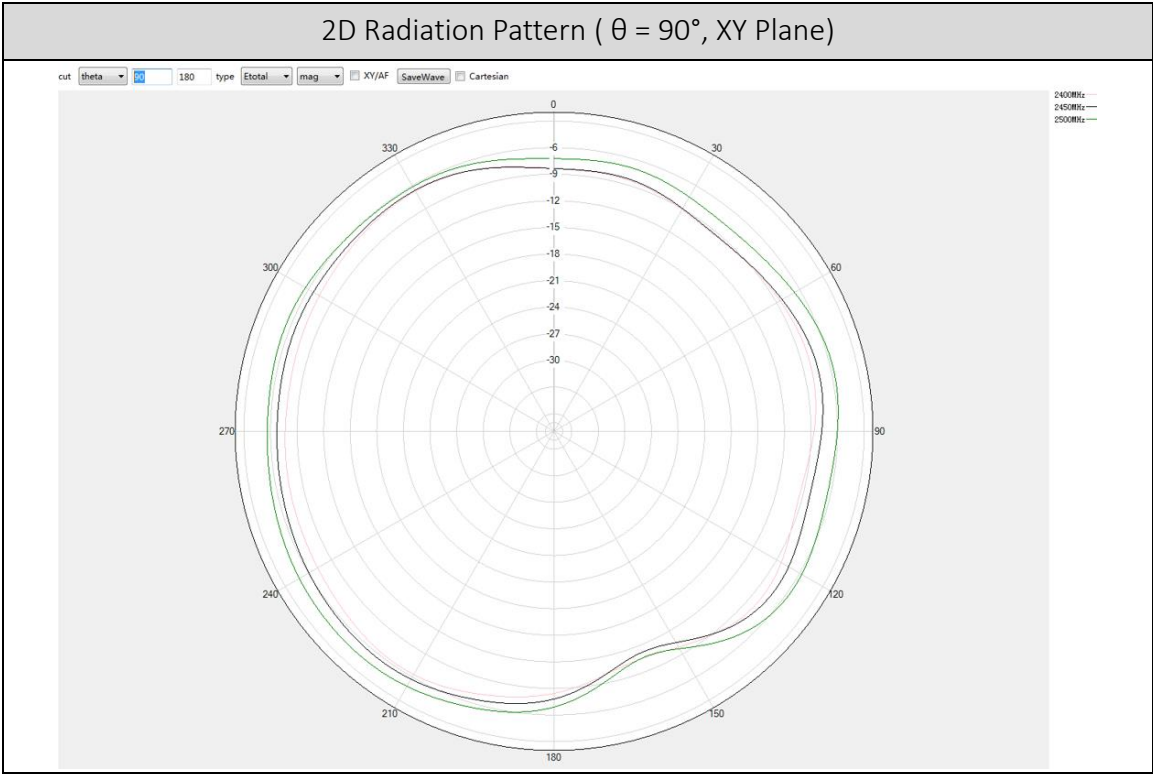


Table 5 Radiation pattern in XZ Plane

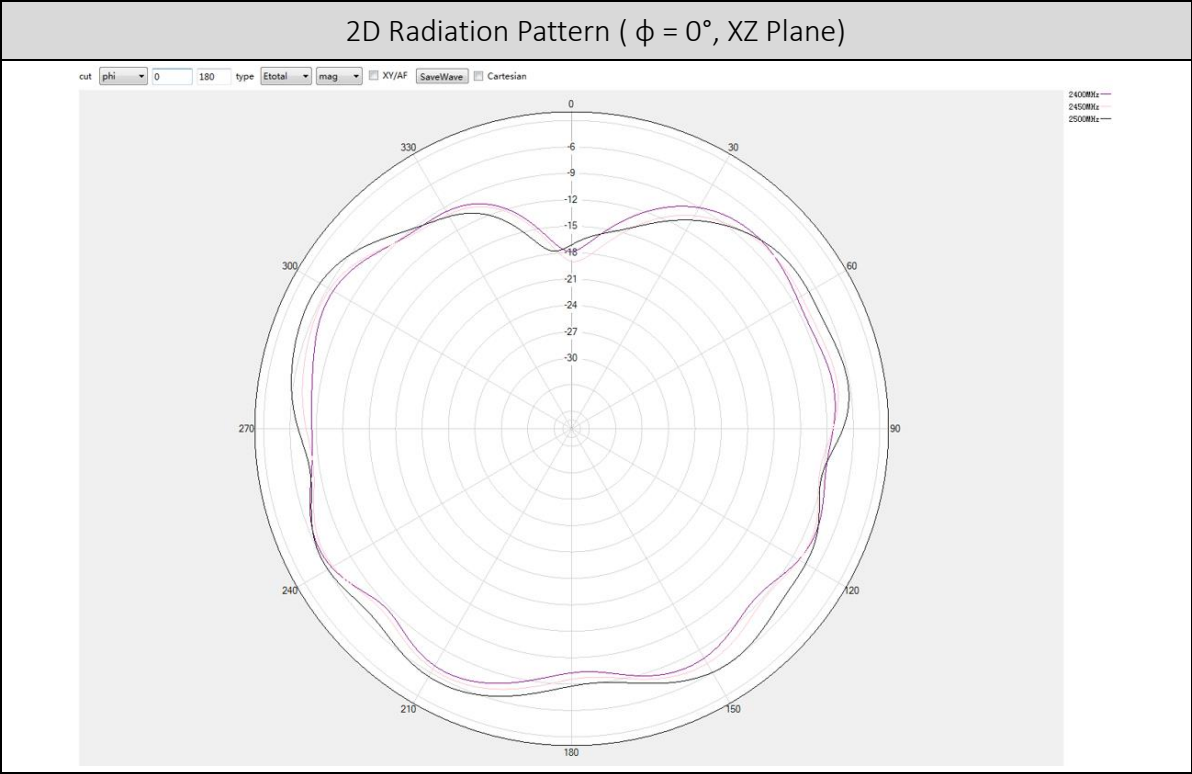


Table 6 Radiation pattern in YZ Plane

