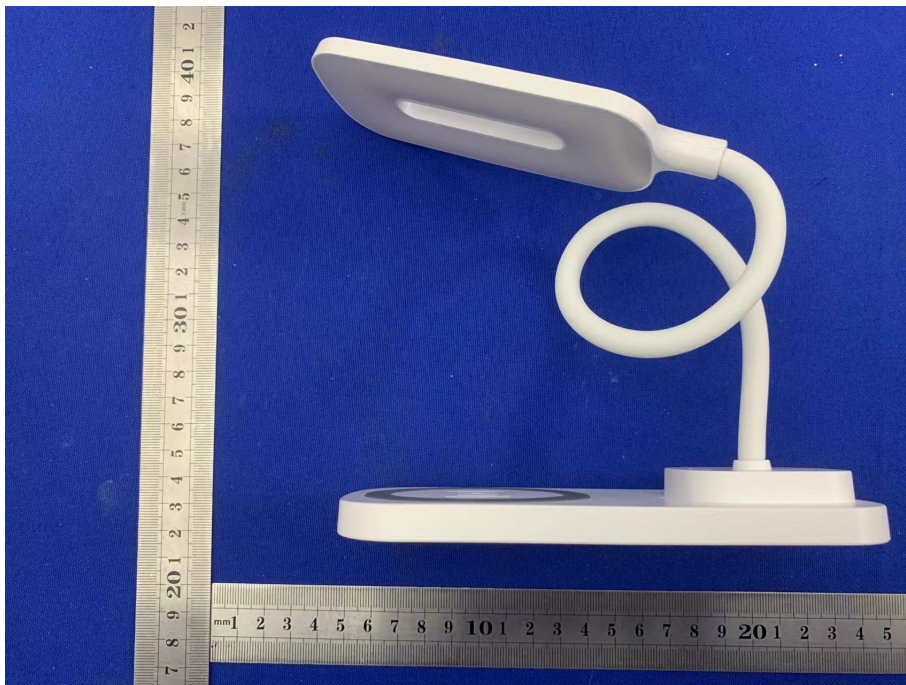
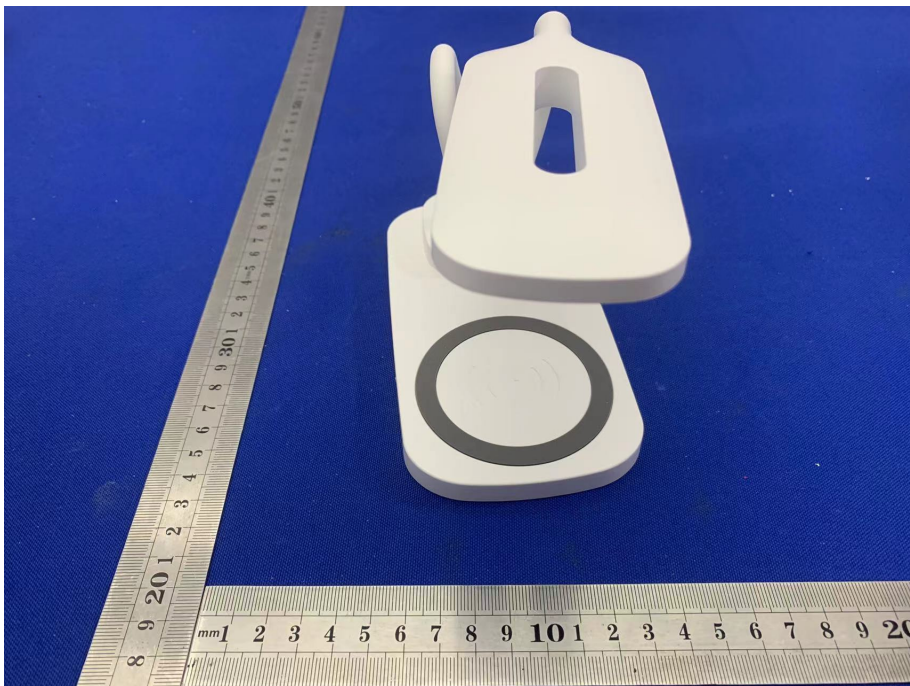
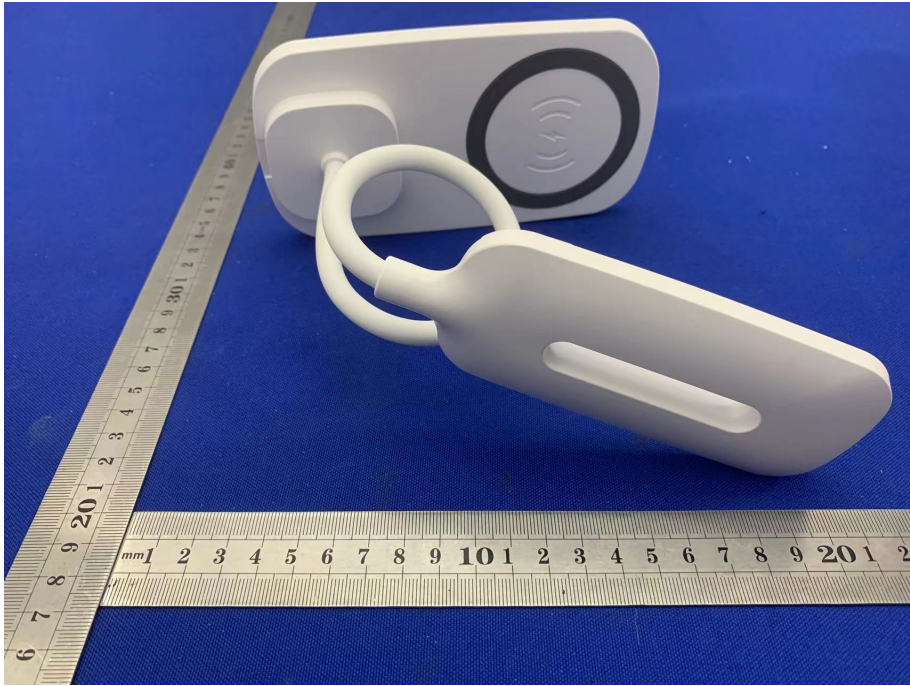
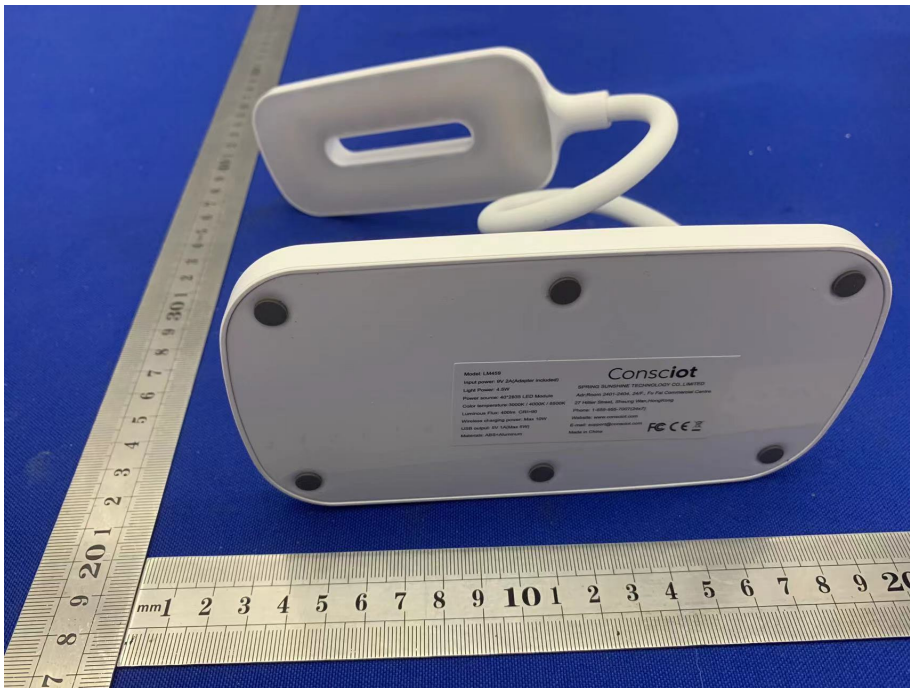


# External Photos









Model: L1452D  
Input Power: 10 W (24V/400mA Instant)  
Light Power: 4.5W  
Power Source: AC 220V, LED Module  
Color Temperature: 6000K - 4000K / 4000K  
Lifespan: 50,000 Hours (Typical)  
Voltage of Supply: 220V AC  
LED Module: 60° Viewing Angle  
Material: ABS+PC+Aluminum  
©2014 Consciot Technology Co., Ltd.  
All Rights Reserved. Patent Pending.  
Product: LED Light Module  
Company: Consciot Technology Co., Ltd.  
Website: www.consciot.com  
Made in China

**Consciot**  
FC CE