

1. Have you considered each of the items discussed in the recent TCB Workshop, April, 2022, titled "UWB15F PAG Checklist"? In particular, slide 10 for this DUT. In case not available yet, the document is attached with this response.

Technical Requirements

-Restricted to indoor operation by nature of design and manual notice (15.517(a)(1))

1/3 Reply: EUT 用于仓库货物定位使用，不用于室外，符合 15.517(a)(1)要求。

EUT is used for warehouse cargo positioning, not for outdoor use, and meets the requirements of 15.517(a)(1).

-Shall not be intentionally directed to perform outside functions, such as entry detection (15.517(a)(2))

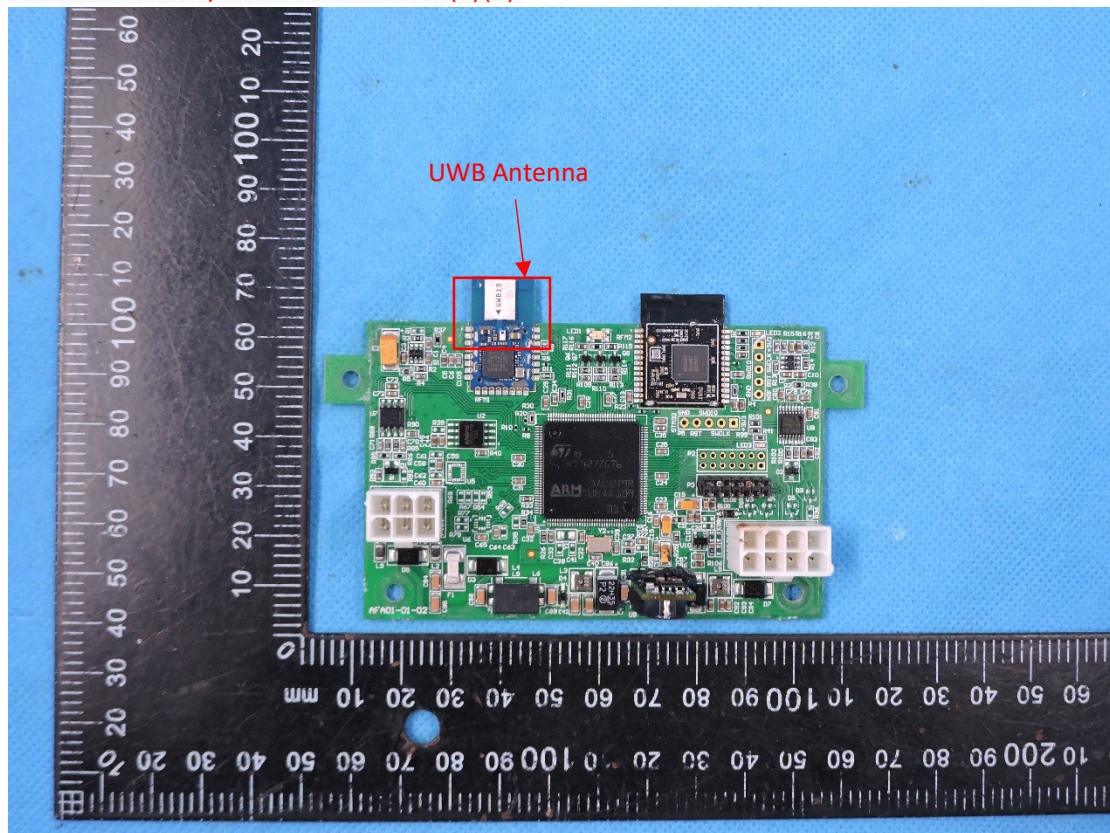
1/3 Reply: EUT 用于仓库货物定位使用，不用于室外，符合 15.517(a)(2)要求。

EUT is used for warehouse cargo positioning, not for outdoor use, and meets the requirements of 15.517(a)(2).

-The use of fixed outdoor mounted antennas is prohibited (15.517(a)(3))

1/3 Reply: EUT 使用内部 **Ceramic** 天线，无法改变使用外部天线，符合 15.517(a)(3)要求。

The EUT uses an internal Ceramic antenna and cannot be changed to use an external antenna, in compliance with 15.517(a)(3).



-Metal or underground storage tanks are considered indoors per (15.517(a)(4))

Also applies to devices constrained to usage in underground mines (via KDB inquiry response)

1/3 Reply: EUT 安装在非金属支架或者非金属墙面，符合 15.517(a)(4)要求。

The EUT is mounted on a non-metallic bracket or a non-metallic wall, in compliance with the requirements of 15.517(a)(4).

-Shall transmit only when sending information to an associated receiver (15.517(a)(5))

1/3 Reply: EUT 遇到对应的移动接收器时，才能一对一进行信息传输，符合 15.517(a)(5) 要求。

The EUT can only transmit information one-to-one when it encounters the corresponding mobile receiver, which meets the requirements of 15.517(a)(5).

-The UWB bandwidth shall be contained between 3.1 GHz and 10.6 GHz (15.517(b))

1/3 Reply: EUT 工作频率是 6.4896GHz，符合 15.517(b)要求。

The EUT operating frequency is 6.4896GHz, which complies with 15.517(b).

-Radiated emissions above 960 MHz shall conform to the mask specified in 15.517(c)

1/3 Reply: STS2310306W04 报告第 21 页测试项结果已经符合 15.517(c)要求。

The results of the test items on page 21 of the STS2310306W04 report have met the requirements of 15.517(c).

-Peak EIRP limit of 0 dBm/50 MHz applies (15.517(e))

1/3 Reply: STS2310306W04 报告第 37 页测试项结果已经符合 15.517(e)要求。

The results of the test items on page 37 of the STS2310306W04 report have met the requirements of 15.517(e).

-Radiated emissions in the 1164-1240 MHz & 1559-1610 MHz bands limits as specified in 15.517(d)

1/3 Reply: STS2310306W04 报告第 45 页测试项结果已经符合 15.517(d)要求。

The results of the test items on page 45 of the STS2310306W04 report have met the requirements of 15.517(d).

-Must bear a statement in a conspicuous location on the device or in the instruction manual:

"This equipment may only be operated indoors. Operation outdoors is in violation of 47 U.S.C. 301 and could subject the operator to serious legal penalties."

1/3 Reply:说明书 2 页有增加警示语，附件 Label 也增加 FCC 警示语。

The 2th page of the user manual has added warnings, and the appendix Label has also added FCC warnings.

Endurance Anchor belongs to FCC Part 15.517 indoor UWB systems.

"This equipment may only be operated indoors. Operation outdoors is in violation of 47 U.S.C. 301 and could subject the operator to serious legal penalties."

2. In the future, please describe what kind of UWB 15F the DUT is, such as, Indoor 15.217.

1/3 Reply: STS2310306W04报告第7页和说明书第2页有增加Indoor Anchor is a FCC Part 15.517 indoor UWB systems.

Indoor Anchor is a FCC Part 15.517 indoor UWB systems.