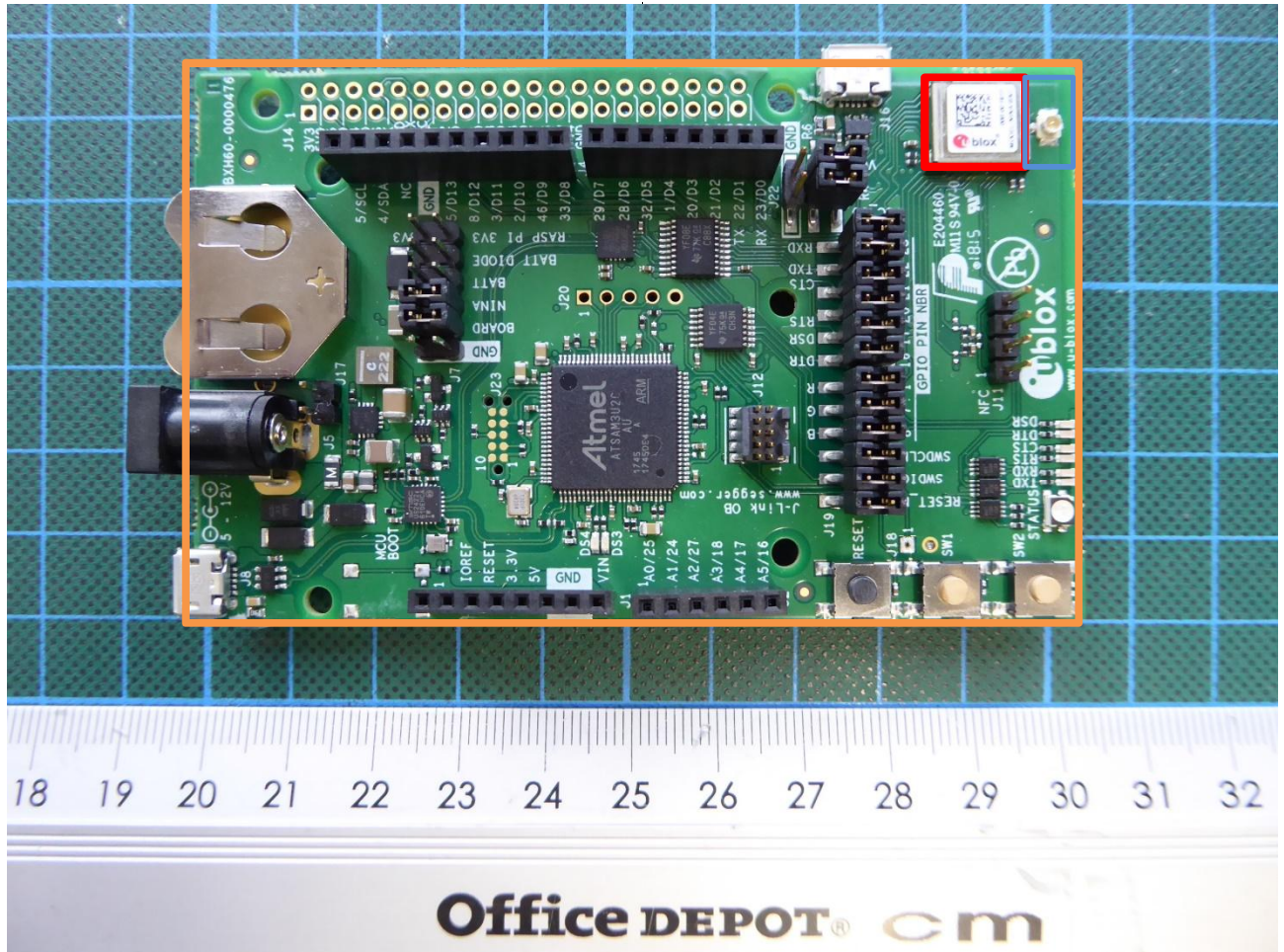


Annex B: External Photos



181014E7_EUT01:

EUT PT4-B301#3 with trace design on not marketed eval board
– top view

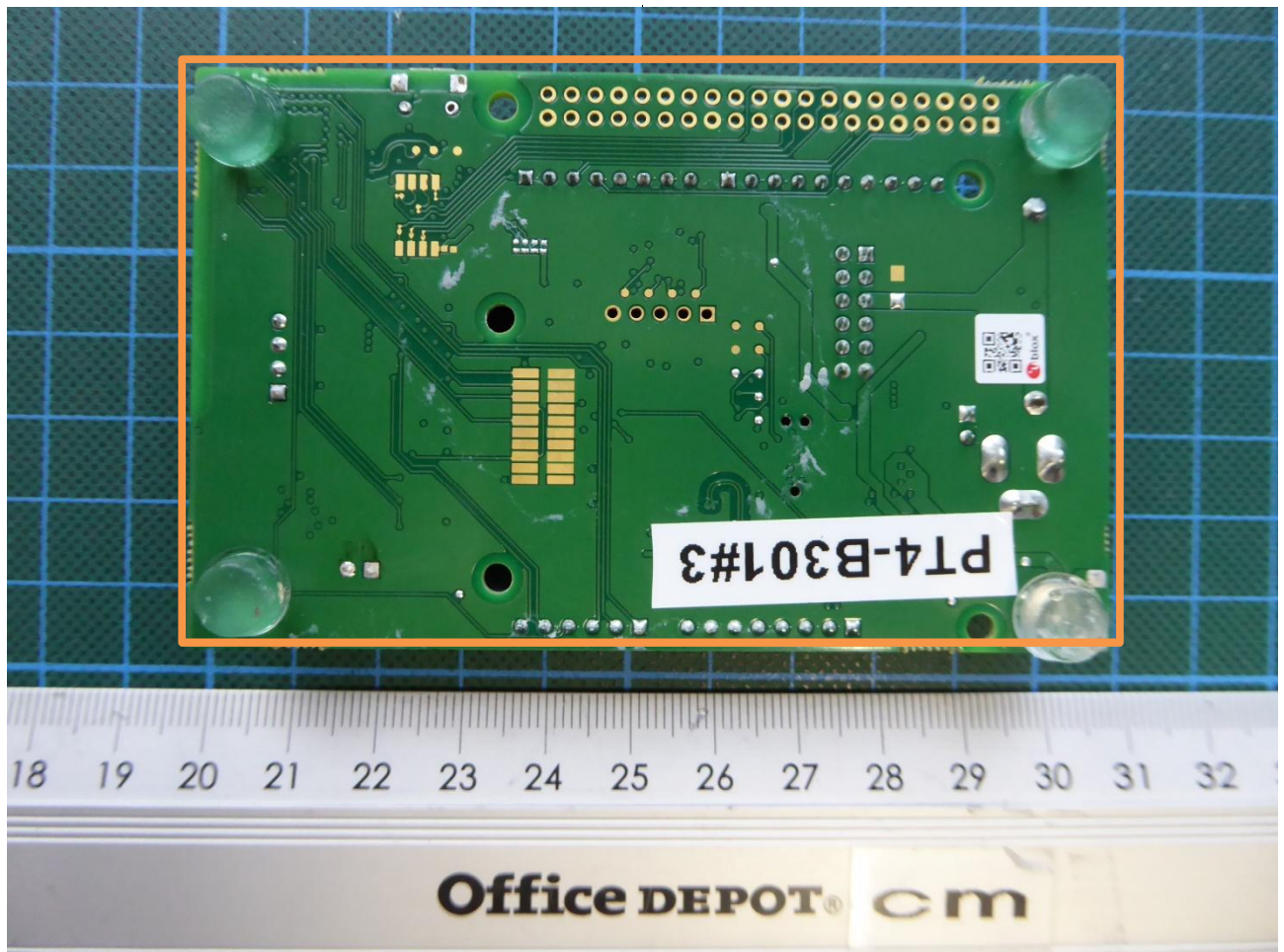
Annex B: External Photos



181014E7_EUT02:

EUT PT4-B301#3 with trace design on not marketed eval board
– detail view

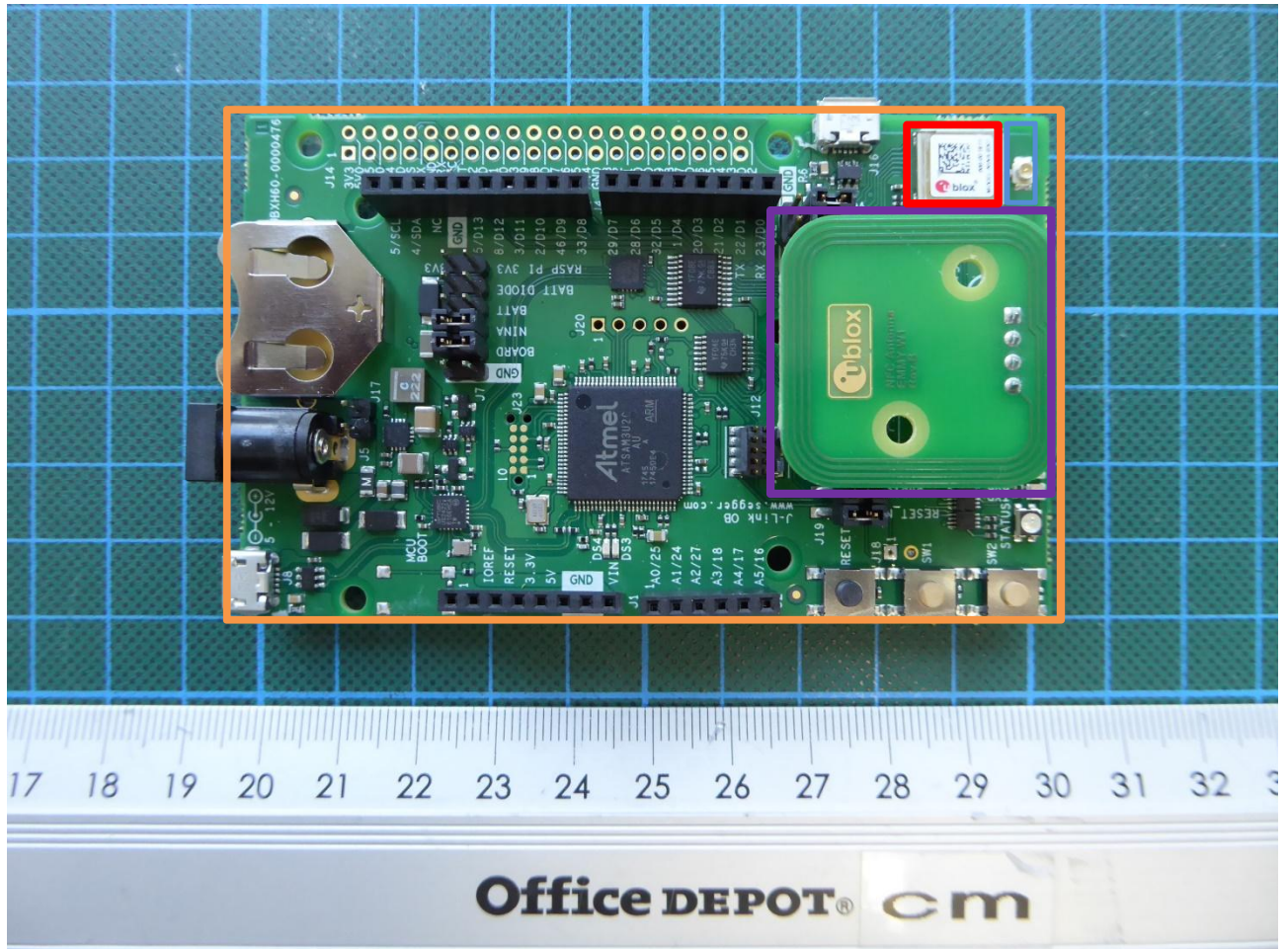
Annex B: External Photos



181014E7_EUT03:

EUT PT4-B301#3 with trace design on **not marketed eval board**
– bottom view

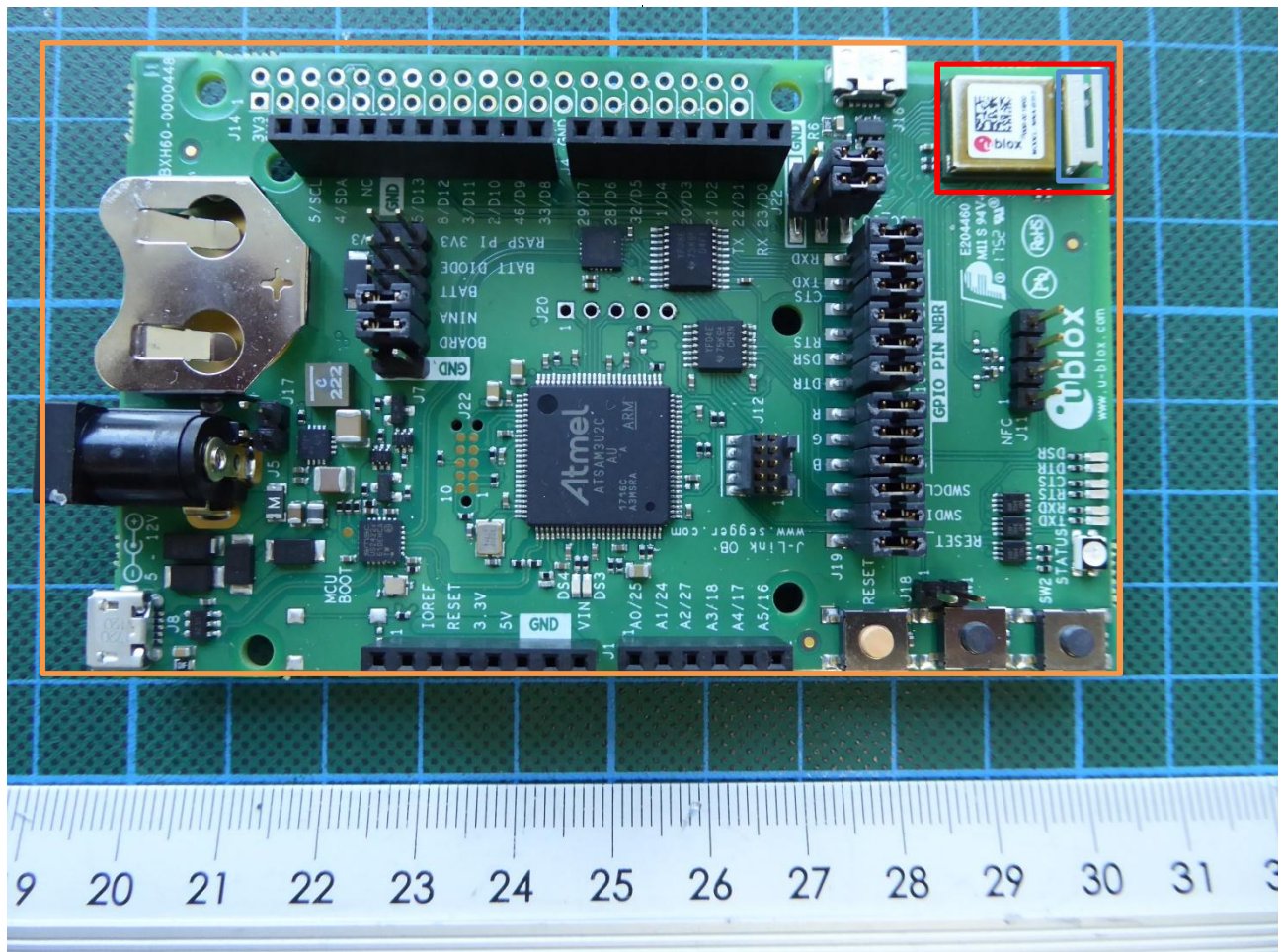
Annex B: External Photos



181014E7_EUT04:

EUT PT4-B301#3 with trace design on not marketed eval board
– top view with installed NFC antenna

Annex B: External Photos



181014E7_EUT05:

EUT PT2-B312#8 with internal antenna on not marketed eval board
– top view

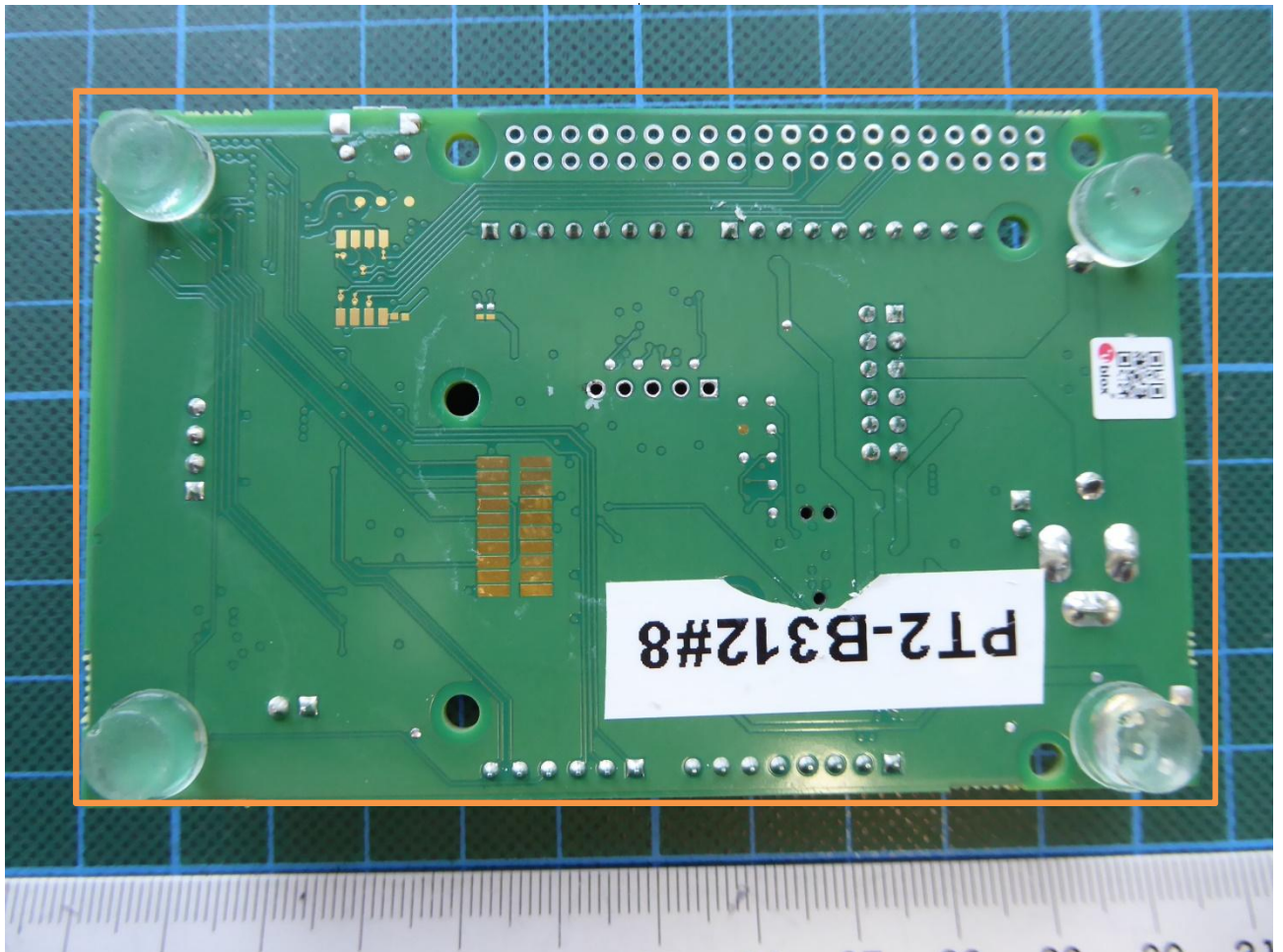
Annex B: External Photos



181014E7_EUT06:

EUT PT2-B312#8 with internal antenna on not marketed eval board
– detail view

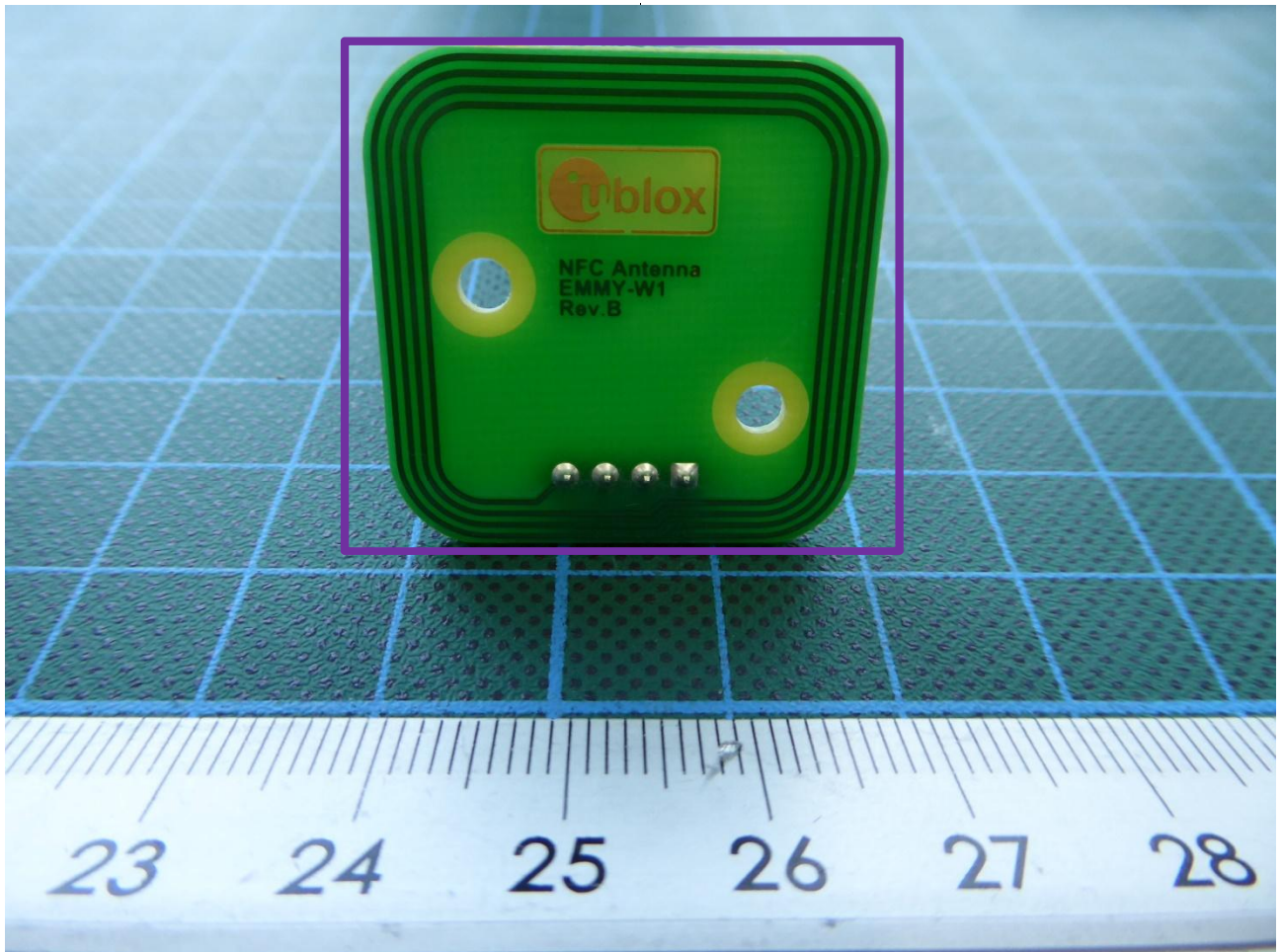
Annex B: External Photos



181014E7_EUT07:

EUT PT2-B312#8 with internal antenna on **not marketed eval board**
– bottom view

Annex B: External Photos



181014E7_EUT08:

NFC antenna

Annex B: External Photos



NINA-B3 Internal photos^{*1}:

NINA-B312 and NINA-B301
EUT top, side and bottom view, with shielding

^{*1} photos provided by the applicant