



FCC SAR TEST REPORT

Report No.: STS2006150H01

Issued for

Excellus Communications, LLC

27298 Wetland Road, Suite 101 Harrisburg, SD 57032 USA

Product Name:	4G phone
Brand Name:	Snapfon
Model Name:	ezFlip
Series Model:	N/A
FCC ID:	2AW56-EZFLIP
Test Standard:	ANSI/IEEE Std. C95.1
	FCC 47 CFR Part 2 (2.1093)
	IEEE 1528: 2013
Max. Report SAR (1g):	Head: 0.678 W/kg
	Body: 1.526 W/kg

Any reproduction of this document must be done in full. No single part of this document may be reproduced without permission from STS, All Test Data Presented in this report is only applicable to presented Test sample.

ShenZhen STS Test Services Co.,Ltd.

A 1/F, Building B, Zhuoke Science Park, No.190 Chongqing Road, HepingShequ, Fuyong Sub-District, Bao'an District, Shenzhen, Guang Dong, China

TEL: +86-755 3688 6288 FAX: +86-755 3688 6277 E-mail:sts@stsapp.com





Test Report Certification

Applicant's name : Excellus Communications, LLC
 Address : 27298 Wetland Road, Suite 101 Harrisburg, SD 57032 USA
Manufacture's Name : Ying Tai Electronics Co., Ltd
 Address : ROOM 803, CHEVALIER HOUSE 45-51 CHATHAM ROAD SOUTH, TSIM SHA TSUI, KOWLOON, HONG KONG

Product description

Product name : 4G phone
 Brand name : Snapfon
 Model name : ezFlip
 Series Model..... : N/A

Standards..... : ANSI/IEEE Std. C95.1-1992
 FCC 47 CFR Part 2 (2.1093)
 IEEE 1528: 2013

The device was tested by Shenzhen STS Test Services Co., Ltd. in accordance with the measurement methods and procedures specified in KDB 865664 The test results in this report apply only to the tested sample of the stated device/equipment. Other similar device/equipment will not necessarily produce the same results due to production tolerance and measurement uncertainties.

Date of Test :
 Date (s) of performance of tests..... : 02 June 2020~08 June 2020
 Date of Issue..... : 09 June 2020
 Test Result..... : **Pass**

Testing Engineer : Aaron Bu.
 (Aaron Bu)

Technical Manager : Jason Lu
 (Jason Lu)

Authorized Signatory : Vita Li
 (Vita Li)





Table of Contents

1. General Information	5
1.1 EUT Description	5
1.2 Test Environment	7
1.3 Test Factory	7
2. Test Standards and Limits	8
3. SAR Measurement System	9
3.1 Definition of Specific Absorption Rate (SAR)	9
3.2 SAR System	9
4. Tissue Simulating Liquids	12
4.1 Simulating Liquids Parameter Check	12
5. SAR System Validation	14
5.1 Validation System	14
5.2 Validation Result	14
6. SAR Evaluation Procedures	15
7. EUT Antenna Location Sketch	16
7.1 SAR test exclusion consider table	17
8. EUT Test Position	18
8.1 Define Two Imaginary Lines on the Handset	18
8.2 Hotspot mode exposure position condition	19
9. Uncertainty	20
9.1 Measurement Uncertainty	20
9.2 System validation Uncertainty	21
10. Conducted Power Measurement	22
10.1 Test Result	22
10.2 Tune-up Power	35
10.3 SAR Test Exclusions Applied	38
11. EUT and Test Setup Photo	39
11.1 EUT Photo	39
11.2 Setup Photo	42
12. SAR Result Summary	48
12.1 Head SAR	48
12.2 Body-worn and Hotspot SAR	51
12.3 repeated SAR measurement	55
13. Equipment List	58
Appendix A. System Validation Plots	59
Appendix B. SAR Test Plots	69
Appendix C. Probe Calibration and Dipole Calibration Report	89



Revision History

Rev.	Issue Date	Report No.	Effect Page	Contents
00	09 June 2020	STS2006150H01	ALL	Initial Issue

Note: **Format version** of the report -V01





1. General Information

Environmental evaluation measurements of specific absorption rate (SAR) distributions in emulated human head and body tissues exposed to radio frequency (RF) radiation from wireless portable devices for compliance with the rules and regulations of the U.S. Federal Communications Commission (FCC).

1.1 EUT Description

Product Name	4G phone			
Brand Name	Snapfon			
Model Name	ezFlip			
Series Model	N/A			
FCC ID	2AW56-EZFLIP			
Model Difference	N/A			
Battery	Rated Voltage: 3.7V Charge Limit: 4.2V Capacity: 1500mAh			
Device Category	Portable			
Product stage	Production unit			
RF Exposure Environment	General Population / Uncontrolled			
IMEI	358293083026939			
Hardware Version	P31-MB-V1.2			
Software Version	Snapfon_ezFlip_V8.0_20200511_1605			
Frequency Range	GSM 850: 824.2~848.8MHz PCS1900: 1850.2~1909.8MHz WCDMA Band II: 1852.4~1907.6MHz WCDMA Band IV: 1712.4~1752.6 MHz WCDMA Band V: 826.4~846.6MHz LTE Band 2: 1850.7~1909.3MHz LTE Band 4: 1710.7~1754.3MHz		LTE Band 5: 824.7~848.3MHz LTE Band 12: 699.7~715.3MHz LTE Band 66: 1710.7~1779.3MHz WLAN802.11b/g/n(HT20): 2412~2462MHz WLAN 802.11n(HT40): 2422~2452MHz Bluetooth: 2402~ 2480MHz	
Max. Reported SAR(1g): (Limit:1.6W/kg)	Band	Mode	Head (W/kg)	Body Worn and Hotspot(W/kg)
	PCE	GSM 850	0.210	0.732
	PCE	GSM 1900	0.209	0.440
	PCE	WCDMA Band II	0.303	0.807
	PCE	WCDMA Band IV	0.678	1.526
	PCE	WCDMA Band V	0.138	0.578
	PCE	LTE Band 2	0.560	0.980
	PCE	LTE Band 5	0.137	0.751
	PCE	LTE Band 12	0.026	0.174
	PCE	LTE Band 66	0.441	1.370
	DTS	WLAN	0.114	0.025
	DSS	Bluetooth ^{Note}	0.053	0.026
1-g Sum SAR			0.792	1.552
FCC Equipment Class	Licensed Portable Transmitter Held to Ear (PCE) Part 15 Spread Spectrum Transmitter (DSS) Digital Transmission System (DTS)			



Operating Mode:	GSM: GSM Voice; GPRS Class 12 WCDMA: RMC, HSDPA, HSUPA Release 6 LTE: QPSK, 16QAM WLAN: 802.11 b/g/n(HT20) /n(HT40) Bluetooth: 4.2+EDR (GFSK + π /4DQPSK+8DPSK) BLE
Antenna Specification:	GSM, WCDMA, LTE: PIFA Antenna BT, WLAN: PIFA Antenna
SIM Card	Support dual-SIM, dual standby, the multiple SIM card with two lines cannot transmitting at the same time
Hotspot Mode	Support
DTM Mode	Not Support
Note:	<ol style="list-style-type: none">1. Bluetooth SAR was estimated2. The dual SIM card mobile has 2 SIM slots and supports dual SIM dual standby. The WWAN radio transmission will be enabled by either one SIM at a time (Single active)3. After pre-scan two SIM cards power, we found test result of the SIM1 was the worse, so we chose SIM1 card to perform all tests.4. The EUT battery must be fully charged and checked periodically during the test to ascertain uniform power5. LTE Band 4 falls completely within the working range of Band 66, no separate test required.



1.2 Test Environment

Ambient conditions in the SAR laboratory:

Items	Required
Temperature (°C)	18-25
Humidity (%RH)	30-70

1.3 Test Factory

ShenZhen STS Test Services Co.,Ltd.

A 1/F, Building B, Zhuoke Science Park, No.190 Chongqing Road, HepingShequ, Fuyong Sub-District, Bao'an District, Shenzhen, Guang Dong, China

FCC test Firm Registration No.: 625569

IC Registration No.: 12108A

A2LA Certificate No.: 4338.01





2. Test Standards and Limits

No.	Identity	Document Title
1	47 CFR Part 2	Frequency Allocations and Radio Treaty Matters; General Rules and Regulations
2	ANSI/IEEE Std. C95.1-1992	IEEE Standard for Safety Levels with Respect to Human Exposure to Radio Frequency Electromagnetic Fields, 3 kHz to 300 GHz
3	IEEE Std. 1528-2013	Recommended Practice for Determining the Peak Spatial-Average Specific Absorption Rate (SAR) in the Human Head from Wireless Communications Devices: Measurement Techniques
4	FCC KDB 447498 D01 v06	Mobile and Portable Device RF Exposure Procedures and Equipment Authorization Policies
5	FCC KDB 865664 D01 v01r04	SAR Measurement 100 MHz to 6 GHz
6	FCC KDB 865664 D02 v01r02	RF Exposure Reporting
7	FCC KDB 941225 D01 v03r01	SAR Measurement Procedures for 3G Devices
8	FCC KDB 941225 D05 v02r05	SAR for LTE Devices
9	FCC KDB 941225 D06 v02r01	Hotspot Mode SAR
10	FCC KDB 648474 D04 v01r03	SAR Evaluation Considerations for Wireless Handsets
11	FCC KDB 248227 D01 Wi-Fi SAR v02r02	SAR Considerations for 802.11 Devices

(A). Limits for Occupational/Controlled Exposure (W/kg)

Whole-Body	Partial-Body	Hands, Wrists, Feet and Ankles
0.4	8.0	20.0

(B). Limits for General Population/Uncontrolled Exposure (W/kg)

Whole-Body	Partial-Body	Hands, Wrists, Feet and Ankles
0.08	1.6	4.0

NOTE: Whole-Body SAR is averaged over the entire body, partial-body SAR is averaged over any 1 gram of tissue defined as a tissue volume in the shape of a cube. SAR for hands, wrists, feet and ankles is averaged over any 10 grams of tissue defined as a tissue volume in the shape of a cube.

Population/Uncontrolled Environments:

Are defined as locations where there is the exposure of individuals who have no knowledge or control of their exposure.

Occupational/Controlled Environments:

Are defined as locations where there is exposure that may be incurred by people who are aware of the potential for exposure, (i.e. as a result of employment or occupation).

NOTE

GENERAL POPULATION/UNCONTROLLED EXPOSURE

PARTIAL BODY LIMIT

1.6 W/kg

3. SAR Measurement System

3.1 Definition of Specific Absorption Rate (SAR)

SAR is related to the rate at which energy is absorbed per unit mass in an object exposed to a radio field. The SAR distribution in a biological body is complicated and is usually carried out by experimental techniques or numerical modeling. The standard recommends limits for two tiers of groups, occupational/controlled and general population/uncontrolled, based on a person's awareness and ability to exercise control over his or her exposure. In general, occupational/controlled exposure limits are higher than the limits for general population/uncontrolled.

The SAR definition is the time derivative (rate) of the incremental energy (dW) absorbed by (dissipated in) an incremental mass (dm) contained in a volume element (dv) of a given density (ρ). The equation description is as below:

$$SAR = \frac{d}{dt} \left(\frac{dW}{dm} \right) = \frac{d}{dt} \left(\frac{dW}{\rho dv} \right)$$

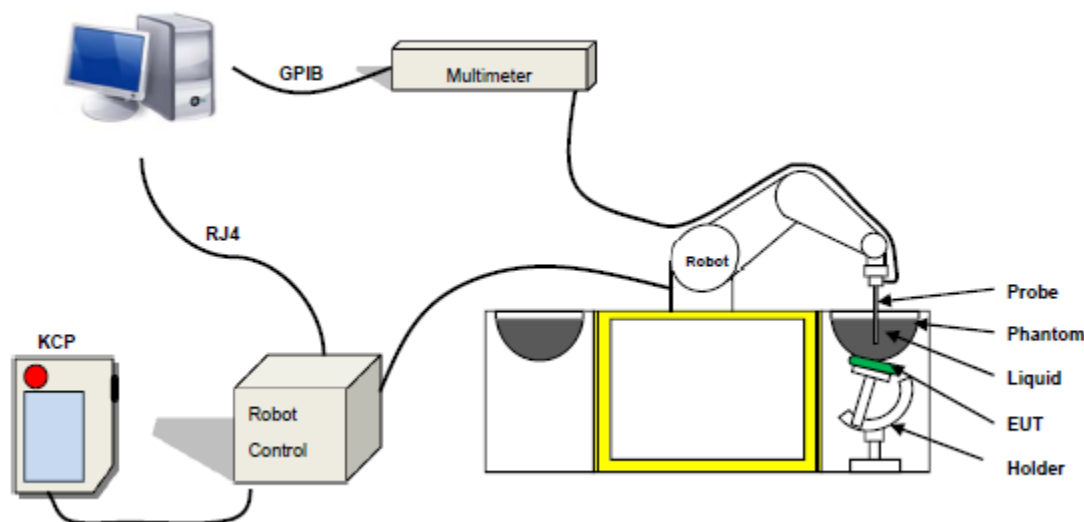
SAR is expressed in units of Watts per kilogram (W/kg) SAR measurement can be related to the electrical field in the tissue by

$$SAR = \frac{\sigma E^2}{\rho}$$

Where: σ is the conductivity of the tissue,
ρ is the mass density of the tissue and E is the RMS electrical field strength.

3.2 SAR System

MVG SAR System Diagram:



COMOSAR is a system that is able to determine the SAR distribution inside a phantom of human being according to different standards. The COMOSAR system consists of the following items:

- Main computer to control all the system
- 6 axis robot
- Data acquisition system
- Miniature E-field probe
- Phone holder
- Head simulating tissue

The following figure shows the system.



The EUT under test operating at the maximum power level is placed in the phone holder, under the phantom, which is filled with head simulating liquid. The E-Field probe measures the electric field inside the phantom. The Open SAR software computes the results to give a SAR value in a 1g or 10g mass.

3.2.1 Probe

For the measurements the Specific Dosimetric E-Field Probe SN 14/16 EP309 with following specifications is used

- Dynamic range: 0.01-100 W/kg
- Tip Diameter: 5 mm
- Length of Individual Dipoles: 4.5 mm
- Maximum external diameter: 8 mm
- Distance between dipole/probe extremity: 8 mm (repeatability better than +/- 2.7mm)
- Probe linearity: $0 \pm 2.27\%$ ($\pm 0.10\text{dB}$)
- Axial Isotropy: $< 0.10\text{ dB}$
- Spherical Isotropy: $< 0.10\text{ dB}$
- Calibration range: 400 MHz to 3 GHz for head & body simulating liquid.
- Angle between probe axis (evaluation axis) and surface normal line: less than 30°



Figure 1-MVG COMOSAR Dosimetric E field Dipole

3.2.2 Phantom

For the measurements the Specific Anthropomorphic Mannequin (SAM) defined by the IEEE SCC-34/SC2 group is used. The phantom is a polyurethane shell integrated in a wooden table. The thickness of the phantom amounts to 2mm +/- 0.2mm. It enables the dosimetric evaluation of left and right phone usage and includes an additional flat phantom part for the simplified performance check. The phantom set-up includes a cover, which prevents the evaporation of the liquid.

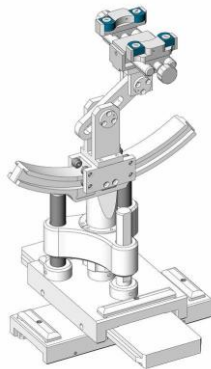
SN 32/14 SAM115



SN 32/14 SAM116



3.2.3 Device Holder



The SAR in the phantom is approximately inversely proportional to the square of the distance between the source and the liquid surface. For a source at 5 mm distance, a positioning uncertainty of ± 0.5 mm would produce a SAR uncertainty of ± 20 %. Accurate device positioning is therefore crucial for accurate and repeatable measurements. The positions in which the devices must be measured are defined by the standards.

4. Tissue Simulating Liquids



4. Tissue Simulating Liquids

4.1 Simulating Liquids Parameter Check

The head tissue dielectric parameters recommended by the IEEE SCC-34/SC-2 in P1528 have been incorporated in the following table. These head parameters are derived from planar layer models simulating the highest expected SAR for the dielectric properties and tissue thickness variations in a human head. Other head and body tissue parameters that have not been specified in P1528 are derived from the tissue dielectric parameters computed from the 4-Cole-Cole equations described in Reference [12] and extrapolated according to the head parameters specified in P1528.

Head Tissue

Frequency (MHz)	cellulose	DGBE	HEC	NaCl	Preventol	Sugar	X100	Water	Conductivity	Permittivity
	%	%	%	%	%	%	%	%	σ	ϵ_r
750	0.2	/	/	1.4	0.2	57.0	/	41.1	0.89	41.9
835	0.2	/	/	1.4	0.2	57.9	/	40.3	0.90	41.5
900	0.2	/	/	1.4	0.2	57.9	/	40.3	0.97	41.5
1800	/	44.5	/	0.3	/	/	30.45	55.2	1.4	40.0
1900	/	44.5	/	0.3	/	/	30.45	55.2	1.4	40.0
2000	/	44.5	/	0.3	/	/	/	55.2	1.4	40.0
2450	/	44.9	/	0.1	/	/	/	55.0	1.80	39.2
2600	/	45.0	/	0.1	/	/	/	54.9	1.96	39.0

Body Tissue

Frequency (MHz)	cellulose	DGBE	HEC	NaCl	Preventol	Sugar	X100	Water	Conductivity	Permittivity
	%	%	%	%	%	%	%	%	σ	ϵ_r
750	0.2	/	/	0.9	0.1	47.2	/	51.7	0.96	55.5
835	0.2	/	/	0.9	0.1	48.2	/	50.8	0.97	55.2
900	0.2	/	/	0.9	0.1	48.2	/	50.8	1.05	55.0
1800	/	29.4	/	0.4	/	/	30.45	70.2	1.52	53.3
1900	/	29.4	/	0.4	/	/	30.45	70.2	1.52	53.3
2000	/	29.4	/	0.4	/	/	/	70.2	1.52	53.3
2450	/	31.3	/	0.1	/	/	/	68.6	1.95	52.7
2600	/	31.7	/	0.1	/	/	/	68.2	2.16	52.3

Tissue dielectric parameters for head and body phantoms

Frequency	ϵ_r		σ S/m	
	Head	Body	Head	Body
	300	45.3	58.2	0.87
450	43.5	56.7	0.87	0.94
900	41.5	55.0	0.97	1.05
1450	40.5	54.0	1.20	1.30
1800	40.0	53.3	1.40	1.52
2450	39.2	52.7	1.80	1.95
3000	38.5	52.0	2.40	2.73
5800	35.3	48.2	5.27	6.00

**LIQUID MEASUREMENT RESULTS**

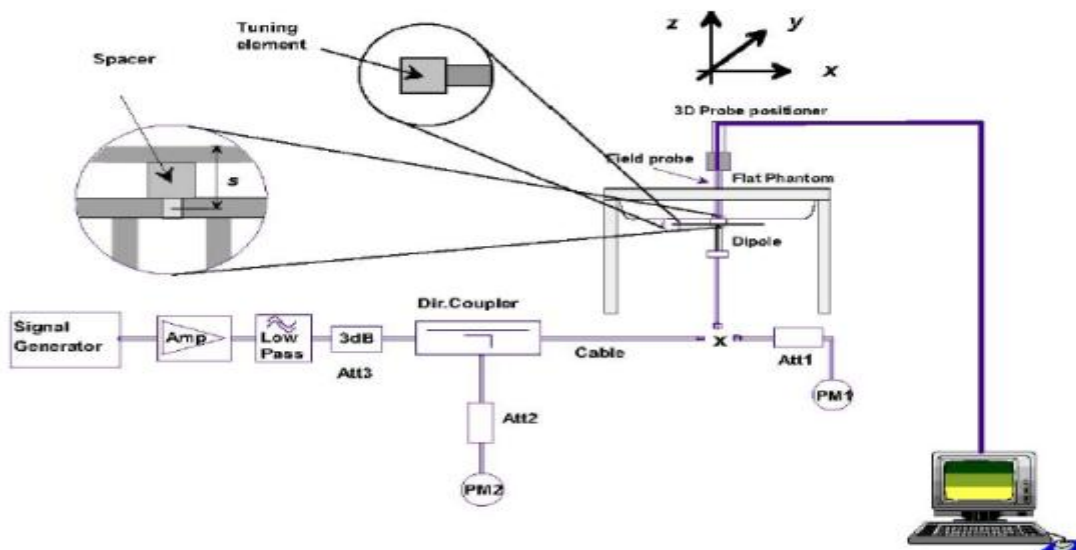
Date	Ambient condition		Simulating Liquid		Parameters	Target	Measured	Deviation [%]	Limited [%]
	Temp. [°C]	Humidity [%]	Frequency	Temp. [°C]					
2020-06-02	22.5	60	750 MHz	22.3	Permittivity:	41.9	42.47	1.37	±10
					Conductivity:	0.89	0.92	3.99	±10
2020-06-03	23.6	55	835 MHz	23.3	Permittivity:	41.5	42.45	2.30	±10
					Conductivity:	0.9	0.90	0.36	±10
2020-06-04	24.1	54	1800 MHz	23.8	Permittivity:	40	39.79	-0.53	±10
					Conductivity:	1.40	1.42	1.41	±10
2020-06-05	23.7	48	1900 MHz	23.5	Permittivity:	40	41.38	3.45	±10
					Conductivity:	1.4	1.42	1.43	±10
2020-06-08	23.5	55	2450 MHz	23.1	Permittivity:	39.2	39.09	-0.28	±10
					Conductivity:	1.8	1.84	2.17	±10



5. SAR System Validation

5.1 Validation System

Each MVG system is equipped with one or more system validation kits. These units, together with the predefined measurement procedures within the MVG software, enable the user to conduct the system performance check and system validation. System kit includes a dipole, and dipole device holder. The system check verifies that the system operates within its specifications. It's performed daily or before every SAR measurement. The system check uses normal SAR measurement in the flat section of the phantom with a matched dipole at a specified distance. The system validation setup is shown as below.



5.2 Validation Result

Comparing to the original SAR value provided by MVG, the validation data should be within its specification of 10 %.

Freq.(MHz)	Power(mW)	Tested Value (W/Kg)	Normalized SAR (W/kg/W)	Target (W/Kg/W)	Tolerance(%)	Date
750	100	0.861	8.61	8.49	1.46	2020-06-02
835	100	0.957	9.57	9.56	0.12	2020-06-03
1800	100	3.801	38.01	38.4	-1.01	2020-06-04
1900	100	4.126	41.26	39.7	3.93	2020-06-05
2450	100	5.290	52.90	52.4	0.96	2020-06-08

Note:

1. The tolerance limit of System validation $\pm 10\%$.
2. The dipole input power (forward power) was 100 mW.
3. The results are normalized to 1 W input power.



6. SAR Evaluation Procedures

The procedure for assessing the average SAR value consists of the following steps:

The following steps are used for each test position

- Establish a call with the maximum output power with a base station simulator. The connection between the mobile and the base station simulator is established via air interface
- Measurement of the local E-field value at a fixed location. This value serves as a reference value for calculating a possible power drift.
- Measurement of the SAR distribution with a grid of 8 to 16mm * 8 to 16 mm and a constant distance to the inner surface of the phantom. Since the sensors cannot directly measure at the inner phantom surface, the values between the sensors and the inner phantom surface are extrapolated. With these values the area of the maximum SAR is calculated by an interpolation scheme.
- Around this point, a cube of 30 * 30 * 30 mm or 32 * 32 * 32 mm is assessed by measuring 5 or 8 * 5 or 8*4 or 5 mm. With these data, the peak spatial-average SAR value can be calculated.

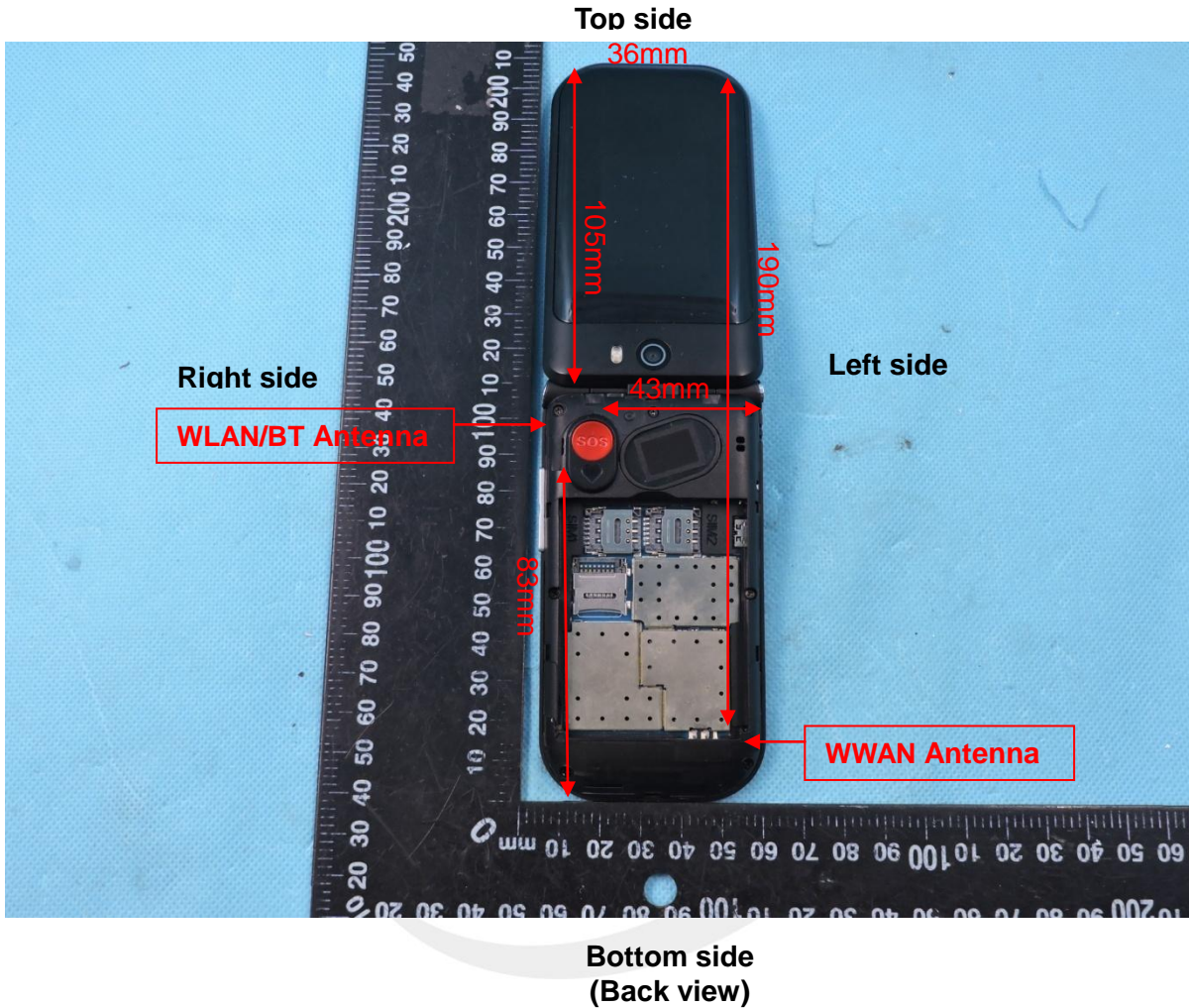
➤ Area Scan & Zoom Scan

First Area Scan is used to locate the approximate location(s) of the local peak SAR value(s). The measurement grid within an Area Scan is defined by the grid extent, grid step size and grid offset. Next, in order to determine the EM field distribution in a three-dimensional spatial extension, Zoom Scan is required. The Zoom Scan is performed around the highest E-field value to determine the averaged SAR-distribution over 10 g. Area scan and zoom scan resolution setting follows KDB 865664 D01 quoted below.

When the 1-g SAR of the highest peak is within 2 dB of the SAR limit, additional zoom scans are required for other peaks within 2 dB of the highest peak that have not been included in any zoom scan to ensure there is no increase in SAR.

7. EUT Antenna Location Sketch

It is a 4G phone, support GSM/WCDMA/LTE mode.



Note 1: The antenna information refer the manufacturer provide report, applicable only to the tested sample identified in the report.



7.1 SAR test exclusion consider table

According with FCC KDB 447498 D01, appendix A, <SAR test exclusion thresholds for 100MHz ~6GHz and ≤50mm> table, this device SAR test configurations consider as following:

Band	Test position configurations					
	Front	Back	Right edge	Left edge	Top edge	Bottom edge
WWAN	<5mm	<5mm	<5mm	<5mm	190mm	<5mm
	Yes	Yes	Yes	Yes	No	Yes
WLAN/BT	<5mm	<5mm	<5mm	43mm	105mm	83mm
	Yes	Yes	Yes	No	No	No

Note:

- Maximum power is the source-based time-average power and represents the maximum RF output power among production units.
- Per KDB 447498 D01, for larger devices, the test separation distance of adjacent edge configuration is determined by the closest separation between the antenna and the user.
- per KDB 447498 D01, standalone SAR test exclusion threshold is applied; if the distance of the antenna to the user is <5mm, 5mm is user to determine SAR exclusion threshold
- per KDB 447498 D01, the 1-g and 10-g SAR test exclusion thresholds for 100 MHz to 6 GHz at test separation distance ≤50mm are determined by:

$$[(\text{max. power of channel, including tune-up tolerance, Mw}) / (\text{min. test separation distance, mm})] * \sqrt{f(\text{GHz})} \leq 3.0$$
for 1-g SAR and ≤ 7.5 for 10-g extremity SAR ,f(GHz) is the RF channel transmit frequency in GHz. Power and distance are rounded to the nearest mW and mm before calculation. The result is rounded to one decimal place for comparison
For <50mm distance, we just calculate mW of the exclusion threshold value(3.0)to do compare
- per KDB 447498 D01, at 100 MHz to 6GHz and for test separation distances >50mm, the SAR test exclusion threshold is determined according to the following
a) [threshold at 50mm in step 1] + (test separation distance -50mm) * (f (MHz)/150)]Mw, at 100 MHz to 1500 MHz
b) [threshold at 50mm in step1] + (test separation distance -50mm) * 10]mW at > 1500MHz and ≤6GHz
- Per KDB 447498 D02, RMC 12.2kbps setting is used to evaluate SAR. If HSDPA/ HSUPA/DC-HSDPA output power is <0.25db higher than RMC 12.2Kbps, or reported SAR with RMC 12.2kbps setting is ≤1.2W/Kg, HSDPA/HSUPA/DC-HSDPA SAR evaluation can be excluded.
- Per KDB 248227 D01, choose the highest output power channel to test SAR and determine further SAR exclusion 8.for each frequency band, testing at higher data rates and higher order modulations is not required when the maximum average output power for each of each of these configurations is less than 1/4db higher than those measured at the lower data rate than 11b mode, thus the SAR can be excluded.

8. EUT Test Position

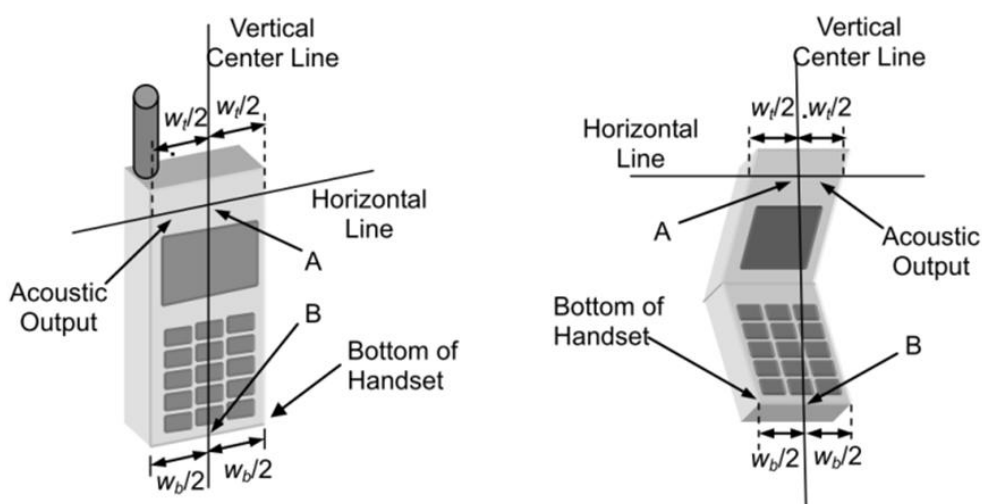
This EUT was tested in Right Cheek, Right Titled, Left Cheek, Left Titled, Front Face and Rear Face.

8.1 Define Two Imaginary Lines on the Handset

(1) The vertical centerline passes through two points on the front side of the handset: the midpoint of the width w_t of the handset at the level of the acoustic output, and the midpoint of the width w_b of the handset.

(2) The horizontal line is perpendicular to the vertical centerline and passes through the center of the acoustic output. The horizontal line is also tangential to the face of the handset at point A.

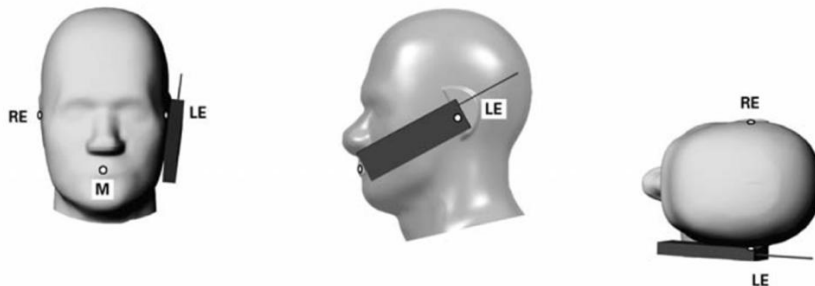
(3) The two lines intersect at point A. Note that for many handsets, point A coincides with the center of the acoustic output; however, the acoustic output may be located elsewhere on the horizontal line. Also note that the vertical centerline is not necessarily to the front face of the handset, especially for clamshell handsets, handsets with flip covers, and other irregularly shaped handsets.



Cheek Position

1) To position the device with the vertical center line of the body of the device and the horizontal line crossing the center piece in a plane parallel to the sagittal plane of the phantom. While maintaining the device in this plane, align the vertical center line with the reference plane containing the ear and mouth reference point (M: Mouth, RE: Right Ear, and LE: Left Ear) and align the center of the ear piece with the line RE-LE.

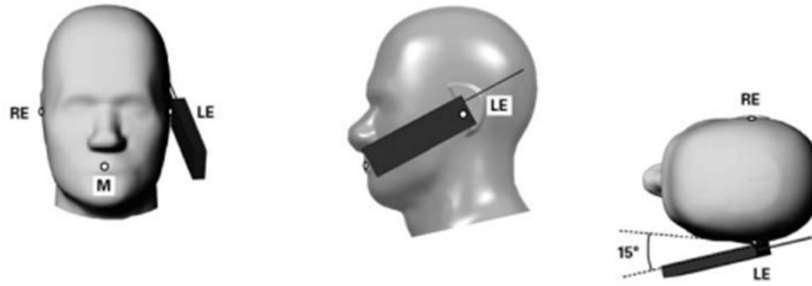
2) To move the device towards the phantom with the ear piece aligned with the line LE-RE until the phone touched the ear. While maintaining the device in the reference plane and maintaining the phone contact with ear, move the bottom of the phone until any point on the front side is in contact with the cheek of the phantom or until contact with the ear is lost.



Title Position

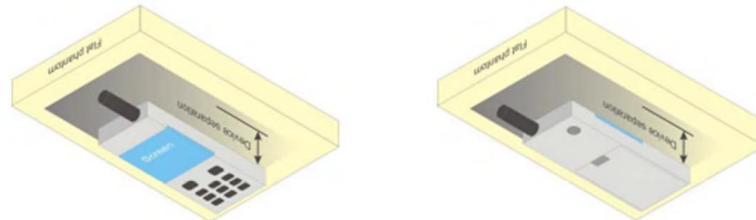
(1) To position the device in the "cheek" position described above.

(2) While maintaining the device in the reference plane described above and pivoting against the ear, moves it outward away from the mouth by an angle of 15 degrees or until with the ear is lost.



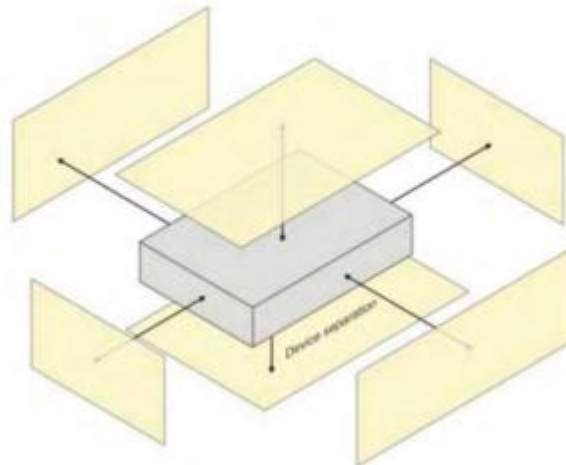
Body-worn Position Conditions:

Body-worn accessory exposure is typically related to voice mode operations when handsets are carried in body-worn accessories. The body-worn accessory procedures in KDB Publication 447498 D01 should be used to test for body-worn accessory SAR compliance, without a headset connected to it. When the same wireless transmission configuration is used for testing body-worn accessory and hotspot mode SAR, respectively, in voice and data mode, SAR results for the most conservative *test separation distance* configuration may be used to support both SAR conditions. When the *reported SAR* for a body-worn accessory, measured without a headset connected to the handset, is $> 1.2 \text{ W/kg}$, the highest *reported SAR* configuration for that wireless mode and frequency band should be repeated for the body-worn accessory with a headset attached to the handset.



8.2 Hotspot mode exposure position condition

For handsets that support hotspot mode operations, with wireless router capabilities and various web browsing function, the relevant hand and body exposure condition are tested according to the hotspot SAR procedures in KDB 941225. A test separation distance of 10 mm is required between the phantom and all surface and edges with a transmitting antenna located within 25 mm from that surface or edge. When form factor of a handset is smaller than 9cm x 5cm, a test separation distance of 5mm (instead of 10mm) is required for testing hotspot mode. When the separate distance required for body-worn accessory testing is larger than or equal to that tested for hotspot mode, in the same wireless mode and for the same surface of the phone, the hotspot mode SAR data may be used to support body-worn accessory SAR compliance for that particular configuration (surface).





9. Uncertainty

9.1 Measurement Uncertainty

The following measurement uncertainty levels have been estimated for tests performed on the EUT as specified in IEEE 1528: 2013. This uncertainty represents an expanded uncertainty expressed at approximately the 95% confidence level using a coverage factor of k=2.

Uncertainty Component	Tol (+- %)	Prob. Dist.	Div.	Ci (1g)	Ci (10g)	1g Ui (+-%)	10g Ui (+-%)	vi
Measurement System								
Probe calibration	5.831	N	1	1	1	5.83	5.83	∞
Axial Isotropy	0.695	R	$\sqrt{3}$	$\sqrt{0.5}$	$\sqrt{0.5}$	0.28	0.28	∞
Hemispherical Isotropy	1.045	R	$\sqrt{3}$	$\sqrt{0.5}$	$\sqrt{0.5}$	0.43	0.43	∞
Boundary effect	1.0	R	$\sqrt{3}$	1	1	0.58	0.58	∞
Linearity	0.685	R	$\sqrt{3}$	1	1	0.40	0.40	∞
System detection limits	1.0	R	$\sqrt{3}$	1	1	0.58	0.58	∞
Modulation response	3.0	R	$\sqrt{3}$	1	1	1.73	1.73	∞
Readout Electronics	0.021	N	1	1	1	0.021	0.021	∞
Response Time	0	R	$\sqrt{3}$	1	1	0	0	∞
Integration Time	1.4	R	$\sqrt{3}$	1	1	0.81	0.81	∞
RF ambient conditions-Noise	3.0	R	$\sqrt{3}$	1	1	1.73	1.73	∞
RF ambient conditions-reflections	3.0	R	$\sqrt{3}$	1	1	1.73	1.73	∞
Probe positioner mechanical tolerance	1.4	R	$\sqrt{3}$	1	1	0.81	0.81	∞
Probe positioning with respect to phantom shell	1.4	R	$\sqrt{3}$	1	1	0.81	0.81	∞
Post-processing	2.3	R	$\sqrt{3}$	1	1	1.33	1.33	∞
Test sample Related								
Test sample positioning	2.6	N	1	1	1	2.6	2.6	∞
Device holder uncertainty	3	N	1	1	1	3	3	∞
SAR drift measurement	5	R	$\sqrt{3}$	1	1	2.89	2.89	∞
SAR scaling	5	R	$\sqrt{3}$	1	1	2.89	2.89	∞
Phantom and tissue parameters								
Phantom uncertainty (shape and thickness uncertainty)	4	R	$\sqrt{3}$	1	1	2.31	2.31	∞
Uncertainty in SAR correction for deviations in permittivity and conductivity	1.9	N	1	1	0.84	1.90	1.60	∞
Liquid conductivity (temperature uncertainty)	2.5	R	$\sqrt{3}$	0.78	0.71	1.13	1.02	∞
Liquid conductivity (measured)	4	N	1	0.78	0.71	3.12	2.84	M
Liquid permittivity (temperature uncertainty)	2.5	R	$\sqrt{3}$	0.23	0.26	0.33	0.38	∞
Liquid permittivity (measured)	5	N	1	0.23	0.26	1.15	1.30	M
Combined Standard Uncertainty		RSS				9.79	9.59	
Expanded Uncertainty (95% Confidence interval)		K=2				19.58	19.18	



9.2 System validation Uncertainty

Uncertainty Component	Tol (+-%)	Prob. Dist.	Div.	Ci (1g)	Ci (10g)	1g Ui (+-%)	10g Ui (+-%)	vi
Measurement System								
Probe calibration	5.831	N	1	1	1	5.83	5.83	∞
Axial Isotropy	0.695	R	$\sqrt{3}$	1	1	0.40	0.40	∞
Hemispherical Isotropy	1.045	R	$\sqrt{3}$	0	0	0.00	0.00	∞
Boundary effect	1.0	R	$\sqrt{3}$	1	1	0.58	0.58	∞
Linearity	0.685	R	$\sqrt{3}$	1	1	0.40	0.40	∞
System detection limits	1.0	R	$\sqrt{3}$	1	1	0.58	0.58	∞
Modulation response	3.0	R	$\sqrt{3}$	0	0	0.00	0.00	∞
Readout Electronics	0.021	N	1	1	1	0.021	0.021	∞
Response Time	0.0	R	$\sqrt{3}$	0	0	0.00	0.00	∞
Integration Time	1.4	R	$\sqrt{3}$	0	0	0.00	0.00	∞
RF ambient conditions-Noise	3.0	R	$\sqrt{3}$	1	1	1.73	1.73	∞
RF ambient conditions-reflections	3.0	R	$\sqrt{3}$	1	1	1.73	1.73	∞
Probe positioner mechanical tolerance	1.4	R	$\sqrt{3}$	1	1	0.81	0.81	∞
Probe positioning with respect to phantom shell	1.4	R	$\sqrt{3}$	1	1	0.81	0.81	∞
Post-Processing	2.3	R	$\sqrt{3}$	1	1	1.33	1.33	∞
System validation source								
Deviation of experimental dipole from numerical dipole	5.0	N	1	1	1	5.00	5.00	∞
Input power and SAR drift measurement	5.0	R	$\sqrt{3}$	1	1	2.89	2.89	∞
Other source contribution Uncertainty	2.0	R	$\sqrt{3}$	1	1	1.15	1.15	∞
Phantom and set-up								
Phantom uncertainty (shape and thickness uncertainty)	4.0	R	$\sqrt{3}$	1	1	2.31	2.31	∞
Uncertainty in SAR correction for deviations in permittivity and conductivity	1.9	N	1	1	0.84	1.90	1.60	∞
Liquid conductivity (temperature uncertainty)	2.5	R	$\sqrt{3}$	0.78	0.71	1.13	1.02	∞
Liquid conductivity (measured)	4	N	1	0.78	0.71	3.12	2.84	M
Liquid permittivity (temperature uncertainty)	2.5	R	$\sqrt{3}$	0.23	0.26	0.33	0.38	∞
Liquid permittivity (measured)	5	N	1	0.23	0.26	1.15	1.30	M
Combined Standard Uncertainty		RSS				9.718	9.517	
Expanded Uncertainty (95% Confidence interval)		K=2				19.44	19.04	



10. Conducted Power Measurement

10.1 Test Result

Burst Average Power (dBm)						
Band	GSM 850			PCS 1900		
Channel	128	190	251	512	661	810
Frequency (MHz)	824.2	836.6	848.8	1850.2	1880	1909.8
GSM(GMSK, 1-Slot)	32.00	32.31	32.35	28.59	28.44	28.38
GPRS (GMSK, 1-Slot)	31.89	32.45	32.29	28.62	28.47	28.39
GPRS (GMSK, 2-Slot)	31.42	32.04	31.88	28.17	28.01	27.91
GPRS (GMSK, 3-Slot)	30.94	31.64	31.46	27.76	27.52	27.48
GPRS (GMSK, 4-Slot)	30.53	31.14	30.98	27.32	27.07	27.03
EGPRS(8PSK, 1-Slot)	-	-	-	-	-	-
EGPRS(8PSK, 2-Slot)	-	-	-	-	-	-
EGPRS(8PSK, 3-Slot)	-	-	-	-	-	-
EGPRS(8PSK, 4-Slot)	-	-	-	-	-	-

Remark: GPRS, CS4 coding scheme. EGPRS, MCS5 coding scheme.
 Multi-Slot Class 8, Support Max 4 downlink, 1 uplink, 5 working link
 Multi-Slot Class 10, Support Max 4 downlink, 2 uplink, 5 working link
 Multi-Slot Class 12, Support Max 4 downlink, 4 uplink, 5 working link

Fram- Average Power(dBm)						
Band	GSM 850			PCS 1900		
Channel	128	190	251	512	661	810
Frequency (MHz)	824.2	836.6	848.8	1850.2	1880.0	1909.8
GSM(GMSK, 1-Slot)	22.97	23.28	23.32	19.56	19.41	19.35
GPRS (GMSK, 1-Slot)	22.86	23.42	23.26	19.59	19.44	19.36
GPRS (GMSK, 2-Slot)	25.40	26.02	25.86	22.15	21.99	21.89
GPRS (GMSK, 3-Slot)	26.68	27.38	27.20	23.50	23.26	23.22
GPRS (GMSK, 4-Slot)	27.52	28.13	27.97	24.31	24.06	24.02
EGPRS(8PSK, 1-Slot)	-	-	-	-	-	-
EGPRS(8PSK, 2-Slot)	-	-	-	-	-	-
EGPRS(8PSK, 3-Slot)	-	-	-	-	-	-
EGPRS(8PSK, 4-Slot)	-	-	-	-	-	-

Remark :

- SAR testing was performed on the maximum frame-averaged power mode.
- The frame-averaged power is linearly proportion to the slot number configured and it is linearly scaled the maximum

Burst - averaged power based on time slots. The calculated method is shown as below:
 Frame-averaged power = Burst averaged power (1 TX Slot) – 9.03 dB
 Frame-averaged power = Burst averaged power (2 TX Slots) – 6.02 dB
 Frame-averaged power = Burst averaged power (3 TX Slots) - 4.26 dB
 Frame-averaged power = Burst averaged power (4 TX Slots) – 3.01 dB



WCDMA

Band	WCDMA Band V			WCDMA Band IV			WCDMA Band II		
Channel	4132	4183	4233	1312	1413	1513	9262	9400	9538
Frequency (MHz)	826.4	836.6	846.6	1712.6	1740	1752.4	1852.4	1880.0	1907.6
AMR 12.2Kbps	21.45	21.65	22.13	22.70	22.80	22.57	22.85	22.82	22.88
RMC 12.2Kbps	21.47	21.65	22.16	22.72	22.85	22.64	22.93	22.88	22.91
HSDPA Subtest-1	20.35	20.55	20.72	22.49	22.61	22.19	21.18	21.06	21.32
HSDPA Subtest-2	19.92	20.14	20.31	22.01	22.19	21.75	20.69	20.57	20.88
HSDPA Subtest-3	19.50	19.69	19.98	21.64	21.78	21.30	20.29	20.08	20.54
HSDPA Subtest-4	19.19	19.30	19.67	21.25	21.42	20.92	19.86	19.78	20.10
HSUPA Subtest-1	20.33	20.53	20.73	22.42	22.57	22.17	20.75	20.73	20.96
HSUPA Subtest-2	19.48	19.62	19.74	21.52	21.59	21.23	19.90	19.74	19.98
HSUPA Subtest-3	19.43	19.14	19.25	21.51	21.18	20.74	19.78	19.31	19.53
HSUPA Subtest-4	19.01	18.73	18.95	21.06	20.72	20.35	19.31	18.85	19.22
HSUPA Subtest-5	17.56	17.33	17.47	19.58	19.28	18.86	17.89	17.39	17.82

According to 3GPP 25.101 sub-clause 6.2.2, the maximum output power is allowed to be reduced by following the table.

Table 6.1A: UE maximum output power with HS-DPCCH and E-DCH

UE Transmit Channel Configuration	CM(db)	MPR(db)
For all combinations of ,DPDCH,DPCCH HS-DPDCH,E-DPDCH and E-DPCCH	$0 \leq CM \leq 3.5$	MAX(CM-1,0)
Note: CM=1 for $\beta_c/\beta_d=12/15$, $\beta_{hs}/\beta_c=24/15$.For all other combinations of DPDCH, DPCCH, HS-DPCCH, E-DPDCH and E-DPCCH the MPR is based on the relative CM difference.		

The device supports MPR to solve linearity issues (ACLR or SEM) due to the higher peak-to average ratios (PAR) of the HSUPA signal. This prevents saturating the full range of the TX DAC inside of device and provides a reduced power output to the RF transceiver chip according to the Cubic Metric (a function of the combinations of DPDCH, DPCCH, HS-DPCCH, E-DPDCH and E-DPCCH).

When E-DPDCH channels are present the beta gains on those channels are reduced firsts to try to get the power under the allowed limit. If the beta gains are lowered as far as possible, then a hard limiting is applied at the maximum allowed level.

The SW currently recalculates the cubic metric every time the beta gains on the E-DPDCH are reduced. The cubic metric will likely get lower each time this is done .However, there is no reported reduction of maximum output power in the HSUPA mode since the device also provides a compensation for the power back-off by increasing the gain of TX_AGC in the transceiver (PA) device.

The end effect is that the DUT output power is identical to the case where there is no MPR in the device.

**WLAN**

Mode	Channel Number	Frequency (MHz)	Average Power (dBm)
802.11b	1	2412	10.99
	6	2437	11.59
	11	2462	9.35
802.11g	1	2412	7.00
	6	2437	9.41
	11	2462	7.59
802.11n(HT 20)	1	2412	6.75
	6	2437	9.39
	11	2462	7.39
802.11n(HT 40)	3	2422	6.70
	6	2437	7.48
	9	2452	7.26

Bluetooth

Mode	Channel Number	Frequency (MHz)	Average Power (dBm)
GFSK(1Mbps)	0	2402	0.60
	39	2441	-0.54
	78	2480	-3.69
$\pi/4$ -DQPSK(2Mbps)	0	2402	-2.30
	39	2441	-3.06
	78	2480	-6.32
8DPSK(3Mbps)	0	2402	-2.30
	39	2441	-3.07
	78	2480	-6.34

BLE

Mode	Channel Number	Frequency (MHz)	Average Power (dBm)
GFSK(1Mbps)	0	2402	-0.39
	19	2440	-2.00
	39	2480	-4.69



LTE Conducted Power

General Note:

1. Anritsu CMW500 base station simulator was used to setup the connection with EUT; the frequency band, channel bandwidth, RB allocation configuration, modulation type are set in the base station simulator to configure EUT transmitting at maximum power and at different configurations which are requested to be reported to FCC, for conducted power measurement and SAR testing.
2. Per KDB 941225 D05, when a properly configured base station simulator is used for the SAR and power measurements, spectrum plots for each RB allocation and offset configuration is not required.
3. Per KDB 941225 D05, start with the largest channel bandwidth and measure SAR for QPSK with 1 RB allocation, using the RB offset and required test channel combination with the highest maximum output power for RB offsets at the upper edge, middle and lower edge of each required test channel.
4. Per KDB 941225 D05, 50% RB allocation for QPSK SAR testing follows 1RB QPSK allocation procedure.
5. Per KDB 941225 D05, For QPSK with 100% RB allocation, SAR is not required when the highest maximum output power for 100 % RB allocation is less than the highest maximum output power in 50% and 1 RB allocations and the highest reported SAR for 1 RB and 50% RB allocation are ≤ 0.8 W/kg. Otherwise, SAR is measured for the highest output power channel; and if the reported SAR is > 1.45 W/kg, the remaining required test channels must also be tested.
6. Per KDB 941225 D05, 16QAM output power for each RB allocation configuration is $>$ not $\frac{1}{2}$ dB higher than the same configuration in QPSK and the reported SAR for the QPSK configuration is ≤ 1.45 W/kg; Per KDB 941225 D05, 16QAM SAR testing is not required.
7. Per KDB 941225 D05, Smaller bandwidth output power for each RB allocation configuration is $>$ not $\frac{1}{2}$ dB higher than the same configuration in the largest supported bandwidth, and the reported SAR for the largest supported bandwidth is ≤ 1.45 W/kg; Per KDB 941225 D05, smaller bandwidth SAR testing is not required.



LTE Band 2

LTE Band 2 Maximum Average Power [dBm]						
BW [MHz]	RB Size	RB Offset	Mod	Lowest	Middle	Highest
1.4	1	0	QPSK	22.81	22.68	22.96
1.4	1	2		22.53	22.45	22.72
1.4	1	5		22.26	22.22	22.46
1.4	3	0		21.98	22.01	22.18
1.4	3	1		21.78	21.8	21.92
1.4	3	2		21.54	21.53	21.72
1.4	6	0		21.33	21.26	21.44
1.4	1	0	16-QAM	22.53	22.45	22.69
1.4	1	2		22.3	22.17	22.46
1.4	1	5		22.04	21.88	22.26
1.4	3	0		21.81	21.67	22.03
1.4	3	1		21.54	21.44	21.82
1.4	3	2		21.27	21.19	21.53
1.4	6	0		21.02	20.92	21.28
3	1	0	QPSK	22.17	22.3	22.25
3	1	7		21.87	22.08	22.01
3	1	14		21.58	21.85	21.74
3	8	0		21.28	21.64	21.54
3	8	4		21.03	21.36	21.31
3	8	7		20.81	21.15	21.05
3	15	0		20.59	20.89	20.77
3	1	0	16-QAM	21.9	22	22.03
3	1	7		21.61	21.77	21.73
3	1	14		21.33	21.51	21.51
3	8	0		21.08	21.29	21.24
3	8	4		20.85	21.04	21.02
3	8	7		20.6	20.79	20.81
3	15	0		20.32	20.57	20.53



LTE BAND 2

LTE Band 2 Maximum Average Power [dBm]						
BW [MHz]	RB Size	RB Offset	Mod	Lowest	Middle	Highest
5	1	0	QPSK	22.43	22.39	22.33
5	1	12		22.15	22.18	22.11
5	1	24		21.91	21.95	21.84
5	12	0		21.62	21.7	21.57
5	12	6		21.35	21.49	21.27
5	12	11		21.1	21.28	21
5	25	0		20.86	21.01	20.75
5	1	0		16-QAM	22.22	22.14
5	1	12	21.94		21.91	21.89
5	1	24	21.65		21.66	21.66
5	12	0	21.35		21.41	21.37
5	12	6	21.06		21.15	21.1
5	12	11	20.8		20.94	20.8
5	25	0	20.5		20.69	20.52
10	1	0	QPSK		22.16	22.37
10	1	24		21.96	22.08	22.12
10	1	49		21.7	21.88	21.87
10	25	0		21.45	21.67	21.66
10	25	12		21.19	21.39	21.37
10	25	24		20.93	21.12	21.16
10	50	0		20.66	20.86	20.95
10	1	0		16-QAM	21.88	22.14
10	1	24	21.6		21.86	21.9
10	1	49	21.35		21.58	21.6
10	25	0	21.09		21.33	21.32
10	25	12	20.88		21.12	21.04
10	25	24	20.65		20.83	20.81
10	50	0	20.39		20.55	20.6



LTE BAND 2

LTE Band 2 Maximum Average Power [dBm]						
BW [MHz]	RB Size	RB Offset	Mod	Lowest	Middle	Highest
15	1	0	QPSK	22.61	22.7	22.55
15	1	37		22.37	22.42	22.31
15	1	74		22.08	22.14	22.09
15	36	0		21.86	21.93	21.81
15	36	18		21.6	21.71	21.56
15	36	39		21.37	21.48	21.35
15	75	0		21.1	21.27	21.12
15	1	0	16-QAM	22.31	22.49	22.28
15	1	38		22.09	22.24	22.05
15	1	75		21.8	21.95	21.83
15	36	0		21.54	21.73	21.55
15	36	18		21.27	21.53	21.32
15	36	39		21.02	21.3	21.05
15	75	0		20.78	21	20.79
20	1	0	QPSK	22.91	23.2	23.08
20	1	49		22.62	22.96	22.8
20	1	99		22.37	22.68	22.53
20	50	0		22.13	22.47	22.24
20	50	24		21.89	22.25	21.99
20	50	49		21.65	22.01	21.71
20	100	0		21.4	21.74	21.5
20	1	0	16-QAM	22.71	22.99	22.82
20	1	49		22.45	22.75	22.61
20	1	99		22.24	22.54	22.33
20	50	0		22	22.31	22.13
20	50	24		21.78	22.06	21.88
20	50	49		21.49	21.82	21.59
20	100	0		21.27	21.61	21.37



LTE BAND 5

LTE Band 5 Maximum Average Power [dBm]						
BW [MHz]	RB Size	RB Offset	Mod	Lowest	Middle	Highest
1.4	1	0	QPSK	24.28	24.15	24.72
1.4	1	2		23.98	23.93	24.5
1.4	1	5		23.69	23.65	24.21
1.4	3	0		23.45	23.41	23.93
1.4	3	1		23.22	23.2	23.71
1.4	3	2		22.98	22.91	23.47
1.4	6	0		22.74	22.61	23.18
1.4	1	0	16-QAM	24.02	23.87	24.42
1.4	1	2		23.76	23.58	24.13
1.4	1	5		23.51	23.38	23.91
1.4	3	0		23.22	23.09	23.67
1.4	3	1		23.02	22.82	23.39
1.4	3	2		22.82	22.54	23.1
1.4	6	0		22.53	22.27	22.87
3	1	0	QPSK	23.92	23.99	24.97
3	1	7		23.69	23.78	24.72
3	1	14		23.46	23.54	24.51
3	8	0		23.18	23.34	24.31
3	8	4		22.93	23.06	24.02
3	8	7		22.64	22.78	23.74
3	15	0		22.35	22.56	23.53
3	1	0	16-QAM	23.68	23.73	24.71
3	1	7		23.44	23.46	24.49
3	1	14		23.18	23.17	24.22
3	8	0		22.91	22.95	23.95
3	8	4		22.67	22.66	23.71
3	8	7		22.41	22.46	23.42
3	15	0		22.16	22.23	23.18



LTE BAND 5

LTE Band 5 Maximum Average Power [dBm]						
BW [MHz]	RB Size	RB Offset	Mod	Lowest	Middle	Highest
5	1	0	QPSK	23.99	24.5	24.6
5	1	12		23.76	24.23	24.38
5	1	24		23.49	23.99	24.16
5	12	0		23.21	23.73	23.89
5	12	6		22.96	23.44	23.67
5	12	11		22.72	23.2	23.44
5	25	0		22.44	22.97	23.2
5	1	0	16-QAM	23.75	24.29	24.31
5	1	12		23.53	24.03	24.05
5	1	24		23.28	23.78	23.75
5	12	0		22.98	23.56	23.5
5	12	6		22.69	23.31	23.28
5	12	11		22.44	23.02	22.99
5	25	0		22.15	22.76	22.72
10	1	0	QPSK	24.73	24.58	25.02
10	1	24		24.5	24.34	24.74
10	1	49		24.29	24.05	24.48
10	25	0		24.05	23.82	24.26
10	25	12		23.77	23.62	23.98
10	25	24		23.49	23.38	23.74
10	50	0		23.22	23.13	23.49
10	1	0	16-QAM	24.45	24.31	24.76
10	1	24		24.25	24.06	24.51
10	1	49		24	23.86	24.3
10	25	0		23.72	23.59	24.03
10	25	12		23.49	23.39	23.81
10	25	24		23.26	23.1	23.54
10	50	0		23.01	22.87	23.3



LTE BAND 12

LTE Band 12 Maximum Average Power [dBm]						
BW [MHz]	RB Size	RB Offset	Mod	Lowest	Middle	Highest
5	1	0	QPSK	24	24.24	24.37
5	1	12		23.77	24.01	24.1
5	1	24		23.54	23.75	23.81
5	12	0		23.25	23.47	23.58
5	12	6		23.01	23.18	23.38
5	12	11		22.72	22.95	23.14
5	25	0		22.47	22.72	22.91
5	1	0	16-QAM	23.73	24.02	24.13
5	1	12		23.53	23.76	23.91
5	1	24		23.24	23.49	23.66
5	12	0		22.94	23.25	23.45
5	12	6		22.66	22.96	23.18
5	12	11		22.39	22.75	22.94
5	25	0		22.15	22.49	22.69
10	1	0	QPSK	24.52	24.69	24.61
10	1	24		24.24	24.45	24.34
10	1	49		24	24.17	24.11
10	25	0		23.74	23.92	23.89
10	25	12		23.52	23.63	23.6
10	25	24		23.32	23.39	23.35
10	50	0		23.03	23.18	23.09
10	1	0	16-QAM	24.25	24.39	24.38
10	1	24		24.03	24.11	24.1
10	1	49		23.78	23.83	23.86
10	25	0		23.5	23.61	23.61
10	25	12		23.2	23.35	23.37
10	25	24		22.97	23.1	23.09
10	50	0		22.76	22.86	22.8



LTE BAND 66

LTE Band 66 Maximum Average Power [dBm]						
BW [MHz]	RB Size	RB Offset	Mod	Lowest	Middle	Highest
1.4	1	0	QPSK	21.43	21.24	21.37
1.4	1	2		21.18	21.04	21.15
1.4	1	5		20.9	20.81	20.86
1.4	3	0		20.66	20.55	20.6
1.4	3	1		20.38	20.33	20.38
1.4	3	2		20.1	20.11	20.16
1.4	6	0		19.86	19.85	19.93
1.4	1	0	16-QAM	21.15	21	21.11
1.4	1	2		20.87	20.78	20.84
1.4	1	5		20.65	20.54	20.64
1.4	3	0		20.45	20.28	20.37
1.4	3	1		20.23	20.05	20.09
1.4	3	2		20.01	19.76	19.81
1.4	6	0		19.76	19.51	19.58
3	1	0	QPSK	21	20.93	21.07
3	1	7		20.71	20.69	20.86
3	1	14		20.45	20.43	20.63
3	8	0		20.17	20.17	20.36
3	8	4		19.95	19.88	20.16
3	8	7		19.65	19.61	19.95
3	15	0		19.41	19.31	19.66
3	1	0	16-QAM	20.74	20.65	20.81
3	1	7		20.5	20.36	20.57
3	1	14		20.26	20.09	20.36
3	8	0		19.98	19.83	20.07
3	8	4		19.71	19.56	19.81
3	8	7		19.5	19.26	19.61
3	15	0		19.21	19.01	19.34



LTE Band 66 Maximum Average Power [dBm]						
BW [MHz]	RB Size	RB Offset	Mod	Lowest	Middle	Highest
5	1	0	QPSK	21.29	21.06	21.65
5	1	12		21.06	20.82	21.42
5	1	24		20.81	20.62	21.13
5	12	0		20.56	20.36	20.88
5	12	6		20.33	20.09	20.62
5	12	11		20.12	19.85	20.34
5	25	0		19.89	19.59	20.11
5	1	0	16-QAM	21.02	20.76	21.43
5	1	12		20.78	20.53	21.2
5	1	24		20.55	20.25	20.96
5	12	0		20.31	19.98	20.76
5	12	6		20.08	19.7	20.49
5	12	11		19.84	19.48	20.24
5	25	0		19.58	19.2	20.01
10	1	0	QPSK	21.26	21.1	21.12
10	1	24		21.05	20.82	20.87
10	1	49		20.78	20.62	20.67
10	25	0		20.56	20.36	20.37
10	25	12		20.36	20.15	20.15
10	25	24		20.15	19.91	19.93
10	50	0		19.86	19.69	19.7
10	1	0	16-QAM	21	20.9	20.89
10	1	24		20.76	20.64	20.59
10	1	49		20.53	20.37	20.35
10	25	0		20.28	20.12	20.07
10	25	12		20.08	19.91	19.84
10	25	24		19.82	19.67	19.55
10	50	0		19.55	19.41	19.3



LTE Band 66 Maximum Average Power [dBm]						
BW [MHz]	RB Size	RB Offset	Mod	Lowest	Middle	Highest
15	1	0	QPSK	21.6	21.13	21.03
15	1	37		21.38	20.87	20.8
15	1	74		21.12	20.66	20.56
15	36	0		20.84	20.44	20.35
15	36	18		20.62	20.17	20.14
15	36	39		20.34	19.92	19.85
15	75	0		20.09	19.64	19.63
15	1	0	16-QAM	21.36	20.87	20.82
15	1	38		21.15	20.61	20.61
15	1	75		20.94	20.36	20.35
15	36	0		20.68	20.11	20.07
15	36	18		20.47	19.81	19.83
15	36	39		20.22	19.6	19.57
15	75	0		20.01	19.4	19.31
20	1	0	QPSK	21.69	21.52	21.73
20	1	49		21.49	21.27	21.46
20	1	99		21.27	21.02	21.21
20	50	0		21.05	20.78	20.99
20	50	24		20.81	20.49	20.72
20	50	49		20.6	20.22	20.44
20	100	0		20.38	19.99	20.18
20	1	0	16-QAM	21.44	21.28	21.52
20	1	49		21.17	21.01	21.29
20	1	99		20.91	20.75	21.04
20	50	0		20.66	20.52	20.75
20	50	24		20.45	20.25	20.49
20	50	49		20.24	20.05	20.29
20	100	0		19.96	19.75	20.06



10.2 Tune-up Power

Mode	GSM850(AVG)	GSM1900(AVG)
GSM/PCS	32±1dBm	28±1dBm
GPRS (1 Slot)	32±1dBm	28±1dBm
GPRS (2 Slot)	32±1dBm	28±1dBm
GPRS (3 Slot)	31±1dBm	27±1dBm
GPRS (4 Slot)	30.5±1dBm	27±1dBm

Mode	WCDMA Band V(AVG)	WCDMA Band IV(AVG)	WCDMA Band II(AVG)
AMR	22±1dBm	22±1dBm	22±1dBm
RMC	22±1dBm	22±1dBm	22±1dBm
HSDPA Subtest-1	20±1dBm	22±1dBm	21±1dBm
HSDPA Subtest-2	20±1dBm	22±1dBm	20±1dBm
HSDPA Subtest-3	19±1dBm	21±1dBm	20±1dBm
HSDPA Subtest-4	19±1dBm	21±1dBm	20±1dBm
HSUPA Subtest-1	20±1dBm	22±1dBm	20±1dBm
HSUPA Subtest-2	19±1dBm	21±1dBm	19±1dBm
HSUPA Subtest-3	19±1dBm	21±1dBm	19±1dBm
HSUPA Subtest-4	19±1dBm	21±1dBm	19±1dBm
HSUPA Subtest-5	17±1dBm	19±1dBm	17±1dBm

Mode	WLAN(AVG)	
IEEE 802.11b	Low	10±1dBm
	Middle	11±1dBm
	High	9±1dBm
IEEE 802.11g	10±1dBm	
IEEE 802.11n(HT 20)	Low	6±1dBm
	Middle	9±1dBm
	High	7±1dBm
IEEE 802.11n(HT 40)	7±1dBm	



Mode	BT(AVG)	
	GFSK	Low
Middle		0±1dBm
High		-3±1dBm
$\pi/4$ -DQPSK	Low	-2±1dBm
	Middle	-3±1dBm
	High	-6±1dBm
8DPSK	Low	-2±1dBm
	Middle	-3±1dBm
	High	-6±1dBm

Mode	BLE(AVG)	
	GFSK	Low
Middle		-2±1dBm
High		-4±1dBm



LTE

BW[MHz]	RB Size	Mode	Band 2	Band 5	Band 12	Band 66
1.4	1	QPSK	22±1dBm	24±1dBm	N/A	21±1dBm
1.4	3		21±1dBm	23±1dBm	N/A	20±1dBm
1.4	6		21±1dBm	23±1dBm	N/A	19±1dBm
1.4	1	16- QAM	22±1dBm	24±1dBm	N/A	21±1dBm
1.4	3		21±1dBm	23±1dBm	N/A	20±1dBm
1.4	6		21±1dBm	22±1dBm	N/A	19±1dBm
3	1	QPSK	22±1dBm	23±1dBm	N/A	21±1dBm
3	8		21±1dBm	23±1dBm	N/A	20±1dBm
3	15		20±1dBm	23±1dBm	N/A	19±1dBm
3	1	16- QAM	22±1dBm	24±1dBm	N/A	20±1dBm
3	8		21±1dBm	23±1dBm	N/A	20±1dBm
3	15		20±1dBm	23±1dBm	N/A	19±1dBm
5	1	QPSK	22±1dBm	24±1dBm	24±1dBm	21±1dBm
5	12		21±1dBm	23±1dBm	23±1dBm	20±1dBm
5	25		21±1dBm	23±1dBm	22±1dBm	20±1dBm
5	1	16- QAM	22±1dBm	24±1dBm	24±1dBm	21±1dBm
5	12		21±1dBm	23±1dBm	23±1dBm	20±1dBm
5	25		20±1dBm	22±1dBm	22±1dBm	20±1dBm
10	1	QPSK	22±1dBm	25±1dBm	24±1dBm	21±1dBm
10	25		21±1dBm	24±1dBm	23±1dBm	20±1dBm
10	50		20±1dBm	23±1dBm	23±1dBm	19±1dBm
10	1	16- QAM	22±1dBm	24±1dBm	24±1dBm	20±1dBm
10	25		21±1dBm	24±1dBm	23±1dBm	20±1dBm
10	50		20±1dBm	23±1dBm	22±1dBm	19±1dBm
15	1	QPSK	22±1dBm	N/A	N/A	21±1dBm
15	36		21±1dBm	N/A	N/A	20±1dBm
15	75		21±1dBm	N/A	N/A	20±1dBm
15	1	16- QAM	22±1dBm	N/A	N/A	21±1dBm
15	36		21±1dBm	N/A	N/A	20±1dBm
15	75		21±1dBm	N/A	N/A	20±1dBm
20	1	QPSK	23±1dBm	N/A	N/A	21±1dBm
20	50		22±1dBm	N/A	N/A	21±1dBm
20	100		21±1dBm	N/A	N/A	20±1dBm
20	1	16- QAM	22±1dBm	N/A	N/A	21±1dBm
20	50		22±1dBm	N/A	N/A	20.1±1dBm
20	100		21±1dBm	N/A	N/A	20±1dBm



10.3 SAR Test Exclusions Applied

Per FCC KDB 447498D01, the 1-g SAR and 10-g SAR test exclusion thresholds for 100 MHz to 6 GHz at test separation distances ≤ 50 mm are determined by:

$[(\text{max. power of channel, including tune-up tolerance, mW})/(\text{min. test separation distance, mm})] \cdot [\sqrt{f(\text{GHZ})}] \leq 3.0$ for 1-g SAR and ≤ 7.5 for 10-g extremity SAR, where:

- $f(\text{GHZ})$ is the RF channel transmit frequency in GHz
- Power and distance are rounded to the nearest mW and mm before calculation
- The result is rounded to one decimal place for comparison

When the minimum test separation distance is < 5 mm, a distance of 5 mm is applied to determine SAR test exclusion.

$$\frac{\text{Max Power of Channel (mW)}}{\text{Test Separation Dist (mm)}} * \sqrt{\text{Frequency(GHz)}} \leq 3.0$$

Based on the maximum conducted power of **Bluetooth Head** (rounded to the nearest mW) and the antenna to user separation distance,

Bluetooth Head SAR was not required; $[(1.259/5) * \sqrt{2.480}] = 0.40 < 3.0$.

Based on the maximum conducted power of **Bluetooth Body** (rounded to the nearest mW) and the antenna to user separation distance,

Bluetooth Body SAR was not required; $[(1.259/10) * \sqrt{2.480}] = 0.20 < 3.0$.

Based on the maximum conducted power of **2.4 GHz WLAN Head** (rounded to the nearest mW) and the antenna to user separation distance,

2.4 GHz WLAN SAR was required; $[(15.849/5) * \sqrt{2.462}] = 4.97 > 3.0$.

Based on the maximum conducted power of **2.4 GHz WLAN Body** (rounded to the nearest mW) and the antenna to user separation distance,

2.4 GHz WLAN SAR was not required; $[(15.849/10) * \sqrt{2.462}] = 2.49 < 3.0$.

11. EUT and Test Setup Photo

11.1 EUT Photo

Front side



Back side



Top side



Bottom side



Left side



Right side



11.2 Setup Photo

Right Touch



Right Tilt



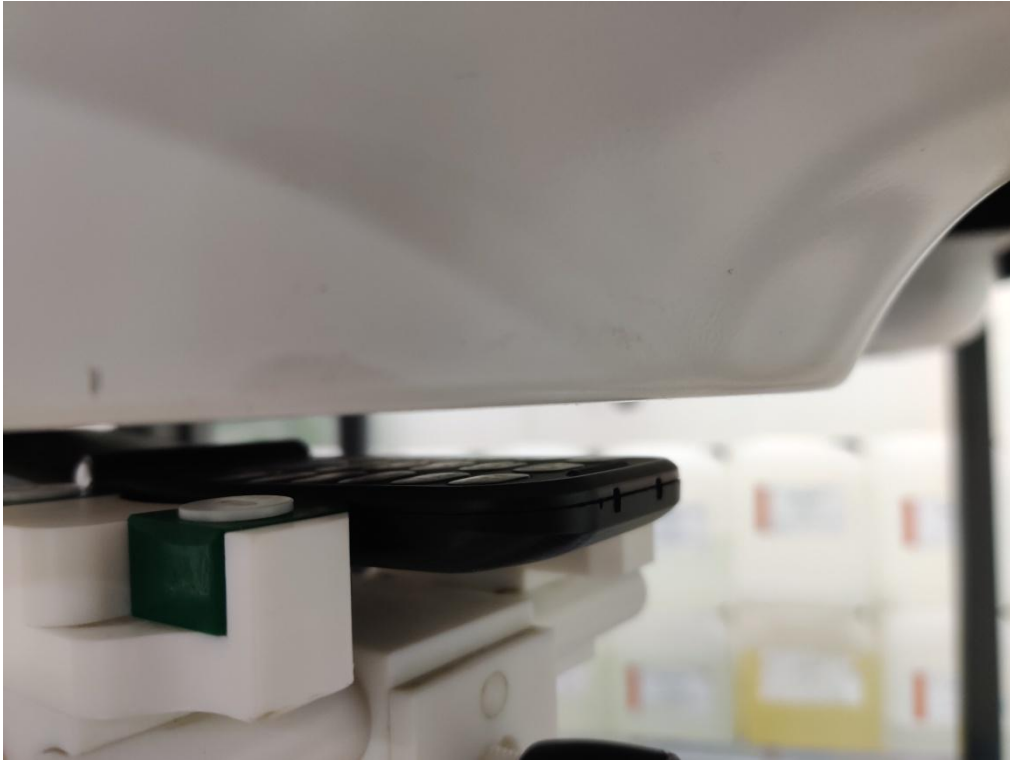
Left Touch



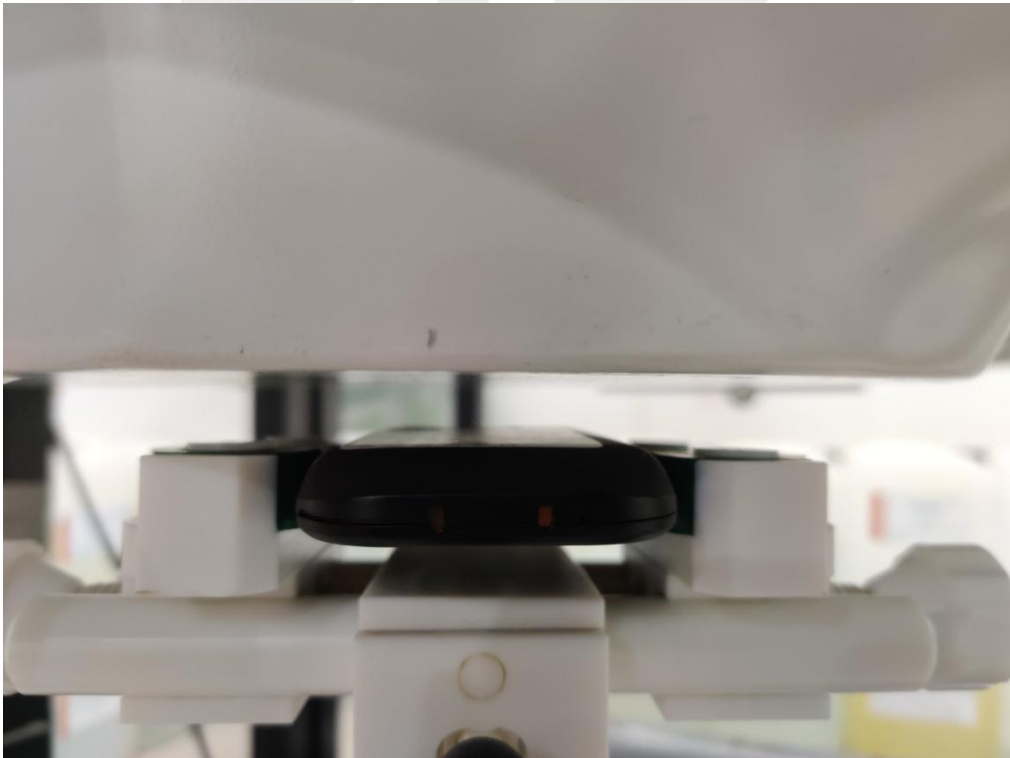
Left Tilt



Body Front side(separation distance is 10mm)



Body Back side(separation distance is 10mm)



Body left side(separation distance is 10mm)



Body right side(separation distance is 10mm)



Body Bottom side(separation distance is 10mm)



Liquid depth (15 cm)





12. SAR Result Summary

12.1 Head SAR

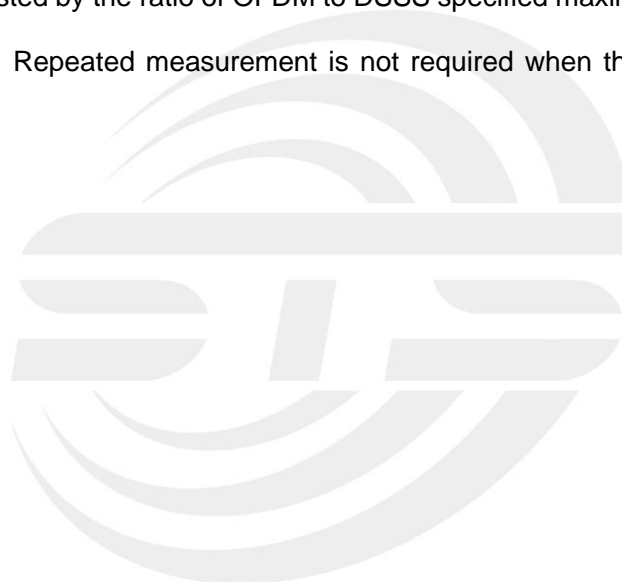
Band	Mode	Test Position	Ch.	Result 1g (W/Kg)	Power Drift(%)	Max.Turn-up Power(dBm)	Meas.Output Power(dBm)	Scaled SAR (W/Kg)	Meas. No.
GSM 850	GPRS Data-4 Slot	Right Cheek	190	0.193	-1.79	31.5	31.14	0.210	1
		Right Tilt	190	0.112	-1.93	31.5	31.14	0.122	/
		Left Cheek	190	0.167	2.01	31.5	31.14	0.181	/
		Left Tilt	190	0.101	-3.36	31.5	31.14	0.110	/
GSM1900	GPRS Data-4 Slot	Right Cheek	512	0.179	0.193	28	27.32	0.209	3
		Right Tilt	512	0.102	0.112	28	27.32	0.119	/
		Left Cheek	512	0.157	0.167	28	27.32	0.184	/
		Left Tilt	512	0.083	0.101	28	27.32	0.097	/
WCDMA II	RMC	Right Cheek	9262	0.298	-2.93	23	22.93	0.303	5
		Right Tilt	9262	0.136	-2.32	23	22.93	0.138	/
		Left Cheek	9262	0.203	-0.82	23	22.93	0.206	/
		Left Tilt	9262	0.118	-1.52	23	22.93	0.120	/
WCDMA IV	RMC	Right Cheek	1413	0.655	-3.62	23	22.85	0.678	7
		Right Tilt	1413	0.218	-3.73	23	22.85	0.226	/
		Left Cheek	1413	0.501	0.97	23	22.85	0.519	/
		Left Tilt	1413	0.170	0.19	23	22.85	0.176	/
WCDMA V	RMC	Right Cheek	4233	0.114	-1.84	23	22.16	0.138	9
		Right Tilt	4233	0.069	3.42	23	22.16	0.084	/
		Left Cheek	4233	0.101	-2.68	23	22.16	0.123	/
		Left Tilt	4233	0.052	0.66	23	22.16	0.063	/



Band	Mode	Test Position	Ch.	Result 1g (W/Kg)	Power Drift(%)	Max.Turn-up Power(dBm)	Meas.Output Power(dBm)	Duty cycle(%)	Scaled SAR (W/Kg)	Meas. No.
WLAN	802.11b	Right Cheek	6	0.104	-2.50	12	11.59	100%	0.114	11
		Right Tilt	6	0.045	-0.02	12	11.59	100%	0.049	/
		Left Cheek	6	0.087	-1.44	12	11.59	100%	0.096	/
		Left Tilt	6	0.030	0.40	12	11.59	100%	0.033	/

Note:

- Per KDB 447498 D01, the reported SAR is the measured SAR value adjusted for maximum tune-up tolerance.
 - Tune-up scaling Factor = tune-up limit power (mW) / EUT RF power (mW), where tune-up limit is the maximum rated power among all production units.
 - For WWAN: Scaled SAR(W/kg)= Measured SAR(W/kg)*Tune-up Scaling Factor
- Per KDB 248227- When the highest reported SAR for DSSS is adjusted by the ratio of OFDM to DSSS specified maximum output power and the adjusted SAR is ≤ 1.2 W/kg. (The highest reported SAR for DSSS is adjusted by the ratio of OFDM to DSSS specified maximum output power was 0.069 W/Kg for Head)
- Per KDB865664 D01, Repeated measurement is not required when the original highest measured SAR is <0.80 W/kg





Band	BW (MHz)	Mod.	RB Size	RB offset	Test Position	Ch.	Result 1g (W/Kg)	Power Drift(%)	Max. Turn-up Power(dBm)	Meas. Output Power(dBm)	Scaled SAR (W/Kg)	Meas. No.
LTE Band 2	20M	QPSK	1	0	Right Cheek	18900	0.466	-2.14	24	23.2	0.560	13
			50	0	Right Cheek	18900	0.401	-0.43	23	22.47	0.453	/
			1	0	Right Tilt	18900	0.209	0.13	24	23.2	0.251	/
			50	0	Right Tilt	18900	0.171	-1.04	23	22.47	0.193	/
			1	0	Left Cheek	18900	0.417	1.71	24	23.2	0.501	/
			50	0	Left Cheek	18900	0.362	0.32	23	22.47	0.409	/
			1	0	Left Tilt	18900	0.172	1.73	24	23.2	0.207	/
			50	0	Left Tilt	18900	0.149	-2.92	23	22.47	0.168	/
LTE Band 5	10M	QPSK	1	0	Right Cheek	20600	0.109	3.41	26	25.02	0.137	15
			25	0	Right Cheek	20600	0.082	2.73	25	24.48	0.092	/
			1	0	Right Tilt	20600	0.053	-2.98	26	25.02	0.066	/
			25	0	Right Tilt	20600	0.031	-2.22	25	24.48	0.035	/
			1	0	Left Cheek	20600	0.089	3.19	26	25.02	0.112	/
			25	0	Left Cheek	20600	0.063	2.26	25	24.48	0.071	/
			1	0	Left Tilt	20600	0.030	-0.03	26	25.02	0.038	/
			25	0	Left Tilt	20600	0.021	-2.01	25	24.48	0.024	/
LTE Band 12	10M	QPSK	1	0	Right Cheek	23095	0.029	-1.18	25	24.69	0.031	17
			25	0	Right Cheek	23095	0.021	2.84	24	23.92	0.021	/
			1	0	Right Tilt	23095	0.013	-0.78	25	24.69	0.014	/
			25	0	Right Tilt	23095	0.010	1.78	24	23.92	0.010	/
			1	0	Left Cheek	23095	0.024	-1.80	25	24.69	0.026	/
			25	0	Left Cheek	23095	0.019	0.06	24	23.92	0.019	/
			1	0	Left Tilt	23095	0.009	-0.82	25	24.69	0.010	/
			25	0	Left Tilt	23095	0.007	3.20	24	23.92	0.007	/
LTE Band 66	20M	QPSK	1	0	Right Cheek	132572	0.414	-3.77	22	21.73	0.441	19
			50	0	Right Cheek	132072	0.351	3.27	20.1	21.05	0.282	/
			1	0	Right Tilt	132572	0.173	0.19	22	21.73	0.184	/
			50	0	Right Tilt	132072	0.140	-2.79	20.1	21.05	0.112	/
			1	0	Left Cheek	132572	0.357	2.86	22	21.73	0.380	/
			50	0	Left Cheek	132072	0.300	-1.21	20.1	21.05	0.241	/
			1	0	Left Tilt	132572	0.139	-0.31	22	21.73	0.148	/
			50	0	Left Tilt	132072	0.102	2.84	20.1	21.05	0.082	/



12.2 Body-worn and Hotspot SAR

Band	Mode	Test Position	Ch.	Result 1g (W/Kg)	Power Drift(%)	Max.Turn-up Power(dBm)	Meas.Output Power(dBm)	Scaled SAR (W/Kg)	Meas. No.
GSM 850	GPRS Data-4 Slot	Front side	190	0.228	1.39	31.5	31.14	0.248	/
		Back side	190	0.674	3.14	31.5	31.14	0.732	2
		Left side	190	0.102	1.76	31.5	31.14	0.111	/
		Right side	190	0.116	-0.38	31.5	31.14	0.126	/
		Bottom side	190	0.173	-2.52	31.5	31.14	0.188	/
GSM1900	GPRS Data-4 Slot	Front side	512	0.124	0.50	28	27.32	0.145	/
		Back side	512	0.376	-1.48	28	27.32	0.440	4
		Left side	512	0.035	-1.68	28	27.32	0.041	/
		Right side	512	0.047	-1.28	28	27.32	0.055	/
		Bottom side	512	0.100	0.82	28	27.32	0.117	/
WCDMA II	RMC	Front side	9262	0.372	-0.57	23	22.93	0.378	/
		Back side	9262	0.794	-1.90	23	22.93	0.807	6
		Back side	9400	0.732	2.81	23	22.88	0.753	/
		Back side	9538	0.709	-2.13	23	22.91	0.724	/
		Left side	9262	0.101	-2.10	23	22.93	0.103	/
		Right side	9262	0.134	3.67	23	22.93	0.136	/
		Bottom side	9262	0.241	-3.86	23	22.93	0.245	/
WCDMA IV	RMC	Front side	1413	0.601	2.00	23	22.85	0.622	/
		Back side	1312	1.120	1.18	23	22.72	1.195	/
		Back side	1413	1.474	-3.38	23	22.85	1.526	8
		Back side	1513	1.229	2.64	23	22.64	1.335	/
		Left side	1413	0.176	0.85	23	22.85	0.182	/
		Right side	1413	0.215	-2.97	23	22.85	0.223	/
		Bottom side	1413	0.347	-0.79	23	22.85	0.359	/
WCDMA V	RMC	Front side	4233	0.211	2.13	23	22.16	0.256	/
		Back side	4233	0.476	1.68	23	22.16	0.578	10
		Left side	4233	0.071	-3.36	23	22.16	0.086	/
		Right side	4233	0.083	-0.85	23	22.16	0.101	/
		Bottom side	4233	0.139	2.08	23	22.16	0.169	/



Band	Mode	Test Position	Ch.	Result 1g (W/Kg)	Power Drift(%)	Max.Turn-up Power(dBm)	Meas.Output Power(dBm)	Duty cycle(%)	Scaled SAR (W/Kg)	Meas. No.
WLAN	802.11b	Front side	6	0.017	-1.80	12	11.59	100	0.019	/
		Back side	6	0.023	3.97	12	11.59	100	0.025	12
		Right side	6	0.013	-3.41	12	11.59	100	0.014	/

Note:

1. The test separation of all above table is 10mm.
2. Per KDB 447498 D01, the reported SAR is the measured SAR value adjusted for maximum tune-up tolerance.
 - a. Tune-up scaling Factor = tune-up limit power (mW) / EUT RF power (mW), where tune-up limit is the maximum rated power among all production units.
 - b. For WWAN: Scaled SAR(W/kg)= Measured SAR(W/kg)*Tune-up Scaling Factor
3. Per KDB 248227- When the highest reported SAR for DSSS is adjusted by the ratio of OFDM to DSSS specified maximum output power and the adjusted SAR is ≤ 1.2 W/kg. (The highest reported SAR for DSSS is adjusted by the ratio of OFDM to DSSS specified maximum output power was 0.015 W/Kg for Body)
4. When the user enables the personal Wireless router functions for the handsets, actual operations include simultaneous transmission of both the Wi-Fi transmitting frequency and thus cannot be evaluated for SAR under actual use conditions. The "Portable Hotspot" feature on the handset was NOT activated, to ensure the SAR measurements were evaluated for a single transmission frequency RF signal.

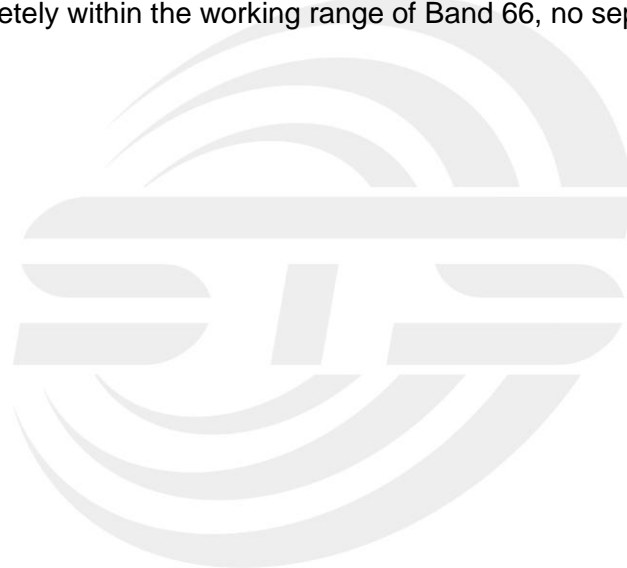


Band	BW (MHz)	Mod.	RB Size	RB offset	Test Position	Ch.	Result 1g (W/Kg)	Power Drift(%)	Max. Turn-up Power(dBm)	Meas. Output Power(dBm)	Scaled SAR (W/Kg)	Meas. No.
LTE Band 2	20M	QPSK	1	0	Front side	18900	0.621	-2.27	24	23.2	0.747	/
			50	0	Front side	18900	0.572	2.23	23	22.47	0.646	/
			1	0	Back Side	18700	0.639	-3.33	24	22.91	0.821	/
			1	0	Back Side	18900	0.815	-3.53	24	23.2	0.980	14
			1	0	Back Side	19100	0.715	-0.13	24	23.08	0.884	/
			50	0	Back Side	18900	0.703	-3.53	23	22.47	0.794	/
			100	0	Back Side	18900	0.611	-3.58	22	21.74	0.649	/
			1	0	Left Side	18900	0.148	2.79	24	23.2	0.178	/
			50	0	Left Side	18900	0.124	-1.25	23	22.47	0.140	/
			1	0	Right Side	18900	0.193	-1.69	24	23.2	0.232	/
			50	0	Right Side	18900	0.149	2.37	23	22.47	0.168	/
			1	0	Bottom Side	18900	0.410	2.84	24	23.2	0.747	/
50	0	Bottom Side	18900	0.328	3.43	23	22.47	0.646	/			
LTE Band 5	10M	QPSK	1	0	Front side	20600	0.327	1.41	26	25.02	0.410	/
			25	0	Front side	20600	0.271	-0.60	25	24.48	0.305	/
			1	0	Back Side	20600	0.599	-1.68	26	25.02	0.751	16
			25	0	Back Side	20600	0.503	3.93	25	24.48	0.567	/
			1	0	Left Side	20600	0.093	-3.88	26	25.02	0.117	/
			25	0	Left Side	20600	0.076	3.35	25	24.48	0.086	/
			1	0	Right Side	20600	0.118	-1.28	26	25.02	0.148	/
			25	0	Right Side	20600	0.093	2.54	25	24.48	0.105	/
			1	0	Bottom Side	20600	0.231	-0.57	26	25.02	0.289	/
			25	0	Bottom Side	20600	0.209	-0.43	25	24.48	0.236	/
LTE Band 12	10M	QPSK	1	0	Front side	23095	0.118	1.03	25	24.69	0.127	/
			25	0	Front side	23095	0.101	-2.18	24	23.92	0.103	/
			1	0	Back Side	23095	0.162	3.26	25	24.69	0.174	18
			25	0	Back Side	23095	0.143	-2.21	24	23.92	0.146	/
			1	0	Left Side	23095	0.042	-0.17	25	24.69	0.045	/
			25	0	Left Side	23095	0.034	-2.10	24	23.92	0.035	/
			1	0	Right Side	23095	0.053	-3.77	25	24.69	0.057	/
			25	0	Right Side	23095	0.045	-1.21	24	23.92	0.046	/
			1	0	Bottom Side	23095	0.086	-0.73	25	24.69	0.092	/
			25	0	Bottom Side	23095	0.071	-2.70	24	23.92	0.072	/



LTE Band 66	20M	QPSK	1	0	Front side	132572	0.863	-3.40	22	21.73	0.918	/
			50	0	Front side	132072	0.780	-2.33	20.1	21.05	0.627	/
			1	0	Back Side	132072	1.009	2.21	22	21.69	1.084	/
			1	0	Back Side	132322	0.924	-2.77	22	21.52	1.032	/
			1	0	Back Side	132572	1.287	-1.02	22	21.73	1.370	20
			50	0	Back Side	132072	1.019	3.23	20.1	21.05	0.819	/
			100	0	Back Side	132072	0.829	-1.93	21	20.38	0.956	/
			1	0	Left Side	132572	0.139	1.51	22	21.73	0.148	/
			50	0	Left Side	132072	0.117	2.42	20.1	21.05	0.094	/
			1	0	Right Side	132572	0.199	-3.30	22	21.73	0.212	/
			50	0	Right Side	132072	0.168	3.27	20.1	21.05	0.135	/
			1	0	Bottom Side	132572	0.375	-0.28	22	21.73	0.399	/
			50	0	Bottom Side	132072	0.291	0.66	20.1	21.05	0.234	/

Note: Band 4 falls completely within the working range of Band 66, no separate test required.



**Repeated SAR**

Band	BW (MHz)	Test Position	Ch.	Result 1g (W/Kg)	Power Drift(%)	Max.Turn-up Power(dBm)	Meas.Output Power(dBm)	Scaled SAR (W/Kg)	Meas. No.
WCDMA II	RMC	Back Side	4262	0.779	-2.87	23.	22.93	0.792	/
WCDMA IV	RMC	Back Side	1413	1.457	2.14	23	22.85	1.508	/
LTE Band 2	QPSK	Back Side	18900	0.802	-1.69	24	23.2	0.964	/
LTE Band 66	QPSK	Back Side	132572	1.272	2.55	22	21.73	1.354	/

12.3 repeated SAR measurement

Band	BW (MHz)	Test Position	Ch.	Original Measured SAR 1g(mW/g)	1 st Repeated SAR 1g	Ratio	Original Measured SAR 1g(mW/g)	2nd Repeated SAR 1g	Ratio
WCDMA II	RMC	Back Side	4262	0.794	0.779	1.02	-	-	-
WCDMA IV	RMC	Back Side	1413	1.474	1.457	1.01	-	-	-
LTE Band 2	QPSK	Back Side	18900	0.815	0.802	1.02	-	-	-
LTE Band 66	QPSK	Back Side	132572	1.287	1.272	1.02	-	-	-

Note:

1. Per KDB 865664 D01,for each frequency band ,repeated SAR measurement is required only when the measured SAR is $\geq 0.8W/Kg$.
2. Per KDB 865664 D01,if the ratio of largest to smallest SAR for the original and first repeated measurement is ≤ 1.2 and the measured SAR $< 1.45W/Kg$, only one repeated measurement is required.
3. Perform a second repeated measurement only if the ratio of largest to smallest SAR for the original and first repeated measurements is > 1.20 or when the original or repeated measurement is $\geq 1.45W/Kg$
4. The ratio is the difference in percentage between original and repeated measured SAR.



Simultaneous Multi-band Transmission Evaluation:

Application Simultaneous Transmission information:

Position	Simultaneous State
Head	1. GSM + WLAN
	2. GSM + Bluetooth
	3. WCDMA + WLAN
	4. WCDMA + Bluetooth
	5. LTE + WLAN
	6. LTE + Bluetooth
Body	1. GSM + WLAN
	2. GSM + Bluetooth
	3. WCDMA + WLAN
	4. WCDMA + Bluetooth
	5. LTE + WLAN
	6. LTE + Bluetooth

NOTE:

- Bluetooth and WLAN can't simultaneous transmission at the same time.
- For simultaneous transmission at head and body exposure position, 2 transmitters simultaneous transmission was the worst state.
- Based upon KDB 447498 D01, BT SAR is excluded as below table.
- If the test separation distance is <5mm, 5mm is used for excluded SAR calculation.
- For minimum test separation distance $\leq 50\text{mm}$, Bluetooth standalone SAR is excluded according to $[(\text{max. power of channel, including tune-up tolerance, mW}) / (\text{min. test separation distance, mm})] \cdot [\sqrt{f} (\text{GHz}) / x] \leq 3.0$ for 1-g SAR and ≤ 7.5 for 10-g extremity SAR
- The reported SAR summation is calculated based on the same configuration and test position.
- KDB 447498 / 4.3.2 (2) when standalone SAR test exclusion applies to an antenna that transmits simultaneously with other antennas, the standalone SAR must be estimated according to following to determine simultaneous transmission SAR test exclusion:
 - (max. power of channel, including tune-up tolerance, mW)/(min. test separation distance, mm) $\cdot [\sqrt{f} (\text{GHz}) / x]$ W/kg for test separation distances ≤ 50 mm; Where $x = 7.5$ for 1-g SAR, and $x = 18.75$ for 10-g SAR.
 - 0.4W/Kg for 1-g SAR and 1.0W/Kg for 10-g SAR, when the separation distance is >50mm.

Estimated SAR		Maximum Power		Antenna to user(mm)	Frequency(GHz)	Stand Alone SAR(1g) [W/kg]
		dBm	mW			
BT	Head	1	1.259	5	2.480	0.053
	Body			10	2.480	0.026



Simultaneous Mode	Position	Mode	Max. 1-g SAR (W/kg)	1-g Sum SAR (W/kg)
GSM + WLAN	Head	GSM Data	0.210	0.324
		WLAN	0.114	
	Body	GSM Data	0.732	0.757
		WLAN	0.025	
GSM + Bluetooth	Head	GSM Data	0.210	0.263
		Bluetooth	0.053	
	Body	GSM Data	0.732	0.758
		Bluetooth	0.026	
WCDMA + WLAN	Head	WCDMA RMC	0.678	0.792
		WLAN	0.114	
	Body	WCDMA RMC	1.526	1.551
		WLAN	0.025	
WCDMA + Bluetooth	Head	WCDMA RMC	0.678	0.731
		Bluetooth	0.053	
	Body	WCDMA RMC	1.526	1.552
		Bluetooth	0.026	
LTE + WLAN	Head	LTE RMC	0.560	0.674
		WLAN	0.114	
	Body	LTE RMC	1.370	1.395
		WLAN	0.025	
LTE + Bluetooth	Head	LTE RMC	0.560	0.613
		Bluetooth	0.053	
	Body	LTE RMC	1.370	1.396
		Bluetooth	0.026	

Simultaneous transmission SAR test exclusion is determined for each operating configuration and exposure condition according to the reported standalone SAR of each applicable simultaneous transmitting antenna.

When the sum of SAR 1g of all simultaneously transmitting antennas in an operating mode and exposure condition combination is within the SAR limit (SAR-1g 1.6 W/kg), the simultaneous transmission SAR is not required. When the sum of SAR 1g is greater than the SAR limit (SAR-1g 1.6 W/kg), SAR test exclusion is determined by the SPLSR.



13. Equipment List

Kind of Equipment	Manufacturer	Type No.	Serial No.	Last Calibration	Calibrated Until
750MHz Dipole	MVG	SID750	SN 30/14 DIP0G750-331	2017.08.15	2020.08.14
835MHz Dipole	MVG	SID835	SN 30/14 DIP0G835-332	2017.08.15	2020.08.14
1800MHz Dipole	MVG	SID1800	SN 30/14 DIP1G800-329	2017.08.15	2020.08.14
1900MHz Dipole	MVG	SID1900	SN 30/14 DIP1G900-333	2017.08.15	2020.08.14
2450MHzDipole	MVG	SID2450	SN 30/14 DIP2G450-335	2017.08.15	2020.08.14
E-Field Probe	MVG	SSE2	SN 14/16 EP309	2019.12.02	2020.12.01
Dielectric Probe Kit	MVG	SCLMP	SN 32/14 OCPG67	2019.11.25	2020.11.24
Antenna	MVG	ANTA3	SN 07/13 ZNTA52	N/A	N/A
Phantom1	MVG	SAM	SN 32/14 SAM115	N/A	N/A
Phantom2	MVG	SAM	SN 32/14 SAM116	N/A	N/A
Phone holder	MVG	N/A	SN 32/14 MSH97	N/A	N/A
Laptop holder	MVG	N/A	SN 32/14 LSH29	N/A	N/A
Attenuator	Agilent	99899	DC-18GHz	N/A	N/A
Directional coupler	Narda	4226-20	3305	N/A	N/A
Network Analyzer	Agilent	8753ES	US38432810	2019.10.11	2020.10.10
Multi Meter	Keithley	Multi Meter 2000	4050073	2019.10.11	2020.10.10
Signal Generator	Agilent	N5182A	MY50140530	2019.10.09	2020.10.08
Wireless Communication Test Set	Agilent	8960-E5515C	MY48360751	2019.10.09	2020.10.08
Wireless Communication Test Set	R&S	CMW500	117239	2019.10.09	2020.10.08
Power Amplifier	DESAY	ZHL-42W	9638	2019.10.09	2020.10.08
Power Meter	R&S	NRP	100510	2019.10.16	2020.10.15
Power Meter	Agilent	E4419B	QB43312265	2019.10.12	2020.10.11
Power Sensor	R&S	NRP-Z11	101919	2019.10.12	2020.10.11
Power Sensor	HP	E9300A	US39210170	2019.10.09	2020.10.08
Temperature hygrometer	SuWei	SW-108	N/A	2019.10.13	2020.10.12
Thermograph	Elitech	RC-4	S/N EF7176501537	2019.10.11	2020.10.10

Note:

Per KDB 865664 D01, Dipole SAR Validation Verification, STS LAB has adopted 3 years calibration intervals. On annual basis, every measurement dipole has been evaluated and is in compliance with the following criteria:

1. There is no physical damage on the dipole
2. System validation with specific dipole is within 10% of calibrated value

Return-loss in within 20% of calibrated measurement

Appendix A. System Validation Plots

System Performance Check Data (750MHz)

Type: Phone measurement (Complete)

Area scan resolution: dx=8mm, dy=8mm

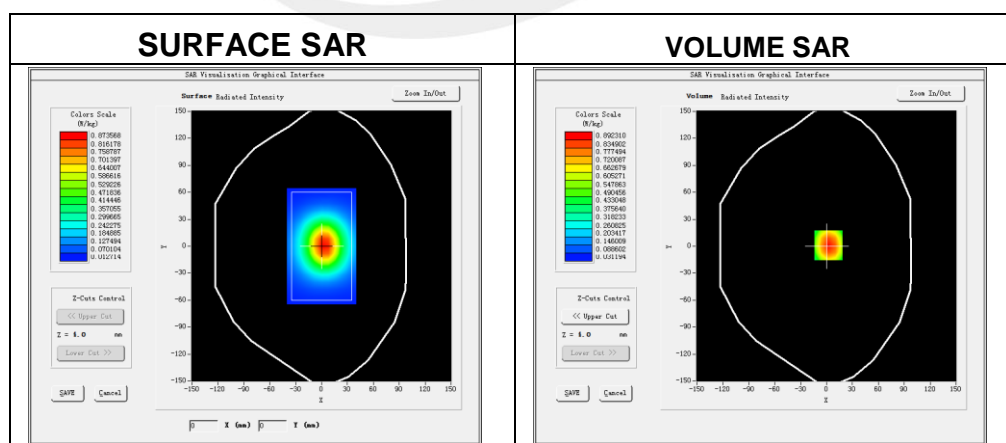
Zoom scan resolution: dx=8mm, dy=8mm, dz=5mm

Date of measurement: 2020-06-02

Measurement duration: 13 minutes 25 seconds

Experimental conditions

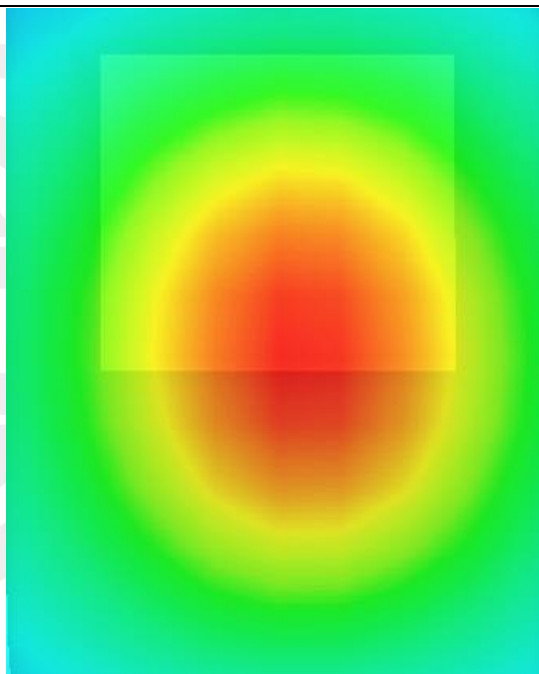
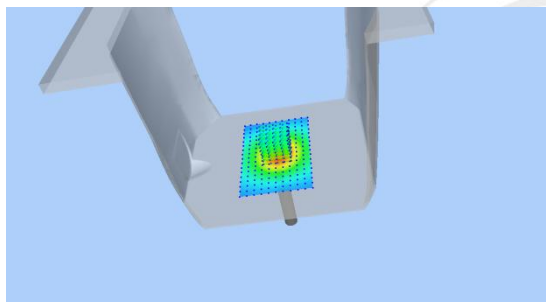
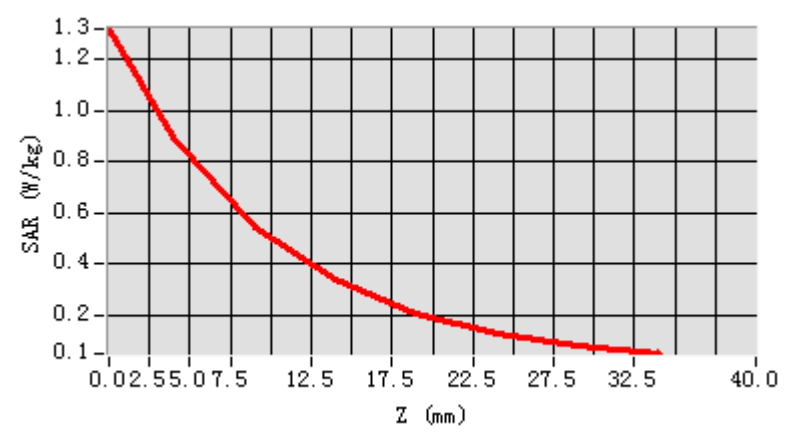
Phantom	Validation plane
Device Position	-
Band	750MHz
Channels	-
Signal	CW
Frequency (MHz)	750MHz
Relative permittivity	42.47
Conductivity (S/m)	0.92
Power drift (%)	-0.20
Probe	SN 14/16 EP309
ConvF	5.11
Crest factor	1:1



Maximum location: X=2.00, Y=1.00

SAR 10g (W/Kg)	0.535218
SAR 1g (W/Kg)	0.861078

Z Axis Scan



System Performance Check Data (835MHz)

Type: Phone measurement (Complete)

Area scan resolution: dx=8mm, dy=8mm

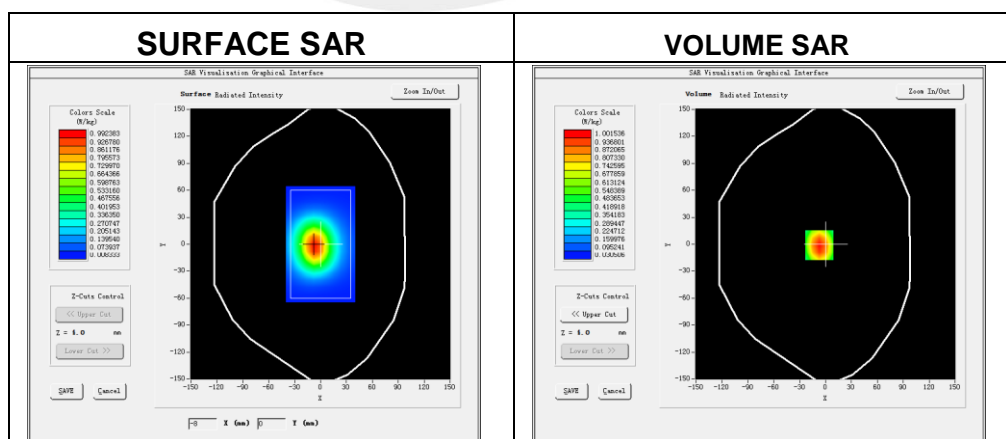
Zoom scan resolution: dx=8mm, dy=8mm, dz=5mm

Date of measurement: 2020-06-03

Measurement duration: 13 minutes 27 seconds

Experimental conditions

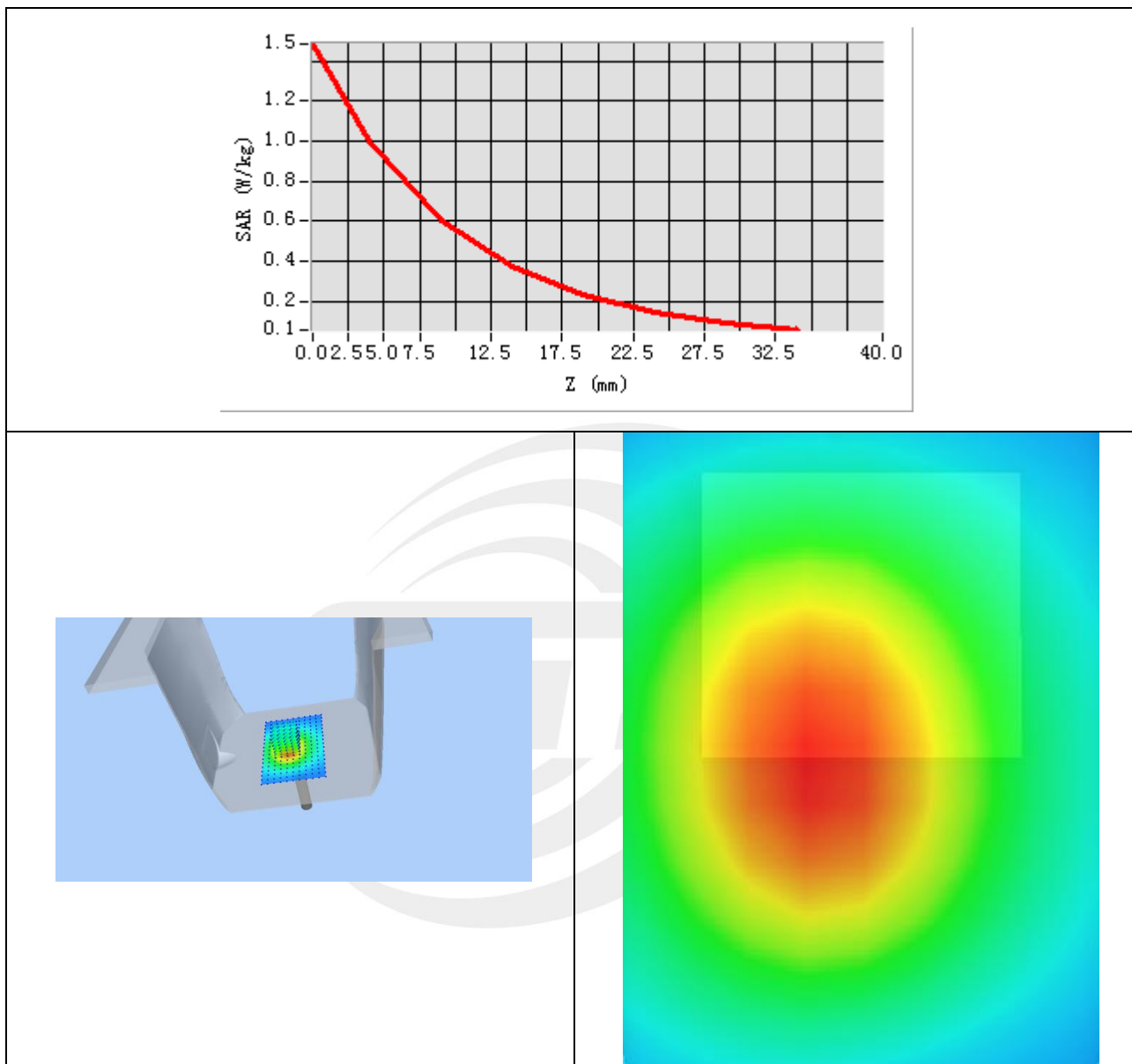
Phantom	Validation plane
Device Position	-
Band	835MHz
Channels	-
Signal	CW
Frequency (MHz)	835MHz
Relative permittivity	42.45
Conductivity (S/m)	0.90
Power drift (%)	0.07
Probe	SN 14/16 EP309
ConvF:	5.74
Crest factor:	1:1



Maximum location: X=-7.00, Y=-1.00

SAR 10g (W/Kg)	0.615073
SAR 1g (W/Kg)	0.957159

Z Axis Scan



System Performance Check Data(1800MHz)

Type: Phone measurement (Complete)

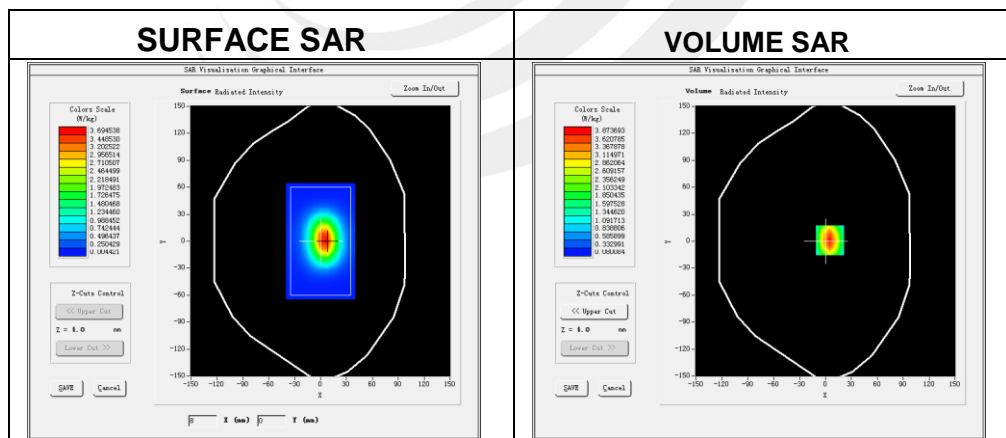
Area scan resolution: dx=8mm, dy=8mm

Zoom scan resolution: dx=8mm, dy=8mm, dz=5mm

Date of measurement: 2020-06-04

Experimental conditions.

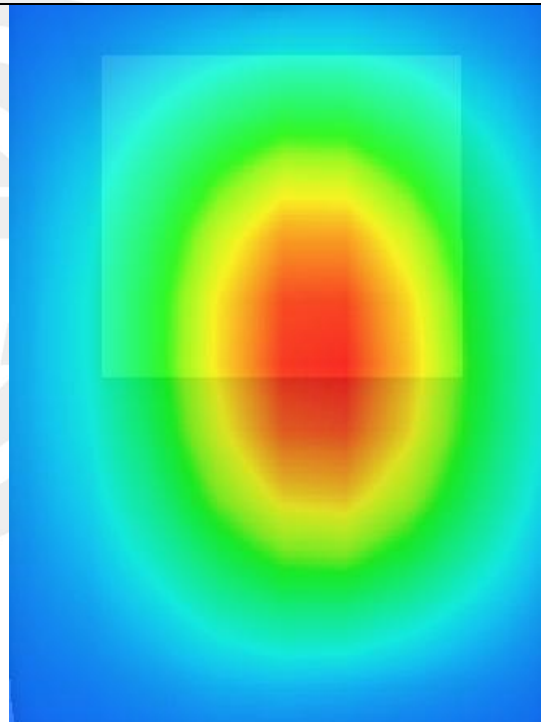
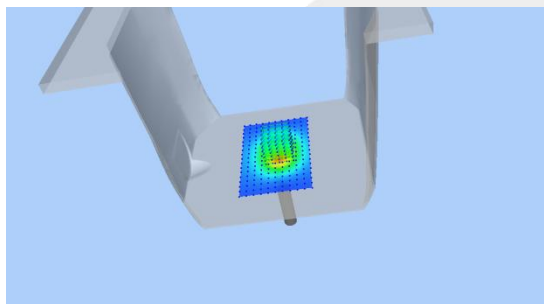
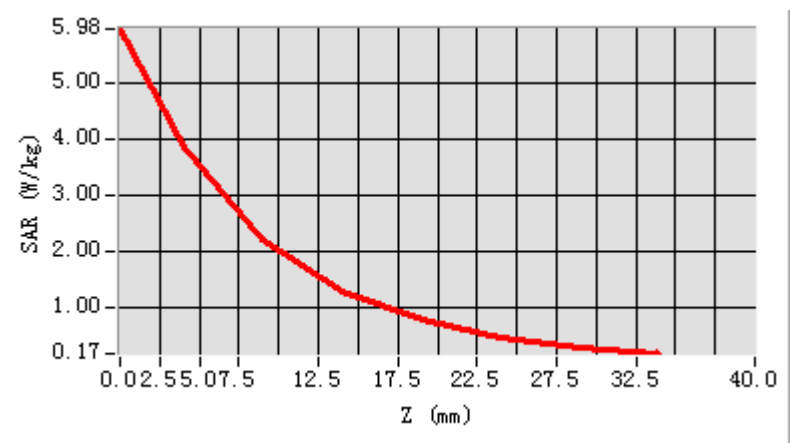
Phantom	Validation plane
Device Position	-
Band	1800MHz
Channels	-
Signal	CW
Frequency (MHz)	1800MHz
Relative permittivity	39.79
Conductivity (S/m)	1.42
Power drift (%)	0.23
Probe	SN 14/16 EP309
ConvF	4.69
Crest factor:	1:1



Maximum location: X=5.00, Y=1.00

SAR 10g (W/Kg)	2.021559
SAR 1g (W/Kg)	3.801051

Z Axis Scan



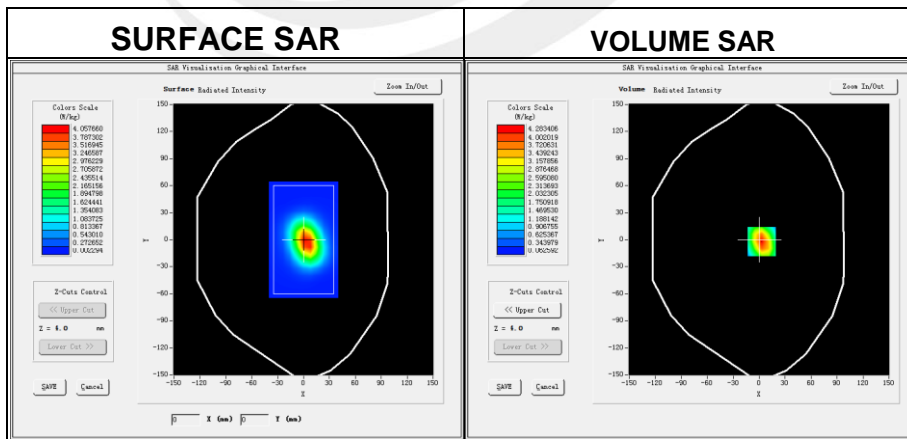


System Performance Check Data (1900MHz)

Type: Phone measurement (Complete)
 Area scan resolution: dx=8mm, dy=8mm
 Zoom scan resolution: dx=8mm, dy=8mm, dz=5mm
 Date of measurement: 2020-06-05
 Measurement duration: 14 minutes 12 seconds

Experimental conditions.

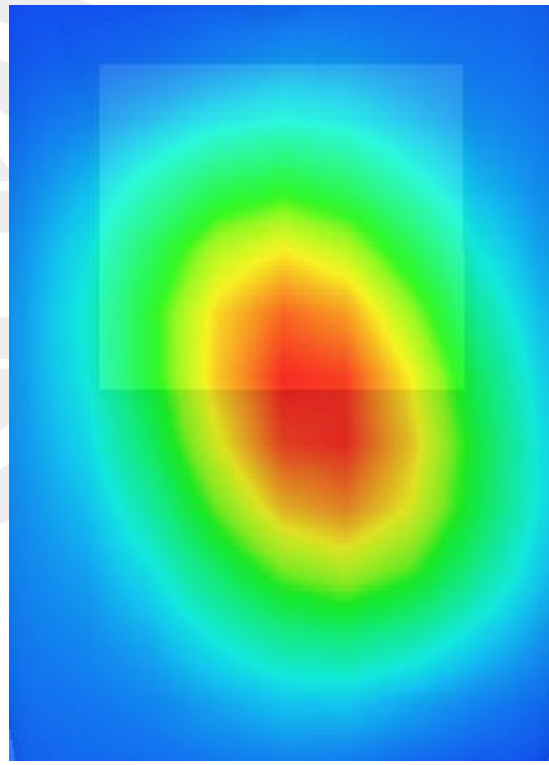
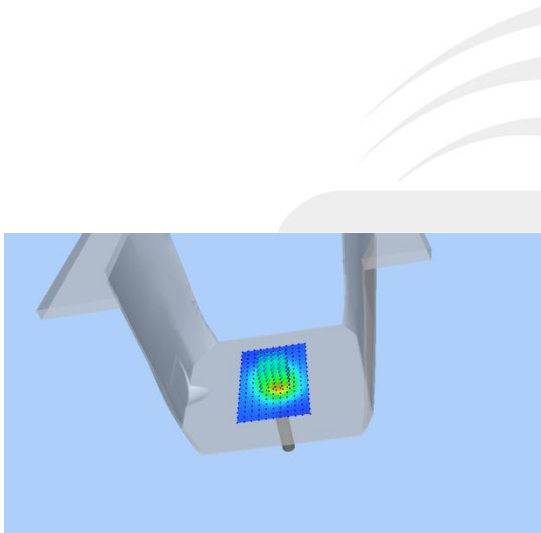
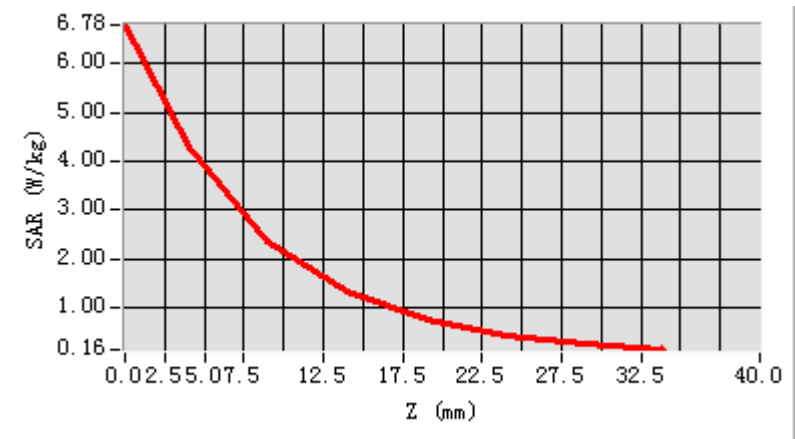
Phantom	Validation plane
Device Position	-
Band	1900MHz
Channels	-
Signal	CW
Frequency (MHz)	1900MHz
Relative permittivity	41.38
Conductivity (S/m)	1.42
Power drift (%)	0.46
Probe	SN 14/16 EP309
ConvF:	5.46
Crest factor:	1:1



Maximum location: X=3.00, Y=-2.00

SAR 10g (W/Kg)	2.014782
SAR 1g (W/Kg)	4.126385

Z Axis Scan

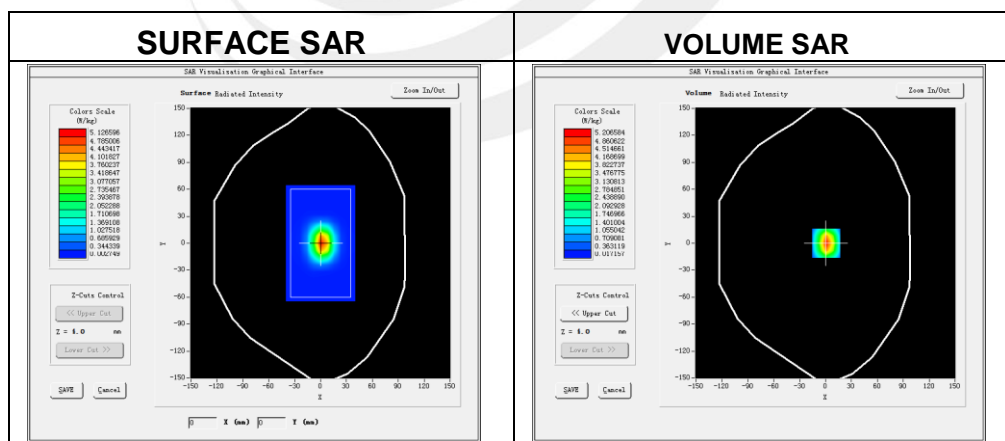


System Performance Check Data (2450MHz)

Type: Phone measurement (Complete)
 Area scan resolution: dx=8mm, dy=8mm
 Zoom scan resolution: dx=8mm, dy=8mm, dz=5mm
 Date of measurement: 2020-06-08
 Measurement duration: 13 minutes 51seconds

Experimental conditions.

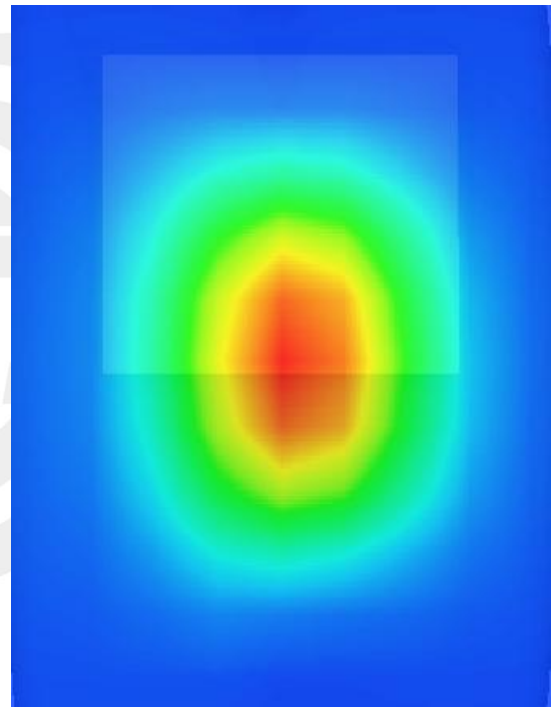
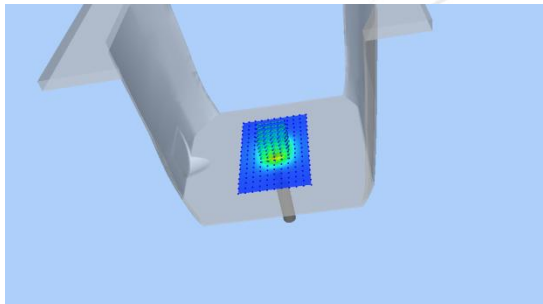
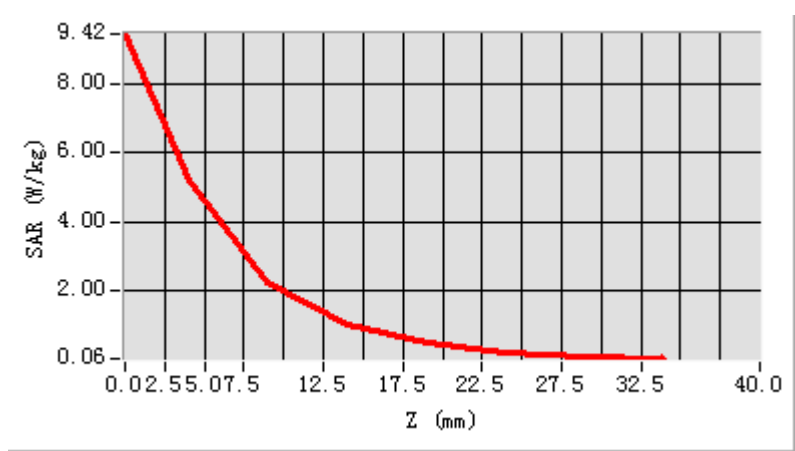
Device Position	Validation plane
Band	2450 MHz
Channels	-
Signal	CW
Frequency (MHz)	2450
Relative permittivity	39.09
Conductivity (S/m)	1.84
Power drift (%)	-0.38
Probe	SN 14/16 EP309
ConvF	5.09
Crest factor:	1:1



Maximum location: X=1.00, Y=0.00

SAR 10g (W/Kg)	2.481875
SAR 1g (W/Kg)	5.290266

Z Axis Scan



Appendix B. SAR Test Plots

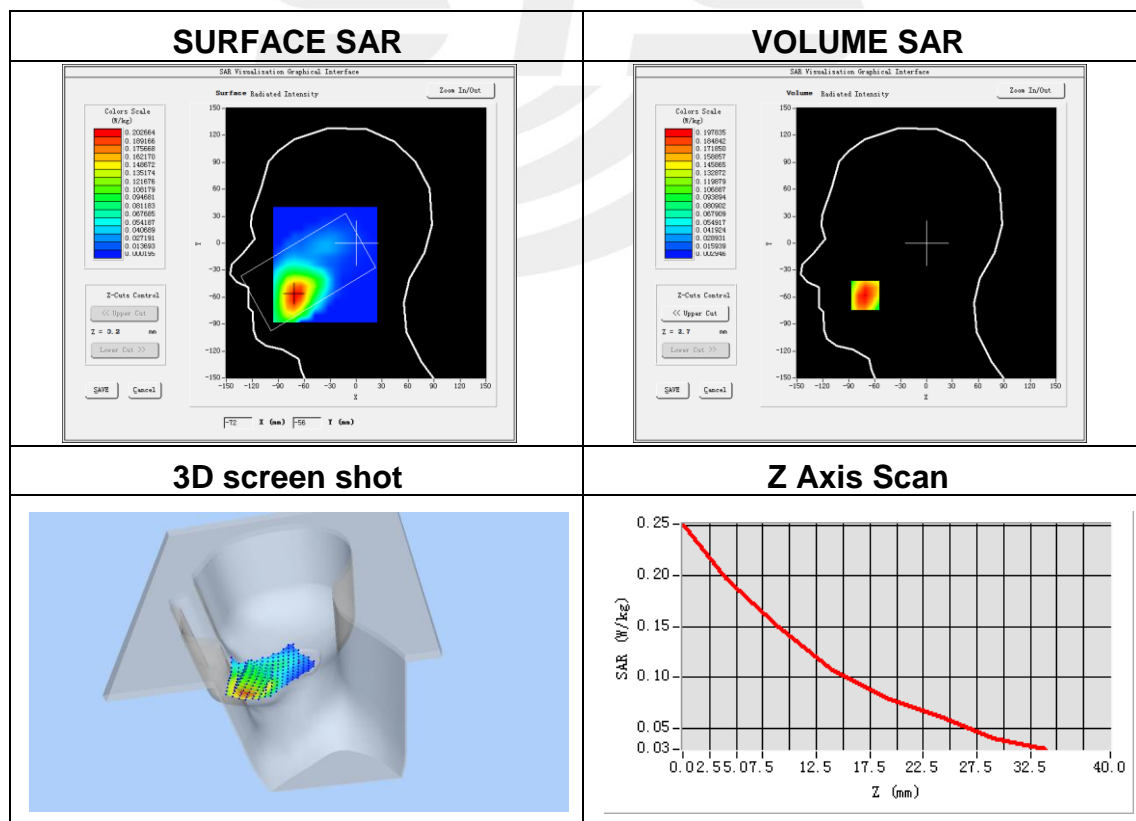
Plot 1: DUT: 4G phone; EUT Model: ezFlip

Test Date	2020-06-03
Probe	SN 14/16 EP309
ConvF	5.74
Area Scan	dx=8mm, dy=8mm, h= 5.00 mm
Zoom Scan	5x5x7, dx=8mm, dy=8mm, dz=5mm, Complete/ndx=8mm, dy=8mm, h= 5.00 mm
Phantom	Right head
Device Position	Cheek
Band	GPRS 850
Channels	Middle
Signal	Duty Cycle: 2.00 (Crest factor: 2.0)
Frequency (MHz)	836.6
Relative permittivity (real part)	42.42
Conductivity (S/m)	0.90

Maximum location: X=-71.00, Y=-58.00

SAR Peak: 0.26 W/kg

SAR 10g (W/Kg)	0.131845
SAR 1g (W/Kg)	0.193224



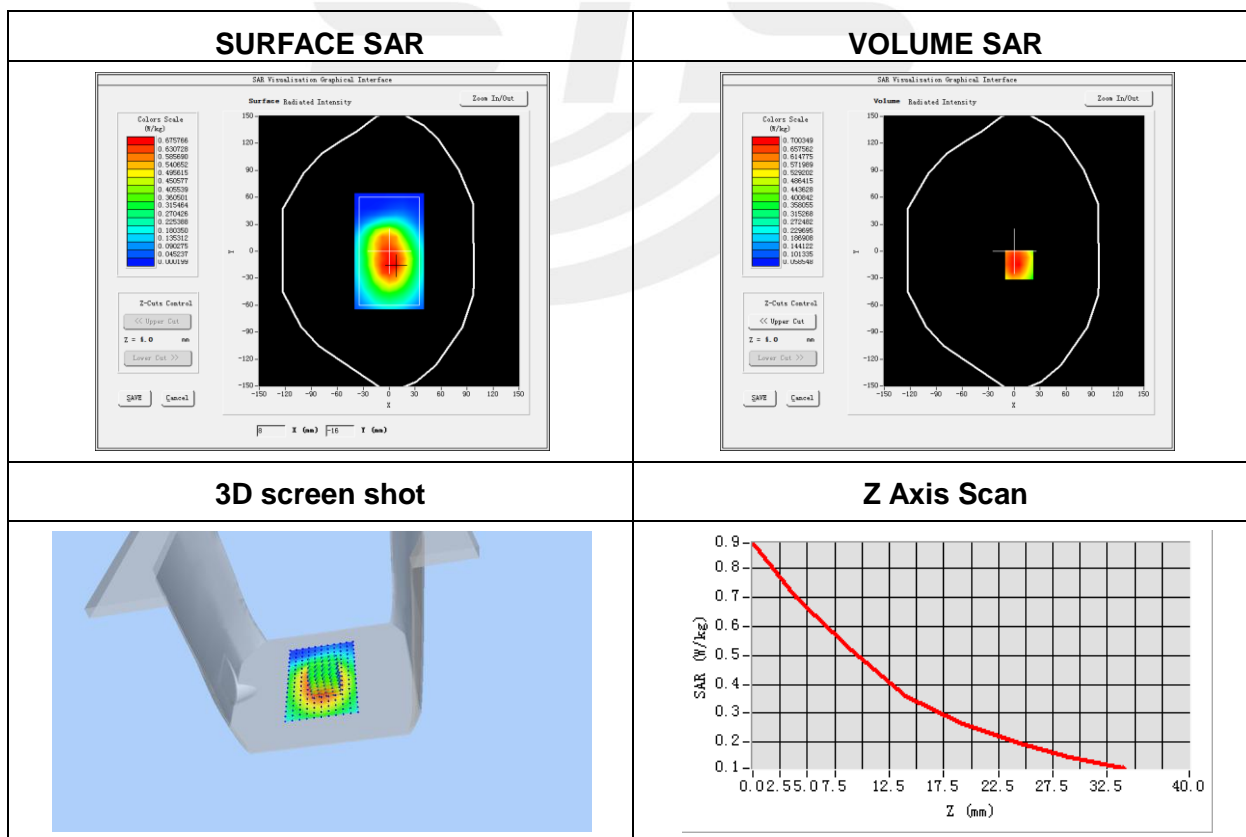
Plot 2: DUT: 4G phone; EUT Model: ezFlip

Test Date	2020-06-03
Probe	SN 14/16 EP309
ConvF	5.74
Area Scan	dx=8mm, dy=8mm, h= 5.00 mm
Zoom Scan	5x5x7, dx=8mm, dy=8mm, dz=5mm, Complete/ndx=8mm, dy=8mm, h= 5.00 mm
Phantom	Validation plane
Device Position	Back Side
Band	GPRS 850
Channels	Middle
Signal	Duty Cycle: 2.00 (Crest factor: 2.0)
Frequency (MHz)	836.6
Relative permittivity (real part)	42.42
Conductivity (S/m)	0.90

Maximum location: X=6.00, Y=-15.00

SAR Peak: 0.89 W/kg

SAR 10g (W/Kg)	0.472707
SAR 1g (W/Kg)	0.674353



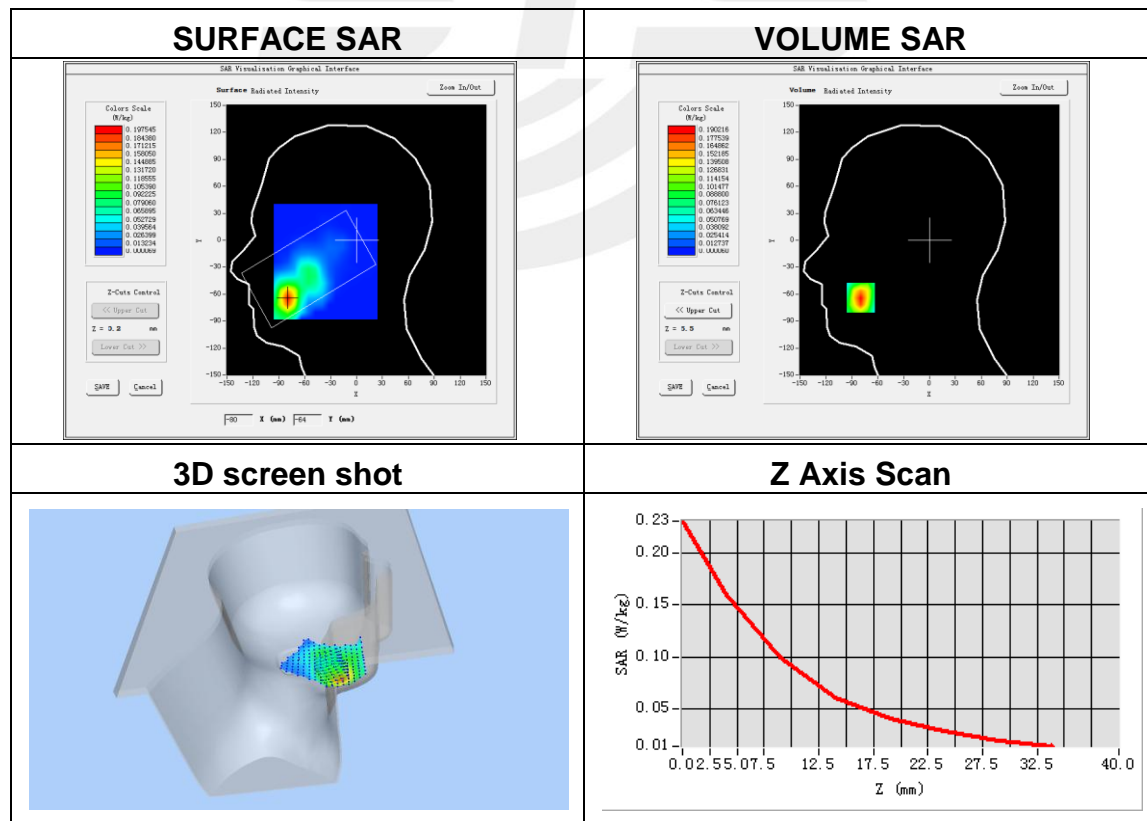
Plot 3: DUT: 4G phone; EUT Model: ezFlip

Test Date	2020-06-05
Probe	SN 14/16 EP309
ConvF	5.46
Area Scan	dx=8mm, dy=8mm, h= 5.00 mm
Zoom Scan	5x5x7, dx=8mm, dy=8mm, dz=5mm, Complete/ndx=8mm, dy=8mm, h= 5.00 mm
Phantom	Right head
Device Position	Cheek
Band	GPRS 1900
Channels	Low
Signal	Duty Cycle: 1:2.00 (Crest factor: 2.0)
Frequency (MHz)	1850.2
Relative permittivity (real part)	41.38
Conductivity (S/m)	1.42

Maximum location: X=-80.00, Y=-64.00

SAR Peak: 0.30 W/kg

SAR 10g (W/Kg)	0.092419
SAR 1g (W/Kg)	0.179499



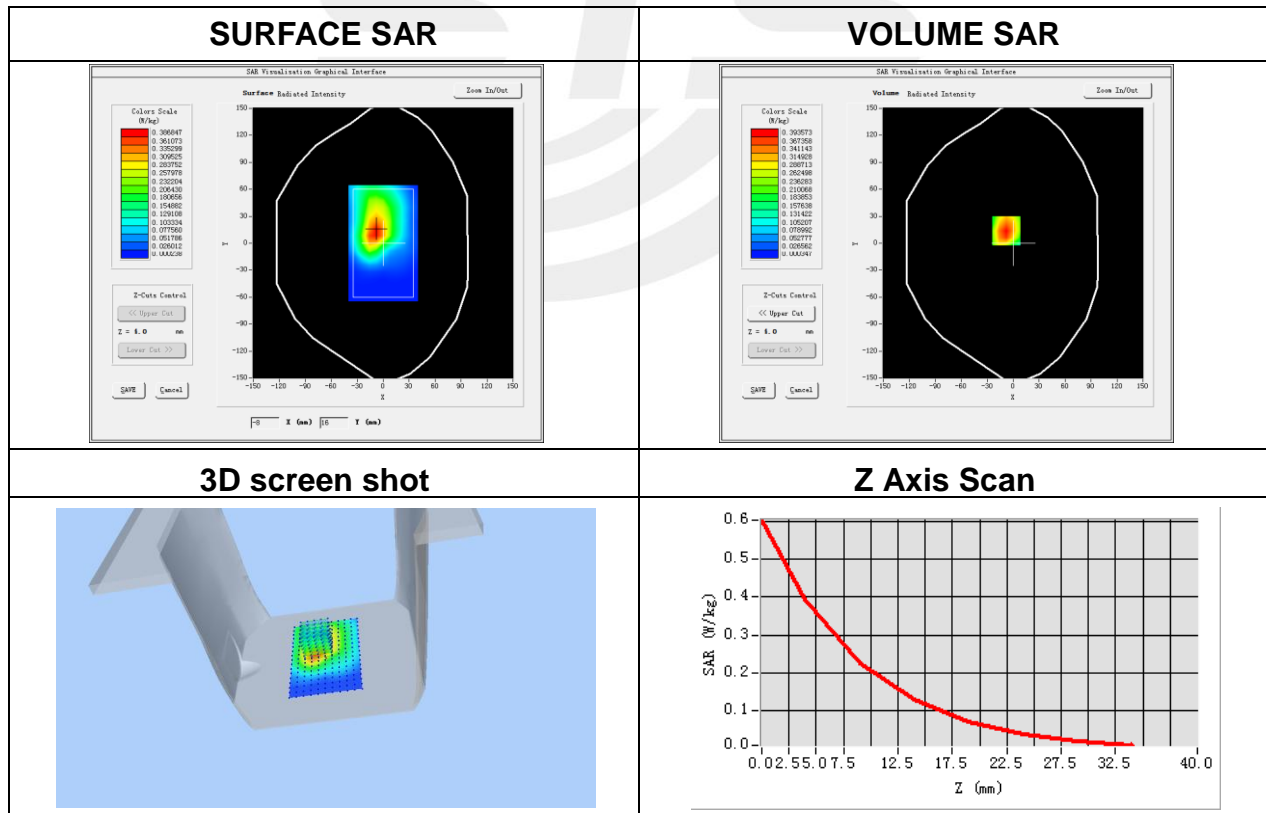
Plot 4: DUT: 4G phone; EUT Model: ezFlip

Test Date	2020-06-05
Probe	SN 14/16 EP309
ConvF	5.46
Area Scan	dx=8mm, dy=8mm, h= 5.00 mm
Zoom Scan	5x5x7, dx=8mm, dy=8mm, dz=5mm, Complete/ndx=8mm, dy=8mm, h= 5.00 mm
Phantom	Validation plane
Device Position	Back side
Band	GPRS 1900
Channels	Low
Signal	Duty Cycle: 1:2.00 (Crest factor: 2.0)
Frequency (MHz)	1850.2
Relative permittivity (real part)	41.38
Conductivity (S/m)	1.42

Maximum location: X=-8.00, Y=14.00

SAR Peak: 0.62 W/kg

SAR 10g (W/Kg)	0.204757
SAR 1g (W/Kg)	0.376433



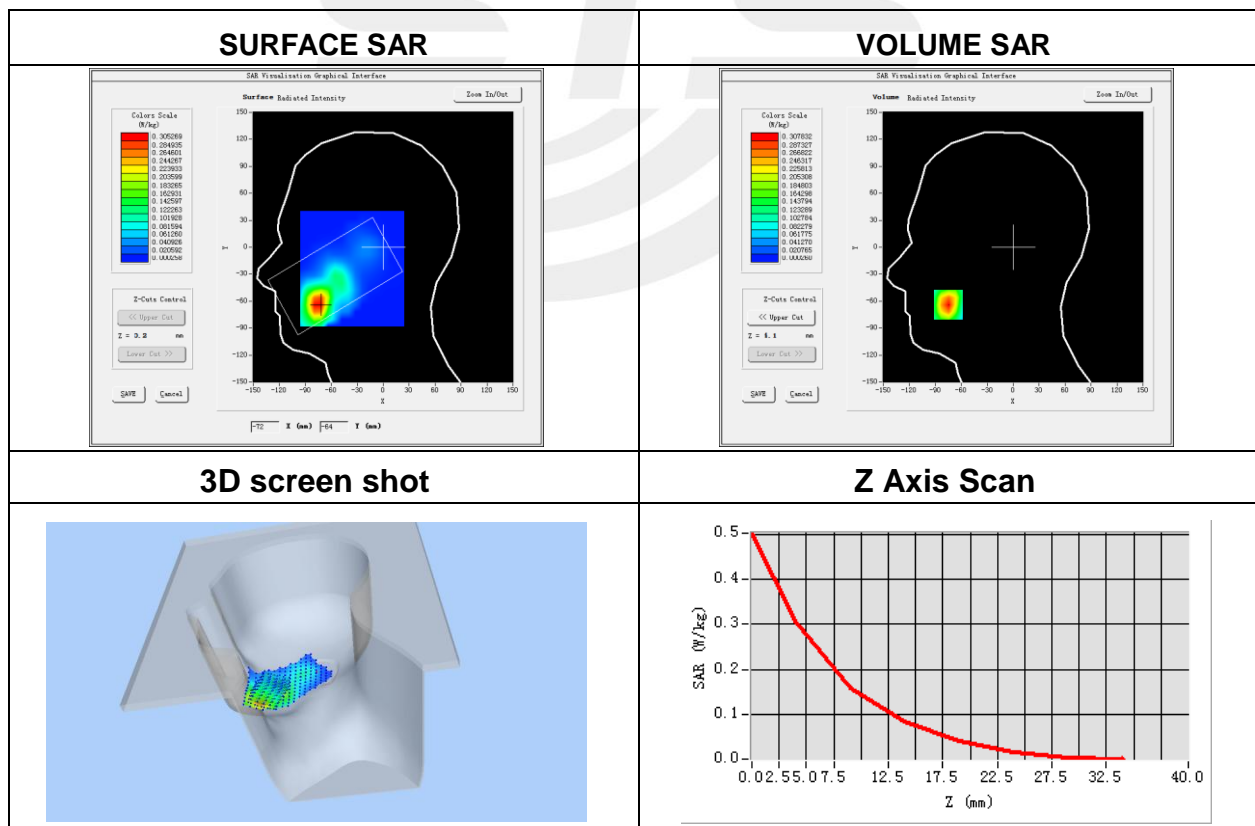
Plot 5: DUT: 4G phone; EUT Model: ezFlip

Test Date	2020-06-05
Probe	SN 14/16 EP309
ConvF	5.46
Area Scan	dx=8mm, dy=8mm, h= 5.00 mm
Zoom Scan	5x5x7, dx=8mm, dy=8mm, dz=5mm, Complete/ndx=8mm, dy=8mm, h= 5.00 mm
Phantom	Right head
Device Position	Cheek
Band	WCDMA II
Channels	Low
Signal	WCDMA (Crest factor: 1.0)
Frequency (MHz)	1852.4
Relative permittivity (real part)	41.38
Conductivity (S/m)	1.42

Maximum location: X=-75.00, Y=-64.00

SAR Peak: 0.50 W/kg

SAR 10g (W/Kg)	0.152142
SAR 1g (W/Kg)	0.297559



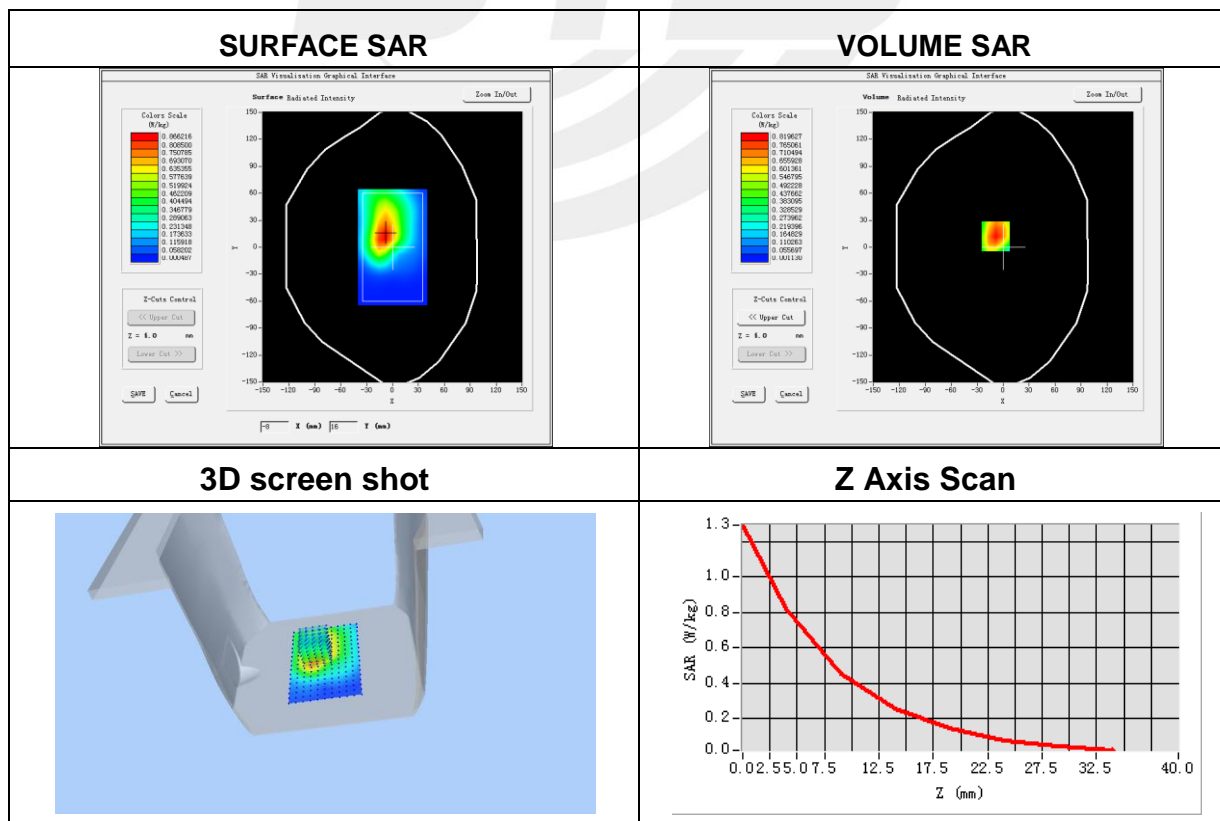
Plot 6: DUT: 4G phone; EUT Model: ezFlip

Test Date	2020-06-05
Probe	SN 14/16 EP309
ConvF	5.46
Area Scan	dx=8mm, dy=8mm, h= 5.00 mm
Zoom Scan	5x5x7, dx=8mm, dy=8mm, dz=5mm, Complete/ndx=8mm, dy=8mm, h= 5.00 mm
Phantom	Validation plane
Device Position	Back side
Band	WCDMA II
Channels	Low
Signal	WCDMA (Crest factor: 1.0)
Frequency (MHz)	1852.4
Relative permittivity (real part)	41.38
Conductivity (S/m)	1.42

Maximum location: X=-9.00, Y=12.00

SAR Peak: 1.28 W/kg

SAR 10g (W/Kg)	0.438014
SAR 1g (W/Kg)	0.793854



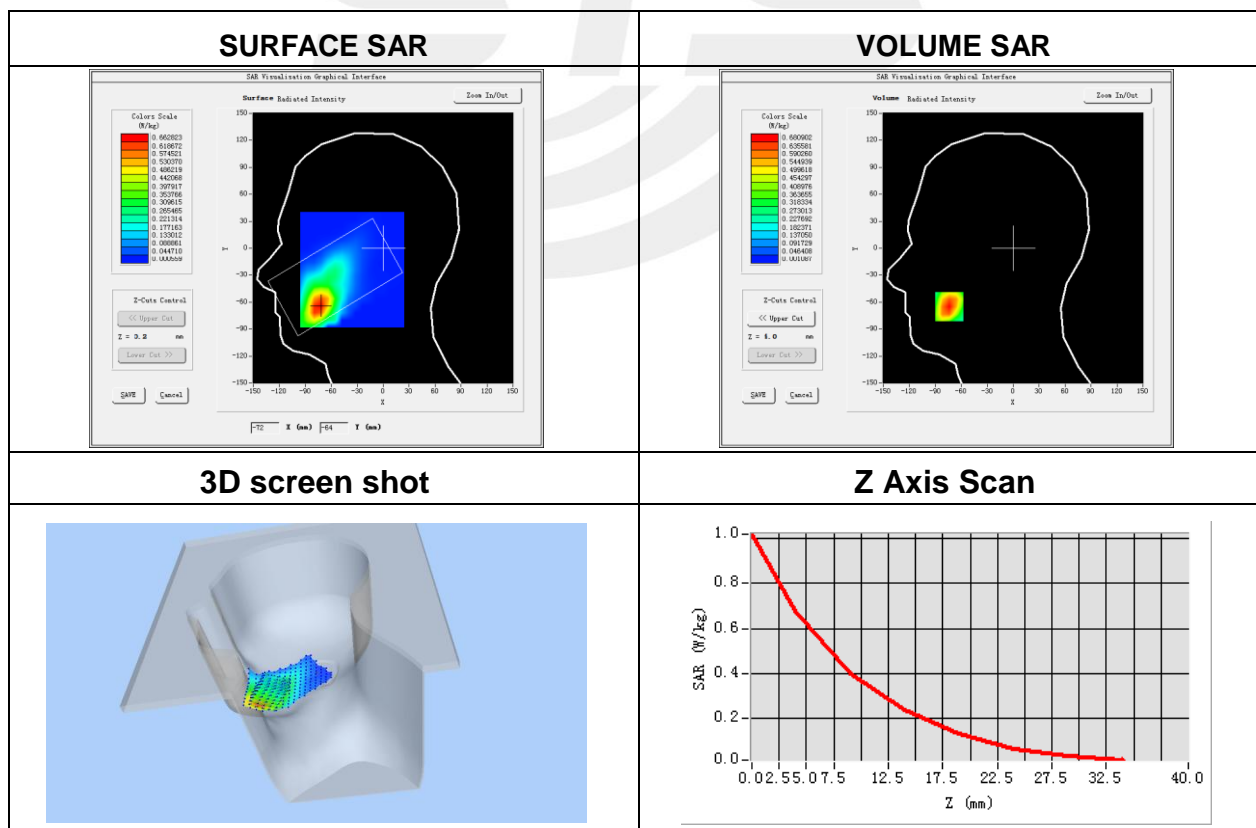
Plot 7: DUT: 4G phone; EUT Model: ezFlip

Test Date	2020-06-04
Probe	SN 14/16 EP309
ConvF	4.69
Area Scan	dx=8mm, dy=8mm, h= 5.00 mm
Zoom Scan	5x5x7, dx=8mm, dy=8mm, dz=5mm, Complete/ndx=8mm, dy=8mm, h= 5.00 mm
Phantom	Right head
Device Position	Cheek
Band	WCDMA IV
Channels	Middle
Signal	WCDMA (Crest factor: 1.0)
Frequency (MHz)	1740
Relative permittivity (real part)	39.79
Conductivity (S/m)	1.42

Maximum location: X=-74.00, Y=-65.00

SAR Peak: 1.02 W/kg

SAR 10g (W/Kg)	0.365925
SAR 1g (W/Kg)	0.654663



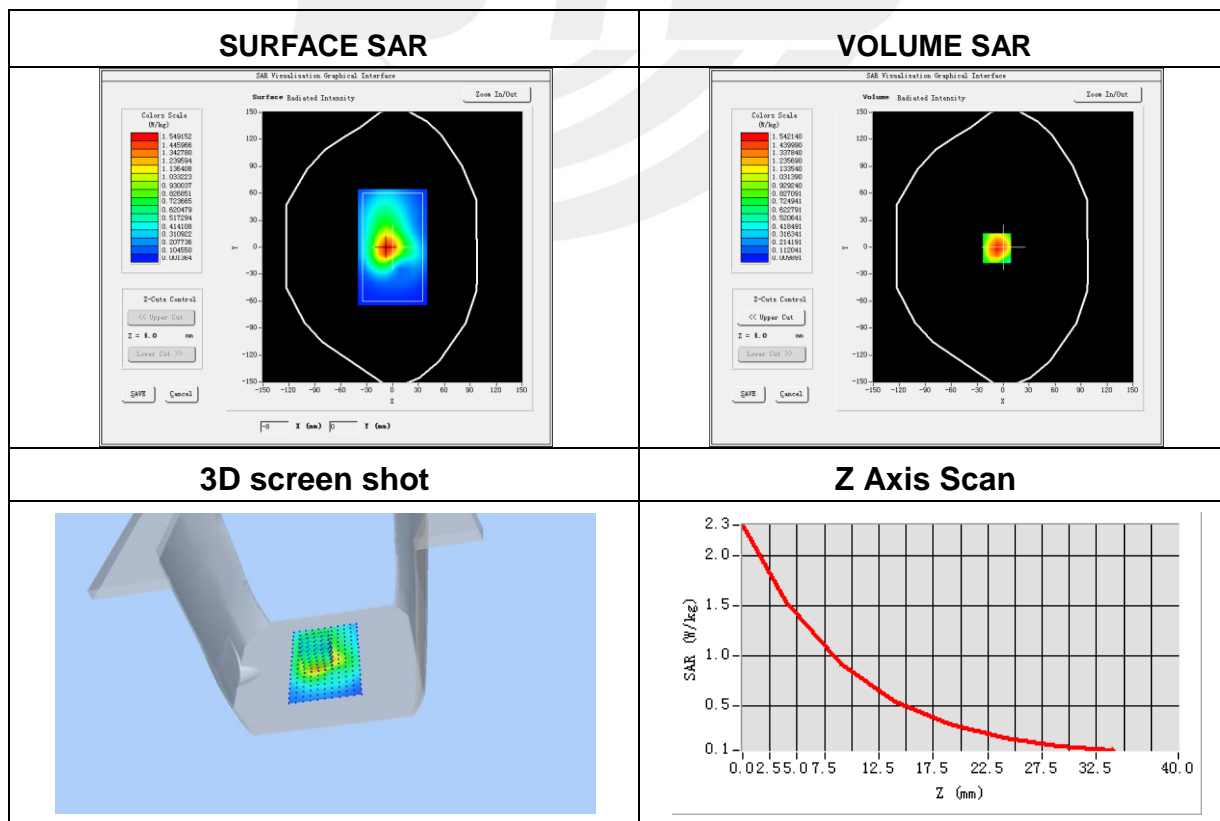
Plot 8: DUT: 4G phone; EUT Model: ezFlip

Test Date	2020-06-04
Probe	SN 14/16 EP309
ConvF	4.69
Area Scan	dx=8mm, dy=8mm, h= 5.00 mm
Zoom Scan	5x5x7, dx=8mm, dy=8mm, dz=5mm, Complete/ndx=8mm, dy=8mm, h= 5.00 mm
Phantom	Validation plane
Device Position	Back side
Band	WCDMA IV
Channels	Middle
Signal	WCDMA (Crest factor: 1.0)
Frequency (MHz)	1740
Relative permittivity (real part)	39.79
Conductivity (S/m)	1.42

Maximum location: X=-7.00, Y=-1.00

SAR Peak: 2.32 W/kg

SAR 10g (W/Kg)	0.821996
SAR 1g (W/Kg)	1.473770



Plot 9: DUT: 4G phone; EUT Model: ezFlip

Test Date	2020-06-03
Probe	SN 14/16 EP309
ConvF	5.74
Area Scan	dx=8mm, dy=8mm, h= 5.00 mm
Zoom Scan	5x5x7, dx=8mm, dy=8mm, dz=5mm, Complete/ndx=8mm, dy=8mm, h= 5.00 mm
Phantom	Right head
Device Position	Cheek
Band	WCDMA V
Channels	High
Signal	WCDMA (Crest factor: 1.0)
Frequency (MHz)	846.6
Relative permittivity (real part)	42.45
Conductivity (S/m)	0.90

Maximum location: X=-69.00, Y=-58.00

SAR Peak: 0.16 W/kg

SAR 10g (W/Kg)	0.077931
SAR 1g (W/Kg)	0.113799



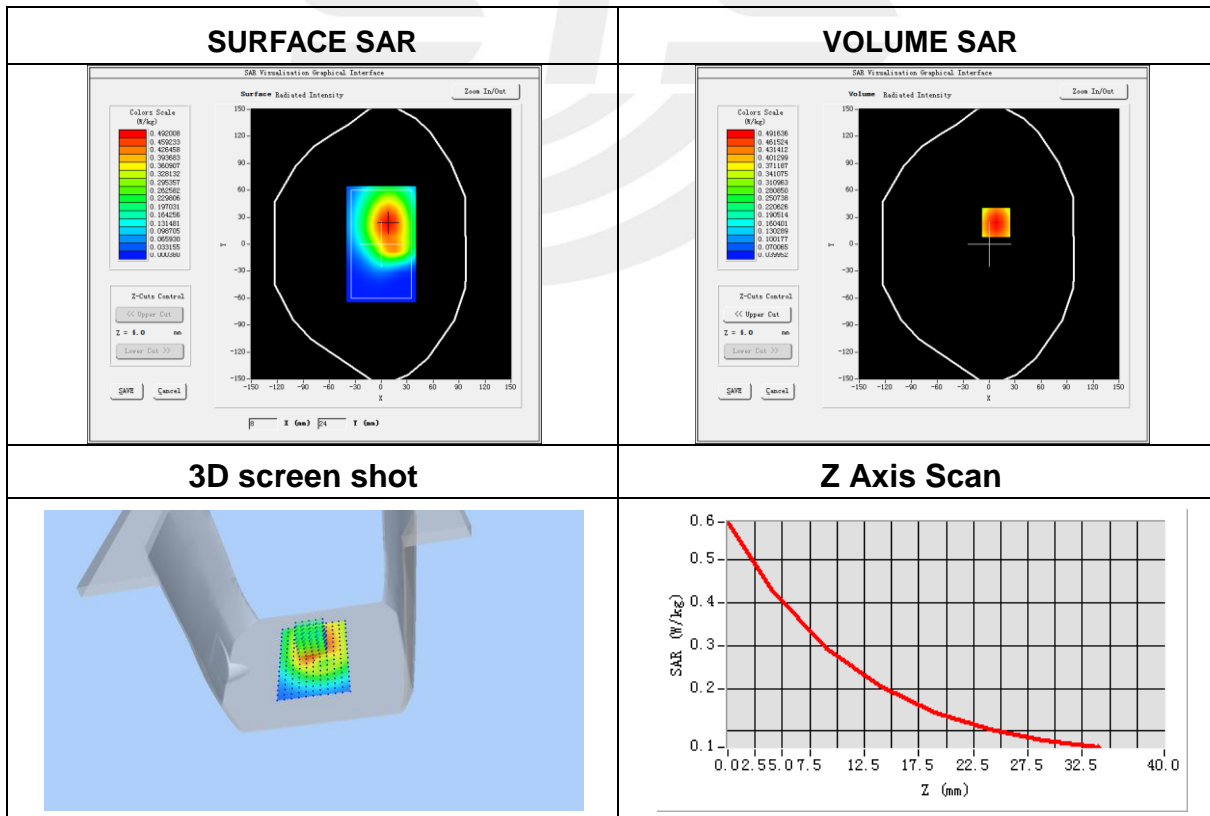
Plot 10: DUT: 4G phone; EUT Model: ezFlip

Test Date	2020-06-03
Probe	SN 14/16 EP309
ConvF	5.74
Area Scan	dx=8mm, dy=8mm, h= 5.00 mm
Zoom Scan	5x5x7, dx=8mm, dy=8mm, dz=5mm, Complete/ndx=8mm, dy=8mm, h= 5.00 mm
Phantom	Validation plane
Device Position	Back Side
Band	WCDMA V
Channels	High
Signal	WCDMA (Crest factor: 1.0)
Frequency (MHz)	846.6
Relative permittivity (real part)	42.45
Conductivity (S/m)	0.90

Maximum location: X=8.00, Y=24.00

SAR Peak: 0.62 W/kg

SAR 10g (W/Kg)	0.334858
SAR 1g (W/Kg)	0.475801

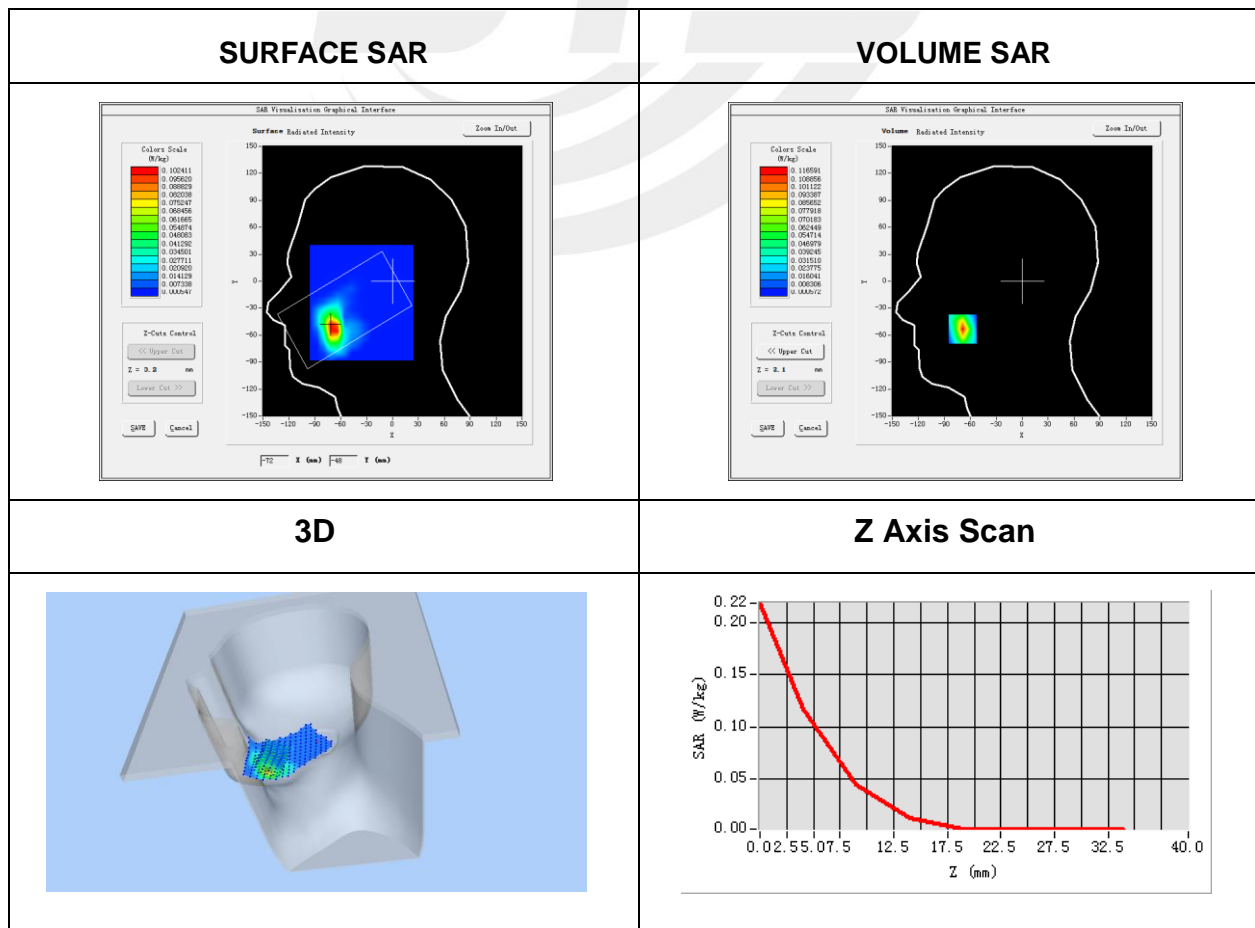


Plot 11: DUT:4G phone; EUT Model: ezFlip

Test Date	2020-06-08
Probe	SN 14/16 EP309
ConvF	5.09
Area Scan	dx=8mm, dy=8mm, h= 5.00 mm
Zoom Scan	5x5x7, dx=8mm, dy=8mm, dz=5mm, Complete/ndx=8mm, dy=8mm, h= 5.00 mm
Phantom	Right head
Device Position	Cheek
Band	IEEE 802.11b ISM
Channels	Middle
Signal	IEEE802.b (Crest factor: 1.0)
Frequency (MHz)	2437
Relative permittivity (real part)	39.09
Conductivity (S/m)	1.84

Maximum location: X=-69.00, Y=-53.00
SAR Peak: 0.22 W/kg

SAR 10g (W/Kg)	0.039265
SAR 1g (W/Kg)	0.104372

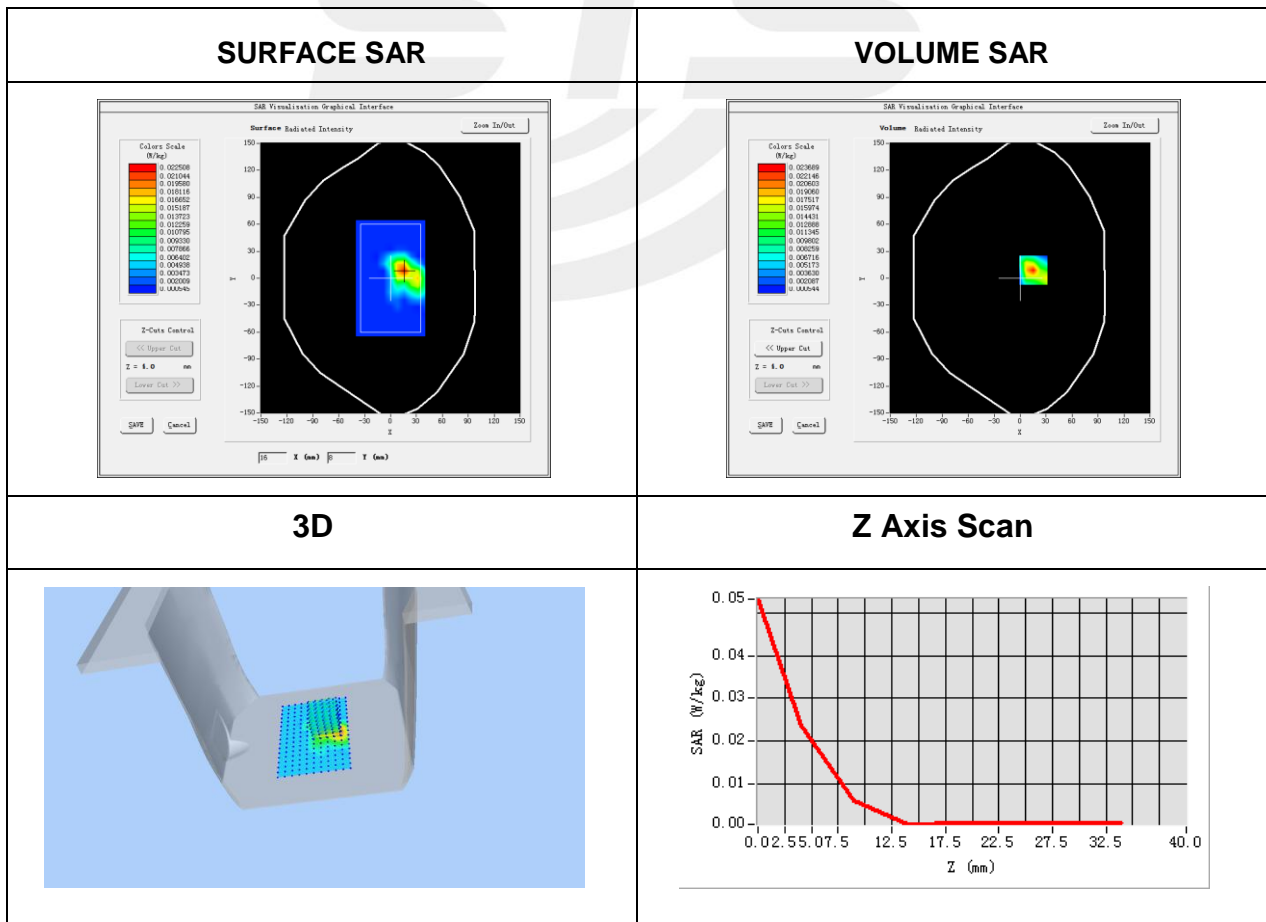


Plot 12: DUT: 4G phone; EUT Model: ezFlip

Test Date	2020-06-08
Probe	SN 14/16 EP309
ConvF	5.09
Area Scan	dx=8mm, dy=8mm, h= 5.00 mm
Zoom Scan	5x5x7, dx=8mm, dy=8mm, dz=5mm, Complete/ndx=8mm, dy=8mm, h= 5.00 mm
Phantom	Validation plane
Device Position	Back Side
Band	IEEE 802.11b ISM
Channels	Middle
Signal	IEEE802.b (Crest factor: 1.0)
Frequency (MHz)	2437
Relative permittivity (real part)	39.09
Conductivity (S/m)	1.84

Maximum location: X=15.00, Y=9.00
SAR Peak: 0.05 W/kg

SAR 10g (W/Kg)	0.008195
SAR 1g (W/Kg)	0.023083



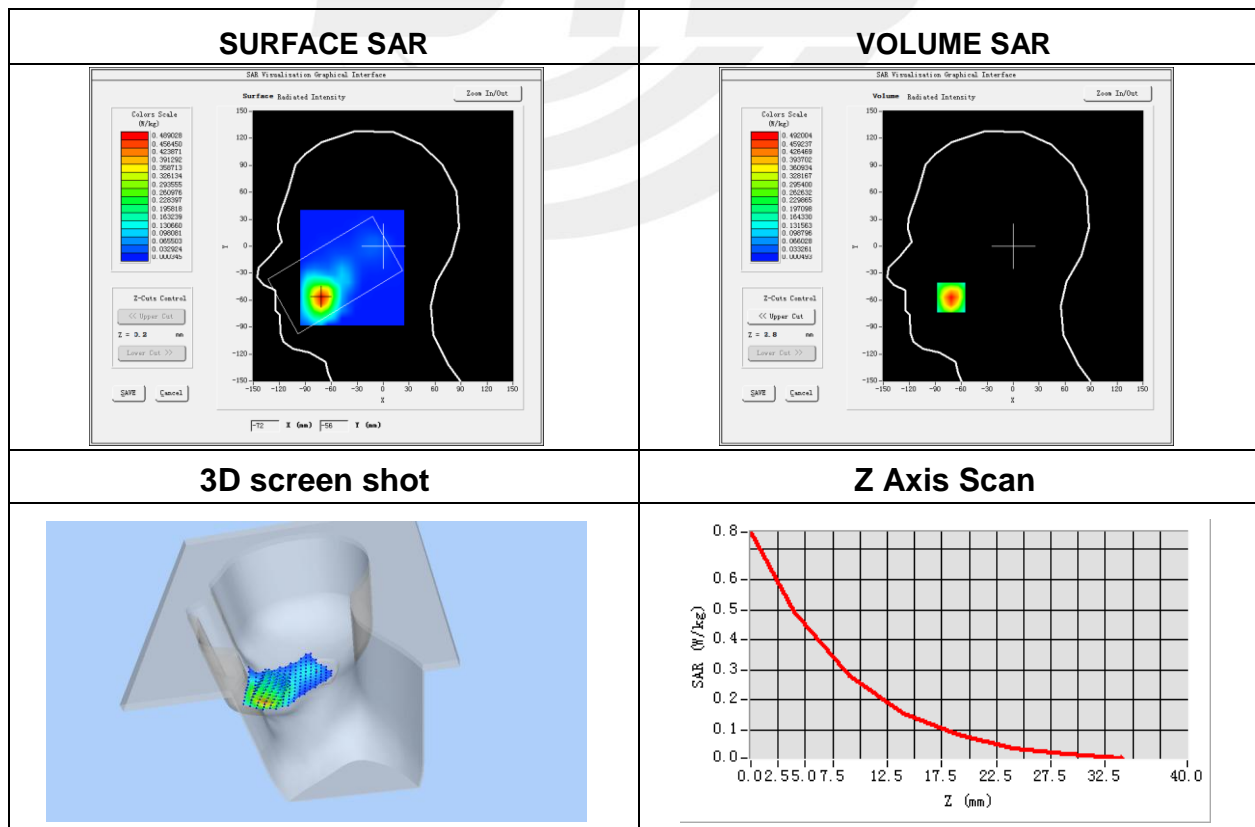
Plot 13: DUT: 4G phone; EUT Model: ezFlip

Test Date	2020-06-05
Probe	SN 14/16 EP309
ConvF	5.46
Area Scan	dx=8mm, dy=8mm, h= 5.00 mm
Zoom Scan	5x5x7, dx=8mm, dy=8mm, dz=5mm, Complete/ndx=8mm, dy=8mm, h= 5.00 mm
Phantom	Right head
Device Position	Cheek
Band	LTE Band 2 (RB 1)
Channels	Middle
Signal	LTE (Crest factor: 1.0)
Frequency (MHz)	1880
Relative permittivity (real part)	39.79
Conductivity (S/m)	1.42

Maximum location: X=-72.00, Y=-57.00

SAR Peak: 0.76 W/kg

SAR 10g (W/Kg)	0.246205
SAR 1g (W/Kg)	0.466306



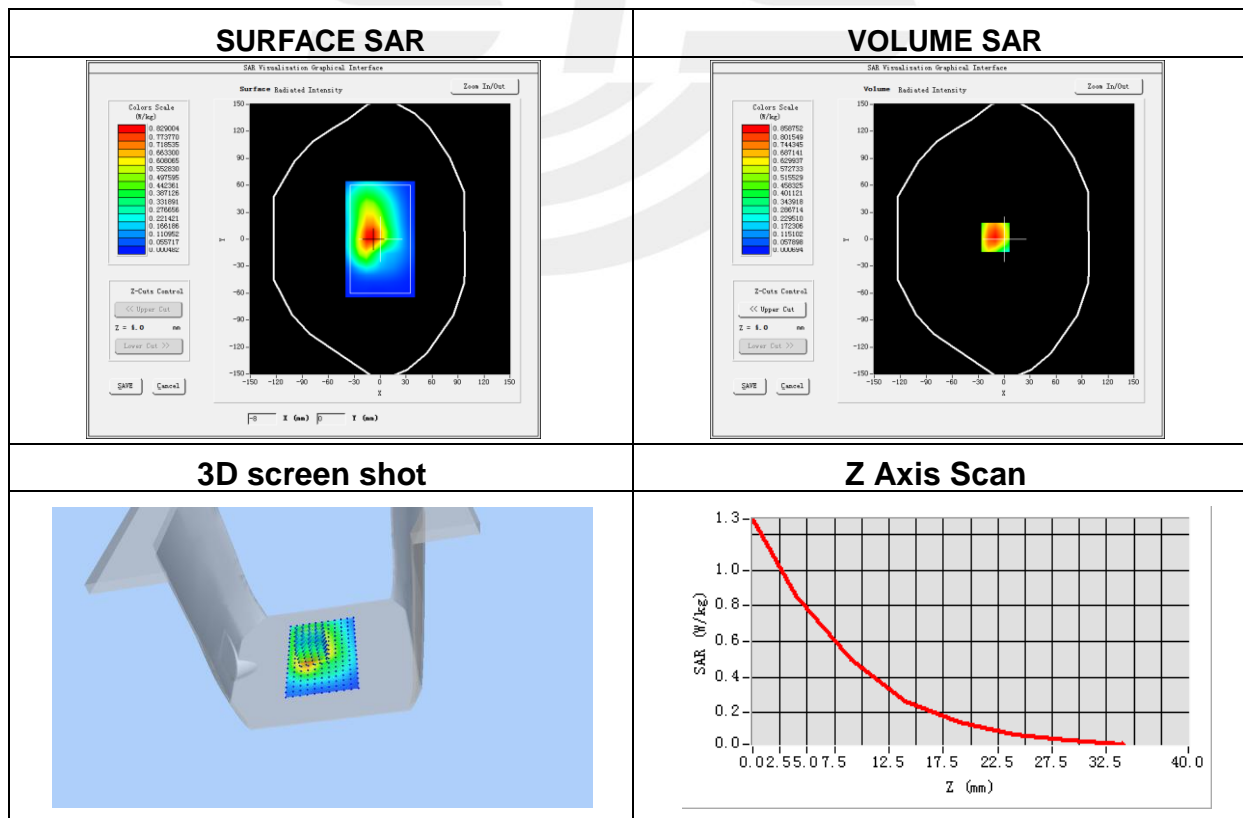
Plot 14: DUT: 4G phone; EUT Model: ezFlip

Test Date	2020-06-05
Probe	SN 14/16 EP309
ConvF	5.46
Area Scan	dx=8mm, dy=8mm, h= 5.00 mm
Zoom Scan	5x5x7, dx=8mm, dy=8mm, dz=5mm, Complete/ndx=8mm, dy=8mm, h= 5.00 mm
Phantom	Validation plane
Device Position	Back Side
Band	LTE Band 2(RB 1)
Channels	Middle
Signal	LTE (Crest factor: 1.0)
Frequency (MHz)	1880
Relative permittivity (real part)	39.79
Conductivity (S/m)	1.42

Maximum location: X=-10.00, Y=2.00

SAR Peak: 1.30 W/kg

SAR 10g (W/Kg)	0.453604
SAR 1g (W/Kg)	0.815316



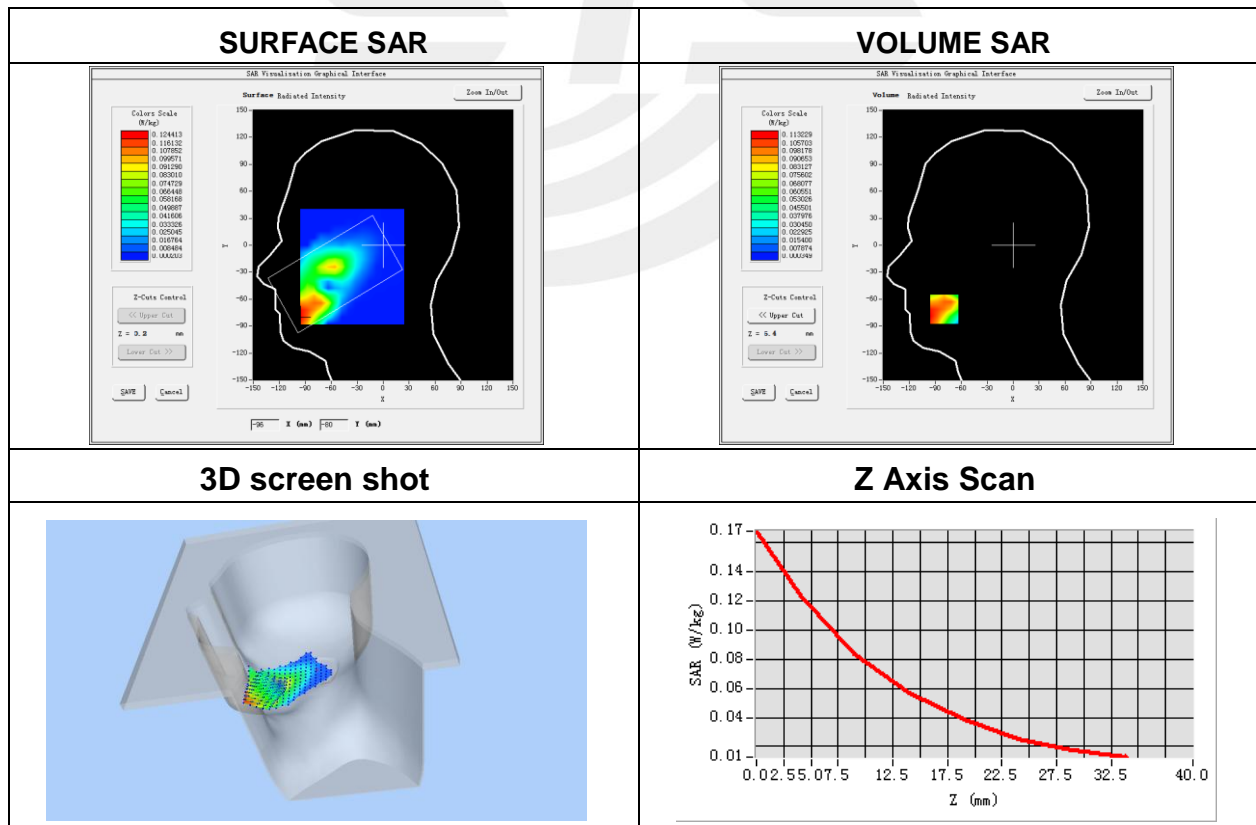
Plot 15: DUT: 4G phone; EUT Model: ezFlip

Test Date	2020-06-03
Probe	SN 14/16 EP309
ConvF	5.74
Area Scan	dx=8mm, dy=8mm, h= 5.00 mm
Zoom Scan	5x5x7, dx=8mm, dy=8mm, dz=5mm, Complete/ndx=8mm, dy=8mm, h= 5.00 mm
Phantom	Right head
Device Position	Cheek
Band	LTE Band 5 (RB 1)
Channels	High
Signal	LTE (Crest factor: 1.0)
Frequency (MHz)	844.0
Relative permittivity (real part)	42.45
Conductivity (S/m)	0.90

Maximum location: X=-80.00, Y=-71.00

SAR Peak: 0.17 W/kg

SAR 10g (W/Kg)	0.071829
SAR 1g (W/Kg)	0.109402



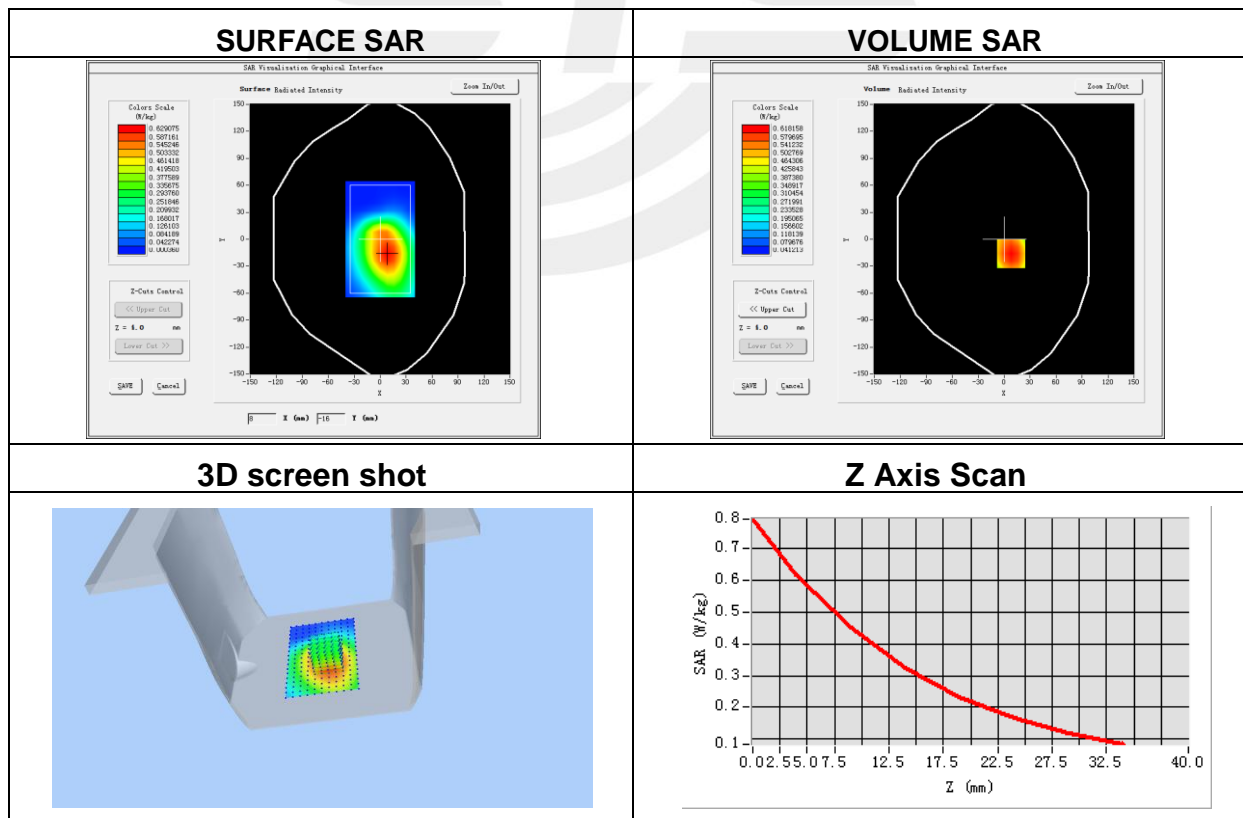
Plot 16: DUT: 4G phone; EUT Model: ezFlip

Test Date	2020-06-03
Probe	SN 14/16 EP309
ConvF	5.74
Area Scan	dx=8mm, dy=8mm, h= 5.00 mm
Zoom Scan	5x5x7, dx=8mm, dy=8mm, dz=5mm, Complete/ndx=8mm, dy=8mm, h= 5.00 mm
Phantom	Validation plane
Device Position	Back Side
Band	LTE Band 5 (RB 1)
Channels	High
Signal	LTE (Crest factor: 1.0)
Frequency (MHz)	844.0
Relative permittivity (real part)	42.45
Conductivity (S/m)	0.90

Maximum location: X=8.00, Y=-16.00

SAR Peak: 0.80 W/kg

SAR 10g (W/Kg)	0.413334
SAR 1g (W/Kg)	0.598537



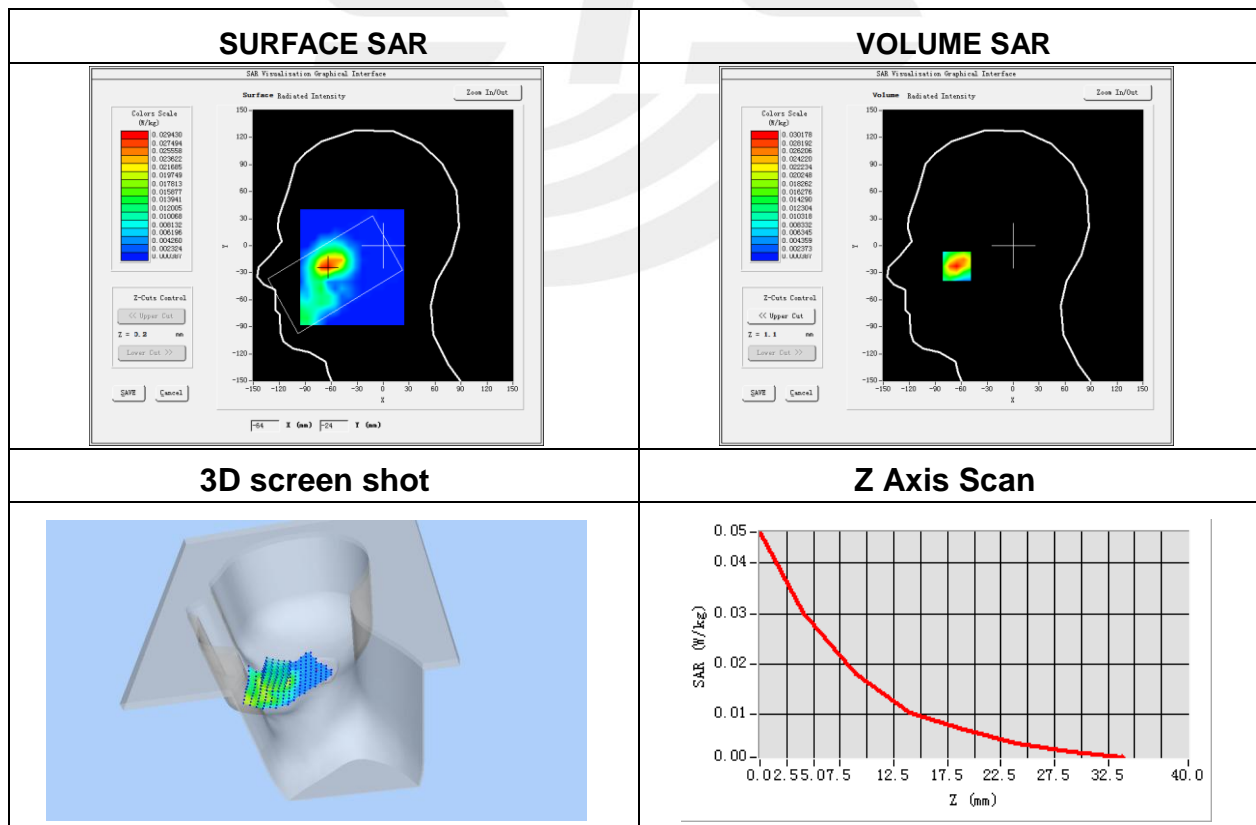
Plot 17: DUT: 4G phone; EUT Model: ezFlip

Test Date	2020-06-02
Probe	SN 14/16 EP309
ConvF	5.11
Area Scan	dx=8mm, dy=8mm, h= 5.00 mm
Zoom Scan	5x5x7, dx=8mm, dy=8mm, dz=5mm, Complete/ndx=8mm, dy=8mm, h= 5.00 mm
Phantom	Right head
Device Position	Cheek
Band	LTE Band 12 (RB 1)
Channels	Middle
Signal	LTE (Crest factor: 1.0)
Frequency (MHz)	707.5
Relative permittivity (real part)	42.47
Conductivity (S/m)	0.92

Maximum location: X=-65.00, Y=-23.00

SAR Peak: 0.05 W/kg

SAR 10g (W/Kg)	0.015418
SAR 1g (W/Kg)	0.028857



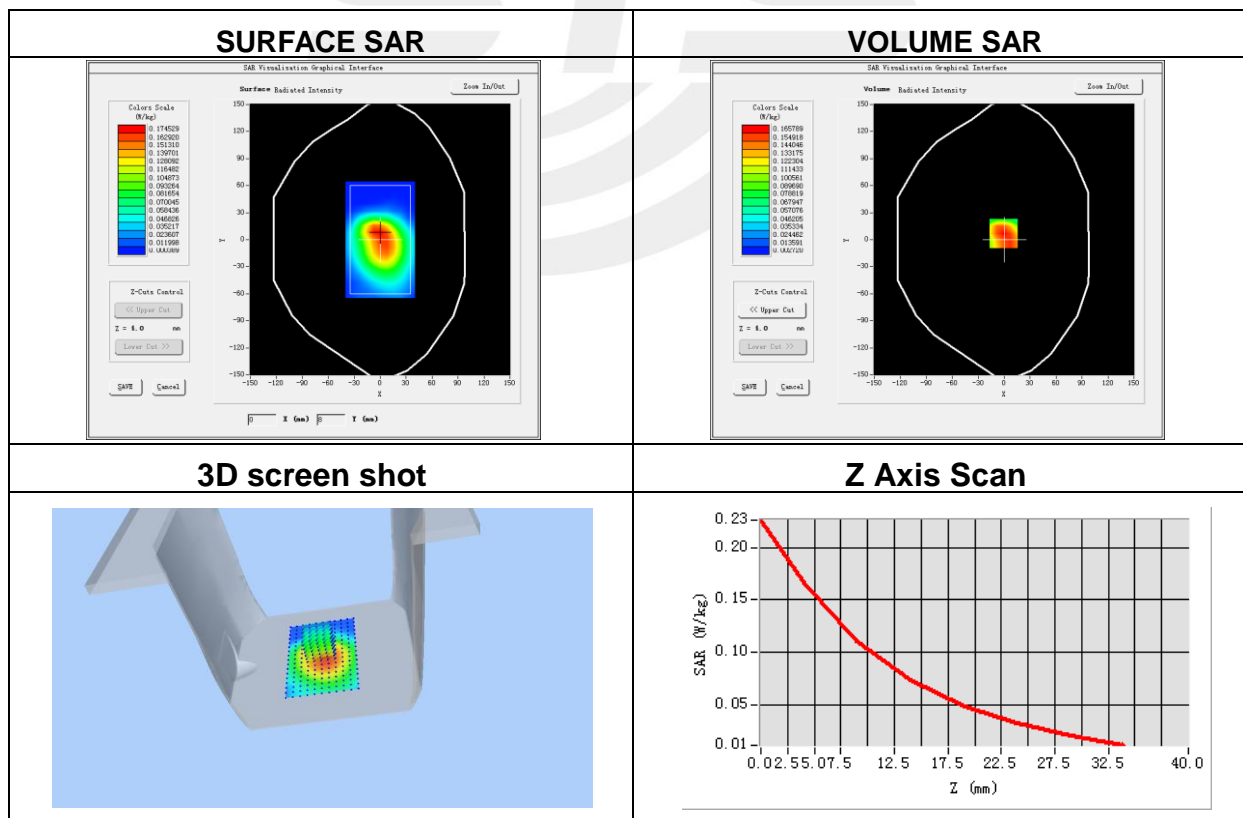
Plot 18: DUT: 4G phone; EUT Model: ezFlip

Test Date	2020-06-02
Probe	SN 14/16 EP309
ConvF	5.11
Area Scan	dx=8mm, dy=8mm, h= 5.00 mm
Zoom Scan	5x5x7, dx=8mm, dy=8mm, dz=5mm, Complete/ndx=8mm, dy=8mm, h= 5.00 mm
Phantom	Validation plane
Device Position	Back Side
Band	LTE Band 12 (RB 1)
Channels	Middle
Signal	LTE (Crest factor: 1.0)
Frequency (MHz)	707.5
Relative permittivity (real part)	42.47
Conductivity (S/m)	0.92

Maximum location: X=-1.00, Y=7.00

SAR Peak: 0.24 W/kg

SAR 10g (W/Kg)	0.102259
SAR 1g (W/Kg)	0.161913



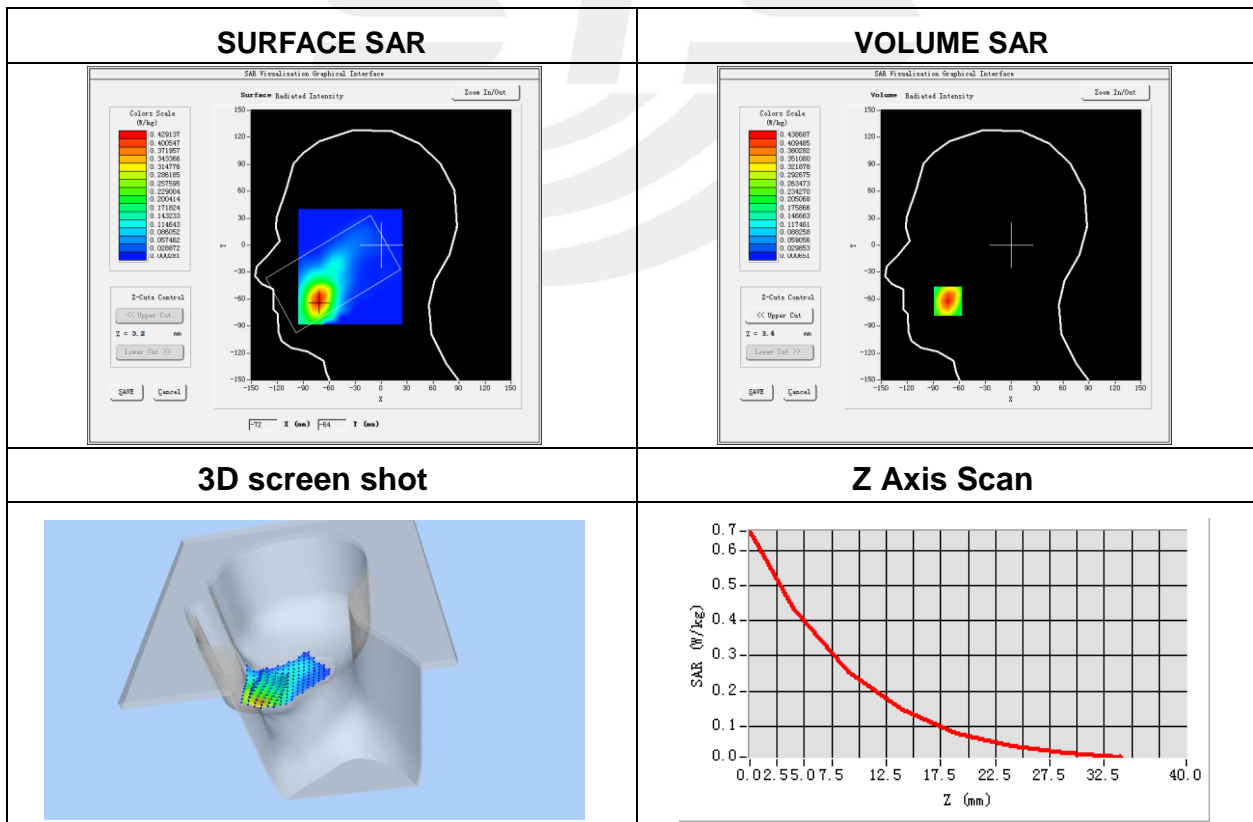
Plot 19: DUT: 4G phone; EUT Model: ezFlip

Test Date	2020-06-04
Probe	SN 14/16 EP309
ConvF	4.69
Area Scan	dx=8mm, dy=8mm, h= 5.00 mm
Zoom Scan	5x5x7, dx=8mm, dy=8mm, dz=5mm, Complete/ndx=8mm, dy=8mm, h= 5.00 mm
Phantom	Right head
Device Position	Cheek
Band	LTE Band 66 (RB 1)
Channels	High
Signal	LTE (Crest factor: 1.0)
Frequency (MHz)	1770
Relative permittivity (real part)	39.79
Conductivity (S/m)	1.42

Maximum location: X=-73.00, Y=-62.00

SAR Peak: 0.65 W/kg

SAR 10g (W/Kg)	0.229908
SAR 1g (W/Kg)	0.413702



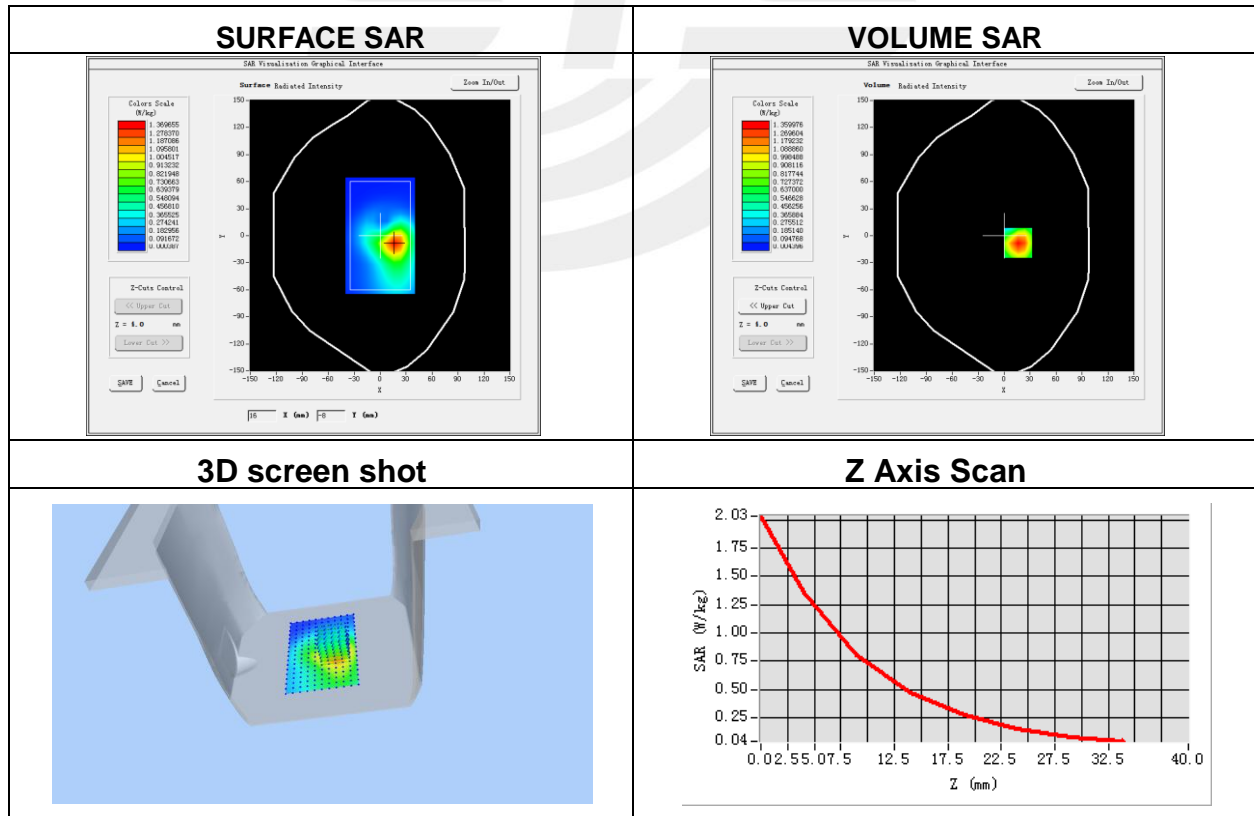
Plot 20: DUT: 4G phone; EUT Model: ezFlip

Test Date	2020-06-04
Probe	SN 14/16 EP309
ConvF	4.69
Area Scan	dx=8mm, dy=8mm, h= 5.00 mm
Zoom Scan	5x5x7, dx=8mm, dy=8mm, dz=5mm, Complete/ndx=8mm, dy=8mm, h= 5.00 mm
Phantom	Validation plane
Device Position	Back Side
Band	LTE Band 66 (RB 1)
Channels	High
Signal	LTE (Crest factor: 1.0)
Frequency (MHz)	1770
Relative permittivity (real part)	39.79
Conductivity (S/m)	1.42

Maximum location: X=16.00, Y=-8.00

SAR Peak: 2.04 W/kg

SAR 10g (W/Kg)	0.708844
SAR 1g (W/Kg)	1.286951





Appendix C. Probe Calibration and Dipole Calibration Report

Refer the appendix Calibration Report.

※※※※END OF THE REPORT※※※※

