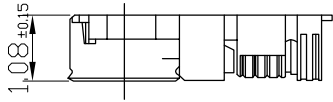
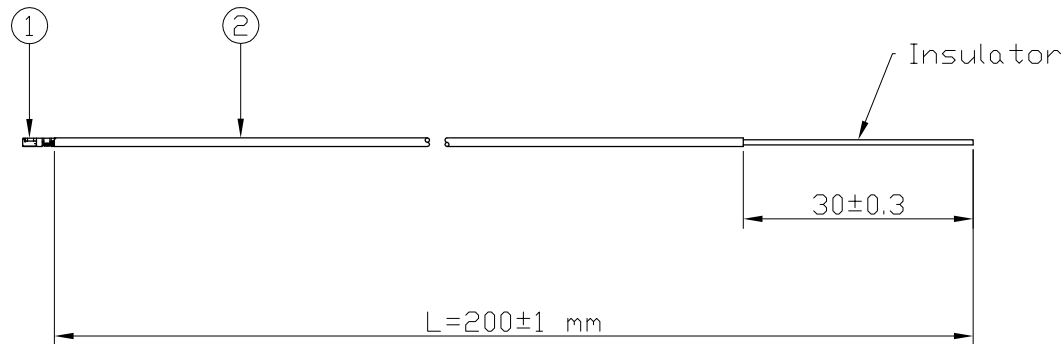


RoHS COMPLIANT

REVISIONS			
REV	DESCRIPTION	DATE	APPROVED
1.00	INITIAL DESIGN	2022/05/11	Kelly



MHF 4L Plug 8 : 1



Note:
 (1) The orientation on drawing is for reference only. (圖面組裝方向性僅供參考)
 (2) 100% Continuity, Short circuit test.

Wellshow Technology Co., Ltd
 TEL:+886-3-3700979 FAX:+886-3-3700955
[Http://www.rfcoaxcable.com](http://www.rfcoaxcable.com)

TITLE IPEX4L to 1.13(BK) to 30mm exposed insulator, L=200mm

DWG NO. 220429-11	CUST. P/N: CBL00522 DWG NO: N/A	UNIT mm	REV. 1.00
----------------------	---------------------------------------	------------	--------------

GENERAL TOLERANCES .X N/A .XX N/A .XXX N/A ANGLES N/A (UNLESS OTHERWISE SPECIFIED)	SCALE 1 : 1	APPROVALS	DATE
	SIZE A4	DRAWN BY: Kelly	2022/05/11
		CHK'D BY: Chili	2022/05/11
	SHEET 1 of 1	APP'D BY: Chili	2022/05/11

NO	DESCRIPTION	Q'TY	ITEM
02	1.13 coaxial cable (Black)	1	D1130XX5BT
01	I-PEX MHF 4 L Plug	1	20565-001R-13

Manufacturer is: Wellshow Technology Co., Ltd

Address: Room 1501-1502, Longshan Building, 555, Liangqing Road, Wuxi

Antenna model: HR-1

operation frequency: 2400-2500MHz

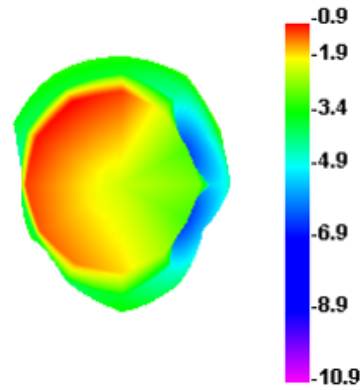
Antenna Gain: 2.1dBi

VSWR: max 1.3

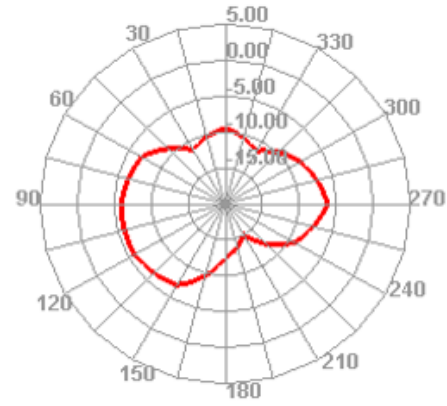
Dimension: L=200mm, D=1.13mm coaxial cable, 50Ohm, 30mm insulation is exposed at the end.

Plug: I-PEX MHF 4 L

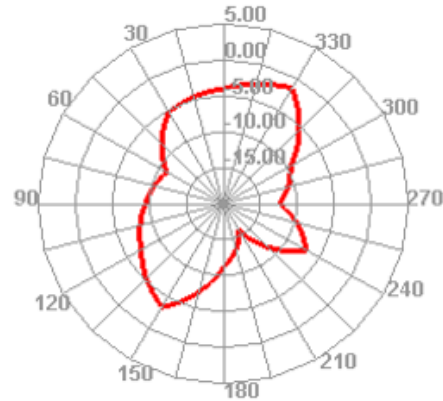
2400.000MHz



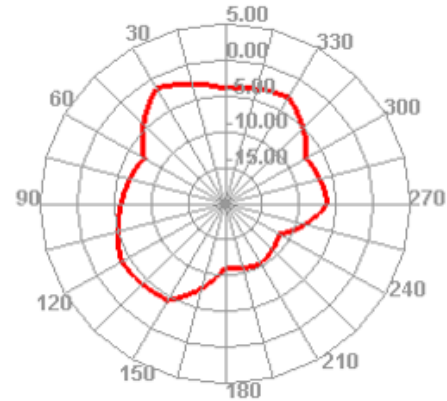
2400.000MHz H



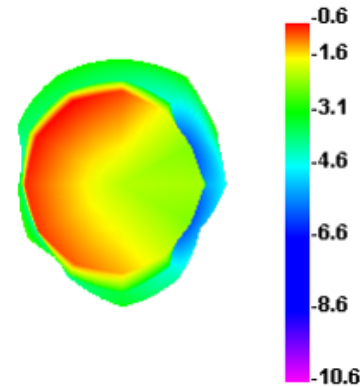
2400.000MHz E1



2400.000MHz E2



2425.000MHz



2425.000MHz H

