

Model	Tank specifications	Power	LEDs	Luminous flux
WRGB30 II built-in Controller	30-45cm tank	33W	30pcs	2300lm
RGB A301 Plus built-in Controller	30cm tank	23W	20pcs	1200lm
WRGB45 II built-in Controller	45-60cm tank	49W	50pcs	3600lm
RGB A451 Plus built-in Controller	45cm tank	35W	30pcs	1800lm
WRGB60 II built-in Controller	60-80cm tank	67W	60pcs	4500lm
RGB A601 Plus built-in Controller	60cm tank	45W	40pcs	2400lm
WRGB90 II built-in Controller	90-110cm tank	100W	90pcs	6200lm
RGB A901 Plus built-in Controller	90cm tank	69W	60pcs	3600lm
WRGB120 II built-in Controller	120-140cm tank	130W	120pcs	7700lm
RGB A1201 Plus built-in Controller	120cm tank	90W	80pcs	4800lm

Subject to technical changes.

This device requires an App to be used on your phone. Please download and install it as follows.



For Android

Please GET IT ON Google Play and search for "My Chihiros" to install.



My Chihiros

For iOS

Please Download on the App Store and search for "My Chihiros" to install.

RoHS



Shanghai Ogino Biotechnology Co., Ltd.

www.chihiros.cn

facebook.com/chihirosaquatic

Manufacturer:

Shanghai Ogino Biological Technology Co., Ltd. CIXI Branch

No.1999 Xisanhuan Road, Cixi City, Ningbo, Zhejiang, China

E-mail: chihiros@chihiros.cn

Tel: +86-574-63213987



WRGB IISeries

LED Lighting system manual

Please read and follow all instructions before starting use the product!

SAFETY INSTRUCTIONS

- **Never look directly into the LED-Light! It may cause danger to your eyes!**

- Always unplug the power before maintenance work or cleaning.
- For using with AC 100-240V – 50/60 Hz only.
- For indoor use only.

- **Never use the light under the water.**

- Use the light only after the installation is completed.
- The power plug should always be within easy reach so that power could be turned off instantly in case there should be an emergency failure after installation.
- Never cover up the LED light and power adapter for the best cooling.
- For your own safety, we recommend to form a drip loop with the connection cable to prevent any water running along the cable from intruding into the socket.

- Do not use the product if any part of connection cable or power adapter is damaged. The damaged parts must be replaced before using again. Use only original Chihiros parts.

- Children above the age of 8 or individuals with reduced physical, mental or sensory capacities or lack of experience or knowledge may be allowed to use the product, only provided they are supervised or have received instruction in the safe use of the product and therefore understand the risks involved. Do not allow children to play with this product. Do not allow children to clean or conduct user maintenance without supervision.

- Do not dispose of this product as normal household waste. Take it to your local refuse collection site.

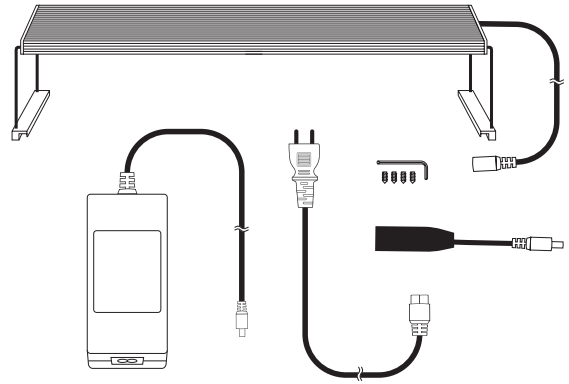
- **If the LED-Modul drops into the water by accident, please unplug the power immediately! Make sure the LED-Modul is fully dried out before using again.**

- Never put the power adapter in or above of the aquarium cover.
- The water tank should be covered by a cover in case of using a CO2-Diffuser or air pumps. The LED-Modul is protected by plexiglass, nevertheless it should not be in contact with any water drops.

- The LED-Light must always be at least 60mm above the water surface.

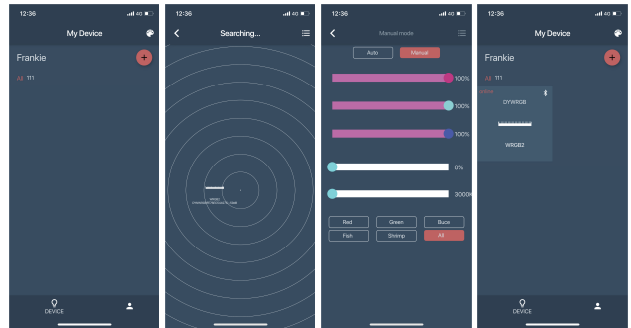
- **Never use the LED-Light in an aquarium cover.**

- The LED-Light is very hot during the application. Please do not touch it before the power is unplugged and fully cooled.



APP CONNECTION

Please make sure that the Bluetooth® and position switch on the phone are turned on before use.



TECHNICAL SPECIFICATIONS

Power Input	AC100 - 240 V 50/60 Hz
Power Output	DC36V
LED lifetime	Over 50,000hrs

PACKAGE CONTENTS

- LED-light body
- Light stand
- Screws and inner hexagon spanner
- Power adapter and plug
- Pen controller

Warning:

This device complies with Part 15 of the FCC Rules. Operation is subject to the following two conditions: (1) this device may not cause harmful interference, and (2) this device must accept any interference received, including interference that may cause undesired operation.

changes or modifications not expressly approved by the party responsible for compliance could void the user's authority to operate the equipment.

NOTE: This equipment has been tested and found to comply with the limits for a Class B digital device, pursuant to Part 15 of the FCC Rules. These limits are designed to provide reasonable protection against harmful interference in a residential installation. This equipment generates, uses and can radiate radio frequency energy and, if not installed and used in accordance with the instructions, may cause harmful interference to radio communications. However, there is no guarantee that interference will not occur in a particular installation. If this equipment does cause harmful interference to radio or television reception, which can be determined by turning the equipment off and on, the user is encouraged to try to correct the interference by one or more of the following measures:

- Reorient or relocate the receiving antenna.
- Increase the separation between the equipment and receiver.
- Connect the equipment into an outlet on a circuit different from that to which the receiver is connected.
- Consult the dealer or an experienced radio/TV technician for help.

NOTE: This device and its antenna(s) must not be co-located or operation in conjunction with any other antenna or transmitter

RF Exposure Statement

To maintain compliance with FCC's RF Exposure guidelines, This equipment should be installed and operated with minimum distance of 20cm the radiator your body. This device and its antenna(s) must not be co-located or operation in conjunction with any other antenna or transmitter