

Test Report

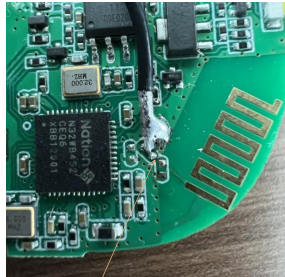
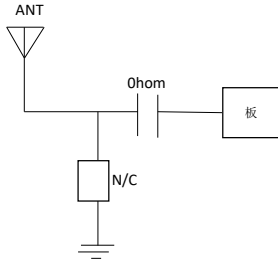
Information

Manufacturer	Sunnyway Technology (china) Co., LTD.
Model Name	蓝牙板载
Date	2022.05.06
Designer	zhuzhibing
Serial Number/ESN/IMEI	N/A
Band	2400-2500Mhz

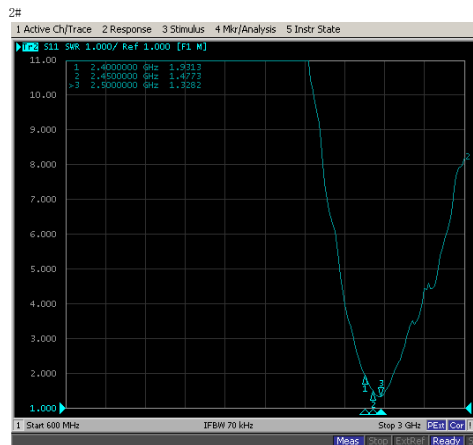
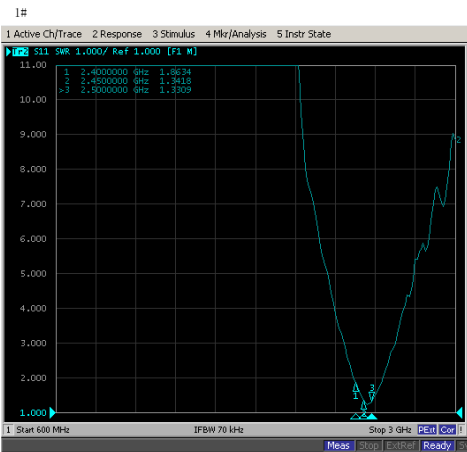
Test prototype



match

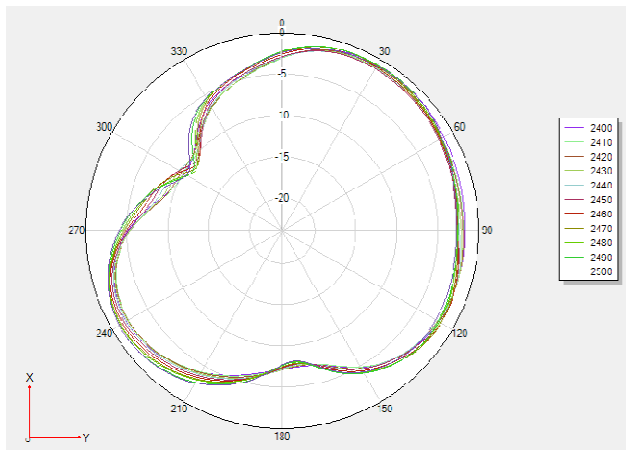
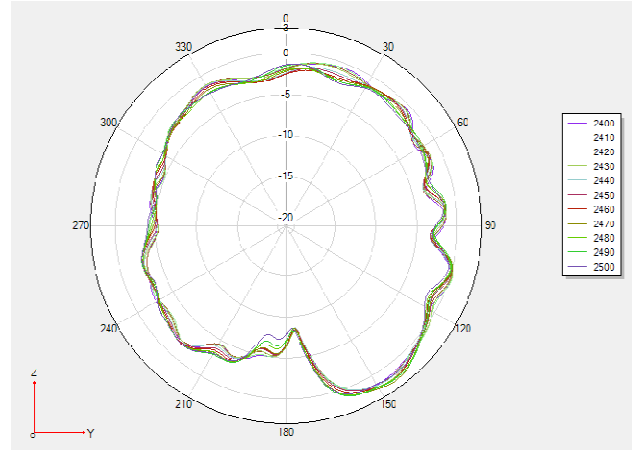
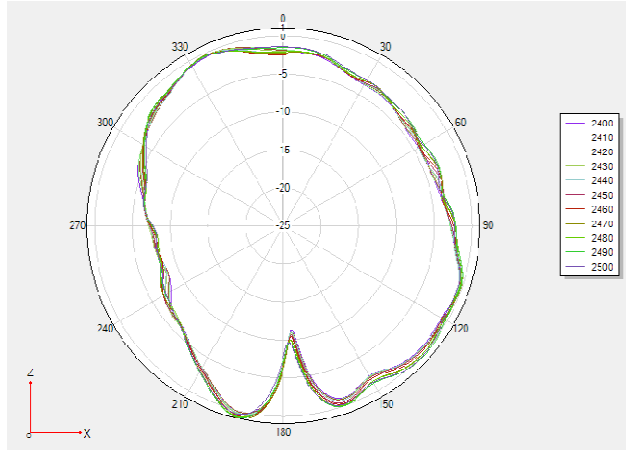


Ohom



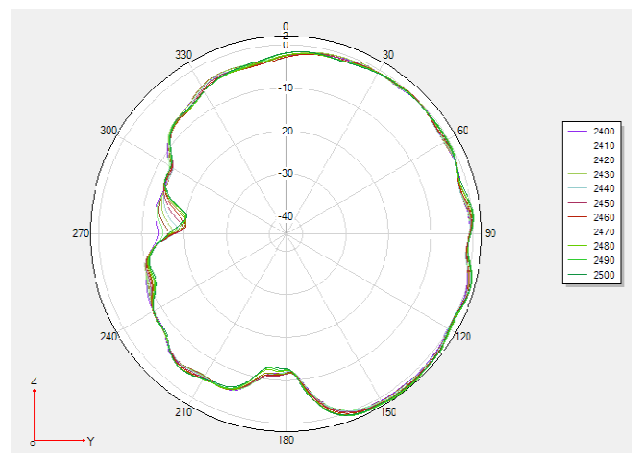
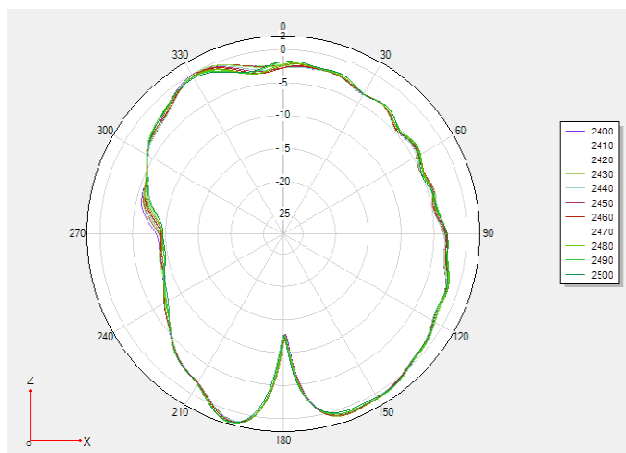
1#

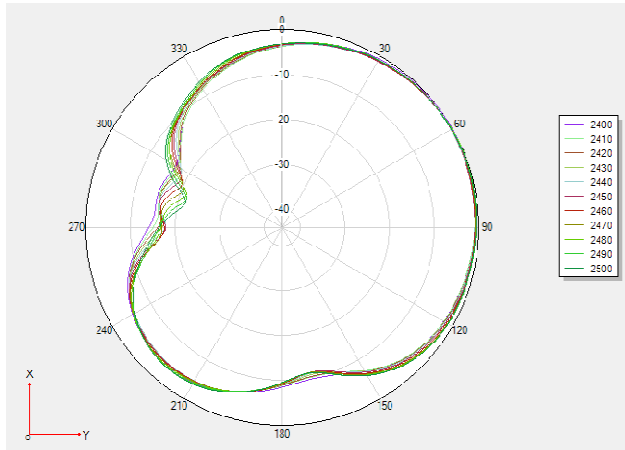
Frequency/MHz	Efficiency / dB	Efficiency / %	MaxGain/dBi	AvgGain/dBi
2400	-2.46	56.75	1.3	-2.46
2410	-2.49	56.36	1.43	-2.49
2420	-2.43	57.15	1.41	-2.43
2430	-2.36	58.08	1.69	-2.36
2440	-2.33	58.48	1.5	-2.33
2450	-2.26	59.43	1.82	-2.26
2460	-2.12	61.38	1.87	-2.12
2470	-2.07	62.09	2.21	-2.07
2480	-2.1	61.66	2.09	-2.1
2490	-2.06	62.23	2.22	-2.06
2500	-2.13	61.24	1.96	-2.13



2#

Frequency/MHz	Efficiency / dB	Efficiency / %	MaxGain/dBi	AvgGain/dBi
2400	-2.78	52.72	1.49	-2.78
2410	-2.83	52.12	1.65	-2.83
2420	-2.79	52.6	1.63	-2.79
2430	-2.71	53.58	1.82	-2.71
2440	-2.74	53.21	1.71	-2.74
2450	-2.64	54.45	1.93	-2.64
2460	-2.56	55.46	1.97	-2.56
2470	-2.53	55.85	2.09	-2.53
2480	-2.49	56.36	2	-2.49
2490	-2.51	56.1	2.13	-2.51
2500	-2.54	55.72	1.93	-2.54





调试总结:

1. 匹配为串联0欧姆电阻
 2. 天线无源效率OK
-

Thank You

上海研发中心:上海市青浦区高光路215弄99号4号楼1楼

深圳研发中心:深圳市光明区南太云创谷中心5栋6楼

重庆研发中心:重庆市渝北区仙桃数据谷东路19号ARM生态产业园1F

惠州工厂地址:惠州市惠城区水口镇龙湖工业区中心村路一号4-5楼

