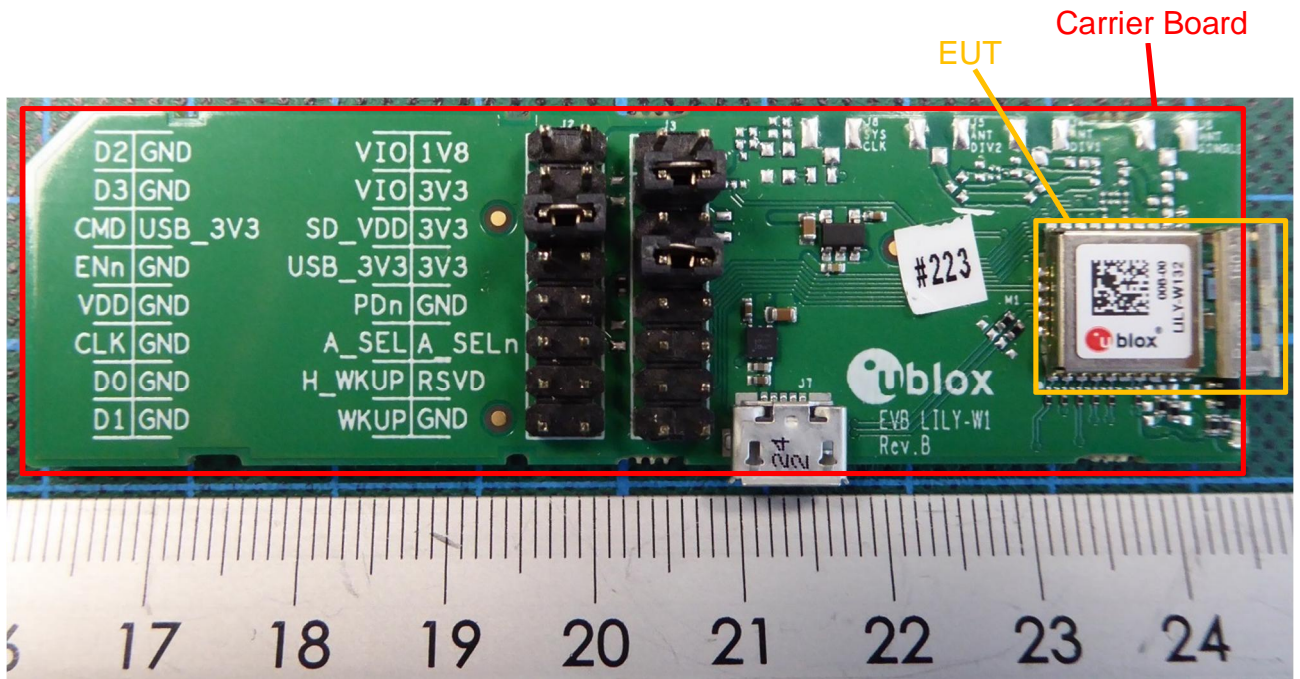
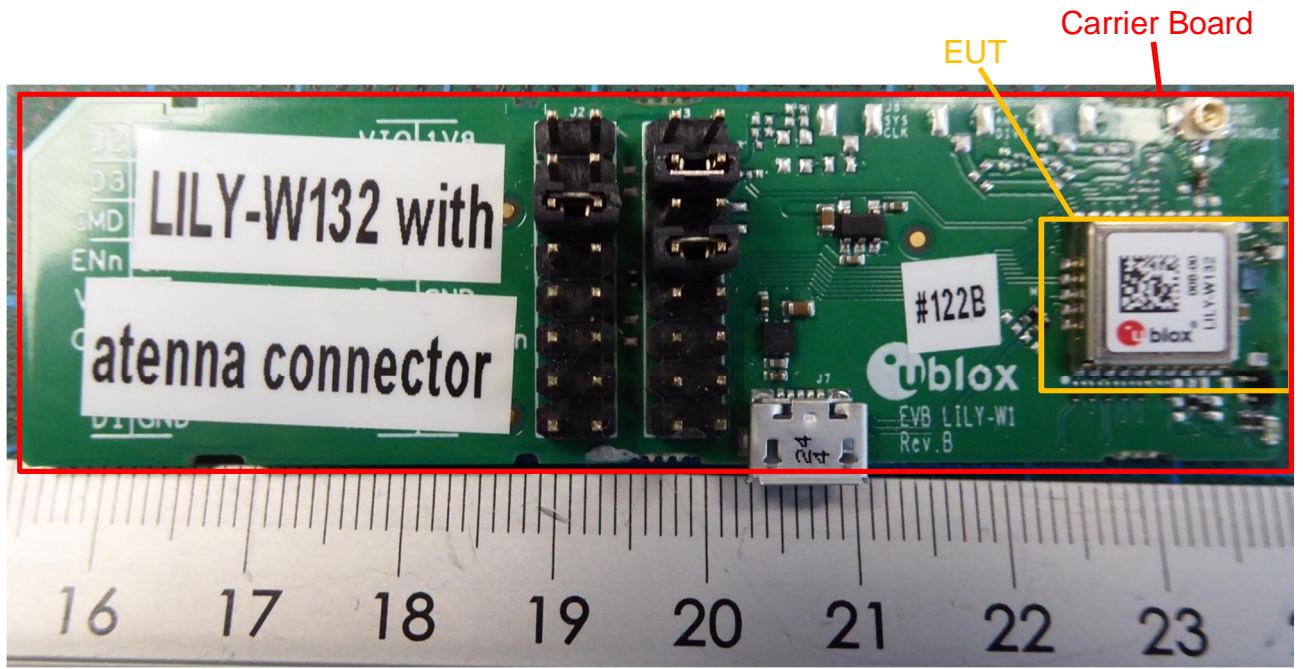


ANNEX B: EXTERNAL PHOTOGRAPHS



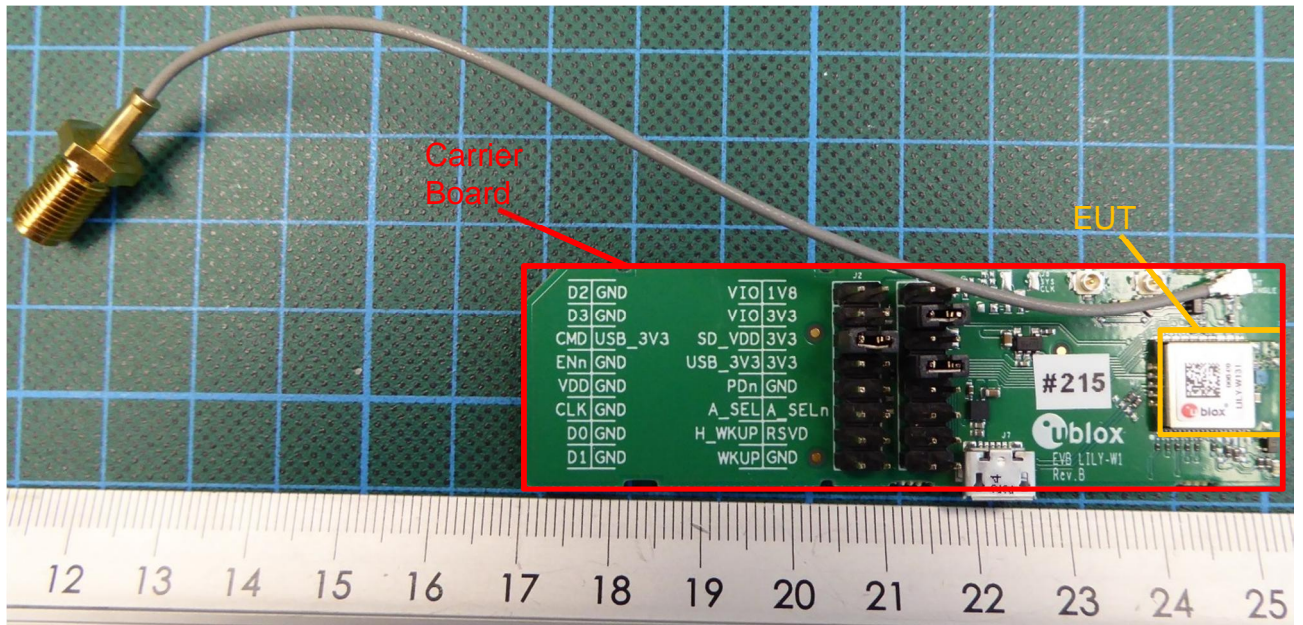
160875_p.jpg: Lily-W132 (#223) on EVB LILY-W1 carrier-board – top view

ANNEX B: EXTERNAL PHOTOGRAPHS



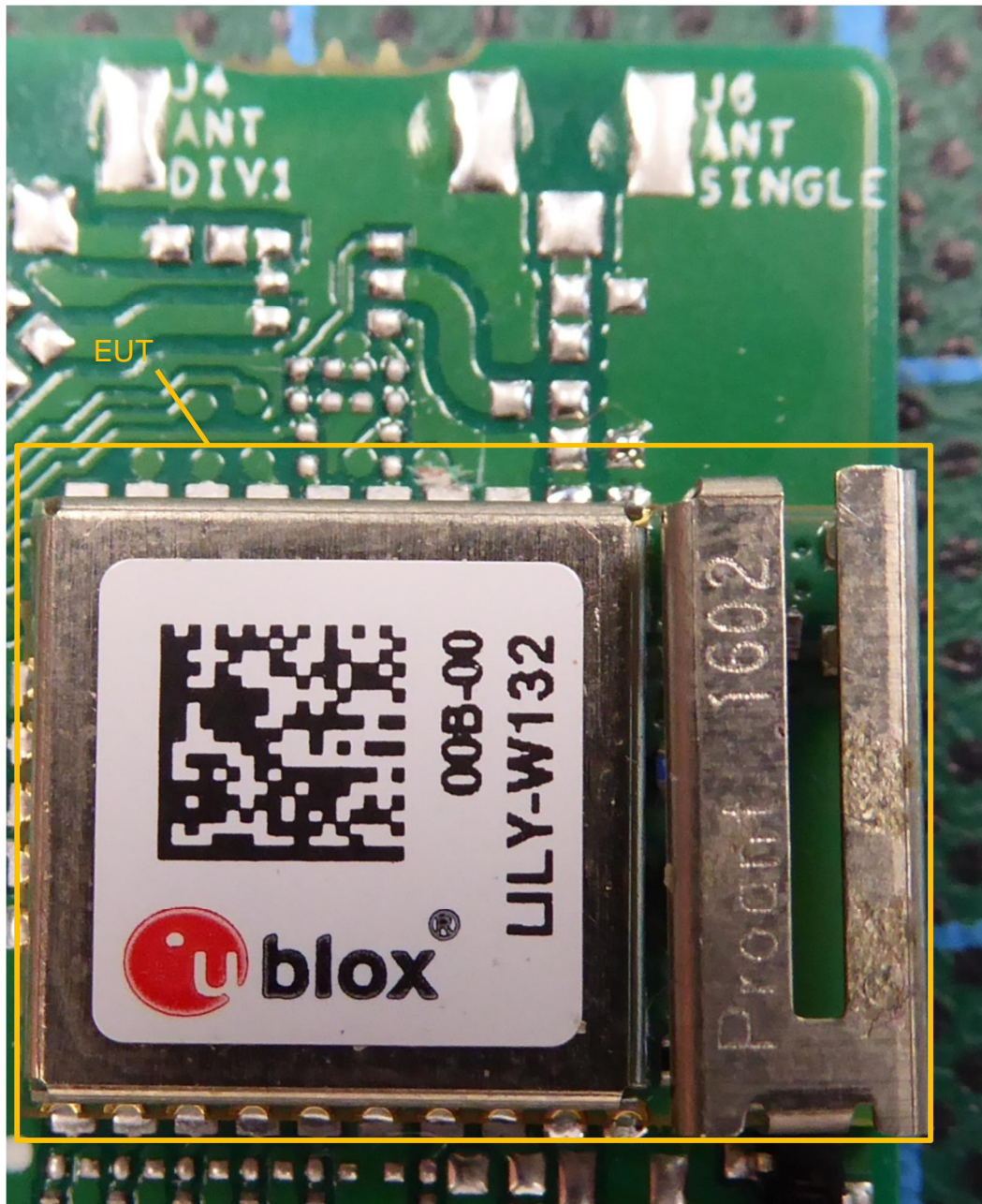
160875_q.jpg: Lily-W132 (#122B) with temporary antenna connector on EVB LILY-W1 carrier-board – top view

ANNEX B: EXTERNAL PHOTOGRAPHS



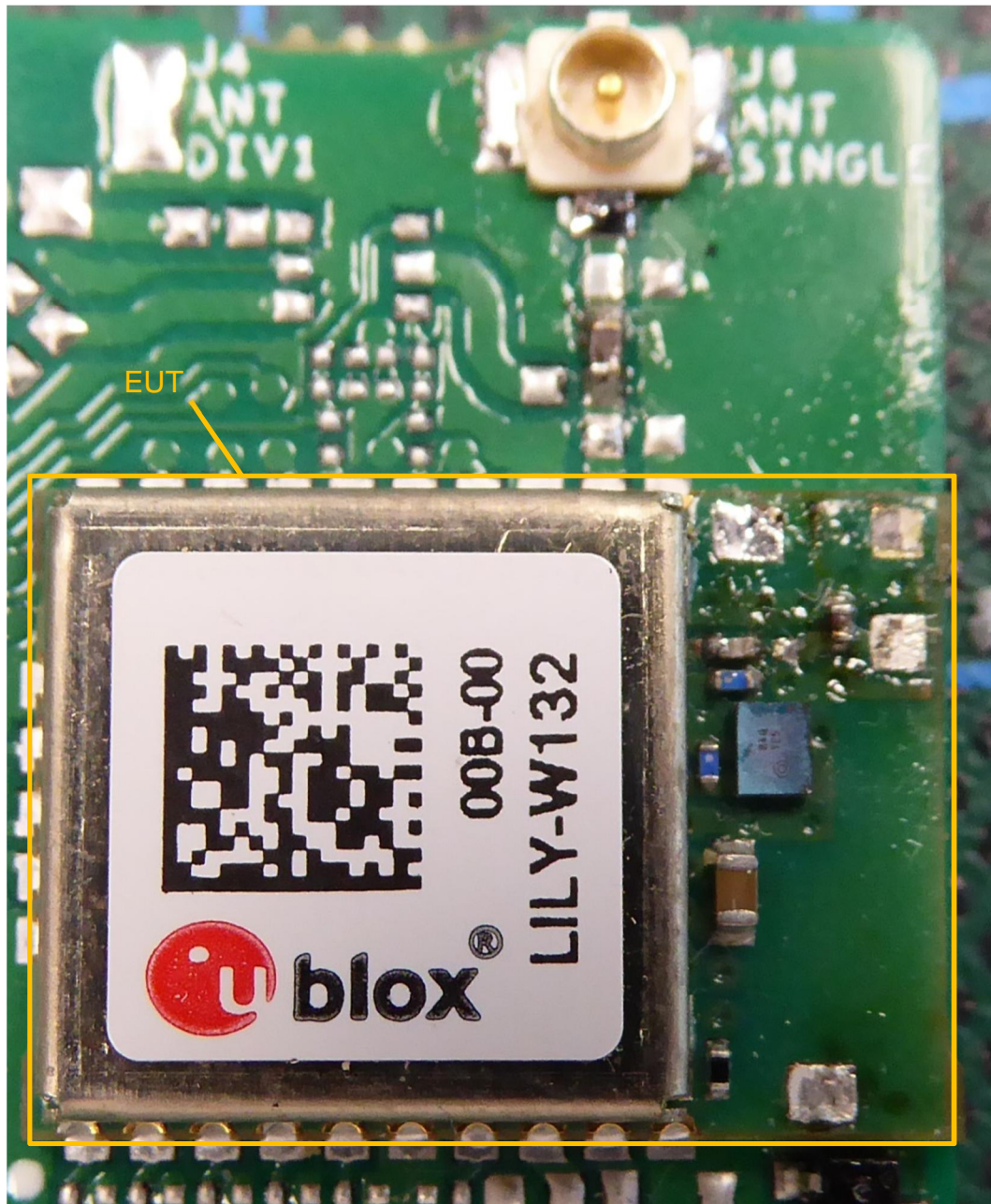
160875_r.jpg: Lily-W131 (#215) on EVB LILY-W1 carrier-board – top view

ANNEX B: EXTERNAL PHOTOGRAPHS



160785_s.jpg: Lily-W132 (#223) with shielding on EVB LILY-W1 carrier-board close up – top view

ANNEX B: EXTERNAL PHOTOGRAPHS



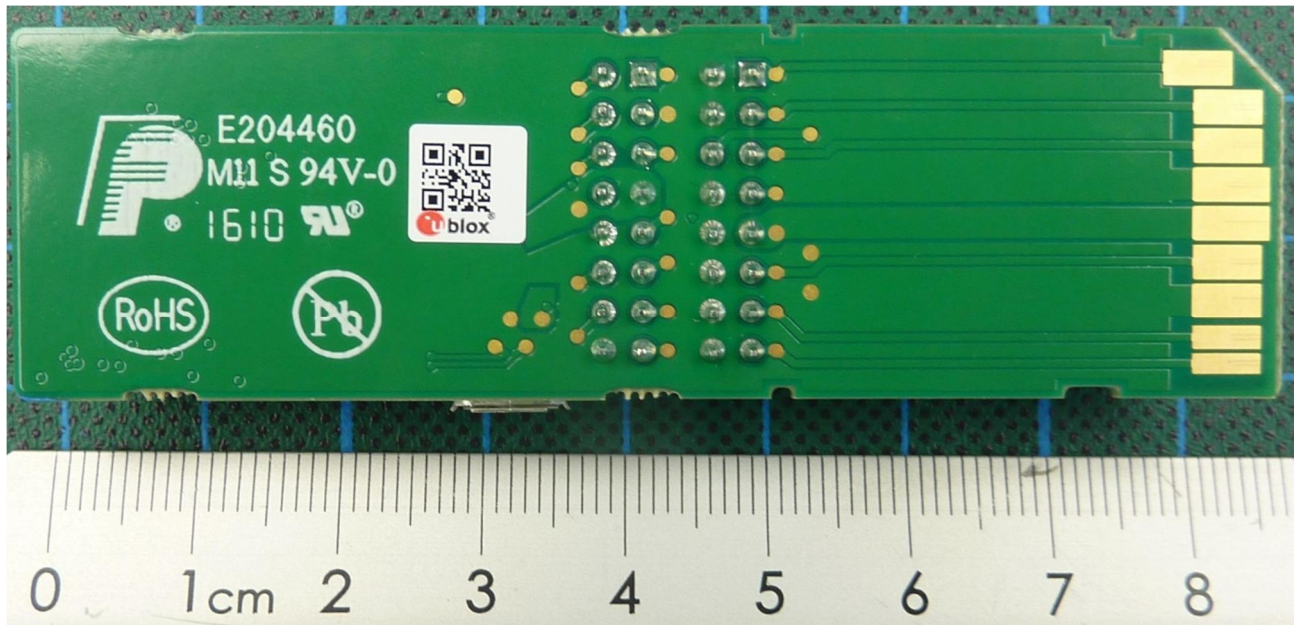
160785_t.jpg: Lily-W132 (#122B) with temporary antenna connector and shielding on EVB LILY-W1 carrier-board close up – top view

ANNEX B: EXTERNAL PHOTOGRAPHS



160785_u.jpg: Lily-W131 (#215) with shielding on EVB LILY-W1 carrier-board close up – top view

ANNEX B: EXTERNAL PHOTOGRAPHS



160785_i.jpg: Lily-W131/132 on EVB LILY-W1 carrier-board – bottom view

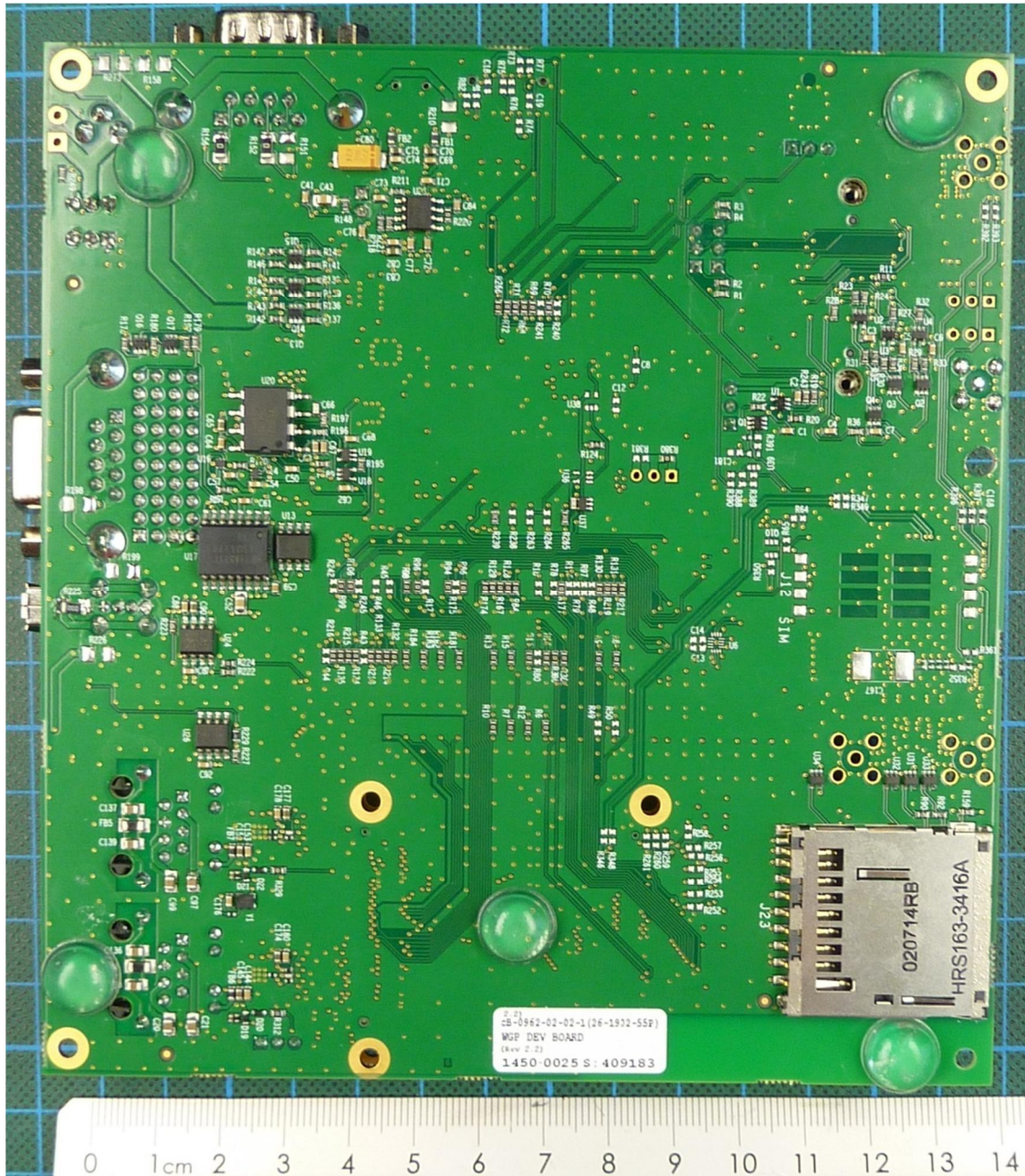
ANNEX B: EXTERNAL PHOTOGRAPHS



160785_a.jpg: Linux board cB0962* – top view

* The module visible in the picture is not part of this test report and was not active during any of the tests that were performed for this test report.

ANNEX B: EXTERNAL PHOTOGRAPHS



160785_b.jpg: Linux board cB0962 – bottom view