

MOTION SENSOR



DESCRIPTION



KRG PIR motion sensor is designed to detect **movement events and measure room temperature**.

It is a fully supervised low-current wireless **PIR detector** including an **advanced Sigfox protocol radio**.

SENSOR PREPARATION

If you don't own a pet, remove the shield :



with the shield without the shield



1. Remove the shield with a flat screwdriver.



2. Put the regular circle around the «eye».



SENSOR PREPARATION

1. Clean the wall surface.
2. Remove the slice at the bottom of the detector. This will start sensor by activating batteries already installed.



SET UP

The sensor connects automatically to the network.

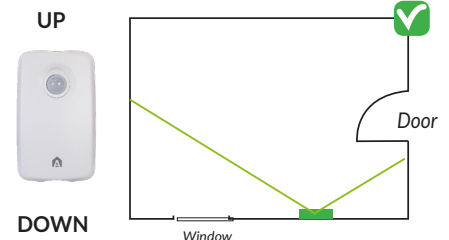
1. **Red** LED on the sensor, flashes every second during one minute.
2. **Green or red** (depending on the configuration) LED lights on during 5 seconds.
3. The configuration is set up.

After every battery replacement or software reset, the sensor will perform the set up operation.

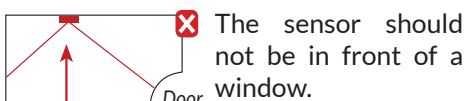
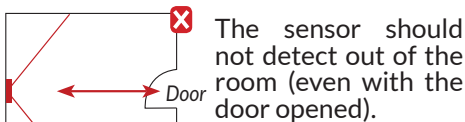
The device shall keep at least 20cm separated from the humans.

INSTALLATION

1. **Double-sided tapes** are given to stick the sensor in the proper position on the wall.
2. Put sensors between **1.60m** and **1.80m** above the ground. Always choose a wall perpendicular to the entrance door of the room.



INSTALLATION



Make sure the sensor is well fixed and will not fall.

PRECAUTIONS

AVOID THE FOLLOWING LOCATIONS



Facing areas that may quickly change temperature.



Hidden by decorations.



Facing directly the window and sunlight.

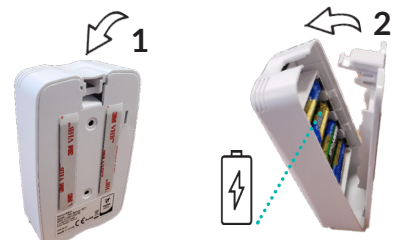


Avoid liquidity

BATTERY CHANGE

When the battery is low (<20%), the **red** light flashes every 10 seconds.

1. **No need to remove the sensor from the wall.** Press on the front of the sensor to open it.
2. Take out old batteries.
3. Install new batteries according to polarity marking.
4. The sensor will initialize itself with setup configuration (see red LED flashing for one minute).



DIMENSIONS



SPECIFICATIONS

Sigfox Zone	RC2
Model Name	DS-1023ST-00
RF Specification	Sigfox Class 0
Temperature sensor	Accuracy +/-0,5c
PIR FOV angle	Horizontal 120 ; vertical 70
Pet immunity	Doesn't detect pet under 25 kg.
LED	Dual color LED ,green and red;
Mounting on the wall	Double-sided tapes
Battery	Alkaline battery, AA*4pcs
Battery life	>24 months
Operation environment	-10 / +50c, 0-90% RH non-condensing
Storage Environment	-20 /+70c, 0-90% RH non-condensing

Federal Communication Commission Interference Statement

This equipment has been tested and found to comply with the limits for a Class B digital device, pursuant to Part 15 of the FCC Rules. These limits are designed to provide reasonable protection against harmful interference in a residential installation. This equipment generates, uses and can radiate radio frequency energy and, if not installed and used in accordance with the instructions, may cause harmful interference to radio communications. However, there is no guarantee that interference will not occur in a particular installation. If this equipment does cause harmful interference to radio or television reception, which can be determined by turning the equipment off and on, the user is encouraged to try to correct the interference by one of the following measures:

- Reorient or relocate the receiving antenna.
- Increase the separation between the equipment and receiver.
- Connect the equipment into an outlet on a circuit different from that to which the receiver is connected.
- Consult the dealer or an experienced radio/TV technician for help.

FCC Caution: Any changes or modifications not expressly approved by the party responsible for compliance could void the user's authority to operate this equipment.

This device complies with Part 15 of the FCC Rules. Operation is subject to the following two conditions: (1) This device may not cause harmful interference, and (2) this device must accept any interference received, including interference that may cause undesired operation.

IMPORTANT NOTE:

Radiation Exposure Statement:

This equipment complies with FCC radiation exposure limits set forth for an uncontrolled environment. This equipment should be installed and operated with minimum distance 20cm between the radiator & your body.

This transmitter must not be co-located or operating in conjunction with any other antenna or transmitter.

Country Code selection feature to be disabled for products marketed to the US/
CANADA

Operation of this device is restricted to indoor use only

Industry Canada statement:

This device contains licence-exempt transmitter(s)/receiver(s) that comply with Innovation, Science and Economic Development Canada's licence-exempt RSS(s). Operation is subject to the following two conditions:

- (1) This device may not cause interference
- (2) This device must accept any interference, including interference that may cause undesired operation of the device

L'émetteur/récepteur exempt de licence contenu dans le présent appareil est conforme aux CNR d'Innovation, Sciences et Développement économique Canada applicables aux appareils radio exempts de licence. L'exploitation est autorisée aux deux conditions suivantes :

- (1) L'appareil ne doit pas produire de brouillage;
- (2) L'appareil doit accepter tout brouillage radioélectrique subi, même si le brouillage est susceptible d'en compromettre le fonctionnement.

Radiation Exposure Statement:

This equipment complies with Canada radiation exposure limits set forth for an uncontrolled environment. This equipment should be installed and operated with minimum distance 20cm between the radiator & your body.

Déclaration d'exposition aux radiations:

Cet équipement est conforme Canada limites d'exposition aux radiations dans un environnement non contrôlé. Cet équipement doit être installé et utilisé à distance minimum de 20cm entre le radiateur et votre corps.

KRG
CORPORATE