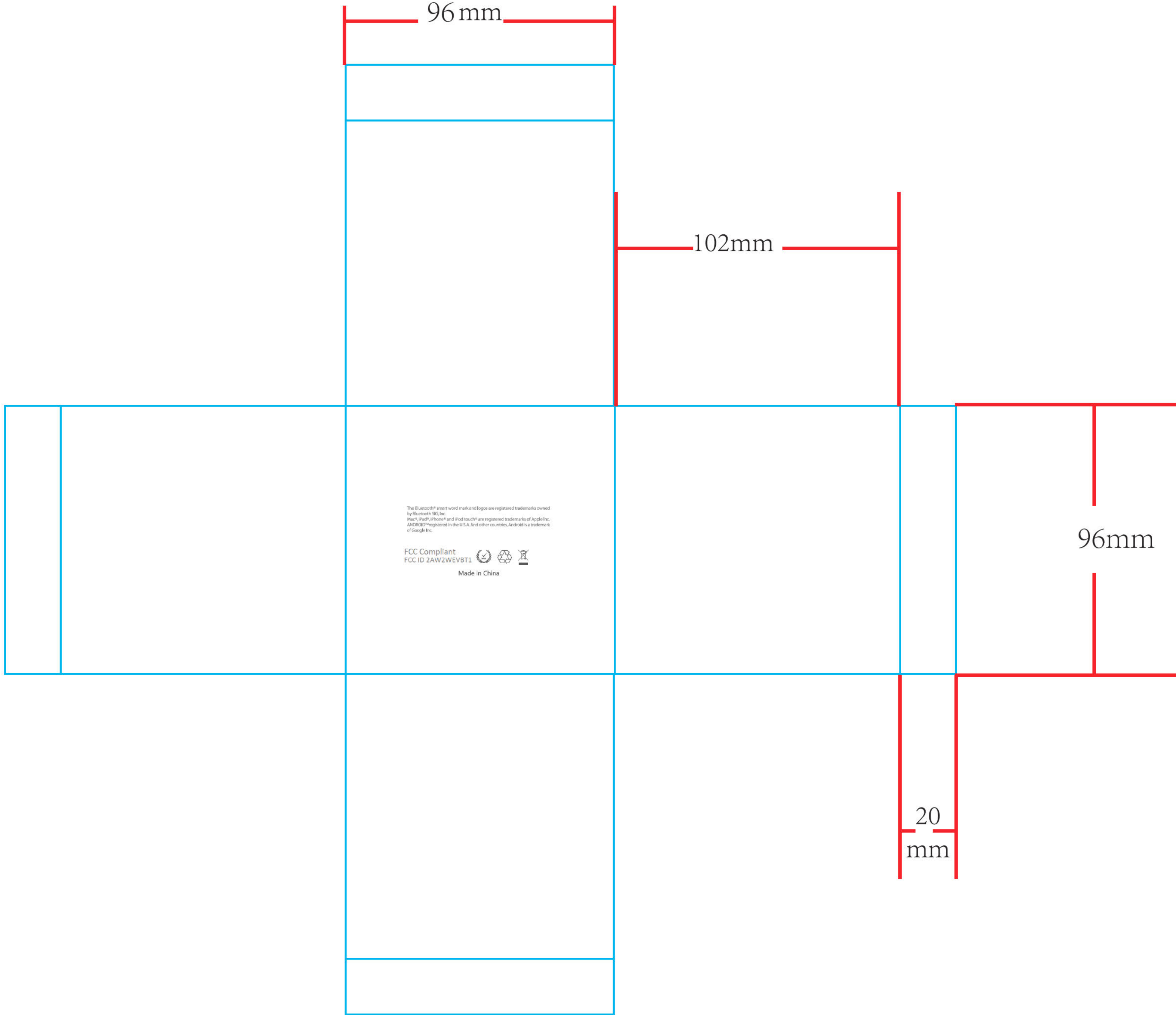


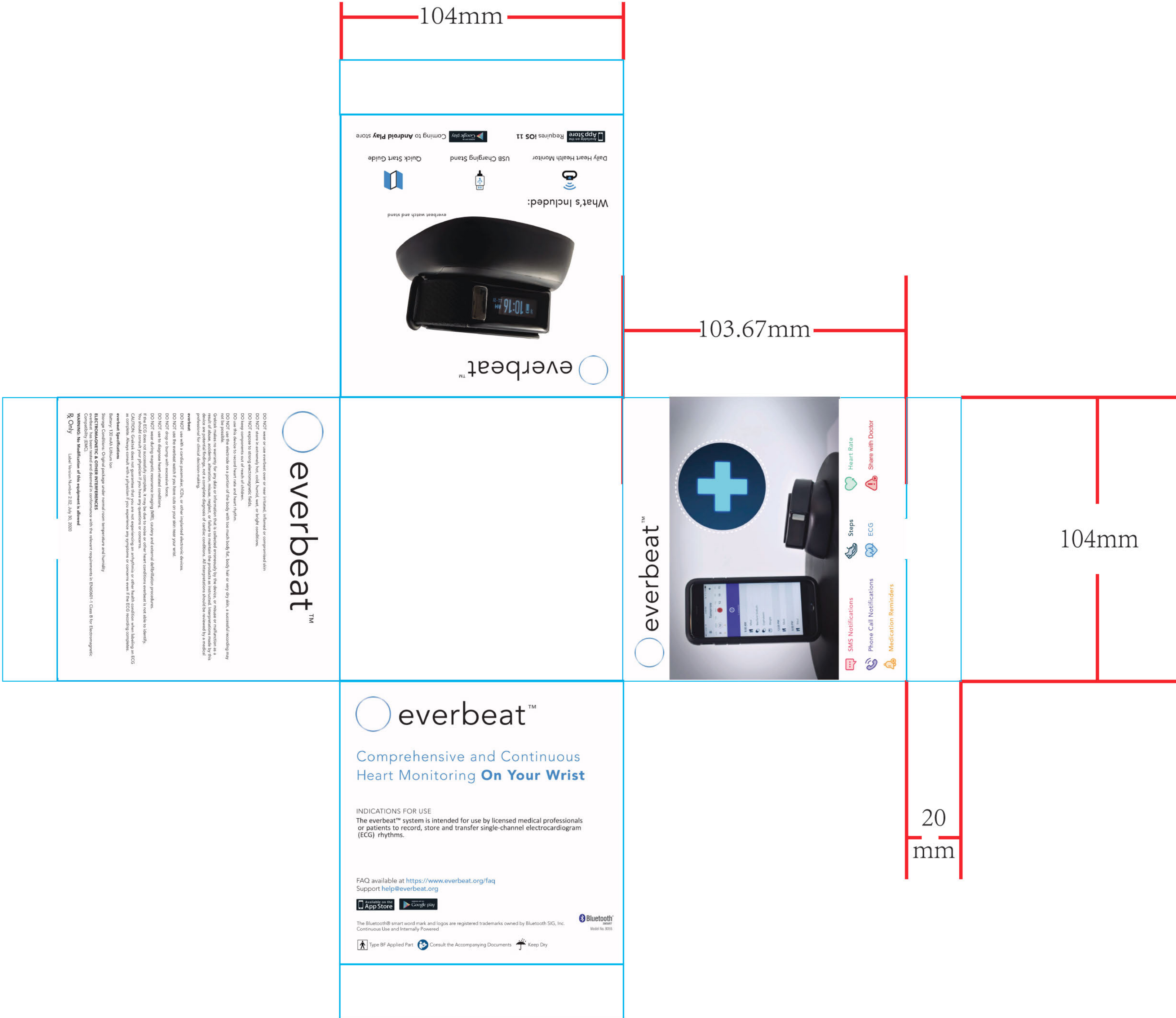
内尺寸

bottom cover : 96\*96\*102mm

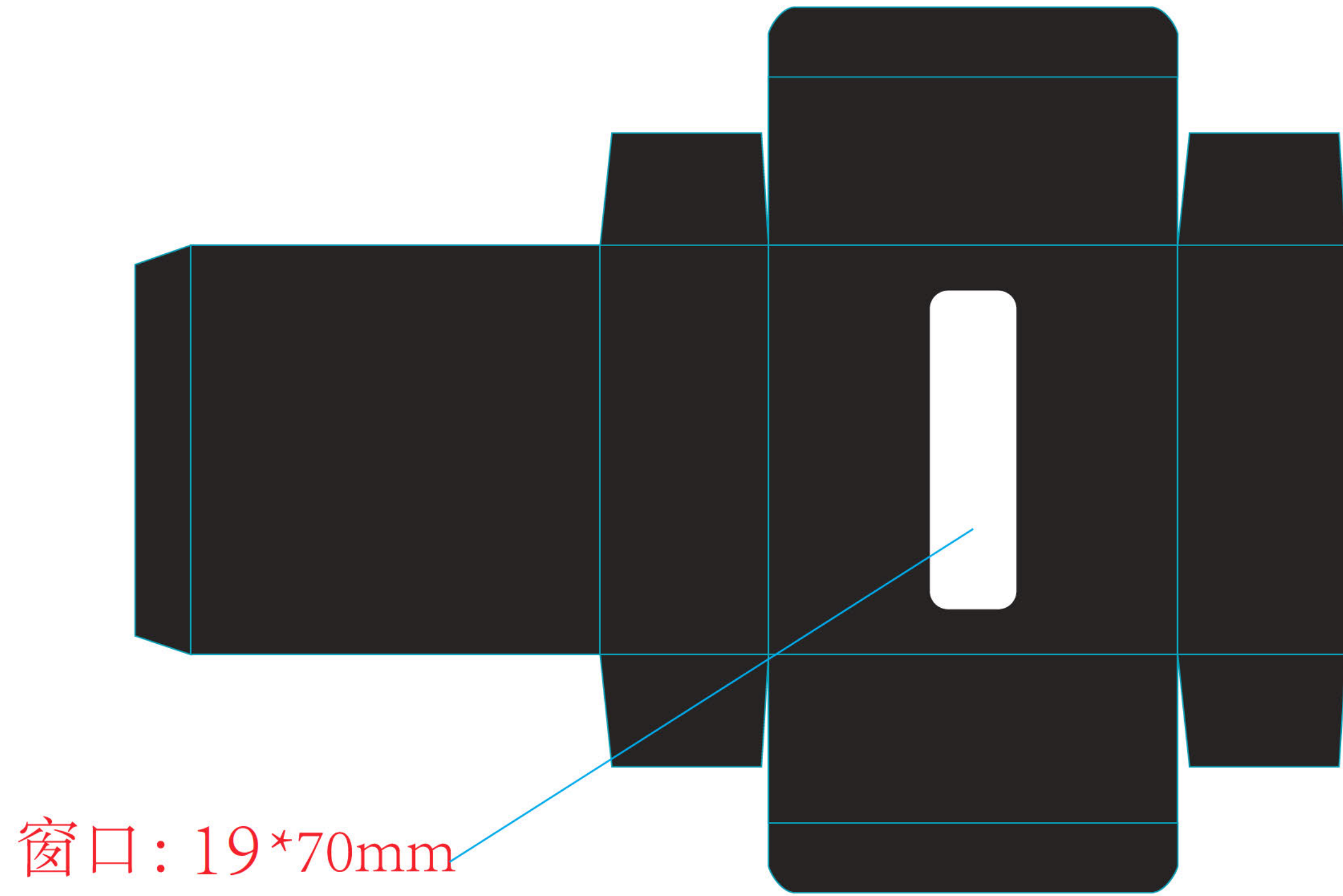


内尺寸

top cover : 104\*104\*103.67mm

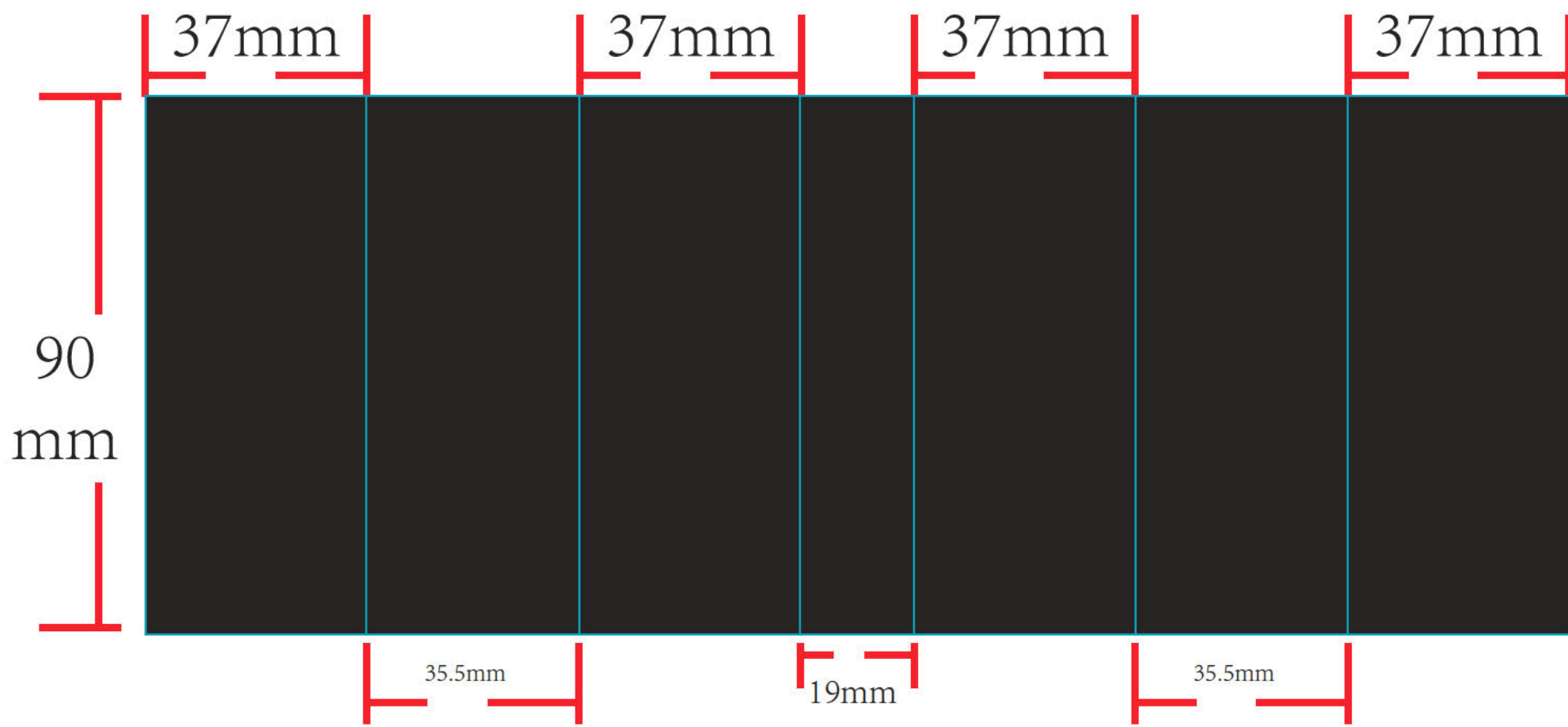


内拖：90\*90\*37mm

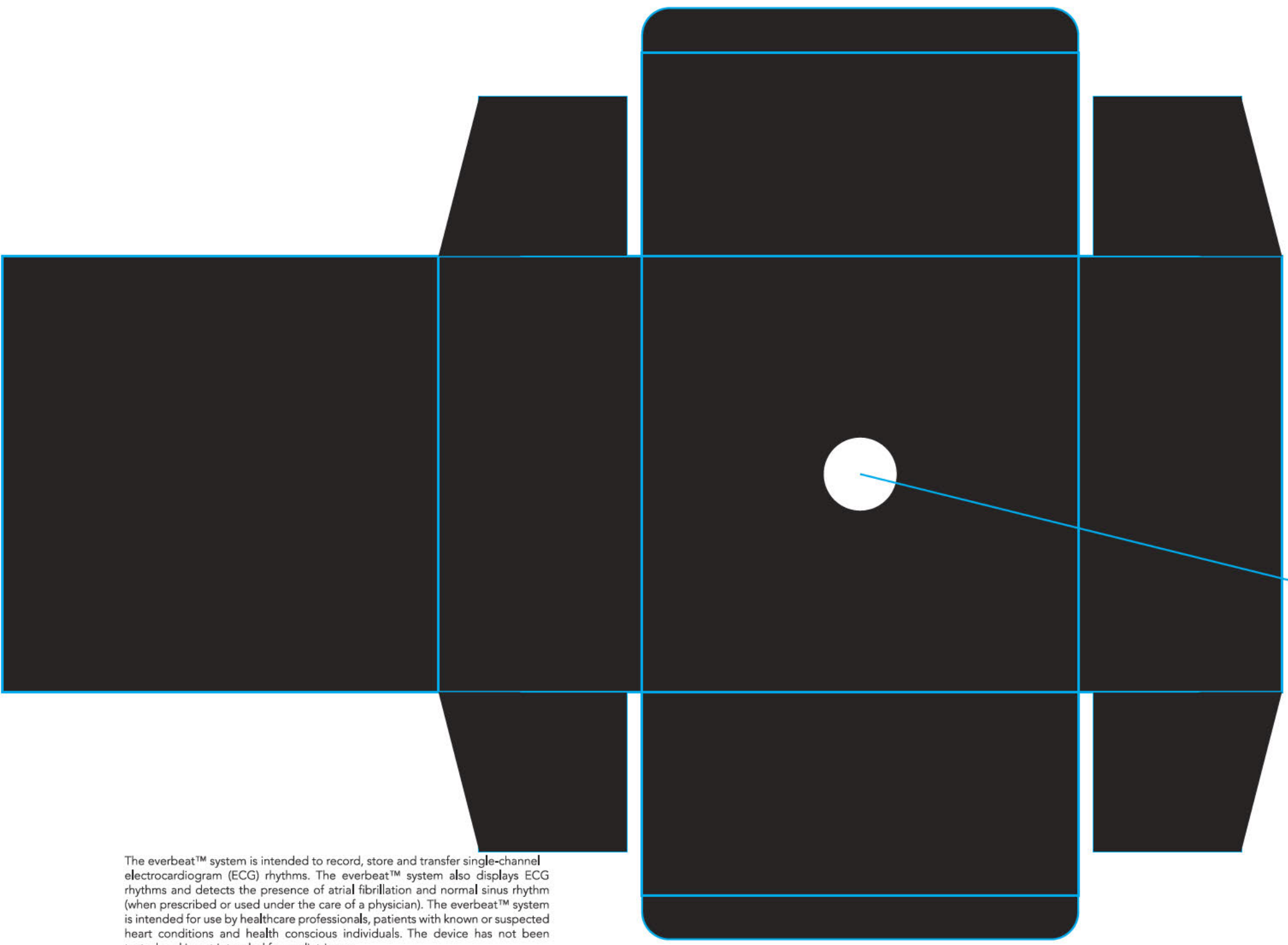


窗口：19\*70mm

内折纸（置于内托内）：



内盒：90\*90\*42mm



窗口：直径15mm

The everbeat™ system is intended to record, store and transfer single-channel electrocardiogram (ECG) rhythms. The everbeat™ system also displays ECG rhythms and detects the presence of atrial fibrillation and normal sinus rhythm (when prescribed or used under the care of a physician). The everbeat™ system is intended for use by healthcare professionals, patients with known or suspected heart conditions and health conscious individuals. The device has not been tested and is not intended for pediatric use.

# FCC Label Location for Everbeat Watch: FCC ID: 2AW2WEVBT1

## Version 1.2

24 Sept 2020

Since the Everbeat Watch is smaller than 4"x 4", the FCC label is not on the product itself but is E-Labeled and in the following locations:

- 1) On the bottom of the Everbeat box:



- 2) In the product insert pamphlet on page 7:



**FCC ID: 2AW2WEVBT1**

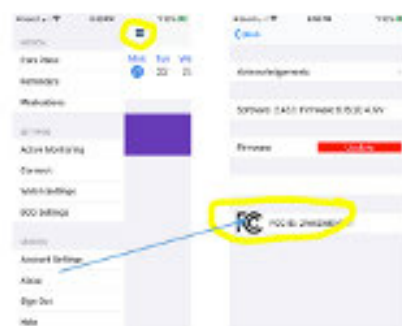
**This device complies with Part 15 of FCC Rules.**

Operation is subject to the following two conditions:

1. This device may not cause harmful interference, and
2. This device must accept any interference received, including interference that may cause undesired operation.

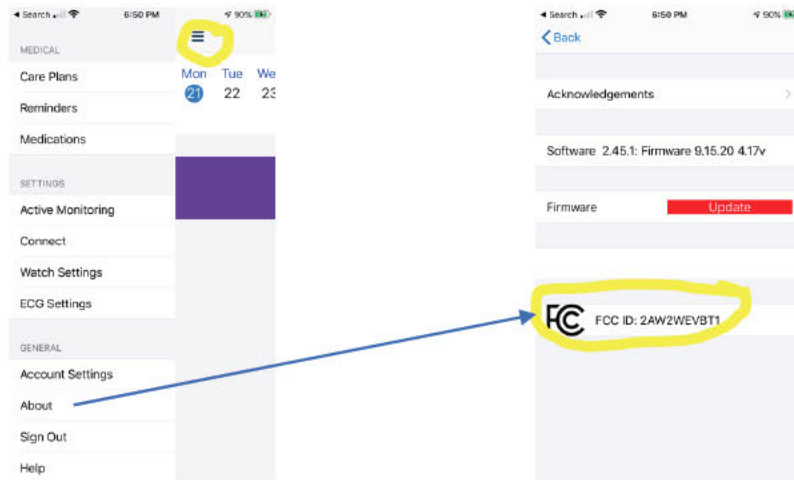
**FCC - E Label:** Using the Everbeat App: Open the About option from the "Hamburger" Menu on the upper left side:

On the 5<sup>th</sup> line the FCC ID will be displayed:





- 3) E Label: Using the Everbeat App: Open the About option from the “Hamburger” Menu on the upper left side:



On the 5<sup>th</sup> line the FCC ID will be displayed:

- 4) The following verbiage is in the Instructions for Use on Page 15:

*Note: This equipment has been tested and found to comply with the limits for a Class B digital device, pursuant to part 15 of the FCC Rules. These limits are designed to provide reasonable protection against harmful interference in a residential installation. This equipment generates, uses and can radiate radio frequency energy and, if not installed and used in accordance with the instructions, may cause harmful interference to radio communications. However, there is no guarantee that interference will not occur in a particular installation. If this equipment does cause harmful interference to radio or television reception, which can be determined by turning the equipment off and on, the user is encouraged to try to correct the interference by one or more of the following measures:*

- Reorient or relocate the receiving antenna.
- Increase the separation between the equipment and receiver.
- Connect the equipment into an outlet on a circuit different from that to which the receiver is connected.

Operation is subject to the following two conditions:

1. This device may not cause harmful interference, and
2. This device must accept any interference received, including interference that may cause undesired operation.

CAUTION: Changes or modifications to this device not expressly approved by Grektek could void your authority to use this equipment.

- 5) On page 15 of the IFU – the function of the e-label is described

FCC - E Label: Using the Everbeat App: Open the About option from the “Hamburger” Menu on the upper left side:

On the 5<sup>th</sup> line the FCC ID will be displayed:

