

# HD SMART WI-FI CAMERA

## INSTRUCTION MANUAL

PLEASE READ ALL INSTRUCTIONS CAREFULLY  
AND RETAIN FOR FUTURE USE

### Getting Started

- Remove the Camera and its accessories from the box.
- Remove any packaging from the product.
- Please retain all packaging until you have checked and counted all the parts and the contents against the parts list.

### Package Contents

- HD Smart Wi-Fi Camera
- USB Type-C Power Cord
- 1 Wall Mounting Plate
- 2 Wall Plugs
- 2 Screws
- 1 Reset Pin
- Instruction Manual
- 1 power adapter

## **Key Features**

- HD Smart Wi-Fi Camera makes it simpler to keep an eye on your home
- App supports up to 4 cameras (sold separately)
- Full HD 1920x1080 resolution
- Easy to install and set-up
- View your home through your phone
- High-definition video streaming
- Wide-angle view
- Supports night-vision view
- Motion detection
- Two-way audio for communication
- Built-in Mic & Speaker
- Supports pan/tilt – move security camera from your App so that you can monitor
- Built-in Micro SD (TF) card memory card slot (supports up to 128GB card, memory card not included)
- App available on iOS and Android

## **SAFETY INSTRUCTIONS**

- Keep the camera away from extreme heat sources or fire.
- Do not use the camera if it has been dropped or damaged in any way.
- Repairs to electrical equipment should only be performed by a qualified electrician. Improper repairs may place the user at serious risk.
- Keep the camera free from dust, lint etc.
- Do not use this camera for anything other than its intended use.
- Keep the camera out of reach of children.
- This product is not a toy.

## **Instructions for use**

### **Quick Start Guide**

1. Connect the Type-C power cord to the USB input power port of the camera and insert the other end into a suitable USB power source.
2. It will take about 15 seconds for the camera to start up.

## Compatibility

This HD Smart Wi-Fi Camera is compatible with the App – “TuyaSmart”



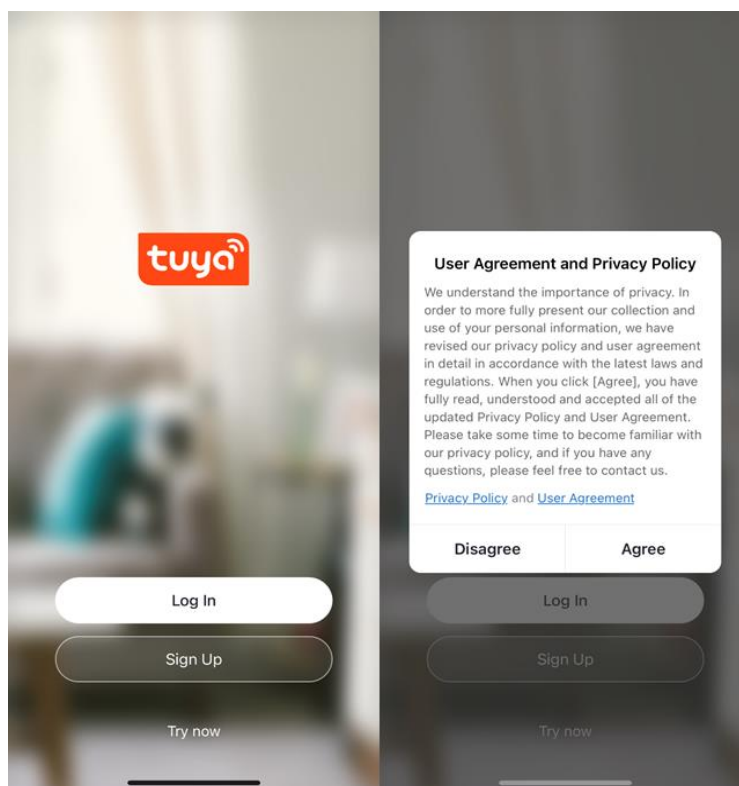
This HD Smart Wi-Fi Camera and App is compatible with the devices using iOS 8.0 and above with Wi-Fi option, or Android 5.0 and above with Wi-Fi option.

This device does not currently support 5GHz WiFi bands. Please see that your phone is connected to 2.4GHz WiFi band of your router.

## Operating Instructions

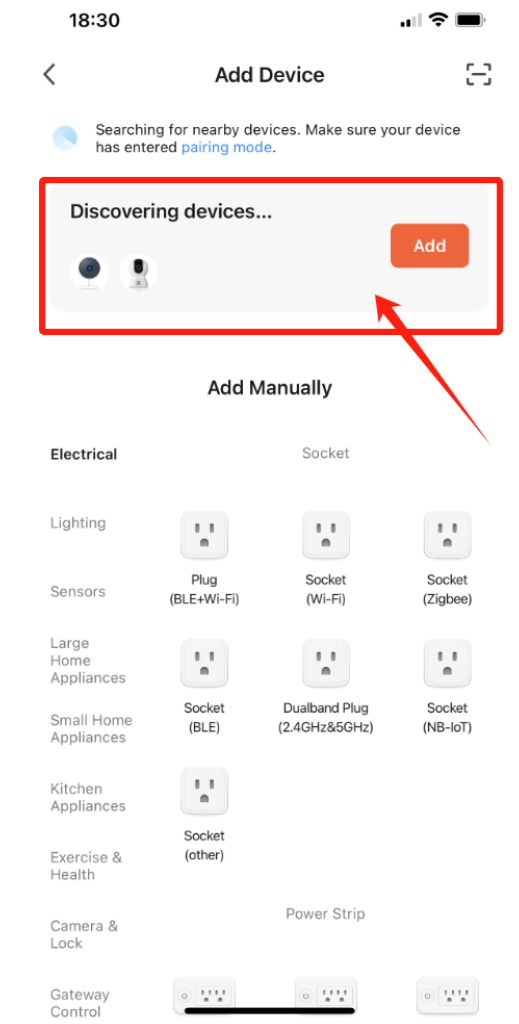
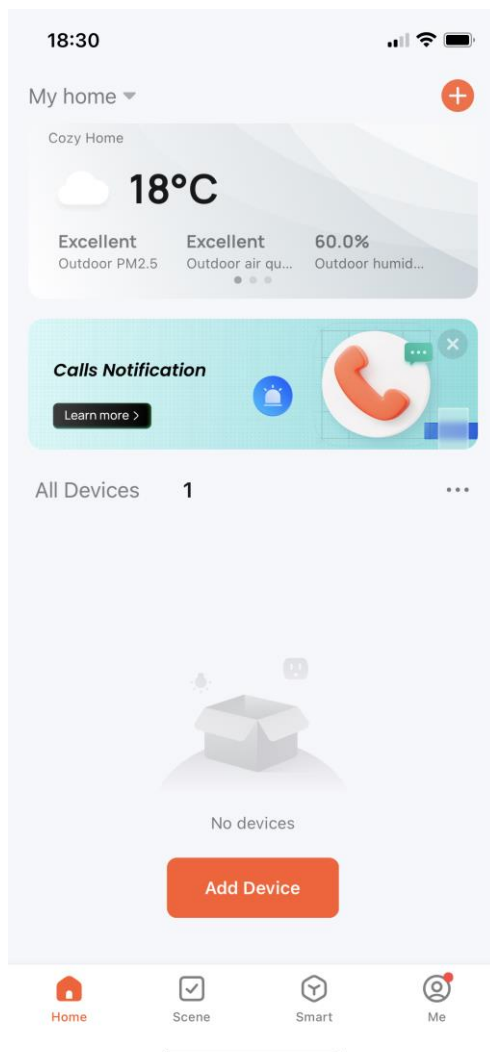
### Login to the App:

1. Search for, and download / install “tuyaSmart Home” App on your phone or tablet.
2. Open the App, and it will ask you to register your device. Select your country, enter your email, get Verification Code and input your favorite password to confirm.

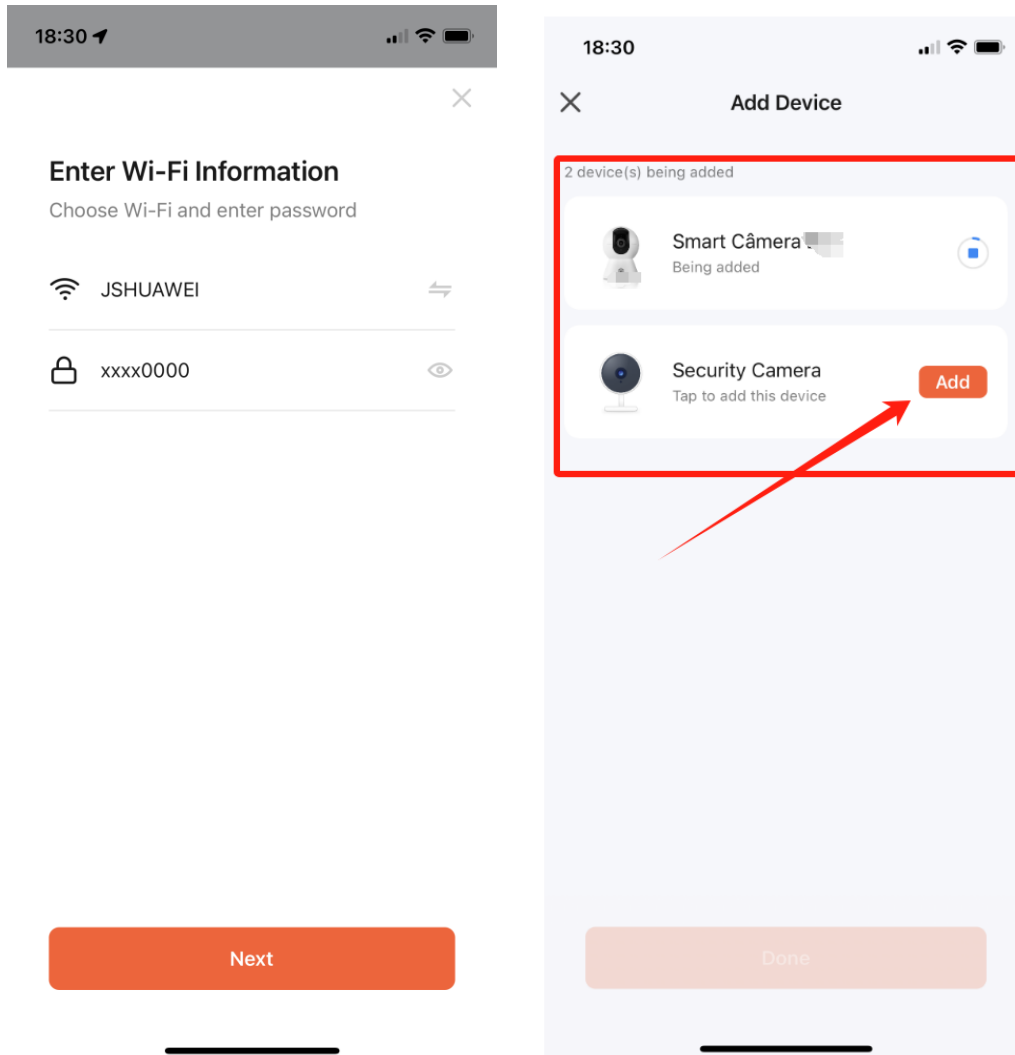


## Adding a new HD Smart Wi-Fi Camera:

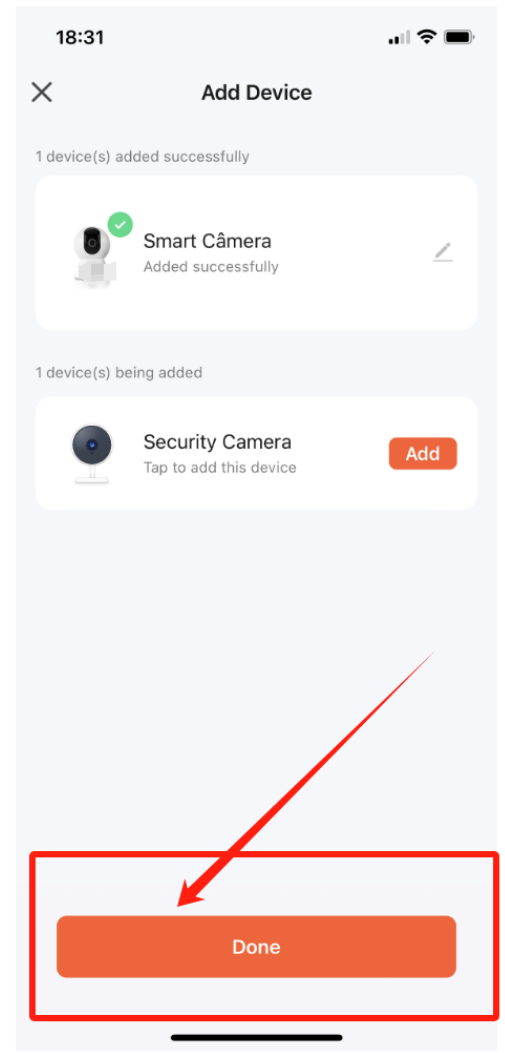
1. Turn on Wi-Fi of your phone, and then connect to the local/home network.
2. Power on: Connect the USB power to the camera.
3. Wait for about 10 seconds until you hear voice message 'camera starts', then further 20 - 30 seconds later 'please configure network'.  
[Note: If reset is required, use the reset pin to press the Reset (as shown on "Description of Parts" above) for several seconds until the camera starts to beep.]
4. Turn on the "tuyaSmart Home" App, click '+', and the device/Cameras will be Automatic discovery on your App.



5. Select the same connected Wi-Fi network of your phone or tablet and input password of the Wi-Fi, then tap 'Next'. Then choose the Device/Camera you want to pair



6. The HD Smart Wi-Fi Camera is trying to connect to the App Now. Once connected successful, the App will show 'Done' , click "Done" then enter next step



- Storage Settings, Remove Device...etc.

**Note: Micro SD Card (not included) will perform Event Recording or Non-Stop Recording. Upon reaching its maximum storage capacity, it will automatically record over the oldest recording. This will erase the oldest recording, and replace it with the new recording. For longer access to important recordings, it is recommended to move the recordings from the Micro SD card to your computer etc. Recorded videos can be seen under the Playback icon.**

**Detection Alarm Settings:** Tap on “Detection Alarm Settings” can then turn on/off the Motion Detection Alarm. Once this is turned on, if any motion is detected you will get notification. Notifications can be checked on the “Message” tab of the App. Motion Alarm Sensitivity Level can be set:

- Low Sensitivity – Records any movements within 3 meters

- Medium Sensitivity – Records any movements within 6 meters
- High Sensitivity – Records any movements within 9 meters

**Remove Device:** Tap on “Remove Device” if you’d like to delete this camera.

## Care and maintenance

Read the following recommendations before using the product.

- Don’t use abrasive cleaning solvents to clean the camera.
- Do not expose the camera to extremely high or low temperature as this will shorten the life of electronic devices, destroy the battery or distort certain plastic parts.
- Don’t dispose of the camera in fire as it will result in an explosion.
- Don’t expose the camera to contact with sharp objects as this will cause scratches and damage.
- Don’t let the camera fall on the floor. The internal circuit might get damaged.
- Don’t attempt to disassemble the camera as it may get damaged if you are not professional.

## FCC Instructions

Changes or modifications not expressly approved by the party responsible for compliance could void the user’s authority to operate the product.

NOTE: This product has been tested and found to comply with the limits for a Class B digital device, pursuant to Part 15 of the FCC Rules. These limits are designed to provide reasonable protection against harmful interference in a residential installation. This product generates, uses and can radiate radio frequency energy and, if not installed and used in accordance with the instructions, may cause harmful interference to radio communications. However, there is no guarantee that interference will not occur in a particular installation. If the product does cause harmful interference to radio or television reception, which can be determined by turning the equipment off and on, the user is encouraged to try to correct the interference by one or more of the following measures:

- Reorient or relocate the receiving antenna.
- Increase the separation between the product and receiver.
- Connect the product into an outlet on a circuit different from that to which the receiver is connected.
- Consult the dealer or an experienced radio/TV technician for help.

The device complies with Part 15 of the FCC Rules. Operation is subject to the following two conditions: (1) this device may not cause harmful interference, and (2) this device must accept any interference received, including interference that may cause undesired operation.

This equipment complies with FCC radiation exposure limits set forth for an uncontrolled environment. This equipment should be installed and operated with minimum distance 20cm between the radiator & your body.