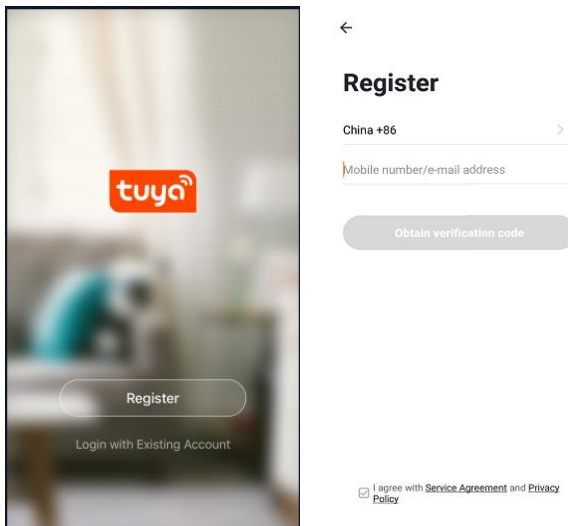

User Manual Tuya smart IP Camera

1. Download APP

Search and download "Tuya smart" in major application markets or scan the QR Code below to download the APP.



2. Register with your mobile number/E-mail then login

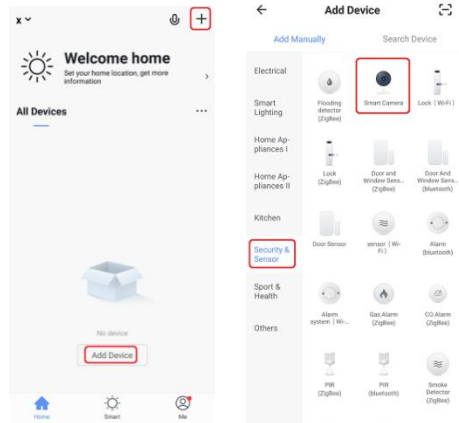


3. Configuration: QR code network configuration

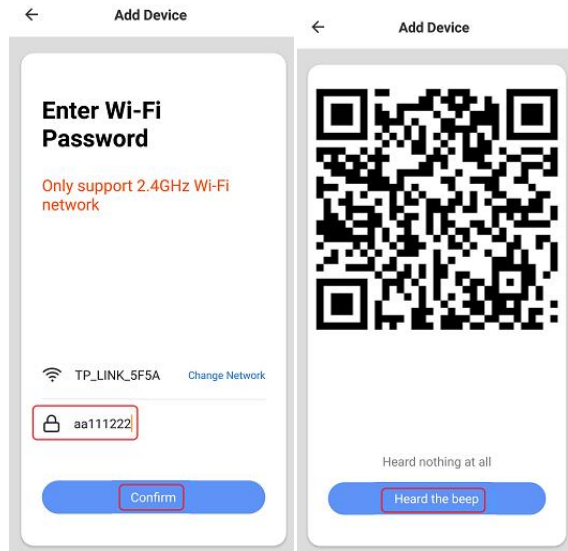
Tap “Add Device” or the icon “+” in the top right corner

Choose “Smart Camera” in the Device type

Make sure the indicator is flashing quickly and click “next step”

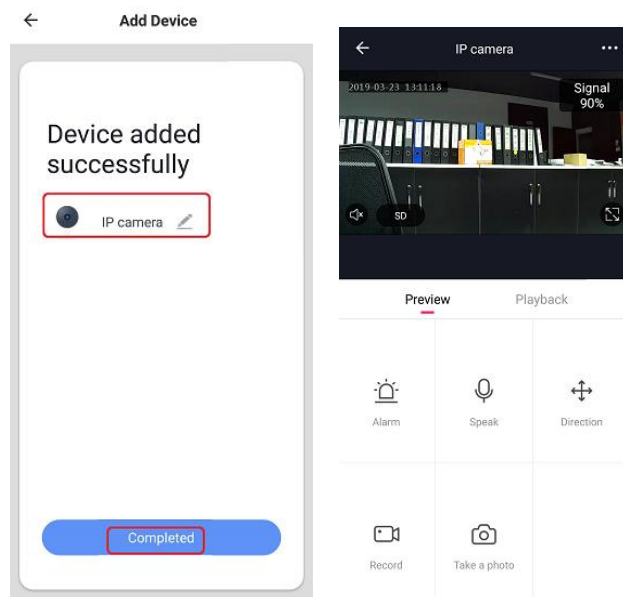


Enter your WiFi password and Click “+”, When you tap Continue, the mobile phone displays a QR code, Hold the camera 15 to 20cm in front of the mobile phone for the camera to scan the QR code Please click “heard the beep” when the device have voice tips



4. view the live stream

Choose a name for the device and click “Done” to view the live stream



This device complies with part 15 of the FCC Rules. Operation is subject to the following two conditions:

- (1) This device may not cause harmful interference, and
- (2) this device must accept any interference received, including interference that may cause undesired operation.

FCC warning

Any Changes or modifications not expressly approved by the party responsible for compliance could void the user's authority to operate the equipment.

Note: This equipment has been tested and found to comply with the limits for a Class B digital device, pursuant to part 15 of the FCC Rules. These limits are designed to provide reasonable protection against harmful interference in a residential installation. This equipment generates uses and can radiate radio frequency energy and, if not installed and used in accordance with the instructions, may cause harmful interference to radio communications. However, there is no guarantee that interference will not occur in a particular installation. If this equipment does cause harmful interference to radio or television reception, which can be determined by turning the equipment off and on, the user is encouraged to try to correct the interference by one or more of the following measures:

- Reorient or relocate the receiving antenna.
- Increase the separation between the equipment and receiver.
- Connect the equipment into an outlet on a circuit different from that to which the receiver is connected.
- Consult the dealer or an experienced radio/TV technician for help.

This equipment complies with FCC radiation exposure limits set forth for an uncontrolled environment. This equipment should be installed and operated with minimum distance 20cm between the radiator & your body.