



深圳星源创科技有限公司

Shen Zhen Xing Yuan Chuang Technology Co., Ltd

规格承认书 Approval Sheet

客户名称 Customer	顶匠 TOPDON	日期 Data	2022/08/15
产品名称 Product	BT+WiFi antenna	客户机型 Models	TC003
料号 P/N	F577-21LB-090	客户料号 Customer P/N	
规格描述 Specifications	Black FPC; MI-113 generation terminals black coaxial line; L=90mm		

供应商承认签印 Vender Approved By	客户承认签印 Customer Approved By
	
Checked By:	Checked By:
Approval By:	Approval By:

文件修订履历表

版本 Version	修订内容 Revise The Content	修订人 Revused	核准 Approval	修订日期 Date	备注 Note

地址：深圳市宝安区福永镇福海街道塘尾股份商务大厦1506

Address: 1506, Tangwei Business Building, Fuhai Street, Fuyong Town, Baoan District, Shenzhen

Tel: 0755-82103639 QQ: 487580356 Email: Stephdeng_Vis@126.com



Content		
NO.	Proect	Page NO.
1	Specification	4
2	Antenna Placement	5
3	Test Data	6~~7
4	Antenna Assembly	8
5	Inspection Standard	9
6	Outgoing Inspection Report	10
7	Packing Specification	11



Specification

1.1 Electrical Properties

Characteristics	Specifications
Working Band	2.4GWiFi
Antenna From	PIFA
Impedance	50 Ω
Polarization	Linear
Peak Effi	51%@2.4G
Peak Gain	1.65dBi@2.4G

1.2 Physical Properties

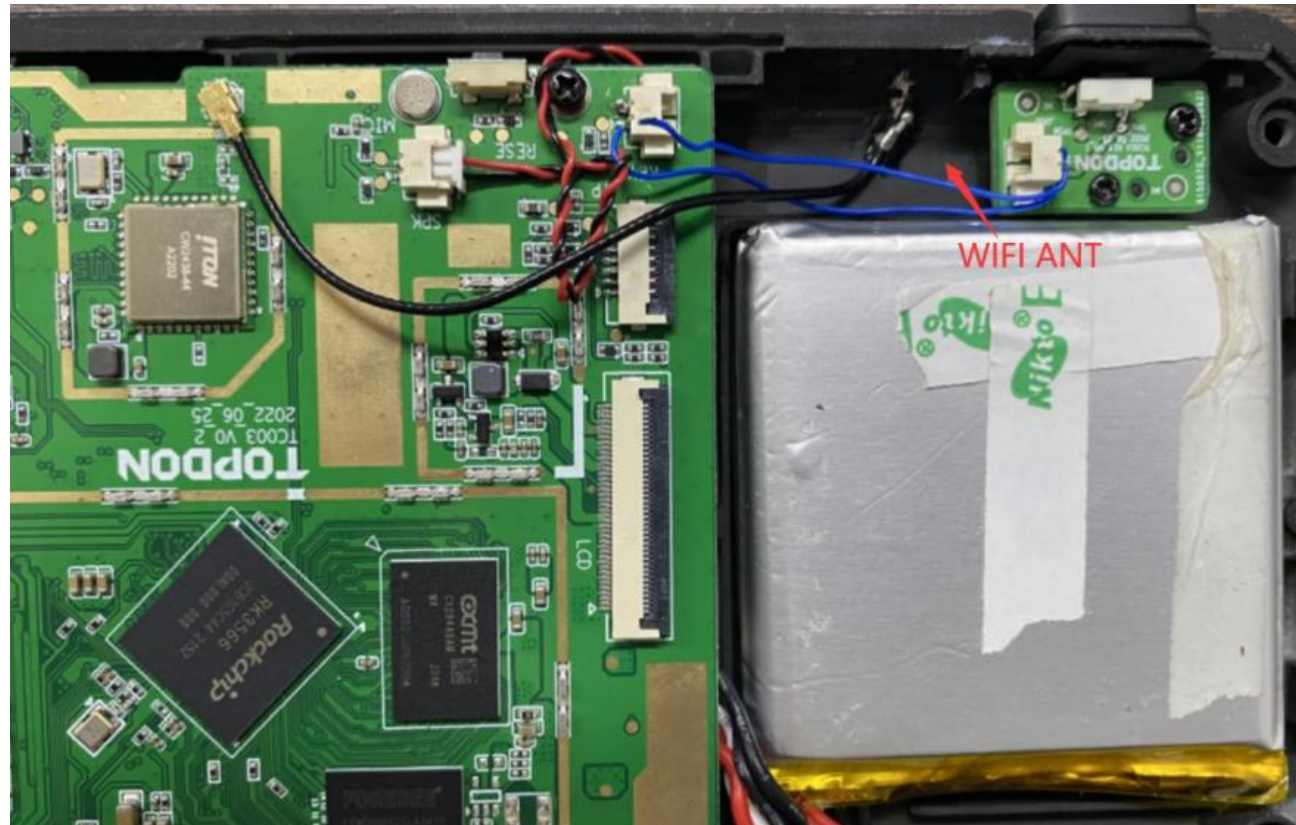
Characteristics	Specifications
Operating Temp	-10°C~+60°C
Storage Temp	-10°C~+70°C
Humidity	10~95%RH



深圳星源创科技有限公司

Shen Zhen Xing Yuan Chuang Technology Co., Ltd

Antenna Placement



地址：深圳市宝安区福永镇福海街道塘尾股份商务大厦1506

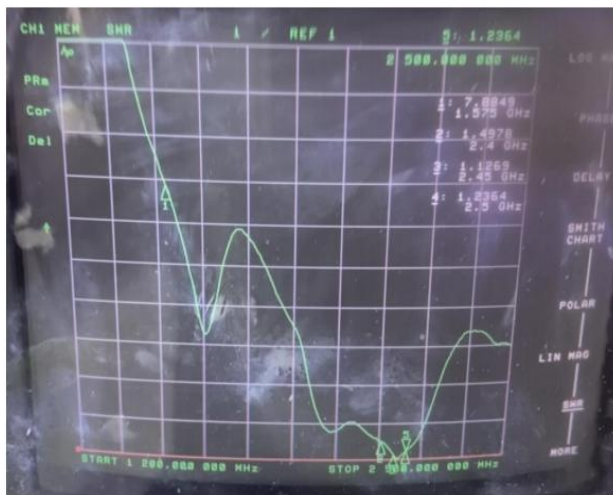
Address: 1506, Tangwei Business Building, Fuhai Street, Fuyong Town, Baoan District, Shenzhen

Tel: 0755-82103639 QQ: 487580356 Email: Stephdeng_Vis@126.com



Test Data

S11 Parameter-VSWR



Frequency (MHZ)	2400	2450	2483
VSWR	1.49	1.12	1.23
Return Loss (DB)	-14.01	-24.58	-19.53

WiFi Active Test Data

802.11b	Frequency	TRP		TIS	
	2412	CH1 11Mbps	13.85	CH1 11Mbps	-78.57
2437	CH6 11Mbps	13.07	CH6 11Mbps	-78.63	
2467	CH11 11Mbps	13.2	CH11 11Mbps	-78.87	

地址：深圳市宝安区福永镇福海街道塘尾股份商务大厦1506

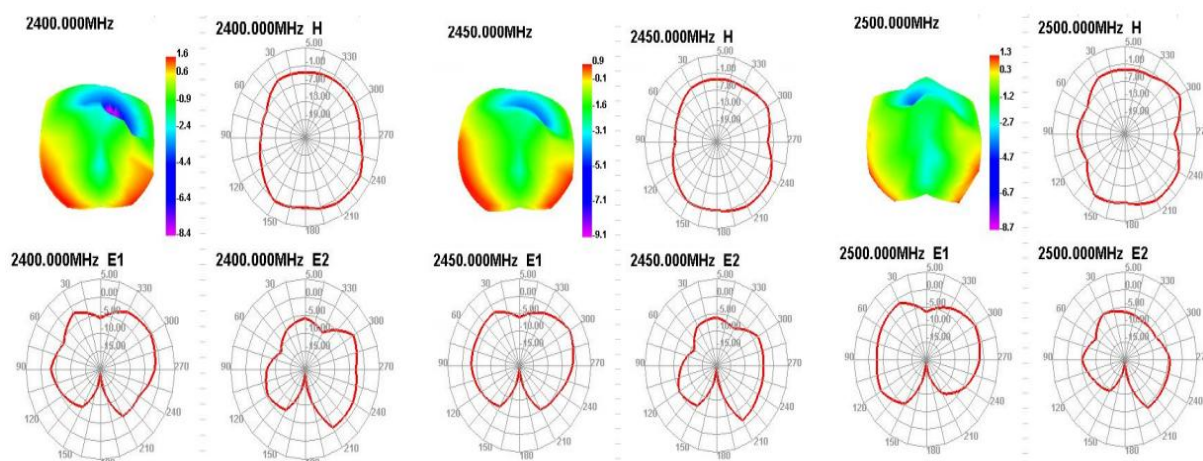
Address: 1506, Tangwei Business Building, Fuhai Street, Fuyong Town, Baoan District, Shenzhen

Tel: 0755-82103639 QQ: 487580356 Email: Stephdeng_Vis@126.com

Efficiency Table

Passive Test For WIFI2.4								
Freq (MHz)	Effi (%)	Effi (dB)	Gain (dBi)	Gain (dBd)	UHIS (%)	DHIS (%)	Max (dB)	Min (dB)
2400	51.28	-2.9	1.65	-0.5	28.471	22.808	1.65	-22.47
2410	51.47	-2.88	1.62	-0.53	28.536	22.937	1.62	-25.89
2420	49.05	-3.09	1.33	-0.82	27.145	21.909	1.33	-25.5
2430	46.82	-3.3	0.95	-1.2	25.769	21.051	0.95	-19.98
2440	48.1	-3.18	0.82	-1.33	26.27	21.834	0.82	-21.1
2450	50.07	-3	0.94	-1.21	27.072	23.001	0.94	-23.19
2460	50.9	-2.93	0.96	-1.19	27.407	23.492	0.96	-24.94
2470	49.32	-3.07	0.91	-1.24	26.382	22.937	0.91	-25.12
2480	50.47	-2.97	1.11	-1.04	26.749	23.723	1.11	-23.5
2490	49.87	-3.02	1.26	-0.89	26.269	23.605	1.26	-22.39
2500	48.94	-3.1	1.34	-0.81	25.598	23.346	1.34	-21.49

Radiation Pattern

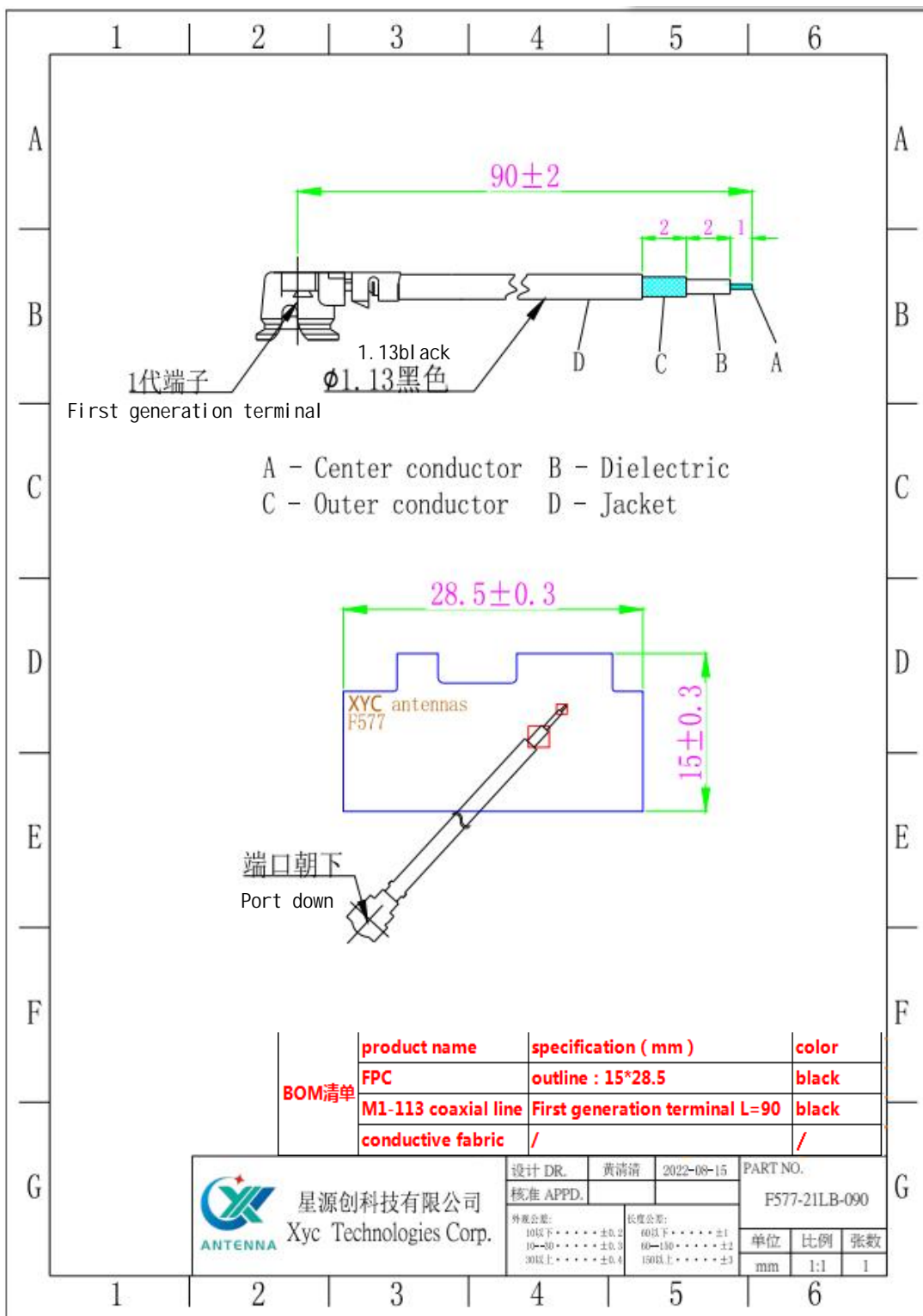


地址：深圳市宝安区福永镇福海街道塘尾股份商务大厦1506

Address: 1506, Tangwei Business Building, Fuhai Street, Fuyong Town, Baoan District, Shenzhen

Tel: 0755-82103639 QQ: 487580356 Email: Stephdeng_Vis@126.com

Antenna Assembly



地址：深圳市宝安区福永镇福海街道塘尾股份商务大厦1506

Address: 1506, Tangwei Business Building, Fuhai Street, Fuyong Town, Baoan District, Shenzhen

Tel: 0755-82103639 QQ: 487580356 Email: Stephdeng_Vis@126.com

Packing Specification

