

836-D006-31000 快  
引 包 装 \_DOI006\_Rlink  
J2534\_ 快引 \_ 海外版  
80g 书纸 \_198x210mm  
\_ 风琴折

## Quick User Guide



### RLink J2534

All-in-one Pass-thru Device

Thank you for purchasing the TOPDON RLink J2534. This quick user guide will walk you through the basic setup and operation of the RLink J2534. Please carefully read all the instructions before use. For further information, please download the detailed user manual via [www.topdon.com/products/RLink-J2534](http://www.topdon.com/products/RLink-J2534).

TEL	86-755-21612590
EMAIL	SUPPORT@TOPDON.COM
WEBSITE	WWW.TOPDON.COM
FACEBOOK	@TOPDONOFFICIAL
X	@TOPDONOFFICIAL



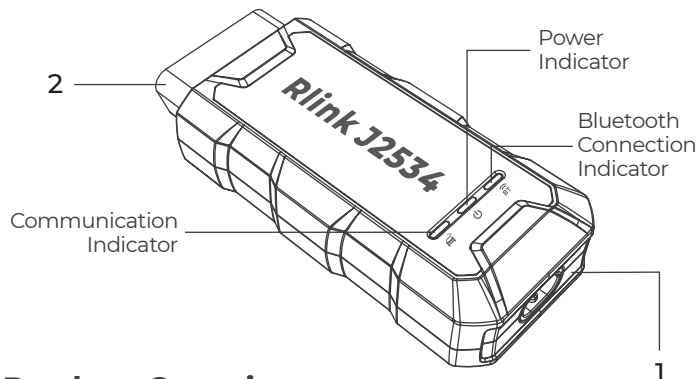
#### FCC Statement

Any changes or modifications not expressly approved by the party responsible for compliance could void the user's authority to operate the equipment. This device complies with Part 15 of the FCC Rules. Operation is subject to the following two conditions:

- (1) this device may not cause harmful interference, and
- (2) this device must accept any interference received, including interference that may cause undesired operation.

Note: This equipment has been tested and found to comply with the limits for a Class B digital device, pursuant to Part 15 of the FCC Rules. These limits are designed to provide reasonable protection against harmful interference in a residential installation. This equipment generates, uses, and can radiate radio frequency energy, and if not installed and used in accordance with the instructions, may cause harmful interference to radio communications. However, there is no guarantee that interference will not occur in a particular installation. If this equipment does cause harmful interference to radio or television reception, which can be determined by turning the equipment off and on, the user is encouraged to try to correct the interference by one or more of the following measures:

- Reorient or relocate the receiving antenna.
- Increase the separation between the equipment and receiver.
- Connect the equipment into an outlet on a circuit different from that to which the receiver is connected.
- Consult the dealer or an experienced radio/TV technician for help.



## Product Overview

1. USB Type-B Port
2. OBD-II Diagnostic Port

### LED Indicators

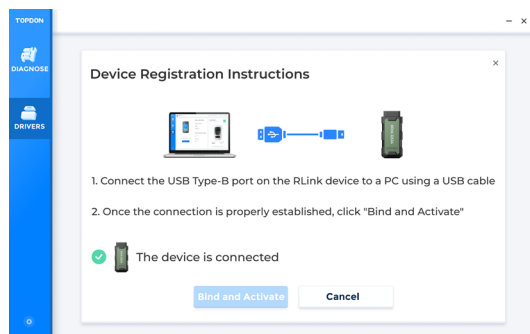
Bluetooth Connection Indicator	Solid Blue: Bluetooth connected
Power Indicator	Solid Red: power on
Communication Indicator	Flashing Green: communicating with the vehicle

## Register Device & Download Software

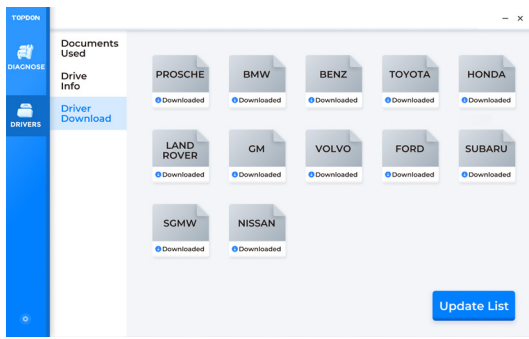
- ① Download and install the RLink Platform software to your PC. Go to [www.topdon.com](http://www.topdon.com). Click **Support > Integrated Diagnostic**

**Tools.** Then click **RLink Lite** and click 

- ② Launch the RLink Platform software. Register or log in to your TOPDON account. Follow the instructions to connect the RLink J2534 to a PC using the supplied USB 2.0 cable. Then click **Bind and Activate** to register the RLink J2534.  
**Note: Upgrade the firmware to the latest version after binding the device.**

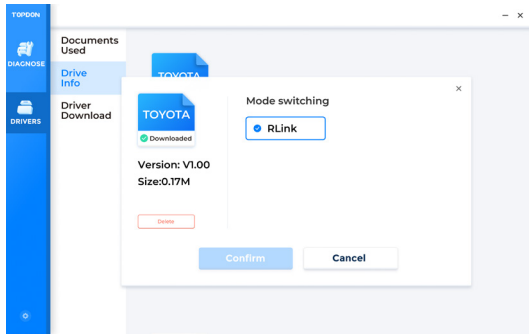


- ③ Download the specific driver for the OEM diagnostic software.  
**Note: The driver list is subject to the actual configuration of the product.**



**Note:** To avoid driver incompatibility, do not download drivers that are not related to the OEM software.

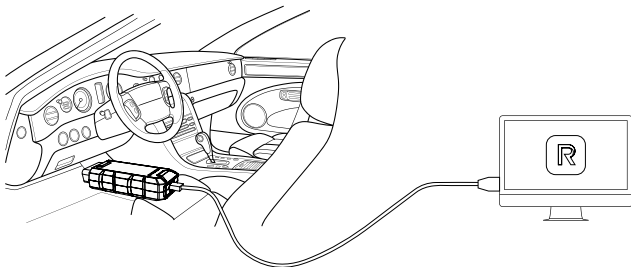
- Click **Drive Info** after the driver is downloaded. Then click to open the driver you just downloaded and choose **RLink**.



**Note:** The illustrations and screenshots used in this Quick User Guide may slightly differ from the actual product due to ongoing product improvements.

## Connect Device & Start Diagnosing

- Connect the RLink J2534 to the vehicle's Data Link Connector (DLC). The vehicle's DLC is usually located under the dashboard.  
**Note:** Ensure the ignition is OFF before plugging in the unit.



- Ensure that the communication is normal after the connection is completed. Then open the OEM diagnostic software and select **RLink** as the diagnostic interface.

- Turn the ignition to the "ON" position. You are now ready to start diagnosing the vehicle.

## FAQ

**Q:** Can the RLink Platform be used on the iOS system?


**A:** Not at the moment.

**Q:** What systems support installing the RLink Platform?

**A:** Windows 7, 8, 10 or higher (64-bit). 32-bit is not supported.

**Q:** How to download the RLink J2534 driver?

**A:** Go to [www.topdon.com](http://www.topdon.com). Click **Support > Integrated Diagnostic**

**Tools.** Then click **RLink Lite** and click  to download

the RLink Platform and install it to your PC. Then register and activate the RLink J2534.

Select **DRIVERS > Driver Download** to download the required driver for RLink J2534.

**Note:** To avoid affecting the stability of program operation, please download the corresponding driver according to the OEM software of your computer.

**Q:** Why does it prompt that the email address is already registered?

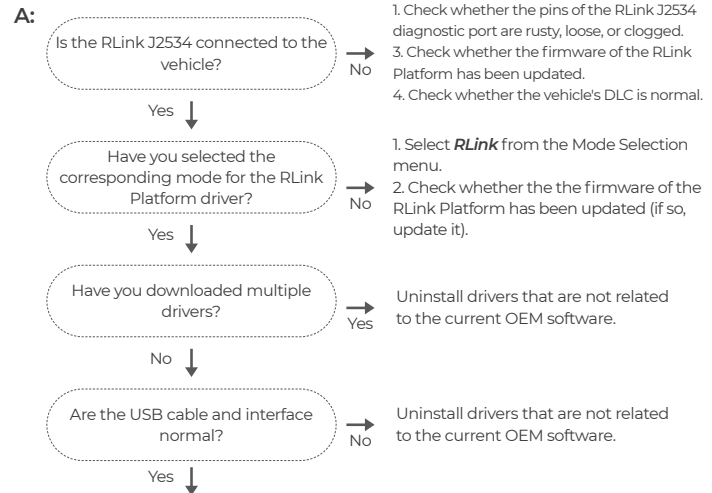
**A:** Please check if this account is already registered on another TOPDON device.

If you have already registered, just log in to the account and bind RLink J2534.

**Q:** Why does it prompt that the device is bound to another account?

**A:** Please choose the correct account to log in or contact TOPDON technical service to unbind. (Note: one device can only be bound to one account)

**Q:** The RLink Platform prompts that the vehicle is not connected. How to solve it?



Check whether the USB cable is damaged, aged, flattened, or the interface is corroded. Check whether the computer USB interface is normal, or try again with another interface.

Check whether the RLink J2534 hardware is normal (such as broken, water ingress).

正面

背面