

IA.0331.LB.2FI (X10-WIFI/GPS)

Antenna Specification

1. Application:

This application shall apply for antenna unit which shall be used such as automotive, conventional communications, smart home, etc..

1. Electrical Specification:

Those specifications were specially defined for customer's model, and all characteristics were measured under the model's handset testing jig .

2-1. Frequency Band:

Frequency Band	MHz
GPS/WIFI2.4/5.8G	1575.42/2400-2500/5150-5850

2-2. Impedance

50 ohm nominal


2-3. VSWR

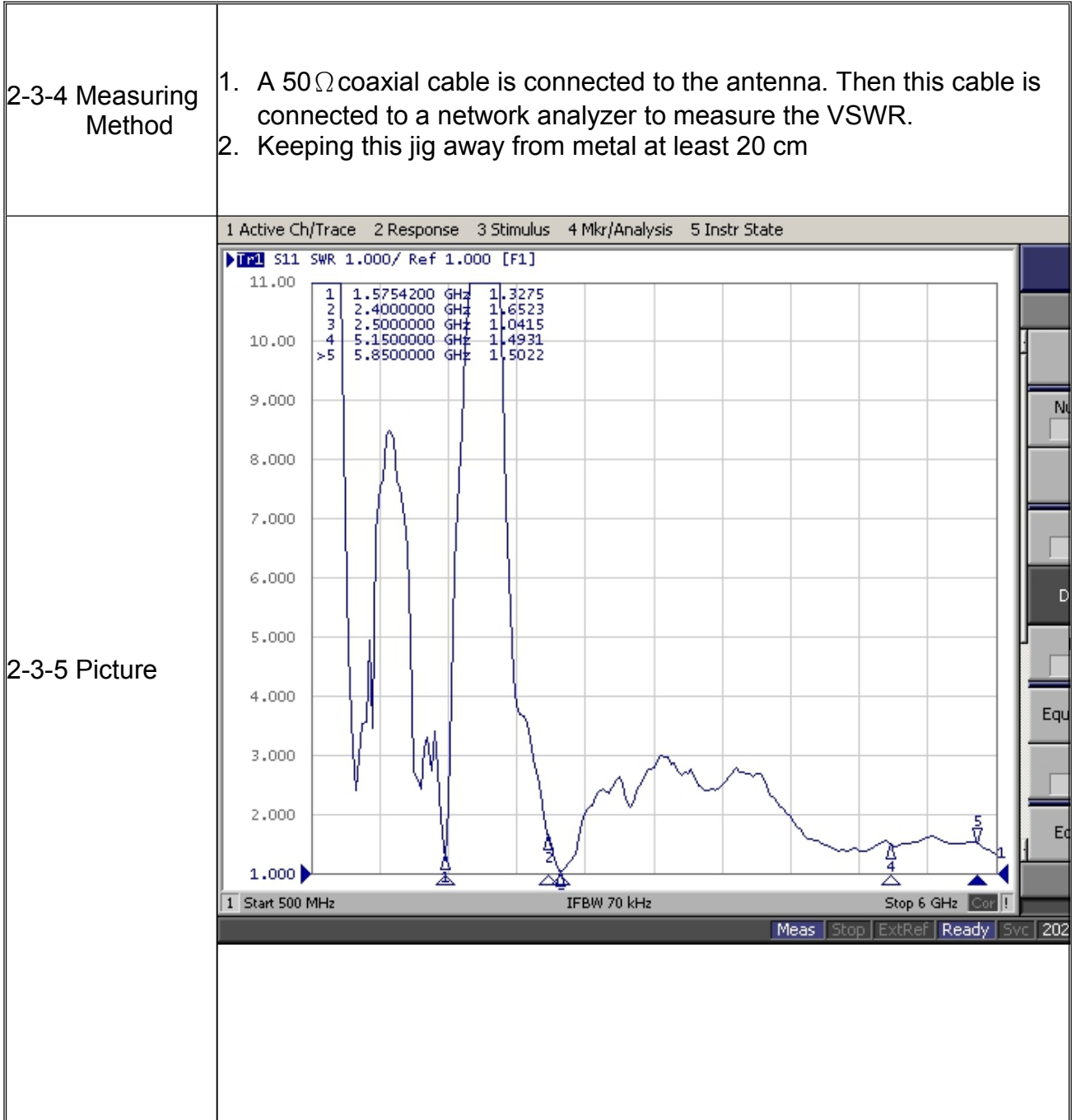
2-3-1.Measurement frequency points and VSWR value

Frequency Band(MHz)	1575.42	2400	2500	5150	5850
2-3-3. Typical Value:	1.32	1.65	1.10	1.49	1.50

2-3-2. VSWR

Frequency Band(MHz)	1575.42	2400	2500	5150	5850
2-3-3. Typical Value:	≤2	≤2	≤2	≤2	≤2

UNLESS OTHER SPECIFIED TOLERANCES ON :			KINGRF TECHNOLOGY CO., LTD.
X=±	X.X=±		
ANGLES=±		HOLEDIA=±	
SCALE :	UNIT : mm	THIS DRAWINGS AND SPECIFICATIONS ARE THE PROPERTY OF KINGRF TECHNOLOGY CO.,LTD.AND SHALL NOT BE REPRODUCED OR USED AS THE BASIS FOR THE MANUFACTURE OR SALE OF APPARATUS OR DEVICES WITHOUT PERMISSION	
DRAWN BY: LI	CHECKED BY: YS		
DESIGNED BY: De wen	APPROVED BY: YS		
TITLE : IA.0331.LB.2FI Antenna Specification			SPEC REV. P0



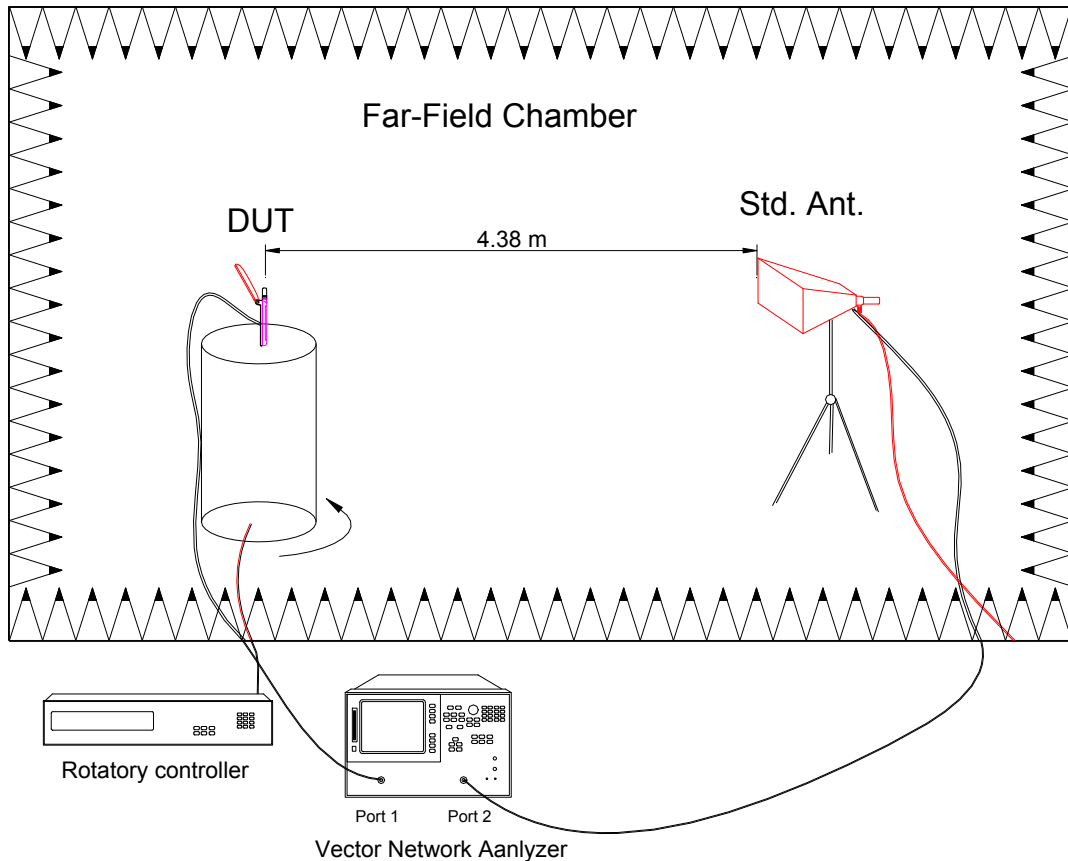
UNLESS OTHER SPECIFIED TOLERANCES ON : X=± X.X=± X.XX=± ANGLES=± HOLEDIA=±			KINGRF TECHNOLOGY CO., LTD.
SCALE :	UNIT : mm	THIS DRAWINGS AND SPECIFICATIONS ARE THE PROPERTY OF KINGRF TECHNOLOGY CO.,LTD.AND SHALL NOT BE REPRODUCED OR USED AS THE BASIS FOR THE MANUFACTURE OR SALE OF APPARATUS OR DEVICES WITHOUT PERMISSION	
DRAWN BY: LI	CHECKED BY: YS		
DESIGNED BY: De wen	APPROVED BY: YS		
TITLE : IA.0331.LB.2FI Antenna Specification		SPEC REV. P0	

2-4. Efficiency and Gain

4-5.1 Measure method

1. Using a low loss coaxial cable to link a standard handset jig
2. Fixed this handset jig on chamber's rotator plane
3. Linking jig into network analyzer port and using a probing horn antenna to collect data.
4. Using another standard gain horn antenna to calibrated those data

4-5.2 Chamber definition



1. An anechoic chamber (7mx4mx3m) which satisfied far-field condition was applied to avoid multi-path effect
2. The quite room region is 40cmx40cmx40cm at the center of rotator
3. The distance between DUT and standard antenna is 4.38 m
4. Probing antenna (9120D horn antenna) and standard gain horn antenna (BBHA9120 LPF 700MHz ~6GHz)

UNLESS OTHER SPECIFIED TOLERANCES ON :			KINGRF TECHNOLOGY CO., LTD.
$X = \pm$ $X.X = \pm$ $X.XX = \pm$ ANGLES = \pm HOLEDIA = \pm			
SCALE :	UNIT : mm	THIS DRAWINGS AND SPECIFICATIONS ARE THE PROPERTY OF KINGRF TECHNOLOGY CO.,LTD.AND SHALL NOT BE REPRODUCED OR USED AS THE BASIS FOR THE MANUFACTURE OR SALE OF APPARATUS OR DEVICES WITHOUT PERMISSION	
DRAWN BY: LI	CHECKED BY: YS		
DESIGNED BY: De wen	APPROVED BY: YS		
TITLE : IA.0331.LB.2FI Antenna Specification			SPEC REV. P0

WIFI 2.4G

Freq (MHz)	Effi (%)	Effi (dB)	Gain (dBi)
2400	38.79	-2.11	0.95
2410	50.81	-2.16	0.5
2420	47.75	-4.23	0.8
2430	48.87	-3.11	1
2440	45.2	-4.53	0.8
2450	48.84	-4.11	0.8
2460	39.49	-4.38	0.85
2470	49.81	-3.03	0.9
2480	43.92	-3.57	1
2490	48.91	-3.11	0.85
2500	46.41	-3.33	0.9

WIFI 5G

Freq (MHz)	Effi (%)	Effi (dB)	Gain (dBi)
5150	49.38	-3.06	0.95
5200	46.01	-3.37	0.5
5250	44.72	-3.5	0.8
5300	52.82	-2.77	1
5350	56.75	-2.46	0.8
5400	66.85	-1.75	0.5
5450	72.2	-1.41	0.8
5500	57.08	-2.44	1
5550	49.35	-3.07	0.8
5600	45.27	-3.44	0.8
5650	76.54	-1.16	0.85
5700	79.94	-0.97	0.9
5750	49.69	-3.04	1
5800	73.77	-1.32	0.85
5850	72.69	-1.39	0.9

UNLESS OTHER SPECIFIED TOLERANCES ON :

 $X = \pm$ $X.X = \pm$ $X.XX = \pm$

 ANGLES = \pm HOLEDIA = \pm


KINGRF TECHNOLOGY CO., LTD.

SCALE :

UNIT : mm

DRAWN BY: LI

CHECKED BY: YS

DESIGNED BY: De wen

APPROVED BY: YS

THIS DRAWINGS AND SPECIFICATIONS ARE THE PROPERTY OF KINGRF TECHNOLOGY CO.,LTD.AND SHALL NOT BE REPRODUCED OR USED AS THE BASIS FOR THE MANUFACTURE OR SALE OF APPARATUS OR DEVICES WITHOUT PERMISSION

TITLE : IA.0331.LB.2FI Antenna Specification

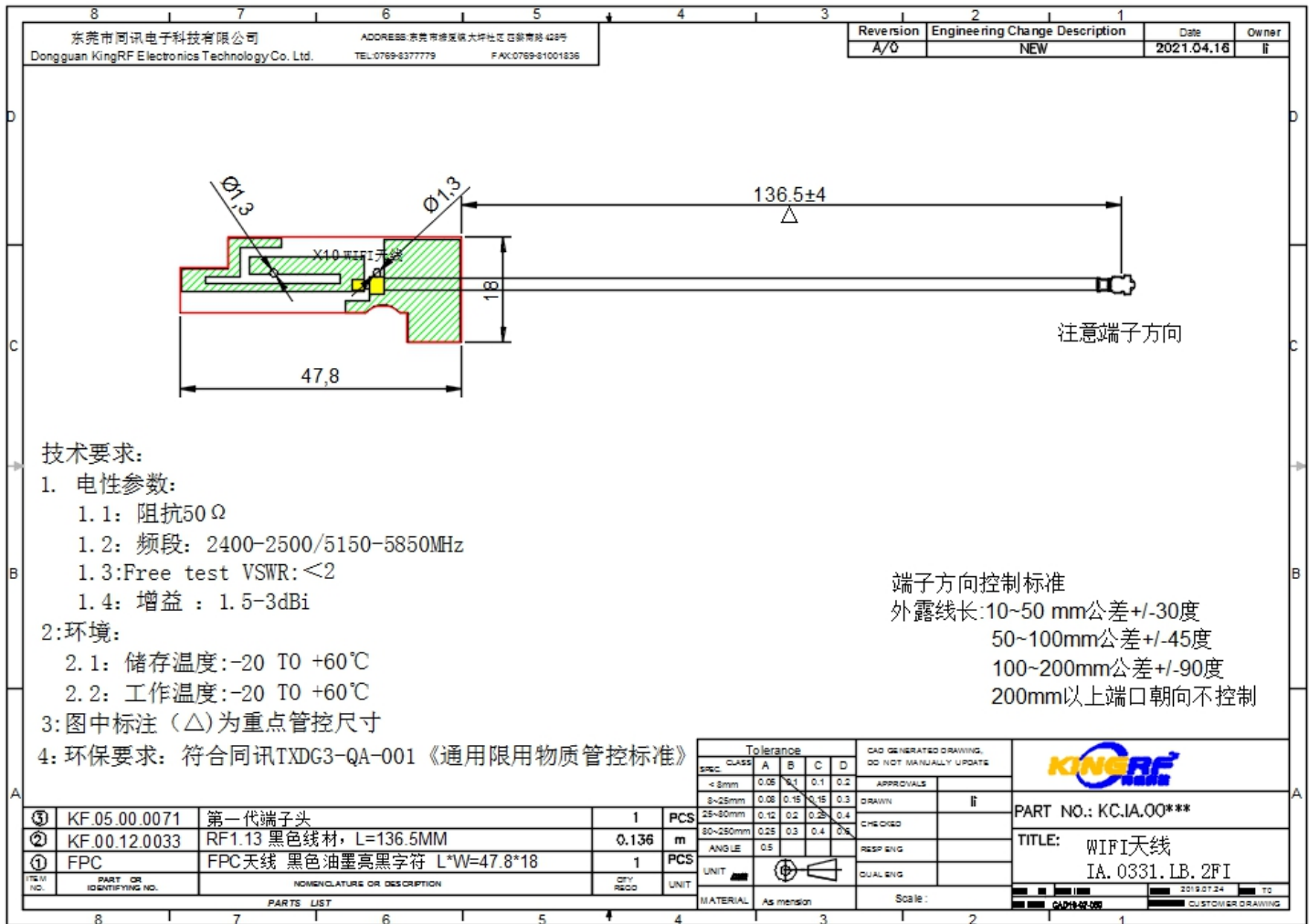
SPEC REV.

P0

3. Mechanical Specification:

3-1. Mechanical Configuration (Unit: mm)

The appearance of the antenna is according to drawing

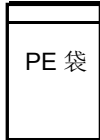
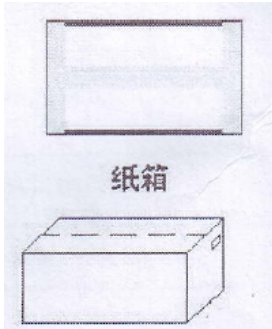


3-2. Connector appearance:

IPEX

UNLESS OTHER SPECIFIED TOLERANCES ON :			KINGRF TECHNOLOGY CO., LTD.
$X = \pm$ $X.X = \pm$ $X.XX = \pm$ ANGLES = ± HOLEDIA = ±			
SCALE :	UNIT : mm	THIS DRAWINGS AND SPECIFICATIONS ARE THE PROPERTY OF KINGRF TECHNOLOGY CO.,LTD.AND SHALL NOT BE REPRODUCED OR USED AS THE BASIS FOR THE MANUFACTURE OR SALE OF APPARATUS OR DEVICES WITHOUT PERMISSION	
DRAWN BY: LI	CHECKED BY: YS		
DESIGNED BY: De wen	APPROVED BY: YS		
TITLE : IA.0331.LB.2FI Antenna Specification			SPEC REV. P0

5.包装规格:

产品料号: XXX			
产品型号: XXX			
一、标签要求:			
需方	XXX		
供方	XXXXX		
物料编码	XX		
产品型号	XX		
数量/单	XXX PCS	出厂日期	X 年 X 月 X 日
备注/其他			
二、装箱要求:			
作业说明:			
1. 内包装:			
产品 XXpcs 一袋, 放入小 PE 袋;			
2. 外包装:			
XxPCS 一箱;			
3. 注意事项:			
a. 是否要增设隔板、珍珠棉;			
b. 标签的帖附, 如 ROHS 等;			

UNLESS OTHER SPECIFIED TOLERANCES ON :			KINGRF TECHNOLOGY CO., LTD.
X=±	X.X=±		
ANGLES=±		HOLEDIA=±	
SCALE :	UNIT : mm		
DRAWN BY: LI	CHECKED BY: YS		
DESIGNED BY: De wen	APPROVED BY: YS		
TITLE : IA.0331.LB.2FI Antenna Specification			THIS DRAWINGS AND SPECIFICATIONS ARE THE PROPERTY OF KINGRF TECHNOLOGY CO.,LTD.AND SHALL NOT BE REPRODUCED OR USED AS THE BASIS FOR THE MANUFACTURE OR SALE OF APPARATUS OR DEVICES WITHOUT PERMISSION
			SPEC REV. P0