



Antenna Specification

Product Name: WIRELESS BATTERY LOAD TESTER

Model No.: BT20

Frequency Band:

Frequency Band	MHz
BT	2400-2500

深圳顶匠科技有限公司

TOPDON TECHNOLOGY Co., Ltd.

深圳市前海深港合作区南山街道兴海大道 3040 号前海世茂金融中心二期 2005

Unit 2005 20/F, No.3040 Xinghai Avenue, Qianhai Shima

Tower, Qianhai Shenzhen-Hong Kong Cooperation Zone, Shenzhen, P.R.China

CONTENTS

1. Project Information.....	3
1.1. Appearance and Dimensions.....	3
2. Electrical Characteristics.....	4
2.1. Test Environment Conditions.....	4
2.2. Testing principle.....	4
2.3. Antenna passive test data.....	5
2.3.1 Test system.....	5
2.3.2 Antenna efficiency and gain.....	6
2.3.3 Antenna Radiation Pattern.....	6

Revision history

Rev	Date	State
A1	2022-9-9	First Edition

Change the content

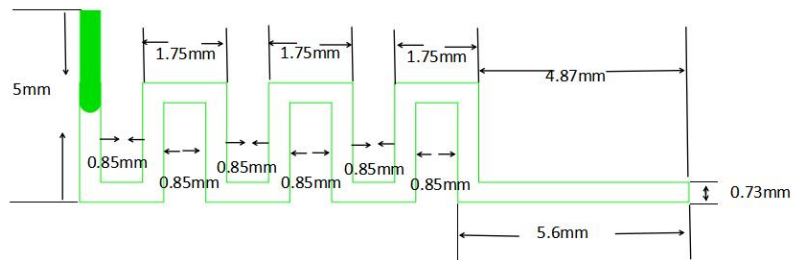
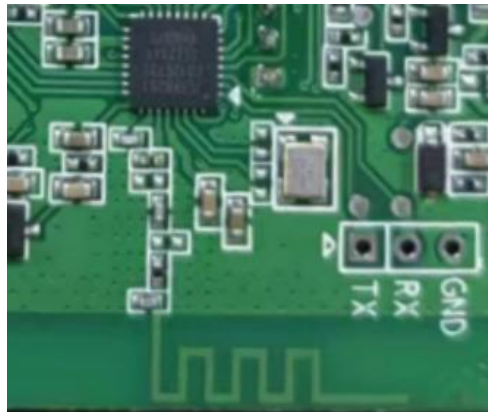
First change:

Before the change:

After change:

1. Project Information

1.1 Appearance and Dimensions



For Bluetooth Applications

	Dimension (mm)
L	15.81
W	5
T	1oz

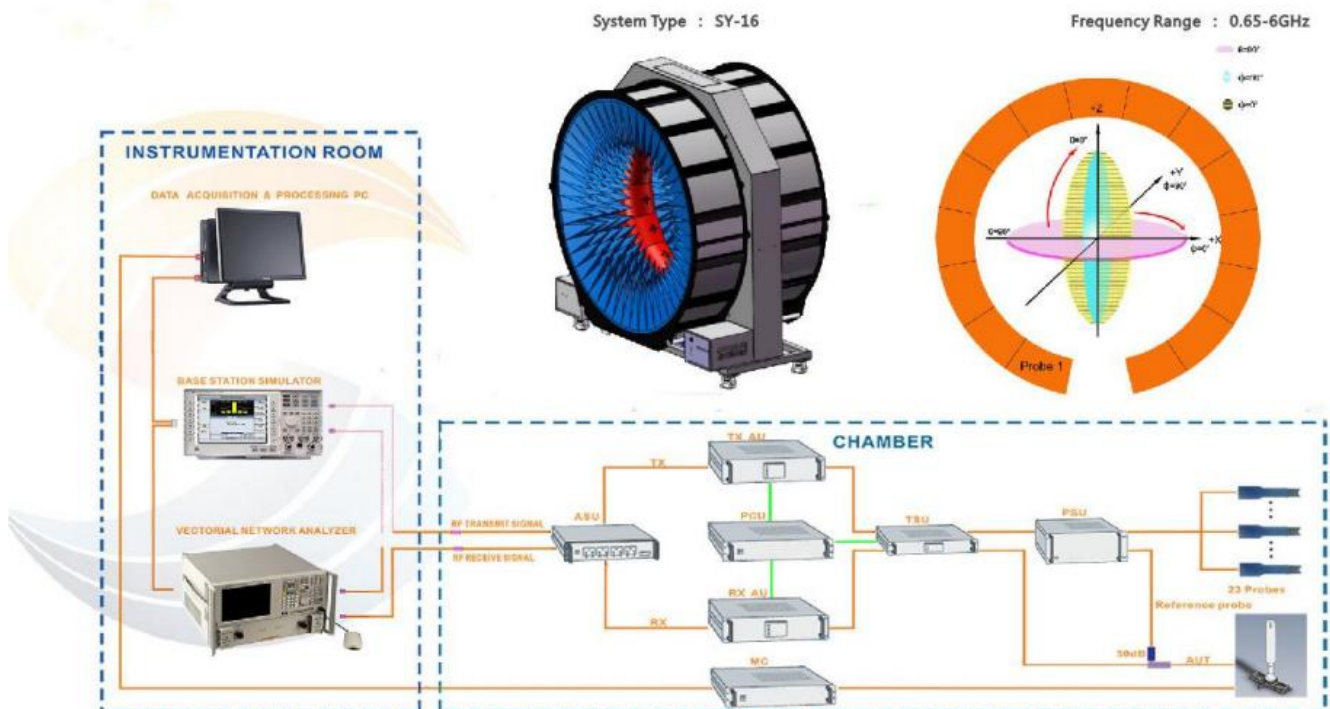
2. Electrical Characteristics

2.1 Test Environment Conditions

Temperature	24.1°C
Humidity	58%RH
Pressure	100.15kPa

2.2 Testing principle

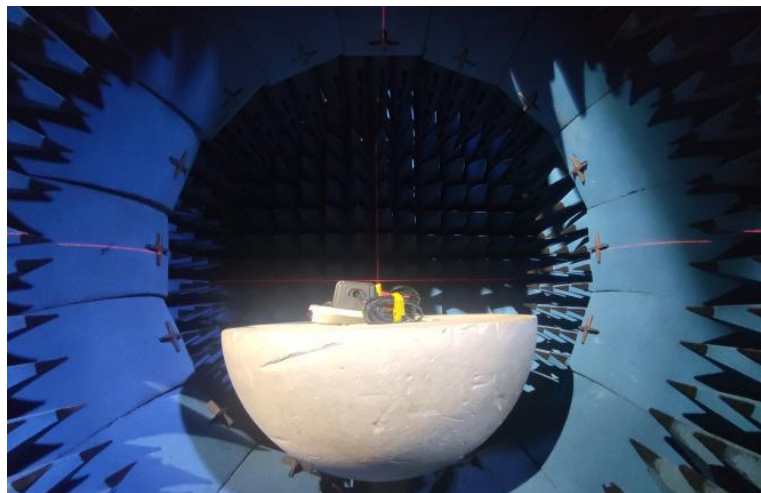
Multi-Probe OTA Measurement System



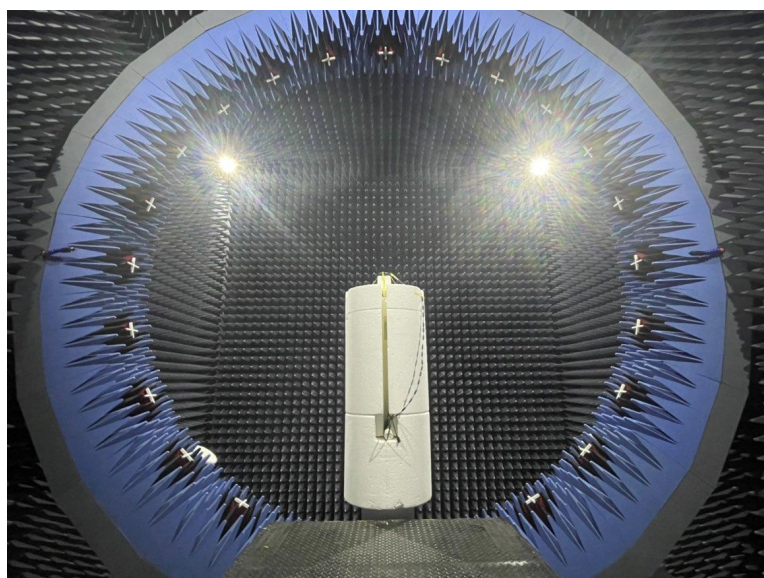
2.3 Antenna passive test data

2.3.1 Test system

Planform



Front view

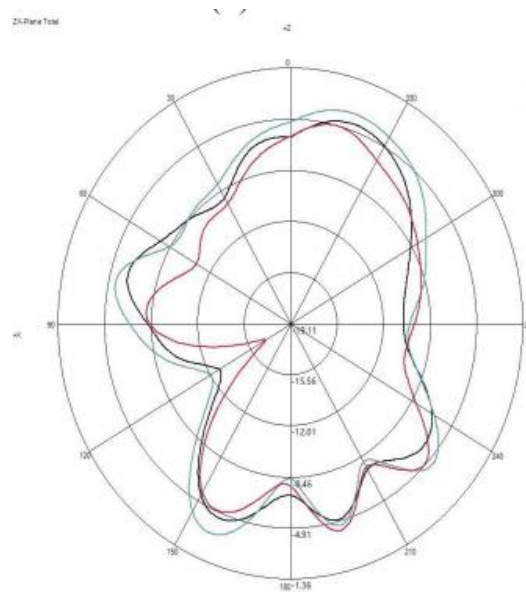


2.3.2 Antenna efficiency and gain

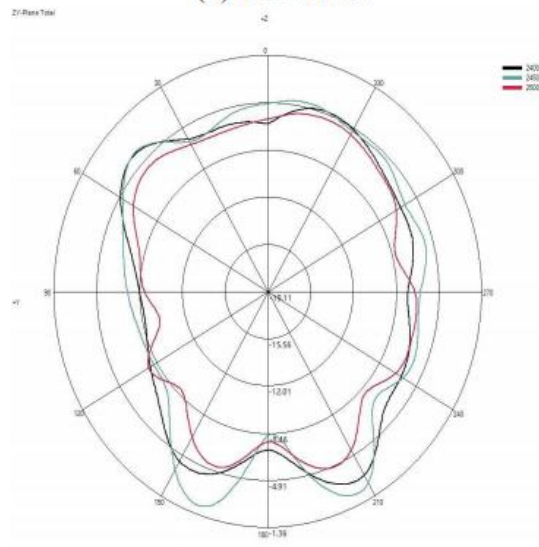
Frequency/MHz	2400	2410	2420	2430	2440	2450	2460	2470	2480	2490	2500
Peak Gain/dBi	-1.90	-1.76	-1.51	-1.55	-1.50	-1.36	-1.65	-2.13	-2.43	-2.80	-2.95
Efficiency/%	26.73	27.34	27.92	27.21	27.22	28.33	27.70	26.68	25.11	23.36	21.30

2.3.3 Antenna Radiation Pattern

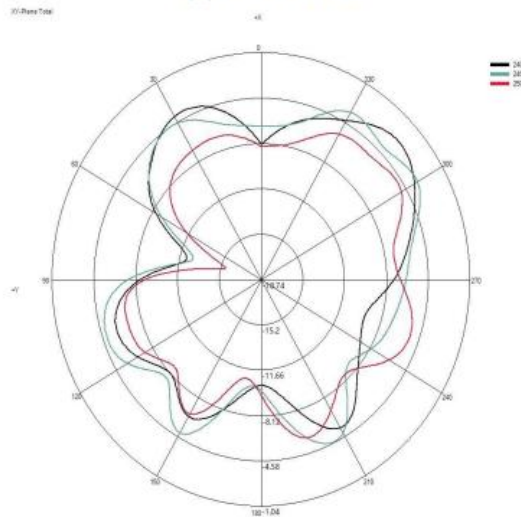
(1) X-Z Plane:



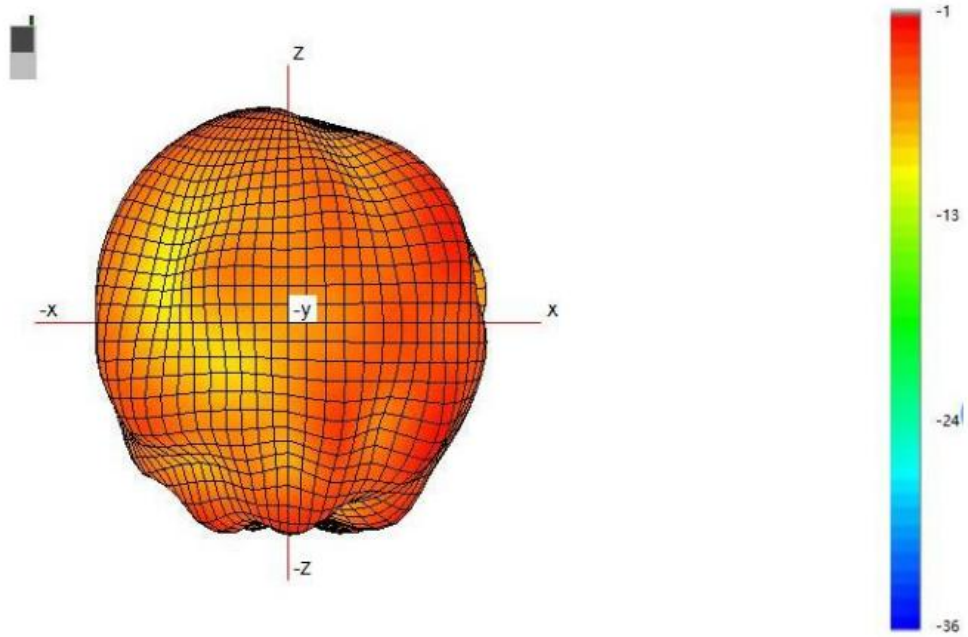
(2) Y-Z Plane:



(3) X-Y Plane:



(4) Typical Free Space 3D Radiation Pattern at 2.45GHz:



-----End-----

(The following is blank)