



承认书

APPROVAL SHEET

客户名称: 深圳市元征科技股份有限公司
CUSTOMER NAME.

客户料号: 102230326
CUSTOMER Part No.

同讯料号:
PRODUCT Part No.

产品名称: IA. 00211. LA. 3FI
PRODUCT NAME.

产品规格: WIFI 2.4G FPC天线 L=124MM
SPECIFICATION

日期: 2019年12月17日
DATE:

供货商		
Supplier		
拟制	审核	批准
DESIGNER	CHECKED BY	APPROVED BY
d w i n	y u p i n g	M a c r o
日期		

客户承认		
CUSTOMER APPROVAL		
检验	审核	批准
INSPECTOR	CHECKED BY	APPROVED BY
日期		

供货商名称: 东莞市同讯电子科技有限公司

供货商地址: 东莞市塘厦大坪社区四黎南路428号同讯科技工业园

电话: Tel: +86 0769-8307-7779 Fax: +86 0769-8100-1836

IA.00211.LA.3FI

Antenna Specification

1. Application:

This application shall apply for antenna unit which shall be used such as automotive, conventional communications, smart home, etc..

1. Electrical Specification:

Those specifications were specially defined for customer's model, and all characteristics were measured under the model's handset testing jig .

2-1. Frequency Band:

Frequency Band	MHz
WIFI 2.4G	2400-2500

2-2. Impedance

50 ohm nominal


2-3. VSWR

2-3-1.Measurement frequency points and VSWR value

Frequency Band(MHz)	2400	2500		
2-3-3. Typical Value:	2.2	1.4		

2-3-2. VSWR

Frequency Band(MHz)	2400	2500		
2-3-3. Typical Value:	≤2	≤2		

UNLESS OTHER SPECIFIED TOLERANCES ON :			KINGRF TECHNOLOGY CO., LTD.
X=±	X.X=±		
ANGLES=±		HOLEDIA=±	
SCALE :	UNIT : mm		
DRAWN BY: LI	CHECKED BY: YS		
DESIGNED BY: De wen	APPROVED BY: YS		
TITLE : 2GX-GMS Antenna Specification			SPEC REV.
			P0

2-3-4 Measuring Method	<ol style="list-style-type: none"> 1. A 50Ω coaxial cable is connected to the antenna. Then this cable is connected to a network analyzer to measure the VSWR. 2. Keeping this jig away from metal at least 20 cm
2-3-5 Picture	

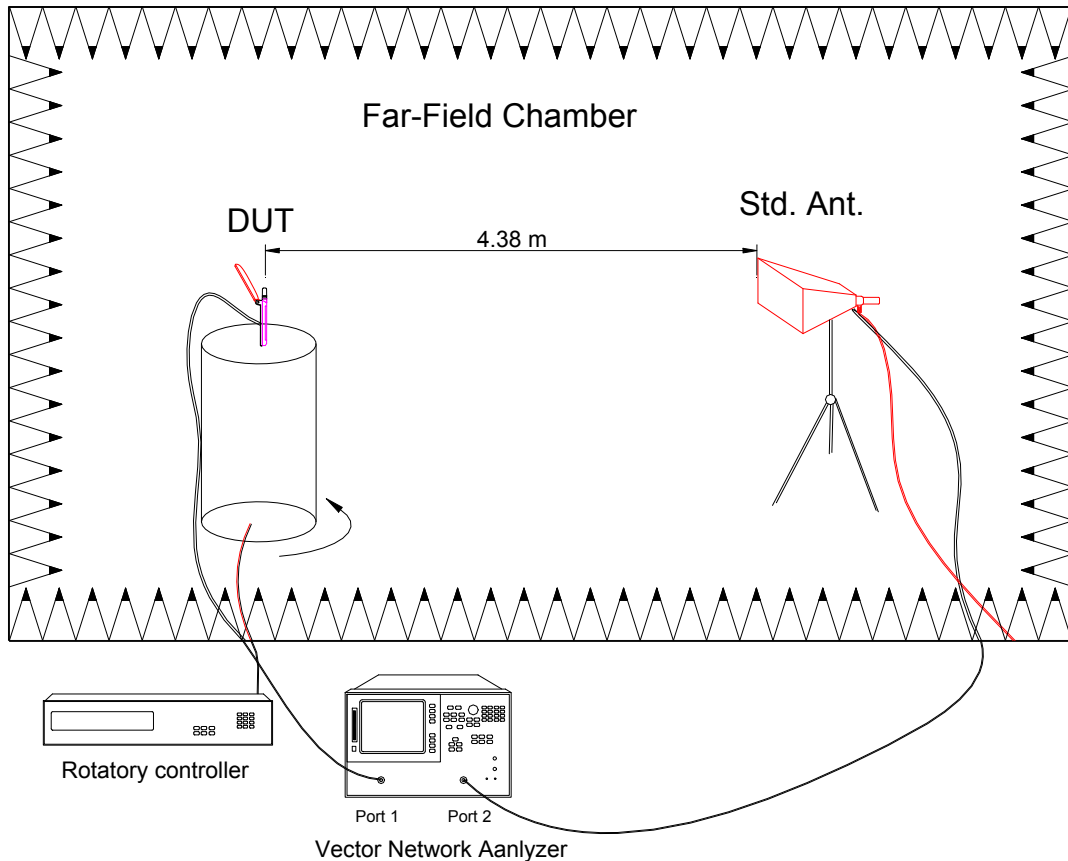
UNLESS OTHER SPECIFIED TOLERANCES ON : X=± X.X=± X.XX=± ANGLES=± HOLEDIA=±			KINGRF TECHNOLOGY CO., LTD.		
SCALE :	UNIT : mm			THIS DRAWINGS AND SPECIFICATIONS ARE THE PROPERTY OF KINGRF TECHNOLOGY CO.,LTD.AND SHALL NOT BE REPRODUCED OR USED AS THE BASIS FOR THE MANUFACTURE OR SALE OF APPARATUS OR DEVICES WITHOUT PERMISSION	
DRAWN BY: LI	CHECKED BY: YS	<table border="1"> <tr> <td data-bbox="1337 2056 1489 2085"> SPEC REV. </td> </tr> <tr> <td data-bbox="1337 2085 1489 2110"> P0 </td> </tr> </table>			
SPEC REV.					
P0					
DESIGNED BY: De wen		APPROVED BY: YS		TITLE : 2GX-GMS Antenna Specification	

2-4. Active test

4-5.1 Measure method

1. Using a low loss coaxial cable to link a standard handset jig
2. Fixed this handset jig on chamber's rotator plane
3. Linking jig into network analyzer port and using a probing horn antenna to collect data.
4. Using another standard gain horn antenna to calibrated those data

4-5.2 Chamber definition




1. An anechoic chamber (7mx4mx3m) which satisfied far-field condition was applied to avoid multi-path effect
2. The quite room region is 40cmx40cmx40cm at the center of rotator
3. The distance between DUT and standard antenna is 4.38 m
4. Probing antenna (9120D horn antenna) and standard gain horn antenna (BBHA9120 LPF 700MHz ~6GHz)

UNLESS OTHER SPECIFIED TOLERANCES ON : X=± X.X=± X.XX=± ANGLES=± HOLEDIA=±			KINGRF TECHNOLOGY CO., LTD.
SCALE :	UNIT : mm		
DRAWN BY: LI	CHECKED BY: YS		
DESIGNED BY: De wen	APPROVED BY: YS		
TITLE : 2GX-GMS Antenna Specification			SPEC REV. P0

2-4-1 3D Active test

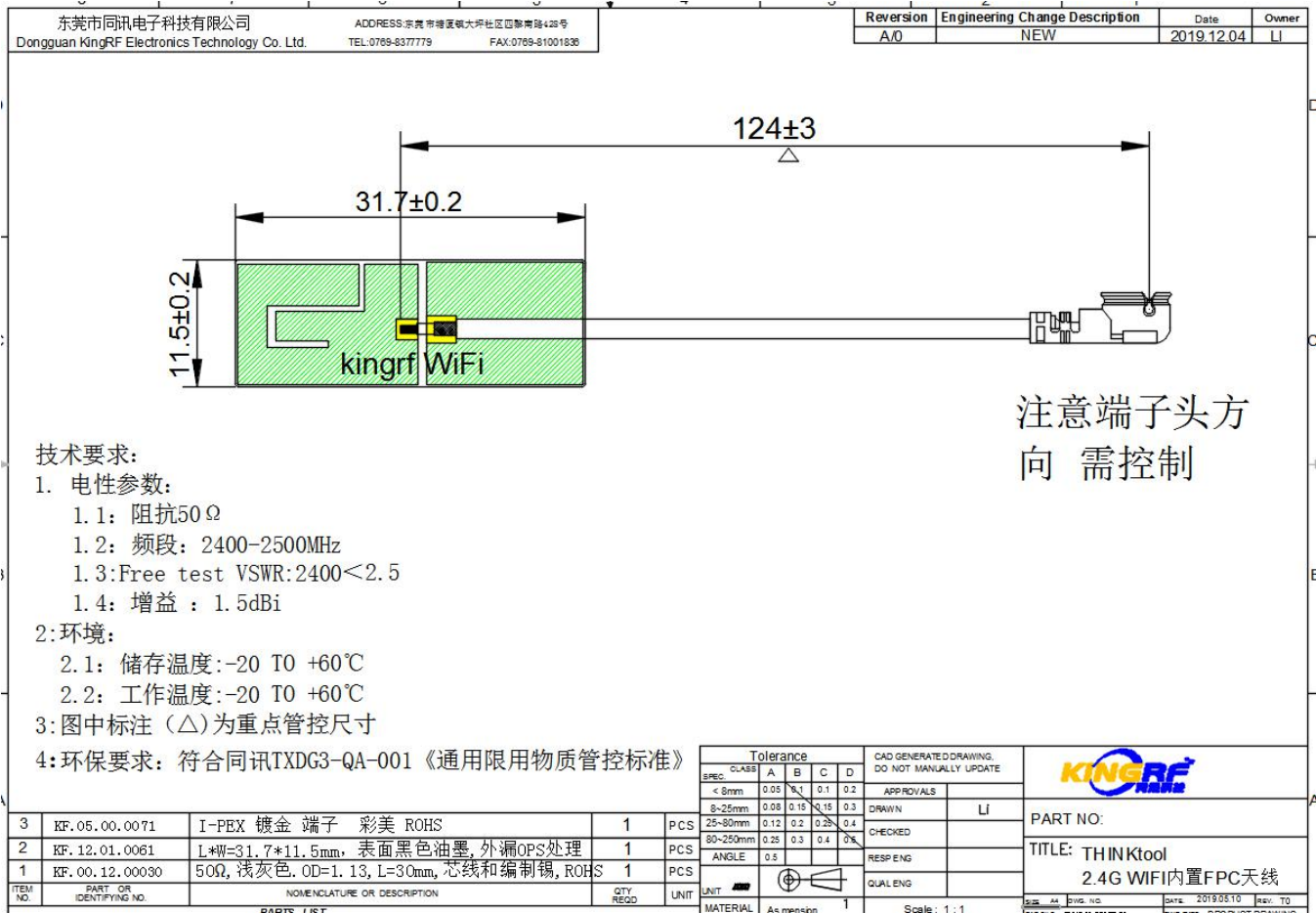
Passive Test For TEST-2.4G			
Freq (MHz)	Effi (%)	Effi (dB)	Gain (dBi)
2400	46.03	-3.37	1.71
2410	45.27	-3.44	1.48
2420	39.97	-3.98	0.85
2430	44.01	-3.56	1.25
2440	42.59	-3.71	0.99
2450	47.57	-3.23	1.45
2460	45.45	-3.42	1.25
2470	50.98	-2.93	1.81
2480	50.6	-2.96	1.72
2490	50.08	-3	1.77
2500	49.04	-3.09	1.62

UNLESS OTHER SPECIFIED TOLERANCES ON :			KINGRF TECHNOLOGY CO., LTD.
X=± X.X=± X.XX=± ANGLES=± HOLEDIA=±			
SCALE :	UNIT : mm	THIS DRAWINGS AND SPECIFICATIONS ARE THE PROPERTY OF KINGRF TECHNOLOGY CO.,LTD.AND SHALL NOT BE REPRODUCED OR USED AS THE BASIS FOR THE MANUFACTURE OR SALE OF APPARATUS OR DEVICES WITHOUT PERMISSION	
DRAWN BY: LI	CHECKED BY: YS		
DESIGNED BY: De wen	APPROVED BY: YS		
TITLE : 2GX-GMS Antenna Specification			SPEC REV.
			P0

3. Mechanical Specification:

3-1. Mechanical Configuration (Unit: mm)

The appearance of the antenna is according to drawing




3-2. Connector appearance:

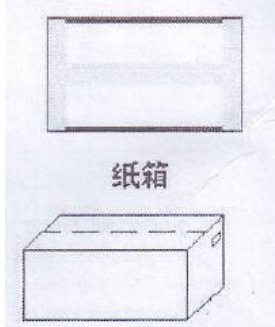
welding


UNLESS OTHER SPECIFIED TOLERANCES ON : X=± X.X=± X.XX=± ANGLES=± HOLEDIA=±			KINGRF TECHNOLOGY CO., LTD.
SCALE :	UNIT : mm	THIS DRAWINGS AND SPECIFICATIONS ARE THE PROPERTY OF KINGRF TECHNOLOGY CO.,LTD.AND SHALL NOT BE REPRODUCED OR USED AS THE BASIS FOR THE MANUFACTURE OR SALE OF APPARATUS OR DEVICES WITHOUT PERMISSION	
DRAWN BY: LI	CHECKED BY: YS		
DESIGNED BY: De wen	APPROVED BY: YS		
TITLE : 2GX-GMS Antenna Specification			SPEC REV. P0

5 .Packaging specification:

Product number: xxx			
Product model: xxx			
一、 Label requirements:			
Customer	xxx		
supplier	xxxxx		
Material coding	xx		
Product model	xx		
Number	XXX PCS	Factory date	X X X
Remarks			
二、 Boxing:			
Job description:			
1. Inner packaging:			
XXpcs A bag			
2. External packaging:			
Xx PCS ;			
3. Matters needing attention:			
a. Whether to add partition and pearl cotton;			
b. Label attachments, such as ROHS, etc.;			





UNLESS OTHER SPECIFIED TOLERANCES ON : X=± X.X=± X.XX=± ANGLES=± HOLEDIA=±			KINGRF TECHNOLOGY CO., LTD.
SCALE :	UNIT : mm	THIS DRAWINGS AND SPECIFICATIONS ARE THE PROPERTY OF KINGRF TECHNOLOGY CO.,LTD.AND SHALL NOT BE REPRODUCED OR USED AS THE BASIS FOR THE MANUFACTURE OR SALE OF APPARATUS OR DEVICES WITHOUT PERMISSION	
DRAWN BY: LI	CHECKED BY: YS		
DESIGNED BY: De wen	APPROVED BY: YS		
TITLE : 2GX-GMS Antenna Specification			SPEC REV. P0