

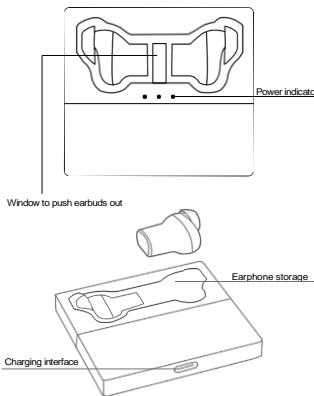
Note 20 ULTRA THIN TWS EARPHONE

USER MANUAL

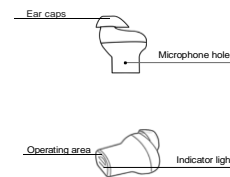


Dear users,
Thank you for choosing Note 20 ultra thin TWS earphone!
In order to better use this product, please read user's manual carefully in advance to ensure proper operation.

Product diagram



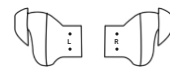
Headset display



On/off

Power on
Method 1 Take out the earbuds from the charging box, the earbuds will boot automatically.
Method 2 In the off state, press and hold the touch area of the earbuds in 4 seconds, the earbuds will turn on, and you can hear the prompt "power on".
Power off
Method 1 Put the earbuds into the charging box, and the earbuds will shut down automatically.
Method 2 In the power on state, press and hold the operating area in 4 seconds to power off.

Wear



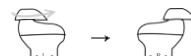
- Use your finger to reach the window of the earbuds charging box and take the earphone with the other hand.
- Please select the right and left earphones correctly. The earphones are marked with L (left) / R (right).



Hold the earphone handle and put it into your ears, and rotate it to adjust it to the most comfortable wearing condition.
Note: The earphones are equipped with three pairs of ear caps of different sizes. Please choose a comfortable ear cap according to the characteristics of the ear.

Tip

Everyone's ear shape and sensitivity will vary. If you still do not get the best wearing experience by referring to the above instructions, you can rotate the ear caps as shown in the figure and wear them, and you may be surprised.



Pairing

- Turn on the phone Bluetooth, search for the device NOTE 20 in the discovered device, and click Connect. The voice prompt "Connected".
- In pairing mode, when restart earphone after switch off, it will connect the phone automatically.

Note

When using a single ear, take one earbud out from the charging box, or make sure that the other earbuds is turned off, and then do the above.

Call

Answer the phone
Tap once any of the earbuds.
Hang up the phone
Tap twice on any of the earbuds.
Phone rejection
Long press any of the left or right earbuds about 2 seconds.

Listen to the music

Play / Pause
When music playing, tap once any of the left or right earbuds to pause playback, tap again to resume playback.
Previous
Tap the left earbuds twice.
Next
Tap the right earbuds twice.

Wake up voice assistant

Long press any of left or right earbuds about 3 seconds

Reset

In the off state, press and hold the touch for 11 seconds. After hearing the sound of "dididi", put it into the charging case, and when you take it out again, the two earphones will be paired again.

Charge

Earbuds
To put the earbuds into charging box, which indicator is blinking to display that earbuds is being recharged.
Charging box
Use the type-c charging cable included in the package to charge the charging case.

Functional operation

Operation function description			
	Function	operation	Prompt tone
Power	Power on	Remove from charging case / press for 4 seconds	Power on
	Power off	Put in the charging case / press for 4 seconds	Power off
	Answer the call	Touch once	Incoming call
Call	Hang up the phone	Touch twice	/
	Phone denied	Long press for 3 seconds	/
	Play	Touch once	/
Music	Pause	Touch once	/
	Next	Touch twice right earbud	/
	Previous	Touch twice left earbud	/
Voice assistant	Wake up/exit	Long press in 3 seconds	DI
	Reset	Press and hold for 11 seconds in the off state	DIDIDI

Main parameter	
Model	Note 20
BT version	5.0
Working frequency band	2.4-2.48GHz
Working time	4h
Transmission distance	±10m
The headset battery	45mAh*2
Charge box capacity	450mAh
Cumulative endurance	20h

Power shortage alert

Earbuds
Put the earphones into the charging case, the charging indicator of the charging case lights up, and it turns off after about 2 seconds. The earphone light is on, indicating that the earphones are being charged.

Charging box
When you put the earphone into the charging case, the indicator of the charging case will light up. When only one indicator light is on, it means that the battery is low. When no indicator is on, it means that the charging case has no electricity and needs to be charged.

Charging Earbuds
To put the earbuds into charging box, which indicator is blinking to display that earbuds is being recharged.

Charging box
Use the type-c charging cable included in the package to charge the charging case.

Matters needing attention

- Listening to earphone at high volumes can damage your hearing. Use only the minimum volume setting necessary to hear your conversation or music.
- Please keep the earphone, charging box and charger out of the reach of children. Children only use device with the involvement of a parent or guardian.
- Do not submerge the device in water for long time, and try to avoid doing as swimming, snorkelling, diving.
- Do not use this product in humid, dusty or near-magnetic fields in order to avoid electric malfunctions.
- Avoid expose the earbuds to minus 15°C or above 50°C.
- Avoid charging earbuds or charging box in the sub-zero.
- Do not keep earbuds in areas with direct sunlight, such as windowsills and dashboards.
- Do not take apart, modify and insert foreign objects into the device, as it may result in equipment damage.

FCC Statement

This device complies with part 15 of the FCC rules. Operation is subject to the following two conditions: (1) this device may not cause harmful interference, and (2) this device must accept any interference received, including interference that may cause undesired operation.

Changes or modifications not expressly approved by the party responsible for compliance could void the user's authority to operate the equipment.

NOTE: This equipment has been tested and found to comply with the limits for a Class B digital device, pursuant to part 15 of the FCC Rules. These limits are designed to provide reasonable protection against harmful interference in a residential installation. This equipment generates uses and can radiate radio frequency energy and, if not installed and used in accordance with the instructions, may cause harmful interference to radio communications. However, there is no guarantee that interference will not occur in a particular installation. If this equipment does cause harmful interference to radio or television reception, which can be determined by turning the equipment off and on, the user is encouraged to try to correct the interference by one or more of the following measures:

- Reorient or relocate the receiving antenna.
- Increase the separation between the equipment and receiver.
- Connect the equipment into an outlet on a circuit different from that to which the receiver is connected.
- Consult the dealer or an experienced radio/TV technician for help.

The device has been evaluated to meet general RF exposure requirement. The device can be used in portable exposure condition without restriction.