

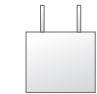
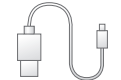









T2.00XXXXXX

Packing List

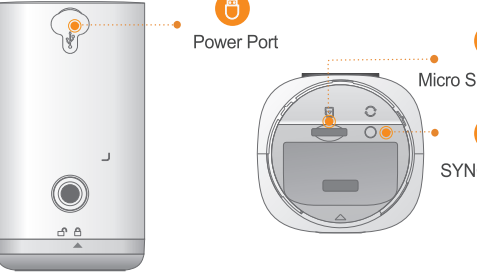
| | | |
|---|---|---|
|  |  |  |
| Camera ×1 | QSG ×1 | Power Adapter ×1 |
|  |  |  |
| Power Cable ×1 | Screw Package ×1 | Positioning Map ×1 |
|  |  |  |
| Mounting Plate ×1 | Bracket ×1 | Battery ×1 |

Camera Introduction



- Spotlight
- LED Indicator
- Built-in Mic
- Lens
- Photosensor
- Built-in Speaker

Installing Battery



Note: Press the SYNC button to pair with the base station.
Press and hold the SYNC button until you hear beep sound.

The description of the LED indicator is included in the following table.

| LED Indicator Status | Device Status |
|----------------------------|---|
| Off | <ul style="list-style-type: none">Sleeping modeRun out of battery |
| Green light on | <ul style="list-style-type: none">Alarm is triggeredInstructed to wake |
| Green light flashing | Reconnecting Wi-Fi |
| Green light quick flashing | Waiting for pairing with the base station |
| Green light on | Pairing succeeded |
| Red light on | Pairing timeout |
| Red light on | Reset completed |

Charging

Except the power port on the camera, you can also charge the battery through the power port on the battery.



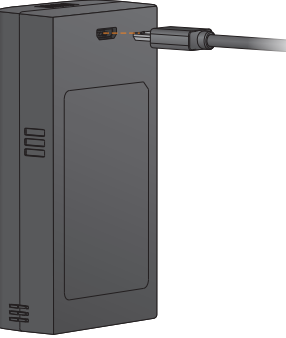
Pairing with Base Station

Step 1
On the base station: Press the SYNC button, and then the indicator on the base station flashes with white light.

Step 2
On the camera: Press the SYNC button, and then the indicator on the camera flashes with green light.

Step 3
The pairing starts, and the indicator on the camera stays on with green light, which means the pairing succeeded.

Note
You can pair six cameras at most with one base station, and pair one camera at a time.
Keep the distance of the base station and the camera within 30 cm (12 inches) during pairing.

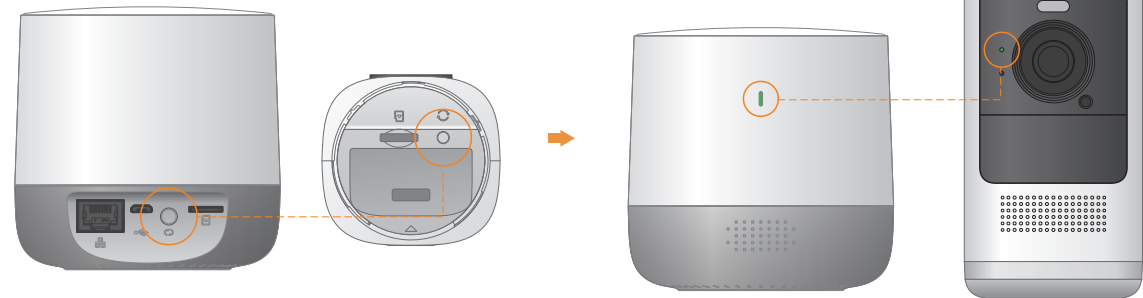


Safety Instructions

- Do not short circuit the battery with other metal.
- Do not heat the battery or throw it into fire.
- Do not take apart the battery or press it to make it deformed.
- Keep the battery away from children.
- It is recommended to use the original battery.
- Do not use the battery at temperature above 60°C/140°F.
- The battery cannot be charged at temperature below 0°C/32°F.
- Recycle the waste battery as local regulations instructed.

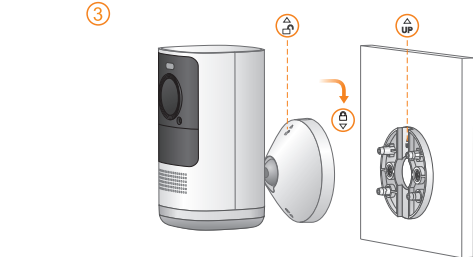
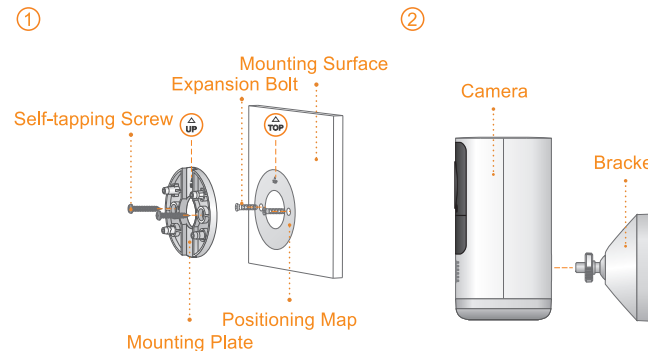
About the Guide

- This quick start guide is for reference only. Minor difference might be found in user interface.
- All the design and software here are subject to change without prior written notice.
- All trademarks and registered trademarks mentioned are the properties of their respective owners.
- Please visit our website or contact your local service engineer for more information.
- If there is any uncertainty or controversy, please refer to our final explanation.



Installing Camera

Note: Make sure that the mounting surface is strong enough to hold at least three times of the device weight.



- Step 1** Drill screw holes on the mounting surface as the positioning map shows, and then put in the expansion bolts. Attach the mounting plate to the mounting surface with the self-tapping screws.
- Step 2** Fix the bracket to the camera.
- Step 3** Attach the camera to the mounting plate.
Pull down the camera until you hear "click" to lock the camera.
- Step 4** Power up the camera, and then adjust the lens to the ideal angle.

FAQ

► **Q: How to reset the camera to factory default?**

Press and hold the sync button until you hear beep sound.

► **Q: How to charge the battery?**

Charge the battery with 5V, 2A power adapter.

► **Q: The camera runs out of battery too fast?**

- Check whether the camera is waked up frequently by passers-by.
- Check whether the Wi-Fi connection of the base station and the camera is good.
- Do not put the camera near air conditioner or the air vent.

► **Q: The camera is offline?**

- Check whether the battery runs out of power.
- Wake up the camera by pressing any button on the camera or PIR function to make sure whether the device is online.
- Check whether the base station is offline.

► **Q: Fail to pair the camera and the base station?**

- The distance between the camera and the base station is too far.
- Check whether there are two cameras pairing the base station at the same time.
- For the paired camera, reset the camera before pairing.
- Make sure that the base station has been added before pairing.

For more questions, please visit www.imoulife.com/web/support/help, or scan the QR code below.

