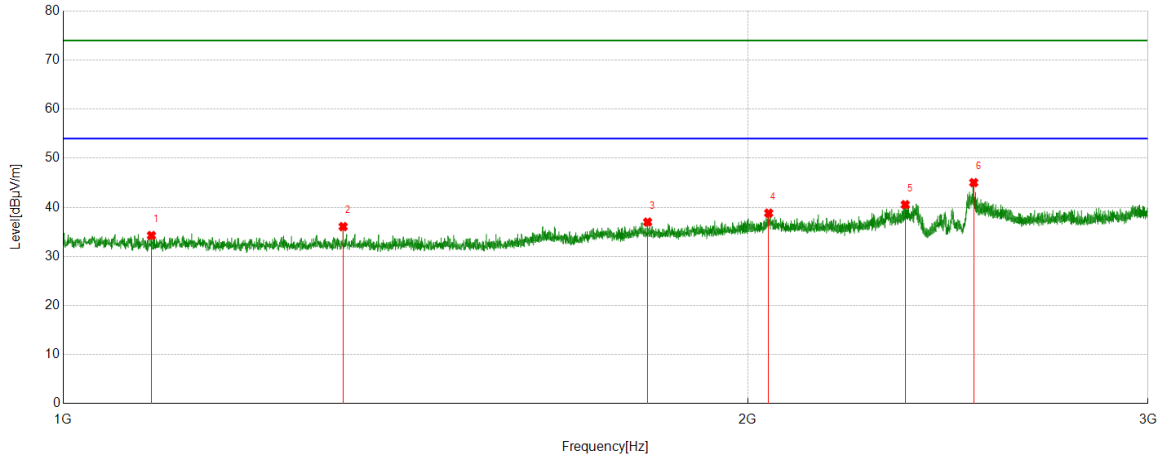




Test Mode	Channel	Polarization	Verdict
11B	HCH	Horizontal	PASS

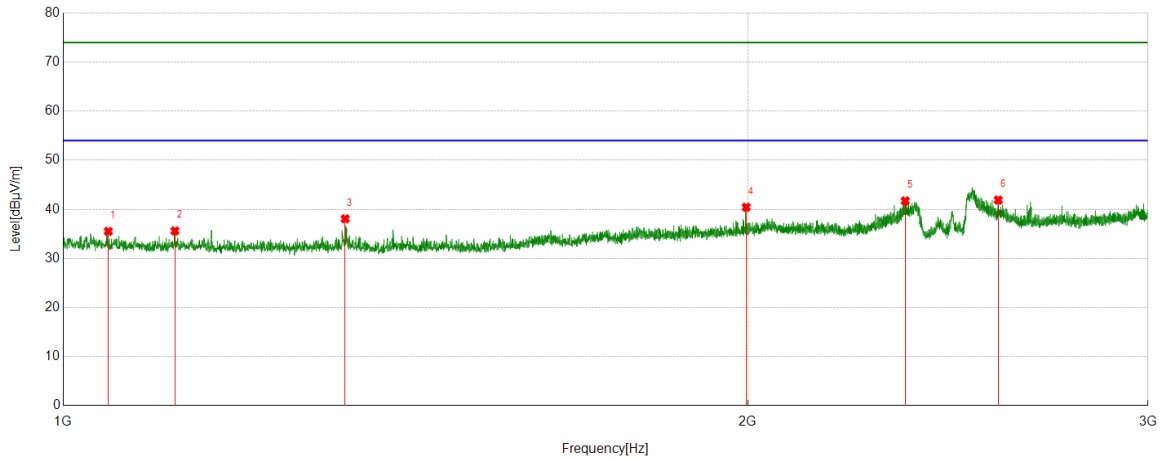


No.	Frequency	Reading Level	Correct Factor	Result	Limit	Margin	Remark
	[MHz]	[dBuV/m]	[dB]	[dBuV/m]	[dBuV/m]	[dB]	
1	1093.5117	40.41	-6.15	34.26	74.00	-39.74	Horizontal
2	1327.791	42.47	-6.40	36.07	74.00	-37.93	Horizontal
3	1807.3509	41.33	-4.34	36.99	74.00	-37.01	Horizontal
4	2043.1304	41.31	-2.49	38.82	74.00	-35.18	Horizontal
5	2346.1683	43.63	-3.09	40.54	74.00	-33.46	Horizontal
6	2514.6893	46.91	-1.87	45.04	74.00	-28.96	Horizontal

- Note: 1. Measurement = Reading Level + Correct Factor.
 2. If Peak Result complies with AV limit, AV Result is deemed to comply with AV limit.
 3. Test setup: RBW: 1 MHz, VBW: 3 MHz, Sweep time: auto.
 4. Peak: Peak detector.
 5. For below 3GHz part, filter losses were only considered in the spurious frequency bands and the authorized band was not corrected for Band Reject Filter losses.
 6. Only the worst case emission was recorded, if it complies with the limit, the other emissions deemed to comply with the limit.



Test Mode	Channel	Polarization	Verdict
11B	HCH	Vertical	PASS

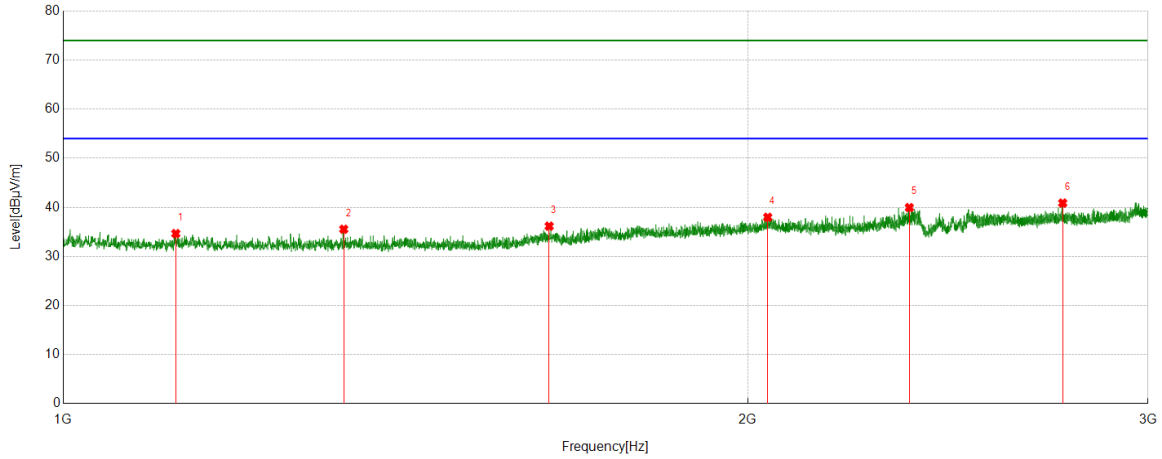


No.	Frequency	Reading Level	Correct Factor	Result	Limit	Margin	Remark
	[MHz]	[dBuV/m]	[dB]	[dBuV/m]	[dBuV/m]	[dB]	
1	1046.7558	41.16	-5.65	35.51	74.00	-38.49	Vertical
2	1119.765	41.66	-6.06	35.60	74.00	-38.40	Vertical
3	1330.5413	44.49	-6.42	38.07	74.00	-35.93	Vertical
4	1997.1246	43.51	-3.09	40.42	74.00	-33.58	Vertical
5	2346.1683	44.82	-3.09	41.73	74.00	-32.27	Vertical
6	2577.9472	44.12	-2.23	41.89	74.00	-32.11	Vertical

- Note: 1. Measurement = Reading Level + Correct Factor.
 2. If Peak Result complies with AV limit, AV Result is deemed to comply with AV limit.
 3. Test setup: RBW: 1 MHz, VBW: 3 MHz, Sweep time: auto.
 4. Peak: Peak detector.
 5. For below 3GHz part, filter losses were only considered in the spurious frequency bands and the authorized band was not corrected for Band Reject Filter losses.
 6. Only the worst case emission was recorded, if it complies with the limit, the other emissions deemed to comply with the limit.



Test Mode	Channel	Polarization	Verdict
11G	LCH	Horizontal	PASS

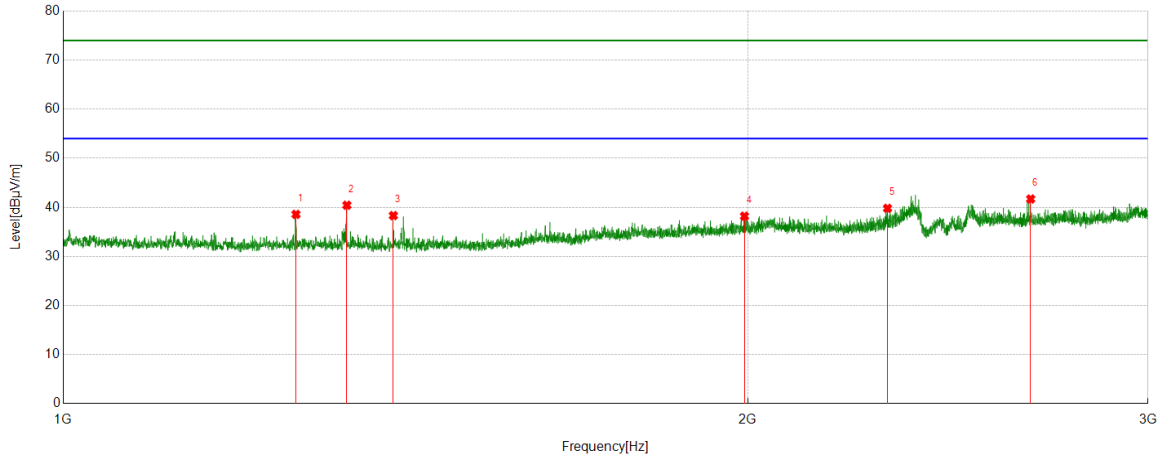


No.	Frequency	Reading Level	Correct Factor	Result	Limit	Margin	Remark
	[MHz]	[dBuV/m]	[dB]	[dBuV/m]	[dBuV/m]	[dB]	
1	1120.7651	40.70	-6.05	34.65	74.00	-39.35	Horizontal
2	1328.5411	41.95	-6.41	35.54	74.00	-38.46	Horizontal
3	1635.8295	41.52	-5.36	36.16	74.00	-37.84	Horizontal
4	2041.1301	40.46	-2.48	37.98	74.00	-36.02	Horizontal
5	2355.9195	42.83	-2.88	39.95	74.00	-34.05	Horizontal
6	2751.719	42.11	-1.24	40.87	74.00	-33.13	Horizontal

- Note: 1. Measurement = Reading Level + Correct Factor.
 2. If Peak Result complies with AV limit, AV Result is deemed to comply with AV limit.
 3. Test setup: RBW: 1 MHz, VBW: 3 MHz, Sweep time: auto.
 4. Peak: Peak detector.
 5. For below 3GHz part, filter losses were only considered in the spurious frequency bands and the authorized band was not corrected for Band Reject Filter losses.
 6. Only the worst case emission was recorded, if it complies with the limit, the other emissions deemed to comply with the limit.



Test Mode	Channel	Polarization	Verdict
11G	LCH	Vertical	PASS

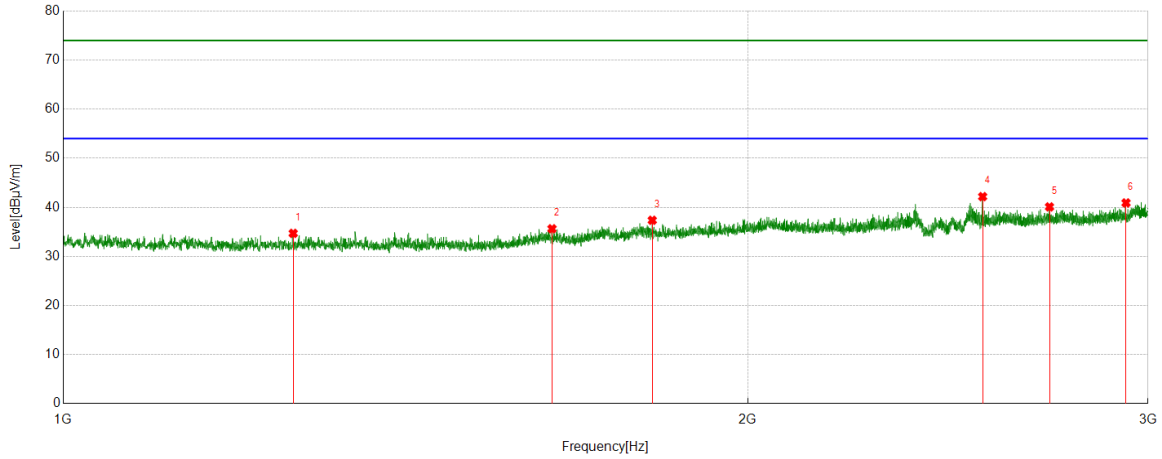


No.	Frequency	Reading Level	Correct Factor	Result	Limit	Margin	Remark
	[MHz]	[dBuV/m]	[dB]	[dBuV/m]	[dBuV/m]	[dB]	
1	1265.7832	44.79	-6.22	38.57	74.00	-35.43	Vertical
2	1332.7916	46.85	-6.42	40.43	74.00	-33.57	Vertical
3	1397.0496	44.81	-6.49	38.32	74.00	-35.68	Vertical
4	1993.6242	41.34	-3.14	38.20	74.00	-35.80	Vertical
5	2304.4131	42.85	-3.05	39.80	74.00	-34.20	Vertical
6	2663.958	43.54	-1.84	41.70	74.00	-32.30	Vertical

- Note: 1. Measurement = Reading Level + Correct Factor.
 2. If Peak Result complies with AV limit, AV Result is deemed to comply with AV limit.
 3. Test setup: RBW: 1 MHz, VBW: 3 MHz, Sweep time: auto.
 4. Peak: Peak detector.
 5. For below 3GHz part, filter losses were only considered in the spurious frequency bands and the authorized band was not corrected for Band Reject Filter losses.
 6. Only the worst case emission was recorded, if it complies with the limit, the other emissions deemed to comply with the limit.



Test Mode	Channel	Polarization	Verdict
11G	MCH	Horizontal	PASS

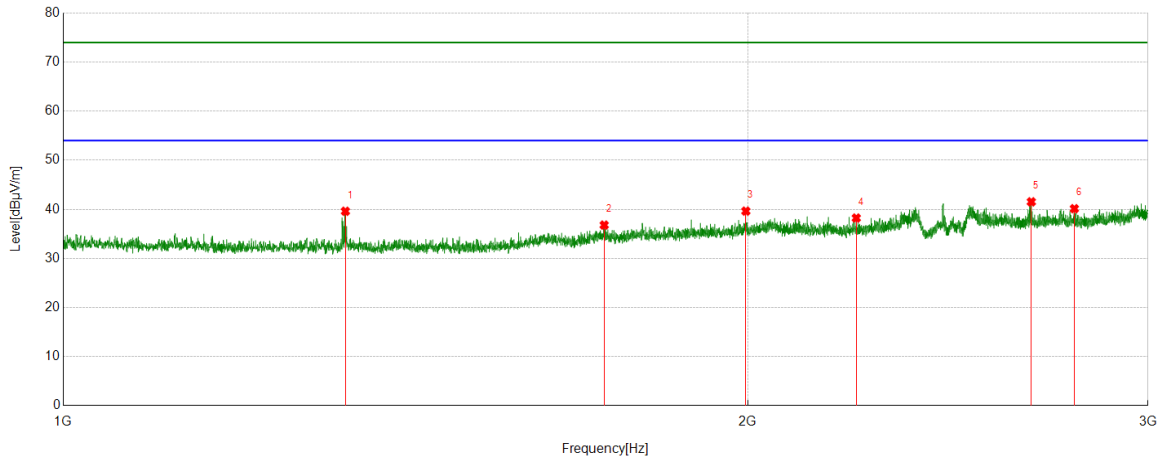


No.	Frequency	Reading Level	Correct Factor	Result	Limit	Margin	Remark
	[MHz]	[dBuV/m]	[dB]	[dBuV/m]	[dBuV/m]	[dB]	
1	1262.2828	41.00	-6.30	34.70	74.00	-39.30	Horizontal
2	1640.5801	40.96	-5.33	35.63	74.00	-38.37	Horizontal
3	1815.852	41.60	-4.24	37.36	74.00	-36.64	Horizontal
4	2537.4422	44.46	-2.28	42.18	74.00	-31.82	Horizontal
5	2715.2144	41.32	-1.23	40.09	74.00	-33.91	Horizontal
6	2933.9917	41.44	-0.54	40.90	74.00	-33.10	Horizontal

- Note: 1. Measurement = Reading Level + Correct Factor.
 2. If Peak Result complies with AV limit, AV Result is deemed to comply with AV limit.
 3. Test setup: RBW: 1 MHz, VBW: 3 MHz, Sweep time: auto.
 4. Peak: Peak detector.
 5. For below 3GHz part, filter losses were only considered in the spurious frequency bands and the authorized band was not corrected for Band Reject Filter losses.
 6. Only the worst case emission was recorded, if it complies with the limit, the other emissions deemed to comply with the limit.



Test Mode	Channel	Polarization	Verdict
11G	MCH	Vertical	PASS

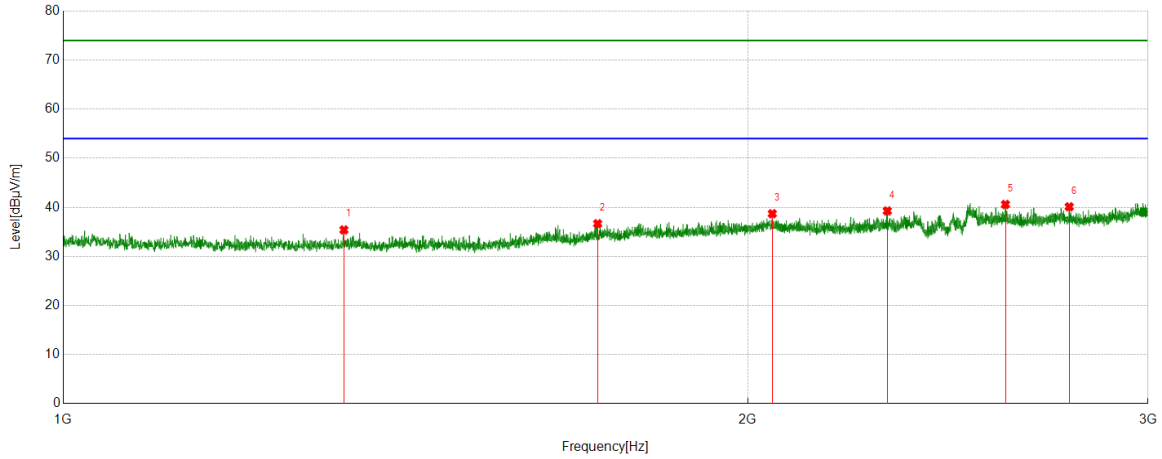


No.	Frequency	Reading Level	Correct Factor	Result	Limit	Margin	Remark
	[MHz]	[dBuV/m]	[dB]	[dBuV/m]	[dBuV/m]	[dB]	
1	1330.7913	46.03	-6.42	39.61	74.00	-34.39	Vertical
2	1729.5912	41.46	-4.67	36.79	74.00	-37.21	Vertical
3	1996.3745	42.73	-3.10	39.63	74.00	-34.37	Vertical
4	2232.6541	41.44	-3.21	38.23	74.00	-35.77	Vertical
5	2665.7082	43.37	-1.84	41.53	74.00	-32.47	Vertical
6	2784.4731	41.56	-1.43	40.13	74.00	-33.87	Vertical

- Note: 1. Measurement = Reading Level + Correct Factor.
 2. If Peak Result complies with AV limit, AV Result is deemed to comply with AV limit.
 3. Test setup: RBW: 1 MHz, VBW: 3 MHz, Sweep time: auto.
 4. Peak: Peak detector.
 5. For below 3GHz part, filter losses were only considered in the spurious frequency bands and the authorized band was not corrected for Band Reject Filter losses.
 6. Only the worst case emission was recorded, if it complies with the limit, the other emissions deemed to comply with the limit.



Test Mode	Channel	Polarization	Verdict
11G	HCH	Horizontal	PASS

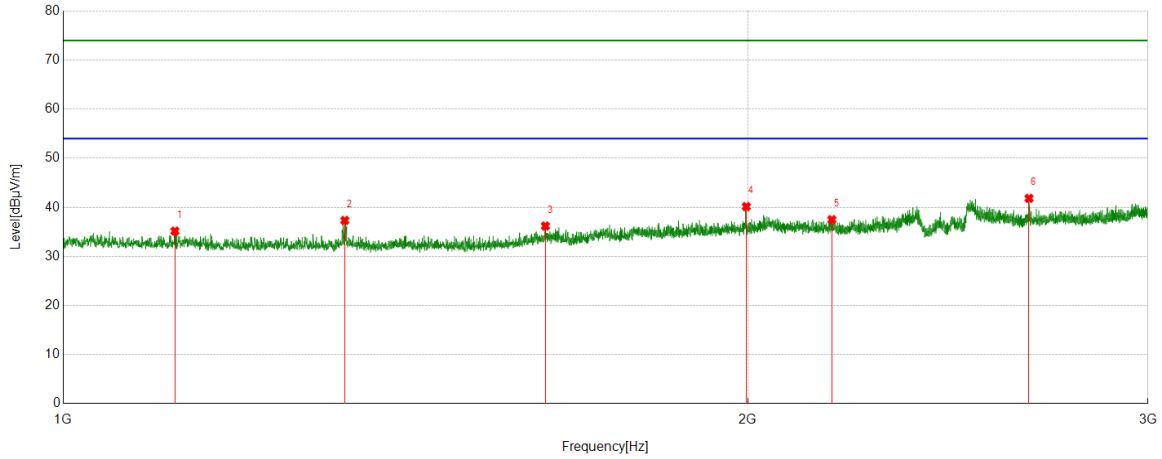


No.	Frequency	Reading Level	Correct Factor	Result	Limit	Margin	Remark
	[MHz]	[dBuV/m]	[dB]	[dBuV/m]	[dBuV/m]	[dB]	
1	1328.7911	41.81	-6.41	35.40	74.00	-38.60	Horizontal
2	1718.0898	41.63	-4.96	36.67	74.00	-37.33	Horizontal
3	2050.6313	41.24	-2.54	38.70	74.00	-35.30	Horizontal
4	2303.913	42.33	-3.06	39.27	74.00	-34.73	Horizontal
5	2596.6996	42.43	-1.84	40.59	74.00	-33.41	Horizontal
6	2769.9712	41.39	-1.28	40.11	74.00	-33.89	Horizontal

- Note: 1. Measurement = Reading Level + Correct Factor.
 2. If Peak Result complies with AV limit, AV Result is deemed to comply with AV limit.
 3. Test setup: RBW: 1 MHz, VBW: 3 MHz, Sweep time: auto.
 4. Peak: Peak detector.
 5. For below 3GHz part, filter losses were only considered in the spurious frequency bands and the authorized band was not corrected for Band Reject Filter losses.
 6. Only the worst case emission was recorded, if it complies with the limit, the other emissions deemed to comply with the limit.



Test Mode	Channel	Polarization	Verdict
11G	HCH	Vertical	PASS

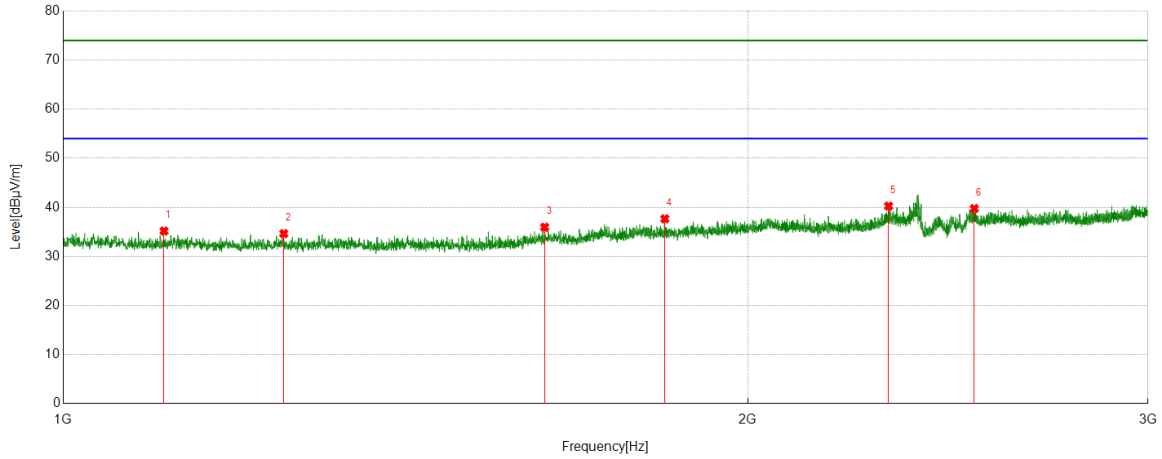


No.	Frequency	Reading Level	Correct Factor	Result	Limit	Margin	Remark
	[MHz]	[dBuV/m]	[dB]	[dBuV/m]	[dBuV/m]	[dB]	
1	1119.765	41.22	-6.06	35.16	74.00	-38.84	Vertical
2	1330.0413	43.75	-6.42	37.33	74.00	-36.67	Vertical
3	1629.5787	41.57	-5.38	36.19	74.00	-37.81	Vertical
4	1997.3747	43.23	-3.08	40.15	74.00	-33.85	Vertical
5	2178.1473	40.67	-3.19	37.48	74.00	-36.52	Vertical
6	2659.4574	43.66	-1.83	41.83	74.00	-32.17	Vertical

- Note: 1. Measurement = Reading Level + Correct Factor.
 2. If Peak Result complies with AV limit, AV Result is deemed to comply with AV limit.
 3. Test setup: RBW: 1 MHz, VBW: 3 MHz, Sweep time: auto.
 4. Peak: Peak detector.
 5. For below 3GHz part, filter losses were only considered in the spurious frequency bands and the authorized band was not corrected for Band Reject Filter losses.
 6. Only the worst case emission was recorded, if it complies with the limit, the other emissions deemed to comply with the limit.



Test Mode	Channel	Polarization	Verdict
11N HT20	LCH	Horizontal	PASS

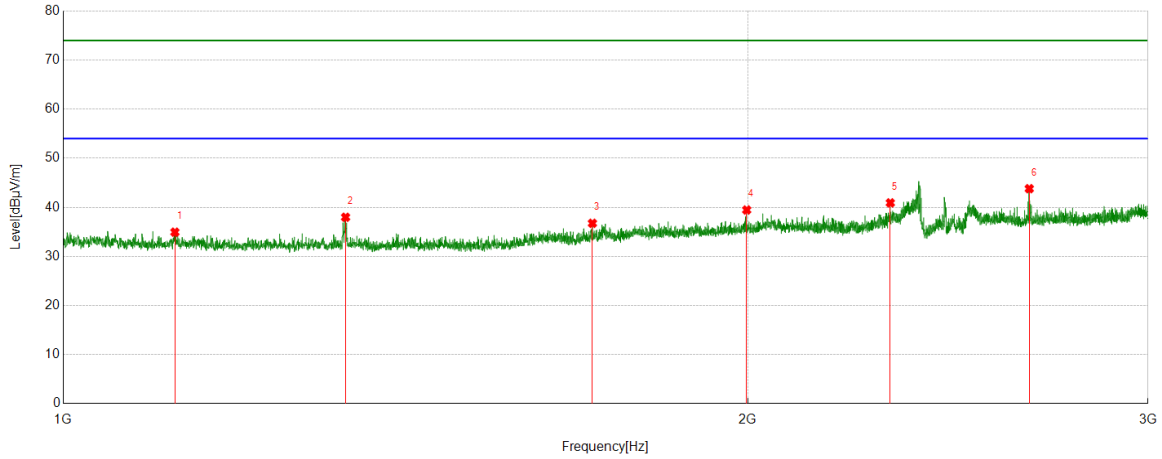


No.	Frequency	Reading Level	Correct Factor	Result	Limit	Margin	Remark
	[MHz]	[dBuV/m]	[dB]	[dBuV/m]	[dBuV/m]	[dB]	
1	1107.5134	41.31	-6.14	35.17	74.00	-38.83	Horizontal
2	1250.2813	40.79	-6.15	34.64	74.00	-39.36	Horizontal
3	1628.3285	41.35	-5.40	35.95	74.00	-38.05	Horizontal
4	1839.1049	41.87	-4.21	37.66	74.00	-36.34	Horizontal
5	2306.9134	43.28	-3.03	40.25	74.00	-33.75	Horizontal
6	2516.1895	41.58	-1.83	39.75	74.00	-34.25	Horizontal

- Note: 1. Measurement = Reading Level + Correct Factor.
 2. If Peak Result complies with AV limit, AV Result is deemed to comply with AV limit.
 3. Test setup: RBW: 1 MHz, VBW: 3 MHz, Sweep time: auto.
 4. Peak: Peak detector.
 5. For below 3GHz part, filter losses were only considered in the spurious frequency bands and the authorized band was not corrected for Band Reject Filter losses.
 6. Only the worst case emission was recorded, if it complies with the limit, the other emissions deemed to comply with the limit.



Test Mode	Channel	Polarization	Verdict
11N HT20	LCH	Vertical	PASS

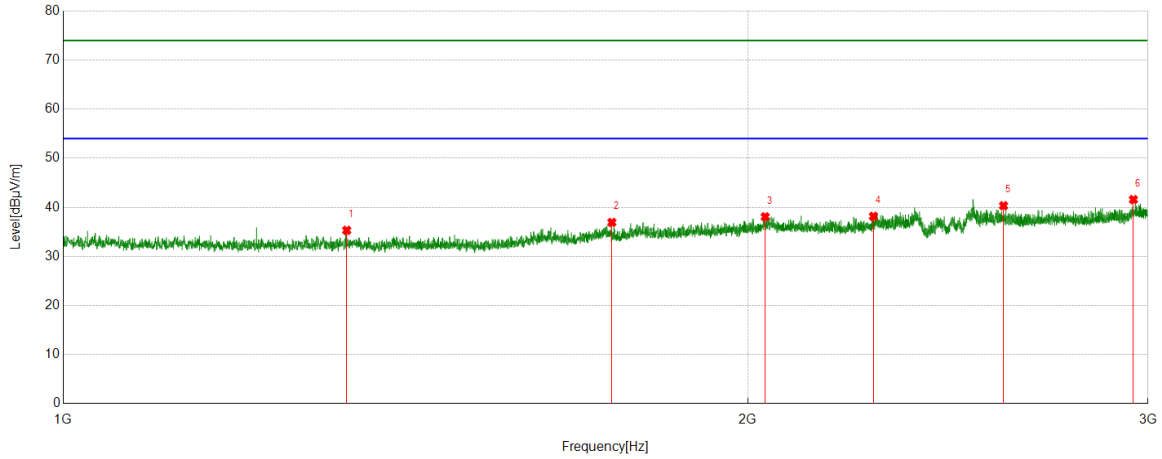


No.	Frequency	Reading Level	Correct Factor	Result	Limit	Margin	Remark
	[MHz]	[dBuV/m]	[dB]	[dBuV/m]	[dBuV/m]	[dB]	
1	1119.765	41.00	-6.06	34.94	74.00	-39.06	Vertical
2	1331.0414	44.40	-6.42	37.98	74.00	-36.02	Vertical
3	1709.0886	41.53	-4.78	36.75	74.00	-37.25	Vertical
4	1998.1248	42.53	-3.07	39.46	74.00	-34.54	Vertical
5	2310.9139	43.91	-3.00	40.91	74.00	-33.09	Vertical
6	2660.2075	45.62	-1.82	43.80	74.00	-30.20	Vertical

- Note: 1. Measurement = Reading Level + Correct Factor.
 2. If Peak Result complies with AV limit, AV Result is deemed to comply with AV limit.
 3. Test setup: RBW: 1 MHz, VBW: 3 MHz, Sweep time: auto.
 4. Peak: Peak detector.
 5. For below 3GHz part, filter losses were only considered in the spurious frequency bands and the authorized band was not corrected for Band Reject Filter losses.
 6. Only the worst case emission was recorded, if it complies with the limit, the other emissions deemed to comply with the limit.



Test Mode	Channel	Polarization	Verdict
11N HT20	MCH	Horizontal	PASS

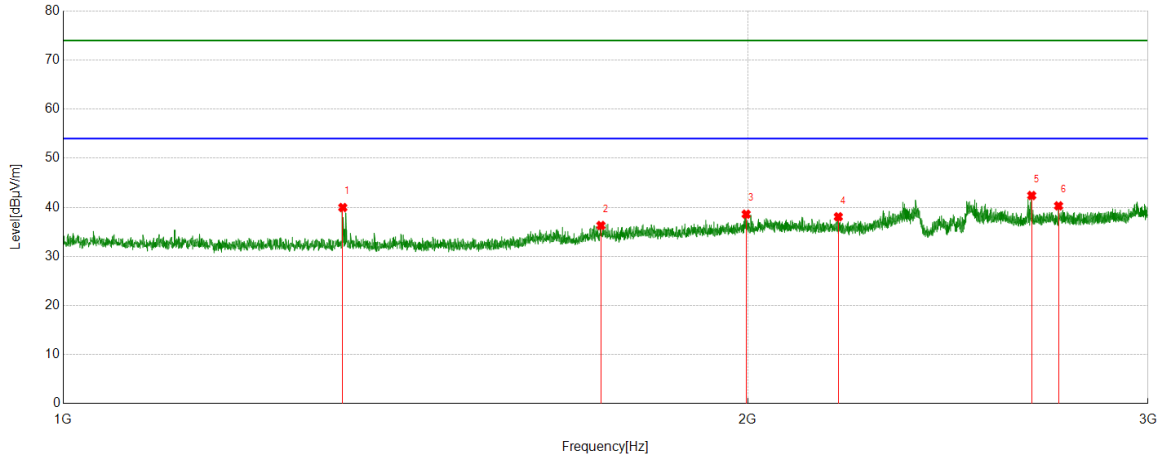


No.	Frequency	Reading Level	Correct Factor	Result	Limit	Margin	Remark
	[MHz]	[dBuV/m]	[dB]	[dBuV/m]	[dBuV/m]	[dB]	
1	1332.5416	41.73	-6.42	35.31	74.00	-38.69	Horizontal
2	1743.0929	41.81	-4.88	36.93	74.00	-37.07	Horizontal
3	2035.8795	40.69	-2.62	38.07	74.00	-35.93	Horizontal
4	2271.659	41.41	-3.24	38.17	74.00	-35.83	Horizontal
5	2591.699	42.29	-1.97	40.32	74.00	-33.68	Horizontal
6	2955.9945	41.48	0.10	41.58	74.00	-32.42	Horizontal

- Note: 1. Measurement = Reading Level + Correct Factor.
 2. If Peak Result complies with AV limit, AV Result is deemed to comply with AV limit.
 3. Test setup: RBW: 1 MHz, VBW: 3 MHz, Sweep time: auto.
 4. Peak: Peak detector.
 5. For below 3GHz part, filter losses were only considered in the spurious frequency bands and the authorized band was not corrected for Band Reject Filter losses.
 6. Only the worst case emission was recorded, if it complies with the limit, the other emissions deemed to comply with the limit.



Test Mode	Channel	Polarization	Verdict
11N HT20	MCH	Vertical	PASS

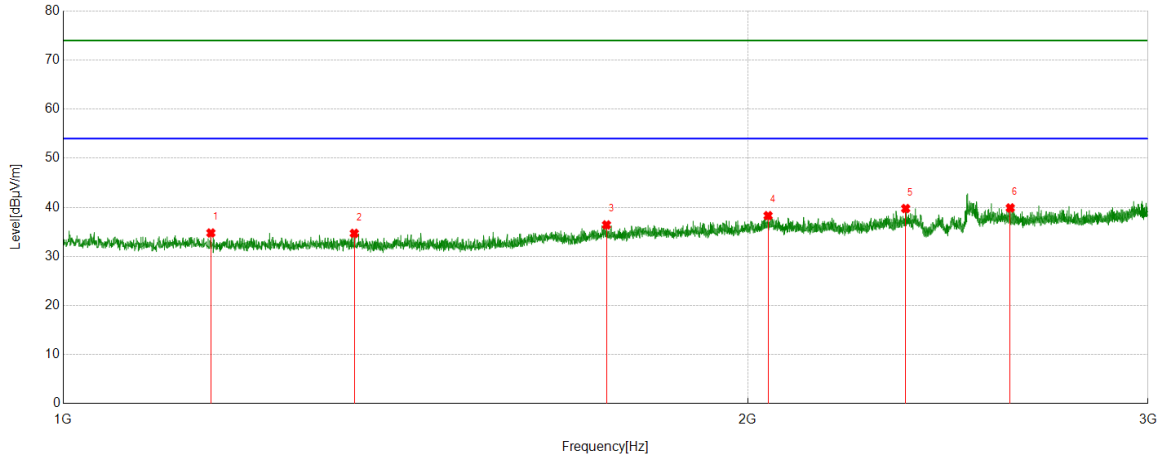


No.	Frequency	Reading Level	Correct Factor	Result	Limit	Margin	Remark
	[MHz]	[dBuV/m]	[dB]	[dBuV/m]	[dBuV/m]	[dB]	
1	1327.2909	46.36	-6.40	39.96	74.00	-34.04	Vertical
2	1723.8405	41.17	-4.87	36.30	74.00	-37.70	Vertical
3	1997.1246	41.69	-3.09	38.60	74.00	-35.40	Vertical
4	2192.399	41.37	-3.30	38.07	74.00	-35.93	Vertical
5	2666.7083	44.25	-1.84	42.41	74.00	-31.59	Vertical
6	2740.2175	41.74	-1.44	40.30	74.00	-33.70	Vertical

- Note: 1. Measurement = Reading Level + Correct Factor.
 2. If Peak Result complies with AV limit, AV Result is deemed to comply with AV limit.
 3. Test setup: RBW: 1 MHz, VBW: 3 MHz, Sweep time: auto.
 4. Peak: Peak detector.
 5. For below 3GHz part, filter losses were only considered in the spurious frequency bands and the authorized band was not corrected for Band Reject Filter losses.
 6. Only the worst case emission was recorded, if it complies with the limit, the other emissions deemed to comply with the limit.



Test Mode	Channel	Polarization	Verdict
11N HT20	HCH	Horizontal	PASS

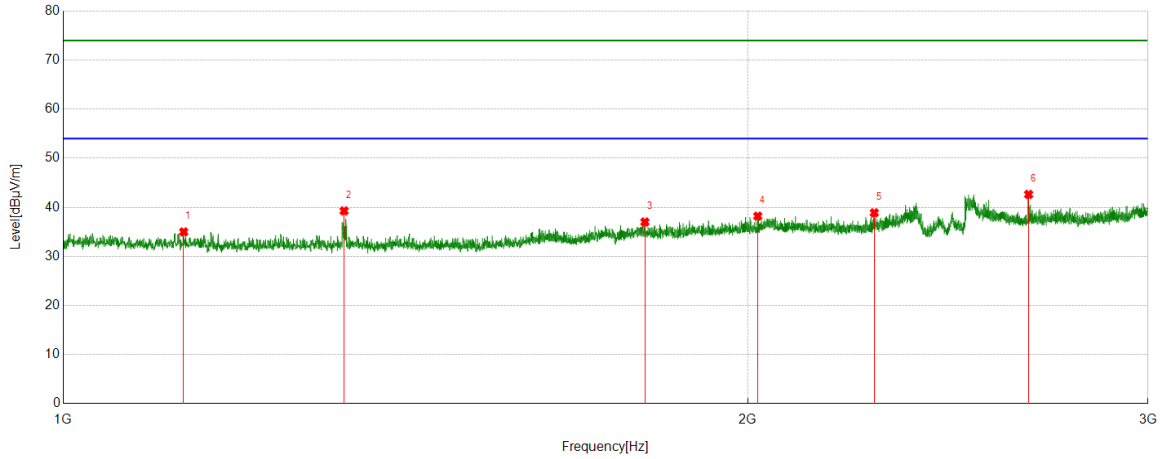


No.	Frequency	Reading Level	Correct Factor	Result	Limit	Margin	Remark
	[MHz]	[dBuV/m]	[dB]	[dBuV/m]	[dBuV/m]	[dB]	
1	1161.2702	40.94	-6.16	34.78	74.00	-39.22	Horizontal
2	1342.7928	41.12	-6.42	34.70	74.00	-39.30	Horizontal
3	1733.5917	41.14	-4.72	36.42	74.00	-37.58	Horizontal
4	2041.8802	40.78	-2.48	38.30	74.00	-35.70	Horizontal
5	2347.1684	42.84	-3.09	39.75	74.00	-34.25	Horizontal
6	2609.4512	41.41	-1.53	39.88	74.00	-34.12	Horizontal

- Note: 1. Measurement = Reading Level + Correct Factor.
 2. If Peak Result complies with AV limit, AV Result is deemed to comply with AV limit.
 3. Test setup: RBW: 1 MHz, VBW: 3 MHz, Sweep time: auto.
 4. Peak: Peak detector.
 5. For below 3GHz part, filter losses were only considered in the spurious frequency bands and the authorized band was not corrected for Band Reject Filter losses.
 6. Only the worst case emission was recorded, if it complies with the limit, the other emissions deemed to comply with the limit.



Test Mode	Channel	Polarization	Verdict
11N HT20	HCH	Vertical	PASS

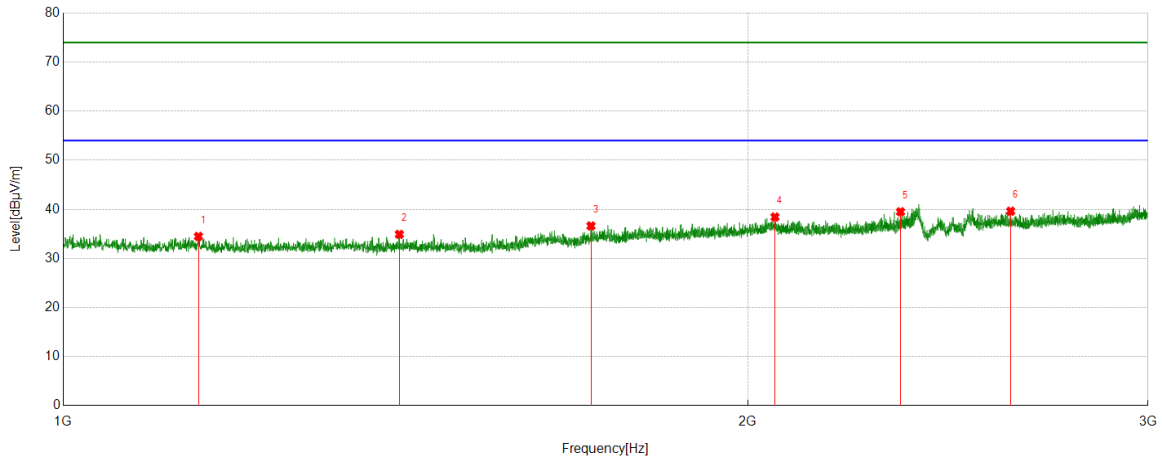


No.	Frequency	Reading Level	Correct Factor	Result	Limit	Margin	Remark
	[MHz]	[dBuV/m]	[dB]	[dBuV/m]	[dBuV/m]	[dB]	
1	1129.7662	41.04	-6.05	34.99	74.00	-39.01	Vertical
2	1329.0411	45.68	-6.41	39.27	74.00	-34.73	Vertical
3	1802.3503	41.26	-4.25	37.01	74.00	-36.99	Vertical
4	2020.6276	41.11	-2.91	38.20	74.00	-35.80	Vertical
5	2273.6592	42.11	-3.23	38.88	74.00	-35.12	Vertical
6	2658.4573	44.48	-1.84	42.64	74.00	-31.36	Vertical

- Note: 1. Measurement = Reading Level + Correct Factor.
 2. If Peak Result complies with AV limit, AV Result is deemed to comply with AV limit.
 3. Test setup: RBW: 1 MHz, VBW: 3 MHz, Sweep time: auto.
 4. Peak: Peak detector.
 5. For below 3GHz part, filter losses were only considered in the spurious frequency bands and the authorized band was not corrected for Band Reject Filter losses.
 6. Only the worst case emission was recorded, if it complies with the limit, the other emissions deemed to comply with the limit.



Test Mode	Channel	Polarization	Verdict
11N HT40	LCH	Horizontal	PASS

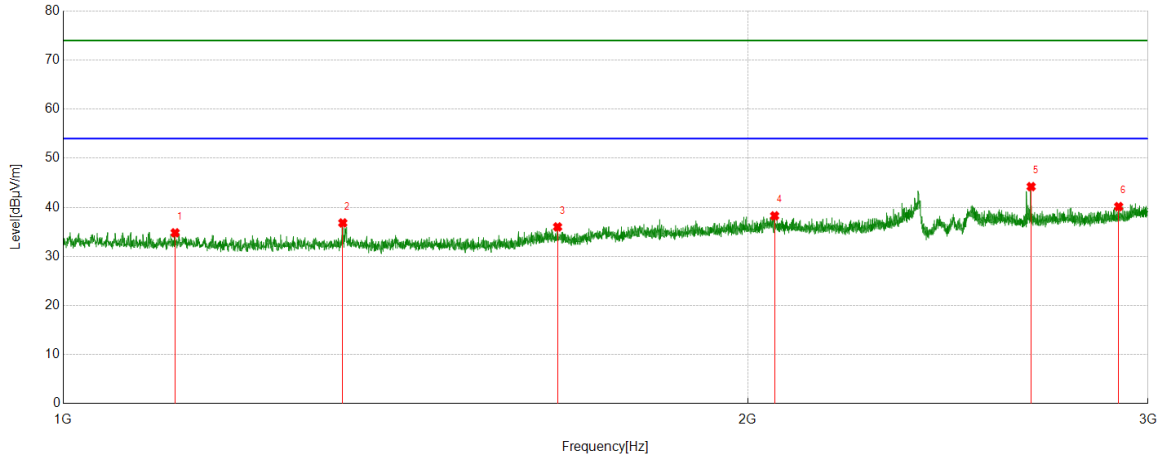


No.	Frequency	Reading Level	Correct Factor	Result	Limit	Margin	Remark
	[MHz]	[dBuV/m]	[dB]	[dBuV/m]	[dBuV/m]	[dB]	
1	1146.7683	40.54	-6.06	34.48	74.00	-39.52	Horizontal
2	1405.5507	41.44	-6.54	34.90	74.00	-39.10	Horizontal
3	1706.5883	41.48	-4.86	36.62	74.00	-37.38	Horizontal
4	2056.132	41.15	-2.71	38.44	74.00	-35.56	Horizontal
5	2334.9169	42.63	-3.13	39.50	74.00	-34.50	Horizontal
6	2610.4513	41.13	-1.51	39.62	74.00	-34.38	Horizontal

- Note: 1. Measurement = Reading Level + Correct Factor.
 2. If Peak Result complies with AV limit, AV Result is deemed to comply with AV limit.
 3. Test setup: RBW: 1 MHz, VBW: 3 MHz, Sweep time: auto.
 4. Peak: Peak detector.
 5. For below 3GHz part, filter losses were only considered in the spurious frequency bands and the authorized band was not corrected for Band Reject Filter losses.
 6. Only the worst case emission was recorded, if it complies with the limit, the other emissions deemed to comply with the limit.



Test Mode	Channel	Polarization	Verdict
11N HT40	LCH	Vertical	PASS

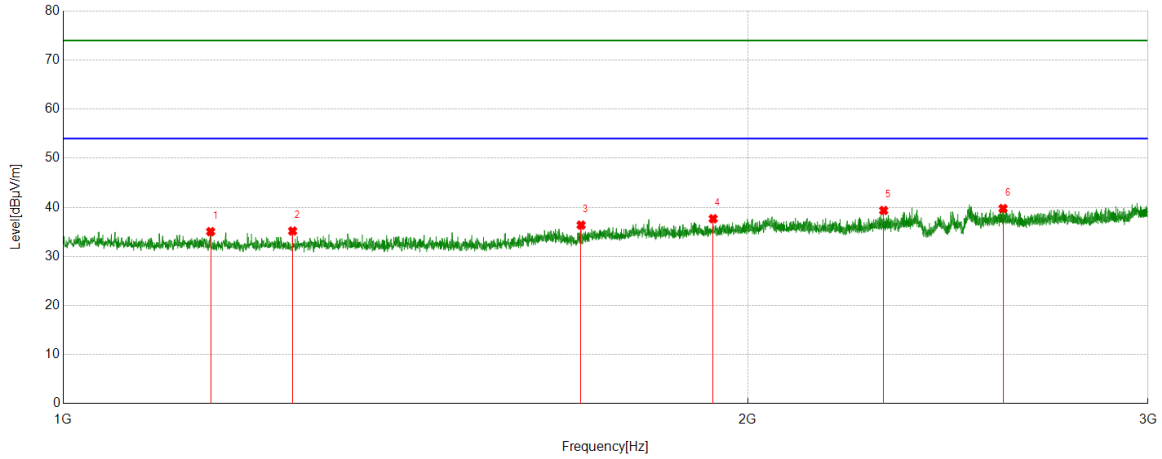


No.	Frequency	Reading Level	Correct Factor	Result	Limit	Margin	Remark
	[MHz]	[dBuV/m]	[dB]	[dBuV/m]	[dBuV/m]	[dB]	
1	1120.015	40.86	-6.05	34.81	74.00	-39.19	Vertical
2	1327.2909	43.22	-6.40	36.82	74.00	-37.18	Vertical
3	1649.8312	41.10	-5.09	36.01	74.00	-37.99	Vertical
4	2055.3819	40.96	-2.69	38.27	74.00	-35.73	Vertical
5	2665.2082	46.06	-1.84	44.22	74.00	-29.78	Vertical
6	2912.239	40.84	-0.69	40.15	74.00	-33.85	Vertical

- Note: 1. Measurement = Reading Level + Correct Factor.
 2. If Peak Result complies with AV limit, AV Result is deemed to comply with AV limit.
 3. Test setup: RBW: 1 MHz, VBW: 3 MHz, Sweep time: auto.
 4. Peak: Peak detector.
 5. For below 3GHz part, filter losses were only considered in the spurious frequency bands and the authorized band was not corrected for Band Reject Filter losses.
 6. Only the worst case emission was recorded, if it complies with the limit, the other emissions deemed to comply with the limit.



Test Mode	Channel	Polarization	Verdict
11N HT40	MCH	Horizontal	PASS

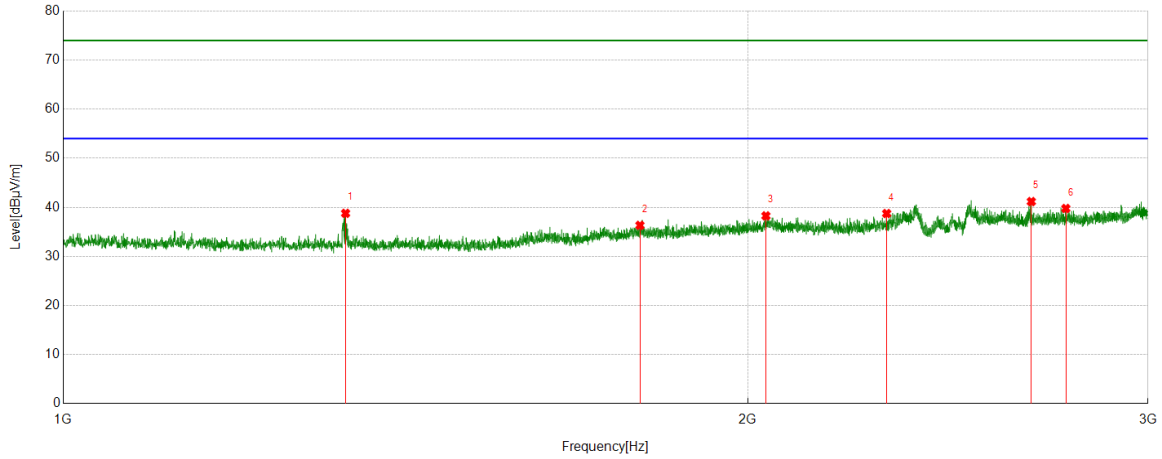


No.	Frequency	Reading Level	Correct Factor	Result	Limit	Margin	Remark
	[MHz]	[dBuV/m]	[dB]	[dBuV/m]	[dBuV/m]	[dB]	
1	1161.0201	41.21	-6.16	35.05	74.00	-38.95	Horizontal
2	1261.5327	41.49	-6.32	35.17	74.00	-38.83	Horizontal
3	1689.5862	41.32	-4.94	36.38	74.00	-37.62	Horizontal
4	1931.3664	41.01	-3.33	37.68	74.00	-36.32	Horizontal
5	2295.4119	42.48	-3.12	39.36	74.00	-34.64	Horizontal
6	2590.4488	41.75	-2.00	39.75	74.00	-34.25	Horizontal

- Note: 1. Measurement = Reading Level + Correct Factor.
 2. If Peak Result complies with AV limit, AV Result is deemed to comply with AV limit.
 3. Test setup: RBW: 1 MHz, VBW: 3 MHz, Sweep time: auto.
 4. Peak: Peak detector.
 5. For below 3GHz part, filter losses were only considered in the spurious frequency bands and the authorized band was not corrected for Band Reject Filter losses.
 6. Only the worst case emission was recorded, if it complies with the limit, the other emissions deemed to comply with the limit.



Test Mode	Channel	Polarization	Verdict
11N HT40	MCH	Vertical	PASS

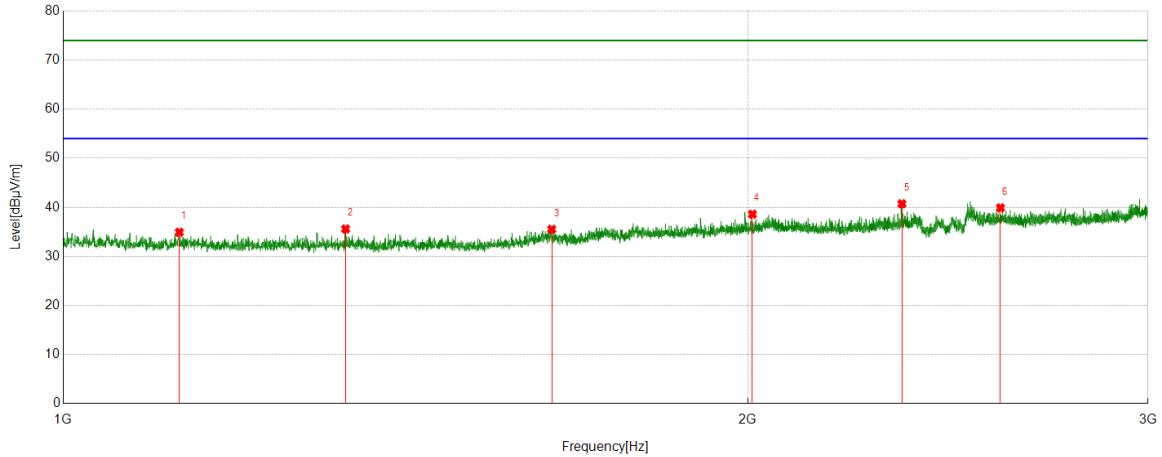


No.	Frequency	Reading Level	Correct Factor	Result	Limit	Margin	Remark
	[MHz]	[dBuV/m]	[dB]	[dBuV/m]	[dBuV/m]	[dB]	
1	1331.0414	45.20	-6.42	38.78	74.00	-35.22	Vertical
2	1793.3492	40.64	-4.31	36.33	74.00	-37.67	Vertical
3	2037.3797	40.83	-2.57	38.26	74.00	-35.74	Vertical
4	2302.4128	41.81	-3.07	38.74	74.00	-35.26	Vertical
5	2665.7082	43.01	-1.84	41.17	74.00	-32.83	Vertical
6	2760.4701	41.12	-1.35	39.77	74.00	-34.23	Vertical

- Note: 1. Measurement = Reading Level + Correct Factor.
 2. If Peak Result complies with AV limit, AV Result is deemed to comply with AV limit.
 3. Test setup: RBW: 1 MHz, VBW: 3 MHz, Sweep time: auto.
 4. Peak: Peak detector.
 5. For below 3GHz part, filter losses were only considered in the spurious frequency bands and the authorized band was not corrected for Band Reject Filter losses.
 6. Only the worst case emission was recorded, if it complies with the limit, the other emissions deemed to comply with the limit.



Test Mode	Channel	Polarization	Verdict
11N HT40	HCH	Horizontal	PASS

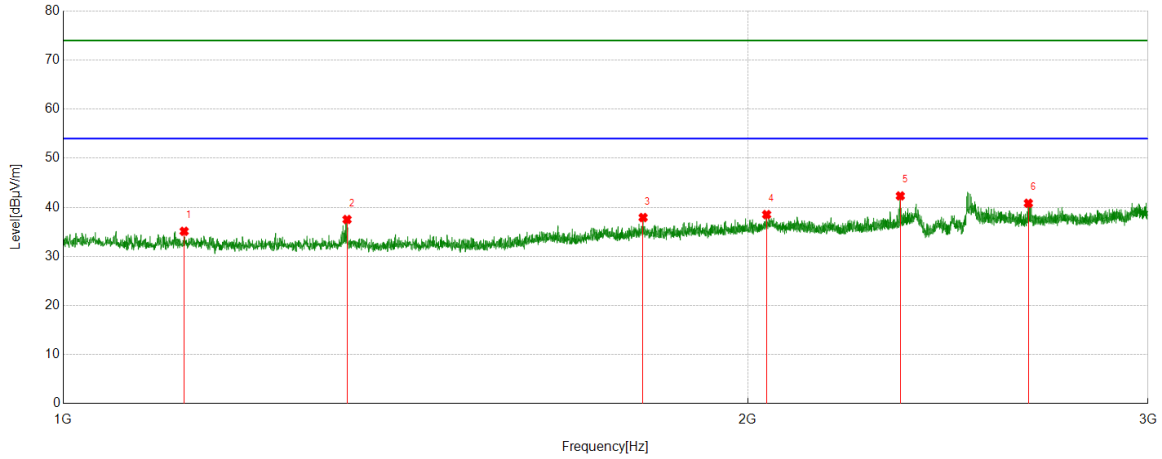


No.	Frequency	Reading Level	Correct Factor	Result	Limit	Margin	Remark
	[MHz]	[dBuV/m]	[dB]	[dBuV/m]	[dBuV/m]	[dB]	
1	1124.7656	40.97	-6.05	34.92	74.00	-39.08	Horizontal
2	1331.0414	42.02	-6.42	35.60	74.00	-38.40	Horizontal
3	1640.08	40.87	-5.34	35.53	74.00	-38.47	Horizontal
4	2009.6262	41.54	-2.94	38.60	74.00	-35.40	Horizontal
5	2338.1673	43.85	-3.12	40.73	74.00	-33.27	Horizontal
6	2583.698	42.06	-2.16	39.90	74.00	-34.10	Horizontal

- Note: 1. Measurement = Reading Level + Correct Factor.
 2. If Peak Result complies with AV limit, AV Result is deemed to comply with AV limit.
 3. Test setup: RBW: 1 MHz, VBW: 3 MHz, Sweep time: auto.
 4. Peak: Peak detector.
 5. For below 3GHz part, filter losses were only considered in the spurious frequency bands and the authorized band was not corrected for Band Reject Filter losses.
 6. Only the worst case emission was recorded, if it complies with the limit, the other emissions deemed to comply with the limit.



Test Mode	Channel	Polarization	Verdict
11N HT40	HCH	Vertical	PASS



No.	Frequency	Reading Level	Correct Factor	Result	Limit	Margin	Remark
	[MHz]	[dBuV/m]	[dB]	[dBuV/m]	[dBuV/m]	[dB]	
1	1130.2663	41.17	-6.05	35.12	74.00	-38.88	Vertical
2	1333.0416	43.94	-6.42	37.52	74.00	-36.48	Vertical
3	1799.0999	42.14	-4.22	37.92	74.00	-36.08	Vertical
4	2038.8799	41.03	-2.51	38.52	74.00	-35.48	Vertical
5	2334.4168	45.46	-3.13	42.33	74.00	-31.67	Vertical
6	2657.7072	42.67	-1.84	40.83	74.00	-33.17	Vertical

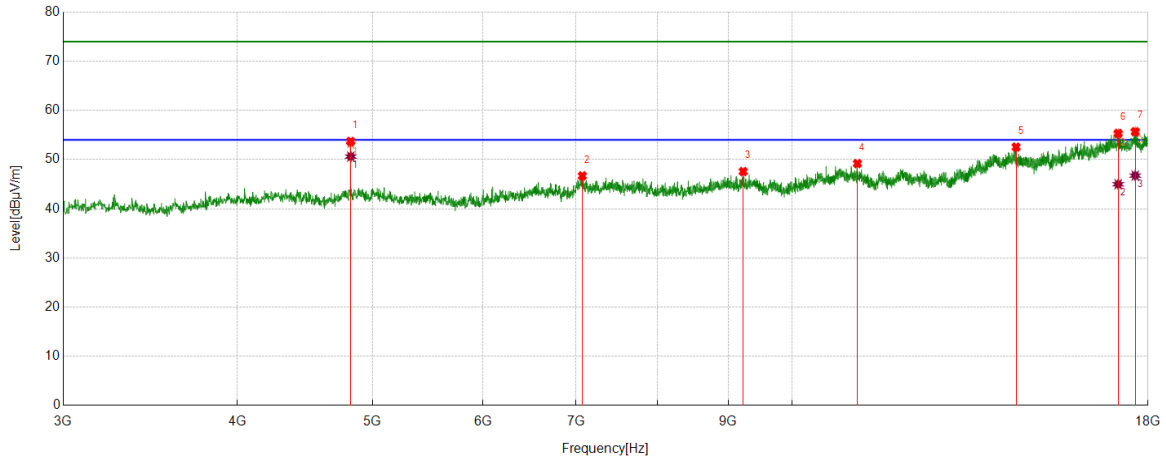
- Note: 1. Measurement = Reading Level + Correct Factor.
 2. If Peak Result complies with AV limit, AV Result is deemed to comply with AV limit.
 3. Test setup: RBW: 1 MHz, VBW: 3 MHz, Sweep time: auto.
 4. Peak: Peak detector.
 5. For below 3GHz part, filter losses were only considered in the spurious frequency bands and the authorized band was not corrected for Band Reject Filter losses.
 6. Only the worst case emission was recorded, if it complies with the limit, the other emissions deemed to comply with the limit.



Part 2: 3GHz~18GHz

HARMONICS AND SPURIOUS EMISSIONS

Test Mode	Channel	Polarization	Verdict
11B	LCH	Horizontal	PASS



PK Result:

No.	Frequency	Reading Level	Correct Factor	Result	Limit	Margin	Remark
	[MHz]	[dBuV/m]	[dB]	[dBuV/m]	[dBuV/m]	[dB]	
1	4822.7278	48.35	5.35	53.70	74.00	-20.30	Horizontal
2	7071.1339	37.44	9.25	46.69	74.00	-27.31	Horizontal
3	9223.903	38.22	9.35	47.57	74.00	-26.43	Horizontal
4	11138.5173	37.03	12.16	49.19	74.00	-24.81	Horizontal
5	14476.4346	36.60	15.94	52.54	74.00	-21.46	Horizontal
6	17135.5169	36.54	18.79	55.33	74.00	-18.67	Horizontal
7	17624.9531	36.29	19.38	55.67	74.00	-18.33	Horizontal

AV Result:

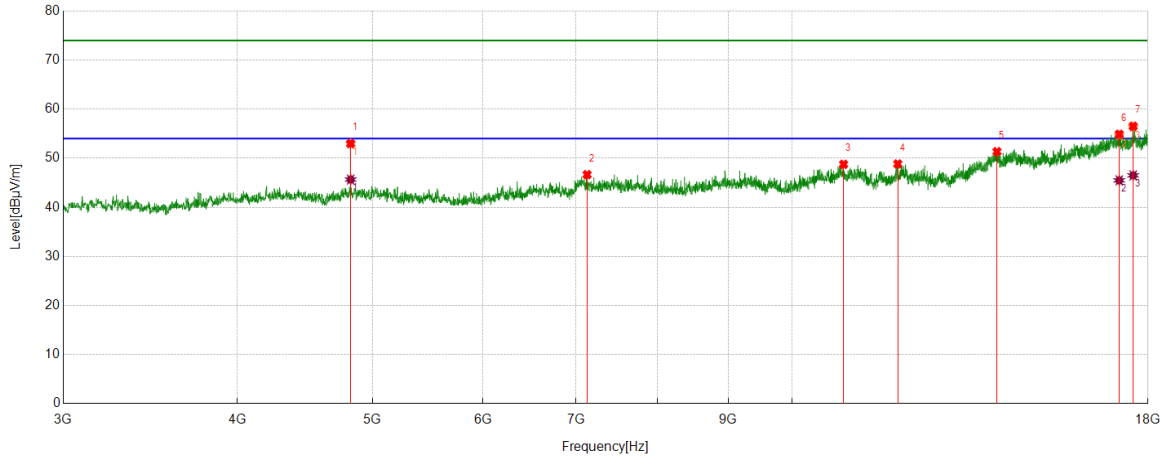
No.	Frequency	Reading Level	Correct Factor	Result	Limit	Margin	Remark
	[MHz]	[dBuV/m]	[dB]	[dBuV/m]	[dBuV/m]	[dB]	
1	4823.8278	45.27	5.35	50.62	54.00	-3.38	Horizontal
2	17135.5169	26.19	18.79	44.98	54.00	-9.02	Horizontal
3	17624.9531	27.36	19.38	46.74	54.00	-7.26	Horizontal

Note: 1. Measurement = Reading Level + Correct Factor.

2. If Peak Result complies with AV limit, AV Result is deemed to comply with AV limit.
3. Peak detector: RBW: 1 MHz, VBW: 3 MHz.
4. Average detector: RBW: 1 MHz, VBW: 1/T MHz(refer to clause 7.1.).
5. For above 3GHz part, filter losses were only considered in the spurious frequency bands and the authorized band was not corrected for HPF losses.
6. Only the worst case emission was recorded, if it complies with the limit, the other emissions deemed to comply with the limit.



Test Mode	Channel	Polarization	Verdict
11B	LCH	Vertical	PASS



PK Result:

No.	Frequency	Reading Level	Correct Factor	Result	Limit	Margin	Remark
	[MHz]	[dBuV/m]	[dB]	[dBuV/m]	[dBuV/m]	[dB]	
1	4822.7278	47.64	5.35	52.99	74.00	-21.01	Vertical
2	7127.3909	37.55	9.11	46.66	74.00	-27.34	Vertical
3	10887.2359	36.49	12.27	48.76	74.00	-25.24	Vertical
4	11905.4882	36.53	12.31	48.84	74.00	-25.16	Vertical
5	14026.3783	35.39	15.96	51.35	74.00	-22.65	Vertical
6	17165.5207	35.95	18.94	54.89	74.00	-19.11	Vertical
7	17564.9456	36.75	19.77	56.52	74.00	-17.48	Vertical

AV Result:

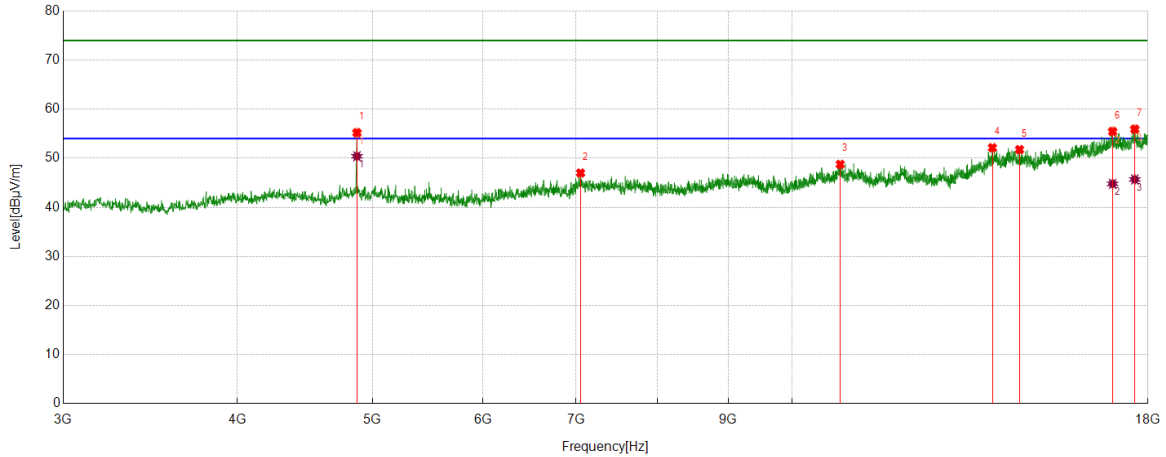
No.	Frequency	Reading Level	Correct Factor	Result	Limit	Margin	Remark
	[MHz]	[dBuV/m]	[dB]	[dBuV/m]	[dBuV/m]	[dB]	
1	4822.7278	40.31	5.35	45.66	54.00	-8.34	Vertical
2	17165.5207	26.55	18.94	45.49	54.00	-8.51	Vertical
3	17564.9456	26.73	19.77	46.50	54.00	-7.50	Vertical

Note: 1. Measurement = Reading Level + Correct Factor.

2. If Peak Result complies with AV limit, AV Result is deemed to comply with AV limit.
3. Peak detector: RBW: 1 MHz, VBW: 3 MHz.
4. Average detector: RBW: 1 MHz, VBW: 1/T MHz(refer to clause 7.1.).
5. For above 3GHz part, filter losses were only considered in the spurious frequency bands and the authorized band was not corrected for HPF losses.
6. Only the worst case emission was recorded, if it complies with the limit, the other emissions deemed to comply with the limit.



Test Mode	Channel	Polarization	Verdict
11B	MCH	Horizontal	PASS



PK Result:

No.	Frequency	Reading Level	Correct Factor	Result	Limit	Margin	Remark
	[MHz]	[dBuV/m]	[dB]	[dBuV/m]	[dBuV/m]	[dB]	
1	4873.3592	49.66	5.54	55.20	74.00	-18.80	Horizontal
2	7050.5063	37.68	9.31	46.99	74.00	-27.01	Horizontal
3	10827.2284	36.52	12.23	48.75	74.00	-25.25	Horizontal
4	13921.3652	36.66	15.48	52.14	74.00	-21.86	Horizontal
5	14558.9449	35.50	16.26	51.76	74.00	-22.24	Horizontal
6	16977.9972	35.53	19.93	55.46	74.00	-18.54	Horizontal
7	17611.8265	36.35	19.58	55.93	74.00	-18.07	Horizontal

AV Result:

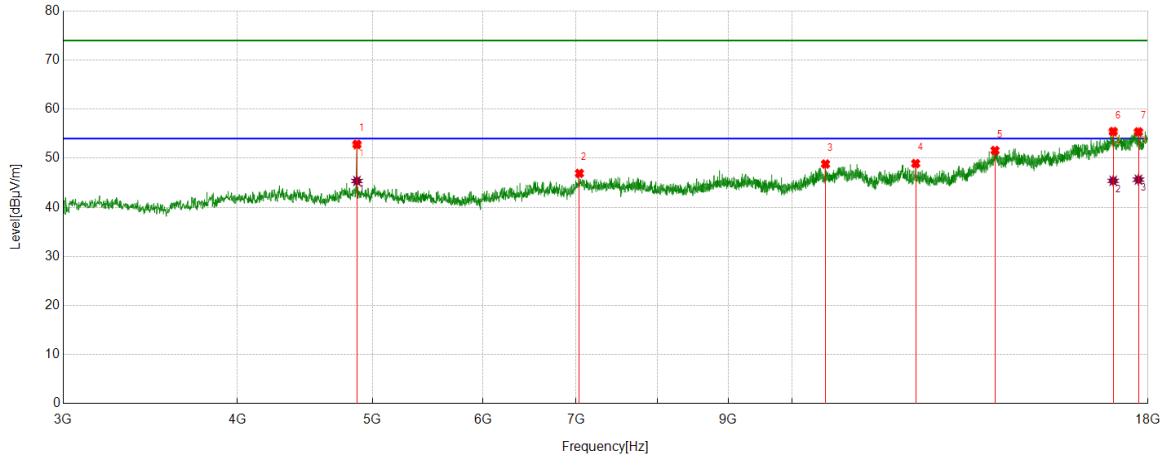
No.	Frequency	Reading Level	Correct Factor	Result	Limit	Margin	Remark
	[MHz]	[dBuV/m]	[dB]	[dBuV/m]	[dBuV/m]	[dB]	
1	4873.3592	44.86	5.54	50.40	54.00	-3.60	Horizontal
2	16977.9972	24.86	19.93	44.79	54.00	-9.21	Horizontal
3	17611.8265	26.10	19.58	45.68	54.00	-8.32	Horizontal

Note: 1. Measurement = Reading Level + Correct Factor.

2. If Peak Result complies with AV limit, AV Result is deemed to comply with AV limit.
3. Peak detector: RBW: 1 MHz, VBW: 3 MHz.
4. Average detector: RBW: 1 MHz, VBW: 1/T MHz(refer to clause 7.1.).
5. For above 3GHz part, filter losses were only considered in the spurious frequency bands and the authorized band was not corrected for HPF losses.
6. Only the worst case emission was recorded, if it complies with the limit, the other emissions deemed to comply with the limit.



Test Mode	Channel	Polarization	Verdict
11B	MCH	Vertical	PASS



PK Result:

No.	Frequency	Reading Level	Correct Factor	Result	Limit	Margin	Remark
	[MHz]	[dBuV/m]	[dB]	[dBuV/m]	[dBuV/m]	[dB]	
1	4873.3592	47.29	5.54	52.83	74.00	-21.17	Vertical
2	7037.3797	37.76	9.16	46.92	74.00	-27.08	Vertical
3	10566.5708	36.90	11.92	48.82	74.00	-25.18	Vertical
4	12263.658	36.58	12.34	48.92	74.00	-25.08	Vertical
5	13981.3727	35.59	15.99	51.58	74.00	-22.42	Vertical
6	16994.8744	36.28	19.16	55.44	74.00	-18.56	Vertical
7	17718.7148	36.01	19.36	55.37	74.00	-18.63	Vertical

AV Result:

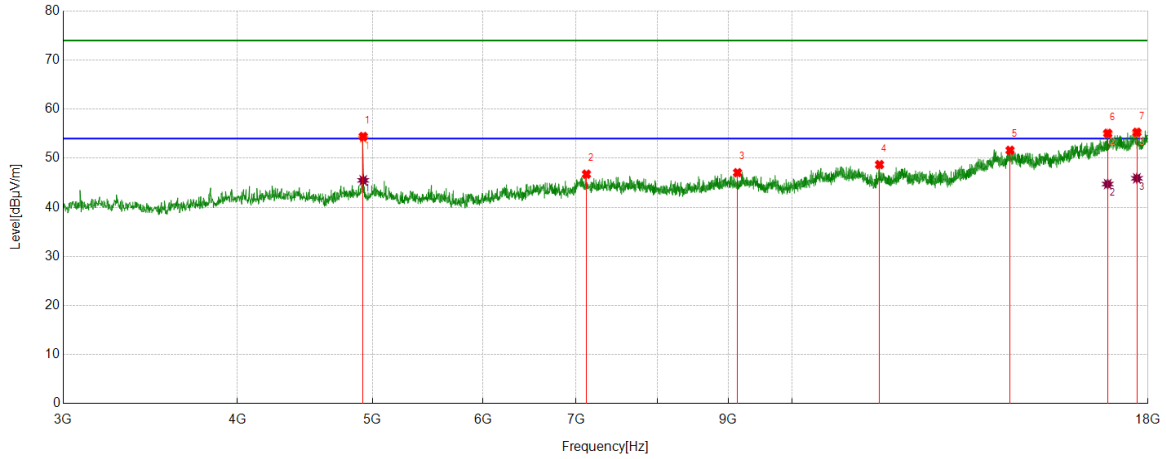
No.	Frequency	Reading Level	Correct Factor	Result	Limit	Margin	Remark
	[MHz]	[dBuV/m]	[dB]	[dBuV/m]	[dBuV/m]	[dB]	
1	4873.3592	39.82	5.54	45.36	54.00	-8.64	Vertical
2	16994.8744	26.24	19.16	45.40	54.00	-8.60	Vertical
3	17718.7148	26.28	19.36	45.64	54.00	-8.36	Vertical

Note: 1. Measurement = Reading Level + Correct Factor.

2. If Peak Result complies with AV limit, AV Result is deemed to comply with AV limit.
3. Peak detector: RBW: 1 MHz, VBW: 3 MHz.
4. Average detector: RBW: 1 MHz, VBW: 1/T MHz(refer to clause 7.1.).
5. For above 3GHz part, filter losses were only considered in the spurious frequency bands and the authorized band was not corrected for HPF losses.
6. Only the worst case emission was recorded, if it complies with the limit, the other emissions deemed to comply with the limit.



Test Mode	Channel	Polarization	Verdict
11B	HCH	Horizontal	PASS



PK Result:

No.	Frequency	Reading Level	Correct Factor	Result	Limit	Margin	Remark
	[MHz]	[dBuV/m]	[dB]	[dBuV/m]	[dBuV/m]	[dB]	
1	4923.9905	48.86	5.56	54.42	74.00	-19.58	Horizontal
2	7119.89	37.66	9.09	46.75	74.00	-27.25	Horizontal
3	9137.6422	37.76	9.30	47.06	74.00	-26.94	Horizontal
4	11552.9441	37.01	11.69	48.70	74.00	-25.30	Horizontal
5	14332.0415	35.54	16.07	51.61	74.00	-22.39	Horizontal
6	16841.1051	36.71	18.37	55.08	74.00	-18.92	Horizontal
7	17673.7092	36.10	19.18	55.28	74.00	-18.72	Horizontal

AV Result:

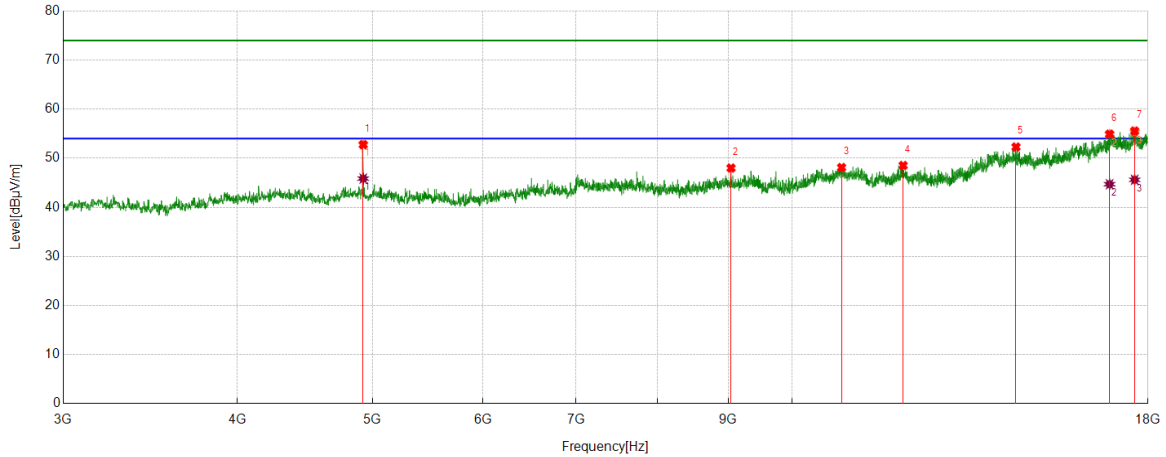
No.	Frequency	Reading Level	Correct Factor	Result	Limit	Margin	Remark
	[MHz]	[dBuV/m]	[dB]	[dBuV/m]	[dBuV/m]	[dB]	
1	4923.9905	39.94	5.56	45.50	54.00	-8.50	Horizontal
2	16841.1051	26.37	18.37	44.74	54.00	-9.26	Horizontal
3	17673.7092	26.73	19.18	45.91	54.00	-8.09	Horizontal

Note: 1. Measurement = Reading Level + Correct Factor.

2. If Peak Result complies with AV limit, AV Result is deemed to comply with AV limit.
3. Peak detector: RBW: 1 MHz, VBW: 3 MHz.
4. Average detector: RBW: 1 MHz, VBW: 1/T MHz(refer to clause 7.1.).
5. For above 3GHz part, filter losses were only considered in the spurious frequency bands and the authorized band was not corrected for HPF losses.
6. Only the worst case emission was recorded, if it complies with the limit, the other emissions deemed to comply with the limit.



Test Mode	Channel	Polarization	Verdict
11B	HCH	Vertical	PASS



PK Result:

No.	Frequency	Reading Level	Correct Factor	Result	Limit	Margin	Remark
	[MHz]	[dBuV/m]	[dB]	[dBuV/m]	[dBuV/m]	[dB]	
1	4923.9905	47.22	5.56	52.78	74.00	-21.22	Vertical
2	9040.13	38.44	9.56	48.00	74.00	-26.00	Vertical
3	10851.6065	35.95	12.16	48.11	74.00	-25.89	Vertical
4	12012.3765	35.69	12.83	48.52	74.00	-25.48	Vertical
5	14474.5593	36.33	15.96	52.29	74.00	-21.71	Vertical
6	16893.6117	36.45	18.46	54.91	74.00	-19.09	Vertical
7	17608.076	35.91	19.63	55.54	74.00	-18.46	Vertical

AV Result:

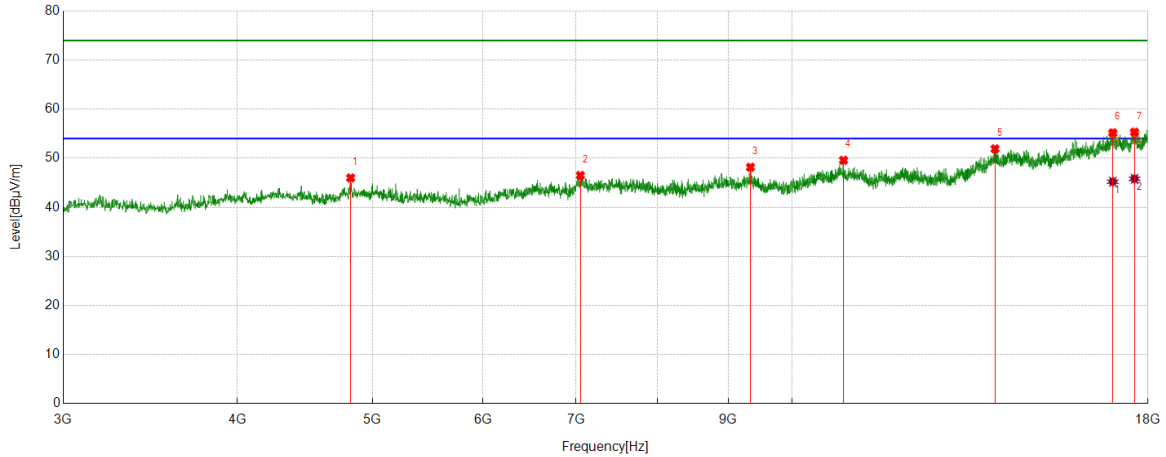
No.	Frequency	Reading Level	Correct Factor	Result	Limit	Margin	Remark
	[MHz]	[dBuV/m]	[dB]	[dBuV/m]	[dBuV/m]	[dB]	
1	4923.9905	40.30	5.56	45.86	54.00	-8.14	Vertical
2	16893.6117	26.25	18.46	44.71	54.00	-9.29	Vertical
3	17608.076	25.98	19.63	45.61	54.00	-8.39	Vertical

Note: 1. Measurement = Reading Level + Correct Factor.

2. If Peak Result complies with AV limit, AV Result is deemed to comply with AV limit.
3. Peak detector: RBW: 1 MHz, VBW: 3 MHz.
4. Average detector: RBW: 1 MHz, VBW: 1/T MHz(refer to clause 7.1.).
5. For above 3GHz part, filter losses were only considered in the spurious frequency bands and the authorized band was not corrected for HPF losses.
6. Only the worst case emission was recorded, if it complies with the limit, the other emissions deemed to comply with the limit.



Test Mode	Channel	Polarization	Verdict
11G	LCH	Horizontal	PASS



PK Result:

No.	Frequency	Reading Level	Correct Factor	Result	Limit	Margin	Remark
	[MHz]	[dBuV/m]	[dB]	[dBuV/m]	[dBuV/m]	[dB]	
1	4822.7278	40.64	5.35	45.99	74.00	-28.01	Horizontal
2	7048.6311	37.21	9.30	46.51	74.00	-27.49	Horizontal
3	9334.5418	38.68	9.49	48.17	74.00	-25.83	Horizontal
4	10885.3607	37.31	12.27	49.58	74.00	-24.42	Horizontal
5	13981.3727	35.91	15.99	51.90	74.00	-22.10	Horizontal
6	16983.623	35.53	19.64	55.17	74.00	-18.83	Horizontal
7	17604.3255	35.72	19.59	55.31	74.00	-18.69	Horizontal

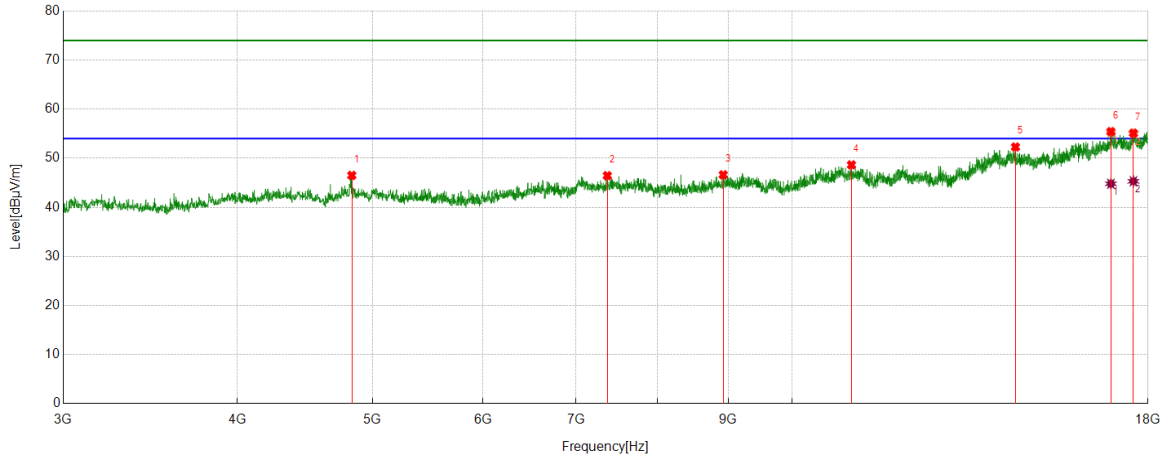
AV Result:

No.	Frequency	Reading Level	Correct Factor	Result	Limit	Margin	Remark
	[MHz]	[dBuV/m]	[dB]	[dBuV/m]	[dBuV/m]	[dB]	
1	16983.623	25.58	19.64	45.22	54.00	-8.78	Horizontal
2	17604.3255	26.22	19.59	45.81	54.00	-8.19	Horizontal

- Note: 1. Measurement = Reading Level + Correct Factor.
 2. If Peak Result complies with AV limit, AV Result is deemed to comply with AV limit.
 3. Peak detector: RBW: 1 MHz, VBW: 3 MHz.
 4. Average detector: RBW: 1 MHz, VBW: 1/T MHz(refer to clause 7.1.).
 5. For above 3GHz part, filter losses were only considered in the spurious frequency bands and the authorized band was not corrected for HPF losses.
 6. Only the worst case emission was recorded, if it complies with the limit, the other emissions deemed to comply with the limit.



Test Mode	Channel	Polarization	Verdict
11G	LCH	Vertical	PASS



PK Result:

No.	Frequency	Reading Level	Correct Factor	Result	Limit	Margin	Remark
	[MHz]	[dBuV/m]	[dB]	[dBuV/m]	[dBuV/m]	[dB]	
1	4832.104	41.10	5.41	46.51	74.00	-27.49	Vertical
2	7369.2962	38.09	8.36	46.45	74.00	-27.55	Vertical
3	8923.8655	37.31	9.32	46.63	74.00	-27.37	Vertical
4	11029.7537	36.17	12.48	48.65	74.00	-25.35	Vertical
5	14461.4327	36.42	15.87	52.29	74.00	-21.71	Vertical
6	16931.1164	36.42	19.00	55.42	74.00	-18.58	Vertical
7	17572.4466	35.14	19.97	55.11	74.00	-18.89	Vertical

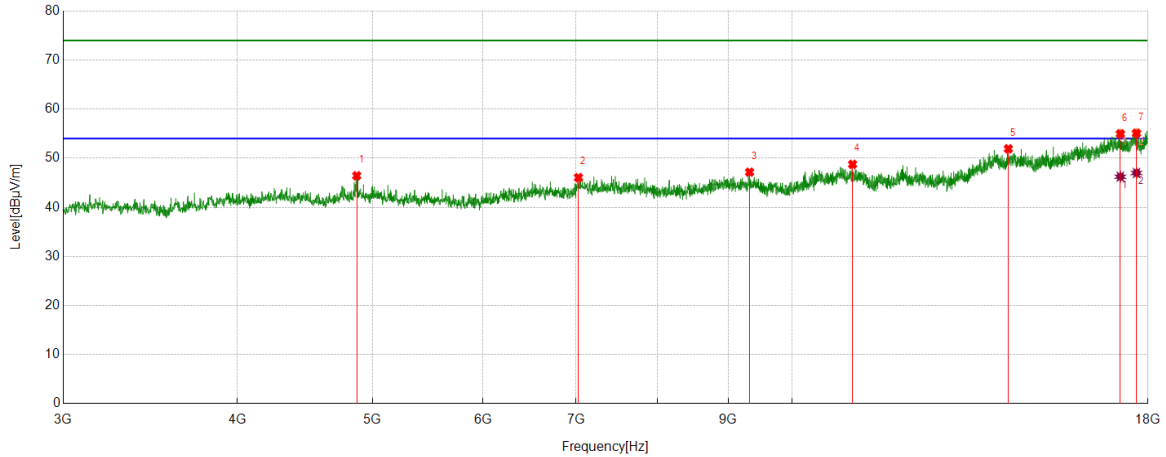
AV Result:

No.	Frequency	Reading Level	Correct Factor	Result	Limit	Margin	Remark
	[MHz]	[dBuV/m]	[dB]	[dBuV/m]	[dBuV/m]	[dB]	
1	16931.1164	25.80	19.00	44.80	54.00	-9.20	Vertical
2	17572.4466	25.34	19.97	45.31	54.00	-8.69	Vertical

- Note: 1. Measurement = Reading Level + Correct Factor.
 2. If Peak Result complies with AV limit, AV Result is deemed to comply with AV limit.
 3. Peak detector: RBW: 1 MHz, VBW: 3 MHz.
 4. Average detector: RBW: 1 MHz, VBW: 1/T MHz(refer to clause 7.1.).
 5. For above 3GHz part, filter losses were only considered in the spurious frequency bands and the authorized band was not corrected for HPF losses.
 6. Only the worst case emission was recorded, if it complies with the limit, the other emissions deemed to comply with the limit.



Test Mode	Channel	Polarization	Verdict
11G	MCH	Horizontal	PASS



PK Result:

No.	Frequency	Reading Level	Correct Factor	Result	Limit	Margin	Remark
	[MHz]	[dBuV/m]	[dB]	[dBuV/m]	[dBuV/m]	[dB]	
1	4871.4839	40.90	5.54	46.44	74.00	-27.56	Horizontal
2	7026.1283	36.84	9.22	46.06	74.00	-27.94	Horizontal
3	9321.4152	37.81	9.35	47.16	74.00	-26.84	Horizontal
4	11050.3813	36.42	12.34	48.76	74.00	-25.24	Horizontal
5	14292.6616	35.93	16.00	51.93	74.00	-22.07	Horizontal
6	17197.3997	35.83	19.15	54.98	74.00	-19.02	Horizontal
7	17662.4578	35.55	19.56	55.11	74.00	-18.89	Horizontal

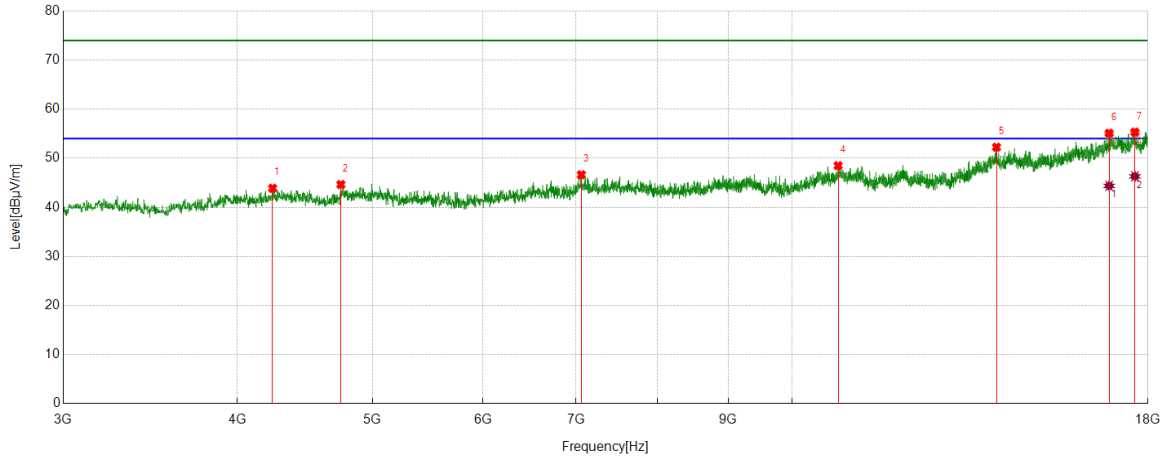
AV Result:

No.	Frequency	Reading Level	Correct Factor	Result	Limit	Margin	Remark
	[MHz]	[dBuV/m]	[dB]	[dBuV/m]	[dBuV/m]	[dB]	
1	17197.3997	27.09	19.15	46.24	54.00	-7.76	Horizontal
2	17662.4578	27.44	19.56	47.00	54.00	-7.00	Horizontal

- Note: 1. Measurement = Reading Level + Correct Factor.
 2. If Peak Result complies with AV limit, AV Result is deemed to comply with AV limit.
 3. Peak detector: RBW: 1 MHz, VBW: 3 MHz.
 4. Average detector: RBW: 1 MHz, VBW: 1/T MHz(refer to clause 7.1.).
 5. For above 3GHz part, filter losses were only considered in the spurious frequency bands and the authorized band was not corrected for HPF losses.
 6. Only the worst case emission was recorded, if it complies with the limit, the other emissions deemed to comply with the limit.



Test Mode	Channel	Polarization	Verdict
11G	MCH	Vertical	PASS



PK Result:

No.	Frequency	Reading Level	Correct Factor	Result	Limit	Margin	Remark
	[MHz]	[dBuV/m]	[dB]	[dBuV/m]	[dBuV/m]	[dB]	
1	4239.5299	38.99	4.89	43.88	74.00	-30.12	Vertical
2	4745.8432	39.66	4.99	44.65	74.00	-29.35	Vertical
3	7059.8825	37.49	9.15	46.64	74.00	-27.36	Vertical
4	10789.7237	36.46	12.03	48.49	74.00	-25.51	Vertical
5	14015.1269	36.39	15.86	52.25	74.00	-21.75	Vertical
6	16882.3603	36.73	18.36	55.09	74.00	-18.91	Vertical
7	17615.5769	35.90	19.42	55.32	74.00	-18.68	Vertical

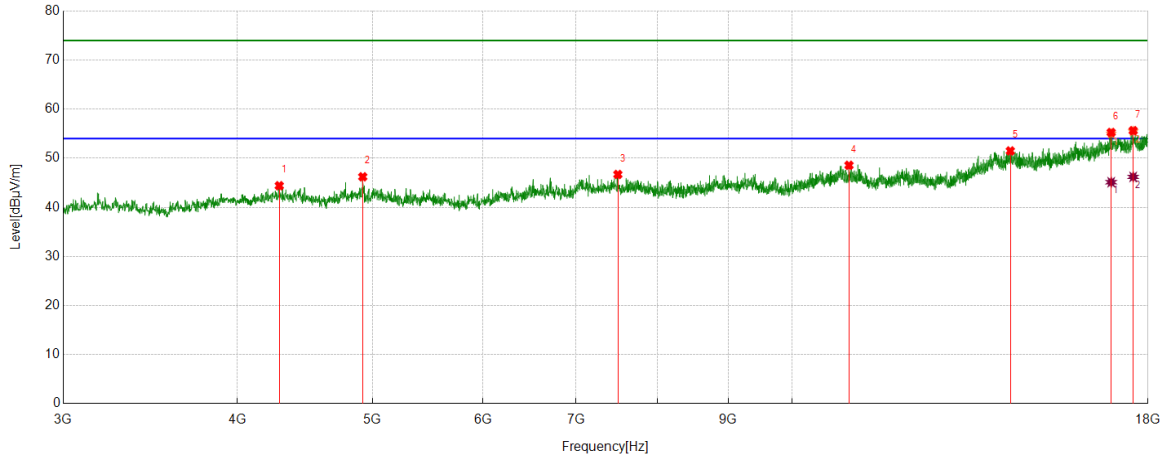
AV Result:

No.	Frequency	Reading Level	Correct Factor	Result	Limit	Margin	Remark
	[MHz]	[dBuV/m]	[dB]	[dBuV/m]	[dBuV/m]	[dB]	
1	16882.3603	26.01	18.36	44.37	54.00	-9.63	Vertical
2	17615.5769	26.88	19.42	46.30	54.00	-7.70	Vertical

- Note: 1. Measurement = Reading Level + Correct Factor.
 2. If Peak Result complies with AV limit, AV Result is deemed to comply with AV limit.
 3. Peak detector: RBW: 1 MHz, VBW: 3 MHz.
 4. Average detector: RBW: 1 MHz, VBW: 1/T MHz(refer to clause 7.1.).
 5. For above 3GHz part, filter losses were only considered in the spurious frequency bands and the authorized band was not corrected for HPF losses.
 6. Only the worst case emission was recorded, if it complies with the limit, the other emissions deemed to comply with the limit.



Test Mode	Channel	Polarization	Verdict
11G	HCH	Horizontal	PASS



PK Result:

No.	Frequency	Reading Level	Correct Factor	Result	Limit	Margin	Remark
	[MHz]	[dBuV/m]	[dB]	[dBuV/m]	[dBuV/m]	[dB]	
1	4286.4108	39.56	4.84	44.40	74.00	-29.60	Horizontal
2	4920.24	40.65	5.57	46.22	74.00	-27.78	Horizontal
3	7498.6873	38.50	8.20	46.70	74.00	-27.30	Horizontal
4	10984.7481	36.20	12.36	48.56	74.00	-25.44	Horizontal
5	14339.5424	35.27	16.22	51.49	74.00	-22.51	Horizontal
6	16938.6173	35.93	19.32	55.25	74.00	-18.75	Horizontal
7	17564.9456	35.85	19.77	55.62	74.00	-18.38	Horizontal

AV Result:

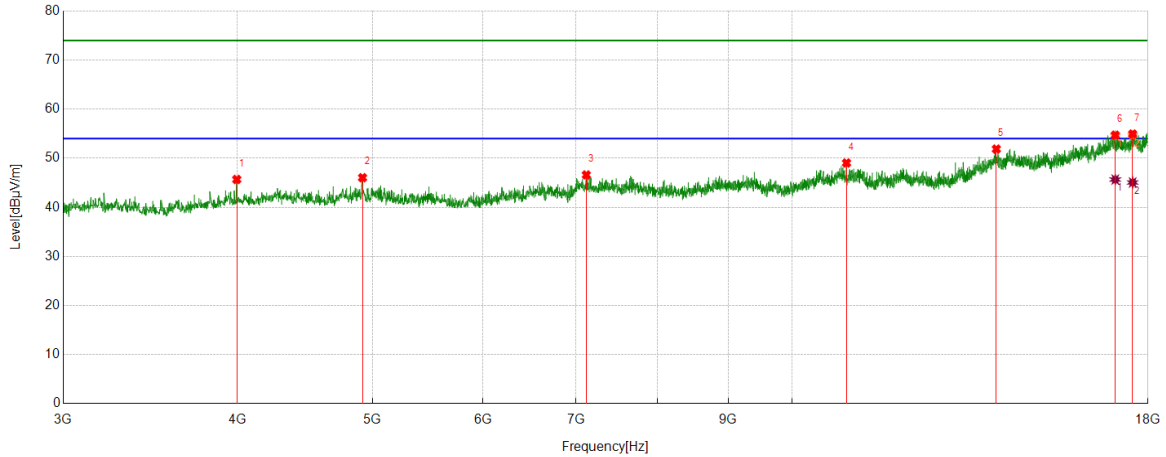
No.	Frequency	Reading Level	Correct Factor	Result	Limit	Margin	Remark
	[MHz]	[dBuV/m]	[dB]	[dBuV/m]	[dBuV/m]	[dB]	
1	16938.6173	25.80	19.32	45.12	54.00	-8.88	Horizontal
2	17564.9456	26.43	19.77	46.20	54.00	-7.80	Horizontal

Note: 1. Measurement = Reading Level + Correct Factor.

2. If Peak Result complies with AV limit, AV Result is deemed to comply with AV limit.
3. Peak detector: RBW: 1 MHz, VBW: 3 MHz.
4. Average detector: RBW: 1 MHz, VBW: 1/T MHz(refer to clause 7.1.).
5. For above 3GHz part, filter losses were only considered in the spurious frequency bands and the authorized band was not corrected for HPF losses.
6. Only the worst case emission was recorded, if it complies with the limit, the other emissions deemed to comply with the limit.



Test Mode	Channel	Polarization	Verdict
11G	HCH	Vertical	PASS



PK Result:

No.	Frequency	Reading Level	Correct Factor	Result	Limit	Margin	Remark
	[MHz]	[dBuV/m]	[dB]	[dBuV/m]	[dBuV/m]	[dB]	
1	3995.7495	41.73	3.95	45.68	74.00	-28.32	Vertical
2	4918.3648	40.50	5.54	46.04	74.00	-27.96	Vertical
3	7118.0148	37.48	9.12	46.60	74.00	-27.40	Vertical
4	10939.7425	36.74	12.29	49.03	74.00	-24.97	Vertical
5	14011.3764	36.01	15.86	51.87	74.00	-22.13	Vertical
6	17053.0066	34.76	19.94	54.70	74.00	-19.30	Vertical
7	17549.9437	35.81	19.12	54.93	74.00	-19.07	Vertical

AV Result:

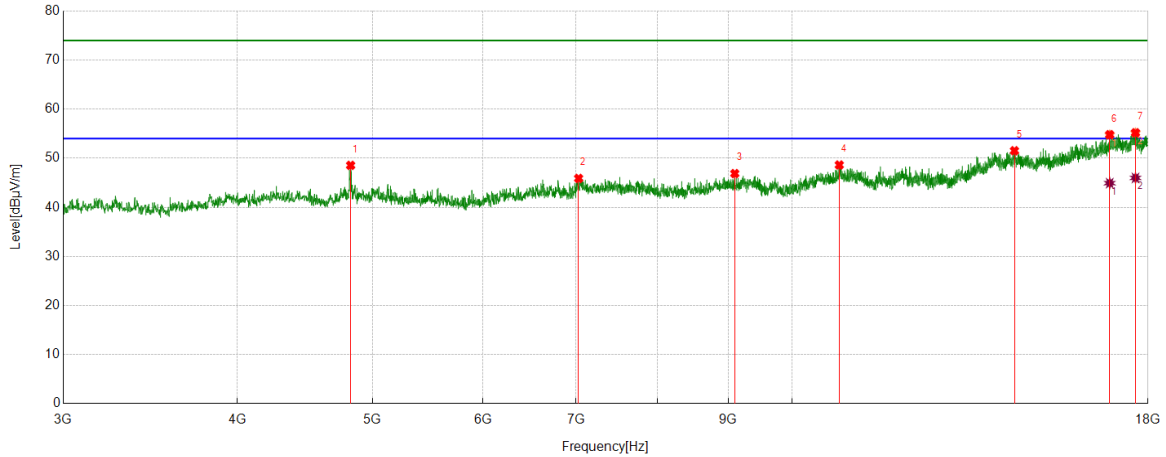
No.	Frequency	Reading Level	Correct Factor	Result	Limit	Margin	Remark
	[MHz]	[dBuV/m]	[dB]	[dBuV/m]	[dBuV/m]	[dB]	
1	17053.0066	25.72	19.94	45.66	54.00	-8.34	Vertical
2	17549.9437	25.94	19.12	45.06	54.00	-8.94	Vertical

Note: 1. Measurement = Reading Level + Correct Factor.

2. If Peak Result complies with AV limit, AV Result is deemed to comply with AV limit.
3. Peak detector: RBW: 1 MHz, VBW: 3 MHz.
4. Average detector: RBW: 1 MHz, VBW: 1/T MHz(refer to clause 7.1.).
5. For above 3GHz part, filter losses were only considered in the spurious frequency bands and the authorized band was not corrected for HPF losses.
6. Only the worst case emission was recorded, if it complies with the limit, the other emissions deemed to comply with the limit.



Test Mode	Channel	Polarization	Verdict
11N HT20	LCH	Horizontal	PASS



PK Result:

No.	Frequency	Reading Level	Correct Factor	Result	Limit	Margin	Remark
	[MHz]	[dBuV/m]	[dB]	[dBuV/m]	[dBuV/m]	[dB]	
1	4822.7278	43.20	5.35	48.55	74.00	-25.45	Horizontal
2	7028.0035	36.69	9.20	45.89	74.00	-28.11	Horizontal
3	9096.387	37.50	9.38	46.88	74.00	-27.12	Horizontal
4	10810.3513	36.52	12.11	48.63	74.00	-25.37	Horizontal
5	14437.0546	35.52	16.01	51.53	74.00	-22.47	Horizontal
6	16897.3622	36.37	18.43	54.80	74.00	-19.20	Horizontal
7	17632.4541	35.73	19.46	55.19	74.00	-18.81	Horizontal

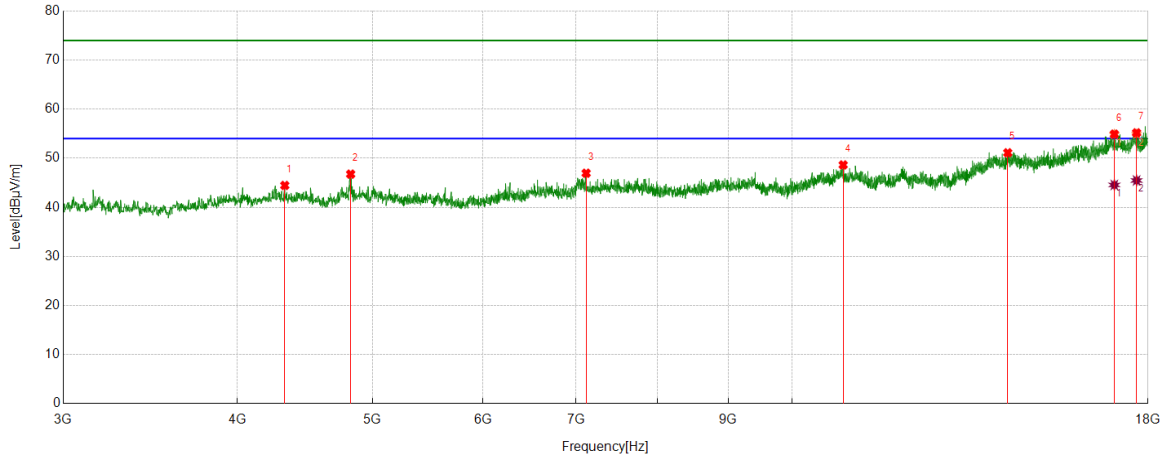
AV Result:

No.	Frequency	Reading Level	Correct Factor	Result	Limit	Margin	Remark
	[MHz]	[dBuV/m]	[dB]	[dBuV/m]	[dBuV/m]	[dB]	
1	16897.3622	26.50	18.43	44.93	54.00	-9.07	Horizontal
2	17632.4541	26.53	19.46	45.99	54.00	-8.01	Horizontal

- Note: 1. Measurement = Reading Level + Correct Factor.
 2. If Peak Result complies with AV limit, AV Result is deemed to comply with AV limit.
 3. Peak detector: RBW: 1 MHz, VBW: 3 MHz.
 4. Average detector: RBW: 1 MHz, VBW: 1/T MHz(refer to clause 7.1.).
 5. For above 3GHz part, filter losses were only considered in the spurious frequency bands and the authorized band was not corrected for HPF losses.
 6. Only the worst case emission was recorded, if it complies with the limit, the other emissions deemed to comply with the limit.



Test Mode	Channel	Polarization	Verdict
11N HT20	LCH	Vertical	PASS



PK Result:

No.	Frequency	Reading Level	Correct Factor	Result	Limit	Margin	Remark
	[MHz]	[dBuV/m]	[dB]	[dBuV/m]	[dBuV/m]	[dB]	
1	4325.7907	39.85	4.61	44.46	74.00	-29.54	Vertical
2	4822.7278	41.41	5.35	46.76	74.00	-27.24	Vertical
3	7116.1395	37.79	9.16	46.95	74.00	-27.05	Vertical
4	10879.735	36.34	12.30	48.64	74.00	-25.36	Vertical
5	14277.6597	35.20	15.91	51.11	74.00	-22.89	Vertical
6	17026.7533	35.67	19.24	54.91	74.00	-19.09	Vertical
7	17664.333	35.66	19.51	55.17	74.00	-18.83	Vertical

AV Result:

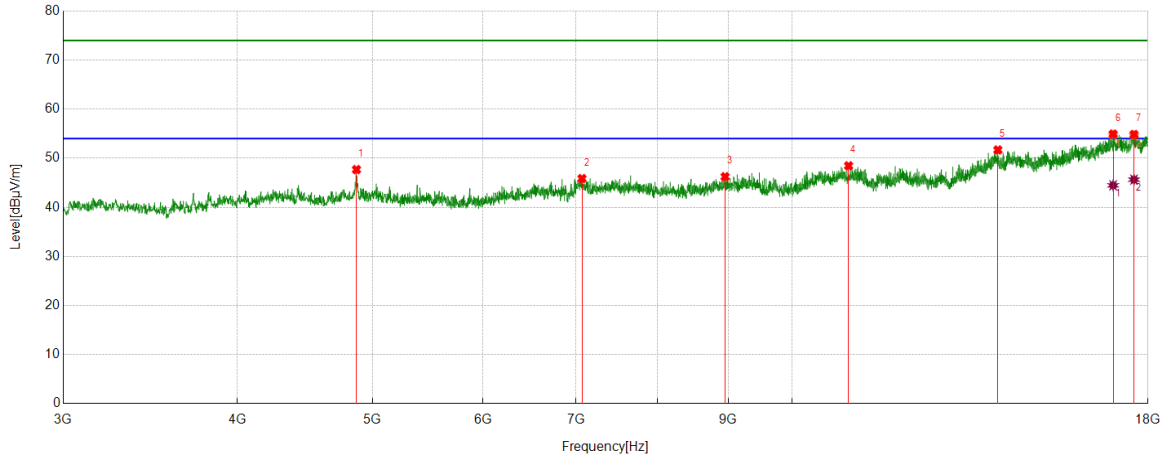
No.	Frequency	Reading Level	Correct Factor	Result	Limit	Margin	Remark
	[MHz]	[dBuV/m]	[dB]	[dBuV/m]	[dBuV/m]	[dB]	
1	17026.7533	25.32	19.24	44.56	54.00	-9.44	Vertical
2	17664.333	25.96	19.51	45.47	54.00	-8.53	Vertical

Note: 1. Measurement = Reading Level + Correct Factor.

2. If Peak Result complies with AV limit, AV Result is deemed to comply with AV limit.
3. Peak detector: RBW: 1 MHz, VBW: 3 MHz.
4. Average detector: RBW: 1 MHz, VBW: 1/T MHz(refer to clause 7.1.).
5. For above 3GHz part, filter losses were only considered in the spurious frequency bands and the authorized band was not corrected for HPF losses.
6. Only the worst case emission was recorded, if it complies with the limit, the other emissions deemed to comply with the limit.



Test Mode	Channel	Polarization	Verdict
11N HT20	MCH	Horizontal	PASS



PK Result:

No.	Frequency	Reading Level	Correct Factor	Result	Limit	Margin	Remark
	[MHz]	[dBuV/m]	[dB]	[dBuV/m]	[dBuV/m]	[dB]	
1	4869.6087	42.15	5.54	47.69	74.00	-26.31	Horizontal
2	7067.3834	36.66	9.20	45.86	74.00	-28.14	Horizontal
3	8951.994	36.72	9.52	46.24	74.00	-27.76	Horizontal
4	10977.2472	36.04	12.42	48.46	74.00	-25.54	Horizontal
5	14047.0059	35.53	16.16	51.69	74.00	-22.31	Horizontal
6	16992.9991	35.76	19.16	54.92	74.00	-19.08	Horizontal
7	17589.3237	35.09	19.75	54.84	74.00	-19.16	Horizontal

AV Result:

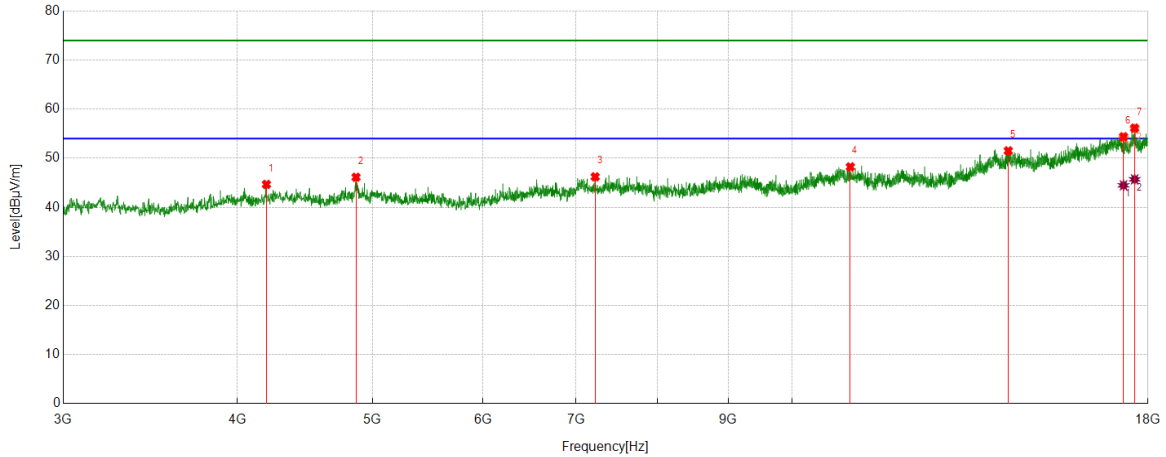
No.	Frequency	Reading Level	Correct Factor	Result	Limit	Margin	Remark
	[MHz]	[dBuV/m]	[dB]	[dBuV/m]	[dBuV/m]	[dB]	
1	16992.9991	25.32	19.16	44.48	54.00	-9.52	Horizontal
2	17589.3237	25.89	19.75	45.64	54.00	-8.36	Horizontal

Note: 1. Measurement = Reading Level + Correct Factor.

2. If Peak Result complies with AV limit, AV Result is deemed to comply with AV limit.
3. Peak detector: RBW: 1 MHz, VBW: 3 MHz.
4. Average detector: RBW: 1 MHz, VBW: 1/T MHz(refer to clause 7.1.).
5. For above 3GHz part, filter losses were only considered in the spurious frequency bands and the authorized band was not corrected for HPF losses.
6. Only the worst case emission was recorded, if it complies with the limit, the other emissions deemed to comply with the limit.



Test Mode	Channel	Polarization	Verdict
11N HT20	MCH	Vertical	PASS



PK Result:

No.	Frequency	Reading Level	Correct Factor	Result	Limit	Margin	Remark
	[MHz]	[dBuV/m]	[dB]	[dBuV/m]	[dBuV/m]	[dB]	
1	4196.3996	39.91	4.76	44.67	74.00	-29.33	Vertical
2	4865.8582	40.68	5.45	46.13	74.00	-27.87	Vertical
3	7223.0279	37.42	8.80	46.22	74.00	-27.78	Vertical
4	11009.1261	35.80	12.44	48.24	74.00	-25.76	Vertical
5	14290.7863	35.53	15.98	51.51	74.00	-22.49	Vertical
6	17287.4109	35.86	18.52	54.38	74.00	-19.62	Vertical
7	17608.076	36.51	19.63	56.14	74.00	-17.86	Vertical

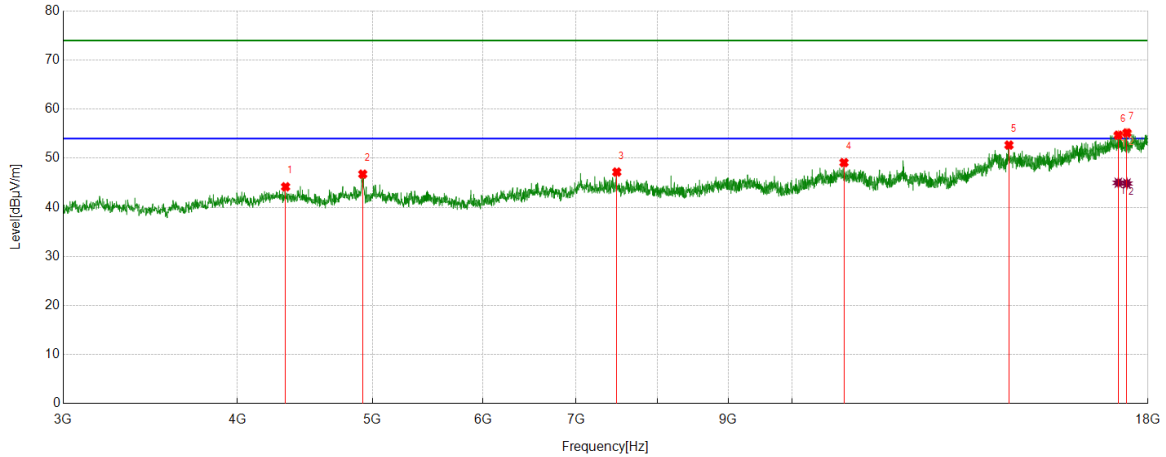
AV Result:

No.	Frequency	Reading Level	Correct Factor	Result	Limit	Margin	Remark
	[MHz]	[dBuV/m]	[dB]	[dBuV/m]	[dBuV/m]	[dB]	
1	17287.4109	25.96	18.52	44.48	54.00	-9.52	Vertical
2	17608.076	26.07	19.63	45.70	54.00	-8.30	Vertical

- Note: 1. Measurement = Reading Level + Correct Factor.
 2. If Peak Result complies with AV limit, AV Result is deemed to comply with AV limit.
 3. Peak detector: RBW: 1 MHz, VBW: 3 MHz.
 4. Average detector: RBW: 1 MHz, VBW: 1/T MHz(refer to clause 7.1.).
 5. For above 3GHz part, filter losses were only considered in the spurious frequency bands and the authorized band was not corrected for HPF losses.
 6. Only the worst case emission was recorded, if it complies with the limit, the other emissions deemed to comply with the limit.



Test Mode	Channel	Polarization	Verdict
11N HT20	HCH	Horizontal	PASS



PK Result:

No.	Frequency	Reading Level	Correct Factor	Result	Limit	Margin	Remark
	[MHz]	[dBuV/m]	[dB]	[dBuV/m]	[dBuV/m]	[dB]	
1	4331.4164	39.53	4.65	44.18	74.00	-29.82	Horizontal
2	4920.24	41.19	5.57	46.76	74.00	-27.24	Horizontal
3	7485.5607	38.84	8.35	47.19	74.00	-26.81	Horizontal
4	10894.7368	36.86	12.25	49.11	74.00	-24.89	Horizontal
5	14307.6635	36.75	15.93	52.68	74.00	-21.32	Horizontal
6	17139.2674	35.86	18.84	54.70	74.00	-19.30	Horizontal
7	17384.9231	36.13	19.03	55.16	74.00	-18.84	Horizontal

AV Result:

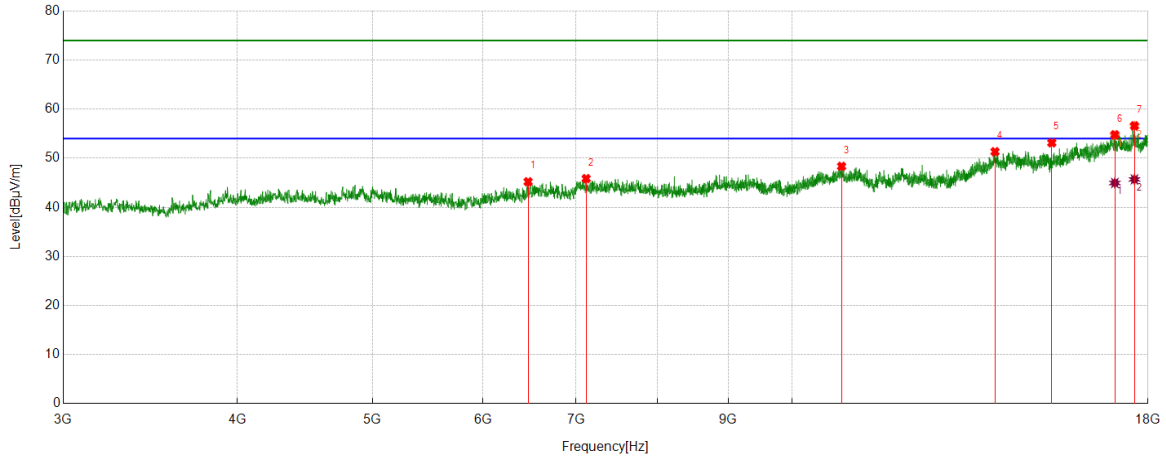
No.	Frequency	Reading Level	Correct Factor	Result	Limit	Margin	Remark
	[MHz]	[dBuV/m]	[dB]	[dBuV/m]	[dBuV/m]	[dB]	
1	17139.2674	26.16	18.84	45.00	54.00	-9.00	Horizontal
2	17384.9231	25.82	19.03	44.85	54.00	-9.15	Horizontal

Note: 1. Measurement = Reading Level + Correct Factor.

2. If Peak Result complies with AV limit, AV Result is deemed to comply with AV limit.
3. Peak detector: RBW: 1 MHz, VBW: 3 MHz.
4. Average detector: RBW: 1 MHz, VBW: 1/T MHz(refer to clause 7.1.).
5. For above 3GHz part, filter losses were only considered in the spurious frequency bands and the authorized band was not corrected for HPF losses.
6. Only the worst case emission was recorded, if it complies with the limit, the other emissions deemed to comply with the limit.



Test Mode	Channel	Polarization	Verdict
11N HT20	HCH	Vertical	PASS



PK Result:

No.	Frequency	Reading Level	Correct Factor	Result	Limit	Margin	Remark
	[MHz]	[dBuV/m]	[dB]	[dBuV/m]	[dBuV/m]	[dB]	
1	6465.4332	37.51	7.70	45.21	74.00	-28.79	Vertical
2	7116.1395	36.69	9.16	45.85	74.00	-28.15	Vertical
3	10851.6065	36.19	12.16	48.35	74.00	-25.65	Vertical
4	13981.3727	35.35	15.99	51.34	74.00	-22.66	Vertical
5	15355.9195	37.73	15.41	53.14	74.00	-20.86	Vertical
6	17041.7552	35.27	19.51	54.78	74.00	-19.22	Vertical
7	17602.4503	37.04	19.57	56.61	74.00	-17.39	Vertical

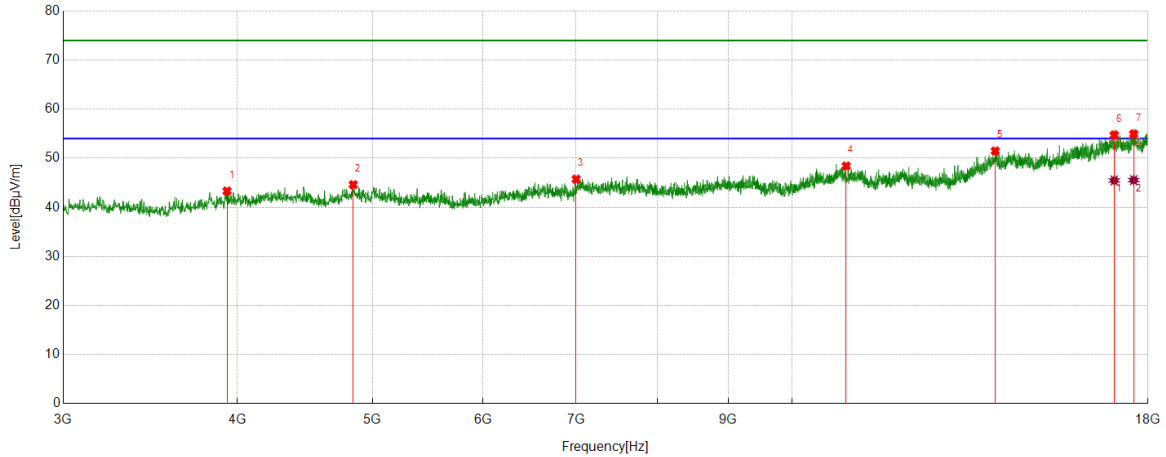
AV Result:

No.	Frequency	Reading Level	Correct Factor	Result	Limit	Margin	Remark
	[MHz]	[dBuV/m]	[dB]	[dBuV/m]	[dBuV/m]	[dB]	
1	17041.7552	25.45	19.51	44.96	54.00	-9.04	Vertical
2	17602.4503	26.12	19.57	45.69	54.00	-8.31	Vertical

- Note: 1. Measurement = Reading Level + Correct Factor.
 2. If Peak Result complies with AV limit, AV Result is deemed to comply with AV limit.
 3. Peak detector: RBW: 1 MHz, VBW: 3 MHz.
 4. Average detector: RBW: 1 MHz, VBW: 1/T MHz(refer to clause 7.1.).
 5. For above 3GHz part, filter losses were only considered in the spurious frequency bands and the authorized band was not corrected for HPF losses.
 6. Only the worst case emission was recorded, if it complies with the limit, the other emissions deemed to comply with the limit.



Test Mode	Channel	Polarization	Verdict
11N HT40	LCH	Horizontal	PASS



PK Result:

No.	Frequency	Reading Level	Correct Factor	Result	Limit	Margin	Remark
	[MHz]	[dBuV/m]	[dB]	[dBuV/m]	[dBuV/m]	[dB]	
1	3931.9915	38.66	4.65	43.31	74.00	-30.69	Horizontal
2	4843.3554	39.17	5.44	44.61	74.00	-29.39	Horizontal
3	6999.875	36.55	9.17	45.72	74.00	-28.28	Horizontal
4	10934.1168	36.09	12.32	48.41	74.00	-25.59	Horizontal
5	13986.9984	35.55	15.92	51.47	74.00	-22.53	Horizontal
6	17024.8781	35.55	19.18	54.73	74.00	-19.27	Horizontal
7	17579.9475	35.25	19.69	54.94	74.00	-19.06	Horizontal

AV Result:

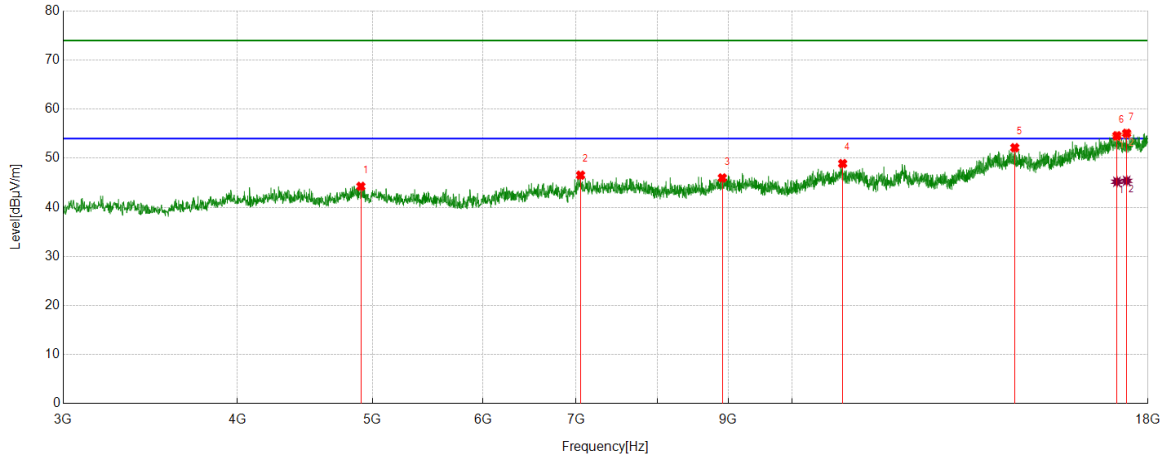
No.	Frequency	Reading Level	Correct Factor	Result	Limit	Margin	Remark
	[MHz]	[dBuV/m]	[dB]	[dBuV/m]	[dBuV/m]	[dB]	
1	17024.8781	26.29	19.18	45.47	54.00	-8.53	Horizontal
2	17579.9475	25.85	19.69	45.54	54.00	-8.46	Horizontal

Note: 1. Measurement = Reading Level + Correct Factor.

2. If Peak Result complies with AV limit, AV Result is deemed to comply with AV limit.
3. Peak detector: RBW: 1 MHz, VBW: 3 MHz.
4. Average detector: RBW: 1 MHz, VBW: 1/T MHz(refer to clause 7.1.).
5. For above 3GHz part, filter losses were only considered in the spurious frequency bands and the authorized band was not corrected for HPF losses.
6. Only the worst case emission was recorded, if it complies with the limit, the other emissions deemed to comply with the limit.



Test Mode	Channel	Polarization	Verdict
11N HT40	LCH	Vertical	PASS



PK Result:

No.	Frequency	Reading Level	Correct Factor	Result	Limit	Margin	Remark
	[MHz]	[dBuV/m]	[dB]	[dBuV/m]	[dBuV/m]	[dB]	
1	4905.2382	38.91	5.36	44.27	74.00	-29.73	Vertical
2	7050.5063	37.24	9.31	46.55	74.00	-27.45	Vertical
3	8910.7388	36.73	9.26	45.99	74.00	-28.01	Vertical
4	10870.3588	36.82	12.09	48.91	74.00	-25.09	Vertical
5	14444.5556	36.10	16.05	52.15	74.00	-21.85	Vertical
6	17099.8875	35.95	18.63	54.58	74.00	-19.42	Vertical
7	17377.4222	36.24	18.85	55.09	74.00	-18.91	Vertical

AV Result:

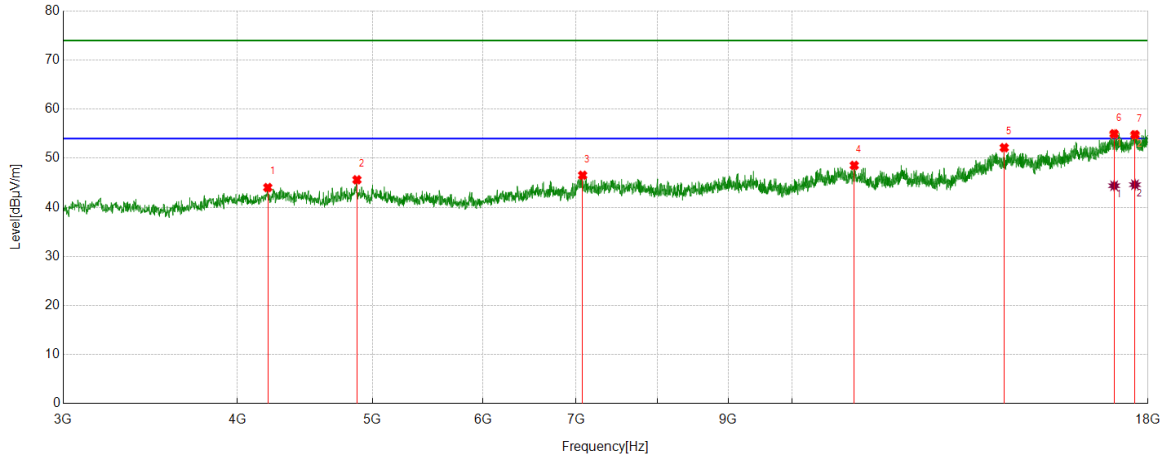
No.	Frequency	Reading Level	Correct Factor	Result	Limit	Margin	Remark
	[MHz]	[dBuV/m]	[dB]	[dBuV/m]	[dBuV/m]	[dB]	
1	17099.8875	26.58	18.63	45.21	54.00	-8.79	Vertical
2	17377.4222	26.55	18.85	45.40	54.00	-8.60	Vertical

Note: 1. Measurement = Reading Level + Correct Factor.

2. If Peak Result complies with AV limit, AV Result is deemed to comply with AV limit.
3. Peak detector: RBW: 1 MHz, VBW: 3 MHz.
4. Average detector: RBW: 1 MHz, VBW: 1/T MHz(refer to clause 7.1.).
5. For above 3GHz part, filter losses were only considered in the spurious frequency bands and the authorized band was not corrected for HPF losses.
6. Only the worst case emission was recorded, if it complies with the limit, the other emissions deemed to comply with the limit.



Test Mode	Channel	Polarization	Verdict
11N HT40	MCH	Horizontal	PASS



PK Result:

No.	Frequency	Reading Level	Correct Factor	Result	Limit	Margin	Remark
	[MHz]	[dBuV/m]	[dB]	[dBuV/m]	[dBuV/m]	[dB]	
1	4205.7757	39.22	4.81	44.03	74.00	-29.97	Horizontal
2	4873.3592	40.07	5.54	45.61	74.00	-28.39	Horizontal
3	7074.8844	37.20	9.33	46.53	74.00	-27.47	Horizontal
4	11080.385	36.25	12.29	48.54	74.00	-25.46	Horizontal
5	14195.1494	36.36	15.79	52.15	74.00	-21.85	Horizontal
6	17021.1276	35.92	19.06	54.98	74.00	-19.02	Horizontal
7	17617.4522	35.45	19.35	54.80	74.00	-19.20	Horizontal

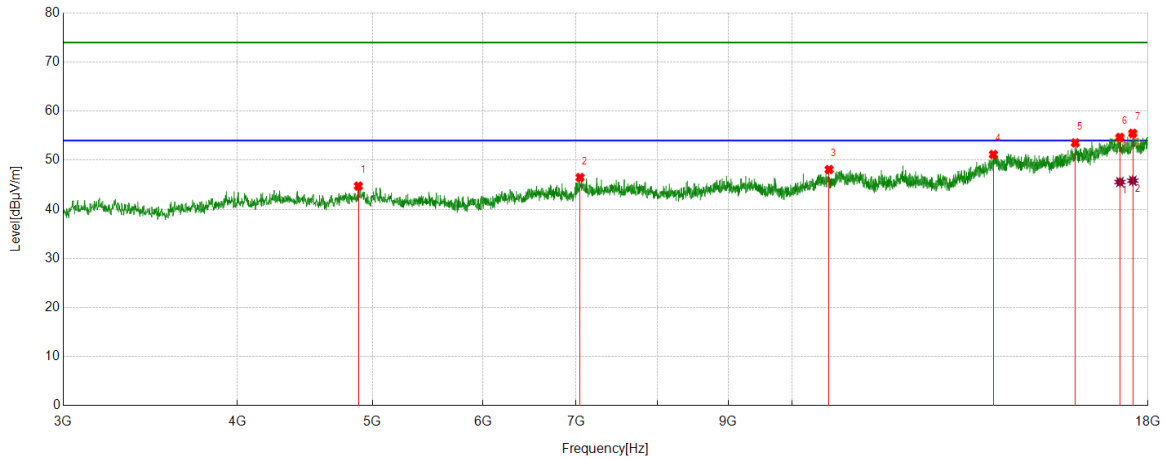
AV Result:

No.	Frequency	Reading Level	Correct Factor	Result	Limit	Margin	Remark
	[MHz]	[dBuV/m]	[dB]	[dBuV/m]	[dBuV/m]	[dB]	
1	17021.1276	25.34	19.06	44.40	54.00	-9.60	Horizontal
2	17617.4522	25.26	19.35	44.61	54.00	-9.39	Horizontal

- Note: 1. Measurement = Reading Level + Correct Factor.
 2. If Peak Result complies with AV limit, AV Result is deemed to comply with AV limit.
 3. Peak detector: RBW: 1 MHz, VBW: 3 MHz.
 4. Average detector: RBW: 1 MHz, VBW: 1/T MHz(refer to clause 7.1.).
 5. For above 3GHz part, filter losses were only considered in the spurious frequency bands and the authorized band was not corrected for HPF losses.
 6. Only the worst case emission was recorded, if it complies with the limit, the other emissions deemed to comply with the limit.



Test Mode	Channel	Polarization	Verdict
11N HT40	MCH	Vertical	PASS



PK Result:

No.	Frequency	Reading Level	Correct Factor	Result	Limit	Margin	Remark
	[MHz]	[dBuV/m]	[dB]	[dBuV/m]	[dBuV/m]	[dB]	
1	4884.6106	39.27	5.48	44.75	74.00	-29.25	Vertical
2	7044.8806	37.25	9.24	46.49	74.00	-27.51	Vertical
3	10630.3288	36.26	11.85	48.11	74.00	-25.89	Vertical
4	13943.868	35.70	15.47	51.17	74.00	-22.83	Vertical
5	15965.3707	36.66	16.89	53.55	74.00	-20.45	Vertical
6	17186.1483	35.60	19.05	54.65	74.00	-19.35	Vertical
7	17553.6942	36.24	19.25	55.49	74.00	-18.51	Vertical

AV Result:

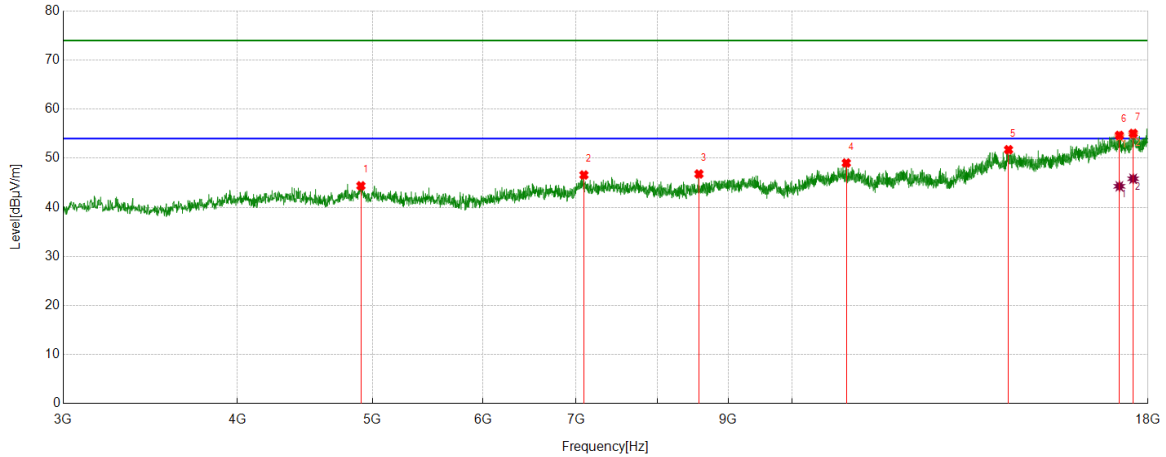
No.	Frequency	Reading Level	Correct Factor	Result	Limit	Margin	Remark
	[MHz]	[dBuV/m]	[dB]	[dBuV/m]	[dBuV/m]	[dB]	
1	17186.1483	26.51	19.05	45.56	54.00	-8.44	Vertical
2	17553.6942	26.58	19.25	45.83	54.00	-8.17	Vertical

Note: 1. Measurement = Reading Level + Correct Factor.

2. If Peak Result complies with AV limit, AV Result is deemed to comply with AV limit.
3. Peak detector: RBW: 1 MHz, VBW: 3 MHz.
4. Average detector: RBW: 1 MHz, VBW: 1/T MHz(refer to clause 7.1.).
5. For above 3GHz part, filter losses were only considered in the spurious frequency bands and the authorized band was not corrected for HPF losses.
6. Only the worst case emission was recorded, if it complies with the limit, the other emissions deemed to comply with the limit.



Test Mode	Channel	Polarization	Verdict
11N HT40	HCH	Horizontal	PASS



PK Result:

No.	Frequency	Reading Level	Correct Factor	Result	Limit	Margin	Remark
	[MHz]	[dBuV/m]	[dB]	[dBuV/m]	[dBuV/m]	[dB]	
1	4905.2382	39.02	5.36	44.38	74.00	-29.62	Horizontal
2	7089.8862	37.24	9.35	46.59	74.00	-27.41	Horizontal
3	8573.1966	38.62	8.17	46.79	74.00	-27.21	Horizontal
4	10935.992	36.72	12.31	49.03	74.00	-24.97	Horizontal
5	14296.4121	35.70	16.04	51.74	74.00	-22.26	Horizontal
6	17169.2712	35.76	18.90	54.66	74.00	-19.34	Horizontal
7	17564.9456	35.29	19.77	55.06	74.00	-18.94	Horizontal

AV Result:

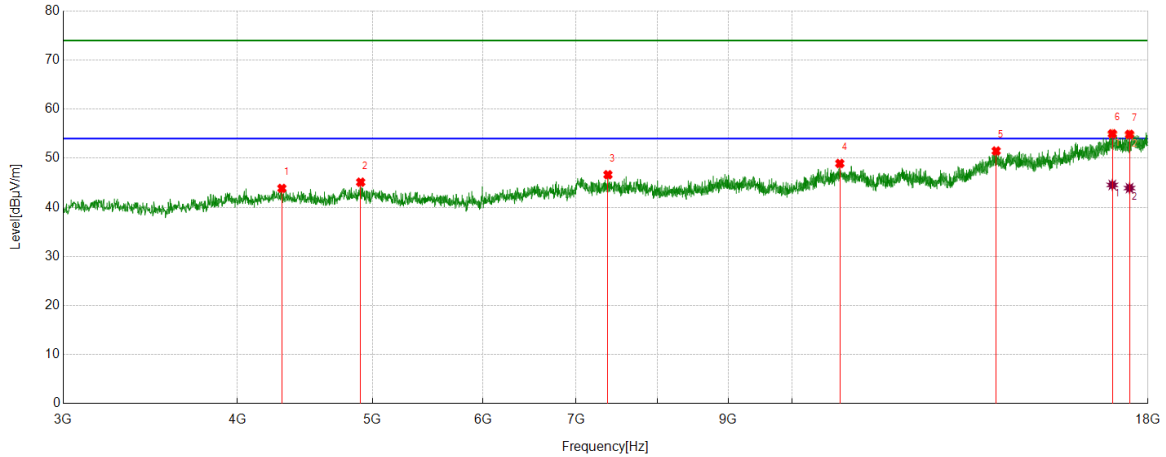
No.	Frequency	Reading Level	Correct Factor	Result	Limit	Margin	Remark
	[MHz]	[dBuV/m]	[dB]	[dBuV/m]	[dBuV/m]	[dB]	
1	17169.2712	25.39	18.90	44.29	54.00	-9.71	Horizontal
2	17564.9456	26.05	19.77	45.82	54.00	-8.18	Horizontal

Note: 1. Measurement = Reading Level + Correct Factor.

2. If Peak Result complies with AV limit, AV Result is deemed to comply with AV limit.
3. Peak detector: RBW: 1 MHz, VBW: 3 MHz.
4. Average detector: RBW: 1 MHz, VBW: 1/T MHz(refer to clause 7.1.).
5. For above 3GHz part, filter losses were only considered in the spurious frequency bands and the authorized band was not corrected for HPF losses.
6. Only the worst case emission was recorded, if it complies with the limit, the other emissions deemed to comply with the limit.



Test Mode	Channel	Polarization	Verdict
11N HT40	HCH	Vertical	PASS



PK Result:

No.	Frequency	Reading Level	Correct Factor	Result	Limit	Margin	Remark
	[MHz]	[dBuV/m]	[dB]	[dBuV/m]	[dBuV/m]	[dB]	
1	4305.1631	39.11	4.75	43.86	74.00	-30.14	Vertical
2	4903.3629	39.76	5.36	45.12	74.00	-28.88	Vertical
3	7376.7971	38.28	8.36	46.64	74.00	-27.36	Vertical
4	10819.7275	36.72	12.21	48.93	74.00	-25.07	Vertical
5	14007.626	35.64	15.84	51.48	74.00	-22.52	Vertical
6	16970.4963	35.00	19.99	54.99	74.00	-19.01	Vertical
7	17459.9325	36.45	18.42	54.87	74.00	-19.13	Vertical

AV Result:

No.	Frequency	Reading Level	Correct Factor	Result	Limit	Margin	Remark
	[MHz]	[dBuV/m]	[dB]	[dBuV/m]	[dBuV/m]	[dB]	
1	16970.4963	24.57	19.99	44.56	54.00	-9.44	Vertical
2	17459.9325	25.50	18.42	43.92	54.00	-10.08	Vertical

Note: 1. Measurement = Reading Level + Correct Factor.

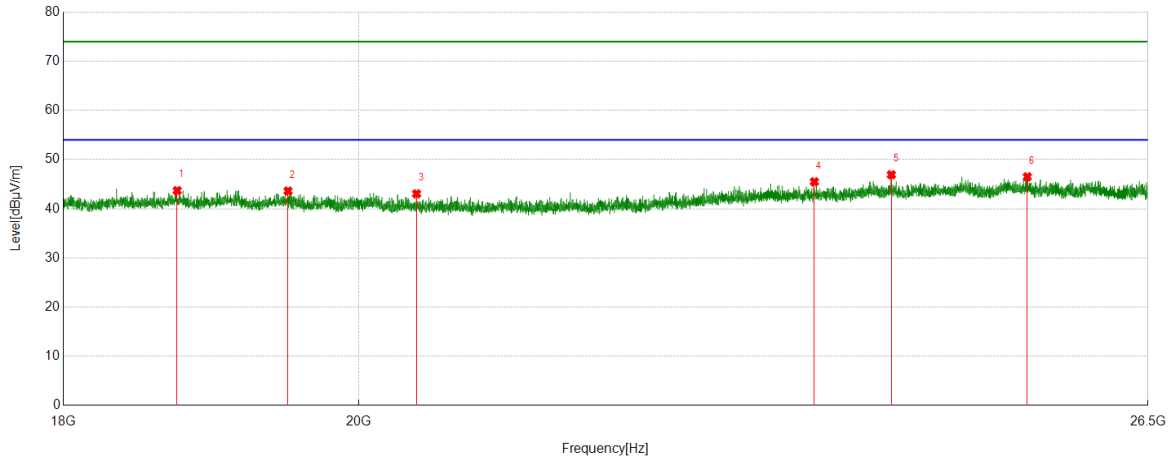
2. If Peak Result complies with AV limit, AV Result is deemed to comply with AV limit.
3. Peak detector: RBW: 1 MHz, VBW: 3 MHz.
4. Average detector: RBW: 1 MHz, VBW: 1/T MHz(refer to clause 7.1.).
5. For above 3GHz part, filter losses were only considered in the spurious frequency bands and the authorized band was not corrected for HPF losses.
6. Only the worst case emission was recorded, if it complies with the limit, the other emissions deemed to comply with the limit.



Part 3: 18GHz~26.5GHz

SPURIOUS EMISSIONS 18GHz TO 26.5GHz (WORST-CASE CONFIGURATION)

Test Mode	Channel	Polarization	Verdict
11B	MCH	Horizontal	PASS

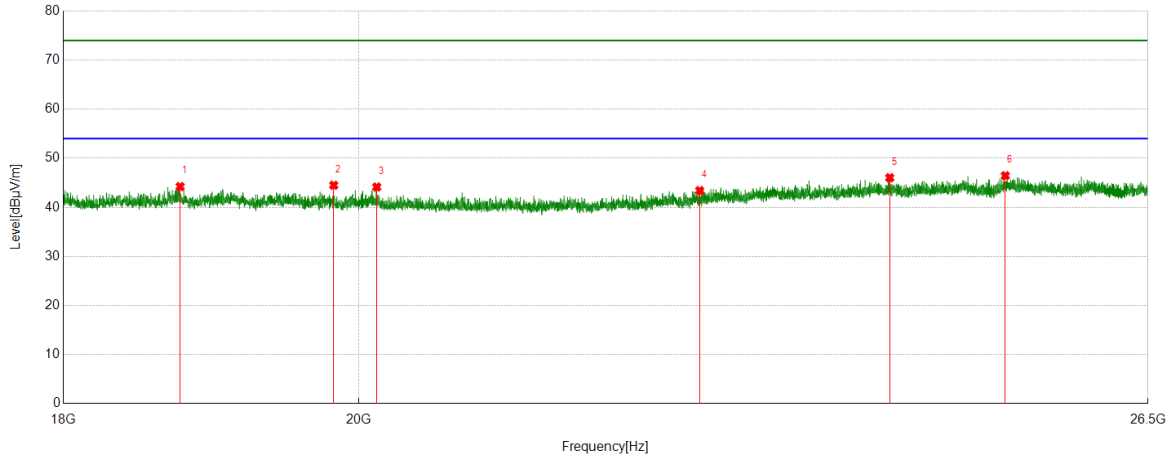


No.	Frequency	Reading Level	Correct Factor	Result	Limit	Margin	Remark
	[MHz]	[dBuV/m]	[dB]	[dBuV/m]	[dBuV/m]	[dB]	
1	18746.3746	49.91	-6.22	43.69	74.00	-30.31	Horizontal
2	19502.1002	49.07	-5.46	43.61	74.00	-30.39	Horizontal
3	20416.7917	48.61	-5.56	43.05	74.00	-30.95	Horizontal
4	23528.1028	48.63	-3.14	45.49	74.00	-28.51	Horizontal
5	24182.6683	49.70	-2.77	46.93	74.00	-27.07	Horizontal
6	25383.8384	49.75	-3.26	46.49	74.00	-27.51	Horizontal

- Note: 1. If Peak Result complies with AV limit, AV Result is deemed to comply with AV limit.
 2. Test setup: RBW: 1 MHz, VBW: 3 MHz, Sweep time: auto.
 3. Measurement = Reading Level + Correct Factor.
 4. Only the worst case emission was recorded, if it complies with the limit, the other emissions deemed to comply with the limit.



Test Mode	Channel	Polarization	Verdict
11B	MCH	Vertical	PASS



No.	Frequency	Reading Level	Correct Factor	Result	Limit	Margin	Remark
	[MHz]	[dBuV/m]	[dB]	[dBuV/m]	[dBuV/m]	[dB]	
1	18765.9266	50.44	-6.21	44.23	74.00	-29.77	Vertical
2	19822.5823	49.79	-5.29	44.50	74.00	-29.50	Vertical
3	20128.6129	49.34	-5.20	44.14	74.00	-29.86	Vertical
4	22585.3585	47.86	-4.46	43.40	74.00	-30.60	Vertical
5	24169.0669	48.79	-2.76	46.03	74.00	-27.97	Vertical
6	25185.7686	49.86	-3.42	46.44	74.00	-27.56	Vertical

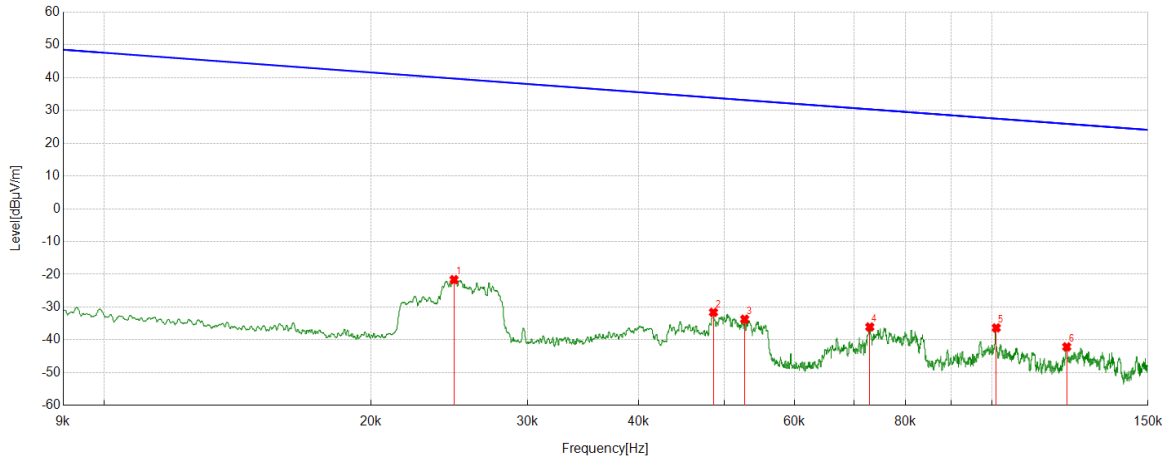
- Note: 1. If Peak Result complies with AV limit, AV Result is deemed to comply with AV limit.
 2. Test setup: RBW: 1 MHz, VBW: 3 MHz, Sweep time: auto.
 3. Measurement = Reading Level + Correct Factor.
 4. Only the worst case emission was recorded, if it complies with the limit, the other emissions deemed to comply with the limit.



Part 4: 30MHz~1GHz

SPURIOUS EMISSIONS 30M TO 1GHz (WORST-CASE CONFIGURATION)

Test Mode	Channel	Polarization	Verdict
11B	MCH	Horizontal	PASS

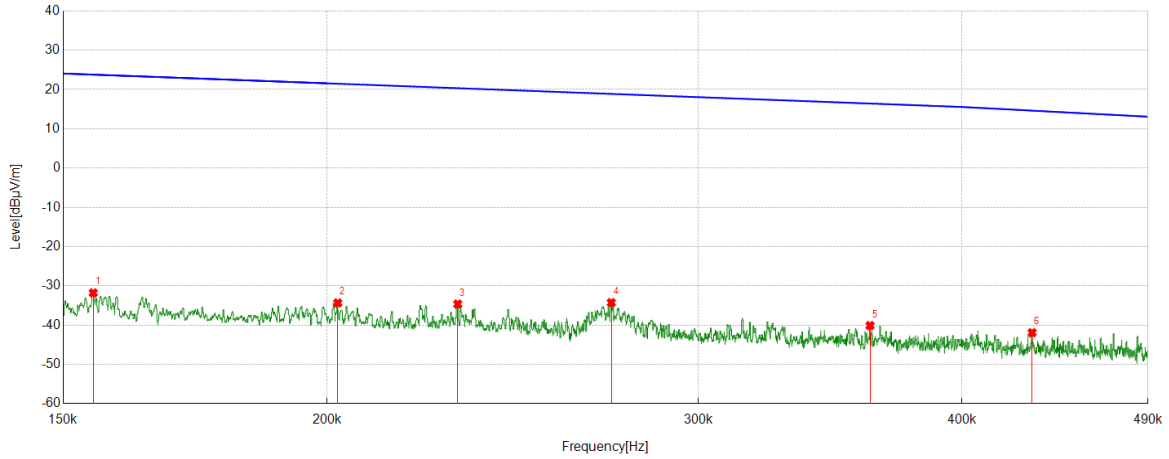


No.	Frequency	Reading Level	Correct Factor	Result	Limit	Margin	Remark
	[MHz]	[dBuV/m]	[dB]	[dBuV/m]	[dBuV/m]	[dB]	
1	0.0248	40.21	-61.84	-21.63	39.70	-61.33	Vertical
2	0.0486	30.20	-61.79	-31.59	33.87	-65.46	Vertical
3	0.0527	28.12	-61.80	-33.68	33.16	-66.84	Vertical
4	0.0729	25.82	-61.87	-36.05	30.35	-66.40	Vertical
5	0.1012	25.56	-61.89	-36.33	27.50	-63.83	Vertical
6	0.1215	19.79	-61.90	-42.11	25.91	-68.02	Vertical

Note: 1. If Peak Result complies with QP limit, QP Result is deemed to comply with QP limit.
 2. Test setup: RBW: 120 kHz, VBW: 300 kHz, Sweep time: auto.
 3. Measurement = Reading Level + Correct Factor.



Test Mode	Channel	Polarization	Verdict
11B	MCH	Vertical	PASS



No.	Frequency	Reading Level	Correct Factor	Result	Limit	Margin	Remark
	[MHz]	[dBuV/m]	[dB]	[dBuV/m]	[dBuV/m]	[dB]	
1	0.155	30.11	-61.91	-31.80	23.80	-55.60	Vertical
2	0.2024	27.58	-61.92	-34.34	21.48	-55.82	Vertical
3	0.2307	27.30	-61.94	-34.64	20.34	-54.98	Vertical
4	0.2728	27.69	-61.96	-34.27	18.88	-53.15	Vertical
5	0.3618	21.87	-61.97	-40.10	16.43	-56.53	Vertical
6	0.4318	20.05	-61.97	-41.92	14.63	-56.55	Vertical

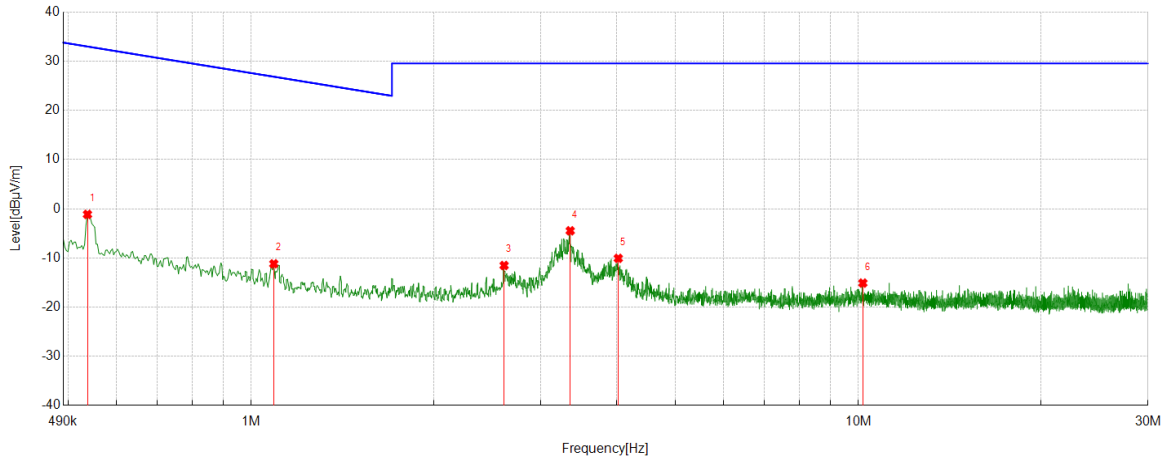
- Note: 1. If Peak Result complies with QP limit, QP Result is deemed to comply with QP limit.
 2. Test setup: RBW: 120 kHz, VBW: 300 kHz, Sweep time: auto.
 3. Measurement = Reading Level + Correct Factor.



Part 5: 9kHz~30MHz

SPURIOUS EMISSIONS Below 30MHz (WORST CASE CONFIGURATION-FACE ON)

Test Mode	Channel	Frequency Range	Verdict
11B	MCH	9kHz~150kHz	PASS

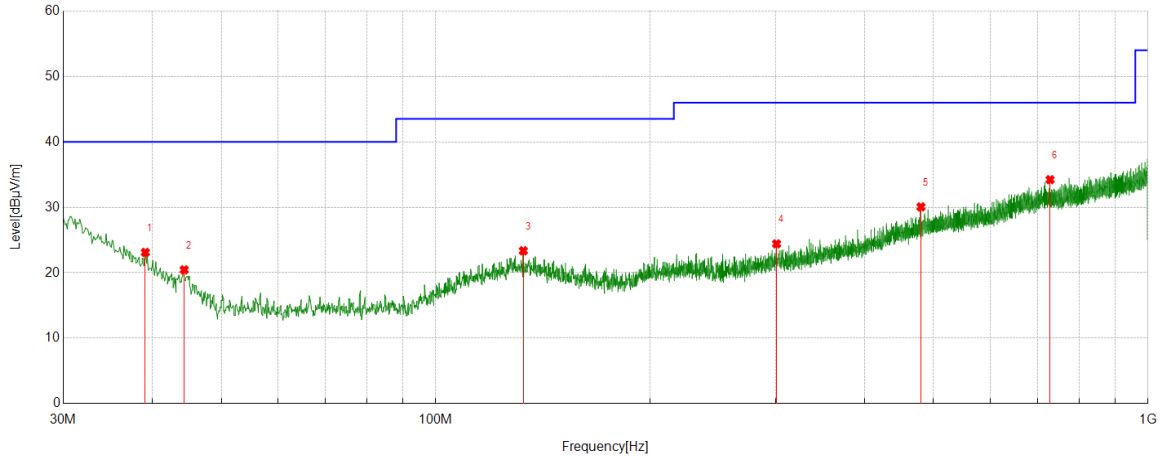


No.	Frequency	Reading Level	Correct Factor	Result	Limit	Margin	Remark
	[MHz]	[dBuV/m]	[dB]	[dBuV/m]	[dBuV/m]	[dB]	
1	0.5372	20.81	-21.95	-1.14	33.00	-34.14	Vertical
2	1.0891	10.73	-21.92	-11.19	26.87	-38.06	Vertical
3	2.609	10.32	-21.85	-11.53	29.54	-41.07	Vertical
4	3.3528	17.35	-21.83	-4.48	29.54	-34.02	Vertical
5	4.0227	11.73	-21.81	-10.08	29.54	-39.62	Vertical
6	10.1732	6.58	-21.69	-15.11	29.54	-44.65	Vertical

- Note: 1. Measurement = Reading Level + Correct Factor.
 2. If Peak Result complies with AV and QP limit, AV and QP Result are deemed to comply with AV limit.
 3. All 3 polarizations(Horizontal, Face-on and Face-off) of the loop antenna had been tested, but only the worst data recorded in the report.



Test Mode	Channel	Frequency Range	Verdict
11B	MCH	150kHz~490kHz	PASS

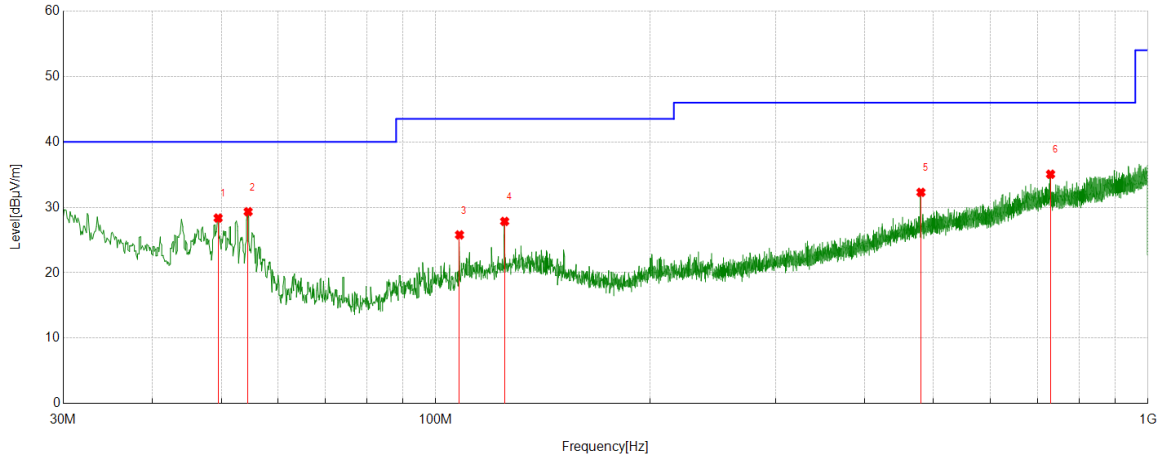


No.	Frequency	Reading Level	Correct Factor	Result	Limit	Margin	Remark
	[MHz]	[dBuV/m]	[dB]	[dBuV/m]	[dBuV/m]	[dB]	
1	39.1189	1.60	21.51	23.11	40.00	-16.89	Horizontal
2	44.3574	2.30	18.15	20.45	40.00	-19.55	Horizontal
3	132.7333	2.33	21.03	23.36	43.50	-20.14	Horizontal
4	301.0451	3.02	21.40	24.42	46.00	-21.58	Horizontal
5	480.028	4.19	25.88	30.07	46.00	-15.93	Horizontal
6	728.6639	4.52	29.71	34.23	46.00	-11.77	Horizontal

- Note: 1. Measurement = Reading Level + Correct Factor.
 2. If Peak Result complies with AV and QP limit, AV and QP Result are deemed to comply with AV limit.
 3. All 3 polarizations(Horizontal, Face-on and Face-off) of the loop antenna had been tested, but only the worst data recorded in the report.



Test Mode	Channel	Frequency Range	Verdict
11B	MCH	490kHz~30MHz	PASS



No.	Frequency	Reading Level	Correct Factor	Result	Limit	Margin	Remark
	[MHz]	[dBuV/m]	[dB]	[dBuV/m]	[dBuV/m]	[dB]	
1	49.499	13.45	14.91	28.36	40.00	-11.64	Vertical
2	54.5435	14.84	14.49	29.33	40.00	-10.67	Vertical
3	107.9958	6.85	18.94	25.79	43.50	-17.71	Vertical
4	124.9725	6.97	20.88	27.85	43.50	-15.65	Vertical
5	480.028	6.41	25.88	32.29	46.00	-13.71	Vertical
6	729.828	5.33	29.73	35.06	46.00	-10.94	Vertical

- Note: 1. Measurement = Reading Level + Correct Factor.
 2. If Peak Result complies with AV and QP limit, AV and QP Result are deemed to comply with AV limit.
 3. All 3 polarizations(Horizontal, Face-on and Face-off) of the loop antenna had been tested, but only the worst data recorded in the report.

9. AC POWER LINE CONDUCTED EMISSIONS

LIMITS

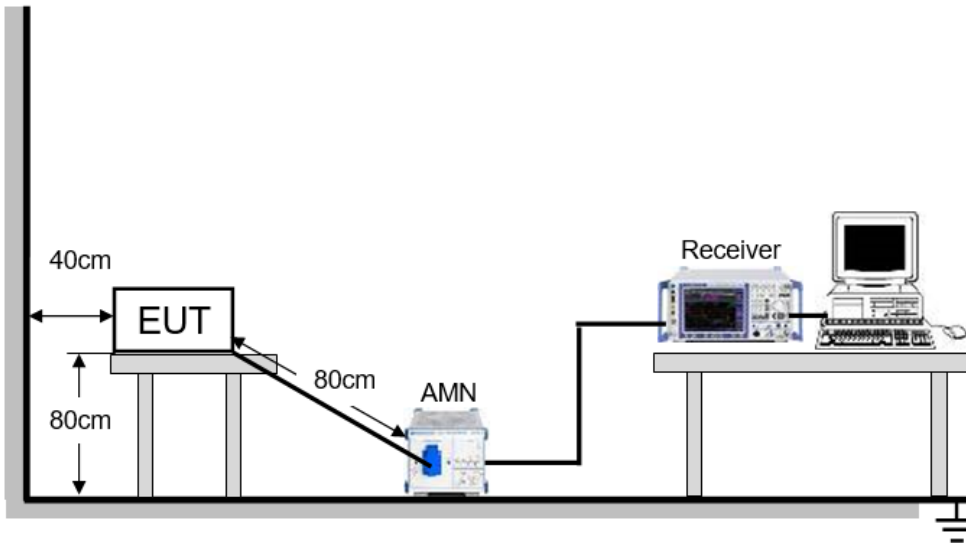
Please refer to FCC §15.207 (a)

FREQUENCY (MHz)	Limit (dBuV)	
	Quasi-peak	Average
0.15 -0.5	66 - 56 *	56 - 46 *
0.50 -5.0	56.00	46.00
5.0 -30.0	60.00	50.00

TEST ENVIRONMENT

Temperature	22°C	Relative Humidity	56%
Atmosphere Pressure	101kPa	Test Voltage	AC 120V

TEST SETUP AND PROCEDURE

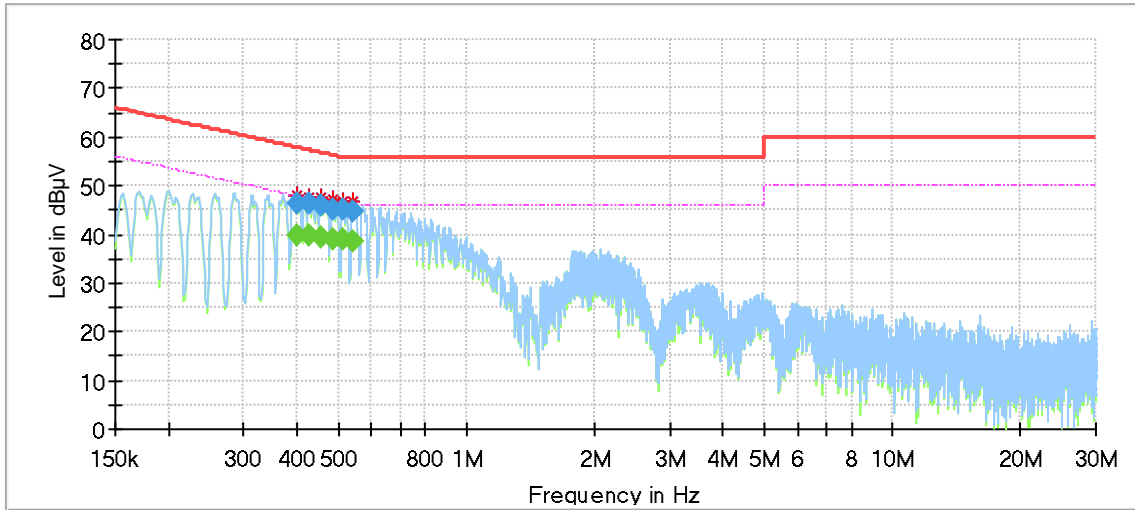


The EUT is put on a table of non-conducting material that is 80cm high. The vertical conducting wall of shielding is located 40cm to the rear of the EUT. The power line of the EUT is connected to the AC mains through an Artificial Mains Network (A.M.N.). A EMI Measurement Receiver (R&S Test Receiver ESR3) is used to test the emissions from both sides of AC line. According to the requirements in Section 6.2 of ANSI C63.10-2013. Conducted emissions from the EUT measured in the frequency range between 0.15 MHz and 30MHz using CISPR Quasi-Peak and average detector mode. The bandwidth of EMI test receiver is set at 9kHz.

The arrangement of the equipment is installed to meet the standards and operating in a manner, which tends to maximize its emission characteristics in a normal application.



LINE L RESULTS (WORST-CASE CONFIGURATION)



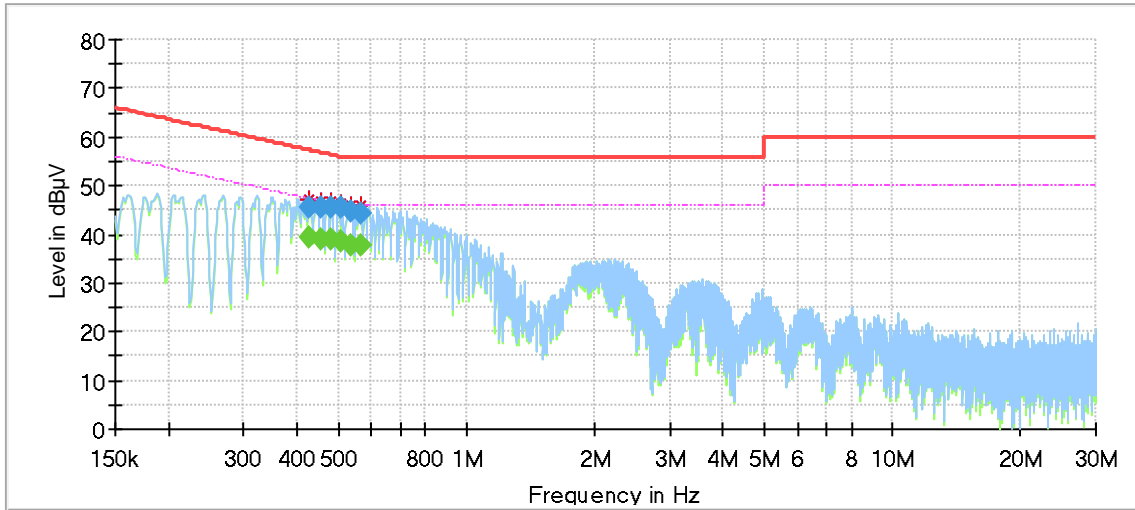
Final_Result

Frequency [MHz]	QuasiPeak [dBµV]	Average [dBµV]	Limit [dBµV]	Margin [dB]	Meas. Time [ms]	Bandwidth [kHz]	Line	Filter	Corr. [dB]
0.399248	---	39.71	47.87	8.16	1000.0	9.000	L1	OFF	9.8
0.399248	46.29	---	57.87	11.58	1000.0	9.000	L1	OFF	9.8
0.427605	---	39.72	47.30	7.57	1000.0	9.000	L1	OFF	9.8
0.427605	46.20	---	57.30	11.10	1000.0	9.000	L1	OFF	9.8
0.455963	---	39.44	46.77	7.33	1000.0	9.000	L1	OFF	9.7
0.455963	45.99	---	56.77	10.78	1000.0	9.000	L1	OFF	9.7
0.485813	45.29	---	56.24	10.95	1000.0	9.000	L1	OFF	9.7
0.485813	---	39.09	46.24	7.14	1000.0	9.000	L1	OFF	9.7
0.514170	45.07	---	56.00	10.93	1000.0	9.000	L1	OFF	9.7
0.514170	---	38.83	46.00	7.17	1000.0	9.000	L1	OFF	9.7
0.542528	---	38.39	46.00	7.61	1000.0	9.000	L1	OFF	9.6
0.542528	44.74	---	56.00	11.26	1000.0	9.000	L1	OFF	9.6

- Note: 1. If QP Result complies with AV limit, AV Result is deemed to comply with AV limit.
 2. Test setup: RBW: 200 Hz (9 kHz—150 kHz), 9 kHz (150 kHz—30 MHz).
 3. Step size: 80Hz (0.009MHz-0.15MHz), 4 kHz (0.15MHz-30MHz), Scan time: auto.
 4. The extension cord/outlet strip was calibrated with the LISN as required by ANSI C63.10:2013 Clause 6.2.2.
 5. Pre-testing all test modes and channels, and find the MCH of 11B which is the worst case, so only the worst case is included in this test report.



LINE N RESULTS (WORST-CASE CONFIGURATION)



Final_Result

Frequency [MHz]	QuasiPeak [dBµV]	Average [dBµV]	Limit [dBµV]	Margin [dB]	Meas. Time [ms]	Bandwidth [kHz]	Line	Filter	Corr. [dB]
0.429098	---	39.44	47.27	7.83	1000.0	9.000	N	OFF	9.5
0.429098	45.72	---	57.27	11.55	1000.0	9.000	N	OFF	9.5
0.455963	---	39.18	46.77	7.59	1000.0	9.000	N	OFF	9.6
0.455963	45.48	---	56.77	11.28	1000.0	9.000	N	OFF	9.6
0.482828	---	38.98	46.29	7.32	1000.0	9.000	N	OFF	9.6
0.482828	45.59	---	56.29	10.70	1000.0	9.000	N	OFF	9.6
0.509693	45.39	---	56.00	10.61	1000.0	9.000	N	OFF	9.6
0.509693	---	38.42	46.00	7.58	1000.0	9.000	N	OFF	9.6
0.536558	44.74	---	56.00	11.26	1000.0	9.000	N	OFF	9.6
0.536558	---	37.86	46.00	8.14	1000.0	9.000	N	OFF	9.6
0.563423	---	37.70	46.00	8.30	1000.0	9.000	N	OFF	9.6
0.563423	44.33	---	56.00	11.67	1000.0	9.000	N	OFF	9.6

- Note: 1. If QP Result complies with AV limit, AV Result is deemed to comply with AV limit.
 2. Test setup: RBW: 200 Hz (9 kHz—150 kHz), 9 kHz (150 kHz—30 MHz).
 3. Step size: 80Hz (0.009MHz-0.15MHz), 4 kHz (0.15MHz-30MHz), Scan time: auto.
 4. The extension cord/outlet strip was calibrated with the LISN as required by ANSI C63.10:2013 Clause 6.2.2.
 5. Pre-testing all test modes and channels, and find the MCH of 11B which is the worst case, so only the worst case is included in this test report.



10. ANTENNA REQUIREMENTS

APPLICABLE REQUIREMENTS

Please refer to FCC §15.203

An intentional radiator shall be designed to ensure that no antenna other than that furnished by the responsible party shall be used with the device. The use of a permanently attached antenna or of an antenna that uses a unique coupling to the intentional radiator shall be considered sufficient to comply with the provisions of this section. The manufacturer may design the unit so that a broken antenna can be replaced by the user, but the use of a standard antenna jack or electrical connector is prohibited.

Please refer to FCC §15.247(b)(4)

The conducted output power limit specified in paragraph (b) of this section is based on the use of antennas with directional gains that do not exceed 6 dBi. Except as shown in paragraph (c) of this section, if transmitting antennas of directional gain greater than 6 dBi are used, the conducted output power from the intentional radiator shall be reduced below the stated values in paragraphs (b)(1), (b)(2), and (b)(3) of this section, as appropriate, by the amount in dB that the directional gain of the antenna exceeds 6 dBi.

ANTENNA GAIN

The antenna gain of EUT is less than 6 dBi

END OF REPORT