



1292701

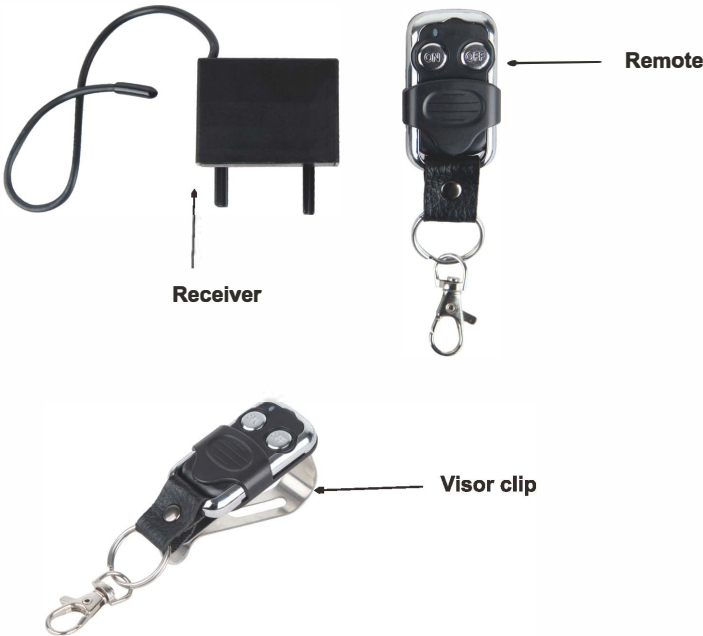
LIGHTING REMOTE CONTROL



User Manual



1292701



1 of 4



1292701

INTENDED USE

This wireless remote control is designed to be used for operating lights,that are typically used on work or off-road vehicles (trucks, jeeps, ATV/UTV, boats, heavy equipment, farm equipment, etc.). The remote works on 12V DC.

Please note that the remote control can be clipped onto a visor, or stored conveniently within the vehicle for easy access. It uses 2pcs CR2032 button cell batteries that are supplied with the kit.

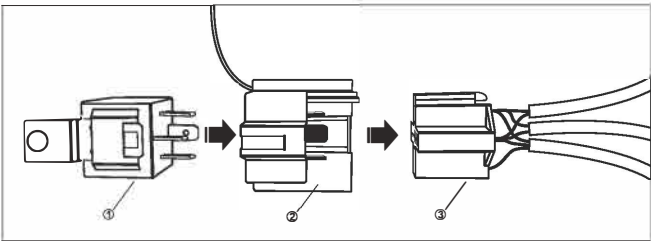
Remote has a range up to 49 ft.

This product is compatible with Traveller® WIRING INSTALL KIT (SKU 1169555).

INSTALL THE REMOTE

Step 1: Unplug the relay of the wiring installation kit (SKU 1169555) into 2 parts: ① & ③.

Step 2: Plug the remote receiver ② into the relay as shown below.



2 of 4

正面



1292701

Step 3: Follow the user manual for SKU 1169555 to install the wiring harness kit and light.

Step 4: Press the button on remote to control the light on/off.

FCC Statement

This equipment has been tested and found to comply with the limits for a Class B digital device, pursuant to Part 15 of the FCC Rules. These limits are designed to provide reasonable protection against harmful interference in a residential installation. This equipment generates uses and can radiate radio frequency energy and, if not installed and used in accordance with the instructions, may cause harmful interference to radio communications. However, there is no guarantee that interference will not occur in a particular installation. If this equipment does cause harmful interference to radio or television reception, which can be determined by turning the equipment off and on, the user is encouraged to try to correct the interference by one or more of the following measures:

- Reorient or relocate the receiving antenna.
- Increase the separation between the equipment and receiver.
- Connect the equipment into an outlet on a circuit different from that to which the receiver is connected.
- Consult the dealer or an experienced radio/TV technician for help.

3 of 4



1292701

FCC Statement

Model No.: 1292701

FCC ID: 2AWYD1292701

Frequency : 433.92MHZ

This device complies with part 15 of the FCC Rules. Operation is subject to the following two conditions:

(1) This device may not cause harmful interference, and (2) this device must accept any interference received, including interference that may cause undesired operation.

Changes or modifications not expressly approved by the party responsible for

compliance could void the user's authority to operate the equipment.

Distributed by:
TRACTOR SUPPLY COMPANY
5401 VIRGINIA WAY
BRENTWOOD, TN 37027
For customer support,
Call: 1-888-376-9601
www.TractorSupply.com
MADE IN CHINA

4 of 4

背面