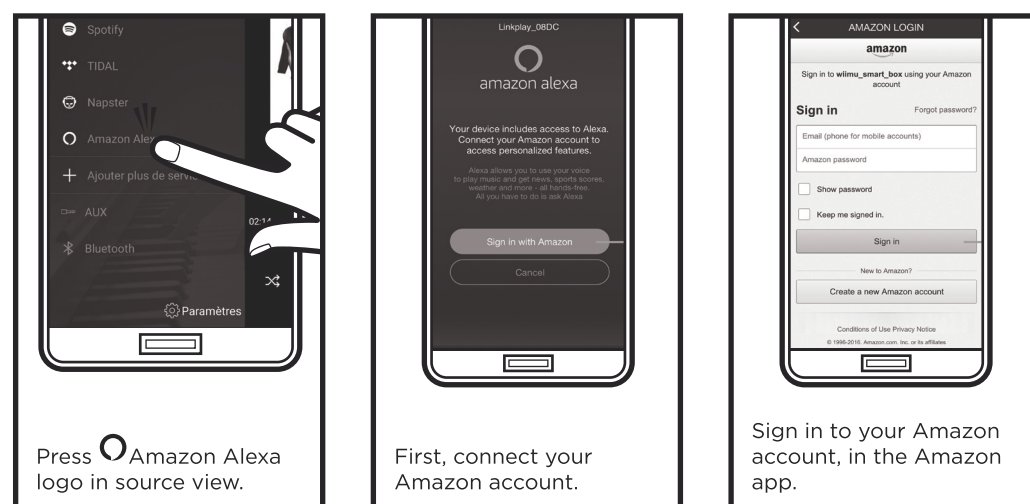


Using Alexa

Connect your Amazon account

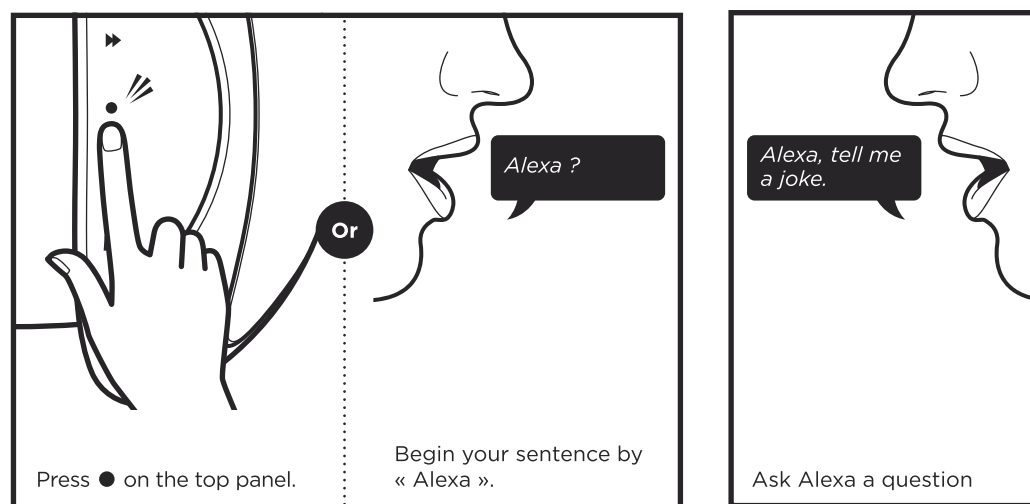


Press **A** Amazon Alexa logo in source view.

First, connect your Amazon account.

Sign in to your Amazon account, in the Amazon app.

Activate Alexa



Press **A** on the top panel.

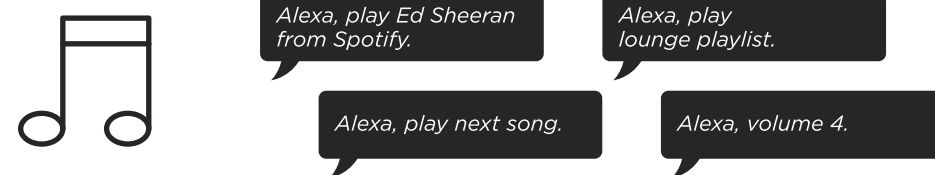
Begin your sentence by « Alexa ».

Ask Alexa a question

7

Using Alexa

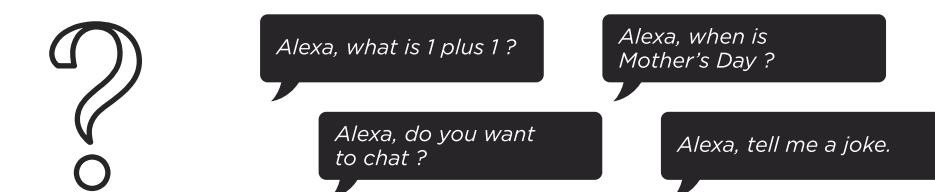
Questions about music



Questions about news, weather, & traffic



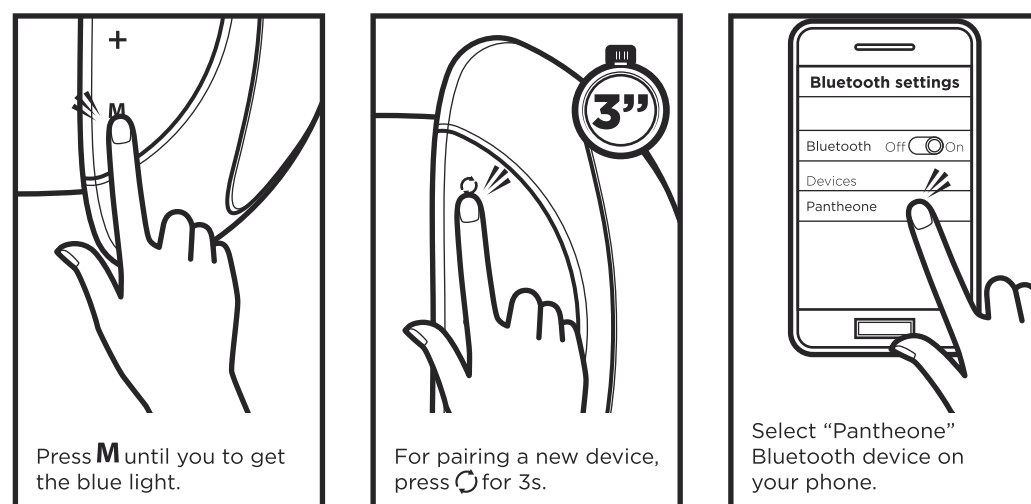
Questions & answers



8

Choose other source

Bluetooth mode

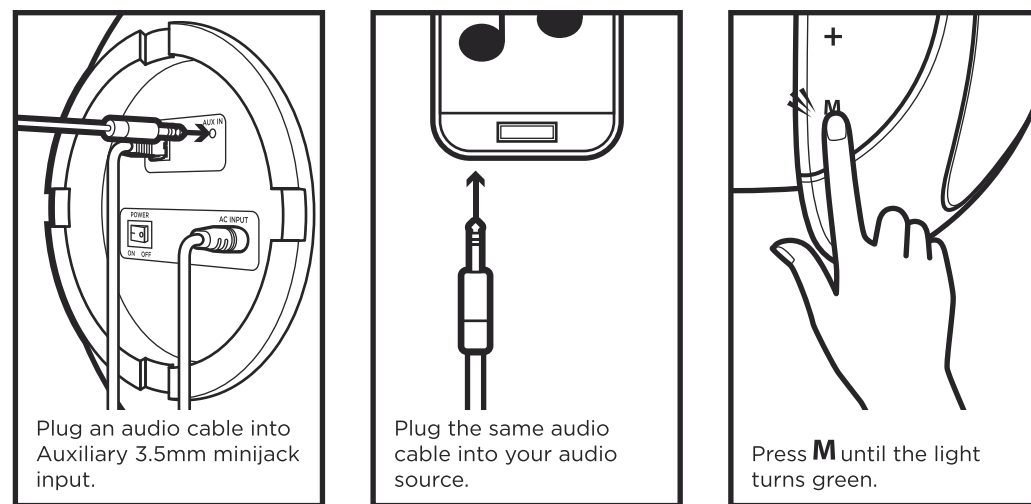


Press **M** until you to get the blue light.

For pairing a new device, press **3** for 3s.

Select "Pantheone" Bluetooth device on your phone.

Auxiliary mode



Plug an audio cable into Auxiliary 3.5mm minijack input.

Plug the same audio cable into your audio source.

Press **M** until the light turns green.

9

Certifications and techsheet

Certifications



Amazon, Alexa and all related logos are trademarks of Amazon.com, Inc. or its affiliates.



Spotify and Spotify logos are trademarks of the Spotify Group. Use your phone, tablet or computer as a remote control for Spotify. Go to [spotify.com/connect](https://www.spotify.com/connect) to learn how. The Spotify Software is subject to third party licenses found here: <https://www.spotify.com/connect/third-party-licenses>.

Technical specifications

Power	2 x 130W + 2 x 70W
Tweeters	4x 0.75" silk dome
Midranges	2 x 4" coated paper cone
Woofers	2 x 6.5" high excursion design
Frequency response	33 - 22 000Hz
Streaming	Spotify connect, Amazon music, Tidal, Tuneln, DLNA and other services Streaming rate up to 24 bit/192K Supported codecs : APE, FLAC, WAV, Apple Lossless Audio(ALAC), AAC, AAC-LC, HE- AAC, HE-AAC v2
Inputs	Aux input: 1x minijack Network: 1x Ethernet 10/100M RJ45 Multiroom: up to 8 rooms
Wifi	Band 802.11b/g/n 2.4GHz
Bluetooth	Bluetooth version 4.2 Supported codec SBC, AAC, APTX
Dimensions	653 x 460 x 437mm
Materials	Hand Made Polished Resin, ABS Plastic & High-Quality Acoustic Fabric
Net Weight	25kg

10

Safety Instructions



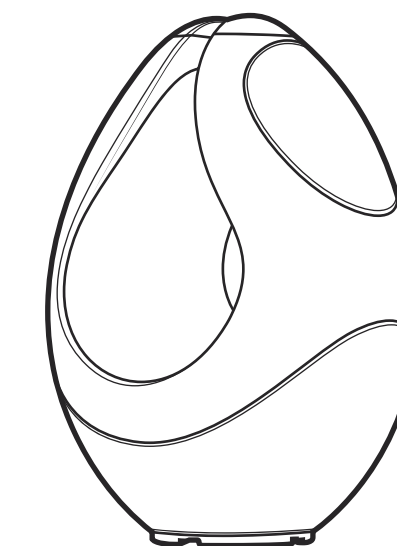
IMPORTANT SAFETY INSTRUCTIONS

1. Read these instructions.
2. Keep these instructions.
3. Heed all warnings.
4. Follow all instructions.
5. Do not use this apparatus near water.
6. Clean only with dry cloth.
7. Operating temperature (°C) 5-40 Humidity (%) no condensation 30-90
8. Do not block any ventilation openings. Install in accordance with the manufacturer's instructions.
9. Minimum distances around the apparatus for sufficient ventilation, 10cm.
10. The ventilation should not be impeded by covering the ventilation openings with items, such as newspapers, table-cloths, curtains, etc.
11. Do not install near any heat sources such as radiators, heat registers, stoves, or other apparatus (including amplifiers) that produce heat.
12. Protect the power cord from being walked on or pinched particularly at plugs, convenience receptacles, and the point where they exit from the apparatus.
13. Only use attachments/accessories specified by the manufacturer.
14. Unplug this apparatus during lightning storms or when unused for long periods of time.
15. Refer all servicing to qualified service personnel. Servicing is required when the apparatus has been damaged in any way, such as power-supply cord or plug is damaged, liquid has been spilled or objects have fallen into the apparatus, the apparatus has been exposed to rain or moisture, does not operate normally, or has been dropped.
16. Damage Requiring Service Unplug the apparatus from the wall outlet and refer servicing to qualified service personnel under the following conditions: A. When the power-supply cord or plug is damaged, B. If liquid has been spilled, or objects have fallen into the apparatus, C. If the apparatus has been exposed to rain or water, D. If the apparatus does not operate normally by following the operating instructions. Adjust only those controls that are covered by the operating instructions as an improper adjustment of other controls may result in damage and will often require extensive work by a qualified technician to restore the apparatus to its normal operation, E. If the apparatus has been dropped or damaged in any way, and F. When the apparatus exhibits a distinct change in performance this indicates a need for service.
17. Object and Liquid Entry Never push objects of any kind into the apparatus through openings as they may touch dangerous voltage points or short-out parts that could result in a fire or electric shock. The apparatus shall not be exposed to dripping or splashing and no objects filled with liquids, such as vases shall be placed on the apparatus. No naked flame sources such as lighted candles etc., should never be placed on the apparatus.
18. Batteries Always consider the environmental issues and follow local regulations when disposing of batteries. 19. The power cord for this apparatus is intended for indoor use only

11



PANTHEONE Quick start guide

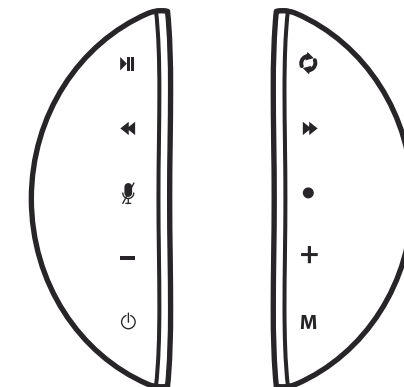


www.pantheoneaudio.com

User interface

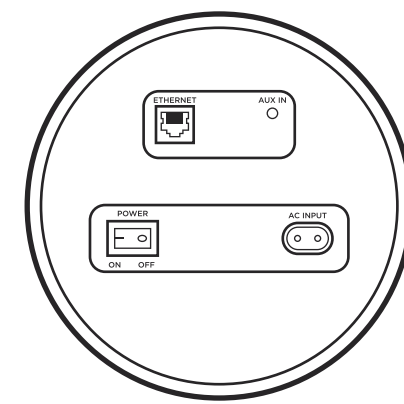
Top touch panel

- HI Play / Pause**
Hold for 3s to turn On/Off the 3D music effect
- Skip Backward**
- Microphone mute**
- Volume down**
A double Bip sound will be generated when reaching minimum level
- Power**
On : White
Standby : Red
See Standby management remarks
Long press to enter standby or wake up from standby.
- Pairing**
For Wifi (WPS) and Bluetooth mode long press
- Skip Forward**
- Alexa manual request**
- Volume up**
A double Bip sound will be generated when reaching maximum level
- M Input Mode selection.**
WiFi : White
Bluetooth : Blue
Auxiliary : Green, hold for 10s for factory reset



Bottom amplifier

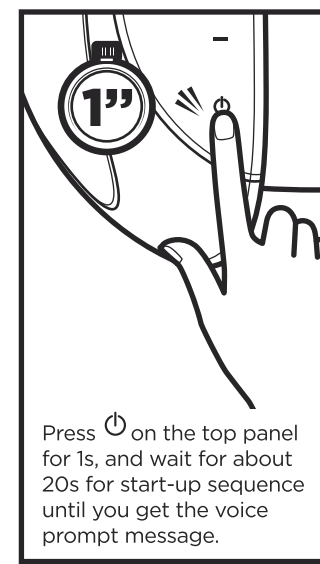
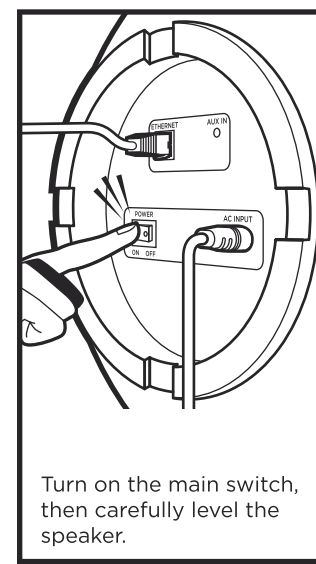
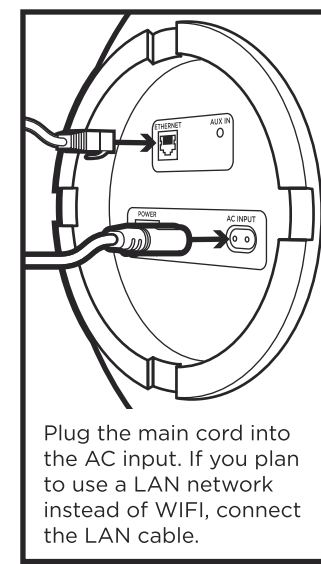
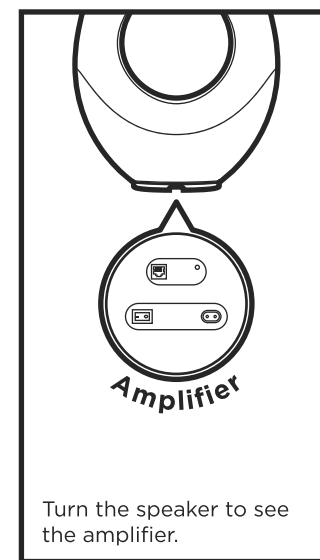
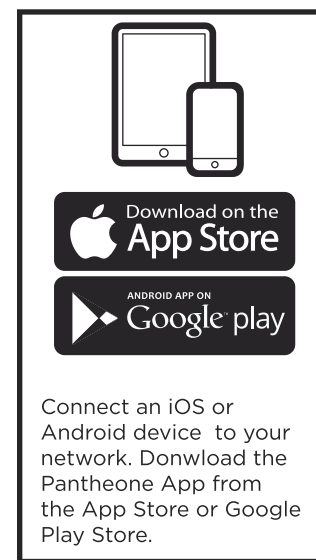
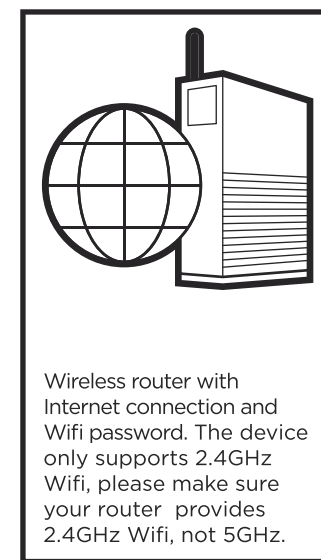
- LAN socket**
- Power switch**
- Auxiliary 3.5mm minijack input**
- AC input**



1

Setup preparation

Connections



2

Using the application

Find your Pantheone



- Launch the application and follow the instructions.**
- The Pantheone application is available on App Store and Google Play store.

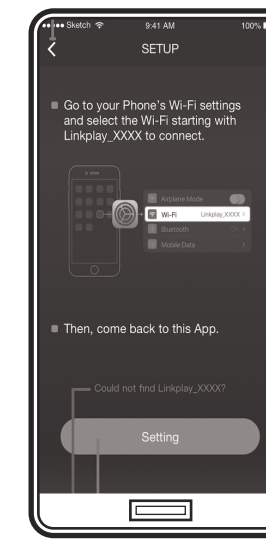


- Search for speaker around**
- On first use your speaker is not yet visible
 - Select «Add device»
 - When opening the app, the configuration tool will be activated to find the WIFI network «Pantheone».
 - Wait several seconds for the speaker to connect.

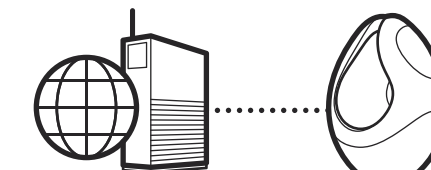
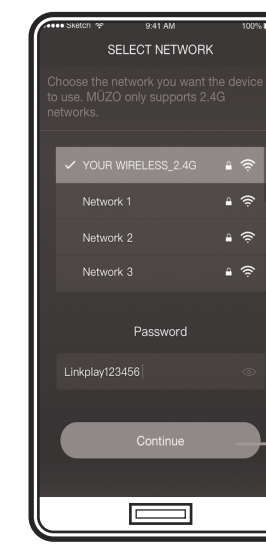
3

Using the application

Find your Pantheone



- Find your Wi-Fi device.**
- Exit the Pantheone application.
 - Open Settings on your device.
 - Under WiFi settings connect to the speaker.

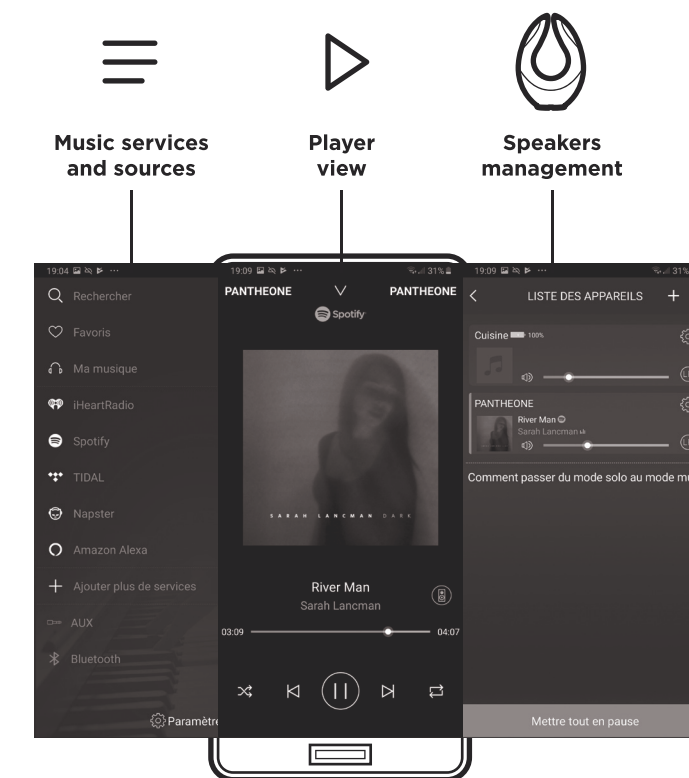


- Connect to your Wi-Fi device.**
- Once connected to the Pantheone WiFi, return to the application.
 - Select your Wifi network and input the password.

4

Using the application

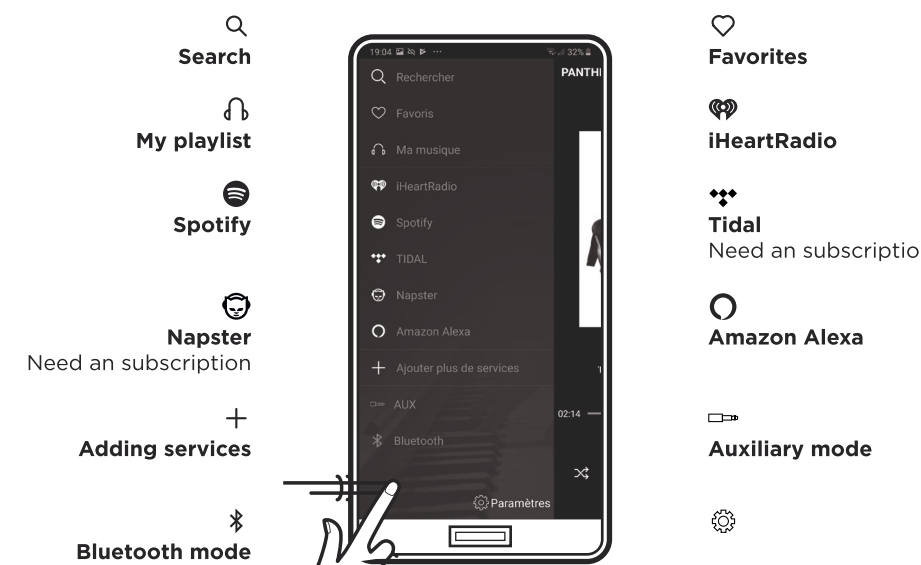
Let's play



5

Using the application

Left panel : source selection



Speakers management



6

FCC Warning Statement

Changes or modifications not expressly approved by the party responsible for compliance could void the user's authority to operate the equipment. This equipment has been tested and found to comply with the limits for a Class B digital device, pursuant to Part 15 of the FCC Rules. These limits are designed to provide reasonable protection against harmful interference in a residential installation. This equipment generates uses and can radiate radio frequency energy and, if not installed and used in accordance with the instructions, may cause harmful interference to radio communications. However, there is no guarantee that interference will not occur in a particular installation. If this equipment does cause harmful interference to radio or television reception, which can be determined by turning the equipment off and on, the user is encouraged to try to correct the interference by one or more of the following measures:

- Reorient or relocate the receiving antenna.
- Increase the separation between the equipment and receiver.
- Connect the equipment into an outlet on a circuit different from that to which the receiver is connected.
- Consult the dealer or an experienced radio/TV technician for help.

FCC Radiation Exposure Statement

The antennas used for this transmitter must be installed to provide a separation distance of at least 20 cm from all persons and must not be co-located for operating in conjunction with any other antenna or transmitter.

Warning

Changes of modifications to this unit not expressly approved by the party responsible for compliance could void the user's authority to operate the equipment.