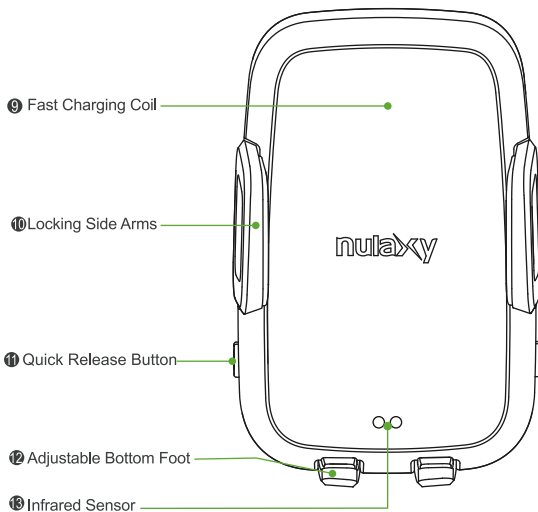
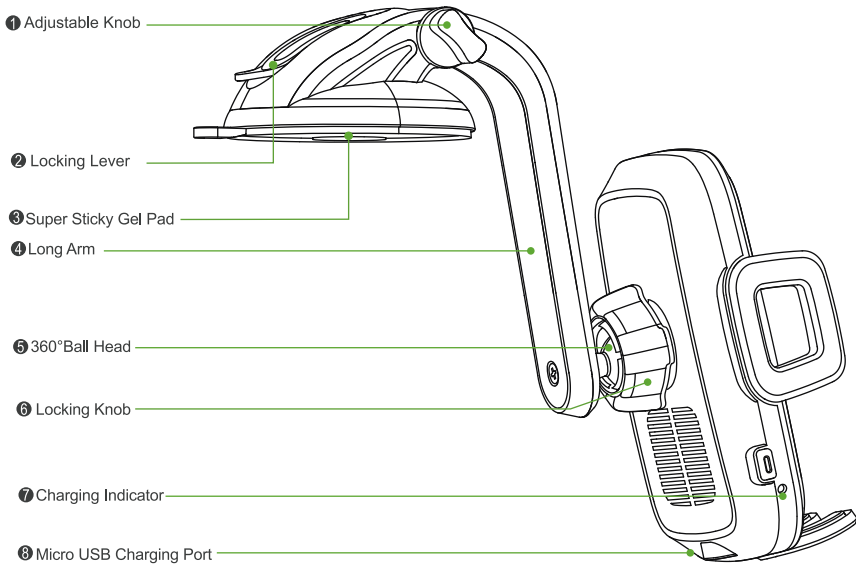




Wireless Car Charger

English



Before you start:

1. It is important to note that although wireless chargers are a transformatively convenient charging device, they are not yet capable of the charging speeds provided by traditional wired chargers.
2. **Before using product, make sure that your device is Qi Wireless compatible. Please note that not all smartphones can receive a wireless Fast Charge, however they will still receive a standard wireless charge. Please check your phone's charging features whether support Fast Charge capabilities.**
3. During the charging process, the transfer of electricity gives off heat. Your device may feel hotter to the touch. This does not affect your device's lifespan or performance and is in the device's normal range of operation.
4. **For fast charging mode (10W, 7.5W), please use a certified Qualcomm QUICK CHARGE 3.0 car charger or equivalent adapter to receive Fast Charge (with compatible devices).**
5. **For standard 5W charging mode, please use with car chargers, power strips with an output of 5V/2A or above. Not compatible with the iPhone stock charger (5V/1A). Inserting into laptop or computer will not provide adequate power.**
6. To avoid the possibility of marks or harms to select dashboards, we recommend you to place the mount onto your car air vent.
7. High temperature (over 70°C) may affect the stickiness of the suction cup, the car mount may falling off, which is a normal phenomenon. Please rinse the suction cup with warm water and let air dry, restoring the gel pad to like new condition, once the temperature drops, then reinstall it to the car dashboard. To avoid this problem, we strongly recommend to use it onto car air vent in summer.

Troubleshooting

If you're experiencing interrupted or slow charging, check the followings:

1. The back of your phone should not have any metal, pop sockets, or credit cards.
2. Put the phone in the center of the charging surface (this lets the charging coil in your phone line up with the one inside the wireless charger).
3. The wireless charging coil on Sony phones is located slightly below center.
4. Phone cases should be no thicker than 5 mm for effective charging.
5. **Choose the correct adapter for your wireless charger:**
 - **Quick Charge or Power Delivery adapter for Fast Charge Modes.**
 - **5V/2A adapter for Standard Charge Mode.**
 - **Not compatible with 5V/1A adapters.**
6. For Pixel 3 / Pixel 3XL (The phone's screen will display the message: Charging slowly.)

If you use the wireless charger with an appropriate car charger and have removed any potential charging obstructions, but the issues still remain, then please try these steps:

- ① Replacing the cable that connects your car charger to the wireless charger.
- ② Rebooting your phone.

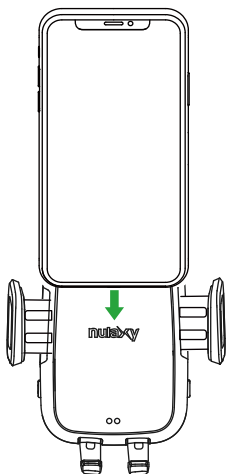
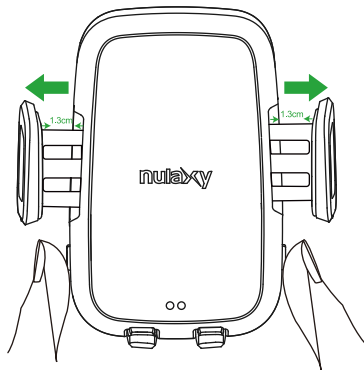
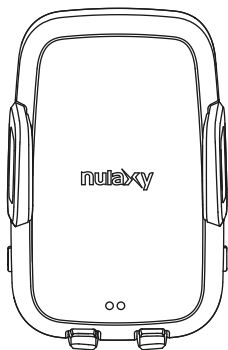
If your problem has not been solved by the above steps, please reach out to us via support@nulaxy.com

To expedite resolving your case, please provide us with the following information: your phone's model, the type of car charger you are using, and the type of phone case you are using (with a link if possible). Optionally, you can send a helpful video to show the problem you are experiencing.

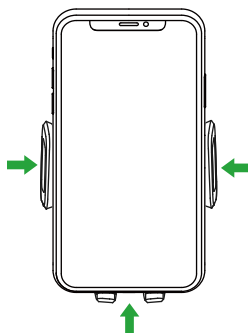
Key Features

Automatically Clamping & Opening

Press release buttons on either side, the arms will be open, after placing phone, it will automatically clamping.



Placing the phone



Automatically clamping

Qi Wireless Charging & Setting Bottom Foot

Charge up to 40% faster than standard wireless charging, the bottom foot is adjustable to keep larger smartphone compatibility.

Charging Indicator

- a. When powered on, a purple light will appear, and then fade to go to standby status.
- b. A solid green light will appear when smartphone is properly charging.

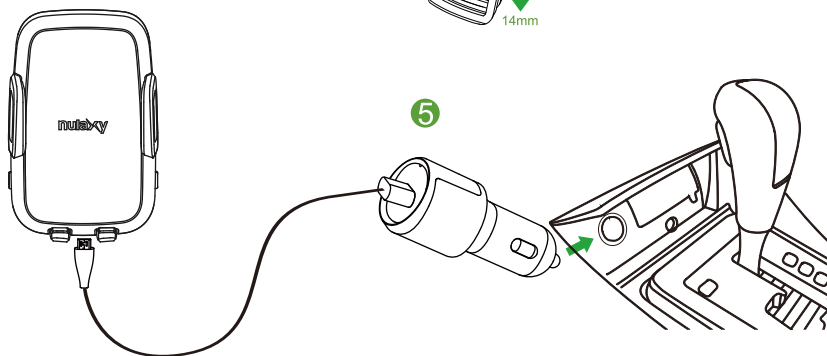
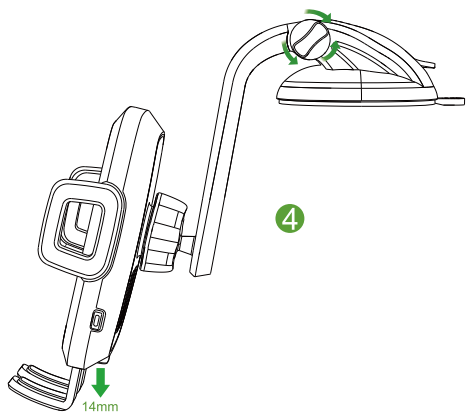
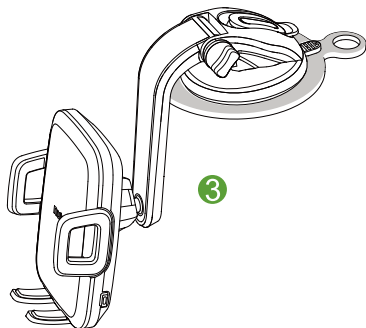
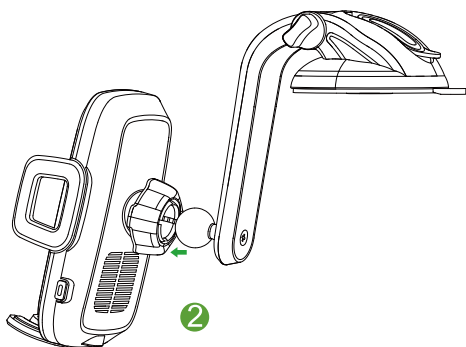
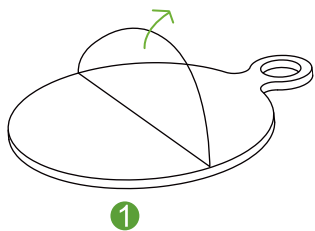
Red Light

Red light will always on once the charger is under standby status A blinking red light shows incompatibility with smartphone, please make sure that the back of your phone does not cover with any metal, pop sockets, or credit cards.

Installation Instruction

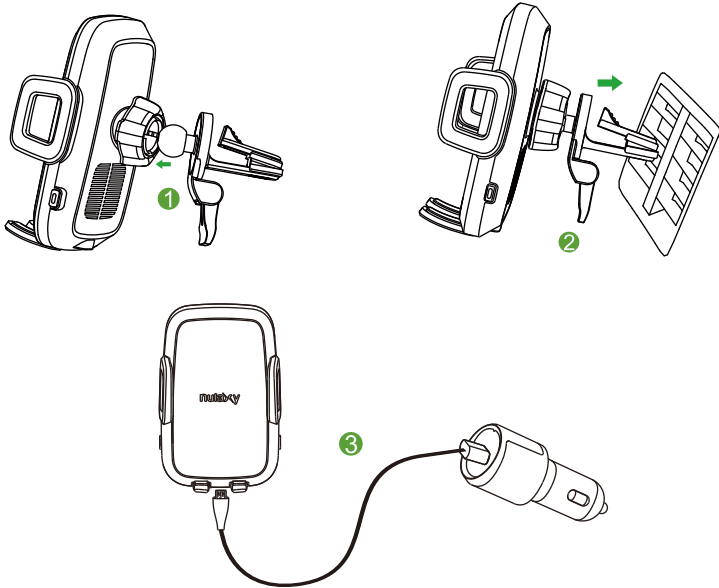
Install to dashboard

1. Unpeel dashboard pad cover and place sticky side on desired dashboard location. ***Dashboard pad for dashboard use only (Nulaxy recommends to use included dashboard pad for all dashboard mounting, which will help mounting on curved and textured surfaces as well as prevent any potential dashboard damage.)**
2. Unscrew the rocking knob, insert the ball into the slot, and tighten the the locking knob.
3. Unpeel sticky gel pad cover, place onto dashboard cover and press down the locking lever to secure the mount into place. Loosen the locking knob to adjust the location you want.
4. Tighten the knob to fasten the device in place, then adjust the bottom foot to fit your phone
5. Plug micro USB cable into the charging port, connect USB cable to Car Charger (not included).
6. You are ready to place your phone and enjoying wireless Qi charging.



Install to Air Vent

1. Unscrew the rocking knob, insert air vent mount into the slot, tighten the the locking knob.
2. Mount it to your air vent, adjust the clip to tight it securely on air vent.
3. Plug micro USB cable into the charging port, connect USB cable to car charger (not included).
4. You are ready to place your phone in and enjoying wireless Qi charging.



Package Contents

- 1 * Nulaxy Wireless Charger Car Mount
- 2 * Air Vent Mount
- 3 * Dashboard Mount
- 4 * Dashboard Pad
- 5 * User Manual

Note: No Car Charger Included

FCC Warning

This device complies with part 15 of the FCC Rules. Operation is subject to the following two conditions: (1) This device may not cause harmful interference, and (2) this device must accept any interference received, including interference that may cause undesired operation. Any Changes or modifications not expressly approved by the party responsible for compliance could void the user's authority to operate the equipment. This equipment has been tested and found to comply with the limits for a Class B digital device, pursuant to part 15 of the FCC Rules. These limits are designed to provide reasonable protection against harmful interference in a residential installation. This equipment generates uses and can radiate radio frequency energy and, if not installed and used in accordance with the instructions, may cause harmful interference to radio communications. However, there is no guarantee that interference will not occur in a particular installation. If this equipment does cause harmful interference to radio or television reception, which can be determined by turning the equipment off and on, the user is encouraged to try to correct the interference by one or more of the following measures:

- Reorient or relocate the receiving antenna.
 - Increase the separation between the equipment and receiver.
 - Connect the equipment into an outlet on a circuit different from that to which the receiver is connected.
 - Consult the dealer or an experienced radio/TV technician for help.
- FCC Radiation Exposure Statement**
This equipment complies with FCC radiation exposure limits set forth for an uncontrolled environment. This equipment should be installed and operated with a minimum distance of 20 cm between the radiator and your body.