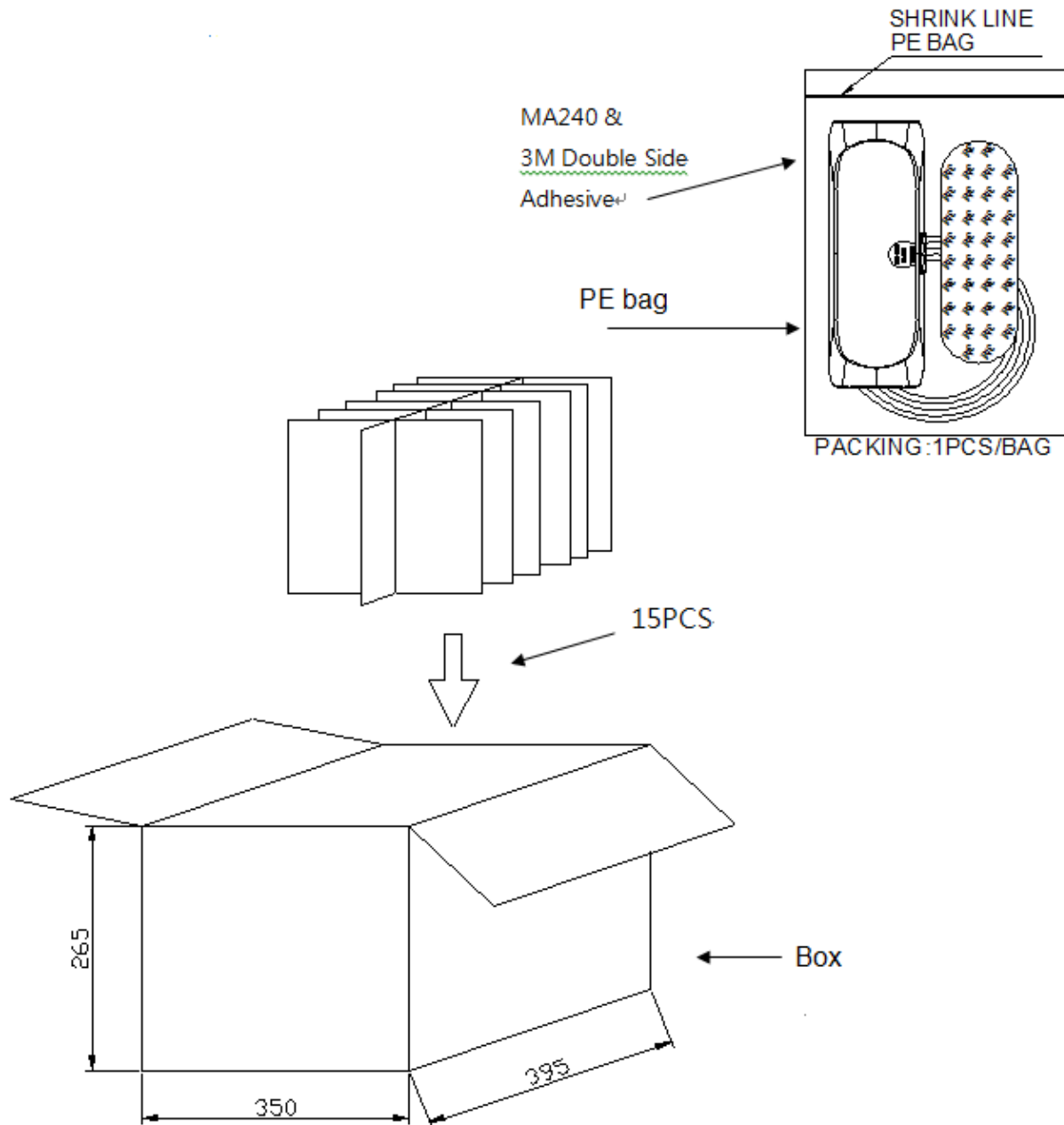


5. Packaging

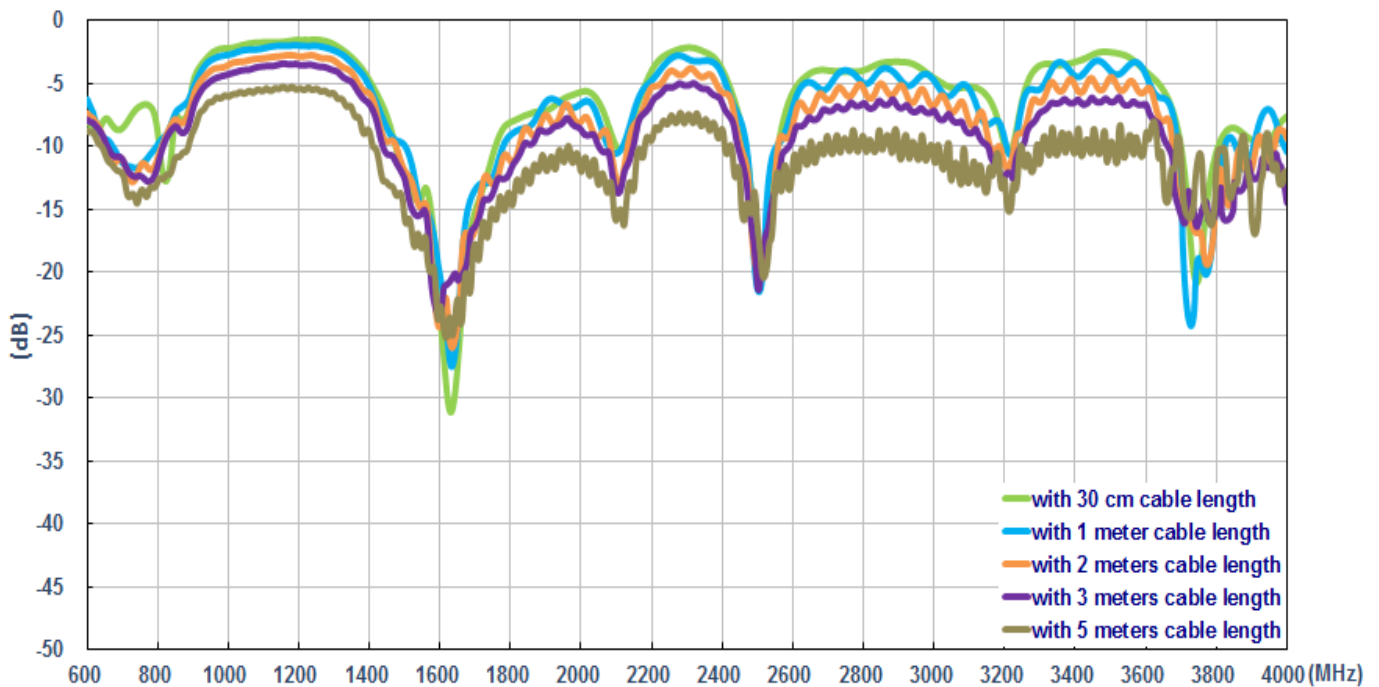


6. Application Note (LTE MIMO Antenna)

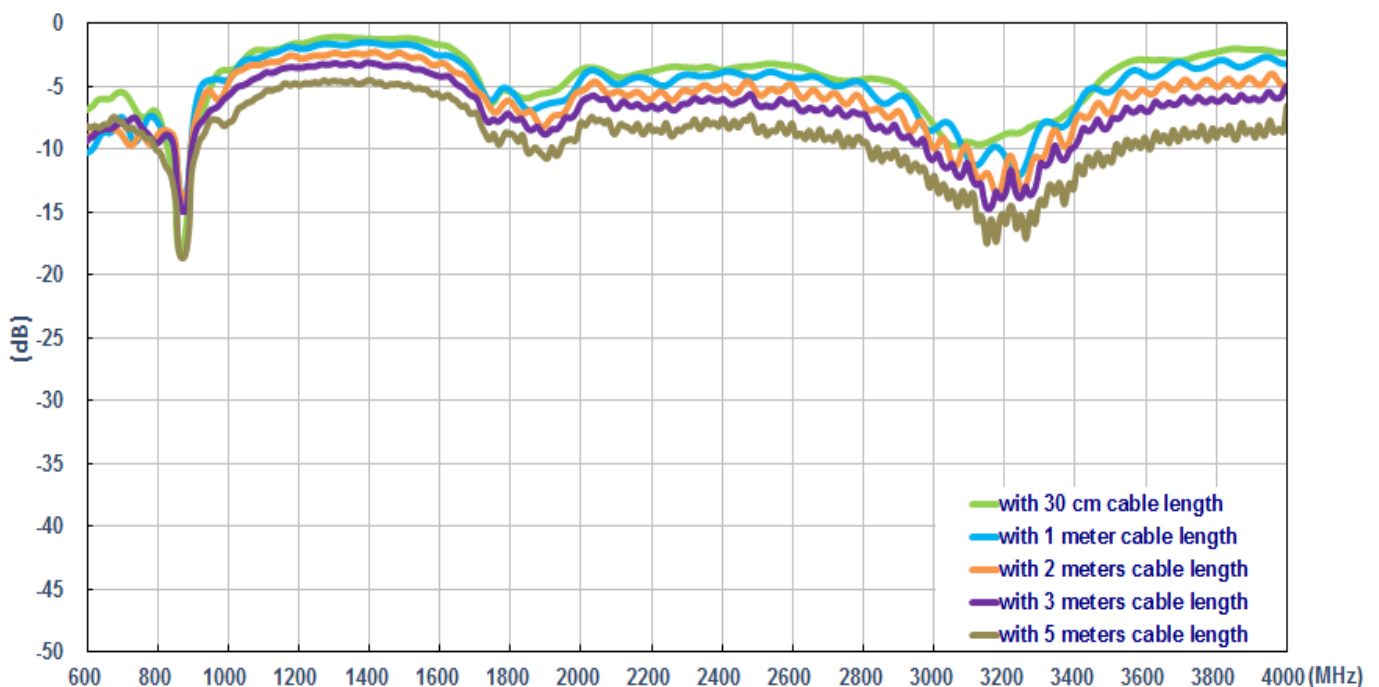
The MA240 antenna measurement with difference cable length and difference environments, the performance is shown as below,

6.1 In free Space

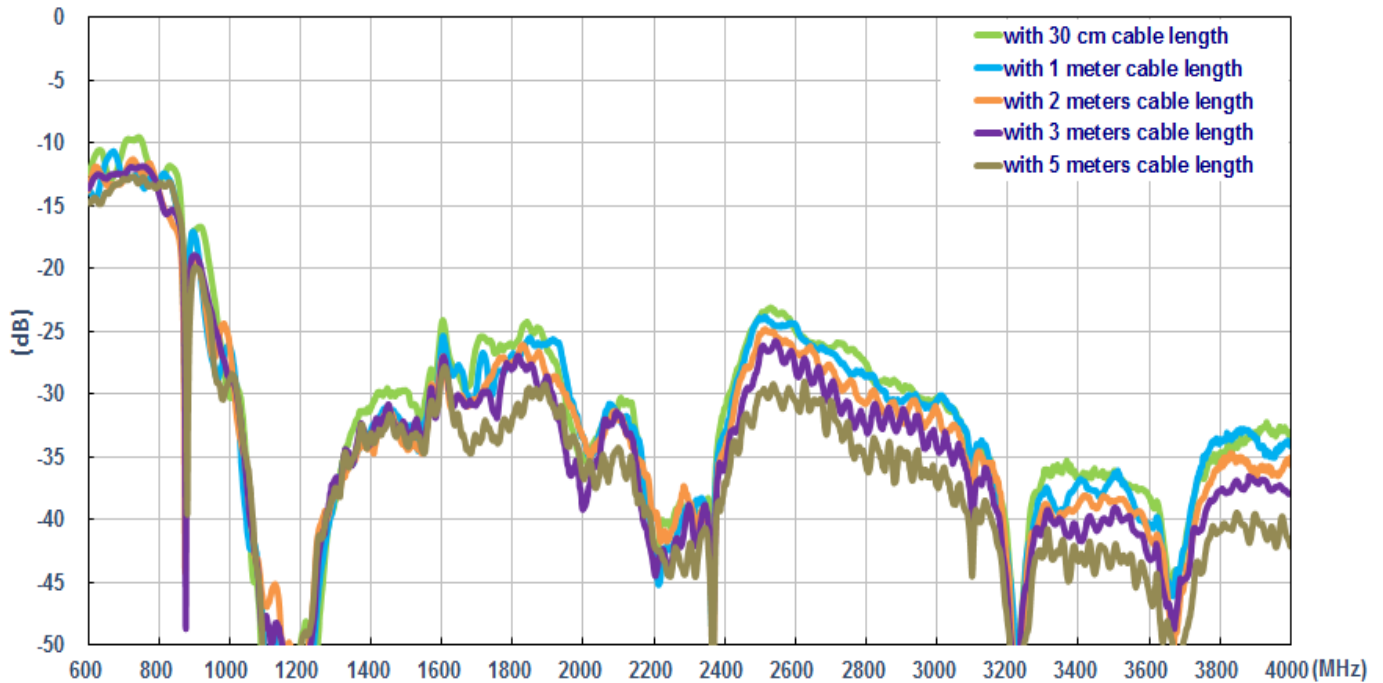
6.1.1 Return loss(MIMO_1 in free space)



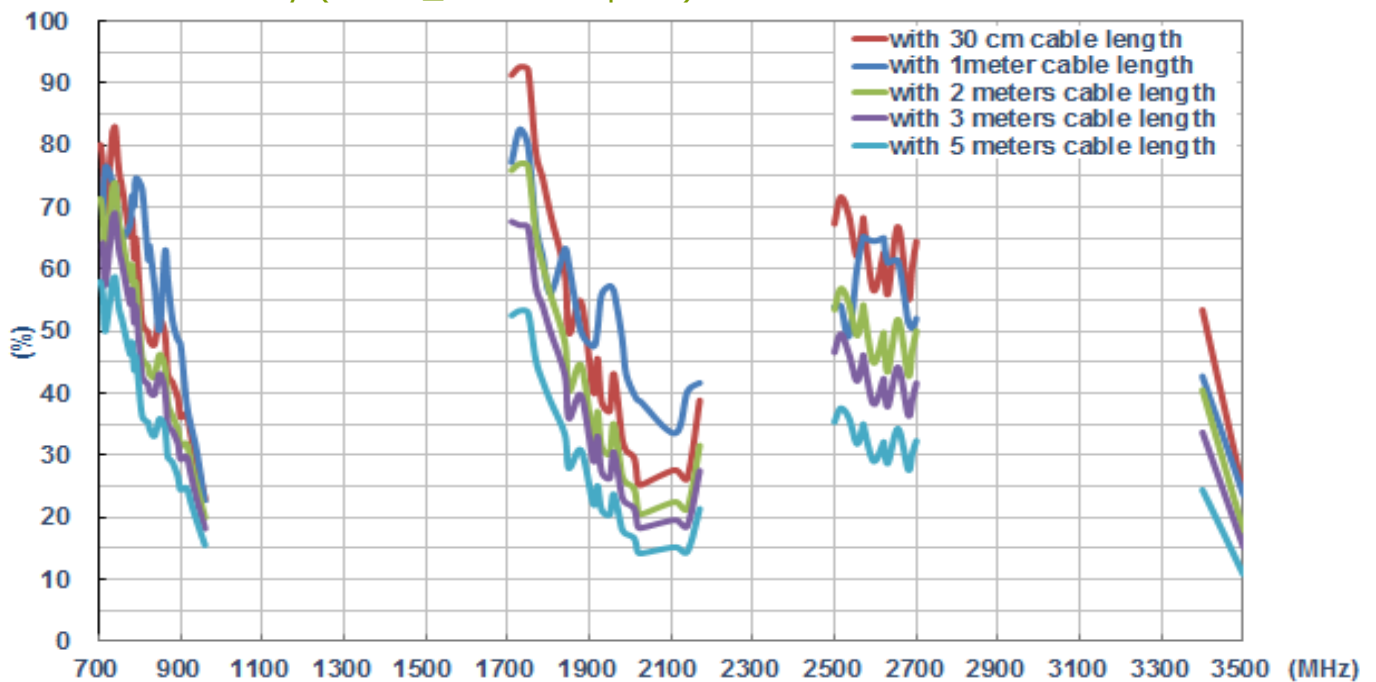
6.1.2 Return loss (MIMO_2 in free space)



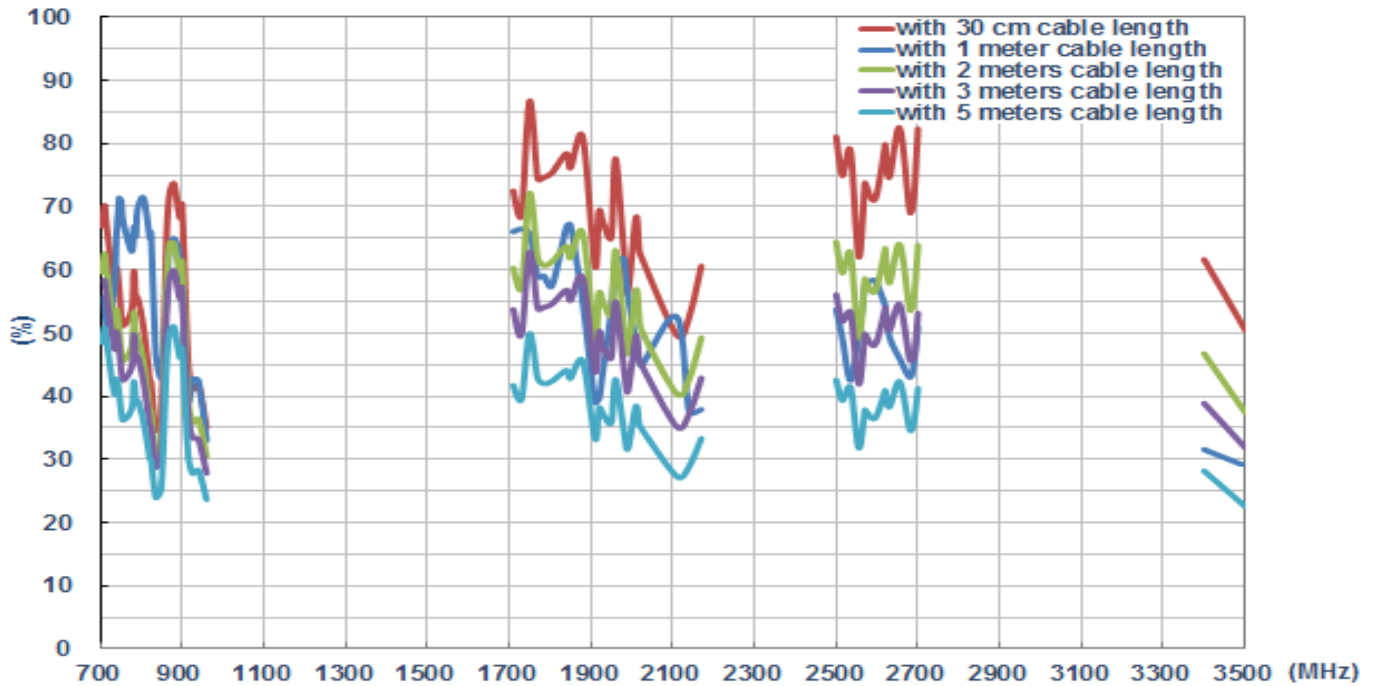
6.1.3 Insertion loss (in free space)



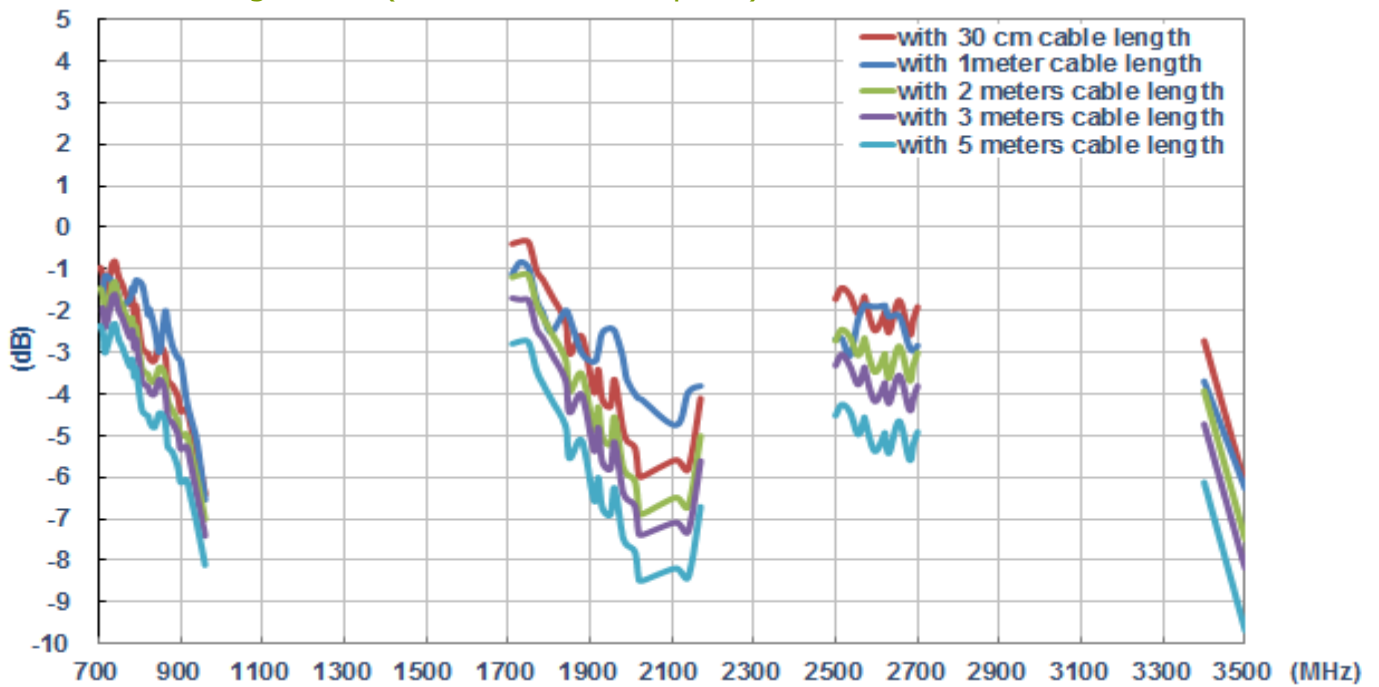
6.1.4 Efficiency (MIMO_1 in free space)



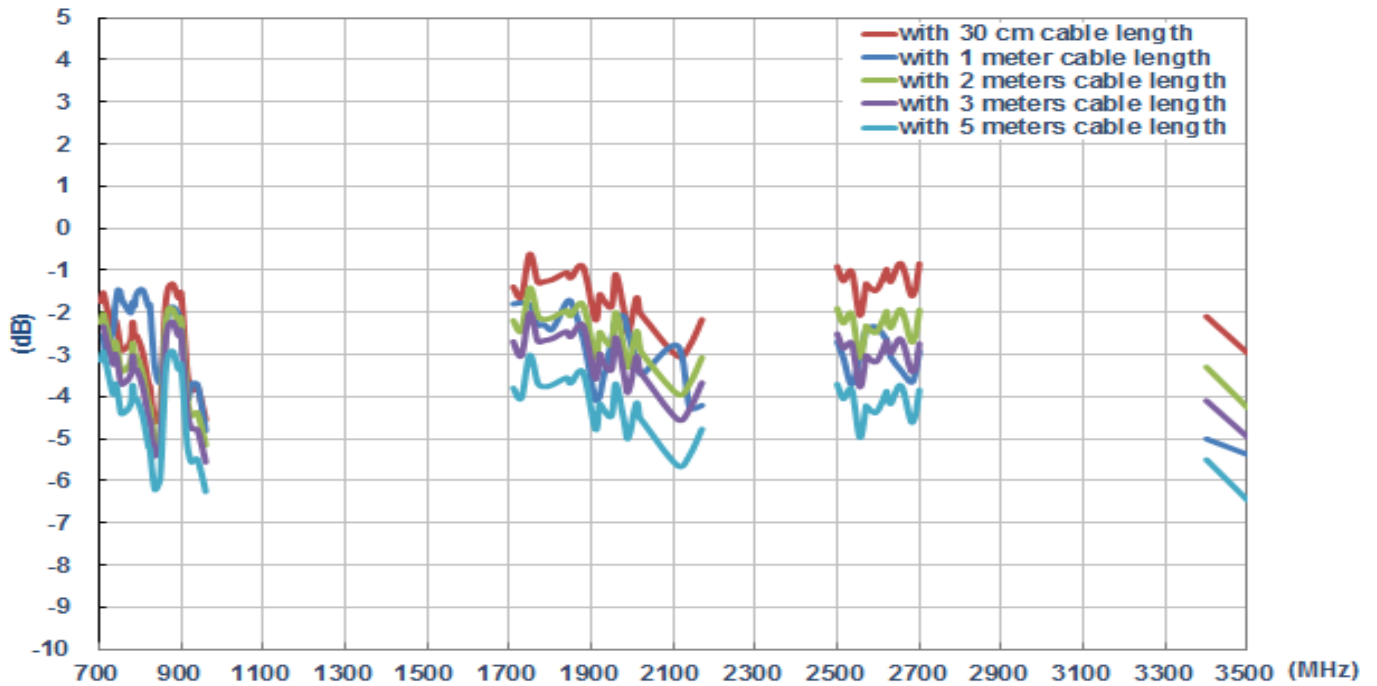
6.1.5 Efficiency (MIMO_2 in free space)



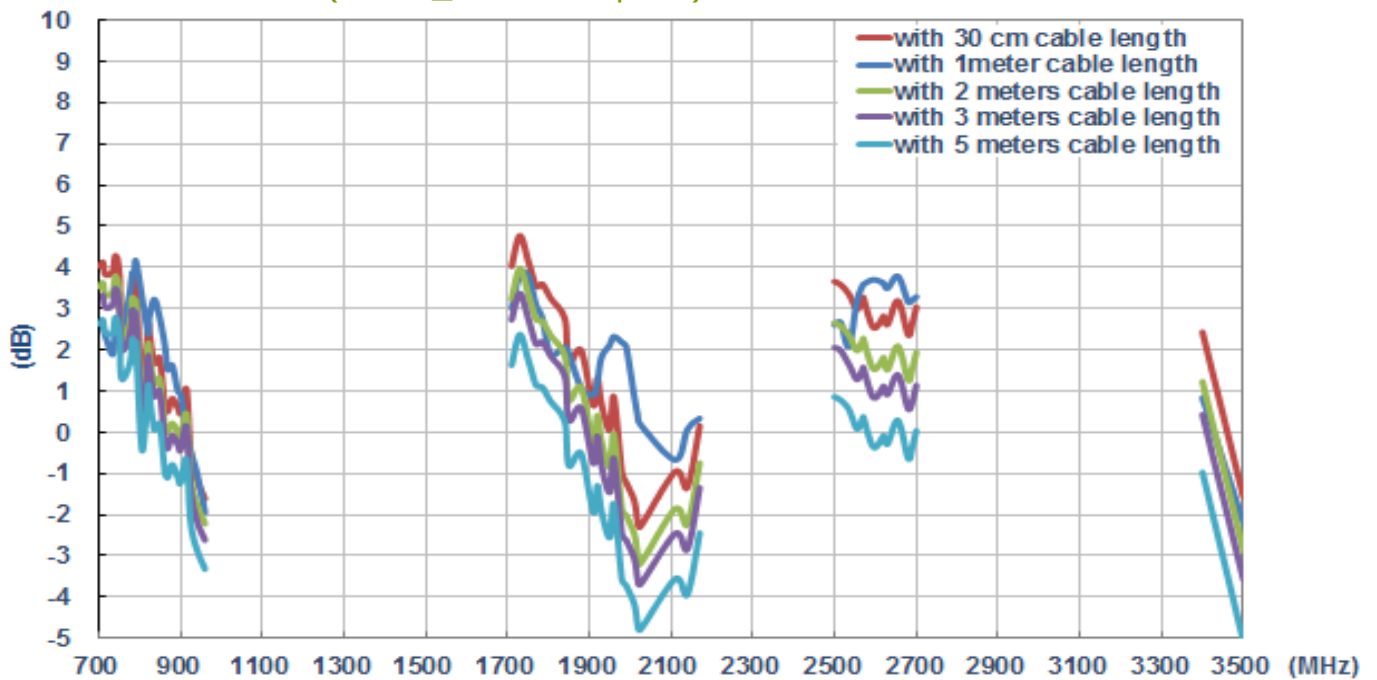
6.1.6 Average Gain (MIMO_1 in free space)



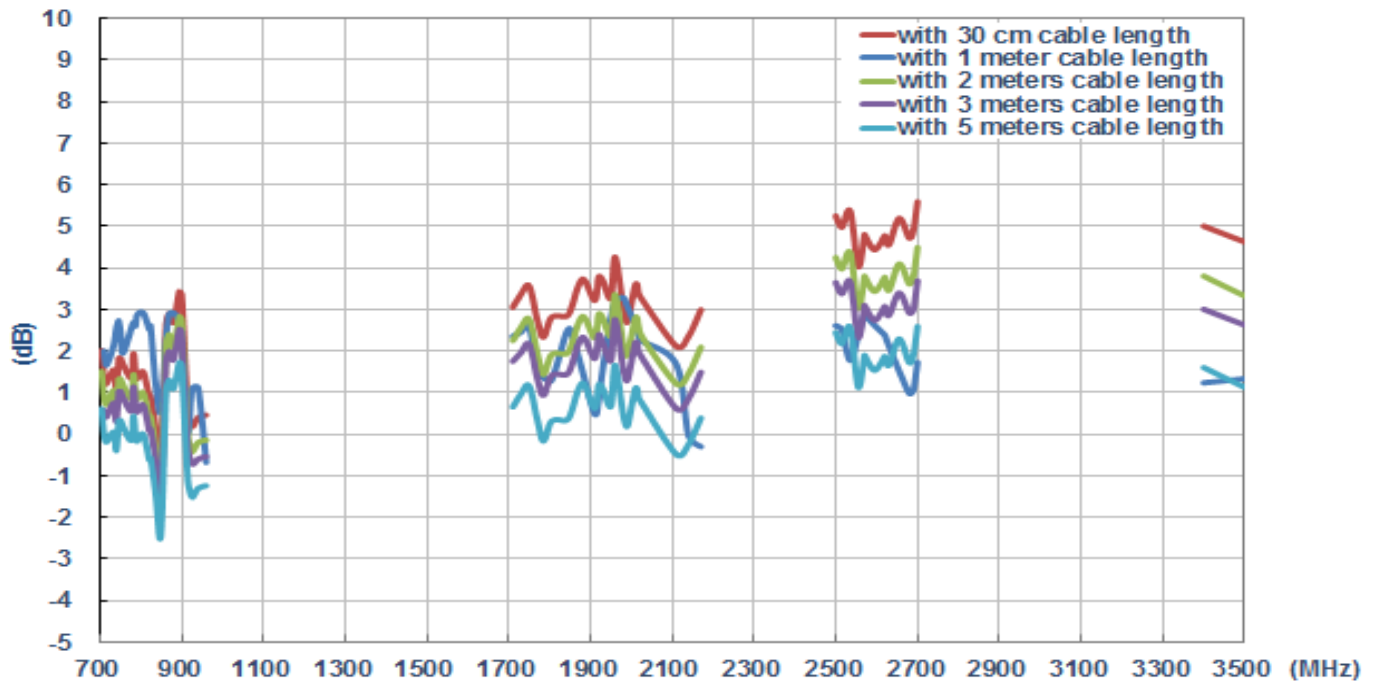
6.1.7 Average Gain (MIMO_2 in free space)



6.1.8 Peak Gain (MIMO_1 in free space)

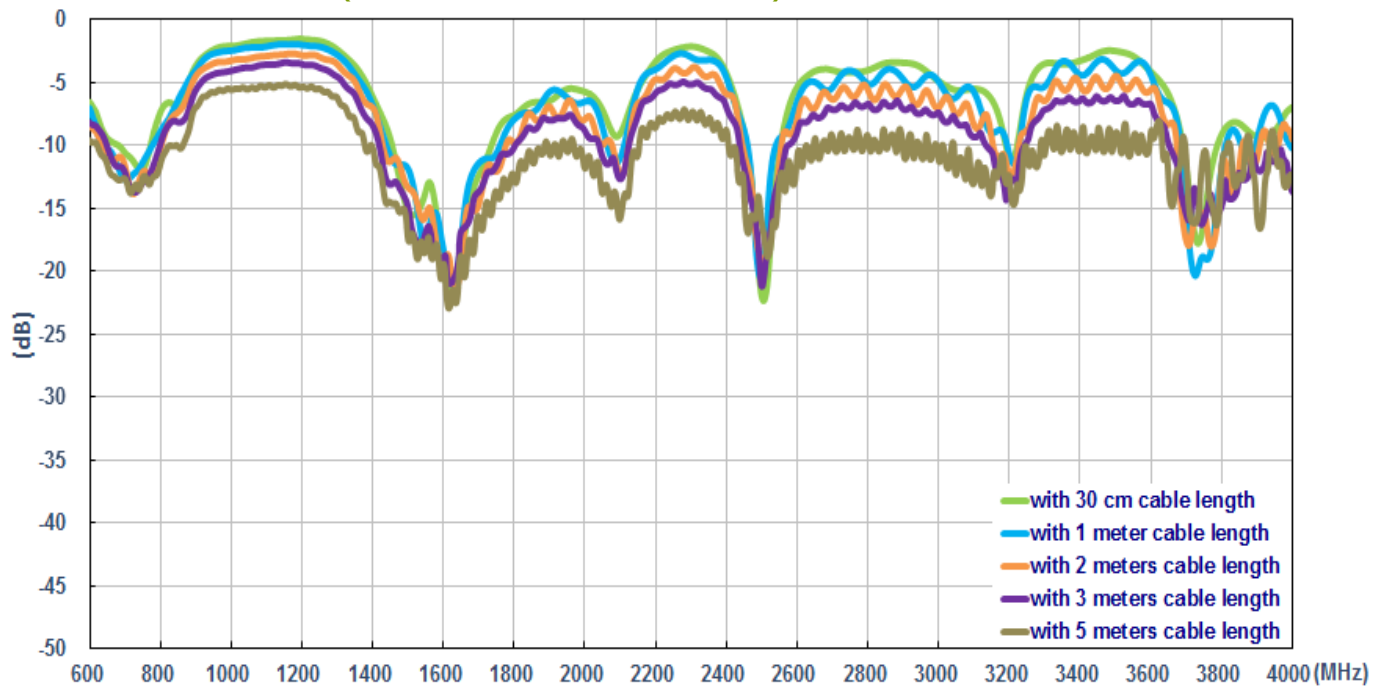


6.1.9 Peak Gain (MIMO_2 in free space)

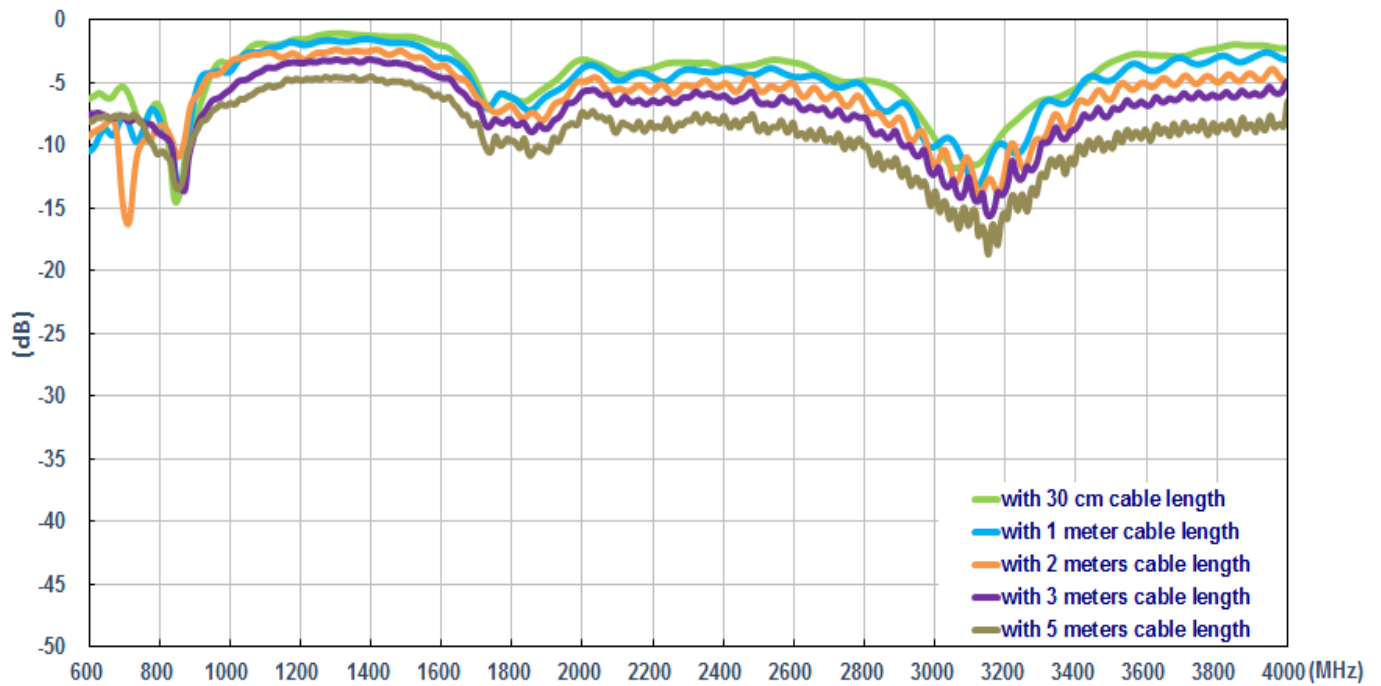


6.2 On 2mm ABS Base

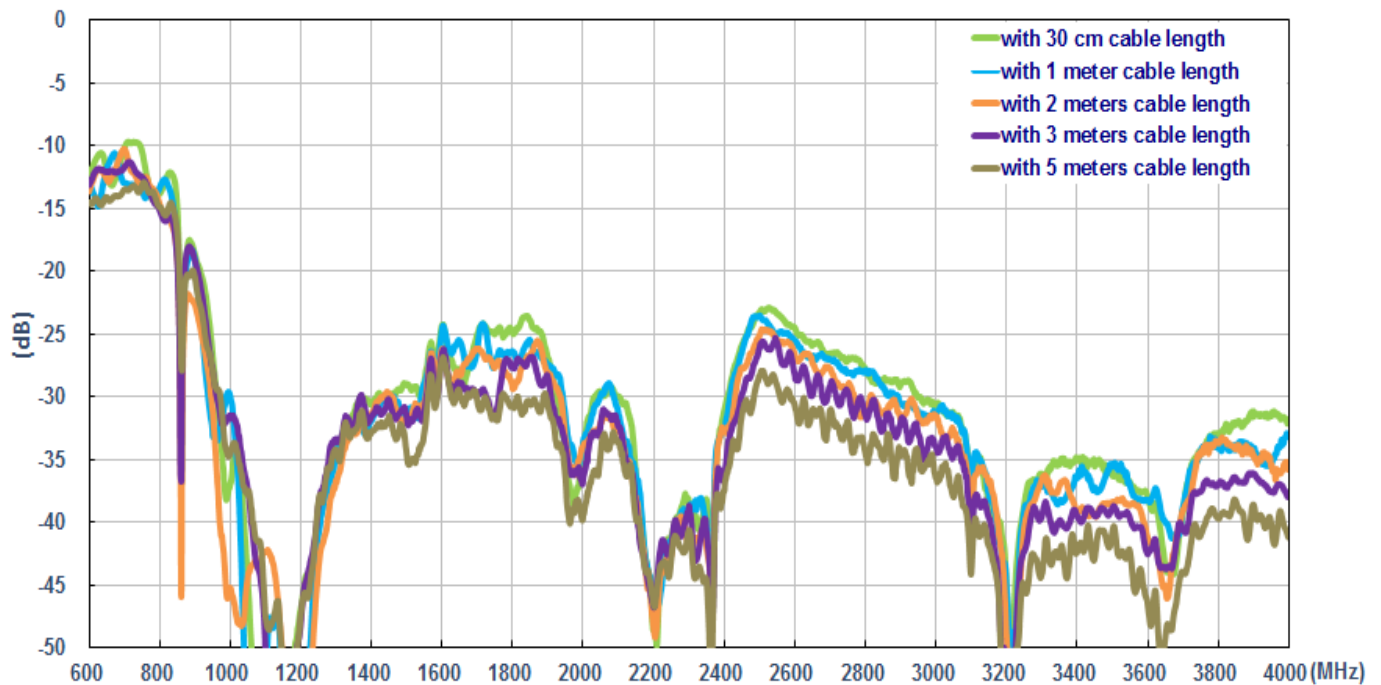
6.2.1 Return loss(MIMO_1 on the 2mm ABS)



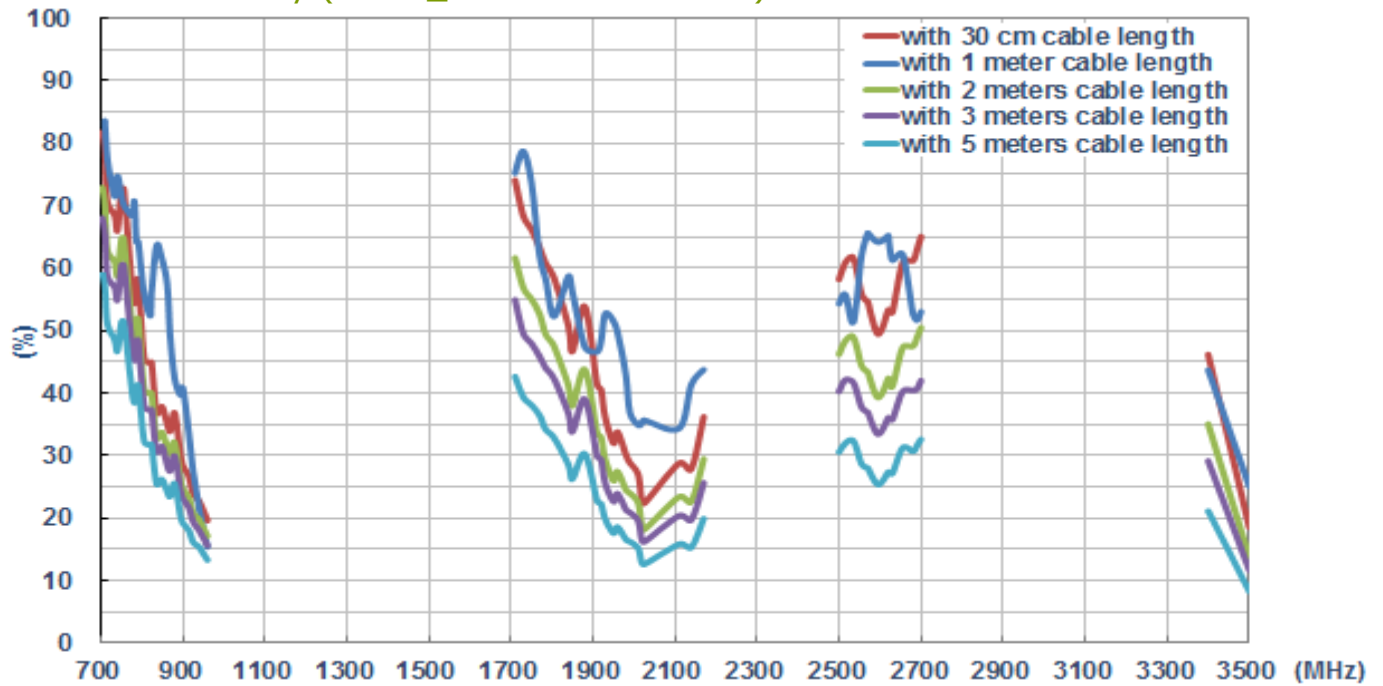
6.2.2 Return loss (MIMO_2 on the 2mm ABS)



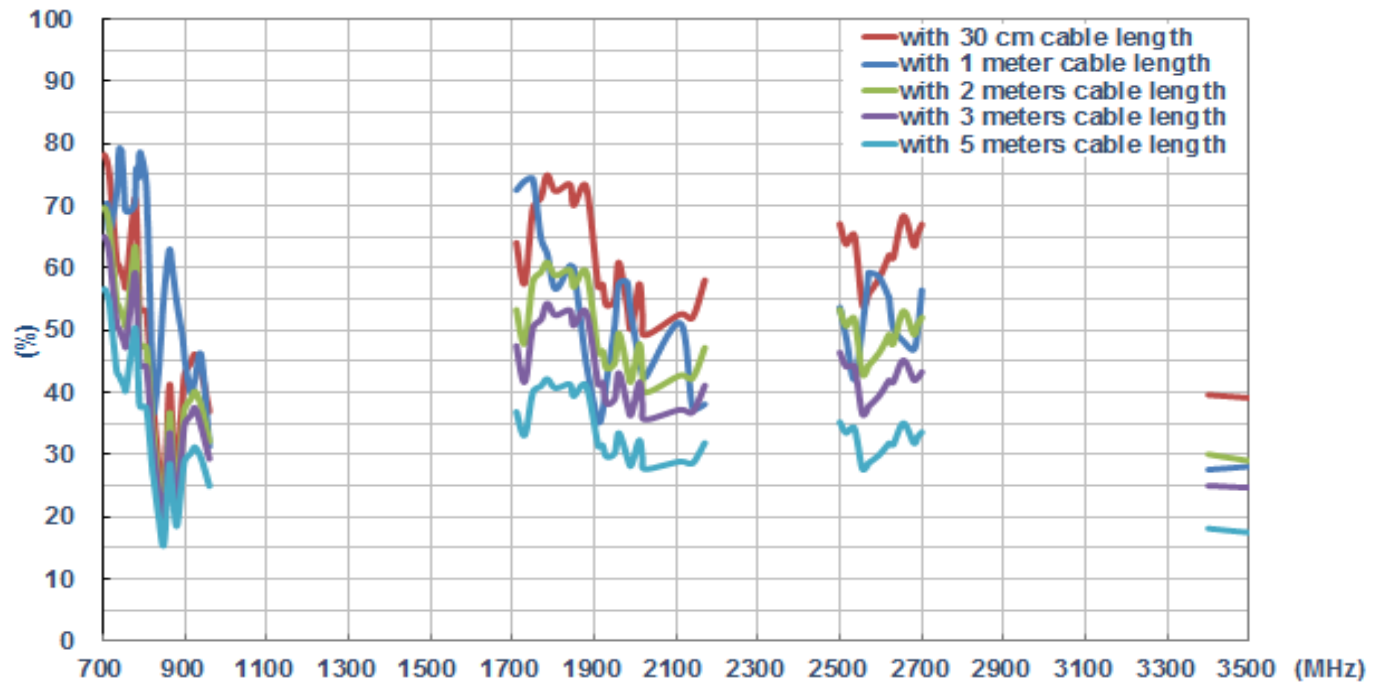
6.2.3 Insertion loss (on the 2mm ABS)



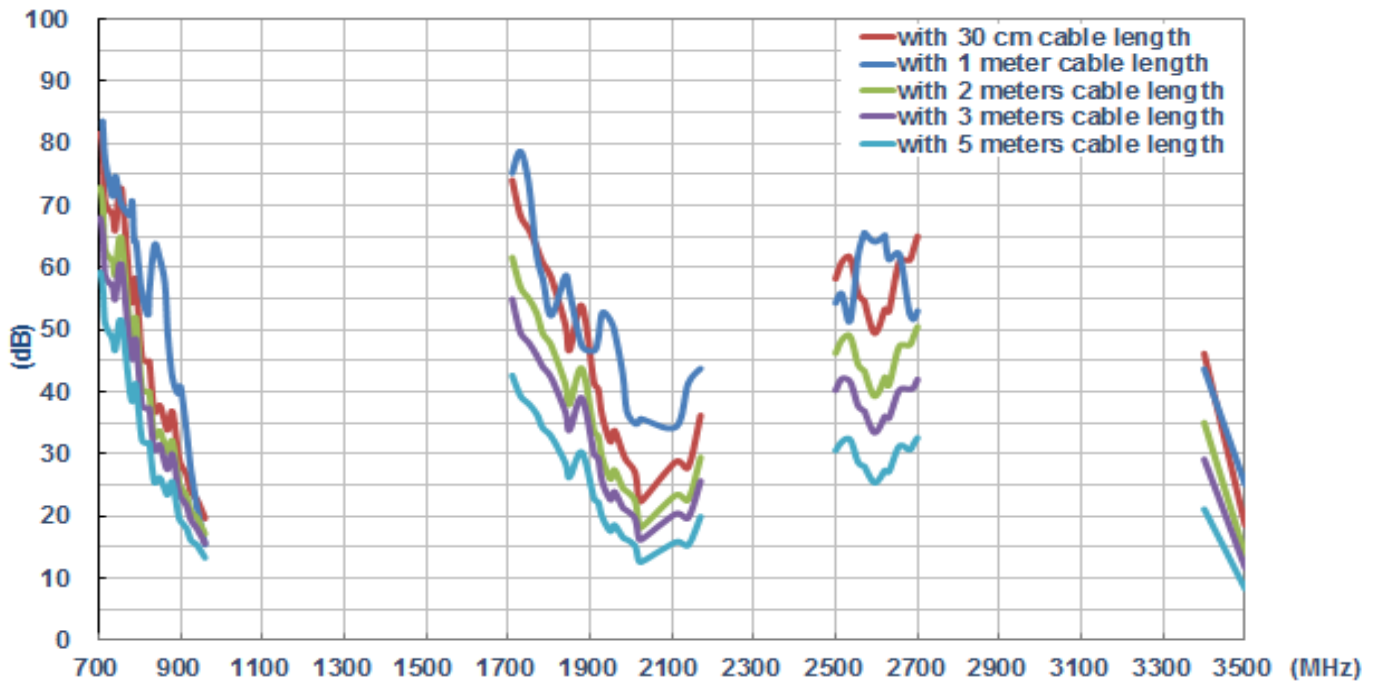
6.2.4 Efficiency (MIMO_1 on the 2mm ABS)



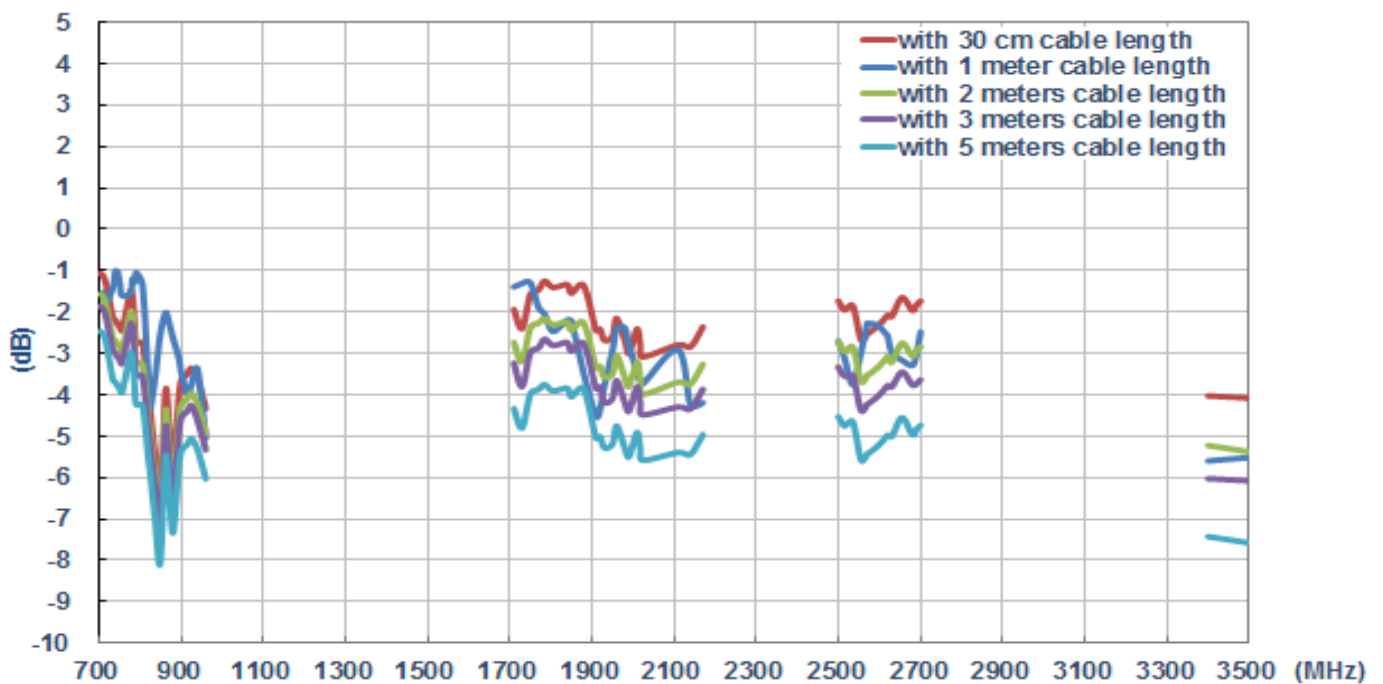
6.2.5 Efficiency (MIMO_2 on the 2mm ABS)



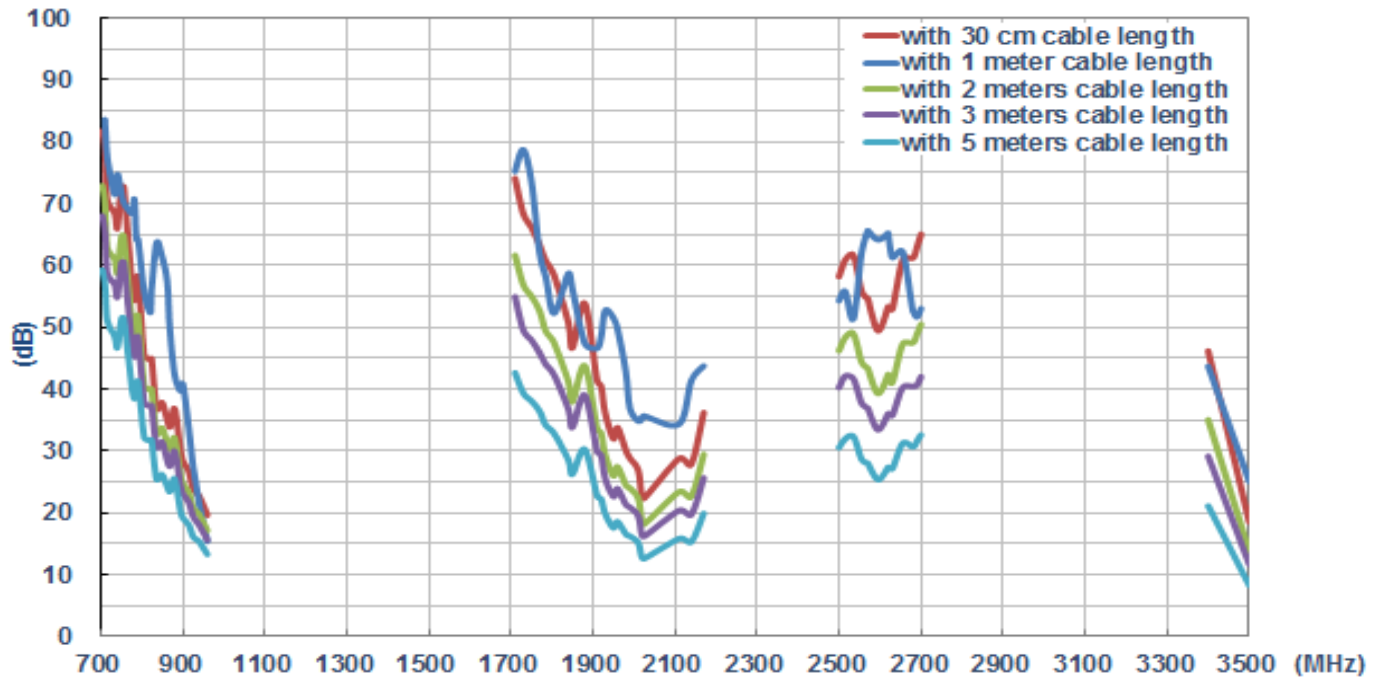
6.2.6 Average Gain (MIMO_ on the 2mm ABS)



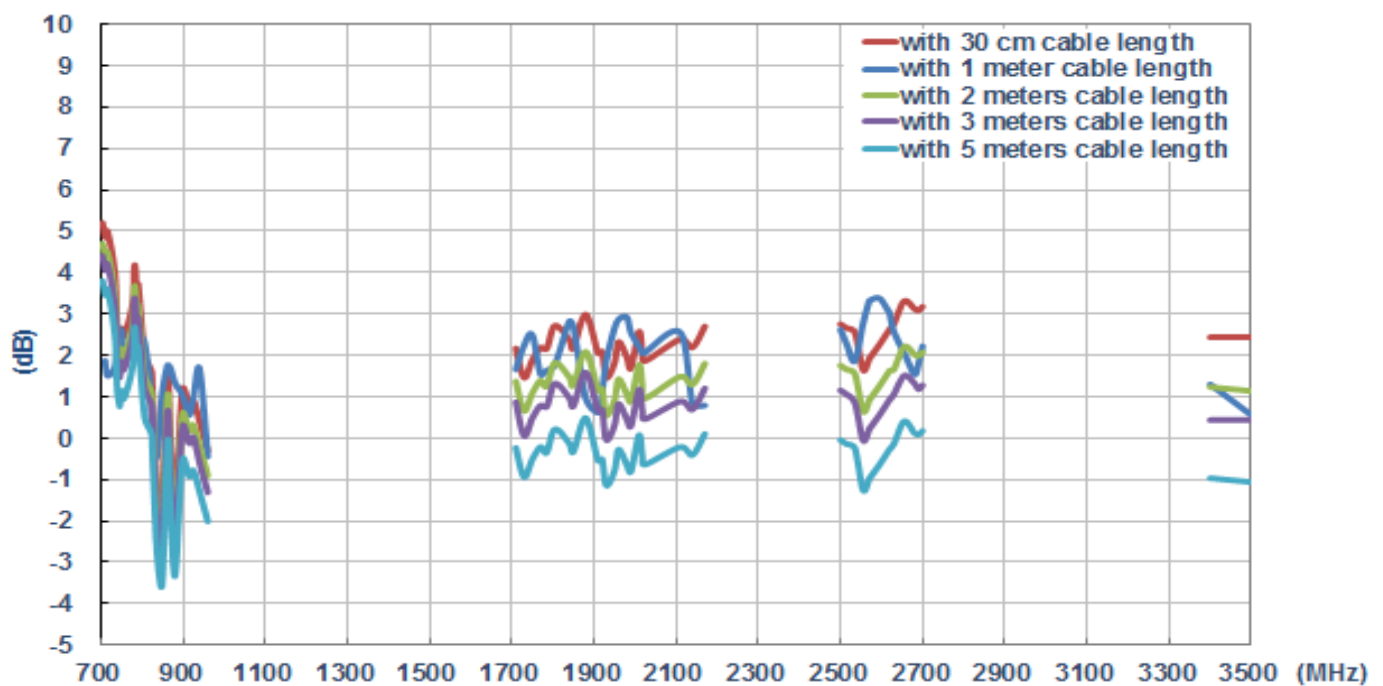
6.2.7 Average Gain (MIMO_2 on the 2mm ABS)



6.2.8 Peak Gain (MIMO_1 on the 2mm ABS)

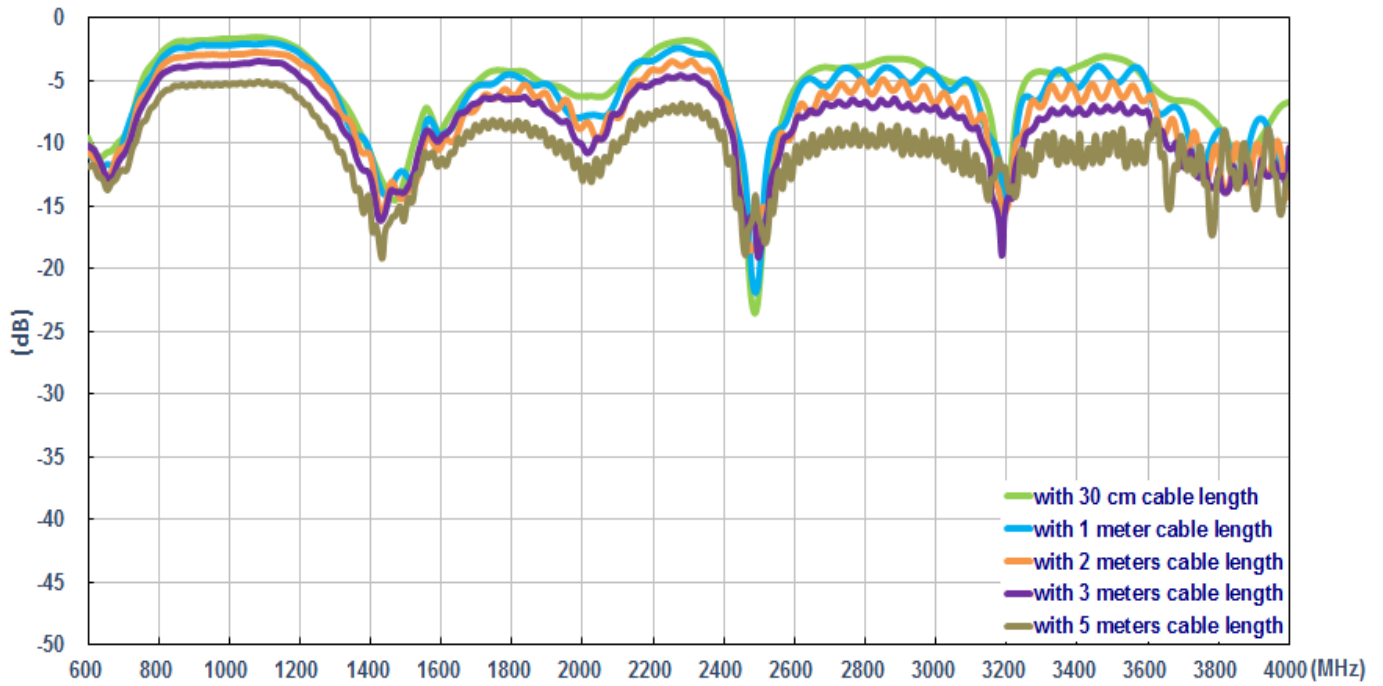


6.2.9 Peak Gain (MIMO_2 on the 2mm ABS)

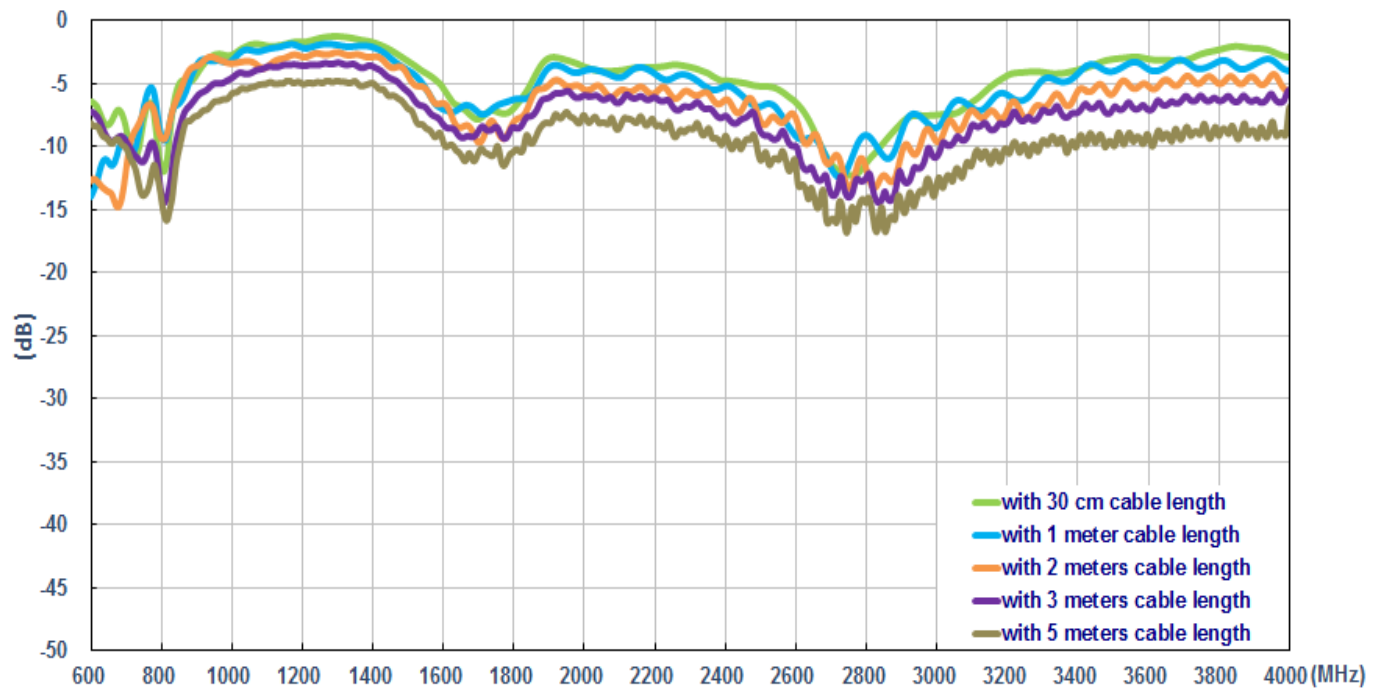


6.3 On the glass base

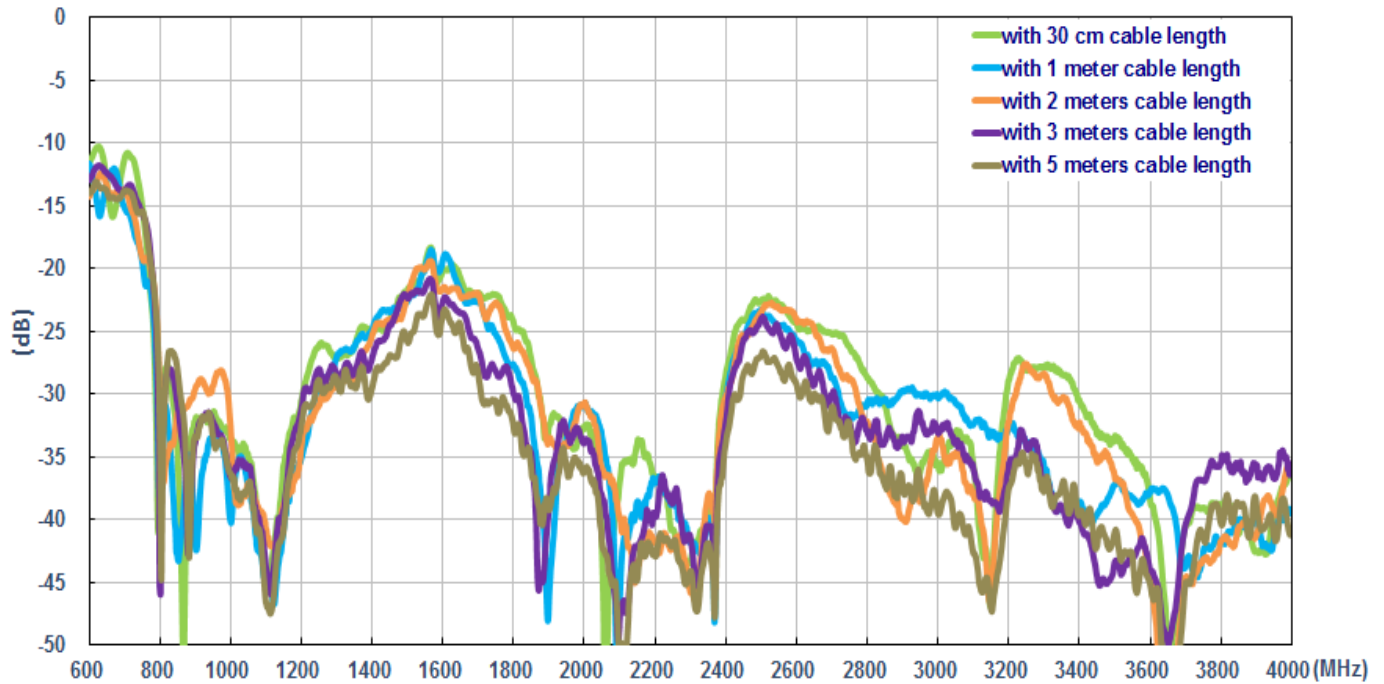
6.3.1 Return loss(MIMO_1 on the glass)



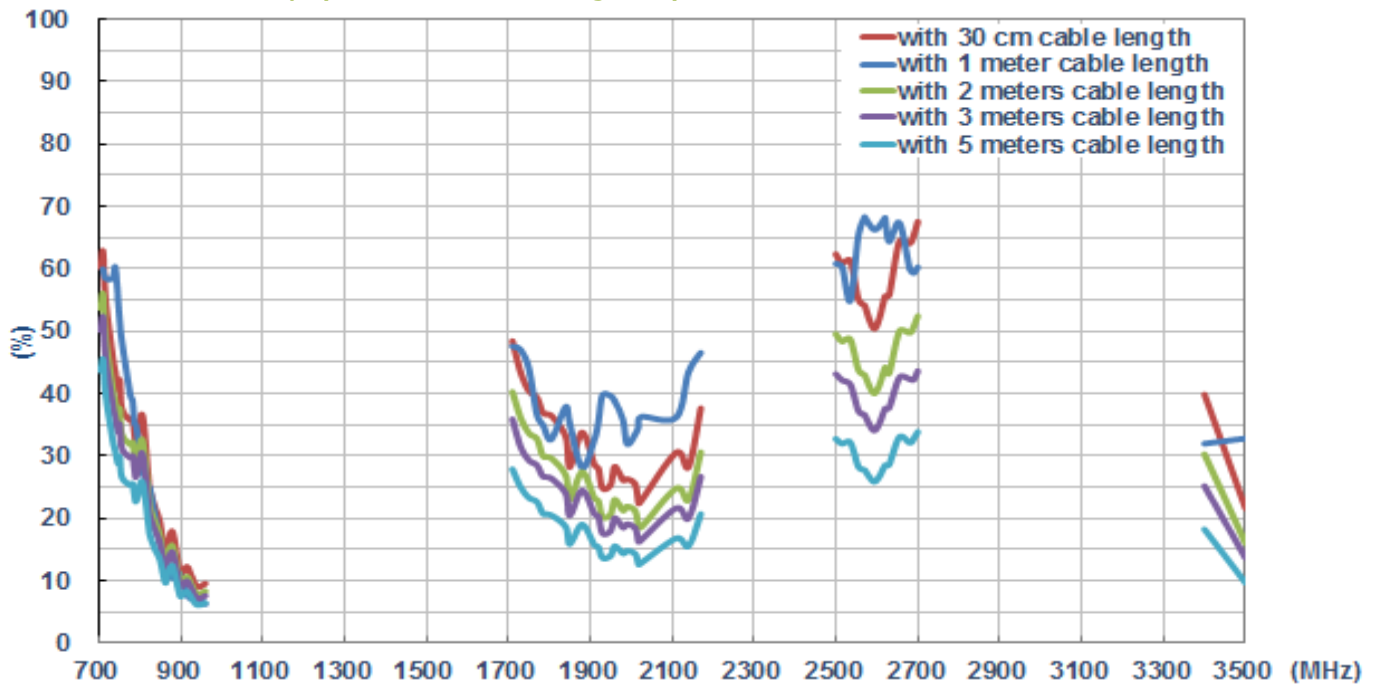
6.3.2 Return loss (MIMO_2 on the glass)



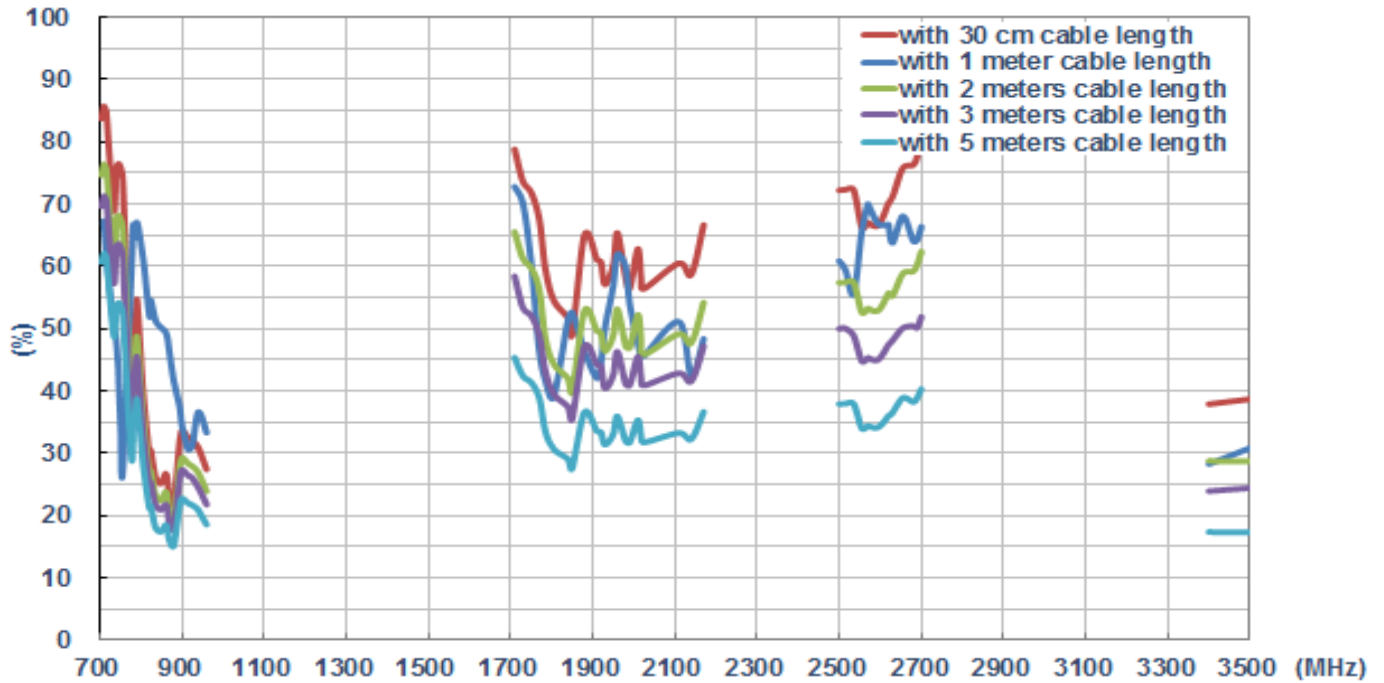
6.3.3 Insertion loss (on the glass)



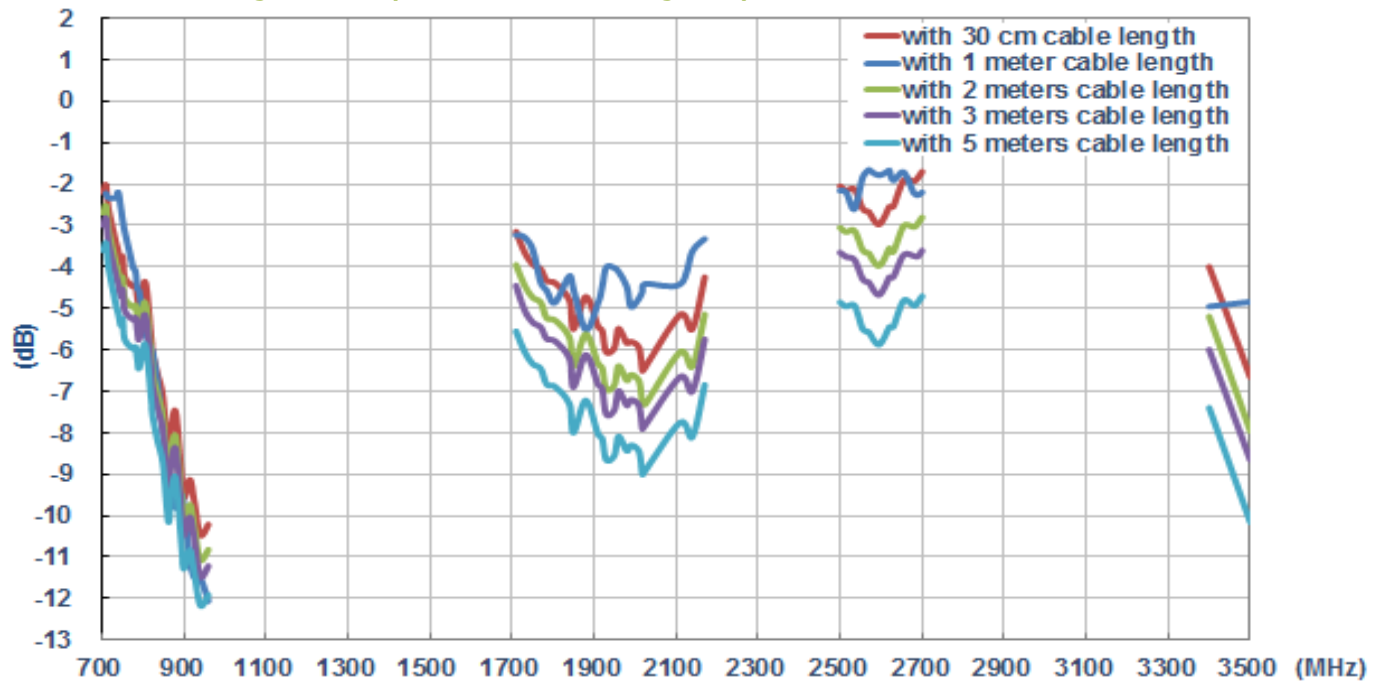
6.3.4 Efficiency (MIMO_1 on the glass)



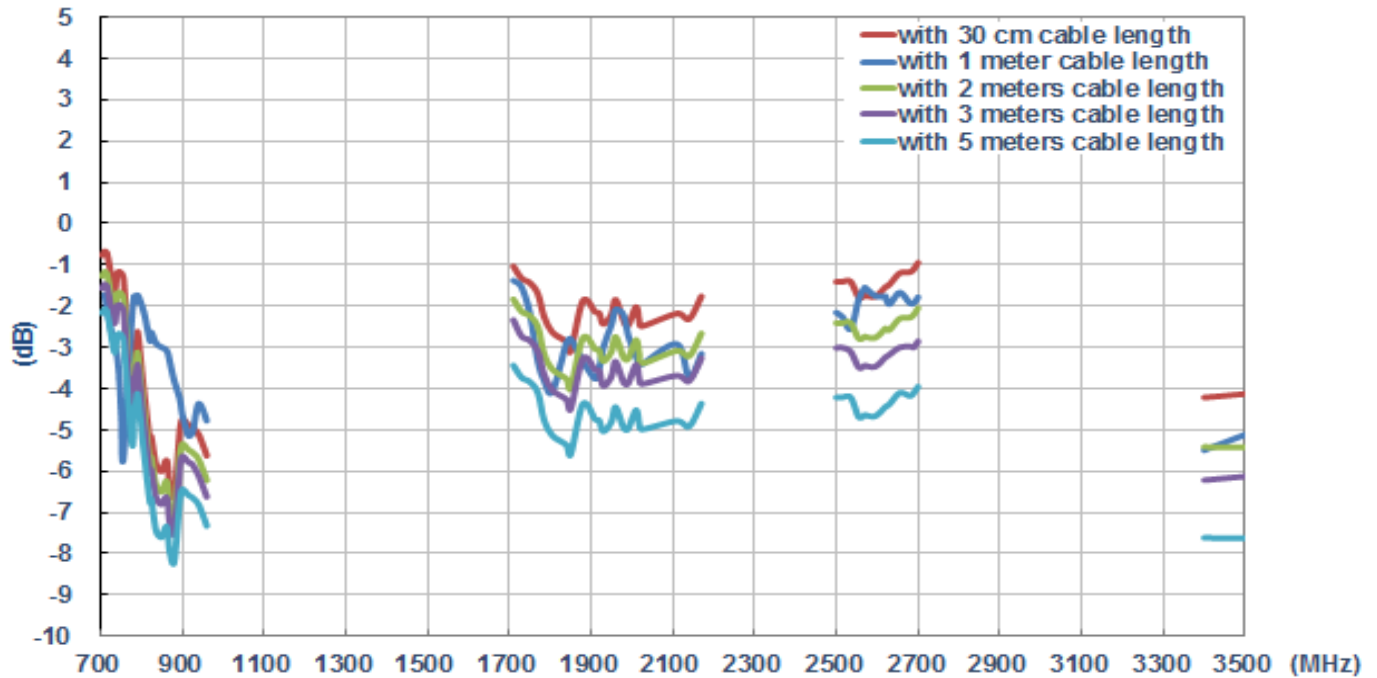
6.3.5 Efficiency (MIMO_2 in on the glass)



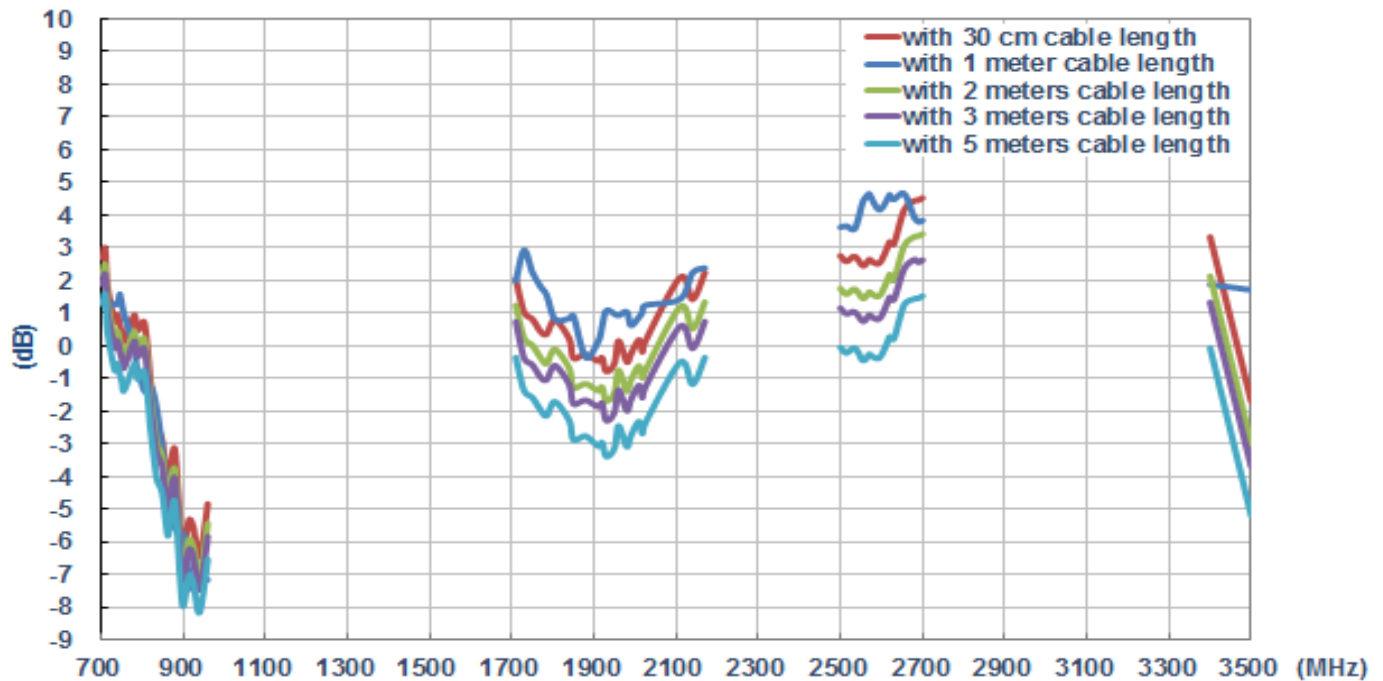
6.3.6 Average Gain (MIMO_1 on the glass)



6.3.7 Average Gain (MIMO_2 on the glass)



6.3.8 Peak Gain (MIMO_1 on the glass)



6.3.9 Peak Gain (MIMO_2 on the glass)

