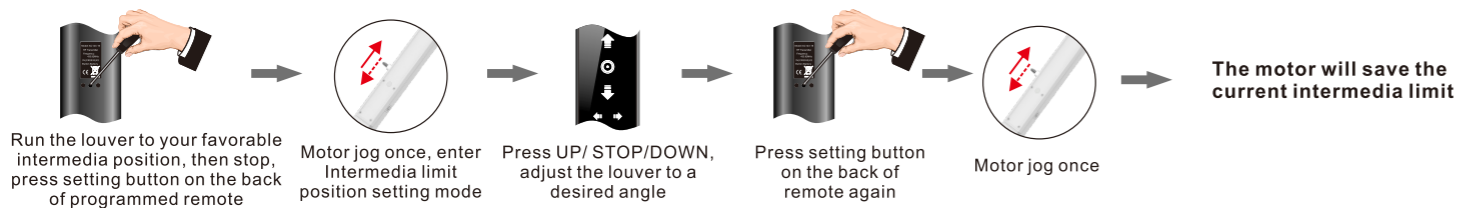
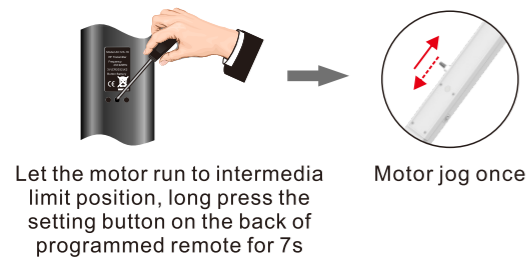


## 9. Intermedia limit position setting

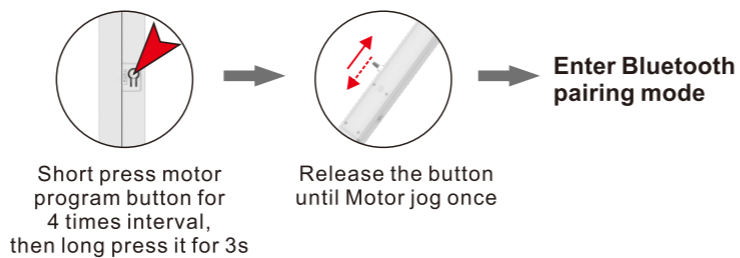


## 10. Delete Intermedia limit

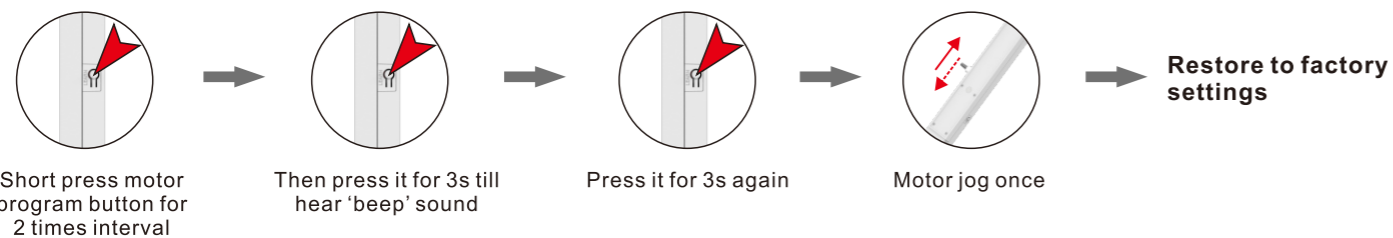


## 11. Send motor to Bluetooth pairing mode

(4 short press and 1 long press)



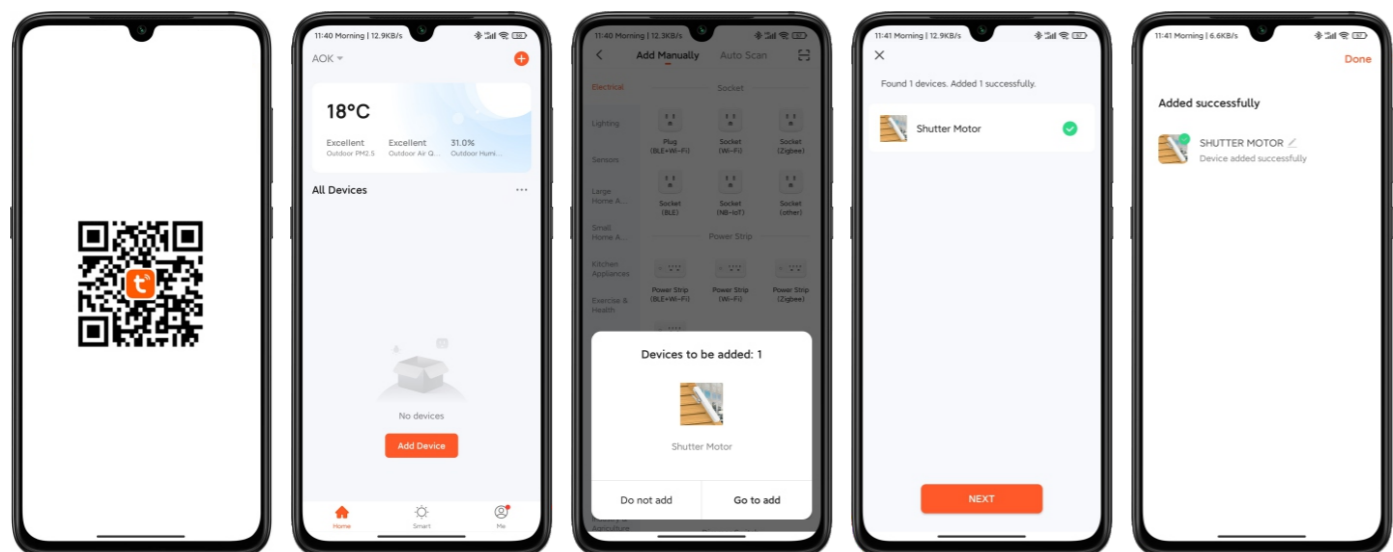
## 12. Restore factory settings ( 2 shot press + 2 long press)



Restore factory settings won't delete movement calibration position, if there is problem with journey calibration, need to do the Movement calibration function again.

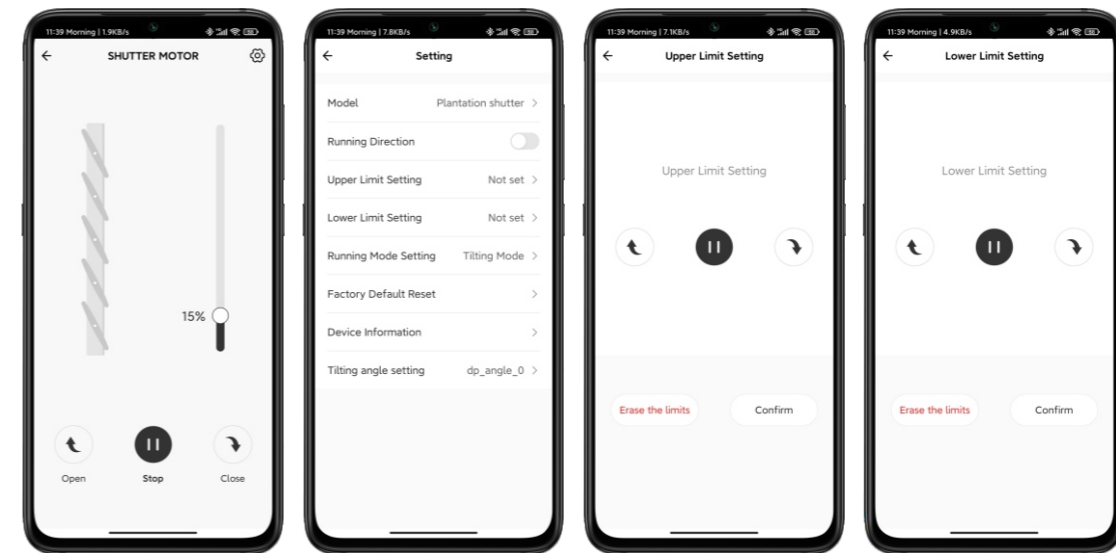
## 13. APP Operating instructions

### 1. Add device



- a. Scan above barcode to download Tuya App, or Download the APP "Tuya Smart" on Apple Store or Google Play Store, register an account and login in.
- b. press 'add device' or press '+' button in the top right-hand corner.
- c. The App will automatically scan the motor nearby you. Choose the one you want to add and press 'Go to add'
- d. press 'next'
- e. press 'done', device added.

## 2. APP functions



- a. open: motor moving up  
b. stop: motor stop running  
c. close: motor moving down  
d. Percentage control: you can move to any position you want, the positions between upper limit and lower limit display in percentage.
- e. Reverse the running direction: Reverse the running direction of open and close, this function is designed for installing the motor upside down.
- f. Set upper limit: set upper limit on current position, can adjust positions by pressing open and close.
- g. Set lower limit: set lower limit on current position, can adjust positions by pressing open and close.
- h. Delete limits: delete upper limit and lower limit at the same time. The motor will restore to max journey limit and minimum journey limit.

## VI. Trouble shooting

No.	Issues description	Reasons	Solutions
1	After motor installed, it's not moving or moving slowly	A. motor overloaded B. Low battery capacity	A. check the motor if it's installed in a right way B. charge the battery
2	The motor stops suddenly when running	C. motor overload D. Low battery capacity E. Motor over heated	C. check the louvers are whether get stuck D. charge the battery E. run the motor when its temperature colds down.
3	Motor can only be stop by hitting obstacle each time	F. There is running deviation for the motor or motor installed in a wrong position.	F. Set the Movement calibration function again and check whether motor is installed properly

This device contains licence-exempt transmitter(s)/receiver(s) that comply with Innovation, Science and Economic Development Canada's licence-exempt RSS(s) and Part 15 of the FCC Rules. Operation is subject to the following two conditions: (1) This device may not cause interference. (2) This device must accept any interference, including interference that may cause undesired operation of the device

Cet appareil contient des émetteurs / récepteurs exempts de licence conformes aux RSS (RSS) d'Innovation, Sciences et Développement économique Canada. Le fonctionnement est soumis aux deux conditions suivantes : (1) Cet appareil ne doit pas causer d'interférences. (2) Cet appareil doit accepter toutes les interférences, y compris celles susceptibles de provoquer un fonctionnement indésirable de l'appareil

This device has been tested and found to comply with the limits for a Class B digital device, pursuant to Part 15 of the FCC Rules. These limits are designed to provide reasonable protection against harmful interference in a residential installation. This device generates, uses and can radiate radio frequency energy and, if not installed and used in accordance with the instructions, may cause harmful interference to radio communications.

However, there is no guarantee that interference will not occur in a particular installation. If this device does cause harmful interference to radio or television reception, which can be determined by turning the device off and on, the user is encouraged to try to correct the interference by one or more of the following measures:

- Reorient or relocate the receiving antenna.
- Increase the separation between the device and receiver.
- Connect the device into an outlet on a circuit different from that to which the receiver is connected.
- Consult the dealer or an experienced radio/TV technician for help

Changes or modifications not expressly approved by the party responsible for compliance could void the user's authority to operate the equipment