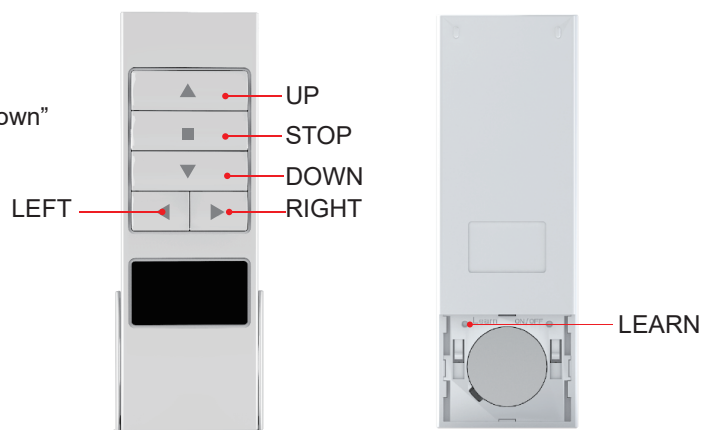


AC136 Remote INSTRUCTION

- ▲ Press one time "UP" ; Press two times within 0.5s "Continuous UP"
- Stop open or Stop close
- ▼ Press one time "Down" ; Press two times within 0.5s "Continuous Down"
- Programmed Setting
- ▶ Use for choose the channels by recurrently



Key Combination function

- "STOP"+"STOP": Dot Move convert to Continuous Move
- "STOP"+"UP": Add New Transmitter
- "STOP"+"DOWN": Change Direction
- "STOP"+"Channels Switch" : Lock Channel
- "STOP"+"Channels Switch" : Unlock Channel

AC136-06 is a handheld wireless transmitter, tailored for the motor, easy to deal with a variety of use scenarios. It looks fashionable and generous, feel very good in touching; remote distance is far, intelligent life

Features

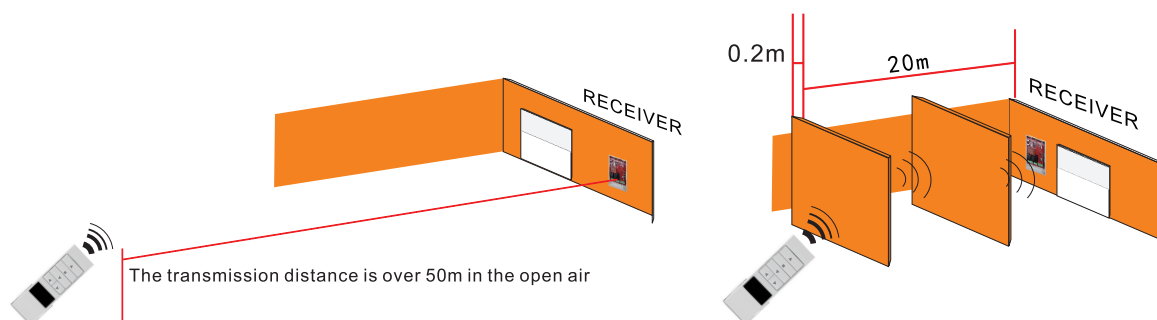
1. Stylish and elegant appearance can be applied to different decoration styles.
2. Ultra-low power consumption design.
3. Universal CR2450 button battery, easy to install and purchase.
4. High stability, strong anti-interference ability.

Product installation

1. The shortest distance between the launcher and the ground is 1.5m.
2. The minimum distance between the receiver and the transmitter is 1m.
3. Do not install on metal object, otherwise it will affect the firing distance.
4. Do not install in damp or exposed place, otherwise it will affect the service life of the machine Please comply with the following requirements while meeting the effective power standards:

⚠ Note

- Transmission range: within 50 meters of open space
- Avoid static interference, which can damage some electronic components



Operating instructions

1. Function of the button

1. **【Up】** Press the "up button"; Press "up" twice within 0.5 seconds, continuous going up
2. **【Stop】** Stop opening or closing.
3. **【Down】** Press "down"; Press "up" twice within 0.5 seconds, continuous going down
4. **【Programming】** Programming setting.
5. **【Channel selection】** For loop selection remote control channel.
6. **【Stop in the middle】** : Let the curtain run to the set intermediate stop point.

2. Key combination function

1. **【Stop】 + 【Stop】** : Switch from inching to continuous inching.
2. **【Stop】 + 【Up】** : Added transmitter
3. **【Stop】 + 【Down】** : Change direction.
4. **【Stop】 + 【Channel switch】** : Frequency locking.
5. **【Stop】 + 【Channel switch】** : Frequency unlocking.

OPERATION INSTRUCTION

FCC STATEMENT

1. This device complies with Part 15 of the FCC Rules. Operation is subject to the following two conditions:
 - (1) This device may not cause harmful interference.
 - (2) This device must accept any interference received, including interference that may cause undesired operation.
2. Changes or modifications not expressly approved by the party responsible for compliance could void the user's authority to operate the equipment.

NOTE: This equipment has been tested and found to comply with the limits for a Class B digital device, pursuant to Part 15 of the FCC Rules. These limits are designed to provide reasonable protection against harmful interference in a residential installation. This equipment generates, uses and can radiate radio frequency energy and, if not installed and used in accordance with the instructions, may cause harmful interference to radio communications.

However, there is no guarantee that interference will not occur in a particular installation. If this equipment does cause harmful interference to radio or television reception, which can be determined by turning the equipment off and on, the user is encouraged to try to correct the interference by one or more of the following measures:

1. Reorient or relocate the receiving antenna.
2. Increase the separation between the equipment and receiver.
3. Connect the equipment into an outlet on a circuit different from that to which the receiver is connected.
4. Consult the dealer or an experienced radio/TV technician for help.

IC STATEMENT

This device complies with Industry Canada license-exempt RSS standard(s). Operation is subject to the following two conditions:

- (1) this device may not cause harmful interference, and
- (2) this device must accept any interference received, including interference that may cause undesired operation.

Avis d'Industrie Canada (IC): Cet appareil est conforme avec Industrie Canada exempts de licence standard RSS (s).

Son fonctionnement est soumis aux deux conditions suivantes:

- (1) cet appareil ne doit pas provoquer d'interférences et
- (2) cet appareil doit accepter toute interférence, y compris celles pouvant causer un mauvais fonctionnement de l'appareil.

Information concernant l'exposition à l'énergie radiofréquence

Votre appareil est conçu et fabriqué pour ne pas dépasser les limites d'émission pour l'exposition à l'énergie RF établie par le gouvernement du Canada (IC). Les informations sur votre appareil sont en fichier avec l'IC et peuvent être trouvées sous la section Affichage Grant de <https://sms-sgs.ic.gc.ca/equipmentRecherche> après la recherche sur l'IC pour votre appareil, qui se trouve sur le À l'arrière de l'appareil.

Fault handling

Fault phenomenon	Analyze	Solution
Operate transmitter, receiver no response	1、 The receiver is not working properly 2、 Transmitter battery low battery	A、 Receiver working properly B、 Replace with a new battery
The remote control is not sensitive or responsive	1、 The remote control battery is low battery	A、 Replace with a new battery