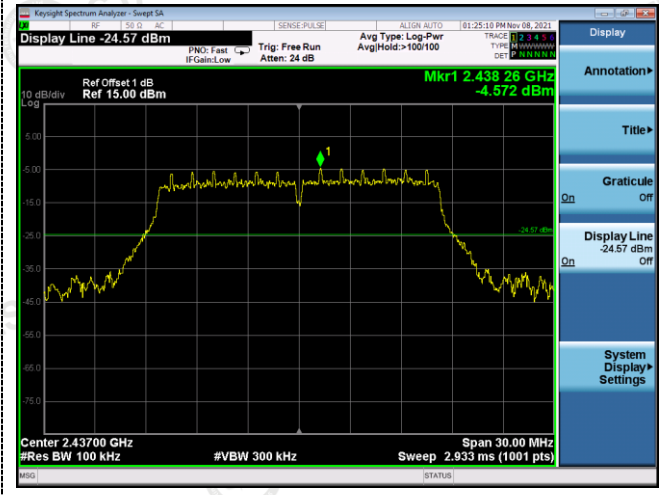
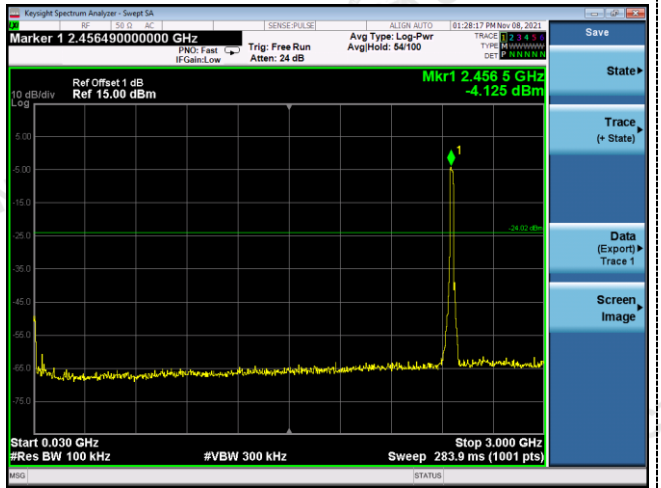
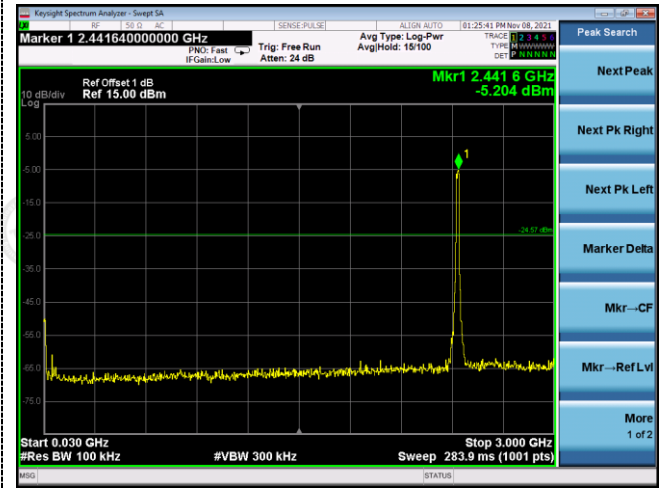


802.11g



Reference
CH06

Reference
CH11



30MHz-3GHz

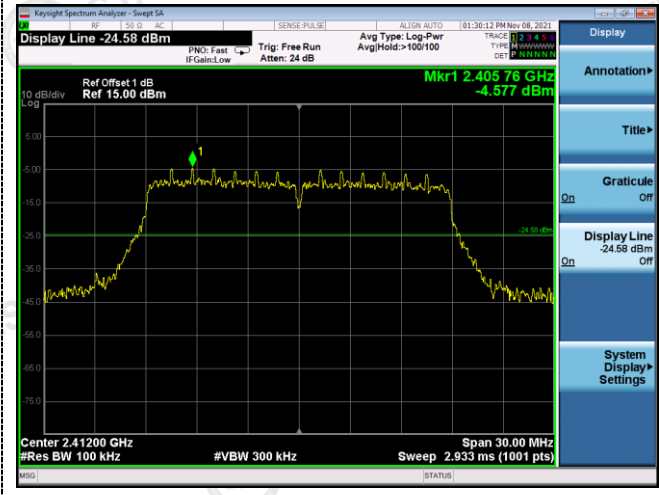
30MHz-3GHz



3GHz -25GHz

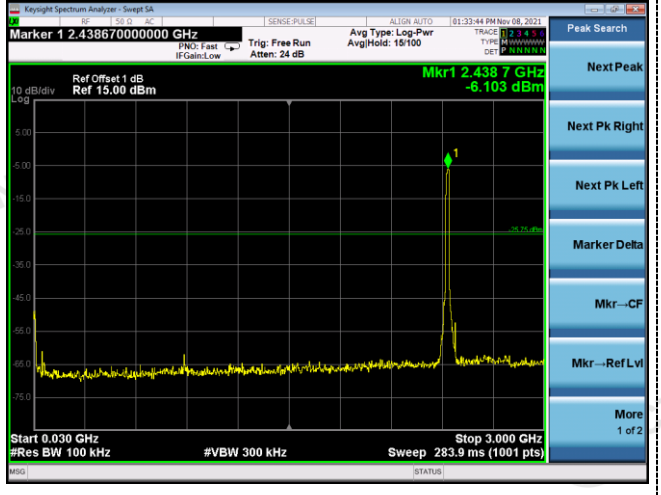
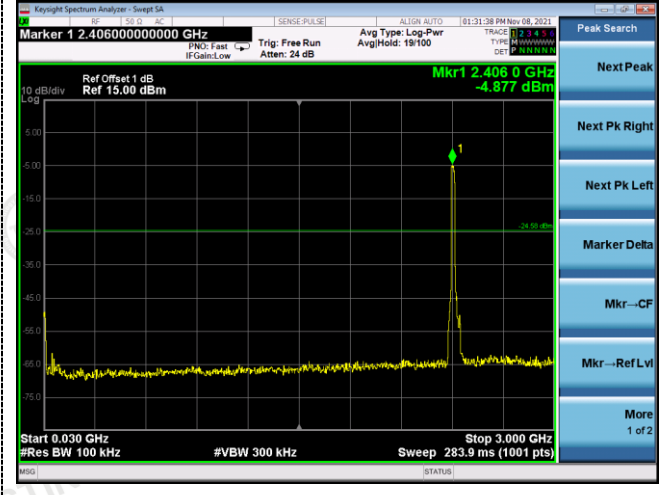
3GHz -25GHz

802.11n20



Reference
CH01

Reference
CH06



30MHz-3GHz

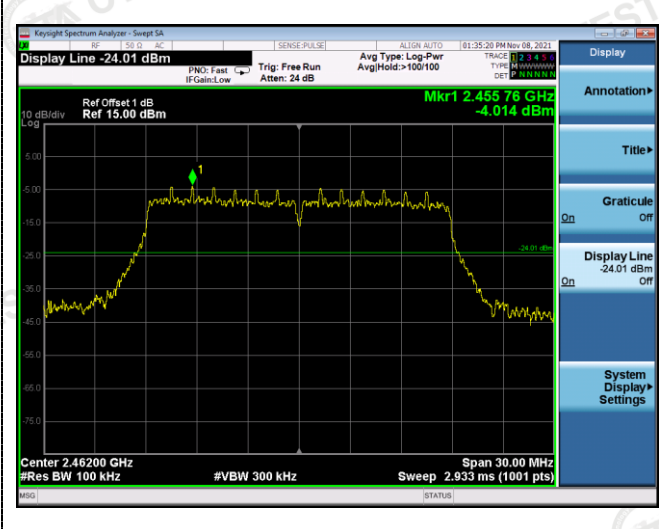
30MHz-3GHz



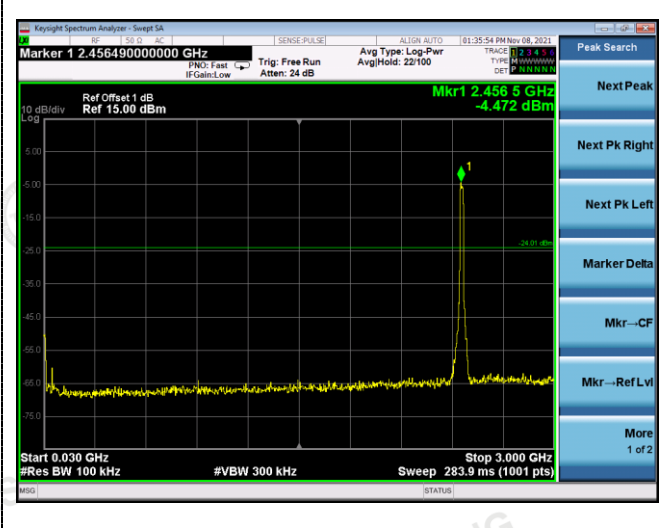
3GHz -25GHz

3GHz -25GHz

802.11n20



Reference
CH11

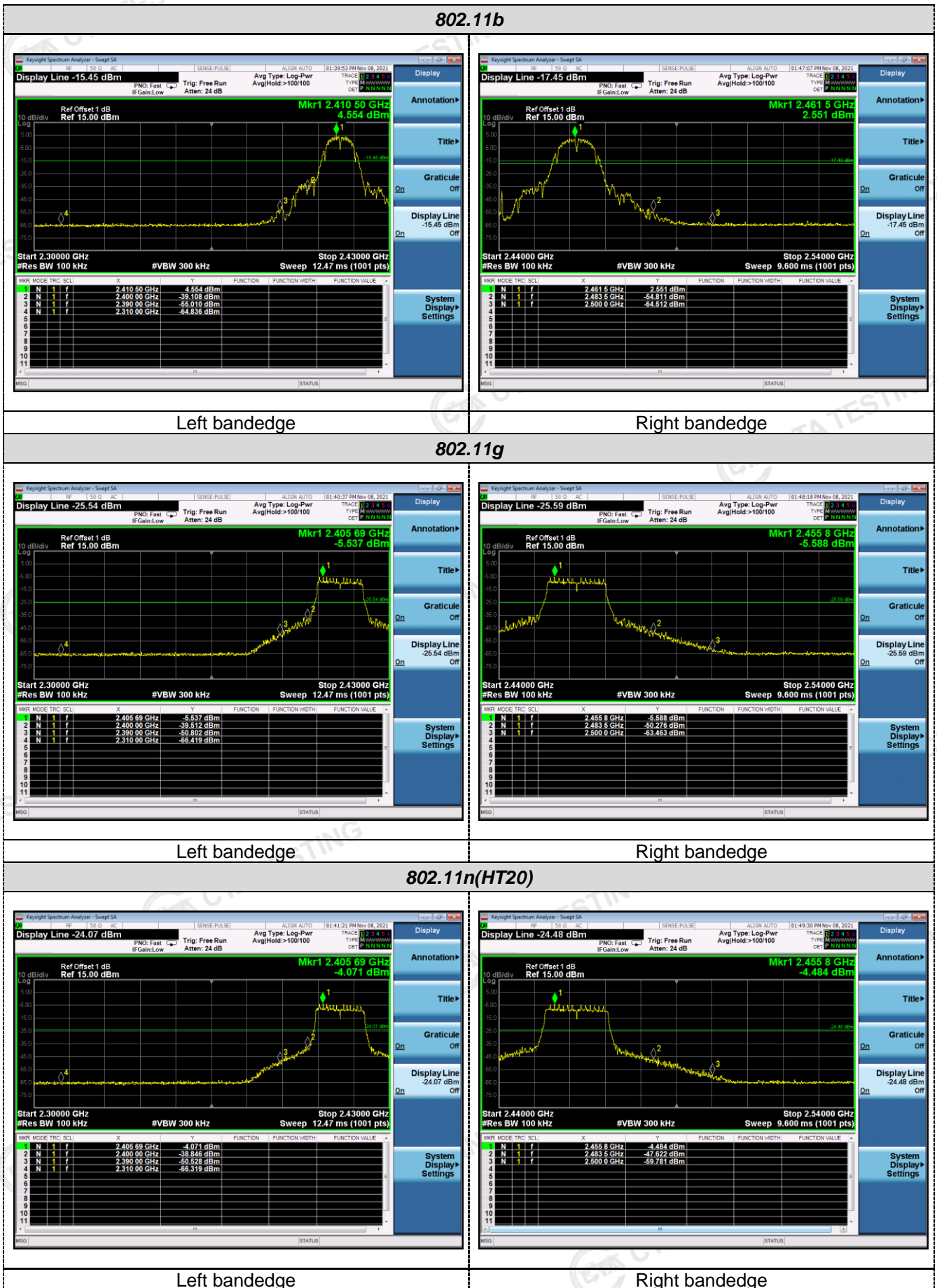


30MHz-3GHz



3GHz -25GHz

Band-edge Measurements for RF Conducted Emissions:



4.7 Antenna Requirement

Standard Applicable

For intentional device, according to FCC 47 CFR Section 15.203:

An intentional radiator shall be designed to ensure that no antenna other than that furnished by the responsible party shall be used with the device. The use of a permanently attached antenna or of an antenna that uses a unique coupling to the intentional radiator, the manufacturer may design the unit so that a broken antenna can be replaced by the user, but the use of a standard antenna jack or electrical connector is prohibited

FCC CFR Title 47 Part 15 Subpart C Section 15.247(c) (1) (I):

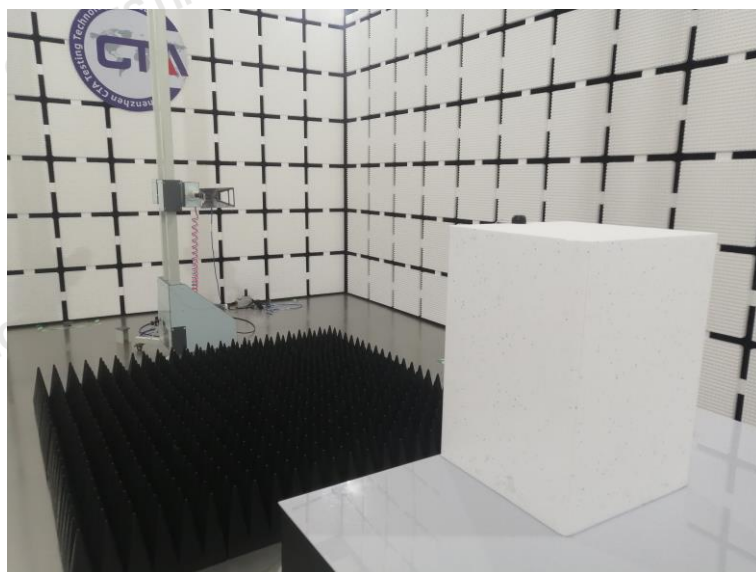
(i) Systems operating in the 2400-2483.5 MHz band that is used exclusively for fixed. Point-to-point operations may employ transmitting antennas with directional gain greater than 6dBi provided the maximum conducted output power of the intentional radiator is reduced by 1 dB for every 3 dB that the directional gain of the antenna exceeds 6dBi.

Test Result:

The maximum gain of antenna -1.0 dBi for 2.4GHz WIFI.

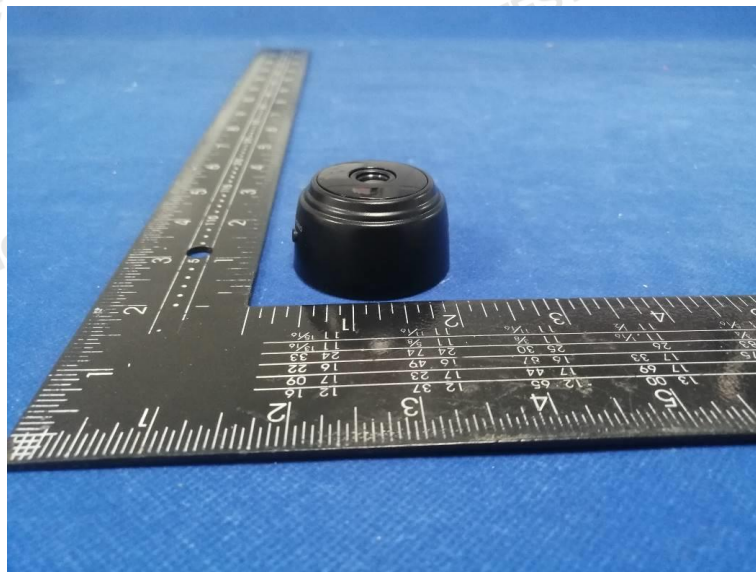
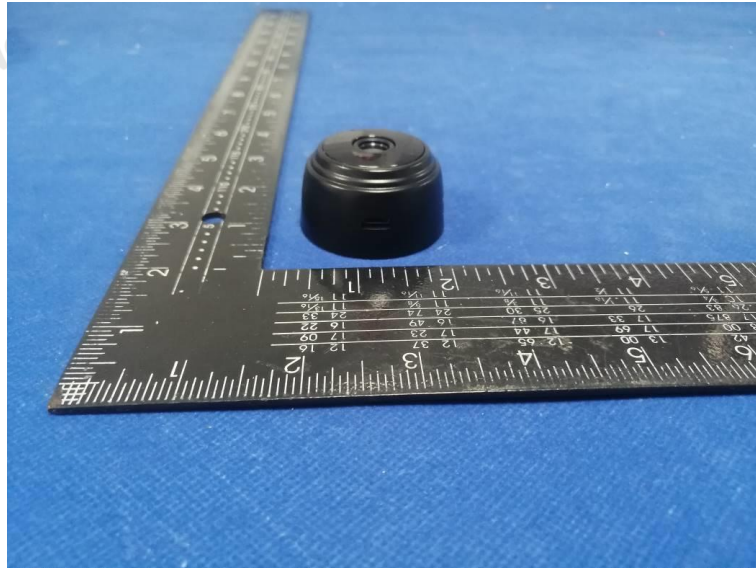
Remark: The antenna gain is provided by the customer, if the data provided by the customer is not accurate, Shenzhen CTA Testing Technology Co., Ltd. does not assume any responsibility.

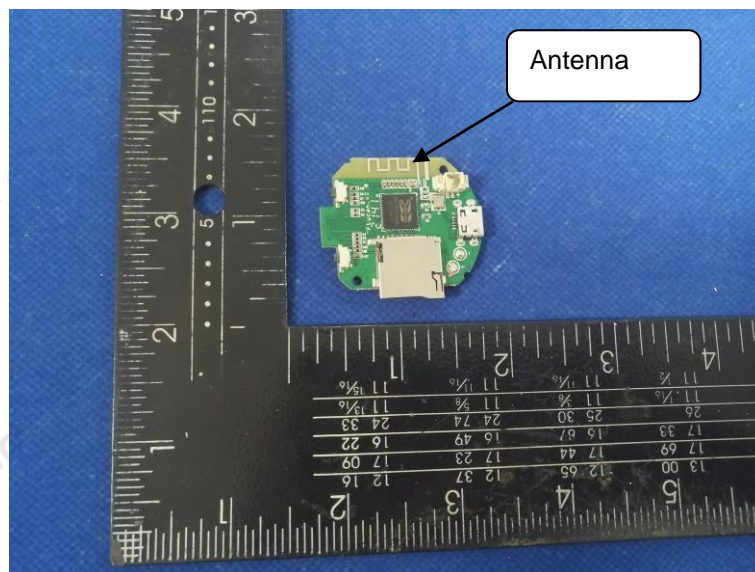
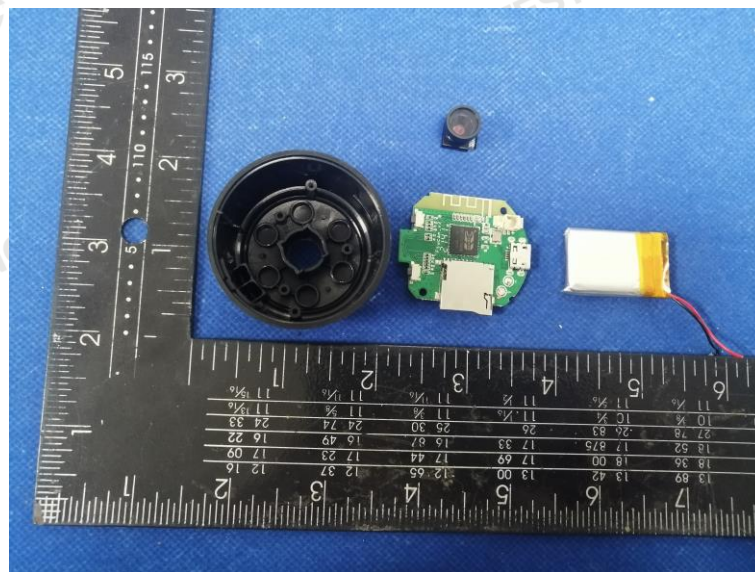
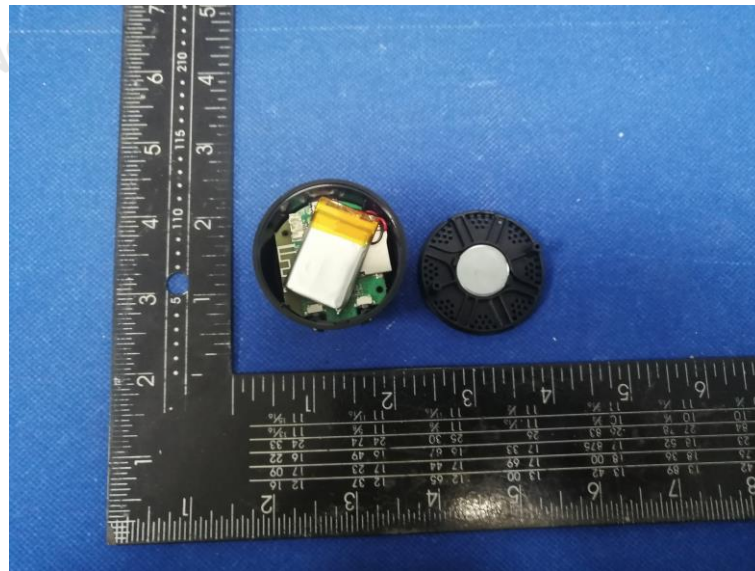
5 Test Setup Photos of the EUT

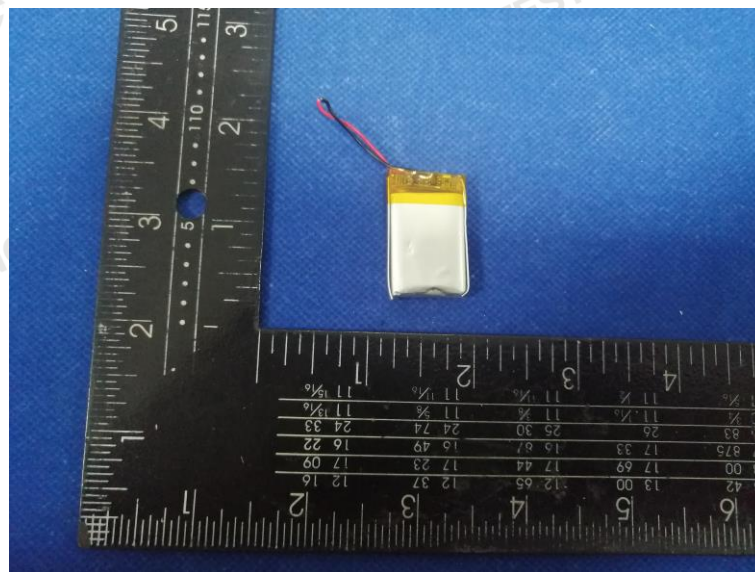
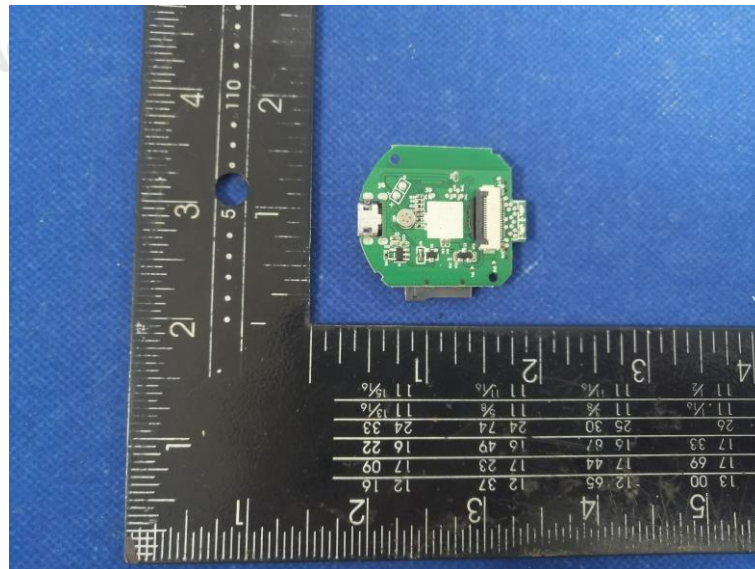


6 Photos of the EUT









***** End of Report *****