



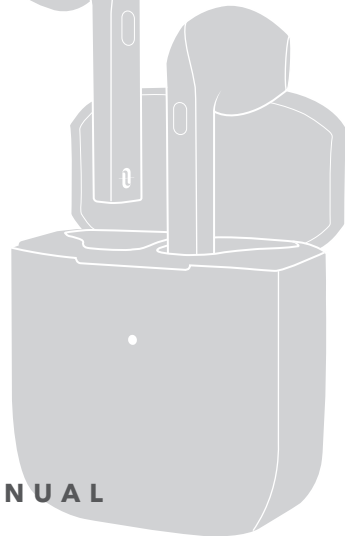
TAOTRONICS **SoundLiberty A10**

TAOTRONICS

**Questions or
Concerns?**

support@taotronics.com
FCC ID: 2AVUHTT-BH096

USER MANUAL



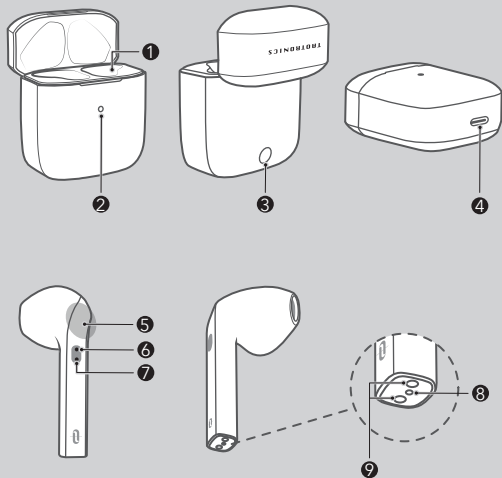
CONTENTS

SETTING UP YOUR EARBUDS
(01-02)

USING YOUR EARBUDS
(02-06)

CLEANING AND MAINTENANCE
(06)

TROUBLESHOOTING GUIDE
(07-09)



Your Earbuds

- ① Charging Slot
- ② Charging Indicator
- ③ Reset Button
- ④ USB-C Charging Port
- ⑤ Multifunction Touch Control

- ⑥ LED Indicator
- ⑦ Microphone ①
- ⑧ Microphone ②
- ⑨ Charging Contacts

SETTING UP YOUR EARBUDS

Wearing

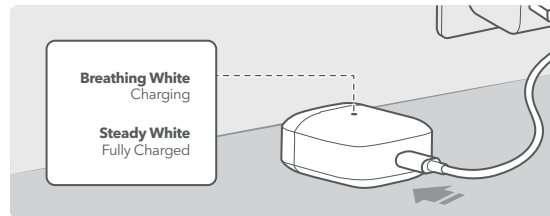


Charging

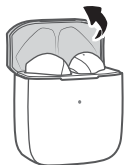


We highly recommend that you fully charge the earbuds before using them for the first time.

1. Place the earbuds into the charging case.
2. Close the case and connect to any USB charging port with the included cable.

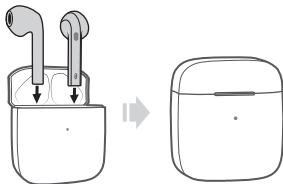


Power ON / OFF



ON

Uncover the lid to power on.



OFF

Place back and close the case to power off.

USING YOUR EARBUDS

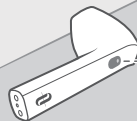
Bluetooth Caution



- Place the two devices to be connected close to each other and turn off other Bluetooth devices.
- The maximum effective Bluetooth range may vary with the environmental circumstances. Obstacles (walls, fences, etc.) between the two devices may shorten the effective range.

Bluetooth Pairing - Binaural Mode

1. Uncover the lid to turn on the earbuds, both earbuds will connect with each other automatically.
2. Turn on the Bluetooth function on your device and search for nearby devices.
3. Find "TaoTronics A10" in the search results, tap to connect.



Blinking White & Blue
Bluetooth Pairing

Breathing Blue x3
Bluetooth Connected



- Each time you power on your earbuds, it will automatically connect to your last successfully connected device if available within the Bluetooth range.
- When the earbuds are disconnected from your device for more than 10 minutes, they will turn off automatically.

Bluetooth Pairing - Mono Mode

- When Bluetooth connected, you can use either one of the earbuds as per your preference.
- Take out one earbud, and make sure the other one is placed in the case with the lid covered.

! If you want to change to binaural mode, simply take out the other earbud from the charging case, they will pair with each other automatically.

⊗ When failed to automatically pair with Bluetooth device, you can manually pair as instructed below without clearing pairing history.

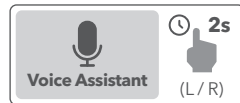
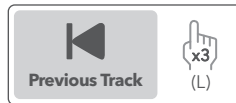
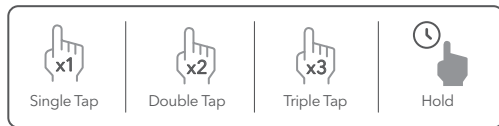
1. Place both earbuds back in the charging case with the lid uncovered.
2. Press and hold the Reset Button for 3 seconds until the LED indicator on the charging case flashes white three times.



Control and Function



When the earbud is taken off under music, the music will be paused.

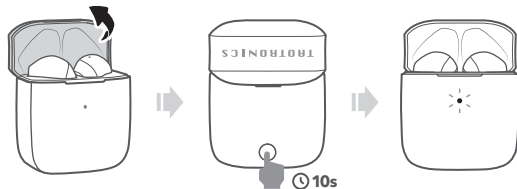


! Once paired, press and hold for 2 seconds until a beep is heard, release to activate voice assistant. Or hold for 1 second longer to adjust volume.

Resetting Your Earbuds

Reset the earbuds if failed to connect with your device properly.

1. Remove "TaoTronics A10" from the Bluetooth device list.
2. Place the earbuds back into the charging case and keep the cover open.
3. Press and hold the Reset Button for 10 seconds until the LED indicator on the charging case flashes white three times.



- ⚠ To pair with another Bluetooth device, deactivate the Bluetooth function on the paired device or remove "TaoTronics A10" from its Bluetooth list.

CLEANING AND MAINTENANCE

- Wipe only with a dry, soft cotton swab or equivalent. Never insert anything into the nozzle.
- Clean the earbuds and the charging case regularly.
- Keep away from sharp objects to avoid scratches.
- Place in a dry and shady place if it is to be idle for a long time.
- DO NOT clean with detergent or chemicals.

TROUBLESHOOTING GUIDE



Earbuds fall off easily :

Securely wear the earbuds (see "Wearing").



Bluetooth Connection

Cannot connect with your device :

- Make sure the Bluetooth function is activated before pairing.
- Place the device to be connected close to the earbuds. Move both devices away from other Bluetooth devices.
- Remove the earbuds from the Bluetooth list when already paired before.
- Reset the earbuds and pair again (see "Resetting Your Earbuds").

Intermittent connection for one of the earbuds :

- Make sure there are no obstacles between the two devices.
- Fully charge the earbuds.
- Reset the earbuds and pair again (see "Resetting Your Earbuds").

Bluetooth disconnected frequently :

- Make sure the earbuds are within the effective range (e.g., 30 ft. / 9 m) of your device. The range may vary with the environmental circumstances.
- Turn off other Bluetooth devices to decrease the interference.
- Remove the earbuds from the Bluetooth list and connect again.



Sound Help

Poor sound quality :

- Try a quiet indoor environment.
- Clear any debris from the earbud nozzles.
- Place both devices close to each other or remove the obstacles between them.
- Try a different audio source or device.
- For poor call quality, check that the microphone is not blocked or covered.

Earbuds in different volume :

- Clear any debris from the earbud nozzles.
- Try a different audio source.

Chirping sound :

- It is normal that a slight white noise will be heard under in a quiet environment.
- Try in an open space without disturbance.

Earbuds do not turn on / working :

- Check if the battery of the earbuds or charging case is low or empty (see "Charging").
- Make sure there is no dirt or debris covering the charging contacts on the earbuds or the charging pins in the case.

Earbuds do not respond to touch control :

- Make sure you are touching the correct touch control surface.
- Make sure you put on the earbuds properly.
- Make sure your fingers are dry.
- Reset the earbuds and pair again (see "Resetting Your Earbuds").



Operation



Charging

Failed to charge the earbuds / charging case :

- Make sure there is no dirt or debris covering the charging contacts on the earbuds or the charging pins in the case.
 - Place both earbuds in the charging case properly until they magnetically snap into place.
 - Make sure the charging case is fully charged.
- If charging failed, try with another 5V 1A charger.

Battery life shortened after using for an extended period of time :

- For optimal battery life, make sure the earbuds are fully charged.
- The actual battery life may vary with the music type and volume used to some extent. If it is 2 or more hours shorter as described, please contact our Customer Support for replacement.
- The more the number of charge and discharge cycles, the shorter the battery life.
- The more the number of over discharges, the shorter the battery life. Charge the earbuds at least once every 6 months.

IMPORTANT SAFETY INSTRUCTIONS

Please read the instructions thoroughly before using this product and retain it for future reference.

HEARING SAFETY

- DO NOT wear earbuds with high volume for a long time to avoid damaging your hearing.
- Set the earbuds to low volume before you put them on, then increase the volume gradually as per your preference.
- DO NOT set volume too high to stay aware of your surroundings.
- Please refer to local laws and regulations if you want to answer phone calls via this device during driving.
- For your safety, avoid distraction from music or phone calls when you are driving or doing other activities with potential dangers.

CAUTION

- DO NOT expose this product to high temperatures.
- DO NOT immerse the earbuds into water or expose them to humidity for a long time.
- DO NOT clean the product with detergent containing alcohol, ammonia, benzene or abrasives.
- Avoid dropping.
- Place the earbuds back into the charging case when not in use and keep it away from children and pets to avoid choking hazard.
- Unauthorized disassembly of any parts of this product is forbidden, which may cause fire hazard, warranty voidance, and/or property loss.
- DO NOT use the product in thunderstorm to avoid malfunction or electric shock.
- Always ask a professional technician or authorized personnel for repair.



This product contains lithium battery. Never expose it to excessive heat such as direct sunlight or fire to avoid explosion.



The *Bluetooth*® word mark and logos are registered trademarks owned by the Bluetooth SIG, Inc. and any use of such marks by Sunvalleytek International Inc. is under license. Other trademarks and trade names are those of their respective owners.

NOTE

This equipment has been tested and found to comply with the limits for a Class B digital device, pursuant to part 15 of the FCC Rules. These limits are designed to provide reasonable protection against harmful interference in a residential installation. This equipment generates uses and can radiate radio frequency energy and, if not installed and used in accordance with the instructions, may cause harmful interference to radio communications. However, there is no guarantee that interference will not occur in a particular installation. If this equipment does cause harmful interference to radio or television reception, which can be determined by turning the equipment off and on, the user is encouraged to try to correct the interference by one or more of the following measures:

- Reorient or relocate the receiving antenna.
- Increase the separation between the equipment and receiver.
- Connect the equipment into an outlet on a circuit different from that to which the receiver is connected.
- Consult the dealer or an experienced radio/TV technician for help

Changes or modifications not expressly approved by the party responsible for compliance could void the user's authority to operate the equipment.

This device complies with Part 15 of the FCC Rules. Operation is subject to the following two conditions:

- (1) this device may not cause harmful interference, and
- (2) this device must accept any interference received, including interference that may cause undesired operation.



WEEE COMPLIANCE

Correct Disposal of This Product (Waste Electrical & Electronic Equipment)

(Applicable in countries with separate collection systems)

This marking on the product, accessories or literature indicates that the product and its electronic accessories should not be disposed of with other household waste at the end of their working life. To prevent possible harm to the environment or human health from uncontrolled waste disposal, please separate these items from other types of waste and recycle them responsibly to promote the sustainable reuse of material resources. Household users should contact either the retailer where they purchased this product, or their local government office, for details of where and how they can take these items for environmentally safe recycling. Business users should contact their supplier and check the terms and conditions of the purchase contract. This product and its electronic accessories should not be mixed with other commercial wastes for disposal.

WARRANTY AND SERVICE

Thanks for choosing TaoTronics Earbuds.

This product is covered with TaoTronics product and labor warranty for 12 months from the date of its original purchase.

We can only provide after sales service for products that are sold by TaoTronics or TaoTronics authorized retailers and distributors. If you have purchased your unit from a different place, please contact your seller for return and warranty issues.

※Please have your invoice and order ID ready before contacting Customer Support.



support@taotronics.com



www.taotronics.com



Manufacturer: Shenzhen NearbyExpress Technology Development Co.,Ltd.
Address: Floor 7, Building E, Galaxy World Phase II, Shenzhen, China



MADE IN CHINA