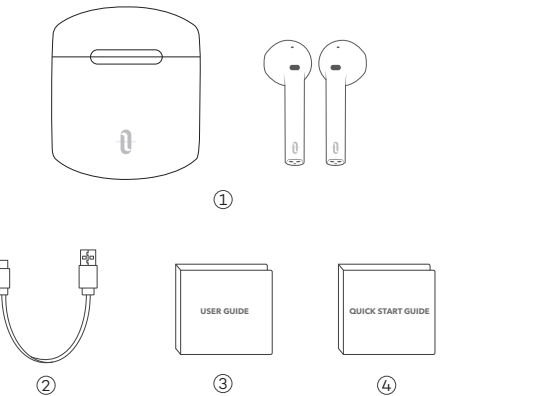


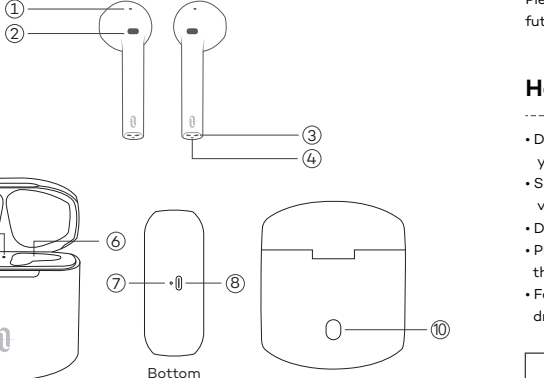
Model: TT-BH095
TaoTronics SoundLiberty 95
True Wireless Stereo Earbuds
User Guide

Package Contents



- ① TaoTronics True Wireless Stereo Earbuds (TT-BH095)
- ② 1 x USB-C Charging Cable
- ③ 1 x User Guide
- ④ 1 x Quick Start Guide

Product Diagram



- ① Microphone
- ② Multifunction Touch Control
- ③ Charging Indicator
- ④ Microphone
- ⑤ LED Indicator
- ⑥ Charging Slot
- ⑦ Charging Indicator
- ⑧ USB-C Charging Port
- ⑨ Charging Case
- ⑩ Reset Button

Important Safety Instructions

Please read the instructions thoroughly before using this product and retain it for future reference.

Hearing Safety

- Do not wear earbuds with high volume for a long time to avoid damaging your hearing.
- Set the earbuds to low volume before you put them on, then increase the volume gradually as per your preference.
- Do not set volume too high to stay aware of your surroundings.
- Please refer to local laws and regulations if you want to answer phone calls via this device during driving.
- For your safety, avoid distraction from music or phone calls when you are driving or doing other activities with potential dangers.

Warning: Please set the volume to proper level to avoid hearing damages.

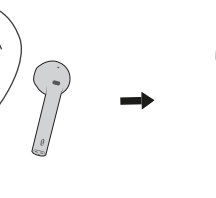
Caution

- Do not expose this product to high temperatures.
- Do not immerse the earbuds into water or expose them to humidity for a long time.
- Do not clean the product with detergent containing alcohol, ammonia, benzene or abrasives.
- Avoid dropping.
- Place the earbuds back into the charging case when not in use and keep it away from children and pets to avoid choking hazard.
- Unauthorized disassembly of any parts of this product is forbidden, which may cause fire hazard, warranty voidance, and/or property loss.
- Close attention is needed when using near children.
- Keep the charging case away from water, rain or any other liquid.
- Don't use the product in thunderstorm to avoid malfunction or electric shock.
- Always ask a professional technician or authorized personnel for repair.

Warning: This product contains lithium battery. Never expose it to excessive heat such as direct sunlight or fire to avoid explosion.

Wear Your Earbuds

Please wear the earbuds as shown below.



Bluetooth Caution

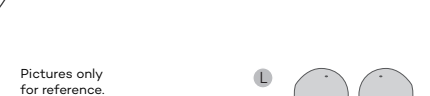
- When the device is connected wirelessly to another device, place the two devices close to each other to achieve their normal functionalities and avoid possible signal interference.
- When using a wireless connection, make sure there are no obstacles between the two devices. Obstacles including walls and fences may shorten the effective range.
- The maximum effective Bluetooth range may vary with the environmental circumstances.

Using Your Earbuds

Charging

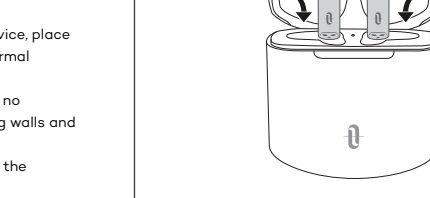
Charging the Earbuds

1. Put the earbuds into the charging case as per the L (left) and R (right) marks.
2. Cover the lid and charging will start automatically.



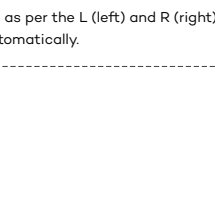
Charging the Charging Case

1. Connect the charging port with any USB charging adapter or active computer USB port.
2. The charging indicator will stay solid white, and turn off once fully charged.



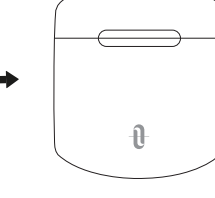
Power Off

Put the earbuds into the charging case and close the lid, they will turn off automatically.



Power On

Uncover the lid and they will power on automatically.



Pairing

- You can use one earbud or both earbuds as per your preference. Please refer to the corresponding pairing instructions.
- Before pairing, please turn off other Bluetooth devices and place the device to be connected close to the earbuds.
- When the earbuds are disconnected from your device for more than 10 minutes, they will turn off automatically.

Couple Earbuds Mode

1. Uncover the lid to turn on the earbuds, they will connect with each other automatically. The LED indicator on the charging case will flash blue and white alternately indicating the earbuds are in pairing mode now.
2. Turn on the Bluetooth function on your device and search for nearby devices. Find "TAOTRONICS SoundLiberty 95 L" in the searching results, tap on the name to connect.
3. Once connected, the LED indicator on the charging case will flash blue slowly.

Note

- The earbuds can remember the devices paired previously, and will attempt to pair with the last connected device for the first 20 seconds. If re-pairing failed in 20 seconds, the earbuds will enter pairing mode.
- It is not recommended to wear the two earbuds on different people. If necessary, please keep the two earbuds close to each other in couple earbuds mode.



www.taotronics.com

FCC ID: 2AVUHTT-BH095

E-mail: support@taotronics.com

MANUFACTURER: Shenzhen NearbyExpress Technology Development Co.,Ltd. Address: Floor 7, Building E, Galaxy World Phase II, Shenzhen, China

Learn more about the EU Declaration of Conformity: https://www.taotronics.com/pages/user-manual



TT-BH095_V1.0_EN

Single Earbud Mode

Pair both earbuds with your device in Couple Earbuds Mode before using in Single Earbud Mode.

Use Primary (Left) Earbud Only

- Take out the primary (left) earbud from the charging case, and make sure the secondary (right) earbud is placed in the charging case and the lid is covered.
- It will try to pair with the last connected device for the first 20 seconds. If re-pairing failed in 20 seconds, the earbud will enter pairing mode with voice prompt "Pairing" every 10 seconds.
- Turn on the Bluetooth function on your device and search for the nearby devices. Find "TAOTRONICS SoundLiberty 95 L" in the searching results, tap on the name to connect.

Use Secondary (Right) Earbud Only

- Take out the secondary (right) earbud from the charging case, and make sure the primary (left) earbud is placed in the charging case and the lid is covered.
- The secondary earbud will enter pairing mode with voice prompt "Pairing" every 10 seconds.
- Turn on the Bluetooth function on your device and search for the nearby devices. Find "TAOTRONICS SoundLiberty 95 R" in the searching results, tap on the name to connect.

Note:
If you want to change to couple mode, simply take out the other earbud from the charging case, they will pair with each other automatically.

Manually Pairing

- Place both earbuds back in the charging case with the lid uncovered.
- Press and hold the **Reset Button** for 3 seconds to disconnect the currently paired device.
- The earbuds will enter pairing mode with the LED indicator on the charging case flashing blue and white alternately.
- Pair with your new Bluetooth® device as instructed in "Pairing" section.

Note:
The pairing history will not be cleared under this operation.

Clear Pairing List

If you failed to pair your device with the earbuds, please clear the pairing history as instructed below:

- Place both earbuds back in the charging case with the lid uncovered.
- Press and hold the **Reset Button** for 8 seconds until the LED indicator on the charging case flash blue and white alternately.
- If you have paired your device with the earbuds before, remove "TAOTRONICS SoundLiberty 95 L" from the Bluetooth device list and pair again.
- Re-pair with your Bluetooth® device as instructed in "Pairing" section.

Note:
If you want to pair the earbuds with another device when you have already paired them with a device, deactivate the Bluetooth function on the paired device or clear "TAOTRONICS SoundLiberty 95 L" from its Bluetooth list. Restore the earbuds to factory settings as instructed above if pairing failed.

Operation and Functions

Function	Operation	Voice Prompt
Play / Pause	Only available in Couple Earbuds Mode: Tap the Touch Control on the right earbud twice under music	/
Next Track	Tap the Touch Control on the right earbud three times	/
Previous Track	Tap the Touch Control on the left earbud three times	/
Answer Phone Call	<ul style="list-style-type: none"> Answer via earbuds: Tap the Touch Control on either of the earbuds twice Answer via mobile phone: Tap Answer on the mobile phone 	/
Hang Up Phone Call	Tap the Touch Control on either of the earbuds twice	/
Decline an Incoming Call	Tap the Touch Control on either of the earbuds three times	Call rejected

Operation and Functions

Function	Operation	Voice Prompt
Turn On / Off Voice Control	<ul style="list-style-type: none"> Couple Earbuds Mode: Tap the Touch Control on the left earbud twice until a beep is heard Single Earbud Mode: Tap the touch control on either of the earbuds twice until a beep is heard 	Toot
Clear Pairing List	Refer to the "Clear Pairing List" section	/
Go into Pairing Mode	Refer to the "Pairing" section	Pairing
Successfully paired with your device	/	Connected
Bluetooth out of Range / Failed to pair with your device	/	Disconnected

Note:
Only when you are wearing the earbuds can you hear the voice prompt.

Cleaning and Maintenance

- Clean the earbuds and the charging case on a regular basis.
- Use dry and soft cotton cloth to wipe the unit.
- Keep away from sharp objects to avoid scratches.
- Put the unit in a dry and shady place if it is to be idle for a long time.
- Do not clean the product with detergent or chemicals.

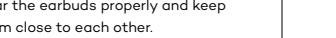
Note: Do not insert anything into the product.

Troubleshooting

No.	Problem	Solution
1	Failed to turn on the earbuds	Earbuds low battery, please charge them
2	Failed to charge the earbuds	<ul style="list-style-type: none"> Place the earbuds into the charging case properly Make sure the charging case is fully charged
3	Can't charge the charging case	Make sure the charging cable is intact and plugged in properly
4	Can't find "TAOTRONICS SoundLiberty 95 L" in the Bluetooth device list	<p>The earbuds reconnected with previously paired device automatically:</p> <ul style="list-style-type: none"> Deactivate the Bluetooth function of previously paired device or clear "TAOTRONICS SoundLiberty 95 L" from its Bluetooth device list, and then search again Put the device to be connected close to the earbuds
5	Failed to pair the earbuds with your device	<ul style="list-style-type: none"> Turn on the device and activate its Bluetooth function before pairing Bring the earbuds into pairing mode as instructed in the "Pairing" section

Warranty and Service

If any problems occur, please contact the TaoTronics Customer Care Centre via the contact information listed in this User Guide.



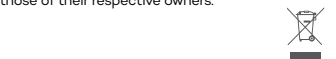
The Bluetooth® word mark and logos are registered trademarks owned by the Bluetooth SIG, Inc. and any use of such marks by Sunvalleytek International Inc. is under license. Other trademarks and trade names are those of their respective owners.

NOTE: This equipment has been tested and found to comply with the limits for a Class B digital device, pursuant to part 15 of the FCC Rules. These limits are designed to provide reasonable protection against harmful interference in a residential installation. This equipment generates uses and can radiate radio frequency energy and, if not installed and used in accordance with the instructions, may cause harmful interference to radio communications. However, there is no guarantee that interference will not occur in a particular installation. If this equipment does cause harmful interference to radio or television reception, which can be determined by turning the equipment off and on, the user is encouraged to try to correct the interference by one or more of the following measures:

- Reorient or relocate the receiving antenna.
- Increase the separation between the equipment and receiver.

- Connect the equipment into an outlet on a circuit different from that to which the receiver is connected.
- Consult the dealer or an experienced radio/TV technician for help

Changes or modifications not expressly approved by the party responsible for compliance could void the user's authority to operate the equipment. This device complies with Part 15 of the FCC Rules. Operation is subject to the following two conditions:
(1) this device may not cause harmful interference, and
(2) this device must accept any interference received, including interference that may cause undesired operation.



WEEE Compliance
Correct Disposal of This Product (Waste Electrical & Electronic Equipment) (Applicable in countries with separate collection systems)

This marking on the product, accessories or literature indicates that the product and its electronic accessories should not be disposed of with other household waste at the end of their working life. To prevent possible harm to the environment or human health from uncontrolled waste disposal, please separate these items from other types of waste and recycle them responsibly to promote the sustainable reuse of material resources. Household users should contact either the retailer where they purchased this product, or their local government office, for details of where and how they can take these items for environmentally safe recycling. Business users should contact their supplier and check the terms and conditions of the purchase contract. This product and its electronic accessories should not be mixed with other commercial wastes for disposal.