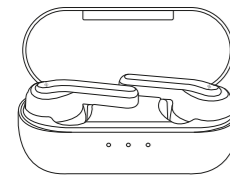


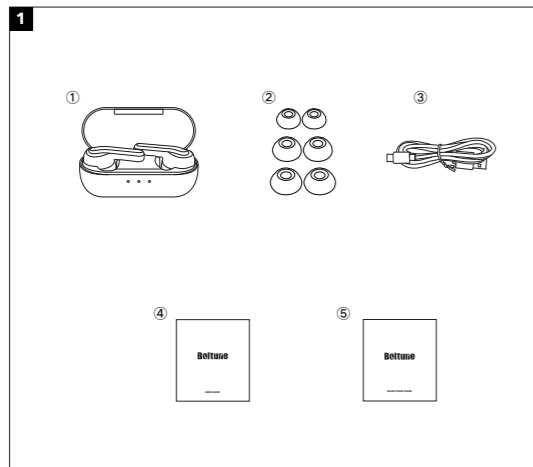
# Boltune



## USER GUIDE

Active Noise Cancelling  
True Wireless Stereo Earbuds  
Model: BT-BH023

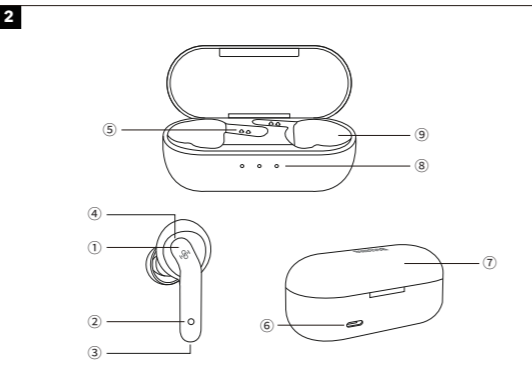
### PACKAGE CONTENTS (Fig. 1)



- 1 Boltune ANC True Wireless Stereo Earbuds (BT-BH023)
- 2 6 x Ear Tips (two are equipped on the earbuds)
- 3 1 x USB-C Charging Cable
- 4 1 x User Guide
- 5 1 x Quick Start Guide

01

### PRODUCT DIAGRAM (Fig. 2)



- 1 Multifunction Touch Control
- 2 LED Indicator
- 3 Microphone
- 4 Noise-cancelling Microphone
- 5 Charging Contacts
- 6 USB-C Charging Port
- 7 Charging Case
- 8 Charging Indicator
- 9 Charging Slot

02

### IMPORTANT SAFETY INSTRUCTIONS

Please read the instructions thoroughly before using this product and retain it for future reference.

#### Hearing Safety

- Do not wear earbuds with high volume for a long time to avoid damaging your hearing.
  - Set the earbuds to low volume before you put them on, then increase the volume gradually as per your preference.
  - Do not set volume too high to stay aware of your surroundings.
  - Please refer to local laws and regulations if you want to answer phone calls via this device during driving.
  - For your safety, avoid distraction from music or phone calls when you are driving or doing other activities with potential dangers.
- Warning: Please set the volume to proper level to avoid hearing damages.

#### Caution

- Do not expose this product to high temperatures.
- Do not immerse the earbuds into water or expose them to humidity for a long time.
- Do not clean the product with detergent containing alcohol, ammonia, benzene or abrasives.
- Avoid dropping.
- Place the earbuds back into the charging case when not in use and keep it away from children and pets to avoid choking hazard.
- Unauthorized disassembly of any parts of this product is forbidden, which may cause fire hazard, warranty voidance, and/or property loss.

03

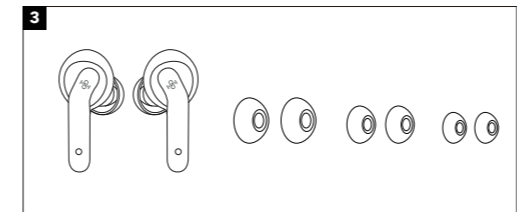
- Close attention is needed when using near children.
- Keep the charging case away from water, rain or any other liquid.
- Don't use the product in thunderstorm to avoid malfunction or electric shock.
- Always ask a professional technician or authorized personnel for repair.

**!** This product contains lithium battery. Never expose it to excessive heat such as direct sunlight or fire to avoid explosion.

### HOW TO WEAR

#### Choose the Right Tips (Fig. 3)

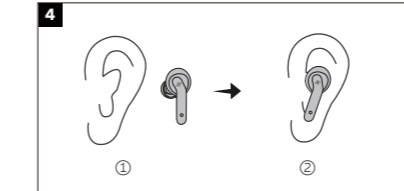
Ear tips with different sizes are included in the package, try all sizes and choose the ones fitting you best.



04

#### Wear the Earbuds (Fig. 4)

Please wear the earbuds as shown below.



Pictures only for reference.

#### Bluetooth Caution

- When the device is connected wirelessly to another device, place the two devices close to each other to achieve their normal functionalities and avoid possible signal interference.
- When using a wireless connection, make sure there are no obstacles between the two devices. Obstacles including walls and fences may shorten the effective range.
- The maximum effective Bluetooth range may vary with the environmental circumstances.

### USING YOUR EARBUDS

#### Charging

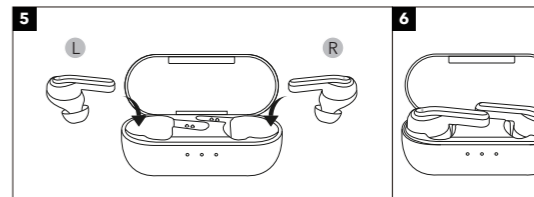
##### Charging the Earbuds

1. Put the earbuds into the charging case as per the L (left) and R (right) marks (Fig. 5).
2. Cover the lid and charging will start automatically (Fig. 6).

05

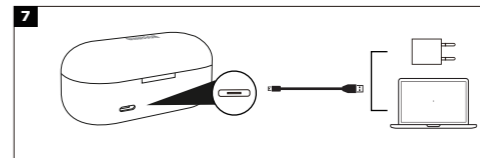
#### Note:

- Please fully charge the earbuds when using them for the first time.
- When battery is low, a "Battery low" voice prompt will be heard (if you are wearing the earbuds). Please charge it in time or the earbuds will turn off automatically around 10 minutes later.
- Charge the earbuds at least once every 3 months when not using for a long time.



#### Charging the Charging Case

1. Connect the charging case with any USB charging adapter or active computer USB port (Fig. 7).
  2. The charging indicators will light up progressively.
- Note:** Unplug the charging cable (timely) when fully charged.



06

**Boltune**  
www.boltune.net

BT-BH023\_V1.2\_EN

**NORTH AMERICA**  
E-mail: support@boltune.net

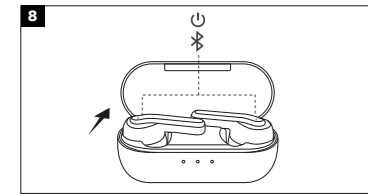
#### MANUFACTURER

Shenzhen NearbyExpress Technology Development Co.,Ltd.  
Address: Floor 7, Building E, Galaxy World Phase II, Shenzhen, China



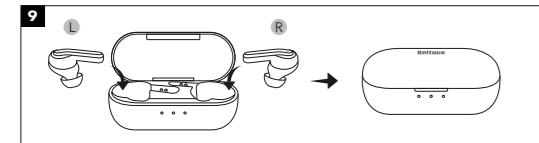
### Power On (Fig. 8)

Uncover the lid and they will power on automatically.



### Power Off (Fig. 9)

Put the earbuds into the charging case and close the lid, they will turn off automatically.



### Pairing

- You can use one earbud or both earbuds as per your preference. Please refer to the corresponding pairing instructions.
- Before pairing, please turn off other Bluetooth devices and place the device to be connected close to the earbuds.

07

### Couple Earbuds Mode

- Uncover the lid and take out both earbuds. They will connect with each other automatically. The LED indicators on both earbuds will flash white indicating the earbuds are in pairing mode now.
- Turn on the Bluetooth function on your device and search for nearby devices. Find "Boltune BT-BH023" in the searching results, tap on the name to connect.
- Once connected, the LED indicators on both earbuds will flash white slowly.

#### Note:

- It is not recommended to wear the two earbuds on different people. If necessary, please keep the two earbuds close to each other in couple earbuds mode.

### Single Earbud Mode

- Pair both earbuds with your device in Couple Earbuds Mode before using in Single Earbud Mode.
- Take out one earbud from the charging case and make sure the other is placed in the charging case with the lid covered.
- You can freely use the single (left or right) earbud now.

#### Note:

If you want to change to couple mode, simply take out the other earbud from the charging case, they will pair with each other automatically.

### Clear Pairing List

If you failed to pair your device with the earbuds, please clear the pairing history as instructed below:

08

- If you have paired your device with the earbuds before, remove "Boltune BT-BH023" from the Bluetooth device list.
- Take out one of the earbuds and make sure the other is placed in the charging case with the lid covered. In the first 10 seconds, press and hold the Multifunction Touch Control for 10 seconds until the LED indicator flashes white three times. The pairing history is then cleared with the earbud off.
- Take out the other earbud. In the first 10 seconds, press and hold its Multifunction Touch Control for 10 seconds until the LED indicator flashes white three times. The pairing history is then cleared with the earbud off.
- Put both earbuds back into the charging case, close the lid, then uncover it to pair with your Bluetooth® device as instructed in "Pairing" section.

#### Note:

If you want to pair the earbuds with another device when you have already paired them with a device, deactivate the Bluetooth function on the paired device or remove "Boltune BT-BH023" from its Bluetooth list. Restore the earbuds to factory settings as instructed above if pairing failed.

### OPERATION AND FUNCTIONS

Function	Operation	Voice Prompt
Play / Pause	Tap the Touch Control on either of the earbuds twice	/
Volume +	Tap the Touch Control on the right earbud	Toots when highest setting is reached
Volume -	Tap the Touch Control on the left earbud	/
Next Track	Tap the Touch Control on the right earbud three times	/

09

Previous Track	Tap the Touch Control on the left earbud three times	/
Answer Phone Call	Tap the Touch Control on either of the earbuds once	/
Hang Up Phone Call	Tap and hold the Touch Control on either of the earbuds for 2 seconds	/
Decline an Incoming Call	Tap and hold the Touch Control on either of the earbuds for 2 seconds	Call rejected
Turn On / Off ANC Function	Only available when in pairing mode or already paired in Couple Earbuds Mode: Tap and hold the Touch Control on the left earbud for 2 seconds	Toot
Turn On / Off Voice Control	Couple Earbuds Mode: Tap and hold the Touch Control on the right earbud for 2 seconds Single Earbud Mode: Tap and hold the Touch Control on the left earbud for 2 seconds	Toot
Clear Pairing List	Refer to the "Clear Pairing List" section	/
Go into Pairing Mode	Refer to the "Pairing" section	Pairing
Successfully paired with your device	/	Connected
Bluetooth out of Range / Failed to pair with your device	/	Disconnected

**Note:** Only when you are wearing the earbuds can you hear the voice prompt.

10

### CLEANING AND MAINTENANCE

- Clean the earbuds and the charging case on a regular basis.
- Use dry and soft cotton cloth to wipe the unit.
- Keep away from sharp objects to avoid scratches.
- Put the unit in a dry and shady place if it is to be idle for a long time.
- Do not clean the product with detergent or chemicals.

### TROUBLESHOOTING

No.	Problem	Solution
1	Failed to turn on the earbuds	Earbuds low battery, please charge them
2	Failed to charge the earbuds	<ul style="list-style-type: none"> <li>Place the earbuds into the charging case properly</li> <li>Make sure the charging case is fully charged</li> </ul>
3	Can't charge the charging case	Make sure the charging cable is intact and plugged in properly
4	Can't find "Boltune BT-BH023" in the Bluetooth device list	<p>The earbuds reconnected with previously paired device automatically:</p> <ul style="list-style-type: none"> <li>Deactivate the Bluetooth function of previously paired device or clear "Boltune BT-BH023" from its Bluetooth device list, and then search again</li> <li>Put the device to be connected close to the earbuds</li> </ul>

11

5	Failed to pair the earbuds with your device	<ul style="list-style-type: none"> <li>Turn on the device and activate its Bluetooth function before pairing</li> <li>Bring the earbuds into pairing mode as instructed in the "Pairing" section</li> </ul>
6	Failed to use a single earbud	As instructed in Single Earbud Mode, make sure both earbuds are paired with your device before using a single earbud.
7	No sound in one of the earbuds in couple earbuds mode	Place both earbuds back to the charging case then take them out, they will pair with each other automatically. If pairing failed, restore them back to the factory settings as instructed in the "Clear Pairing List" section
8	Poor sound quality	<ul style="list-style-type: none"> <li>Wear the earbuds properly and keep them close to each other.</li> <li>Place the connected device close to the earbuds or remove the obstacles between them</li> <li>Clear the debris on the earbuds</li> </ul>
9	Unstable connection	<ul style="list-style-type: none"> <li>The effective distance may shorten with obstacles in the way</li> <li>Turn off other Bluetooth devices to decrease the interference</li> </ul>
10	Can't hear the other party during a phone call	Set the volume to higher level

12

11	The other party can't hear your voice during a phone call	Free the built-in microphone of any covers
12	Touch Control of the earbuds is unresponsive	Place the two earbuds into the charging case and cover the lid, disconnect the Bluetooth connection. Uncover the lid to turn on the earbuds and pair again.

### WARRANTY AND SERVICE

If any problems occur, please contact the Boltune Customer Care Centre via the contact information listed in this User Guide.



The Bluetooth® word mark and logos are registered trademarks owned by the Bluetooth SIG, Inc. and any use of such marks by Sunvalleytek International Inc. is under license. Other trademarks and trade names are those of their respective owners.

**NOTE:** This equipment has been tested and found to comply with the limits for a Class B digital device, pursuant to part 15 of the FCC Rules. These limits are designed to provide reasonable protection against harmful interference in a residential installation. This equipment generates uses and can radiate radio frequency energy and, if not installed and used in accordance with the instructions, may cause harmful interference to radio communications. However, there is no guarantee that interference will not occur in a particular installation. If this equipment does cause harmful interference to radio or television reception, which can be determined by turning the equipment off and on, the user is encouraged to try to correct the interference by one or

13

- more of the following measures:
- Reorient or relocate the receiving antenna.
  - Increase the separation between the equipment and receiver.
  - Connect the equipment into an outlet on a circuit different from that to which the receiver is connected.
  - Consult the dealer or an experienced radio/TV technician for help
- Changes or modifications not expressly approved by the party responsible for compliance could void the user's authority to operate the equipment. This device complies with Part 15 of the FCC Rules. Operation is subject to the following two conditions:
- this device may not cause harmful interference, and
  - this device must accept any interference received, including interference that may cause undesired operation.



### WEEE Compliance

Correct Disposal of This Product (Waste Electrical & Electronic Equipment) (Applicable in countries with separate collection systems)  
This marking on the product, accessories or literature indicates that the product and its electronic accessories should not be disposed of with other household waste at the end of their working life. To prevent possible harm to the environment or human health from uncontrolled waste disposal, please separate these items from other types of waste and recycle them responsibly to promote the sustainable reuse of material resources. Household users should contact either the retailer where they purchased this product, or their local government office, for details of where and how they can take these items for environmentally safe recycling. Business users should contact their supplier and check the terms and conditions of the purchase contract. This product and its electronic accessories should not be mixed with other commercial wastes for disposal.

14