



Model: AJ-ADA019 Pro
Anjou Aroma Diffuser
User Guide



For your safety, please read and follow all instructions

This product is a household electrical appliance. This product is not intended for use as interior room lighting. This product can be used by children and persons with reduced physical capacity or mental capabilities or lack of experience and knowledge if they have been given supervision or instruction concerning use of the appliance in a safe way and understand the hazards involved.

IMPORTANT SAFEGUARDS

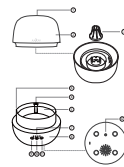
1. Keep the essential oils out of reach of children. Do not install or use within the reach of children or pets. Children shall not play with the appliance. Cleaning and user maintenance shall not be undertaken by children without supervision.
2. Do not use this product for any other purpose than to emit and diffuse aroma.
3. Use the included power adapter only. Using the power adapter if the aroma diffuser is to be able to ring time.
4. Never attempt to insert pins, wires, or other foreign objects into the mist diffuser outlet or seams / gaps of the product.
5. Please fully extend the power cord and check its integrity. Do not use this product if the AC adapter power cord or plug becomes damaged or if the plug does not sit firmly in the electrical outlet socket.
6. Do not damage the AC adapter power cord, bend the cord forcefully,

01

- pull or hold the cord. Do not allow the cord to come close to hot components, and do not put heavy items on top of the AC adapter cord. Do not grasp the cord between other objects or attempt to modify the cord in any way.
7. Do not attempt to insert / remove the AC adapter with wet hands.
 8. Do not submerge or pour / splash water on this product or its AC adapter. Do not use or store in locations subject to high humidity.
 9. Do not block the mist diffuser outlet when the unit is on.
 10. Do not remove or tilt the product when it is in operation. Water or essential oil may spill causing damage to the surrounding area or resulting in product malfunction.
 11. Do not touch the starter unit immediately after turning it off to avoid heat.
 12. Always hold this the diffuser unit by its lower section when lifting it to reuse.
 13. Do not use this product in the following locations. Doing so may result in product leakage, malfunction, or damage to surrounding areas. Do not place in a location that allows mist emitted from the product to come into direct contact with furniture, clothing, curtains, walls, documents or other paper goods, ceiling, etc.
 14. Do not place in a location under direct sunlight, locations subject to extreme heat such as heaters or sources of flames, or locations subject to direct wind such as near air conditioning.
 15. Do not place near electronic appliances, precision equipment, etc. Do not place on soft surfaces, vinyl / silk carpets, etc.
 16. Do not place on unstable / non-flat surfaces.
 17. After use, depress any water left in the water tank. Periodically clean the product and always keep it in a clean condition by following the methods described in this User's Manual in case of water and mold.
 18. Do not attempt to modify this product. Do not allow anyone other than a qualified service Anjou Diffuser technician to disassemble or repair this product.

02

Product Diagram



03

1. Nozzle
2. Tank Cover
3. Misting Cover
4. Essential Oil Tube
5. Water Tank
6. Drain Side
7. Timer Indicators
8. Base
9. Light Button
10. Timer Button
11. Power / Mist Button
12. Power Port

04

Package Contents

- 1 x Aroma Diffuser
- 1 x Power Adapter
- 1 x Cleaning Brush
- 1 x Essential Oil Tube
- 1 x User Guide
- 1 x Thank You Card

Specifications

Model	AJ-ADA019 Pro
Power Source	100 ~ 240V AC
Power	1.25W
Working Time	4h (High Mist) 8h (Low Mist)
Mist Output	30 ml / 3.0 fl. oz (High Mist) 60 ml / 2.0 fl. oz (Low Mist)
Water Tank Volume	200 ml / 7.05 fl. oz
Dimensions (Product)	3.4x4.6x
Wi-Fi	2.4GHz

How to Use

Caution

1. Please add water to the tank first, then add essential oils up to the marking on the tube or until dispensing starts. If there's no fragrance, the water will become may be off. Please add enough essential oil as instructed then.



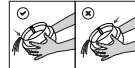
2. It is recommended to use purified or distilled water.
3. Cinnamon essential oil is of higher density and viscosity than that of water. When adding the cinnamon essential oil to the water, it will sink to the bottom. It is recommended that the essential oil be added directly on the water surface to accelerate diffusion.

Add and Drain Water

1. Remove the tank cover, add water into the tank no higher than the max water level. Add a few drops of essential oil into the tube until it spills out slightly. Put the tank cover back on.

05

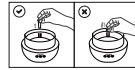
2. Drain excess water via the drain side if necessary



3. Clean the water tank with the included brush when gime builds up.

Note:

Never pour essential oils into the tube when there is no water inside the tank.



06

Operations and Functions

Connect to a power source. Once connected, the diffuser will enter standby mode. Please make sure there is enough water inside the tank.

Functions	Operations
High Mist	Press ⊕ once to enter the default high mist mode. The buzzer will sound and the ON indicator will light up.
Low Mist	Press ⊕ again to enter low mist mode with one buzzer sound.
Switch between High & Low Mist	Press ⊕ again to toggle High Mist. Switch between the two modes with each press.
Mist OFF	Press and hold ⊕ for 2 seconds to turn off the mist.
Timer Setting	When the unit is on, press ⊕ for 1 / 2 / 4 hours timer. The corresponding indicator will light up.
Timer OFF	When the timer is on, press and hold ⊕ for 2 seconds to turn off the timer at any time.
Automatic Color Changing	Automatic Color Changing mode where 7 colors will be cycled through.
Light Mode Setting	Select Color. Press ⊕ to stay on the current color. Keep pressing to cycle through different colors.

07

Low Water Protection

The diffuser will turn off automatically when water inside the tank has been depleted. Once water is added back into the tank, the diffuser will resume standby mode.

App Installation and Wi-Fi Pairing

1. Search "Anjou Diffuser" in the "App Store" for iOS devices or "Google Play" for Android devices, tap on the name to download.
2. Once installed, click "Go to sign up" to create your account via phone number or email address. You can also log in with a third party (QQ, Wechat or Facebook) account.



08

3. Login your account and add your device (support 2.4G Wi-Fi network only).
- 4) Click "Add Device" to choose the device type.



09

- 4) Press and hold the Aroma and Mist / Power Buttons simultaneously for 3 seconds to enter Wi-Fi pairing mode with the light flashing white twice every second.



10

- 4) Select 2.4GHz Wi-Fi and enter the password to start pairing. You can also click to see how to distinguish between 2.4GHz and 5GHz Wi-Fi network. Pairing will finish within 120 seconds. Once successfully connected, the light will stay solid green for 3 seconds and turn off.



11

- 4) You will be directed to Device Management interface. For first time installation after adding the device, there will be an onscreen guideline for quick start of the APP.



12



E-mail: support@anjou.com
MANUFACTURER
 Manufacturer: Shenzhen Neatly Express Technology Development Co., Ltd.
 Address: Floor 7, Building E, Galaxy World Phase 3, Shenzhen, China



