

User Manual

Product Name : SPX Sandpiper Digital Display

Brand Name: Connectpoint

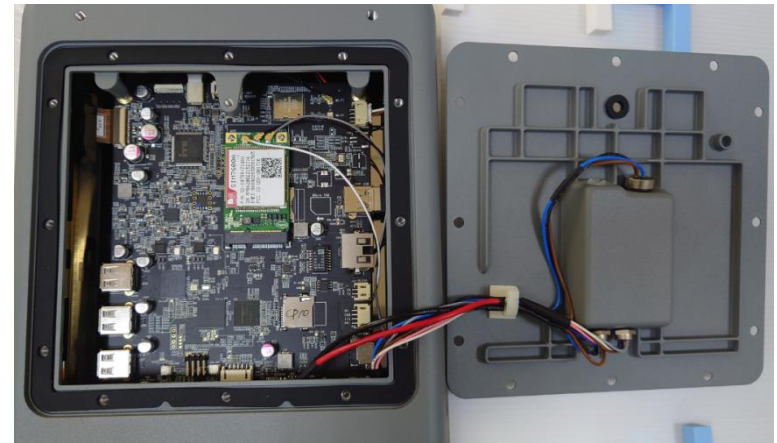
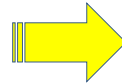
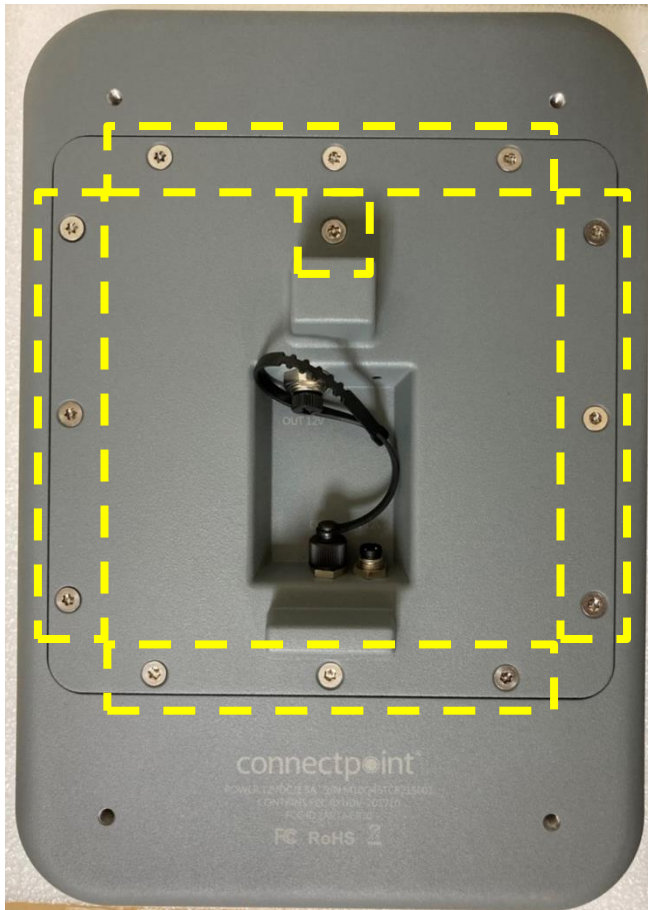
CP10

Cautions

The device is installed at fixed location via trained professionals and needs to remain at least 20 centimeters away from human contact.

Open door for SIM card installation

Remove 13 pcs T15 screws on Service Door

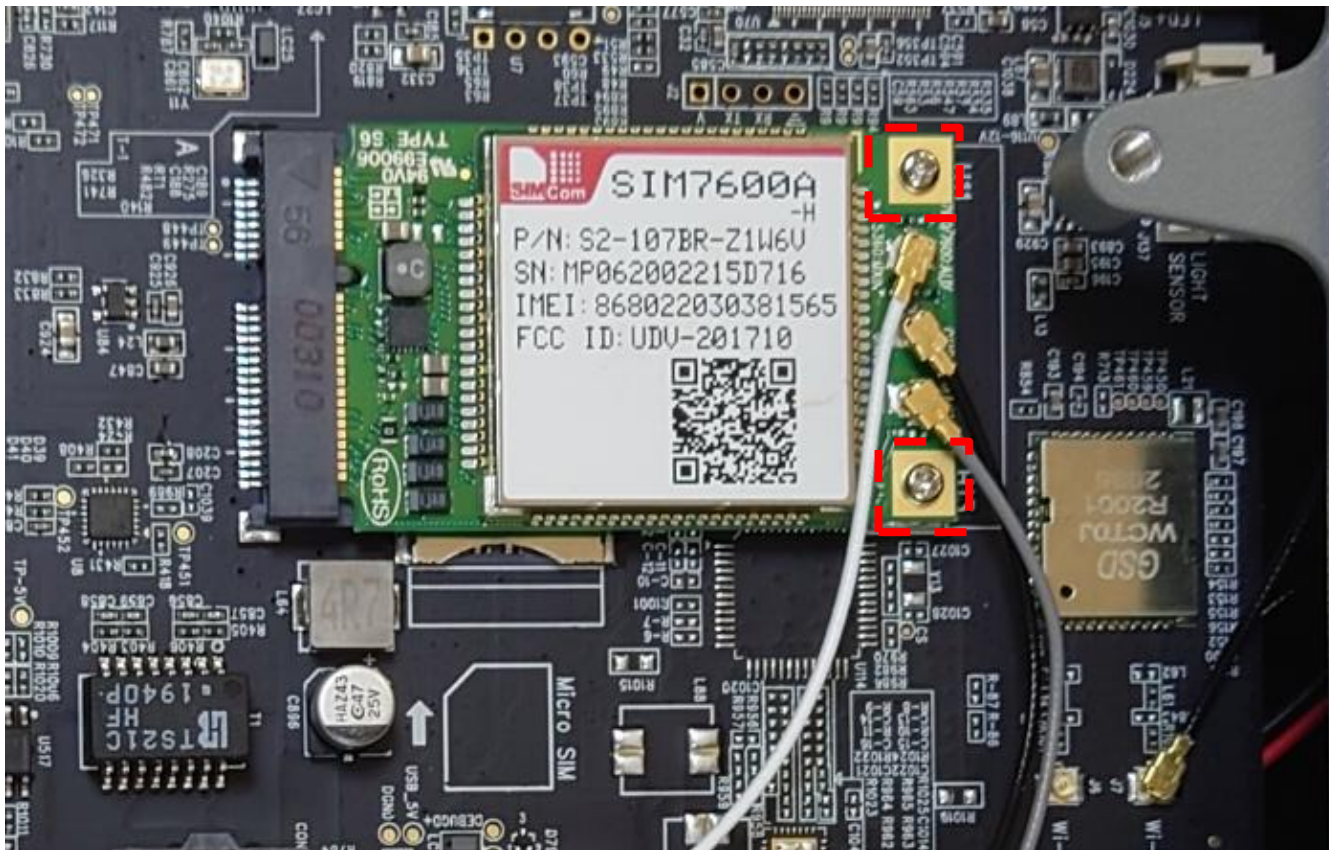


Screw driver: T15
(Six-Lobe Tamper)

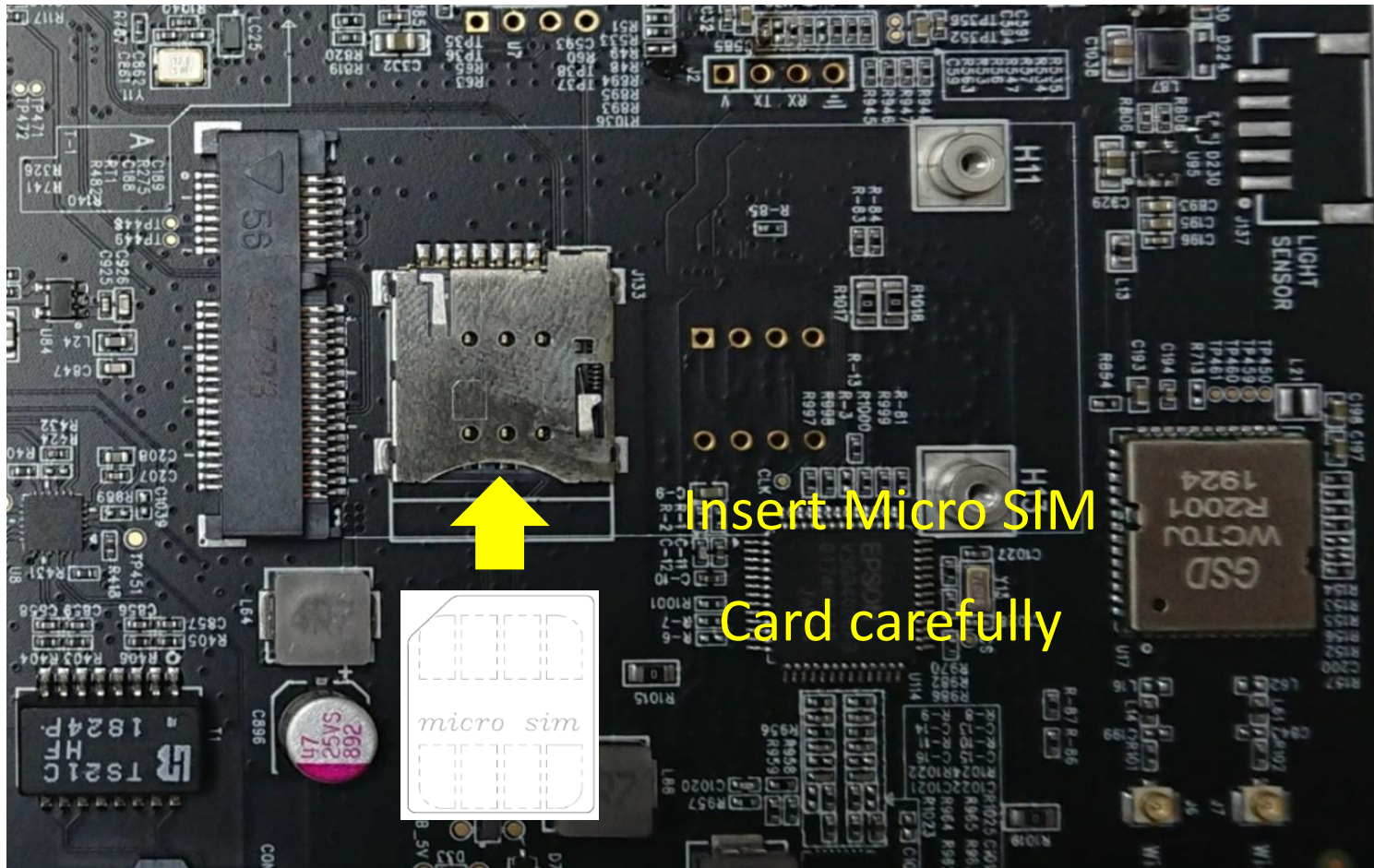


Install SIM Card-1

1. Remove the 2 screws holding the modem module (SIM7600A) -- Red Block (Screw Driver :Philips) ⊕
2. Lift and slide out the modem module to expose the micro-SIM slot. You may leave the antenna cables attached. If needed, gently set the module to the side.

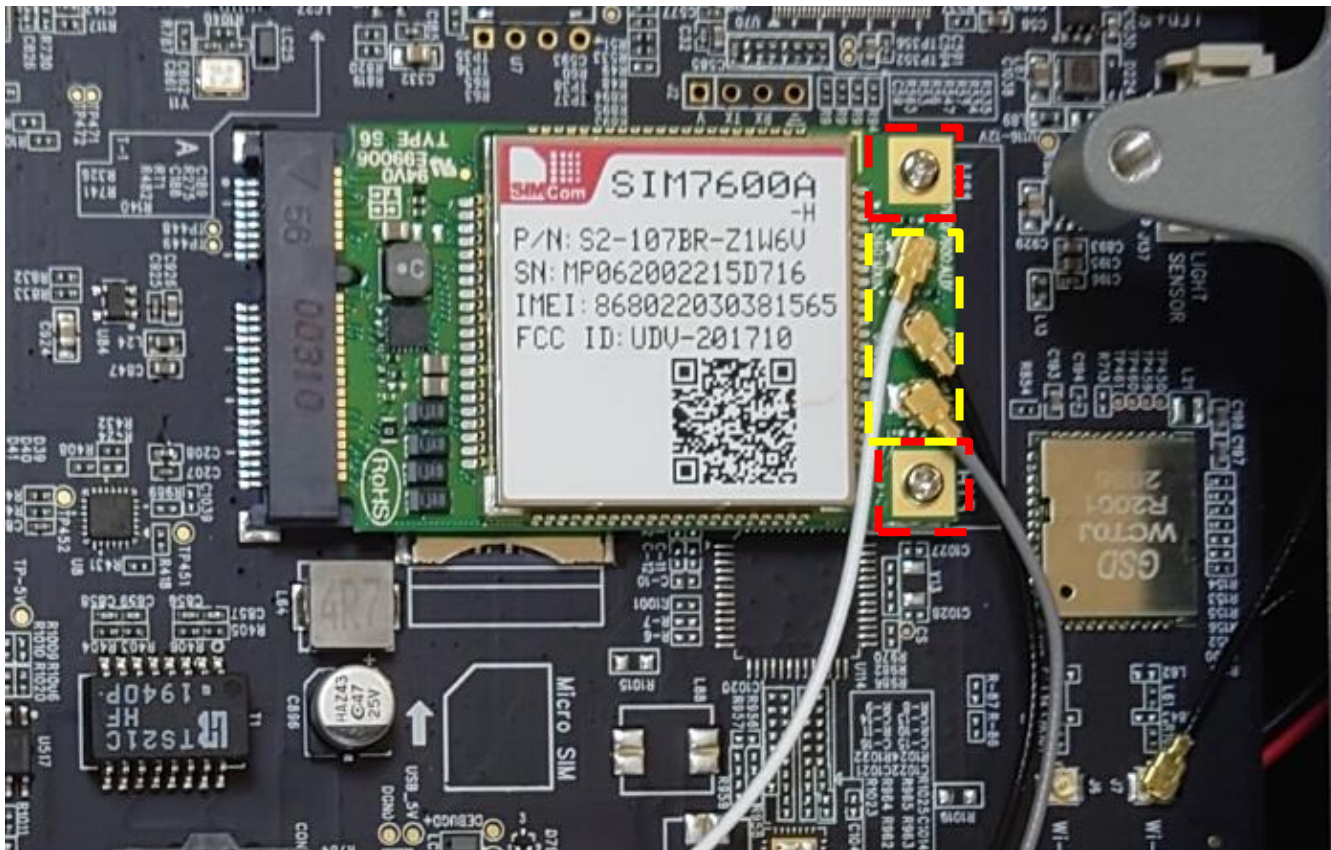


Install SIM Card-2




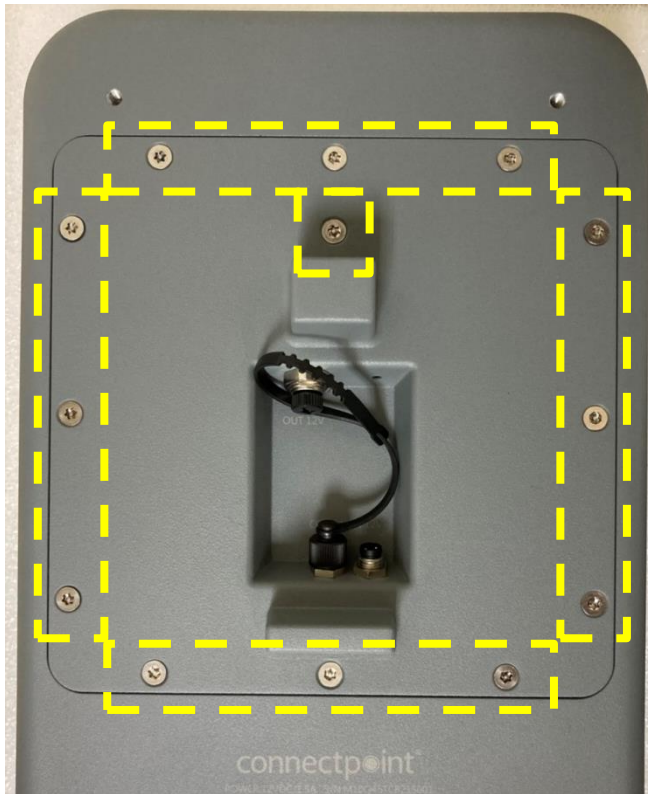
Re-connect All Antenna

1. Slide modem module into the connector and assemble the 2 screws. Recommended torque: **2 +/- 0.4 kgf-cm (28 +/- 5 ozf-in)** (Screw Driver :Philips) **+**
2. Confirm that the antenna connections remain fully seated. For reference, see the yellow block and the Antenna Cable Color Definition below.



Close door

1. Check the gasket seal to ensure it is clean and that there is no debris. Check the mating cover as well
2. Set the cover in place. It should rest easily on the seal, with all the wiring inside the housing
3. Tighten all 13 screws evenly, so that the seal is not damaged. Start with the center four screws, finish with the outer screws, and make two passes: first, gently snug; second, finish. Recommended torque: **4 +/- 0.5 kgf-cm (56 +/- 7 ozf-in)** – (Screw Driver Six-Lobe Tamper) 



Connect DC Power



Power on CP10 & Check Screen



Operation

- Once the installation is complete at site and once the device is powered on, all operation will be control and executed by private cloud from remote. No other setting is needed.

- The input power device shall be a R/C external power supply and output rating: 12Vdc, 4A min, LPS. A power cord must be connected to a socket-outlet with earthing connection.

FCC Warning

- 15.19
- This device complies with Part 15 of the FCC Rules. Operation is subject to the following two conditions: (1) this device may not cause harmful interference, and (2) this device must accept any interference received, including interference that may cause undesired operation.
- 15.105
- This equipment has been tested and found to comply with the limits for a Class B digital device, pursuant to part 15 of the FCC Rules. These limits are designed to provide reasonable protection against harmful interference in a residential installation. This equipment generates, uses and can radiate radio frequency energy and, if not installed and used in accordance with the instructions, may cause harmful interference to radio communications. However, there is no guarantee that interference will not occur in a particular installation. If this equipment does cause harmful interference to radio or television reception, which can be determined by turning the equipment off and on, the user is encouraged to try to correct the interference by one or more of the following measures:
 - —Reorient or relocate the receiving antenna.
 - —Increase the separation between the equipment and receiver.
 - —Connect the equipment into an outlet on a circuit different from that to which the receiver is connected.
 - —Consult the dealer or an experienced radio/TV technician for help.
- 15.21
- Any changes or modifications not expressly approved by the party responsible for compliance could void the authority to operate equipment.
- This device and its antenna must not be co-located or operating in conjunction with any other antenna or transmitter.
- For product available in the USA/Canada market, only channel 1~11 can be operated. Selection of other channels is not possible
- FCC RF Radiation Exposure Statement:
- This equipment complies with FCC radiation exposure limits set forth for an uncontrolled environment. This equipment should be installed and operated with minimum distance 20cm between the radiator & your body.