

深圳市亿圣邦科技有限公司
Shenzhen Yi shengbang Technology Co., Ltd
样品承认书

SPECIFICATION FOR APPROVAL

公司名称 (客户填写): 深圳市艾普达科技有限公司

物料代码 (客户填写):

规格型号 (客户填写): MPC08S5YN

承认日期 (客户填写):

供应商名称 (SLK 填写): 深圳市亿圣邦科技有限公司

供应商规格型号 (SLK 填写): WIFIMAIN:SLK-APD-2520D-R-50IV-B

WIFIAUX:SLK-APD-2025D-R-70IV-G

承认签章

供应商承认 (SLK 填写栏)

深圳市艾普达科技有限公司

工程师

审核

批准

工程师

审核

批准

陈仕联

黄震

林美财

盖章签署

盖章签署

日期

2022-08-30

日期

批示: 接受 有条件接受

备注 (客户填写):

Address: 101, Building C, Qianwan Hard Technology Industrial Park,
Bao'an District, Shenzhen, China

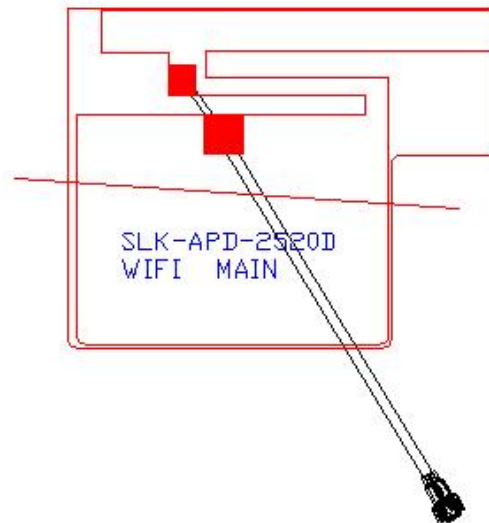
Phone: +86-18025305599

WIFIMAIN Antenna (2520D)

1. Explanation of Product number :

S L K - A P D - 2 5 2 0 D - R - 5 0 I V - B

1 2 3 4 5



Product Code:

(1) Customer:

APD: 艾普达

(2) Project:

2520D: SLK-2520D (WIFIMAIN antenna)

(3) Welding Position

R:Ring

(4) Cable Length:

50IV: 50*0.81MM四代端子

(5)Cable Color

B: Black

2. Features

*Stable and reliable in performances

*Compact size

*RoHS compliance

3. Applications

- * IEEE502.11 (a/b/g/n)
- * Hand-held devices when WIFI (502.11 a/b/g/n) functions are needed

4. Description

Holy bond's FPC antenna series are specially designed for WIFI (502.11 a/b/g/n) applications. Based on Holy bond's proprietary design and processes, this FPC antenna has excellent stability and sensitivity to consistently provide high signal reception efficiency.

5. Electrical Specifications

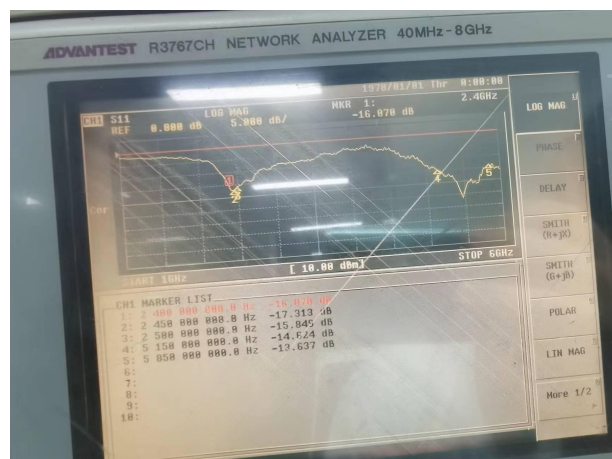
5-1

Characteristics	Specifications	Unit
Outline Dimensions	25.43x 20.09x 0.12	mm
Center Frequency	2.4-2.5-5.15-5.85	GHz
Bandwidth(under-10dB return loss)	130min	MHz
VSWR	3max	

5-2.

VSWR

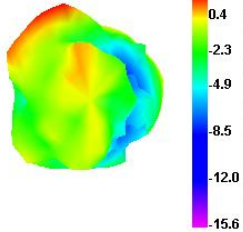
S11



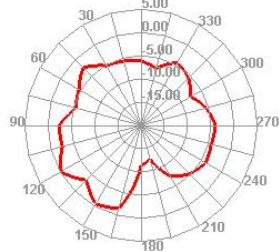
5-3.WIFI Antenna Gain/Efficiency/Radiation Pattern of 3D

Frequency (MHz)	Eff (%)	Eff (dB)	Gain (dB)
2400.00	20.14	-6.52	1.52
2410.00	21.56	-6.75	1.54
2420.00	22.35	-6.53	1.00
2430.00	19.85	-6.37	1.37
2440.00	21.38	-6.52	1.15
2450.00	21.56	-6.45	1.28
2460.00	21.54	-6.21	1.31
2470.00	21.62	-6.13	1.61
2480.00	20.36	-6.52	1.43
2490.00	22.58	-6.39	1.58
2500.00	19.85	-6.85	1.46
5100.00	35.21	-4.65	3.12
5150.00	34.25	-4.23	3.08
5200.00	36.52	-4.36	3.13
5250.00	38.54	-4.56	3.05
5300.00	37.85	-4.26	3.07
5350.00	36.52	-4.35	3.14
5400.00	38.95	-4.52	3.05
5450.00	39.45	-4.21	2.36
5500.00	38.23	-4.32	2.56
5550.00	40.23	-4.18	2.61
5600.00	41.35	-4.85	2.35
5650.00	37.52	-4.23	2.63
5700.00	35.23	-4.56	2.52
5750.00	38.52	-4.13	1.85
5800.00	38.25	-4.52	1.83
5850.00	35.53	-4.39	1.46

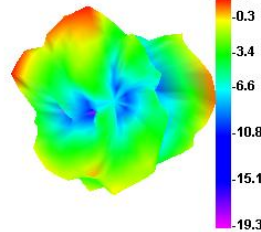
2450.000MHz



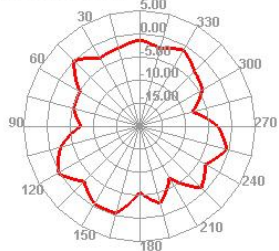
2450.000MHz H



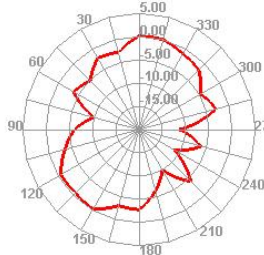
5850.000MHz



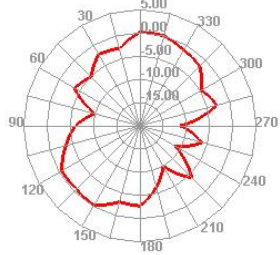
5850.000MHz H



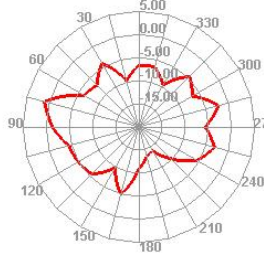
2450.000MHz E1



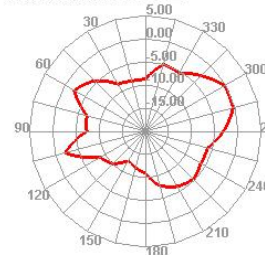
2450.000MHz E1



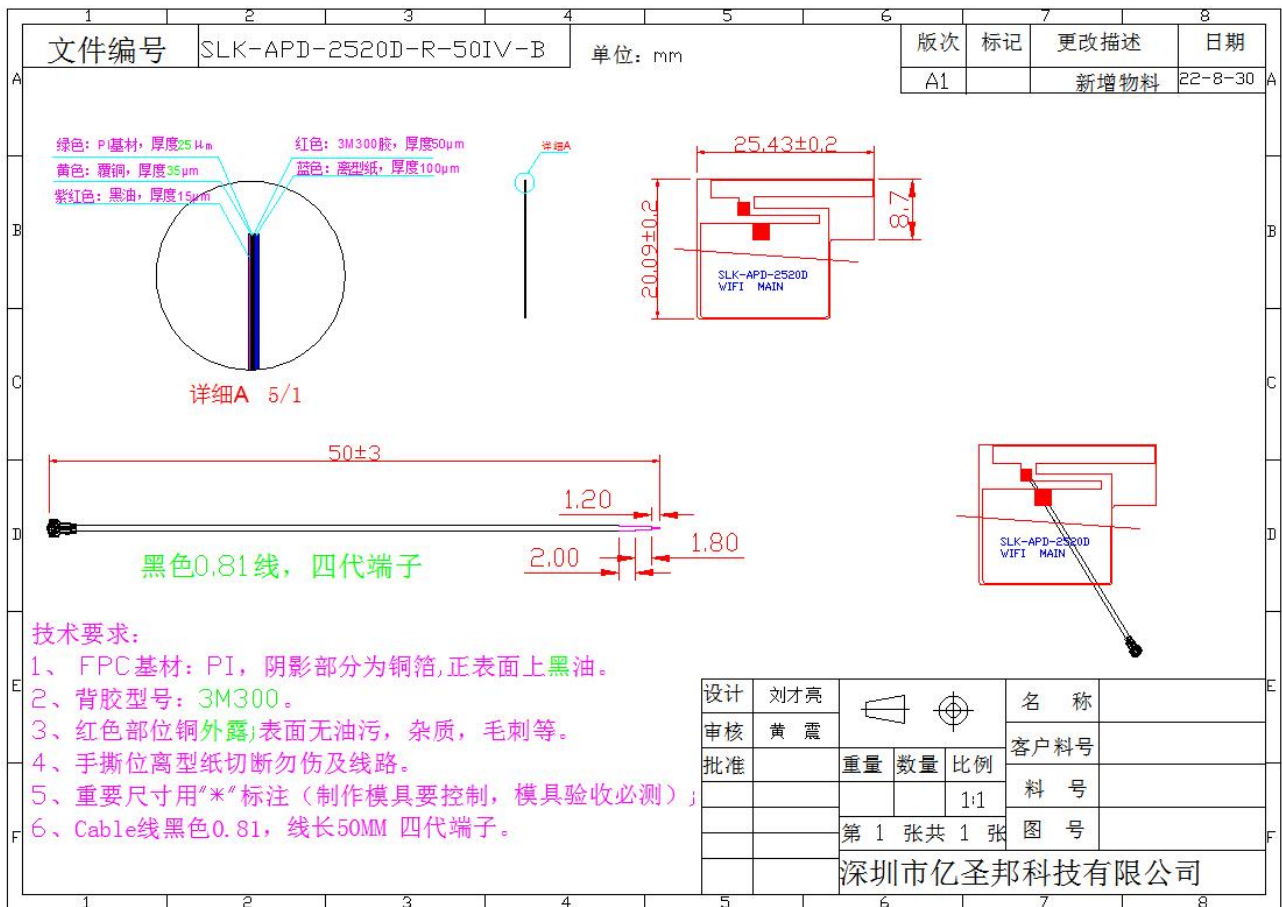
5850.000MHz E1



5850.000MHz E2



6. Antenna Dimensions (unit: mm)

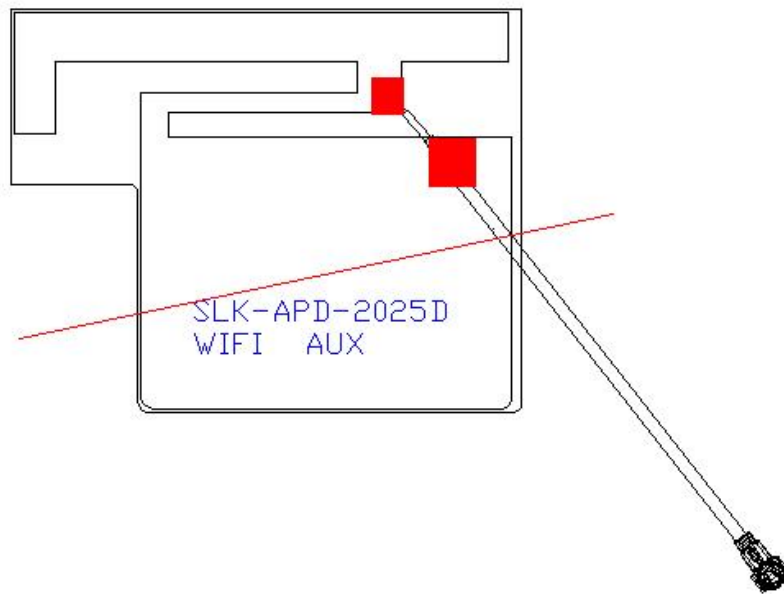


WIFIAUX Antenna (2025D)

1.Explanation of Product number :

S L K - A P D - 2 0 2 5 D - R - 7 0 I V - G

1 2 3 4 5



Product Code:

(1) Customer:

APD: 艾普达

(2) Project:

2025D: SLK-2025D (WIFIAUX antenna)

(3) Welding Position

R:Right

(4) Cable Length:

70IV: 70*0.81MM四代端子

(5)Cable Color

G: Gray

2. Features

*Stable and reliable in performances

*Compact size

*RoHS compliance

3. Applications

- * IEEE502.11 (a/b/g/n)
- * Hand-held devices when WIFI (502.11 a/b/g/n) functions are needed

4. Description

Holy bond's FPC antenna series are specially designed for WIFI (502.11 a/b/g/n) applications. Based on Holy bond's proprietary design and processes, this FPC antenna has excellent stability and sensitivity to consistently provide high signal reception efficiency.

5. Electrical Specifications

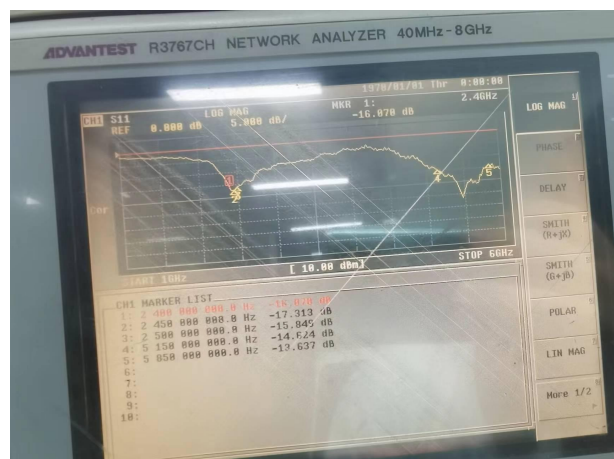
5-1

Characteristics	Specifications	Unit
Outline Dimensions	25.43x 20.09 x 0.12	mm
Center Frequency	2.4-2.5-5.15-5.85	GHz
Bandwidth(under-10dB return loss)	130min	MHz
VSWR	3max	

5-2.

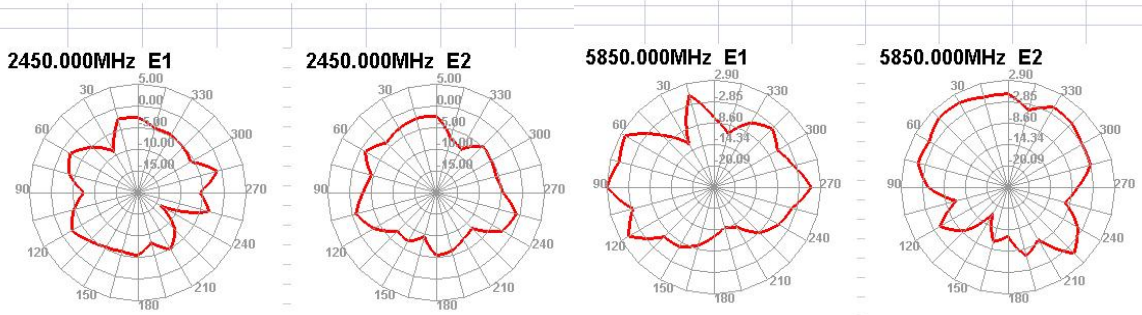
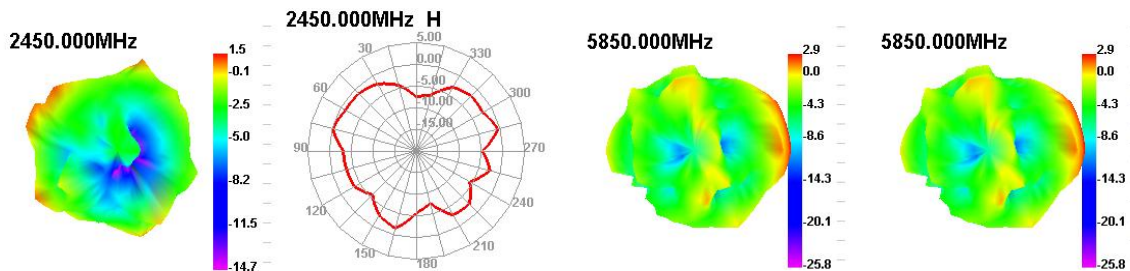
VSWR

S11

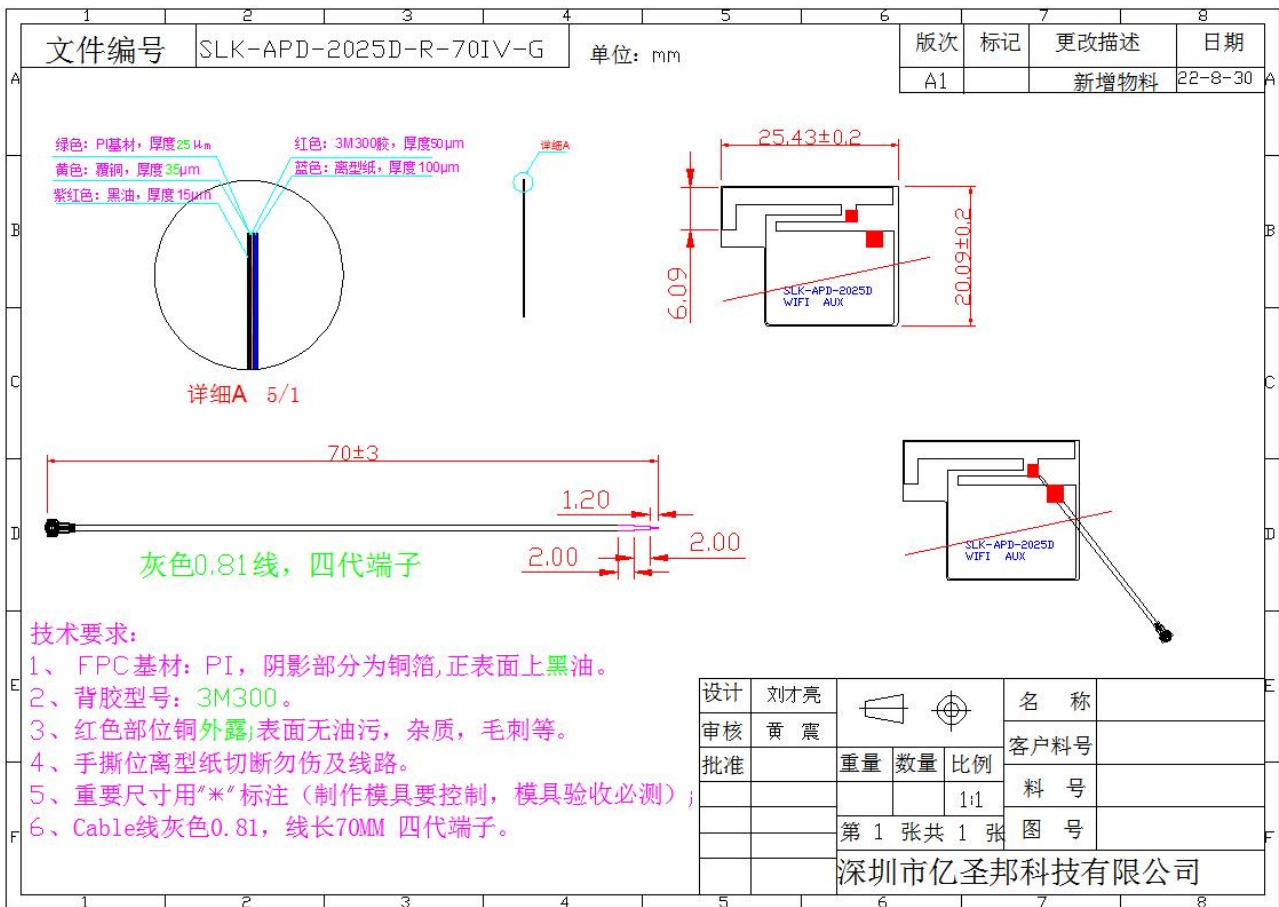


5-3.WIFI Antenna Gain/Efficiency/Radiation Pattern of 3D

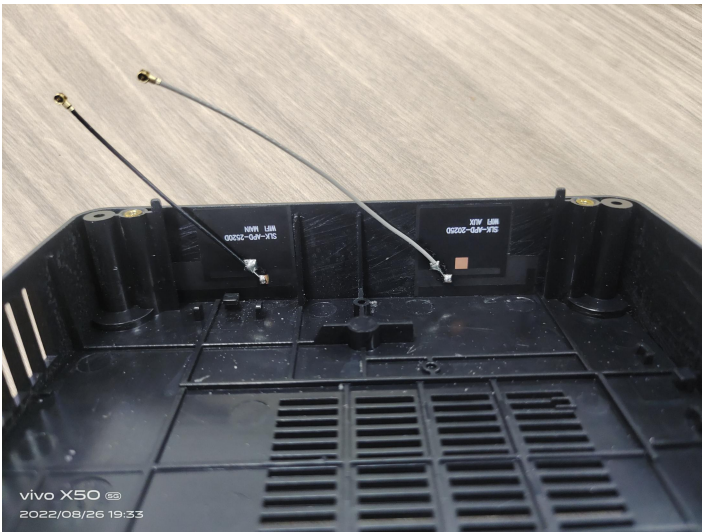
Passive Test for 2.4G&5G			
Frequency (MHz)	Eff (%)	Eff (dB)	Gain (dBi)
2400.00	20.14	-6.52	1.47
2410.00	21.56	-6.75	1.53
2420.00	22.35	-6.53	1.02
2430.00	19.85	-6.37	1.38
2440.00	21.38	-6.52	1.21
2450.00	21.56	-6.45	1.31
2460.00	21.54	-6.21	1.35
2470.00	21.62	-6.13	1.58
2480.00	20.36	-6.52	1.61
2490.00	22.58	-6.39	1.59
2500.00	19.85	-6.85	1.45
5100.00	35.21	-4.65	3.10
5150.00	34.25	-4.23	3.13
5200.00	36.52	-4.36	3.02
5250.00	38.54	-4.56	3.00
5300.00	37.85	-4.26	3.14
5350.00	36.52	-4.35	3.13
5400.00	38.95	-4.52	2.87
5450.00	39.45	-4.21	2.35
5500.00	38.23	-4.32	2.36
5550.00	40.23	-4.18	2.58
5600.00	41.35	-4.85	2.36
5650.00	37.52	-4.23	2.57
5700.00	35.23	-4.56	2.47
5750.00	38.52	-4.13	1.85
5800.00	38.25	-4.52	1.84
5850.00	35.53	-4.39	1.43



6. Antenna Dimensions (unit: mm)



7. Antenna Picture



WiFi 分集天线



WiFi 主天线