

Shenzhen Yi Sheng Bang technology Co., LTD
SPECIFICATION FOR APPROVAL

SPECIFICATION FOR APPROVAL

公司名称 (客户填写): 深圳市艾普达科技有限公司
物料代码 (客户填写): _____
规格型号 (客户填写): N1510S7YB
承认日期 (客户填写): _____
供应商名称 (SLK 填写): 深圳市亿圣邦科技有限公司
供应商名称 (SLK 填写): WIFI MAIN:SLK-APD-3311F1-R-430IV-B
WIFI AUX:SLK-APD-3311F2-L-280IV-G

承 认 签 章

| | | | | | |
|--|-----|-----|--------------|-----|-----|
| 供 应 商 承 认 | | | 深圳市艾普达科技有限公司 | | |
| 工 程 师 | 审 核 | 批 准 | 工 程 师 | 审 核 | 批 准 |
| 曾立文 | 黄 震 | 林美财 | | | |
| 盖章签署 | | | 盖章签署 | | |
| 日期 2023-06-12 | | | 日期 | | |
| 批示: <input type="checkbox"/> 接受 <input type="checkbox"/> 有条件接受 | | | | | |
| 备注 (客户填写): | | | | | |

Supplier name: Shenzhen Yishengbang Technology Co., LTD

Supplier Address: 2nd Floor, No. 5, Yinyuan Street, Jiaoyitang,
Tangxia Town, Dongguan City

Tel: 0769-82553115 Real: 0769-82553116

深圳市亿圣邦科技有限公司

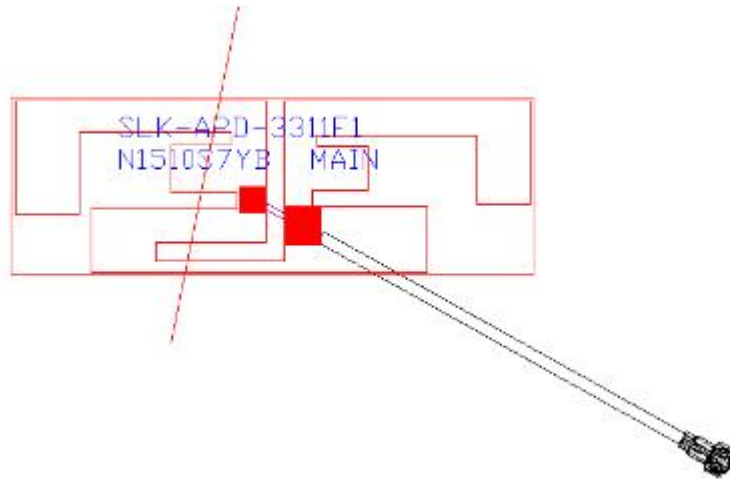
第 1 页

WIFI Antenna MAIN (3311F1)

1. Explanation of Product number :

S L K - A P D - 3 3 1 1 F 1 - R - 4 3 0 I V - B

1 2 3 4 5



Product Code:

(1) Customer:

APD:艾普达

(2) Project:

3311F1: SLK-APD-3311F1(WIFI antenna 2.4~2.5GHz 5~5.85GHz)

(3) Welding Position

R:Right

(4) Cable Length:

430IV:430*1.13MM四代端子

(5)Cable Color

B: Black

2. Features

*Stable and reliable in performances

*Compact size

*RoHS compliance

3. Applications

* IEEE802.11 (a/b/g/n)

* Hand-held devices when WIFI (802.11a/b/g/n) functions are needed

4. Description

Holy bond's External antenna series are specially designed for WIFI (802.11 a/b/g/n) applications. Based on Holy bond's proprietary design and processes, this External antenna has excellent stability and sensitivity to consistently provide high signal reception efficiency.

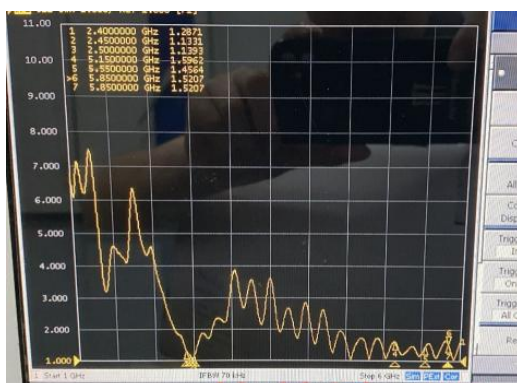
5. Electrical Specifications

5-1

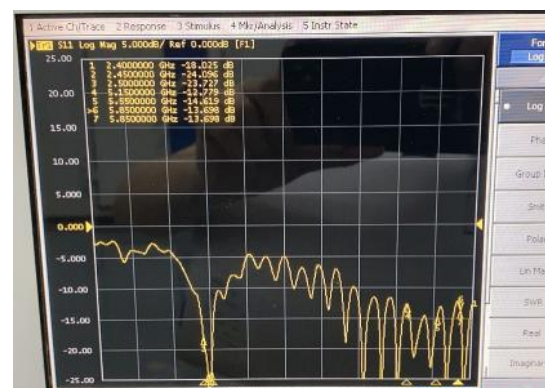
| Characteristics | Specifications | Unit |
|-----------------------------------|---------------------|----------|
| Outline Dimensions | 33.04*11.2*0.12 | mm |
| Bandwidth(under-10dB return loss) | 130min | MHz |
| VSWR | 3max | |
| Impedance | 50 | Ω |
| Polarization | Linear Polarization | |

5-2

VSWR



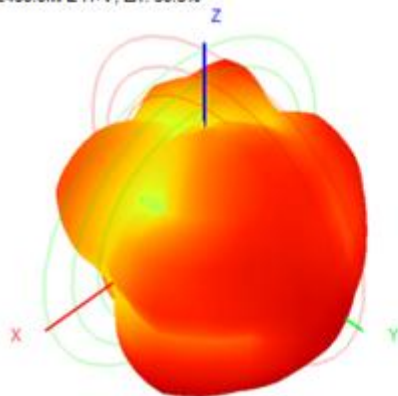
S11



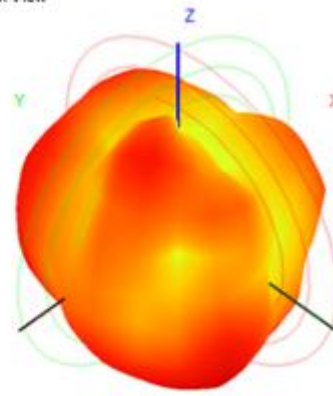
5-3.WIFI Antenna Gain/Efficiency/Radiation Pattern of 3D

| Frequency | Efficiency | Gain (dBi) | Efficiency (%) |
|-----------|------------|------------|----------------|
| 2400.0 | -2.91 | 2.34 | 51.21 |
| 2410.0 | -2.88 | 2.59 | 51.57 |
| 2420.0 | -3.14 | 2.65 | 48.53 |
| 2430.0 | -2.82 | 3.03 | 52.20 |
| 2440.0 | -2.86 | 3.44 | 51.77 |
| 2450.0 | -2.97 | 3.06 | 50.46 |
| 2460.0 | -3.04 | 3.33 | 49.70 |
| 2470.0 | -3.13 | 3.05 | 48.61 |
| 2480.0 | -3.07 | 3.30 | 49.28 |
| 2490.0 | -2.87 | 3.34 | 51.64 |
| 2500.0 | -3.03 | 2.66 | 49.72 |
| 5150.0 | -3.15 | 3.16 | 48.47 |
| 5350.0 | -3.02 | 4.10 | 49.93 |
| 5550.0 | -2.77 | 4.45 | 52.84 |
| 5650.0 | -2.92 | 3.87 | 51.01 |
| 5850.0 | -2.82 | 4.83 | 52.26 |

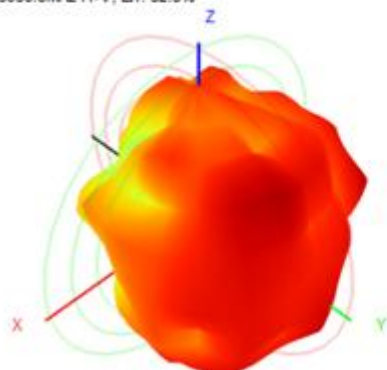
2450.0MHz H+V, Eff: 50.5%



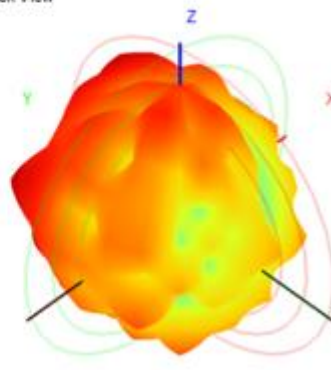
Back View



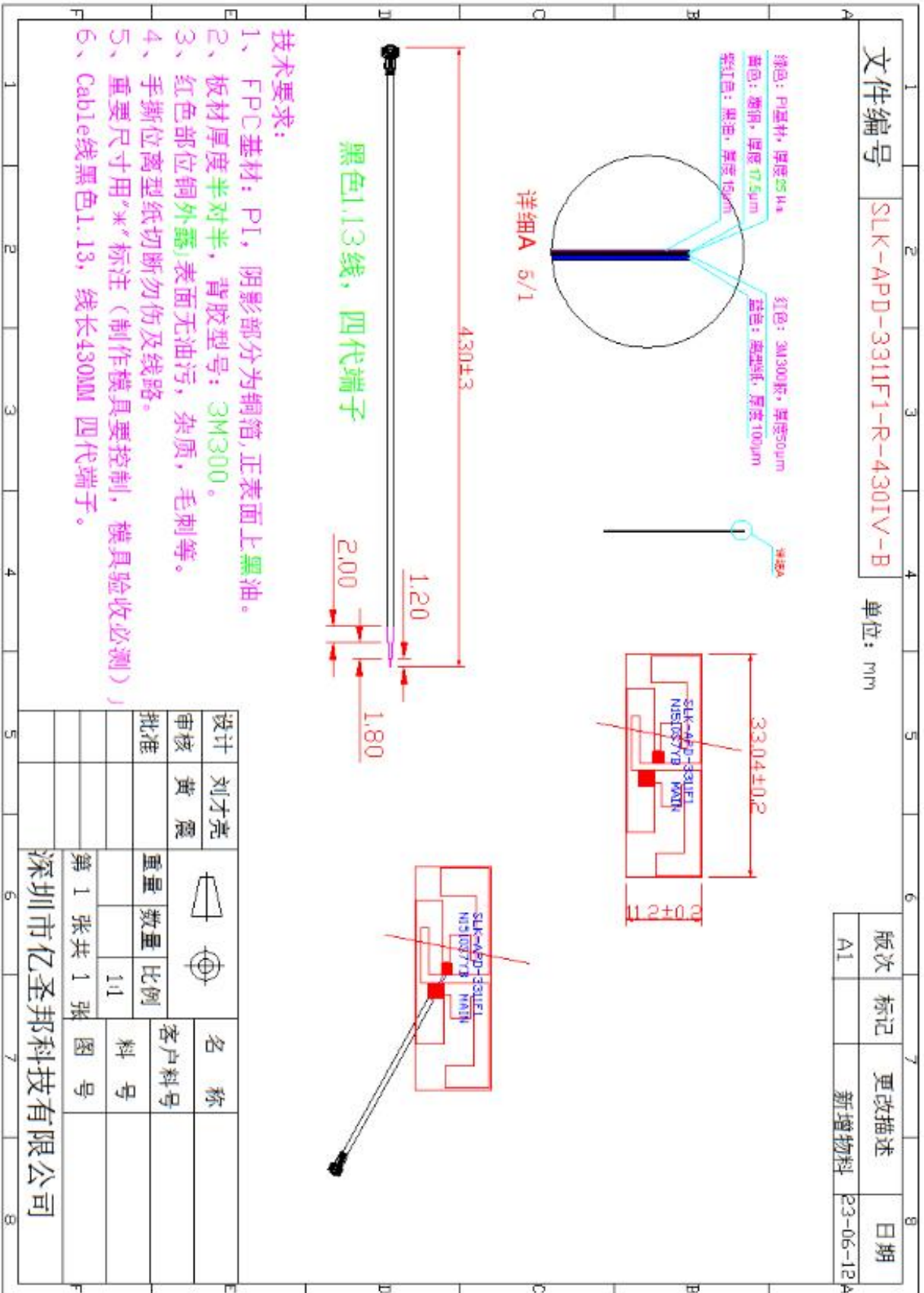
5850.0MHz H+V, Eff: 52.3%



Back View



6. Antenna Dimensions (unit: mm)

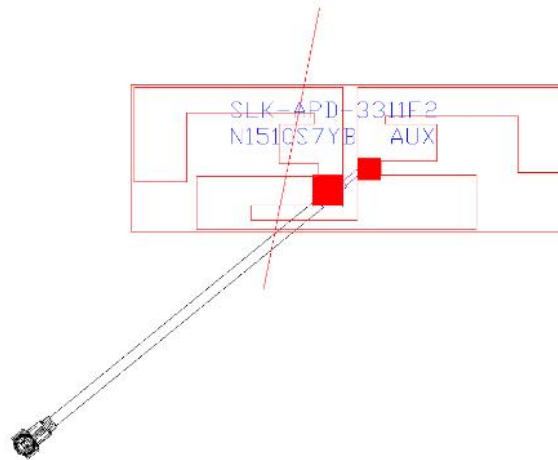


WIFI Antenna AUX(3311F2)

1. Explanation of Product number :

S L K - A P D - 3 3 1 1 F 2 - L - 2 8 0 I V - G

1 2 3 4 5



Product Code:

(1) Customer:

APD: 艾普达

(2) Project:

3311F2: SLK-APD-3311F2(WIFI antenna 2.4~2.5GHz 5~5.85GHz)

(3) Welding Position

L: Left

(4) Cable Length:

280IV: 280*1.13MM 四代端子

(5) Cable Color

G: Grey

2. Features

- *Stable and reliable in performances
- *Compact size
- *RoHS compliance

3. Applications

- * IEEE802.11 (a/b/g/n)
- * Hand-held devices when WIFI (802.11a/b/g/n) functions are needed

4. Description

Holy bond's External antenna series are specially designed for WIFI (802.11 a/b/g/n) applications. Based on Holy bond's proprietary design and processes, this External antenna has excellent stability and sensitivity to consistently provide high signal reception efficiency.

5. Electrical Specifications

5-1

| Characteristics | Specifications | Unit |
|-----------------------------------|---------------------|----------|
| Outline Dimensions | 33.04*11.2*0.12 | mm |
| Bandwidth(under-10dB return loss) | 130min | MHz |
| VSWR | 3max | |
| Impedance | 50 | Ω |
| Polarization | Linear Polarization | |

5-2

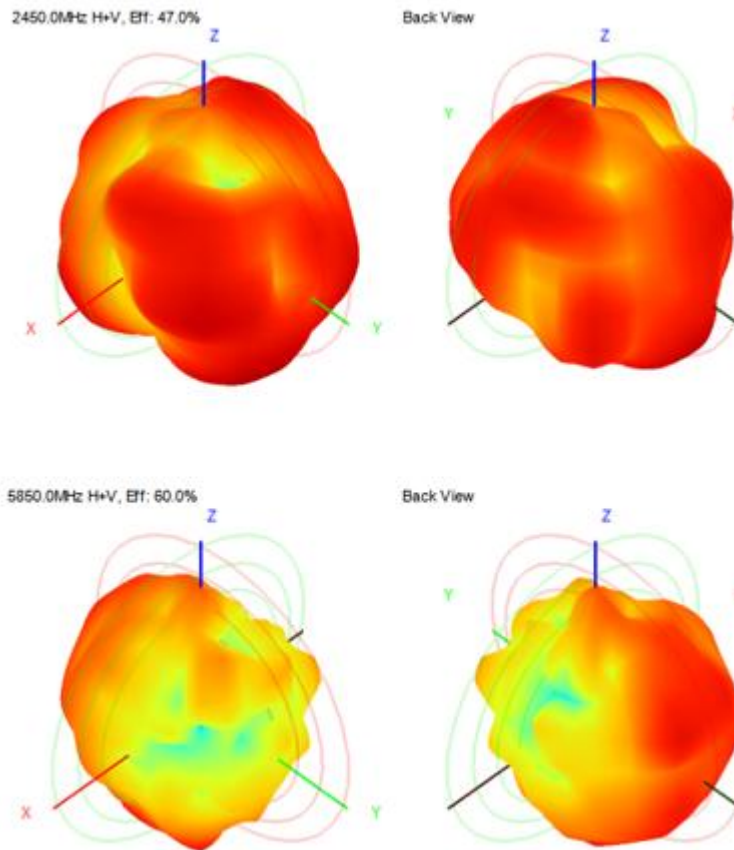
VSWR

S11

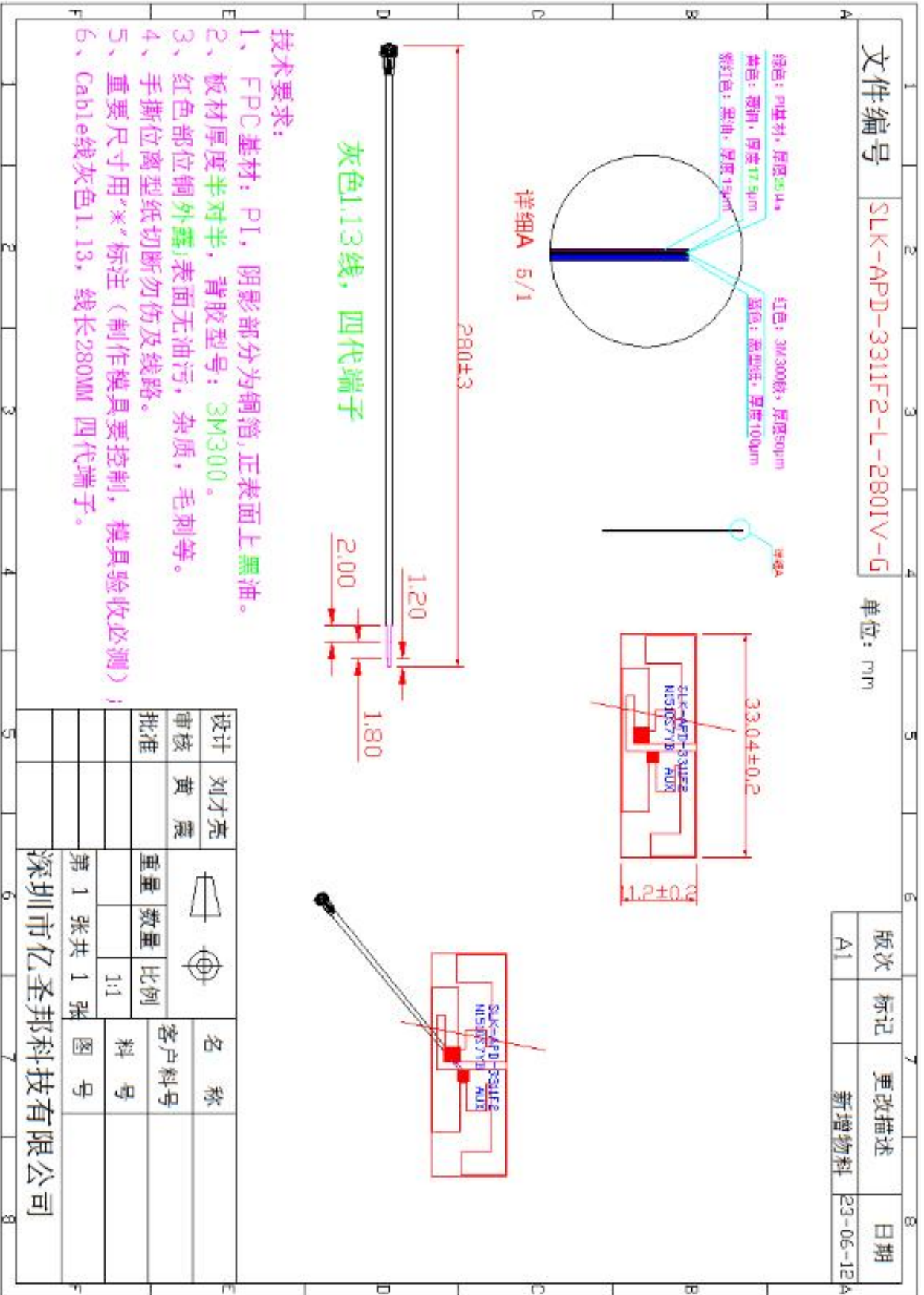


5-3.WIFI Antenna Gain/Efficiency/Radiation Pattern of 3D

| Frequency | Efficiency | Gain (dBi) | Efficiency (%) |
|-----------|------------|------------|----------------|
| 2400.0 | -3.20 | 1.79 | 47.87 |
| 2410.0 | -3.02 | 2.07 | 49.84 |
| 2420.0 | -3.25 | 2.00 | 47.29 |
| 2430.0 | -3.01 | 2.22 | 49.98 |
| 2440.0 | -3.24 | 2.38 | 47.38 |
| 2450.0 | -3.28 | 1.97 | 46.96 |
| 2460.0 | -3.51 | 1.77 | 44.62 |
| 2470.0 | -3.48 | 2.07 | 44.92 |
| 2480.0 | -3.26 | 2.53 | 47.19 |
| 2490.0 | -3.14 | 2.71 | 48.56 |
| 2500.0 | -3.37 | 2.11 | 46.08 |
| 5150.0 | -2.75 | 4.76 | 53.09 |
| 5350.0 | -2.18 | 4.91 | 60.58 |
| 5550.0 | -2.23 | 4.59 | 59.85 |
| 5650.0 | -2.41 | 4.14 | 57.37 |
| 5850.0 | -2.23 | 4.54 | 59.90 |



6. Antenna Dimensions (unit: mm)



7. Antenna Picture



WIFI-副天线

WIFI-主天线

