

Shenzhen Yishengbang Technology Co., LTD

Sample acceptance letter

SPECIFICATION FOR APPROVAL

The name of the company: Dongguan Aipuda Technology Co., Ltd

The material code: _____

Specifications: N1410P3EE

Admitted to date: _____

The name of the supplier: Shenzhen Yishengbang Technology Co., LTD

Supplier standard type number: WIFI MAIN:SLK-APD-3212A2-R-220IV-B

WIFI AUX:SLK-APD-3628A-M-245IV-G

Admit signature

| | | | | | |
|---|--------------------|---------------------|-------------------------------------|--------------|----------|
| For acceptance by the contractor | | | Dongguan Aipuda Technology Co., Ltd | | |
| Rf Engineer | quality department | Structural engineer | The engineer | The reviewer | approved |
| Xin Zhu Fan | Jie xing Chen | Cailiang Liu | | | |
| approved | | | Signed and sealed | | |
| date | | | date | | |
| 2023-10-11 | | | | | |
| instructions: <input type="checkbox"/> accept <input type="checkbox"/> Conditional acceptance | | | | | |
| note: | | | | | |



The name of the supplier: Shenzhen Yishengbang Technology Co., LTD

Supplier address: 101, Building C, Qianwan Hard Technology Industrial Park,
Nanchang Community, Xixiang Street, Bao'an District, Shenzhen

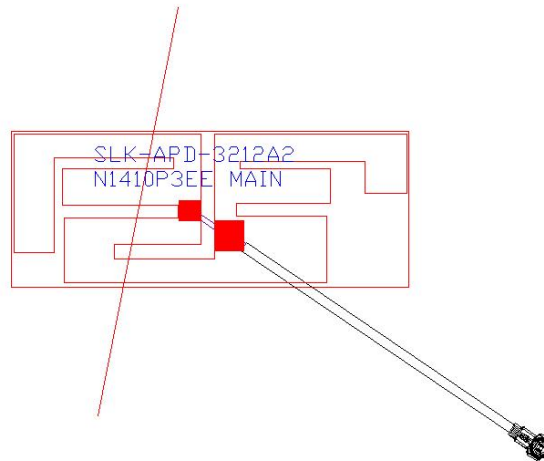
telephone: 18666299104

telephone: 18666299104

Shenzhen Yishengbang Technology Co., LTD

WIFI MAIN

1. Explanation of Product number :



Product Code:

- (1) Customer:Aipuda
- (2) Antenna Name:WIFI Antenna (WIFI Antenna)
- (3) Connector:1.13 Black line, Total length 220mm, 4th generation terminals

2. Features

- *Stable and reliable in performances
- *Compact size
- *RoHS compliance

3. Applications

- * IEEE802.11 (b/g/n/a)
- * Hand-held devices when WIFI (802.11b/g/n/a) functions are needed

4. Description

Holy bond's FPC antenna series are specially designed for WIFI (802.11b/g/n/a) applications. Based on Holy bond's proprietary design and processes, this FPC antenna has excellent stability and sensitivity to consistently provide high signal reception efficiency.

5. Electrical Specifications

5-1

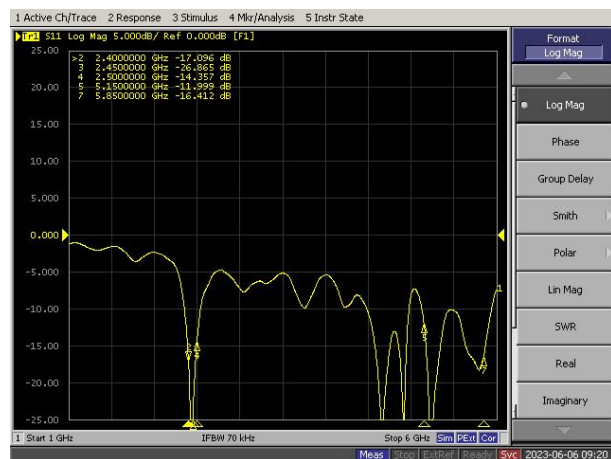
| Characteristics | Specifications | Unit |
|-----------------------------------|-------------------|------|
| Outline Dimensions | 32.29x12.68x0.12 | mm |
| Center Frequency | 2.4-2.5+5.15-5.85 | GHz |
| Bandwidth(under-10dB return loss) | 130min | MHz |
| VSWR | 3max | |

5-2.

VSWR



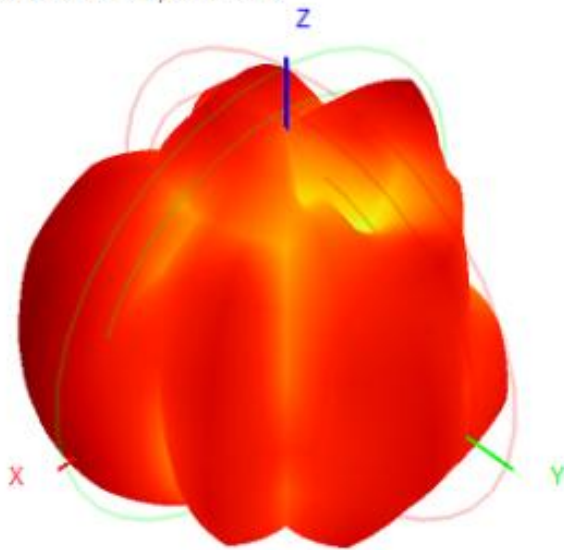
S11



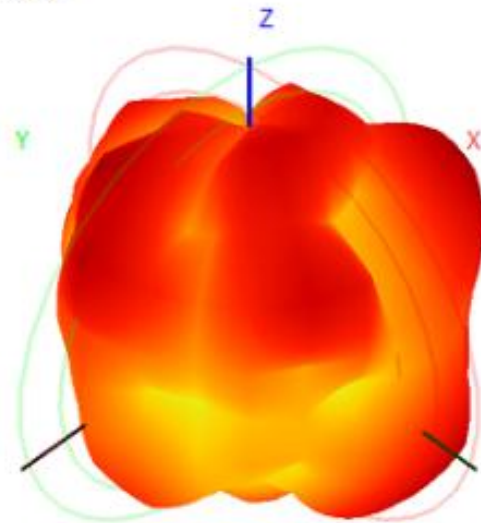
5-3.WIFI Antenna Gain/Efficiency/Radiation Pattern of 3D

| Frequency (MHz) | 2400.0 | 2410.0 | 2420.0 | 2430.0 | 2440.0 | 2450.0 | 2460.0 | 2470.0 | 2480.0 | 2490.0 | 2500.0 | 5150.0 | 5350.0 | 5500.0 | 5650.0 | 5850.0 |
|------------------|--------|--------|--------|--------|--------|--------|--------|--------|--------|--------|--------|--------|--------|--------|--------|--------|
| Efficiency (dBi) | -3.80 | -3.82 | -3.65 | -3.60 | -3.53 | -3.55 | -3.36 | -3.49 | -3.36 | -3.25 | -3.34 | -3.76 | -3.57 | -3.46 | -3.89 | -3.14 |
| Gain (dBi) | 1.53 | 1.53 | 1.71 | 1.70 | 1.72 | 1.61 | 2.13 | 1.63 | 1.84 | 2.04 | 2.28 | 2.95 | 2.81 | 2.01 | 2.55 | 2.75 |
| Efficiency (%) | 41.65 | 41.47 | 43.07 | 43.60 | 44.30 | 44.15 | 46.05 | 44.68 | 46.08 | 47.21 | 46.34 | 42.10 | 43.95 | 45.07 | 40.86 | 48.55 |

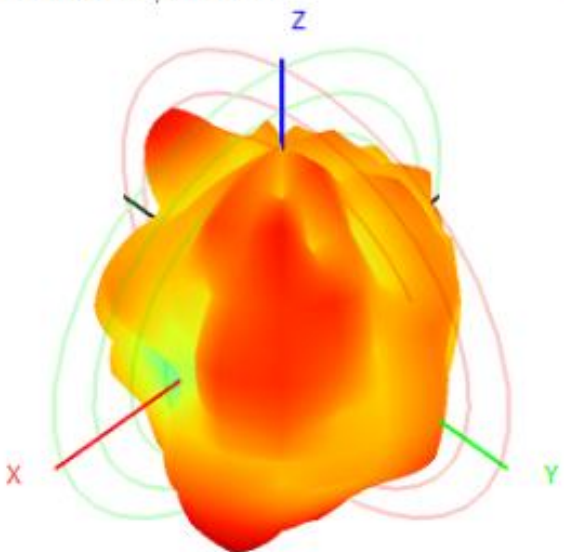
2450.0MHz H+V, Eff: 44.1%



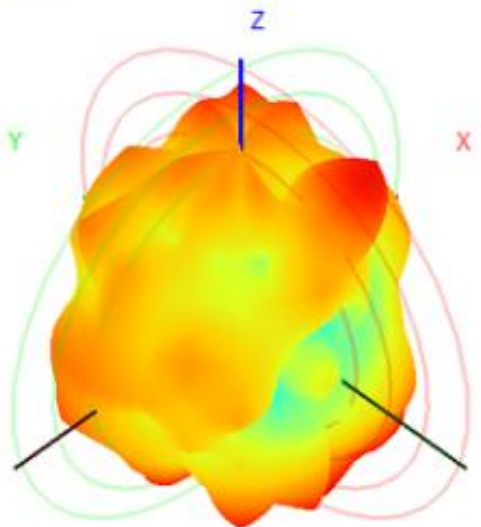
Back View



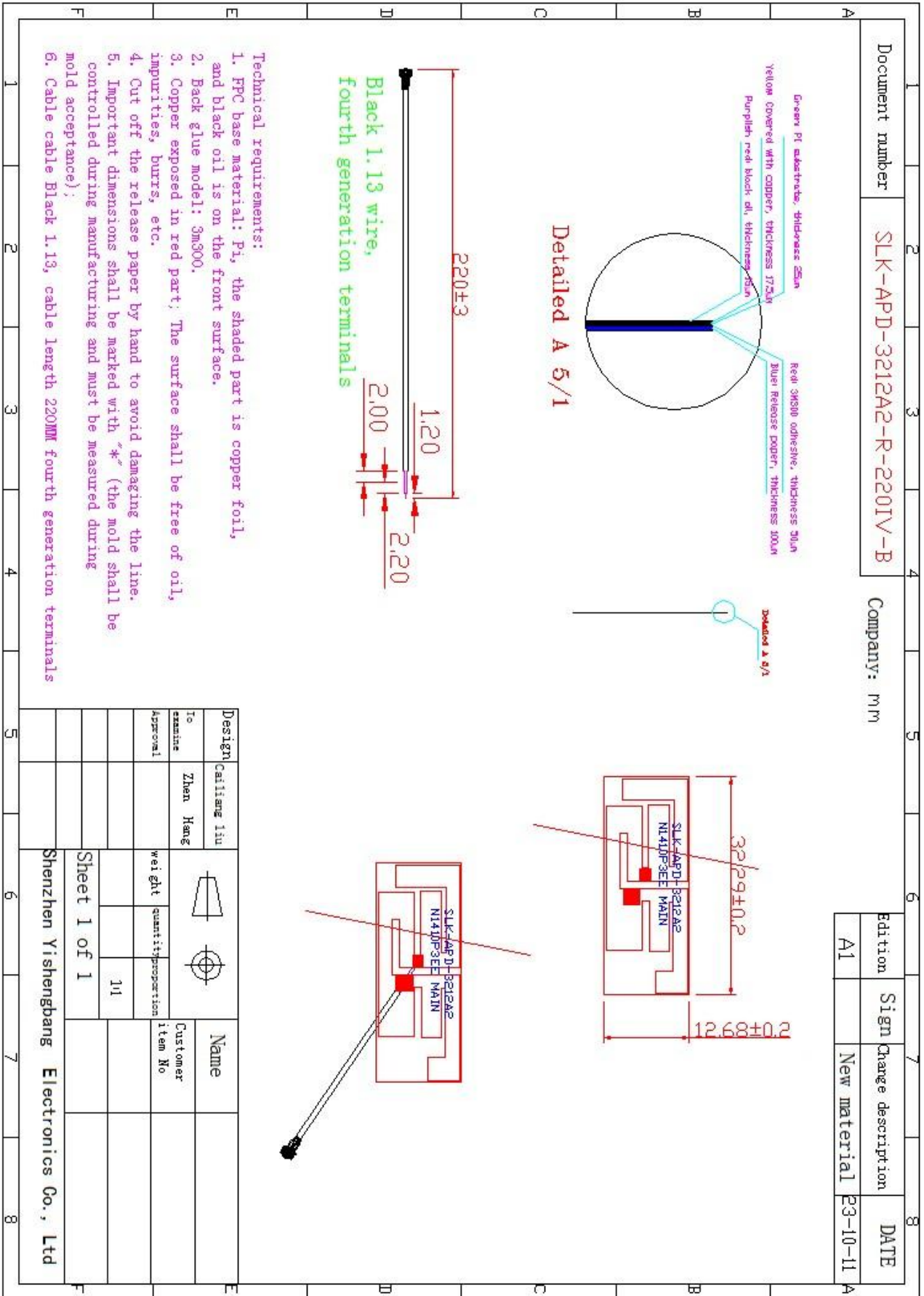
5850.0MHz H+V, Eff: 48.5%



Back View

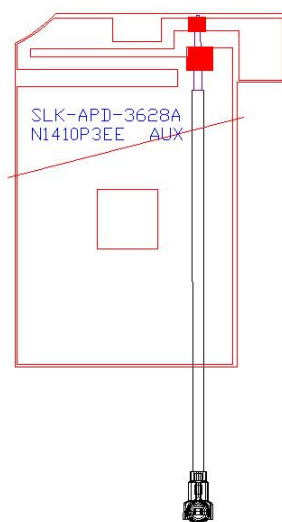


6. Antenna Dimensions (unit: mm)



WIFI AUX

1. Explanation of Product number :



Product Code:

(1) Customer:Aipuda

(2) Antenna Name:WIFI Antenna (WIFI Antenna)

(3) Connector:1.13 Grey line, Total length 245mm, 4th generation terminals

2. Features

*Stable and reliable in performances

*Compact size

*RoHS compliance

3. Applications

* IEEE802.11 (b/g/n/a)

* Hand-held devices when WIFI (802.11b/g/n/a) functions are needed

4. Description

Holy bond's FPC antenna series are specially designed for WIFI (802.11b/g/n/a) applications. Based on Holy bond's proprietary design and processes, this FPC antenna has excellent stability and sensitivity to consistently provide high signal reception efficiency.

Shenzhen Yishengbang Technology Co., LTD

5. Electrical Specifications

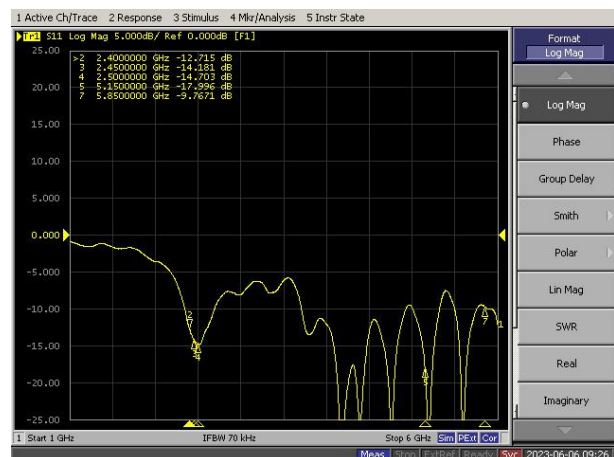
5-1

| Characteristics | Specifications | Unit |
|-----------------------------------|-------------------|------|
| Outline Dimensions | 28.14x36.46x0.12 | mm |
| Center Frequency | 2.4-2.5+5.15-5.85 | GHz |
| Bandwidth(under-10dB return loss) | 130min | MHz |
| VSWR | 3max | |

5-2.

VSWR

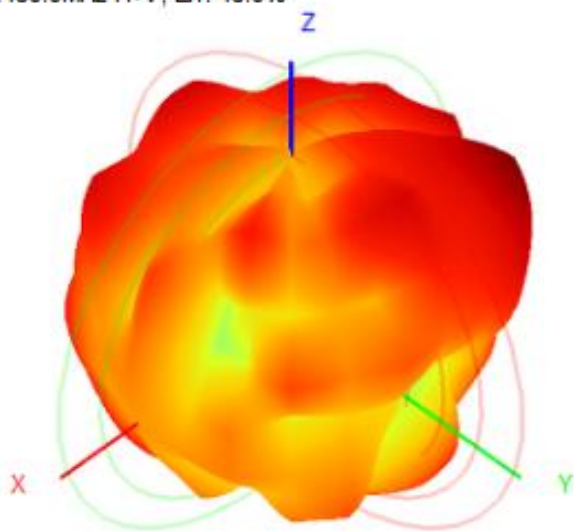
S11



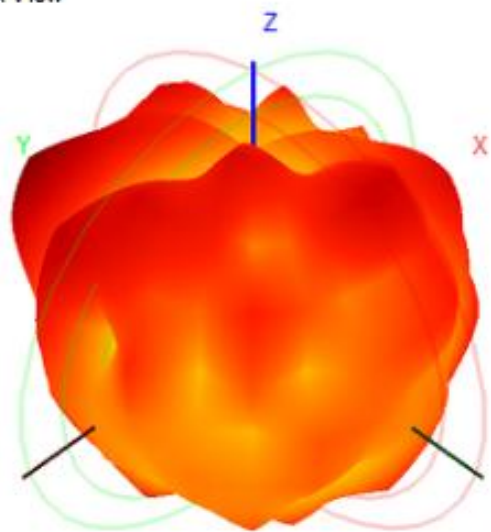
5-3.WIFI Antenna Gain/Efficiency/Radiation Pattern of 3D

| Frequency (MHz) | 2400.0 | 2410.0 | 2420.0 | 2430.0 | 2440.0 | 2450.0 | 2460.0 | 2470.0 | 2480.0 | 2490.0 | 2500.0 | 5150.0 | 5350.0 | 5500.0 | 5650.0 | 5850.0 |
|------------------|--------|--------|--------|--------|--------|--------|--------|--------|--------|--------|--------|--------|--------|--------|--------|--------|
| Efficiency (dBi) | -3.82 | -3.89 | -3.95 | -3.90 | -3.73 | -3.66 | -3.48 | -3.43 | -3.22 | -3.17 | -3.25 | -3.76 | -3.64 | -3.11 | -3.37 | -3.41 |
| Gain (dBi) | 2.24 | 2.15 | 1.92 | 1.75 | 1.96 | 2.50 | 2.66 | 2.83 | 2.78 | 2.73 | 2.47 | 2.87 | 2.98 | 2.43 | 2.51 | 2.02 |
| Efficiency (%) | 41.43 | 40.81 | 40.24 | 40.67 | 42.34 | 42.97 | 44.85 | 45.39 | 47.63 | 48.19 | 47.29 | 42.04 | 43.22 | 48.83 | 46.02 | 45.56 |

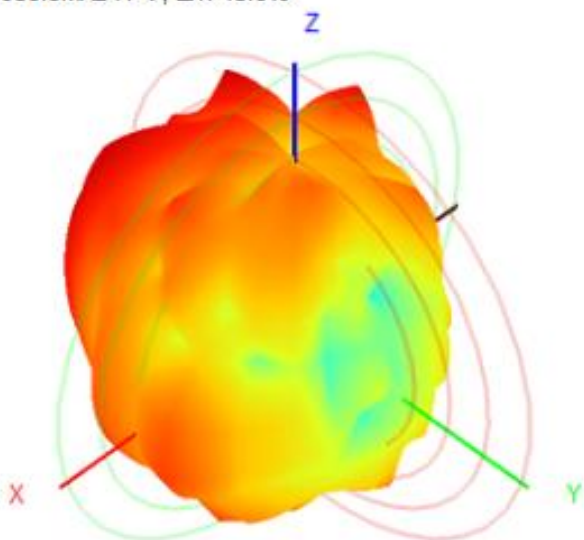
2450.0MHz H+V, Eff: 43.0%



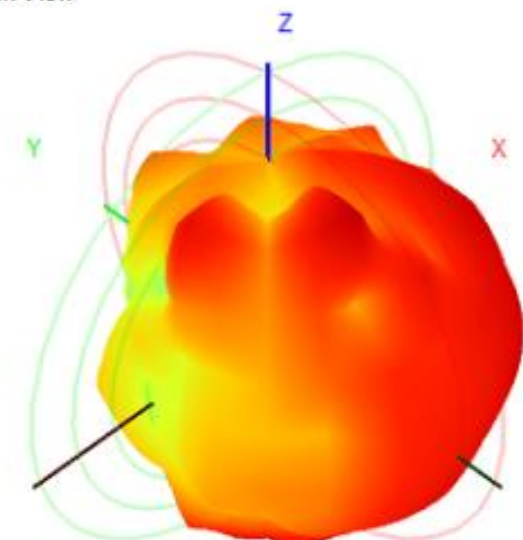
Back View



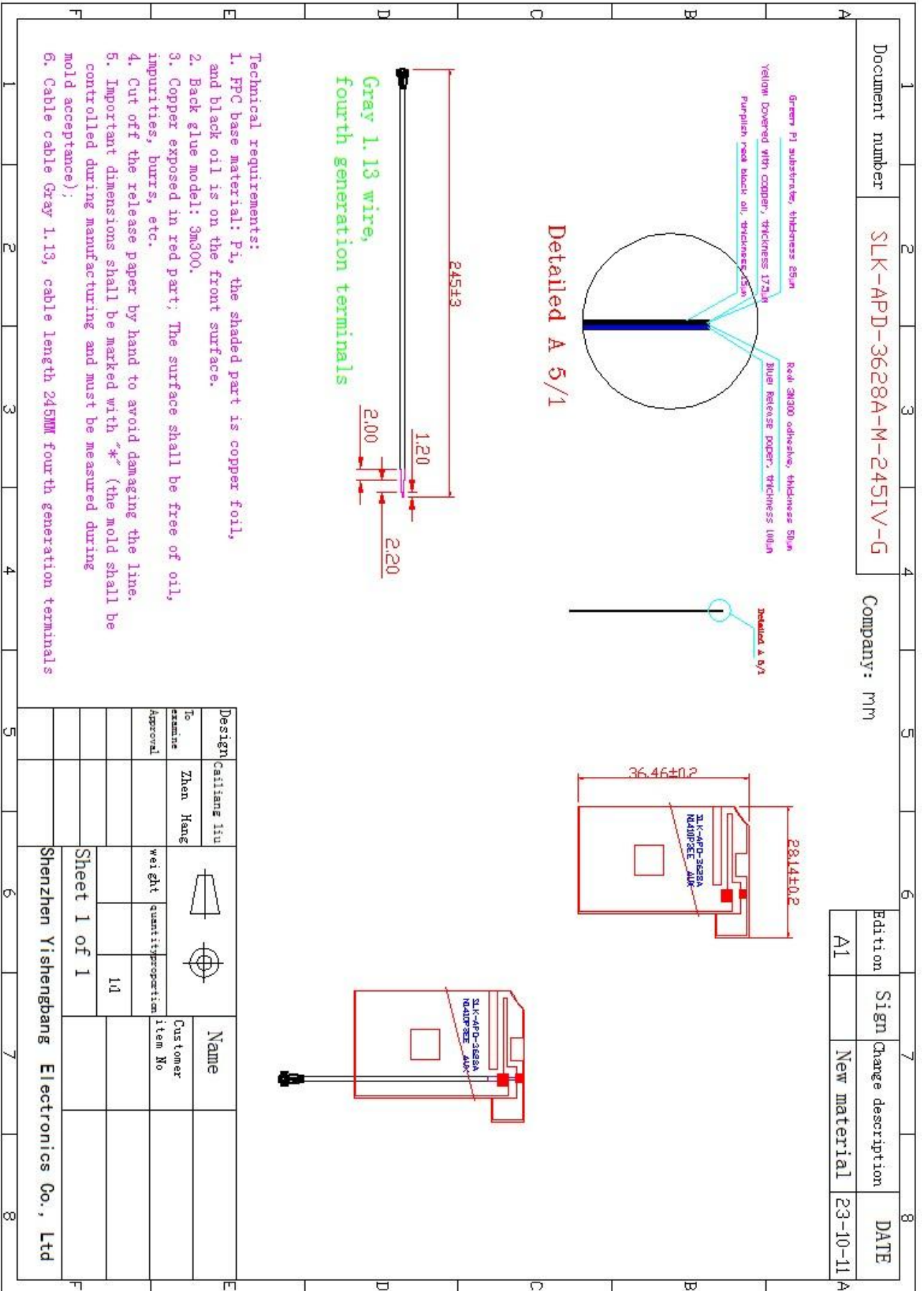
5850.0MHz H+V, Eff: 45.6%



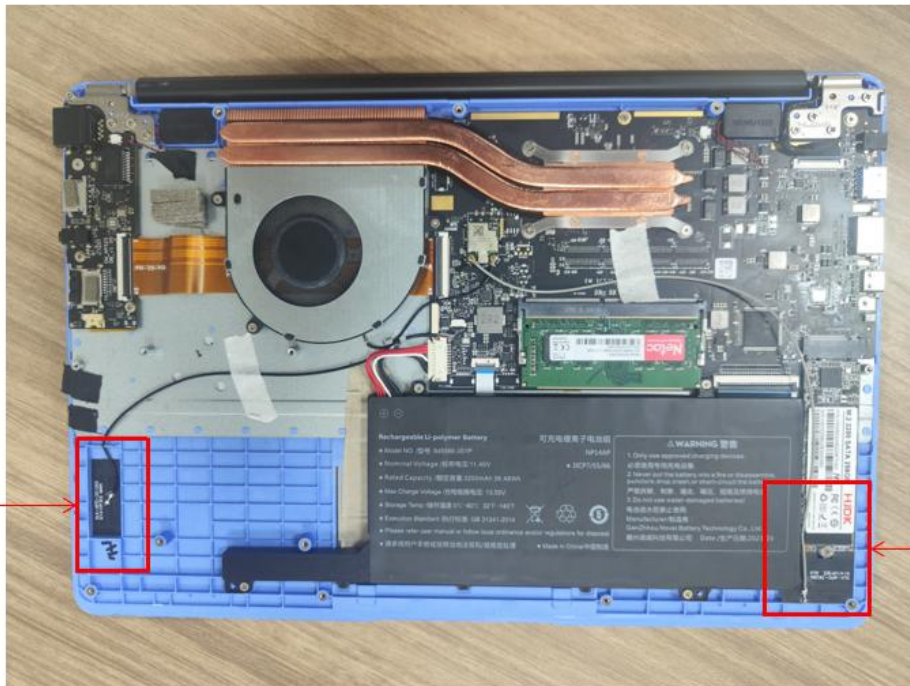
Back View



6. Antenna Dimensions (unit: mm)



7. Antenna Picture



MAIN ←

→ AUX