

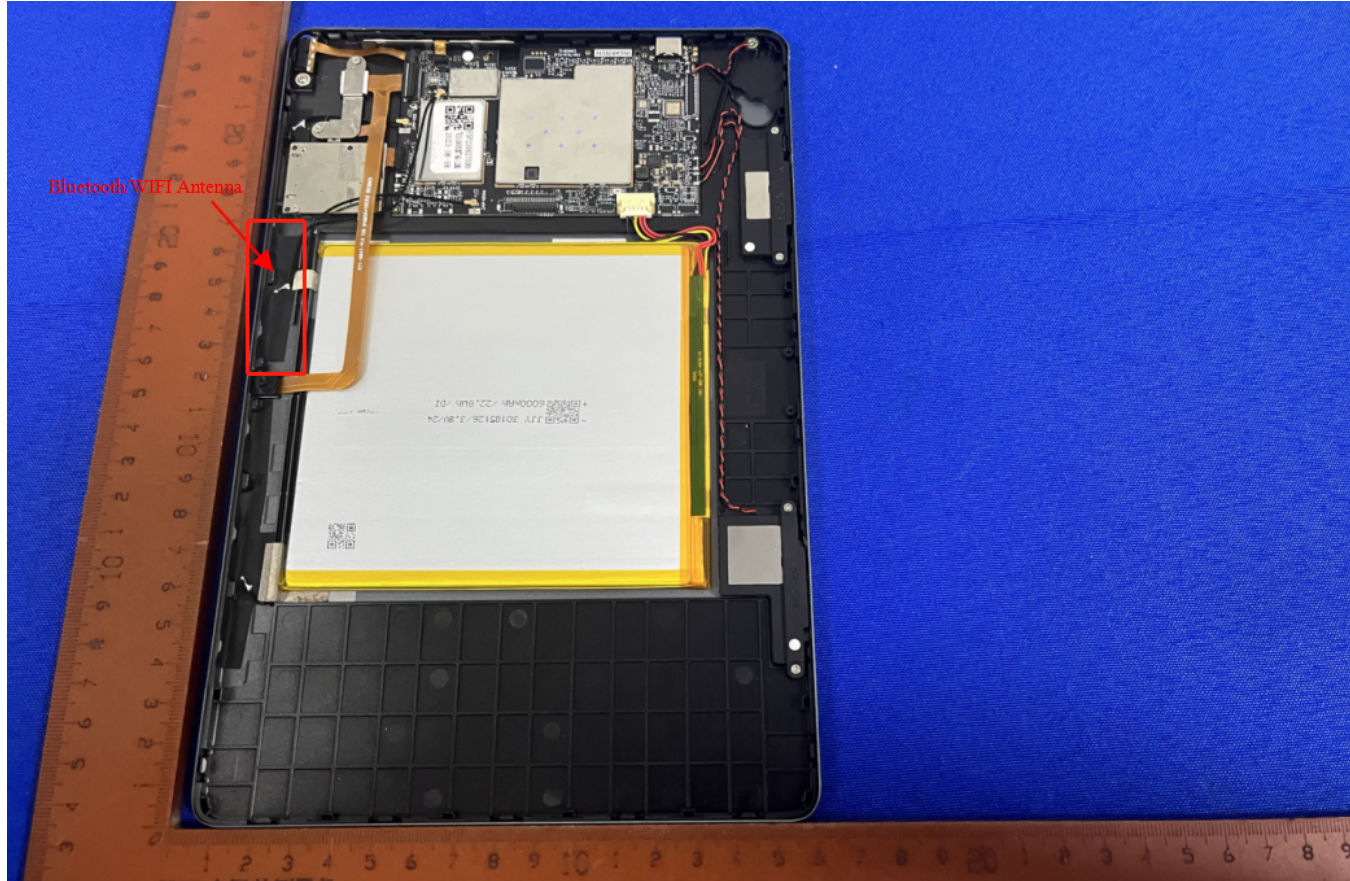
Antenna specification

Model: MO1071S-10.1

Manufacturer: Chengfeng

Frequency range: 2400-2500MHz; 5000-6000MHz

Antenna Size



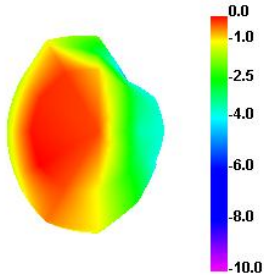
WIFI&Bluetooth SWR



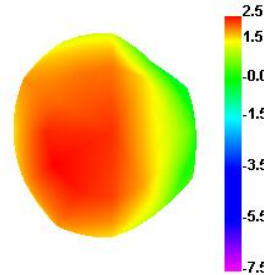
2. 4GWIFI&Bluetooth Data

Passive Test For 2.4Gwifi								
Freq	Effi	Effi	Gain	Gain	UHS	DHIS	Max	Min
(MHz)	(%)	(dB)	(dBi)	(dBd)	(%)	(%)	(dB)	(dB)
2400	34.07	-4.68	0	-2.15	23.63	10.44	0	-15.93
2410	36.7	-4.35	0.27	-1.88	25.447	11.251	0.27	-16.41
2420	38.31	-4.17	0.55	-1.6	26.645	11.666	0.55	-16.81
2430	40.95	-3.88	0.7	-1.45	28.535	12.419	0.7	-16.88
2440	47.81	-3.21	1.34	-0.81	33.385	14.421	1.34	-16.45
2450	53.31	-2.73	1.64	-0.51	37.237	16.073	1.64	-15.78
2460	54.58	-2.63	1.77	-0.38	38.254	16.331	1.77	-16.73
2470	52.5	-2.8	1.56	-0.59	36.97	15.529	1.56	-18.04
2480	53.66	-2.7	1.7	-0.45	37.974	15.682	1.7	-18.87
2490	59.85	-2.23	2.18	0.03	42.648	17.2	2.18	-19.01
2500	64.2	-1.92	2.46	0.31	46.089	18.114	2.46	-19.78

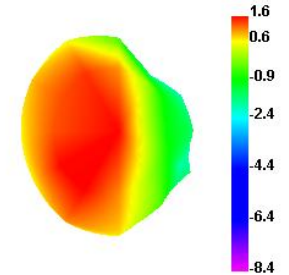
2400.000MHz



2500.000MHz



2450.000MHz

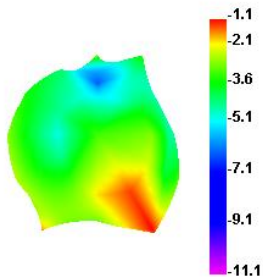


5GWIFI Data

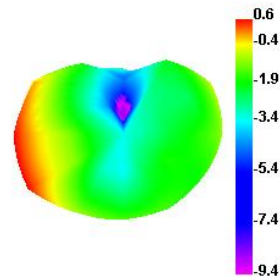
Passive Test For 5Gwifi

Freq	Effi	Effi	Gain	Gain	UHS	DHIS	Max	Min
(MHz)	(%)	(dB)	(dBi)	(dBd)	(%)	(%)	(dB)	(dB)
5000	29.04	-5.37	-1.08	-3.23	16.984	12.055	-1.08	-15.59
5100	44.06	-3.56	-0.08	-2.23	25.736	18.328	-0.08	-14.43
5200	41.23	-3.85	1.47	-0.68	23.825	17.402	1.47	-15.78
5300	43.21	-3.64	0.89	-1.26	24.988	18.224	0.89	-20.61
5400	36.83	-4.34	0.59	-1.56	21.507	15.319	0.59	-16.86
5500	32.94	-4.82	0.58	-1.57	20.033	12.908	0.58	-20.17
5600	38.2	-4.18	0.56	-1.59	24.809	13.389	0.56	-16.96
5700	47.79	-3.21	1.72	-0.43	32.863	14.928	1.72	-16.92
5800	57.38	-2.41	2.4	0.25	40.503	16.877	2.4	-14.27
5900	56.88	-2.45	3.05	0.9	41.391	15.487	3.05	-17.26
6000	66.72	-1.76	3.46	1.31	47.915	18.802	3.46	-18.36

5000.000MHz



5500.000MHz



6000.000MHz

