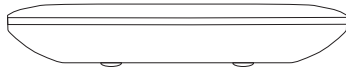


MC-10D 用户手册 (产品说明书)

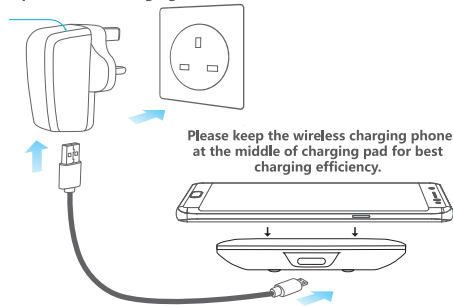
尺寸: 210*100mm

材质: 157克铜版纸 双面印刷

Fast Wireless Charger User Manual



Please use QC2.0 or 3.0 power adapter for fast charging function.



Please keep the wireless charging phone at the middle of charging pad for best charging efficiency.

Specifications

Input	DC5V \approx 2A	DC9V \approx 1.67A
Output	10W/7.5W/5W	
Product Standard	Qi	
Charging Distance	\leq 10mm	
Charging Efficiency	\leq 80%	
Product Dimension	ϕ 92mm*15mm	
Product Material	ABS+PC	

5V2A adapter is applicable to 5W standard wireless charging mode.

9V1.67A adapter is applicable to iPhone 7.5W fast wireless charging mode.

9V1.67A adapter is applicable to Samsung 10W fast wireless charging mode.

※ Fast wireless charging requires QC2.0/3.0 adapter or Samsung original fast charging adapter.

Indicator light Status and Protection Function

Standby: Indicator light keeps green.

Charging: Indicator light turns blue and turns off automatically after 30 seconds.

FOD: When put coin, keys or any metal/magnet objects on the charger, indicator light will flash 6 times and then turn off.

perfect protection function based on over voltage protection, over current protection, over temperature protection and short circuit protection.

The indicator flashes and the buzzer beeps if the wireless charger is not work well.

Attention

1. Please do not vigorously extrude or collide.
2. Please do not dismantle or put it into fire or water when the product is power on, to avoid short circuit or leakage.
3. Please do not use it in severely high temperature, high humidity or corrosive environment, to avoid damage to the circuit leakage.
4. Please do not put the magnetic strip or chip card (Such as ID card, bankcard etc.) on the charging pad to avoid to cause magnetic card lose efficacy.
5. Please do not put the metal (Such as coin etc.) on the charging pad when charging, to avoid damage from heating.

Note: This product is applicable to all Qi standard wireless charging phones, other phones need an external receiver for wireless charging function.

FCC Warning

This device complies with part 15 of the FCC Rules. Operation is subject to the following two conditions: (1) This device may not cause harmful interference, and (2) this device must accept any interference received, including interference that may cause undesired operation.

Any Changes or modifications not expressly approved by the party responsible for compliance could void the user's authority to operate the equipment.

This equipment has been tested and found to comply with the limits for a Class B digital device, pursuant to part 15 of the FCC Rules. These limits are designed to provide reasonable protection against harmful interference in a residential installation. This equipment generates uses and can radiate radio frequency energy and, if not installed and used in accordance with the instructions, may cause harmful interference to radio communications. However, there is no guarantee that interference will not occur in a particular installation. If this equipment does cause harmful interference to radio or television reception, which can be determined by turning the equipment off and on, the user is encouraged to try to correct the interference by one or more of the following measures:

- Reorient or relocate the receiving antenna.
- Increase the separation between the equipment and receiver.
- Connect the equipment into an outlet on a circuit different from that to which the receiver is connected.
- Consult the dealer or an experienced radio/TV technician for help.

FCC RF exposure statement:

The equipment complies with FCC radiation exposure limits set forth for an uncontrolled environment. This equipment should be installed and operated with minimum distance between 20cm the radiator your body.