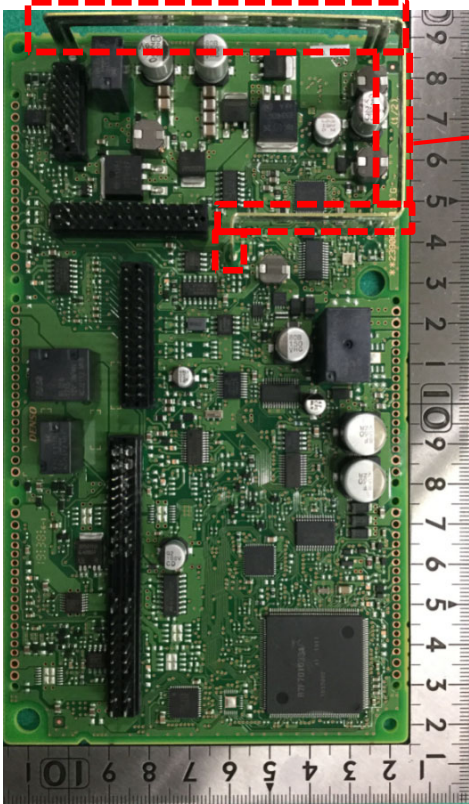
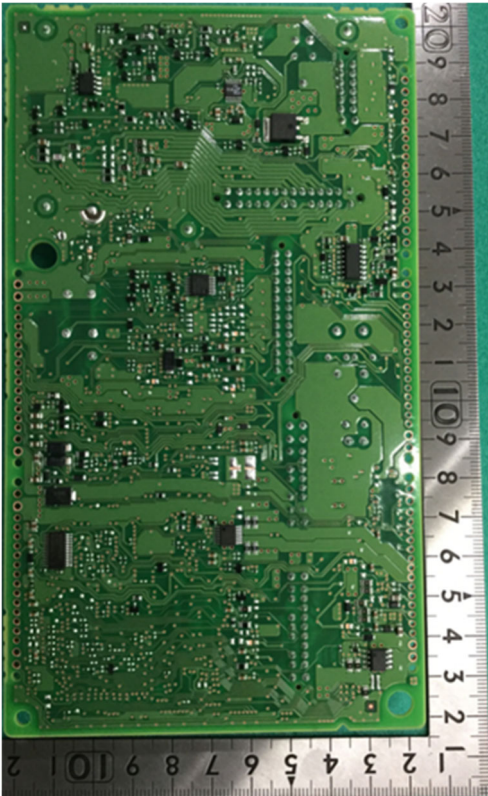


Internal Photos: Junction Box



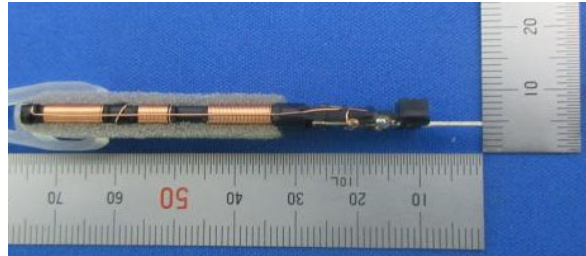
Antenna for Rx

Component side

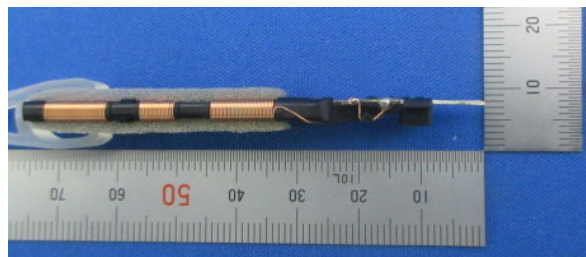


Solder side

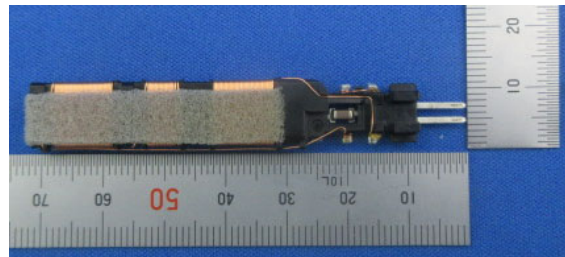
Internal Photos: LF antenna



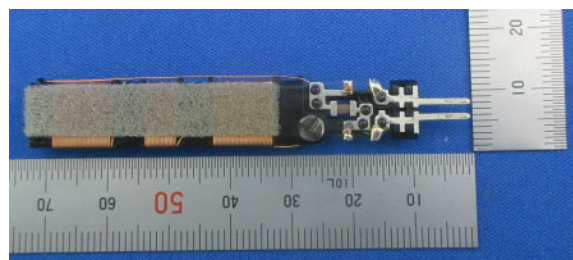
Front



Rear



Top

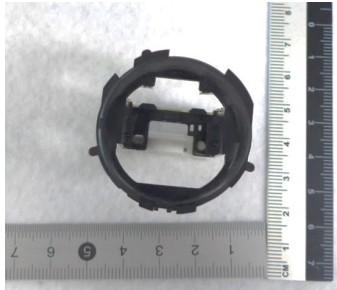


Bottom

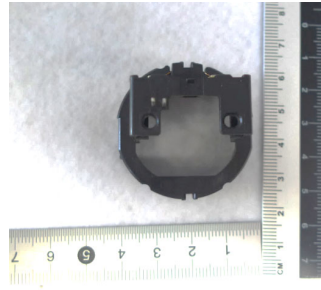
Note:

LF antenna does not have any PCB.

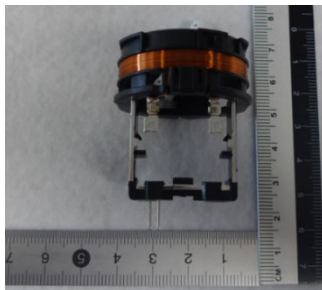
Internal Photos: Immobilizer antenna



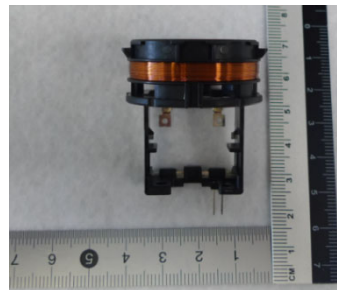
Front



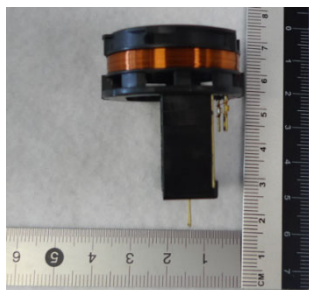
Rear



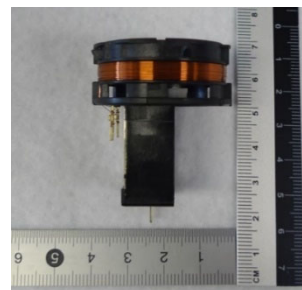
Top



Bottom



Right



Left

Note:

The outer case may be changed.

Immobilizer antenna has the PCB, but it is not used for an antenna circuit.