



# PROFESSIONAL WIRELESS THERMAL PRINTER

Quick Start Guide



Download the free app and start printing instantly! Scan this QR Code or visit [www.coreinnovationsinc.com/printer](http://www.coreinnovationsinc.com/printer)

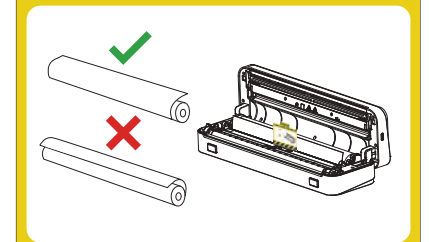
CTP100LG

## Getting Started

Please read instruction card for proper setup before use.

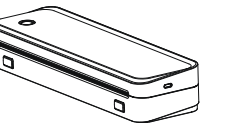
### PLEASE FOLLOW INSTRUCTIONS BELOW TO CORRECTLY LOAD PAPER ROLLS.

1. Look for the instruction tab on the paper roll.
2. Place the paper roll as indicated on label.
3. Carefully close the lid.

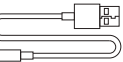


## In the Box

1 Thermal Printer



USB-C® Charging Cable



USB-C® Adapter



Quick Start Guide



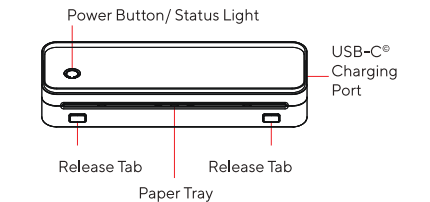
Warranty Card



Instruction Card



## Device Overview



### Indicator Light

- Solid Green Light: **Device is ready**
- Blinking Red Light: **Low Battery**
- Solid Red Light: **Charging/ Out of paper/ Overheated/ Output tray is open**

## Load Printer Paper



Press the release tabs to open the printer



Locate the instruction tab on paper roll and place as shown



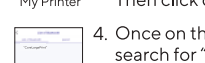
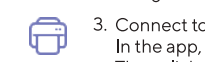
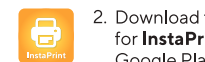
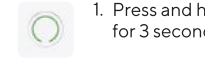
Pull 1" inch of the paper roll and place outside of the printer for optimal printing. Close the lid



Pull the paper away from you and tear at a 45° angle

## Bluetooth® Setup

Fully charge before initial use and make sure to disconnect from other nearby paired devices.



1. Press and hold the power button for 3 seconds to power on

2. Download the free app by searching for **InstaPrint** on the App Store® or Google Play™

3. Connect to Bluetooth® via the app. In the app, click on the profile tab. Then click on the "My Printer" icon

4. Once on the "My Printer" page, search for **"CoreLargePrint"** on the available device list and tap to connect

## Windows™/MacOS® Setup

1. Download the Windows™ or MacOS® printer driver at:

[www.coreinnovationsinc.com/printer](http://www.coreinnovationsinc.com/printer)

2. Install the downloaded driver and follow the on-screen instructions

3. Connect your printer using the included USB-C® cable (use the USB-C® adapter if needed)

4. Start printing by selecting **"CTP100LG"** from the printer list when prompted

## Important Safety Warning

Avoid using or storing in the following locations. Damage to the printer may be caused.

Do not leave in an exposed area with direct sunlight or near heat-generating equipment.

Do not leave in an area where temperature or humidity is excessively high or low, or changes radically.

Do not leave in an area exposed to water or liquid.

Avoid dropping or harsh impact to the printer, as damage may be caused.

Avoid entry of foreign objects or materials, as damage may be caused.

When cleaning do not use volatile liquid (thinner, benzene, etc.) or wet cloth. Deterioration or discoloration may occur. Use a dry, soft cloth.

Do not move the printer or place harsh impact on printer while in printing or standby operation. Printer power may disconnect and print data may be lost.

When charging your device, gently connect or disconnect charging cable to avoid damage. Please mind the paper cutting teeth. This area is sharp and can cause harm if not careful.

This device contains small parts and is not recommended for kids under 3 years old.

Adult supervision is recommended for kids under 13 years old. This equipment is not suitable for use in locations where children are likely to be present.

Disassembly of printer will cause damage and void warranty.

If severe bulging occurs to battery, please discontinue use.

## FCC Caution

This device complies with Part 15 of the FCC Rules. Operation is subject to the following two conditions: (1) This device may not cause harmful interference, and (2) this device must accept any interference received, including interference that may cause undesired operation.

Any changes or modifications not expressly approved by the party responsible for compliance could void the user's authority to operate the equipment.

Note: This equipment has been tested and found to comply with the limits for a Class B digital device, pursuant to Part 15 of the FCC Rules. These limits are designed to provide reasonable protection against harmful interference in a residential installation. This equipment generates, uses and can radiate radio frequency energy and, if not installed and used in accordance with the instructions, may cause harmful interference to radio communications. However, there is no guarantee that interference will not occur in a particular installation. If this equipment does cause harmful interference to radio or television reception, which can be determined by turning the equipment off and on, the user is encouraged to try to correct the interference by one or more of the following measures:

- Reorient or relocate the receiving antenna.
- Increase the separation between the equipment and receiver.
- Connect the equipment into an outlet on a circuit different from that to which the receiver is connected.
- Consult the dealer or an experienced radio/TV technician for help.

The device has been evaluated to meet general RF exposure requirement. The device can be used in portable exposure condition without restriction.

## Need Help?

Email us at [support@dpaudiovideo.zendesk.com](mailto:support@dpaudiovideo.zendesk.com) or call us at **1-833-909-CORE (1-833-909-2673)**. We are available Monday - Friday, 9am-5pm PST, except major holidays.

For information on recycling, please visit <https://www.coreinnovationsinc.com/support>

© 2024 Core Innovations. All rights reserved. Core Innovations is a trademark of DP Audio Video. © 2024 Bluetooth SIG, Inc. All rights reserved. The Bluetooth® trademarks including the BLUETOOTH word mark, the figure mark (the runic "B" and oval design), and the combination mark (Bluetooth word mark and design) are owned by the Bluetooth SIG. These and all third party trademarks are the property of their respective owners. Used with permission. © 2024 Google Inc. All rights reserved. Google, Android and Google Play are trademarks of Google LLC. © 2024 Apple Inc. All rights reserved. Apple and App Store are trademarks of Apple LLC.

**WARNING:** Cancer and Reproductive Harm [www.P65Warnings.ca.gov](http://www.P65Warnings.ca.gov)

