

WIFI Antenna (T3011)

1. Explanation of Product number

S L K - W H J - T 3 0 1 1 - L - 2 2 0 I V - B

1 2 3 4 5



Manufacturer: Shenzhen Yishengbang Technology Co., Ltd

Address: 608, Building B, Qianwan Hard Technology Industrial Park, Bao'an District, Shenzhen

Model: SLK-WHJ-T3011-L-220IV-B

Product Code:

(1) Customer:

WHJ:

(2) Project:

T3011: SLK-WHJ-T3011 (WIFI antenna)

(3) Welding Position

L:Left

(4) Cable Length:

220IV: 220*1.13MM

(5) Cable Color

B: Black

2. Features

- *Stable and reliable in performances
- *Compact size
- *RoHS compliance

3. Applications

- * IEEE802.11 (a/b/g/n)
- * Hand-held devices when WIFI (802.11a/b/g/n) functions are needed

4. Description

Holy bond's FPC antenna series are specially designed for WIFI (802.11a/b/g/n) applications. Based on Holy bond's proprietary design and processes, this FPC antenna has excellent stability and sensitivity to consistently provide high signal reception efficiency.

5. Electrical Specifications

5-1

Characteristics	Specifications	Unit
Outline Dimensions	30*11*5.2 T=0.3	mm
Center Frequency	2.4-2.5+5.15-5.85	GHz
Bandwidth(under-10dB return loss)	130min	MHz
VSWR	3max	
Impedance	50	Ω
Polarization	Linear Polarization	

5-2.

VSWR



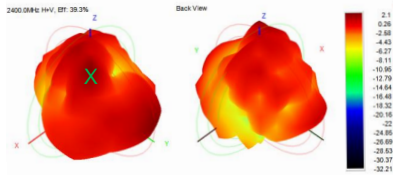
S11



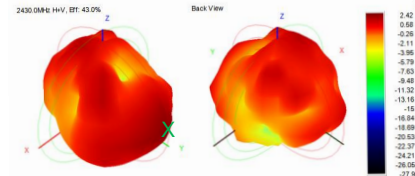
5-3.WIFI +BT Antenna Gain/Efficiency/Radiation Pattern of 3D

Frequency (MHz)	Efficiency (dBi)	Gain (dBi)	Efficiency (%)
2400.0	-4.05	2.10	39.31
2410.0	-4.32	2.64	36.97
2420.0	-3.93	2.02	40.42
2430.0	-3.67	2.42	43.00
2440.0	-3.66	2.25	43.01
2450.0	-3.52	2.60	44.47
2460.0	-3.35	1.97	46.20
2470.0	-3.52	1.90	44.47
2480.0	-3.45	2.01	45.15
2490.0	-3.63	1.87	43.32
2500.0	-3.95	1.49	40.28
5150.0	-5.33	2.46	29.31
5350.0	-4.79	2.18	33.17
5550.0	-4.23	1.80	37.80
5750.0	-4.81	1.63	33.02
5850.0	-5.12	1.90	30.73

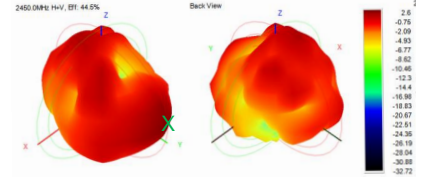
Max Gain: 2.10dBi



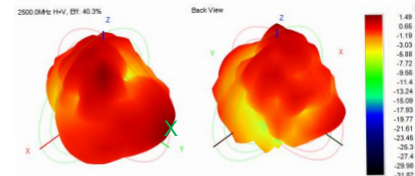
Max Gain: 2.42dBi



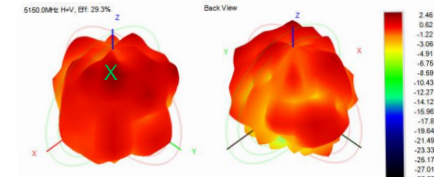
Max Gain: 2.60dBi



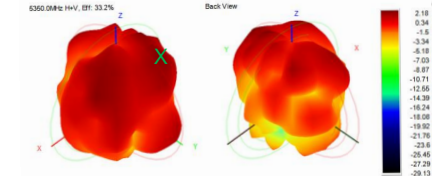
Max Gain: 1.49dBi



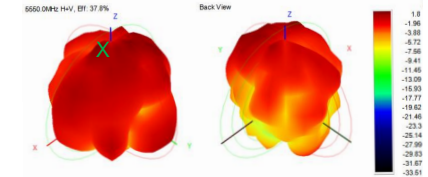
Max Gain: 2.46dBi



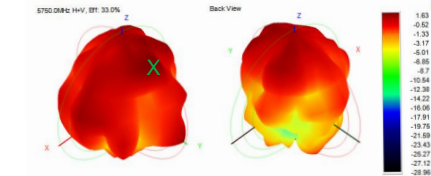
Max Gain: 2.18dBi



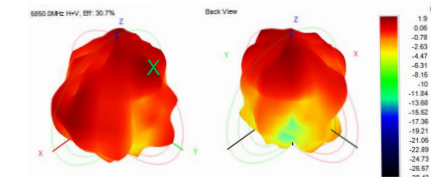
Max Gain: 1.80dBi



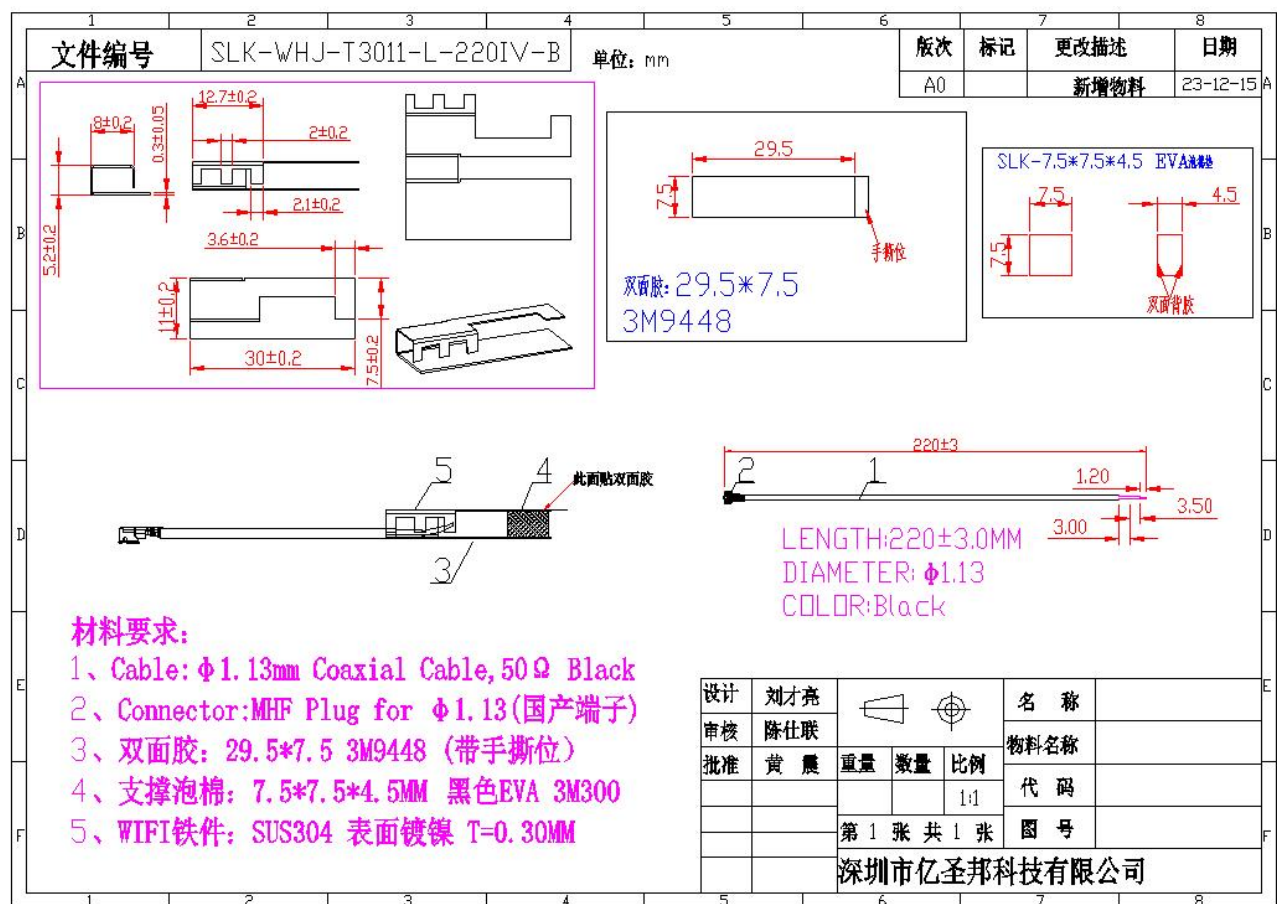
Max Gain: 1.63dBi



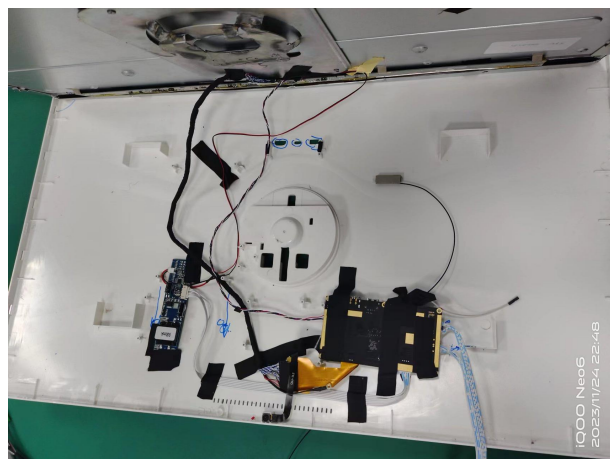
Max Gain: 1.90dBi



6. Antenna Dimensions (unit: mm)



7. Antenna Picture



WIFI