

Antenna Report

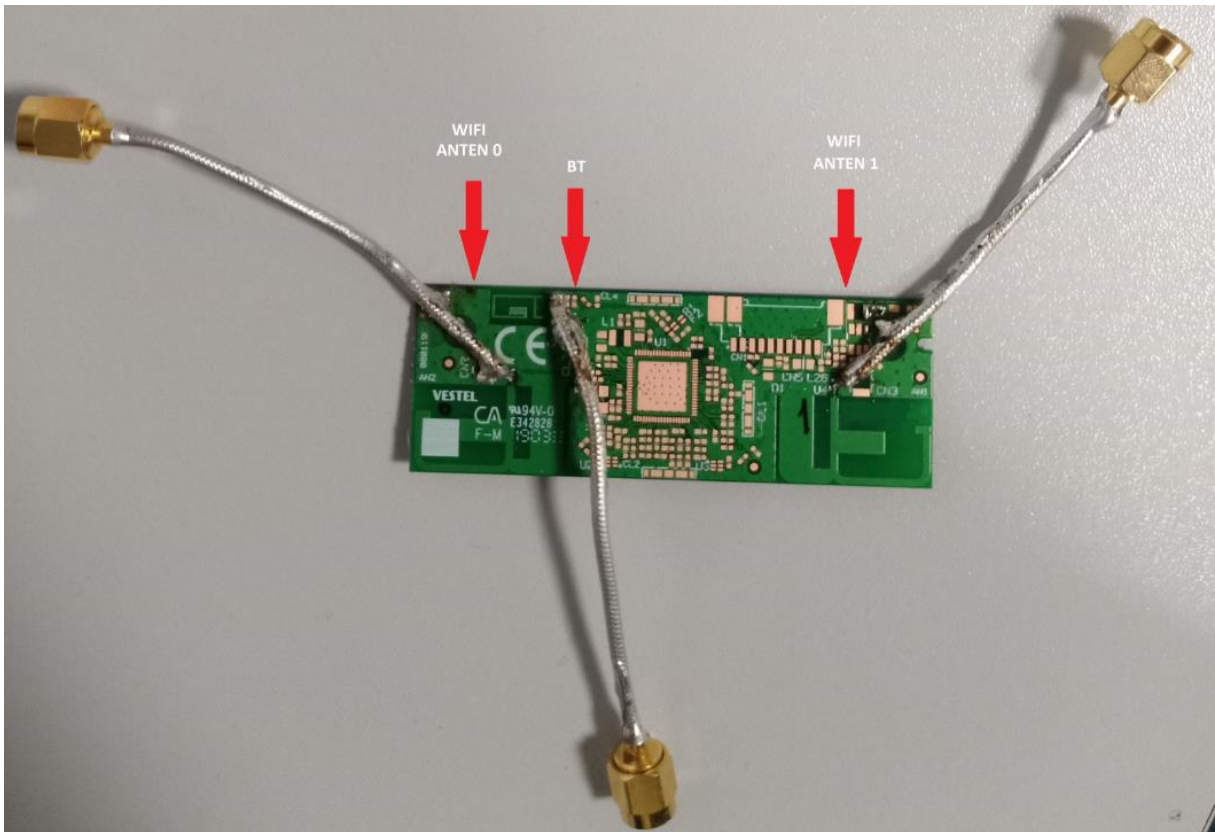


Table of Contents

1	Basic Antenna Characteristic	3
1.1	Onboard Printed Antenna Gain Table	3
1.2	Antenna Dimensions	3
1.3	Antenna 0 Return Loss	4
1.4	Antenna 1 Return Loss	4
1.5	Antenna BT Return Loss	5
2	Antenna Gain Vs Frequency Characteristics	6
3	Antenna 0 Radiation Patterns @ Peak Gain	7
3.1	2460 MHz	7
3.2	5320 MHz	7
3.3	5520 MHz	8
3.4	5755 MHz	9
4	Antenna 1 Radiation Patterns @ Peak Gain	10
4.1	2460 MHz	10
4.2	5310 MHz	11
4.3	5510 MHz	12
4.4	5785 MHz	13
5	Antenna BT Radiation Pattern @ Peak Gain	14
6	Test Site Information	15

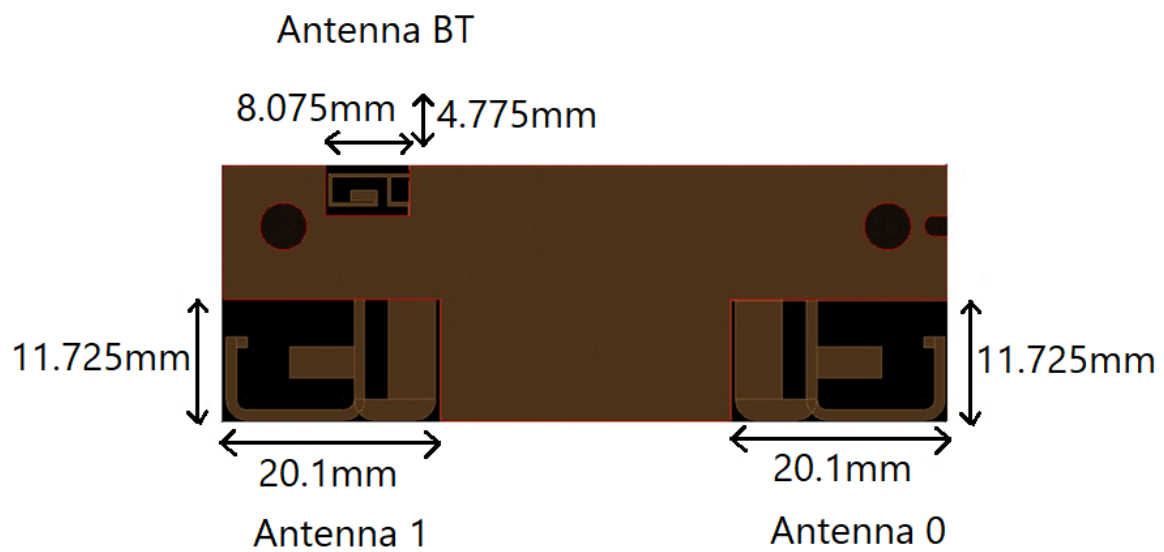
1 Basic Antenna Characteristic

Module has on board printed antennas with the given gain values in below.

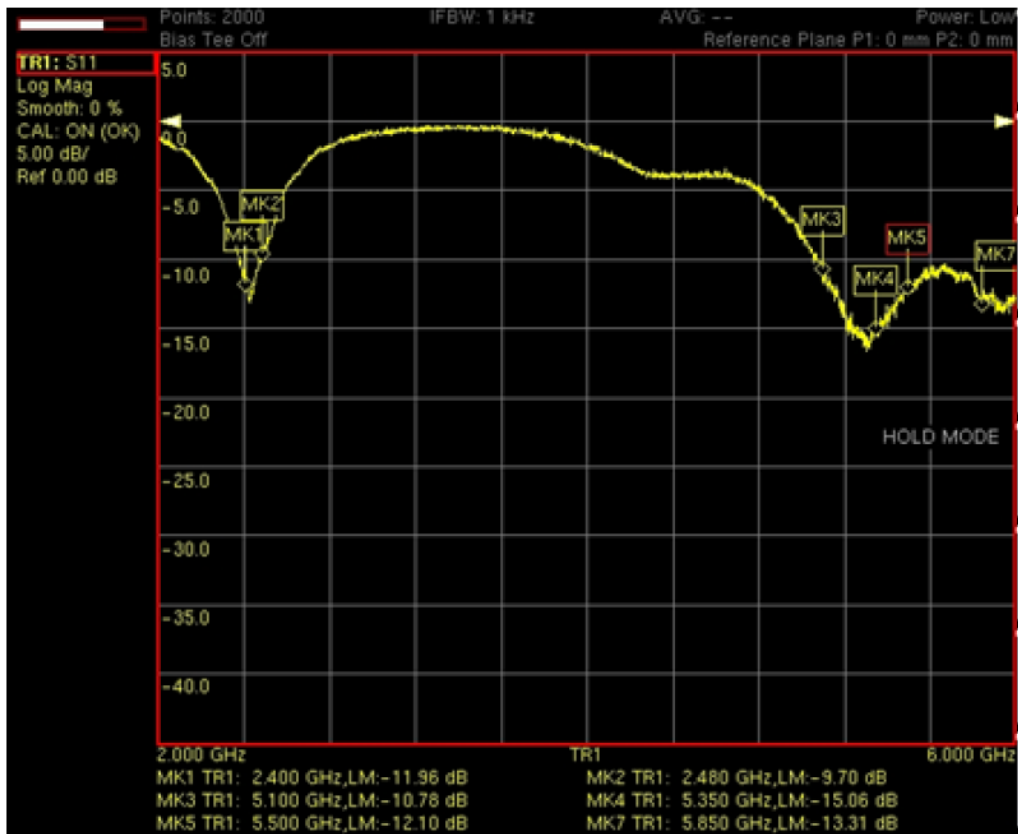
1.1 Onboard Printed Antenna Gain Table

	2.4 Ghz	5 Ghz low band (5180 to 5320) (ch 36-64)	5 Ghz medium band (5500 to 5700) (ch100-140)	5 Ghz high band (5745 to 5825) (ch149-165)
Antenna 0	3,4 dBi	2,97 dBi	3,69 dBi	2,89 dBi
Antenna 1	2,12 dBi	3,7 dBi	3,68 dBi	2,83 dBi
BT	0,29 dBi			

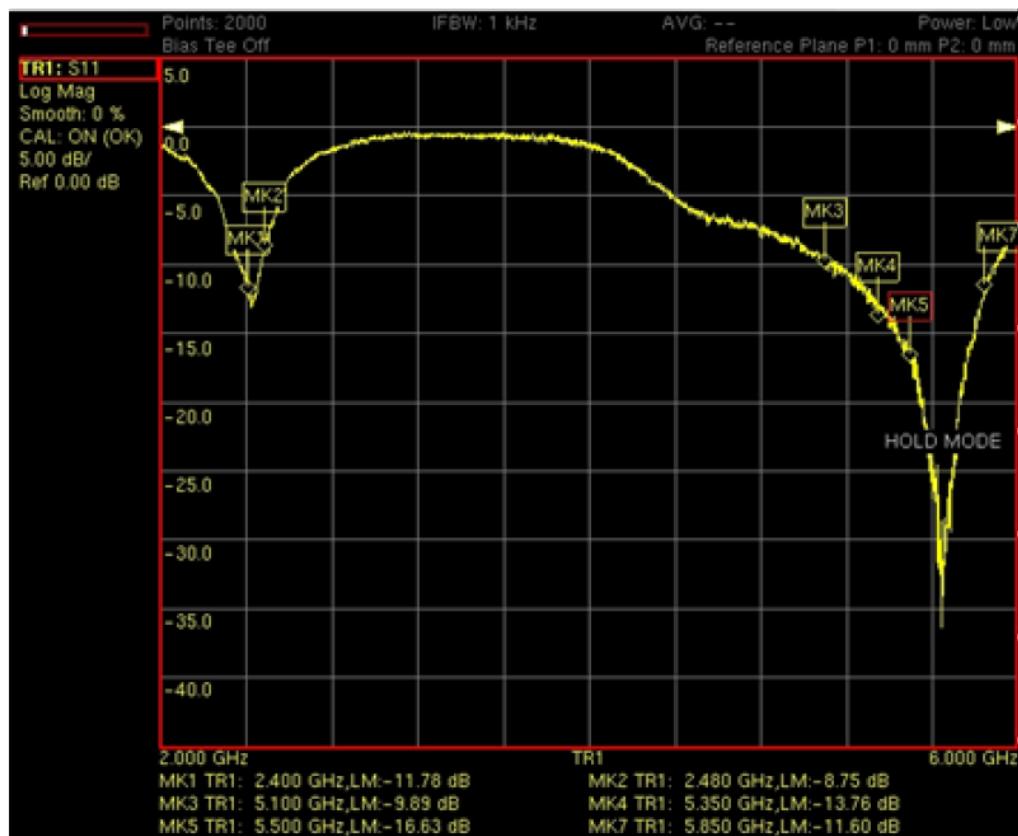
1.2 Antenna Dimensions



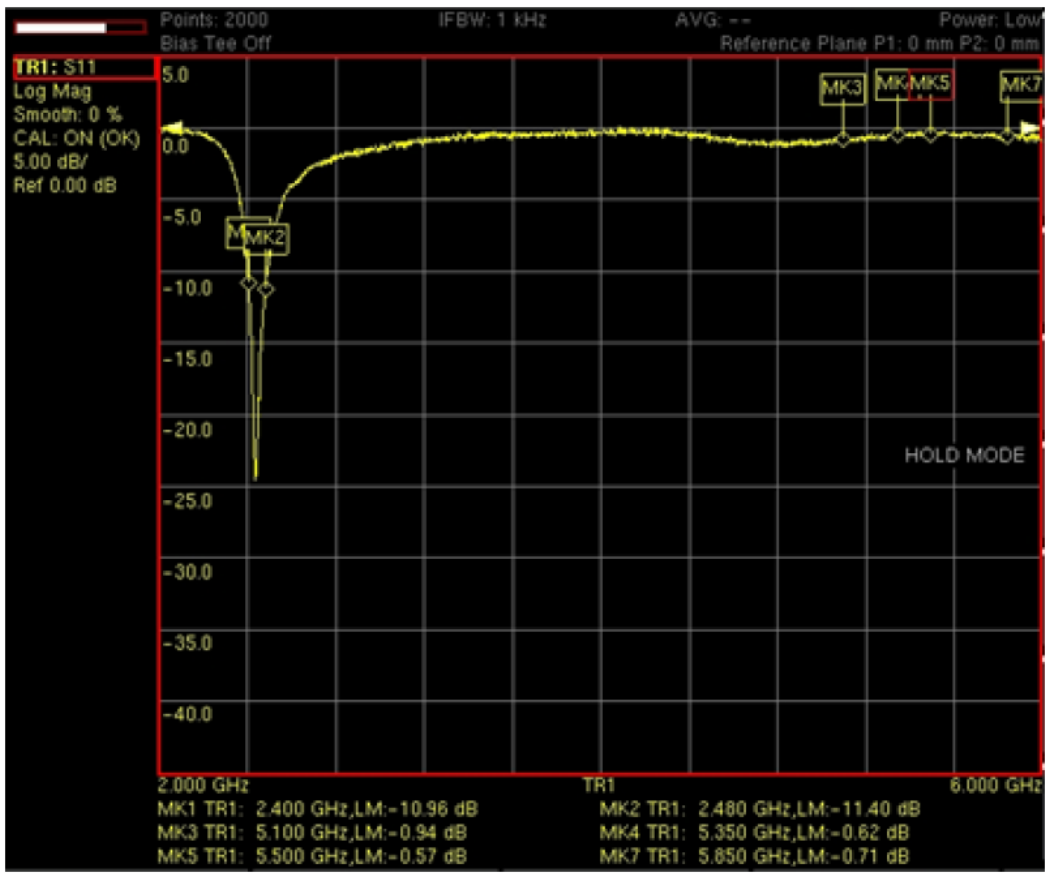
1.3 Antenna 0 Return Loss



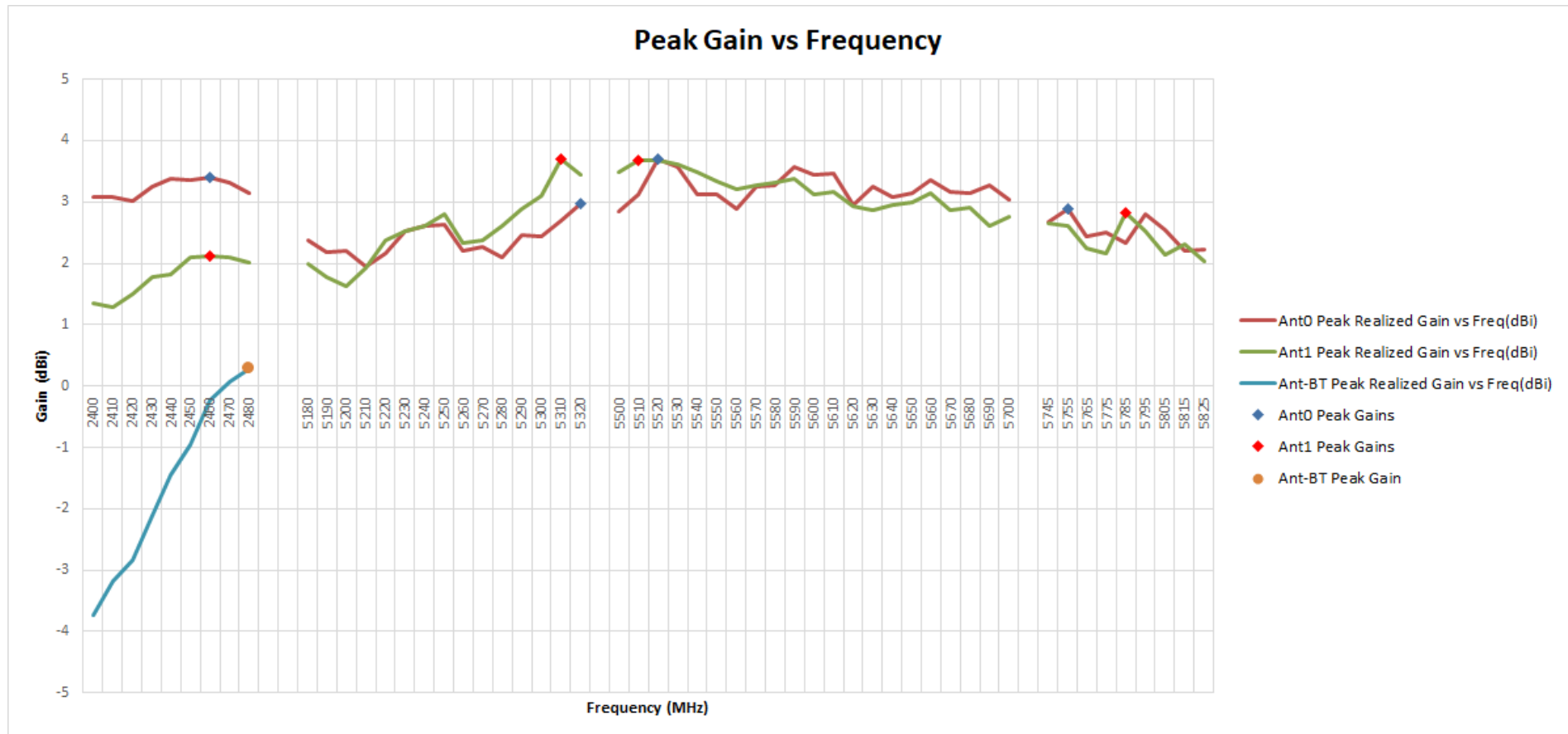
1.4 Antenna 1 Return Loss



1.5 Antenna BT Return Loss



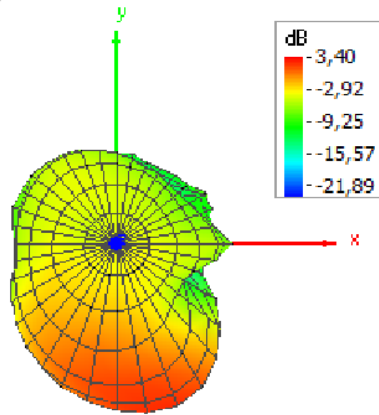
2 Antenna Gain Vs Frequency Characteristics



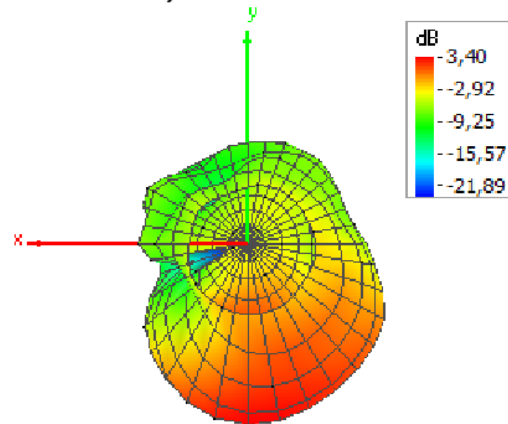
3 Antenna 0 Radiation Patterns @ Peak Gain

3.1 2460 MHz

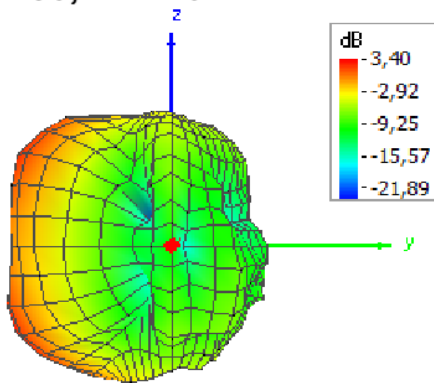
Theta = 0, Phi = 0



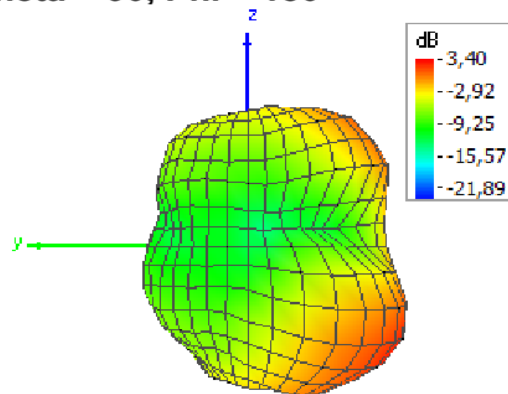
Theta = 180, Phi = 0



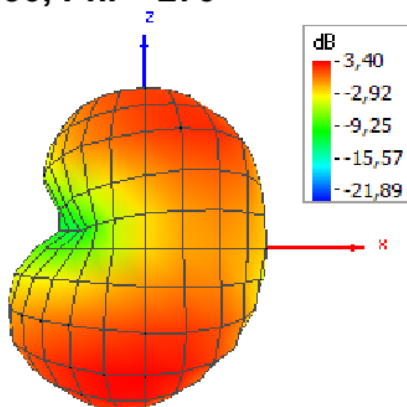
Theta = 90, Phi = 0



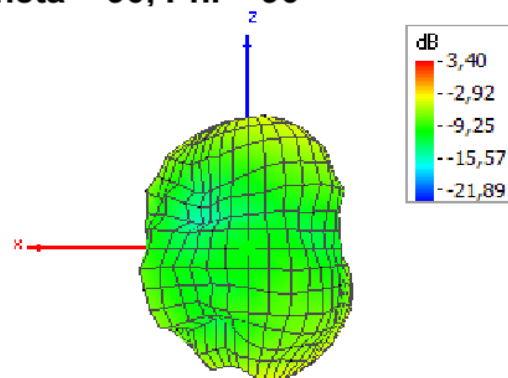
Theta = 90, Phi = 180



Theta = 90, Phi = 270

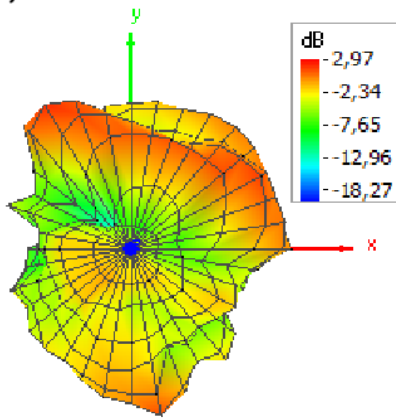


Theta = 90, Phi = 90

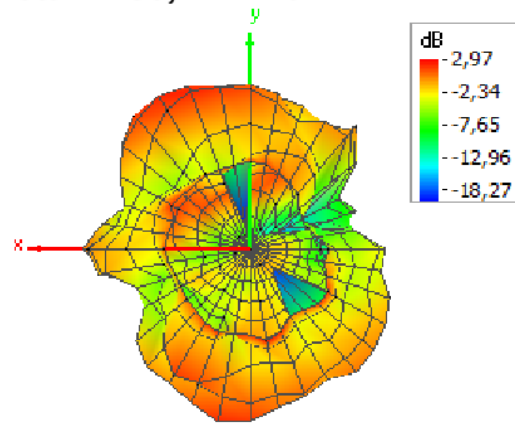


3.2 5320 MHz

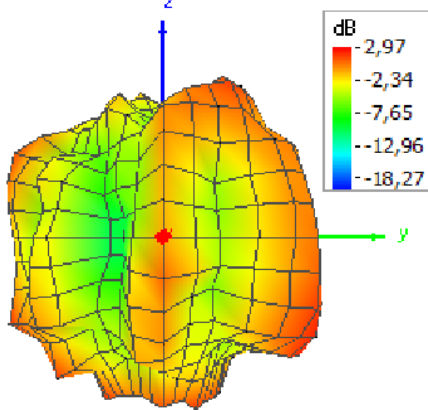
Theta = 0, Phi = 0



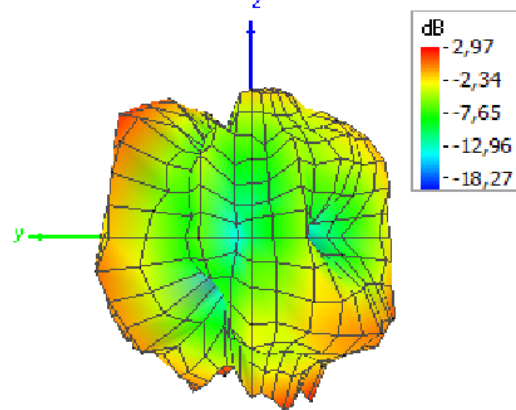
Theta = 180, Phi = 0



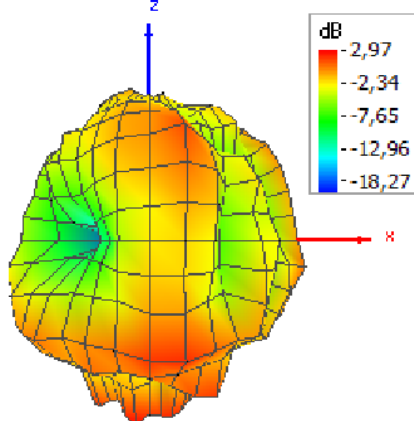
Theta = 90, Phi = 0



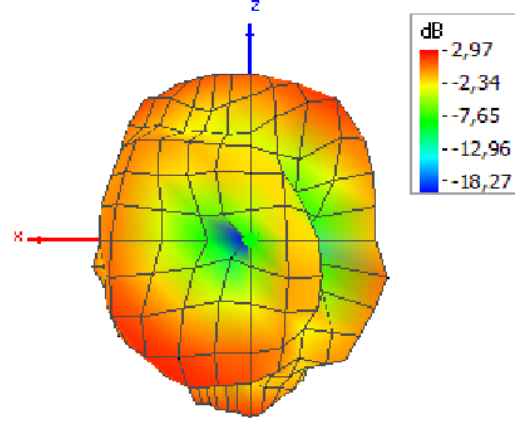
Theta = 90, Phi = 180



Theta = 90, Phi = 270

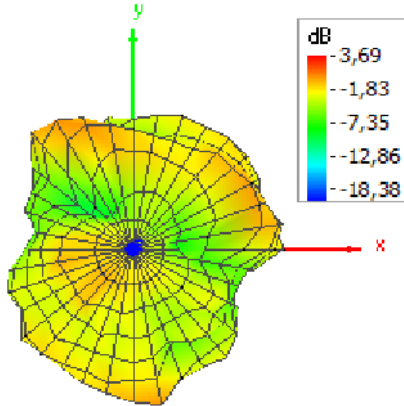


Theta = 90, Phi = 90

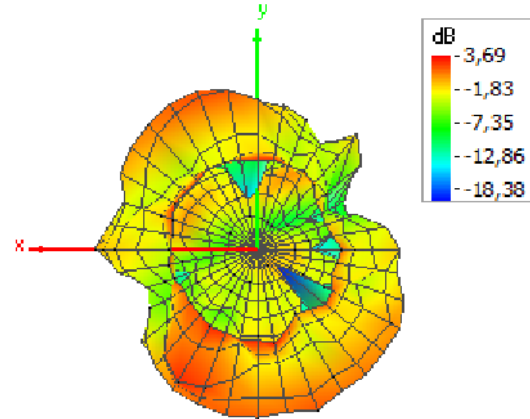


3.3 5520 MHz

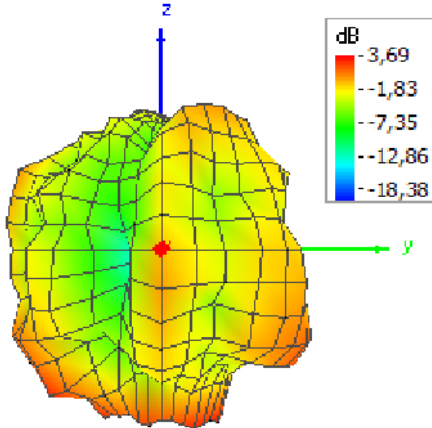
Theta = 0, Phi = 0



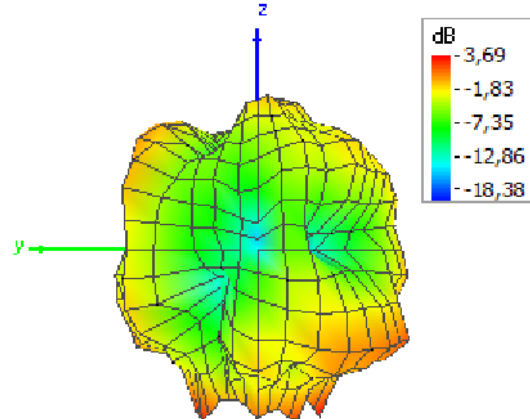
Theta = 180, Phi = 0



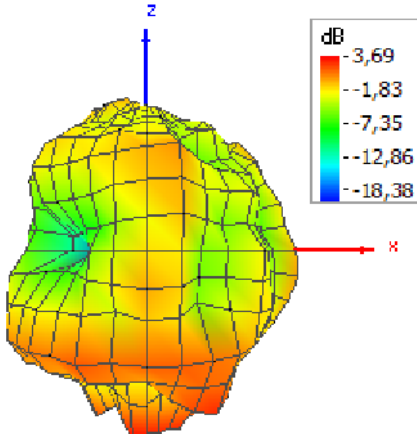
Theta = 90, Phi = 0



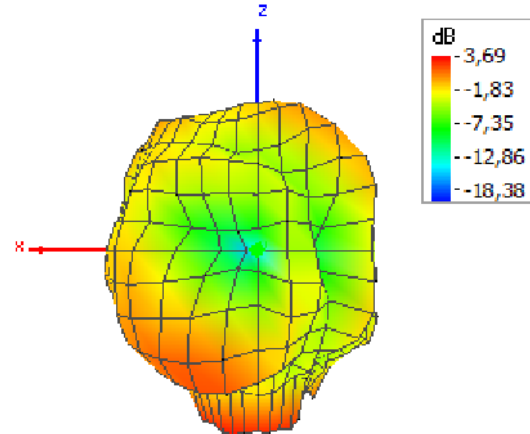
Theta = 90, Phi = 180



Theta = 90, Phi = 270

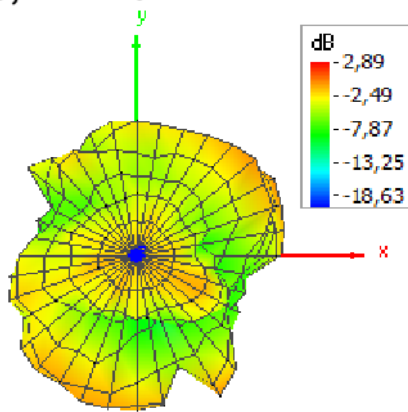


Theta = 90, Phi = 90

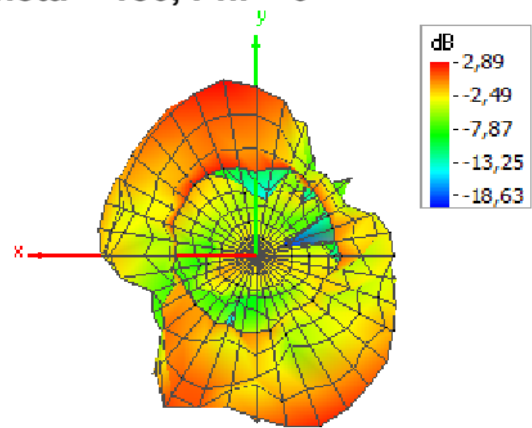


3.4 5755 MHz

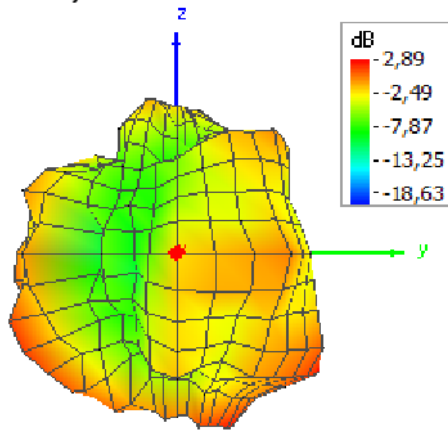
Theta = 0, Phi = 0



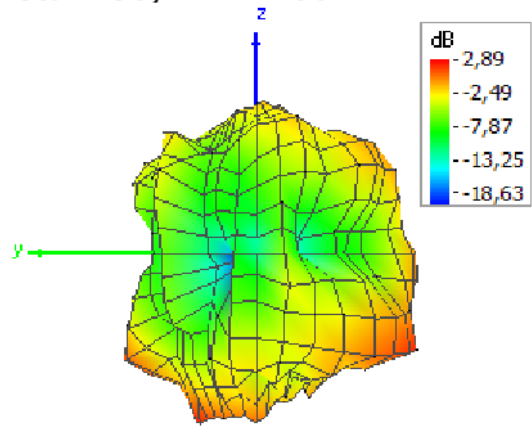
Theta = 180, Phi = 0



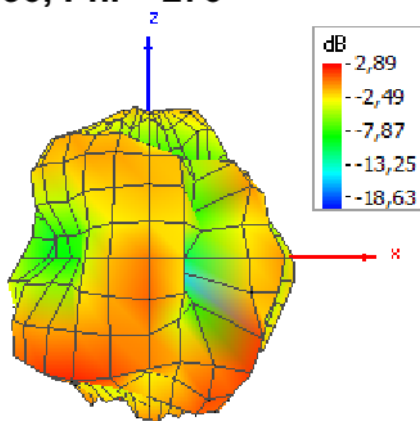
Theta = 90, Phi = 0



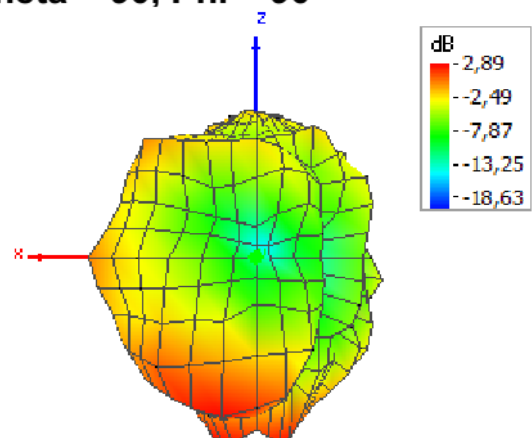
Theta = 90, Phi = 180



Theta = 90, Phi = 270



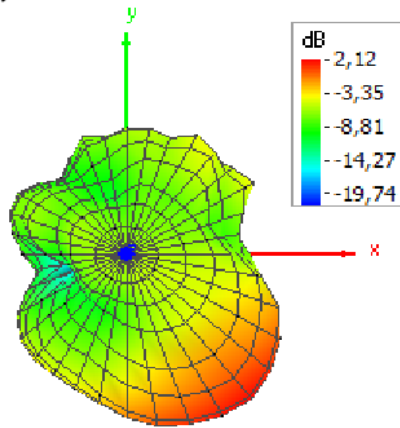
Theta = 90, Phi = 90



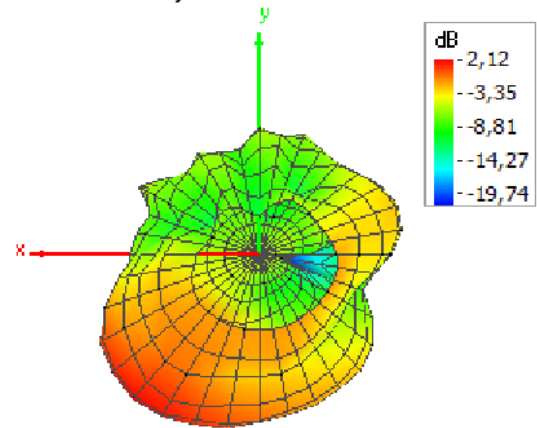
4 Antenna 1 Radiation Patterns @ Peak Gain

4.1 2460 MHz

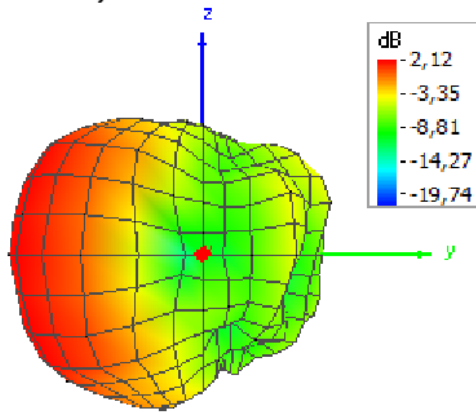
Theta = 0, Phi = 0



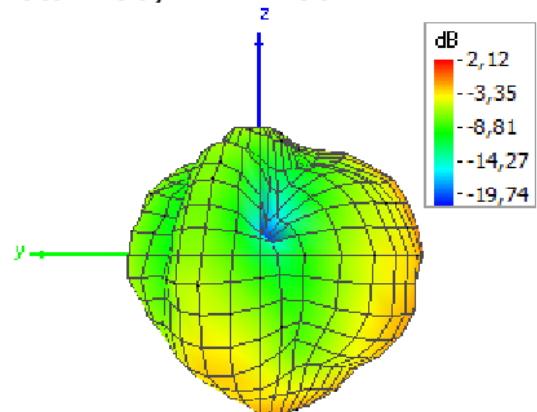
Theta = 180, Phi = 0



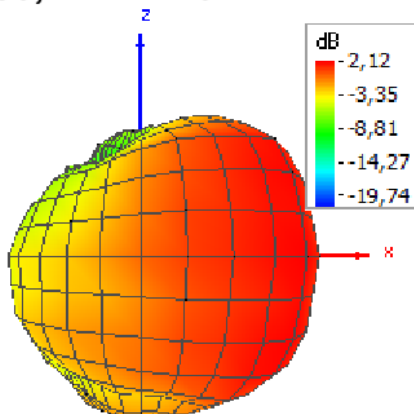
Theta = 90, Phi = 0



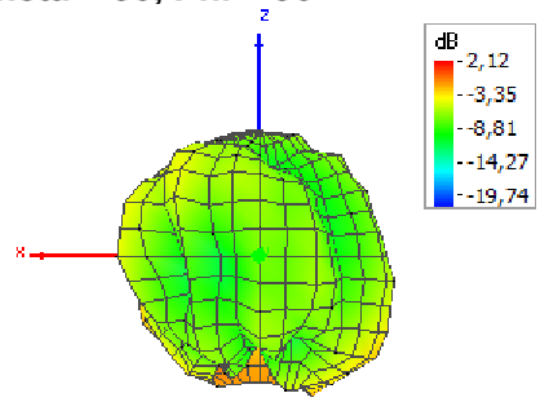
Theta = 90, Phi = 180



Theta = 90, Phi = 270

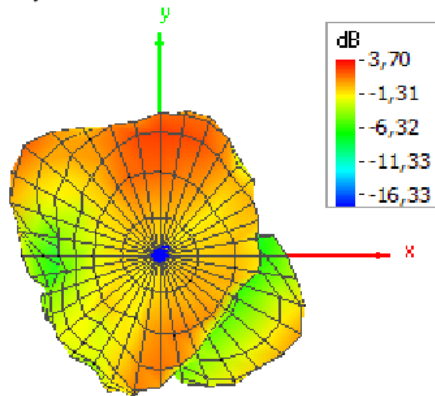


Theta = 90, Phi = 90

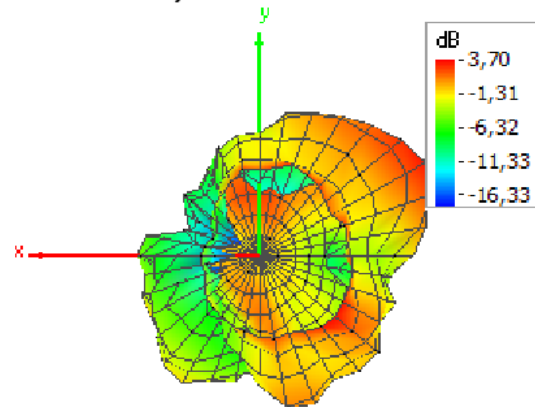


4.2 5310 MHz

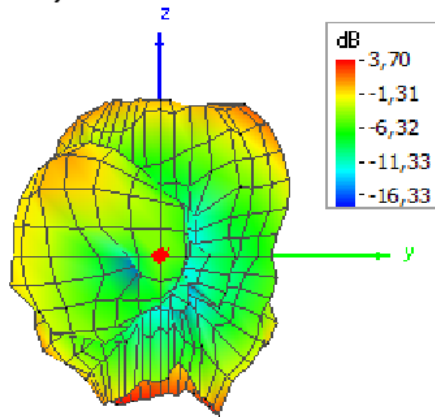
Theta = 0, Phi = 0



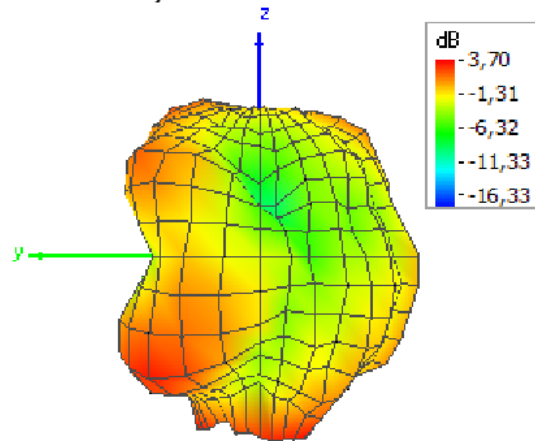
Theta = 180, Phi = 0



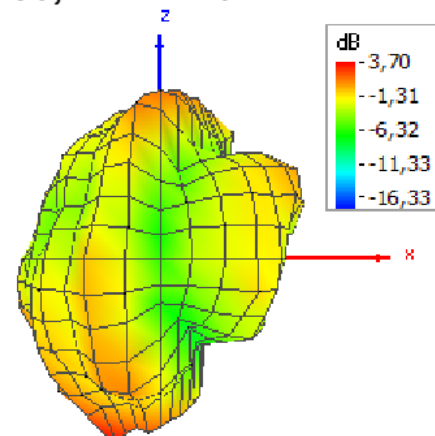
Theta = 90, Phi = 0



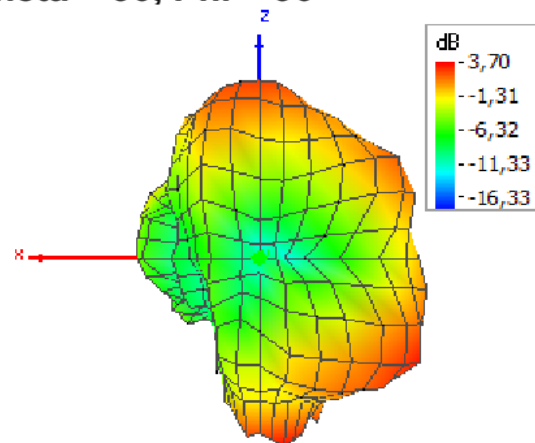
Theta = 90, Phi = 180



Theta = 90, Phi = 270

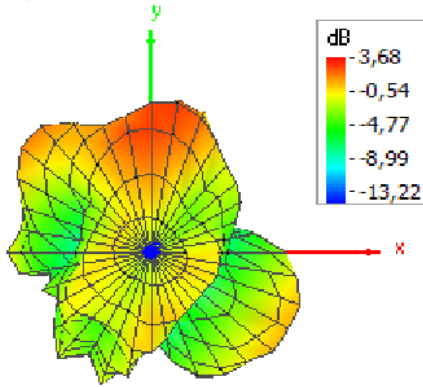


Theta = 90, Phi = 90

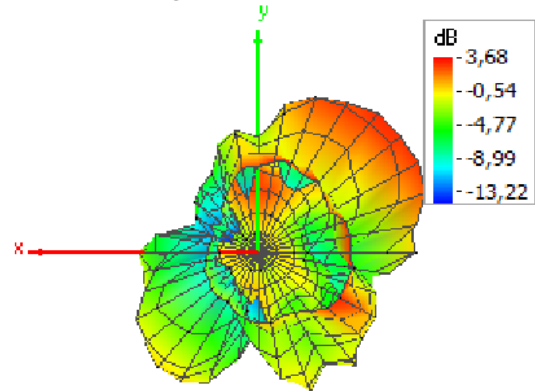


4.3 5510 MHz

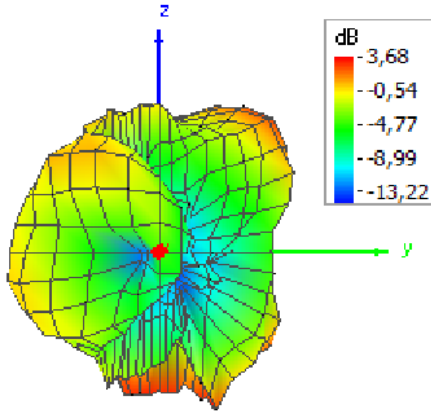
Theta = 0, Phi = 0



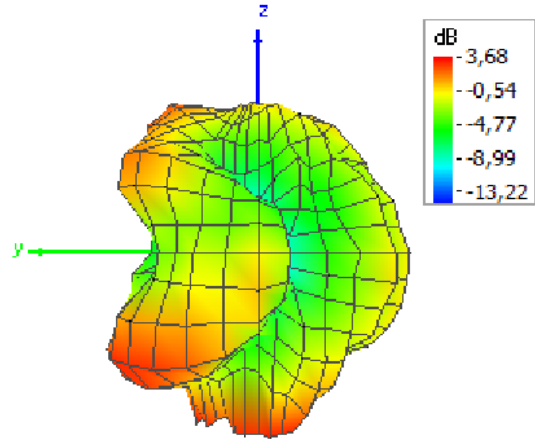
Theta = 180, Phi = 0



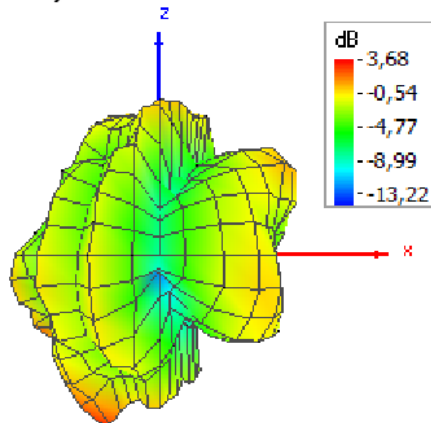
Theta = 90, Phi = 0



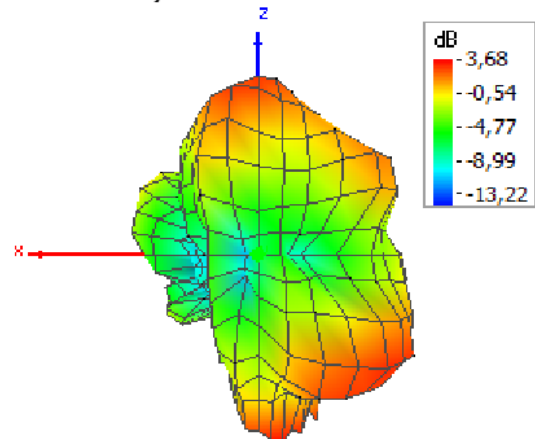
Theta = 90, Phi = 180



Theta = 90, Phi = 270

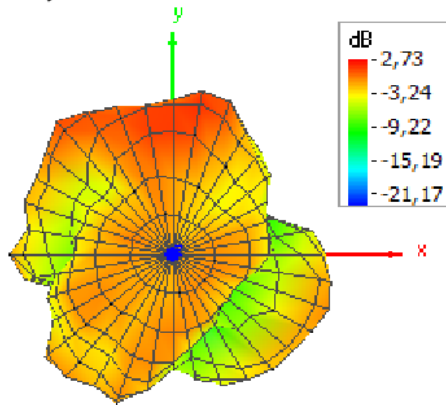


Theta = 90, Phi = 90

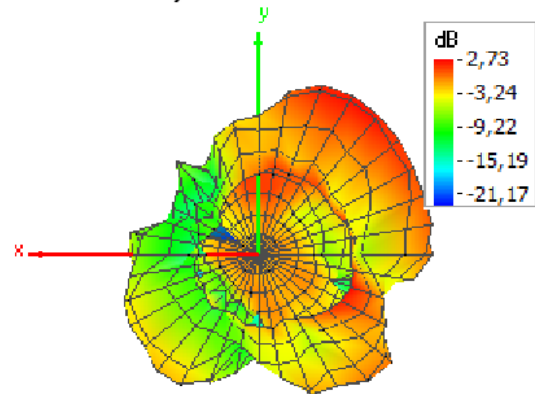


4.4 5785 MHz

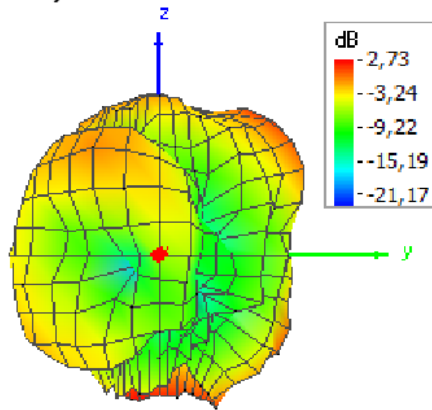
Theta = 0, Phi = 0



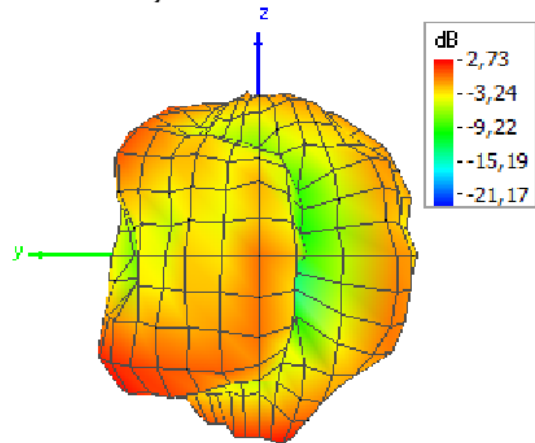
Theta = 180, Phi = 0



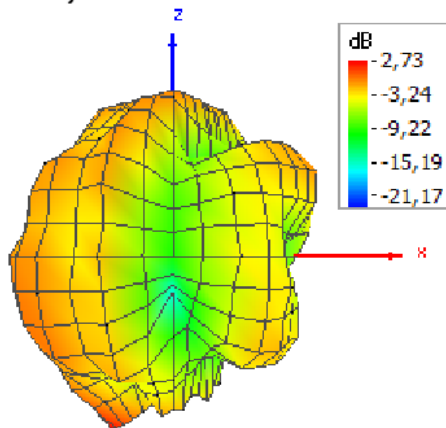
Theta = 90, Phi = 0



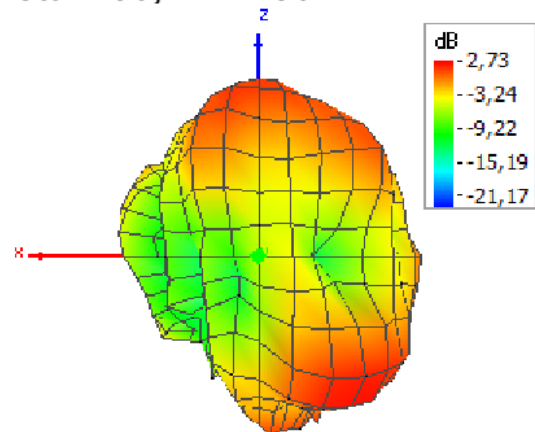
Theta = 90, Phi = 180



Theta = 90, Phi = 270

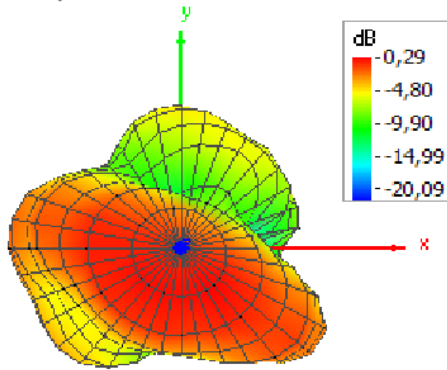


Theta = 90, Phi = 90

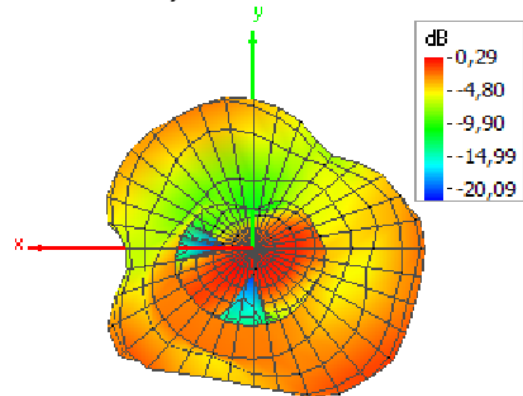


5 Antenna BT Radiation Pattern @ Peak Gain

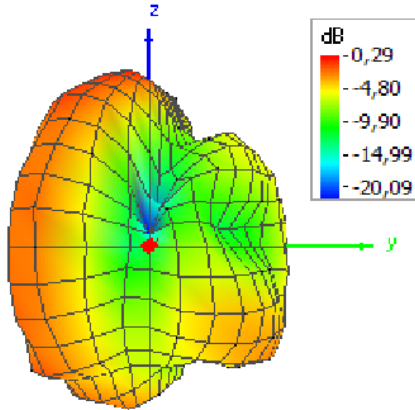
Theta = 0, Phi = 0



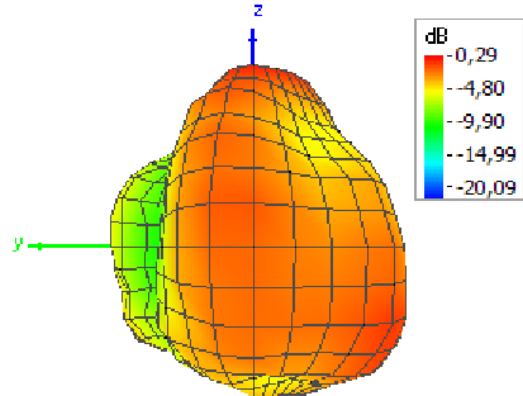
Theta = 180, Phi = 0



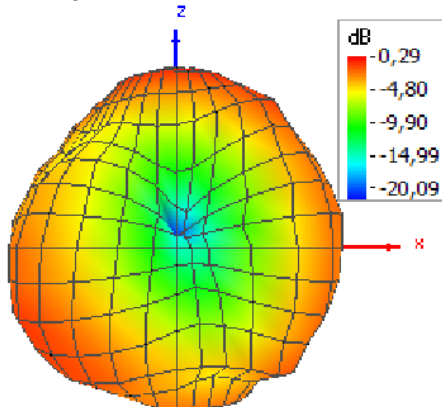
Theta = 90, Phi = 0



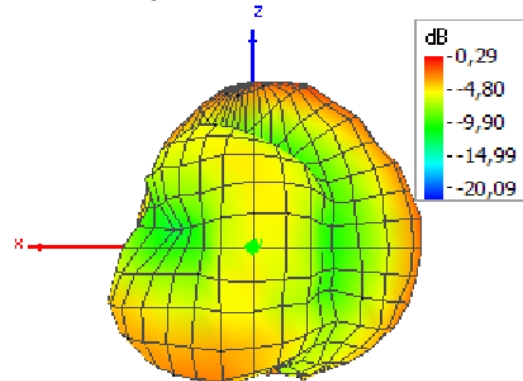
Theta = 90, Phi = 180



Theta = 90, Phi = 270



Theta = 90, Phi = 90



6 Test Site Information

- Albatross full anechoic chamber (5x5 m)
- Howland QR-4 Horn antenna
- R&S ZNB 20 VNA

- R&S AMS32 measurement software
- Maturo Controller

