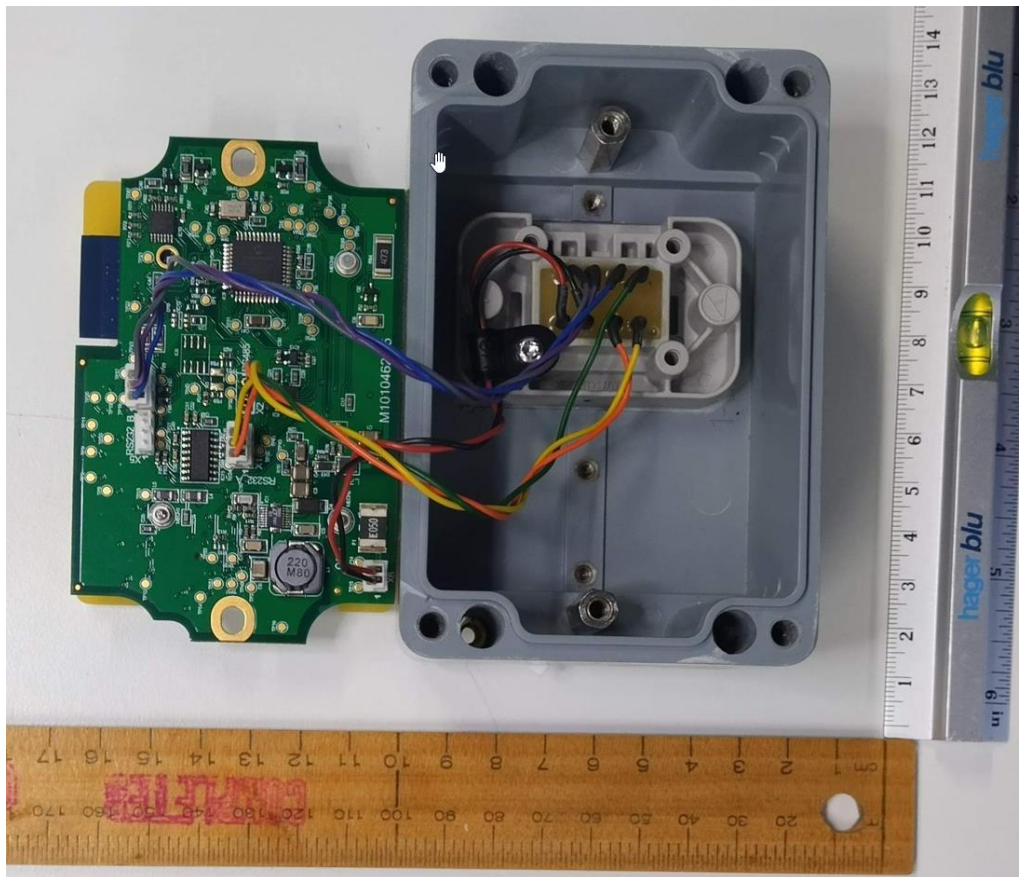


EUT Internal Photographs

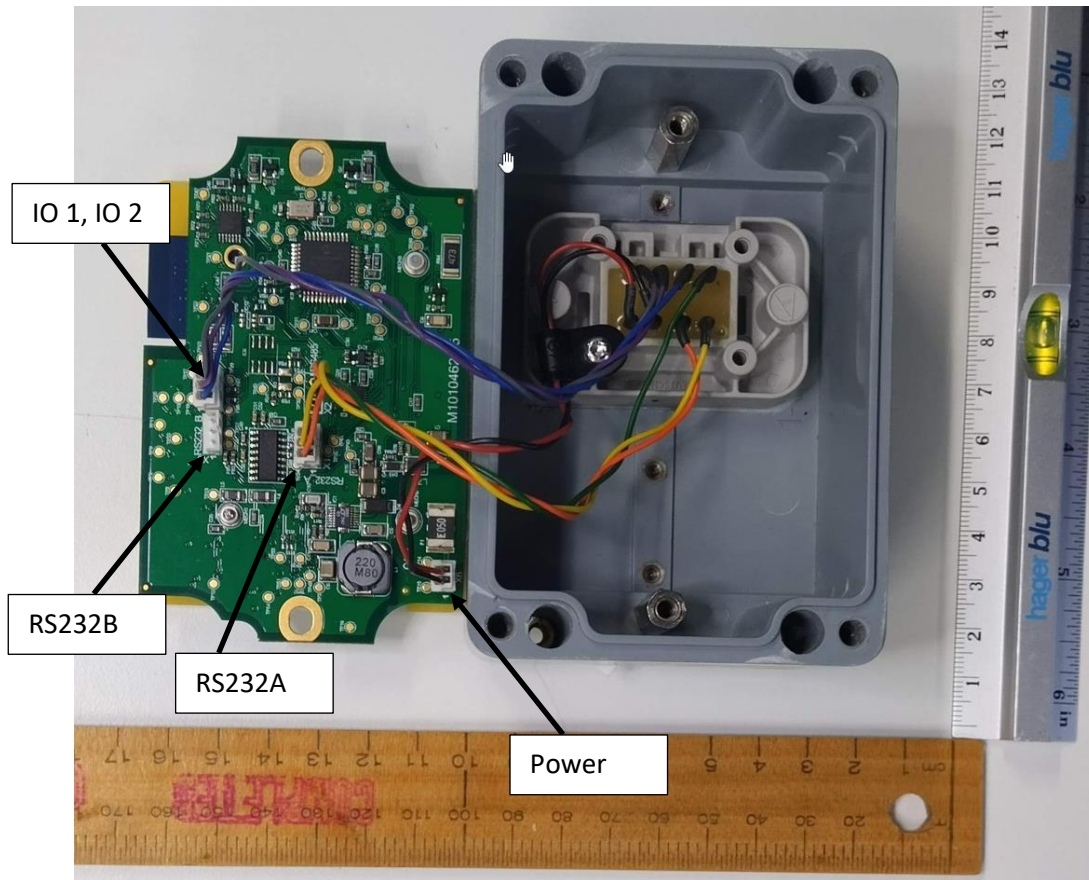
1.1 EUT – Lid Open View



1.2 EUT – Internal Bottom View Connections

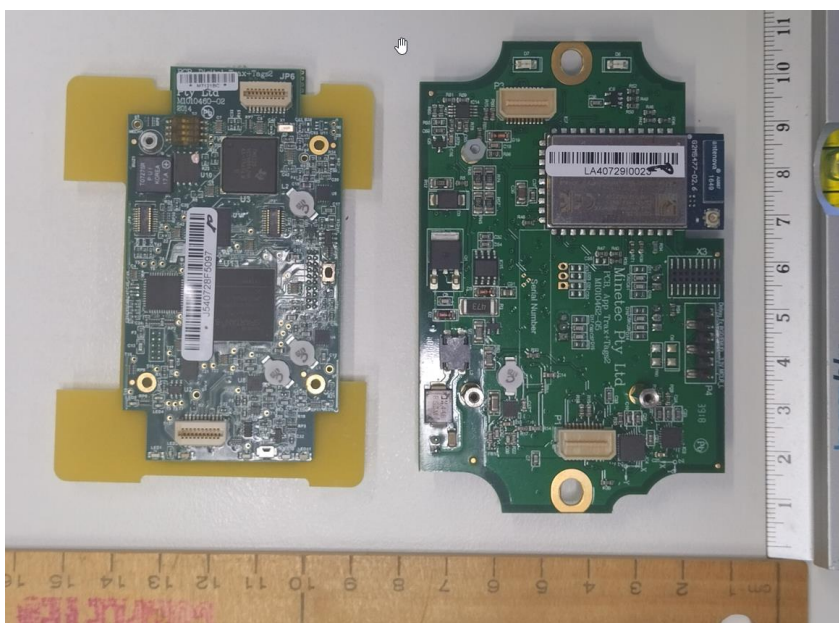


1.3 EUT – Internal Wiring

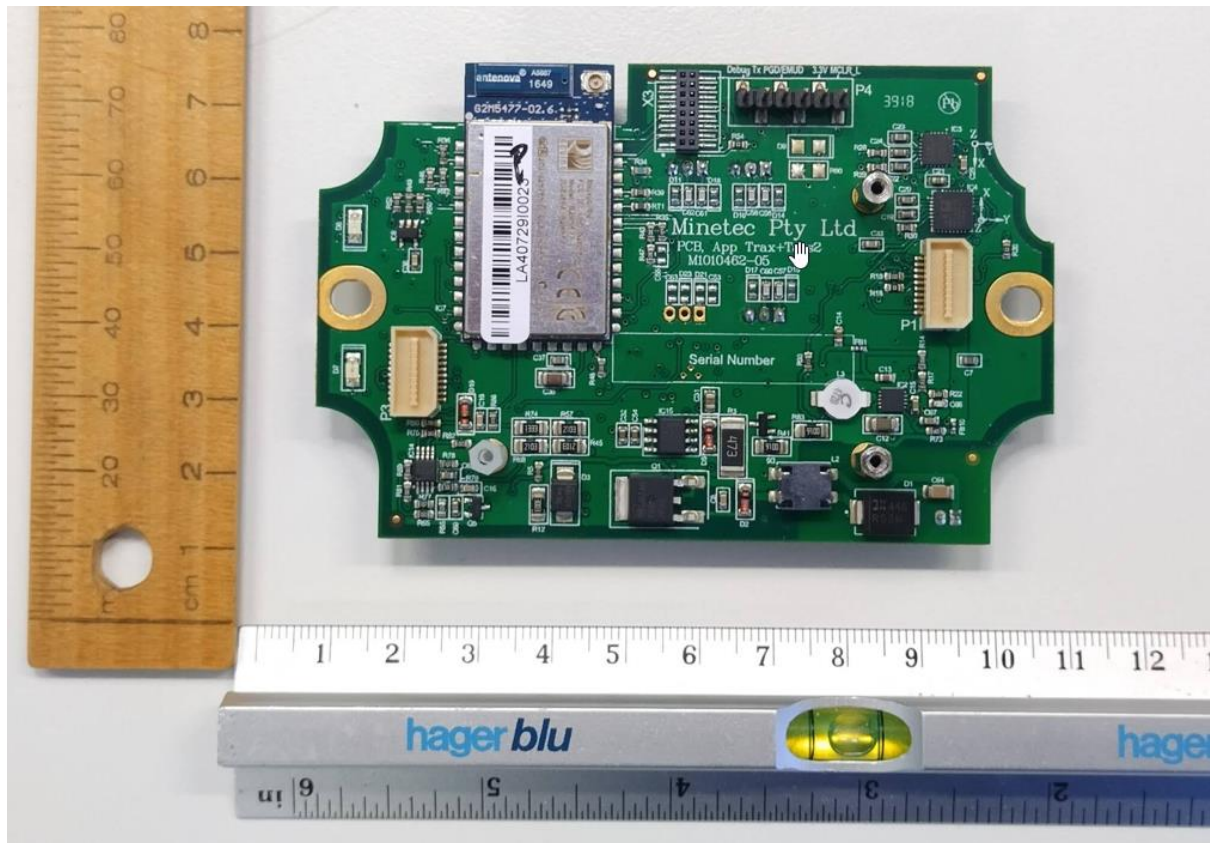


Note the difference between a Mobile Node and Mobile Node (R) is the Orange-Yellow-Green cable goes to “RS232A” below for a Mobil Node (R) and on a Mobile Node it goes to “RS232B” which is empty.

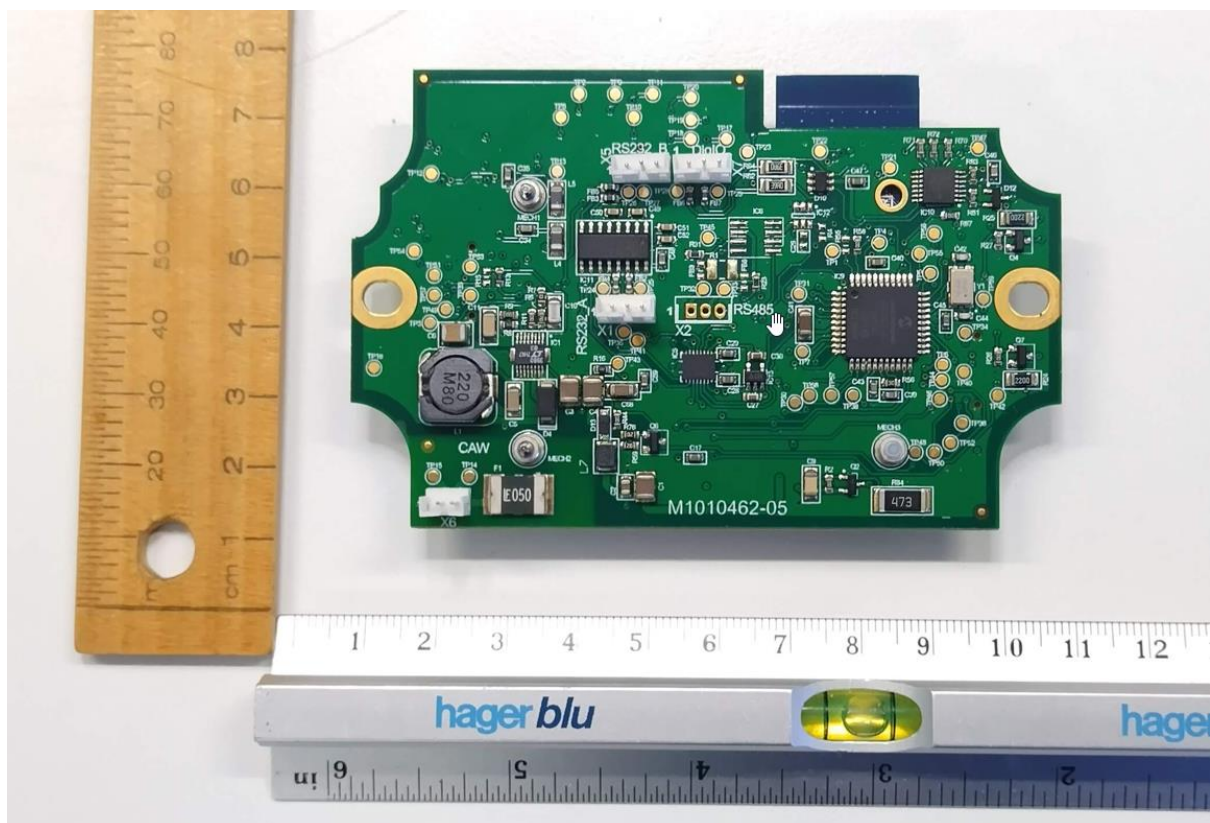
1.4 EUT – Daughter and Main Board



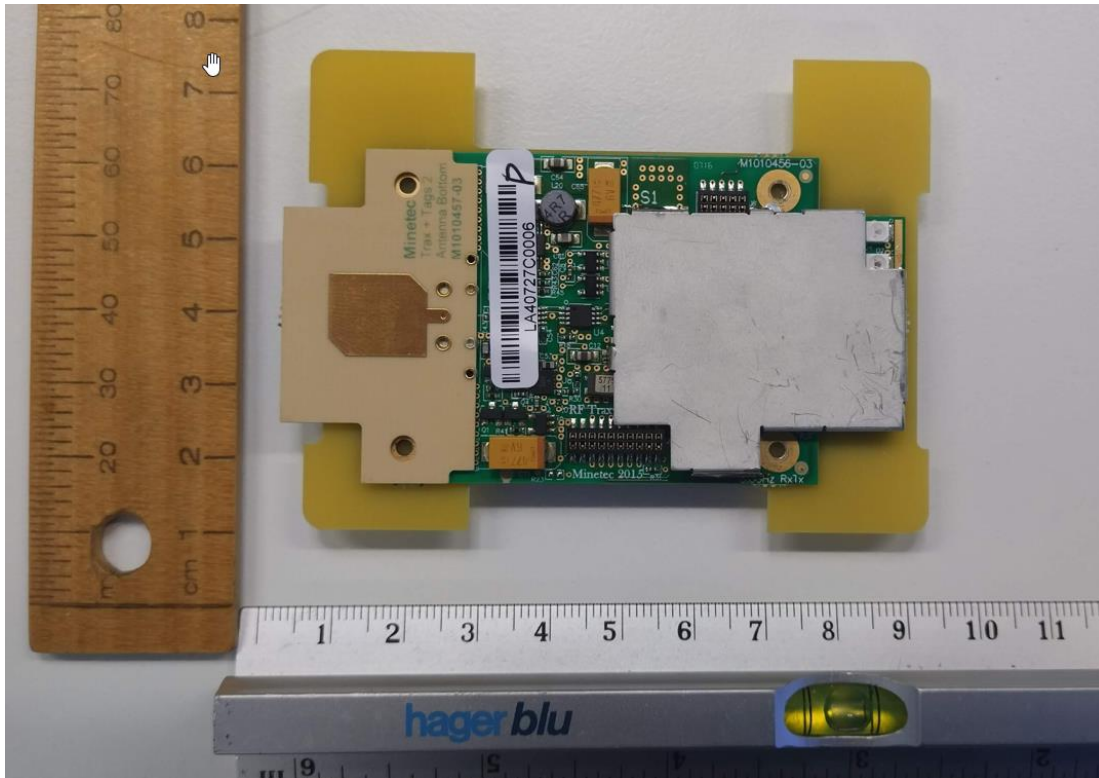
1.5 EUT – Main Board Top View



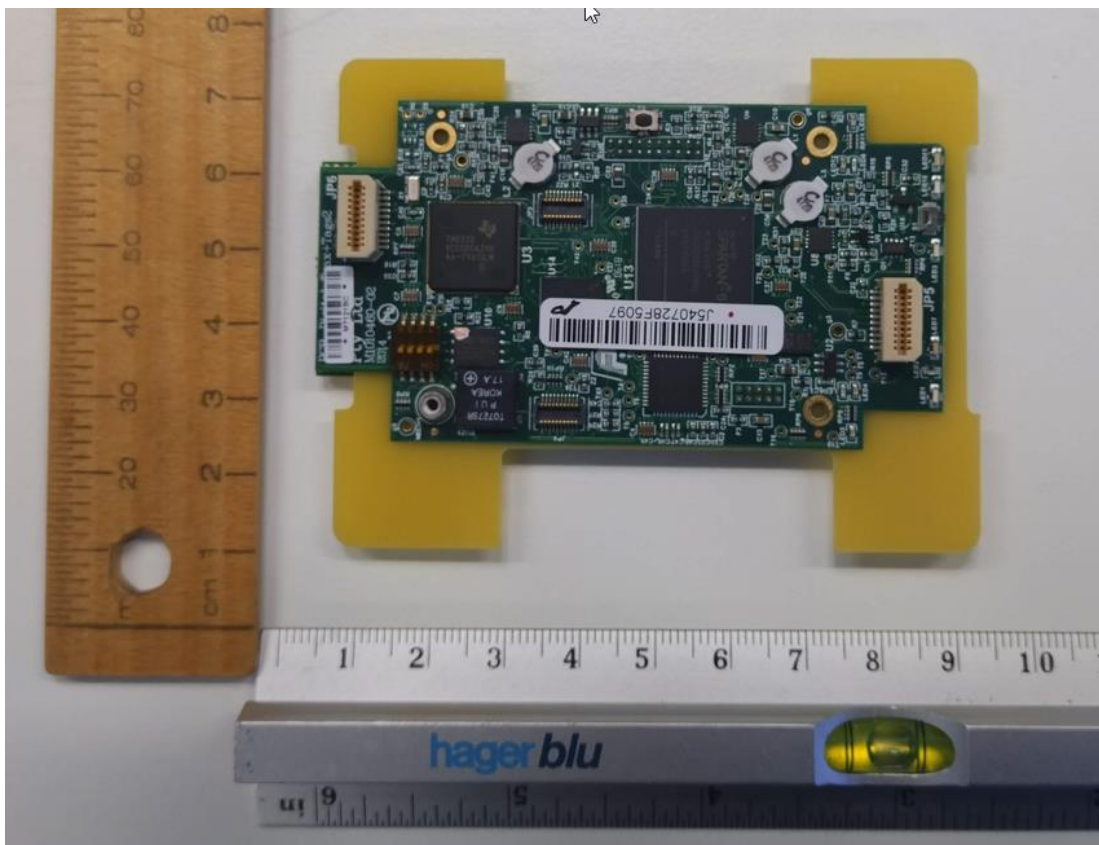
1.6 EUT – Main Board Bottom View



1.7 EUT – Daughter Board Top View



1.8 EUT – Daughter Board Bottom View



1.9 EUT – Daughter Top View – Metal Can Removed

